



GRAND BANKS 42 CLASSIC



GRAND BANKS 42 CLASSIC

BROKER'S COMMENTS

All time Classic from the famous Grand Banks yard, the 42 Classic model is the ultimate cruiser trawler. Many times copied, non have succeeded. Easy access on deck, good accommodations, twin helm positions and storage space to boot. With a new antifouling this ship will guarantee you years of pleasure.

Willem Koopmans

SPECIFICATIONS

Dimensions	12.75 x 4.14 x 1.27 (m)	Builder	American Marine Ltd.
Built	1980	Cabins	2
Material	GRP	Berths	4
Engine(s)	2 x Volvo Penta TAMD60 diesel	Hp/Kw	2 x 230.00 (hp), 169.05 (kw)
Asking price	sold (VAT)	Lying	contact sales office

CONTACT

Sales office	De Valk Costa Blanca	Telephone	+34 96 50 21 569
Address	Costa Blanca Region 03730 Javea Alicante ES	E-mail	costablanca@devalk.nl

DISCLAIMER

These particulars are given in good faith as supplied but cannot be guaranteed.



GRAND BANKS 42 CLASSIC

GENERAL

Model	GRAND BANKS 42 CLASSIC
Type	motor yacht
LOA (m)	12,75
Beam (m)	4,14
Draft (m)	1,27
Air draft (m)	3,50
Headroom (m)	2,20
Year built	1980
Builder	American Marine Ltd.
Country	Singapore
Designer	Ken Smith
Displacement (t)	15,5
CE norm	NA
Hull material	GRP
Hull colour	white
Hull shape	deep-V
Superstructure material	GRP
Rubbing strake	aluminum
Deck material	GRP
Deck finish	teak
Superstructure deck finish	teak
Antifouling (year)	2016
Window frame	aluminium
Window material	tempered glass
Flybridge	yes
Flybridge cover	yes
Flybridge cockpit cover	yes
Flybridge suncover	yes
Radar arch	collapsible
Steadying sail with mast	yes



GRAND BANKS 42 CLASSIC

Fuel tank (litre)	aluminium 1230
Fuel tank 2 (litre)	aluminium 1230
Level indicator (fuel tank)	yes
Freshwater tank (litre)	aluminium 3x400
Blackwater tank (litre)	GRP 100
Blackwater tank extraction	deck extraction + pump
Wheel steering	cable steering
Inside helm position	yes
Flybridge helm position	cable steering

ACCOMMODATION

Cabins	2
Berths	4
Interior	teak
Layout	yes
Floor	parquet
Aft deck	yes
Deck saloon	yes
Saloon	yes
Headroom saloon (m)	2,10
Heating	central heating Webasto HL 90. Kw /9 full/6.5 low
Galley	yes
Countertop	plastic
Sink	stainless steel
Cooker	calor gas
Oven	yes
Extractor	yes
Microwave	yes
Fridge	2x
Hot water system	220V
Water pressure system	electrical



GRAND BANKS 42 CLASSIC

Owners cabin	double bed
Bed length (m)	1,80x2,00
Wardrobe	walk-in closet
Bathroom	yes
Toilet	yes
Toilet system	electric
Wash basin	in the bathroom
Shower	
Guest cabin 1	single bed 2x
Bed length (m)	2
Wardrobe	hanging and drawers
Bathroom	yes
Toilet	yes
Toilet system	manual
Wash basin	in the bathroom
Shower	yes

MACHINERY

No of engines	2
Make	Volvo Penta
Type	TAMD60
HP	230
kW	169,05
Fuel	diesel
Year installed	1980
Maximum speed (kn)	17
Engine hours	3125
Engine cooling system	seawater
Engine controls	mechanical
Gearbox	hydraulic
Gearbox	hydraulic



GRAND BANKS 42 CLASSIC

Exhaust	watercooled
Propeller type	fixed
Propeller shaft material	stainless steel
Manual bilge pump	yes
Electric bilge pump	yes
Batteries	4
Start battery	2
Battery charger	Mastervolt charge Master 12/70-3
Shorepower	with cable
Insulation transformer	yes

NAVIGATION

Compass	yes
Electric compass	yes
Depth sounder	Seafare 501
Log	Furuno
VHF	Navigon
VHF handheld	Sailor
Autopilot	Neco
Radar	Furuno 1731
GPS	Furuno 1731
Plotter	yes
Navtex	Furuno
Electronic chart(s)	Language Spanisch- Iberisch area
Radio receiver	yes
Transmitter	yes
Searchlight	yes

EQUIPMENT

Sun awning	yes
Bathing platform	yes

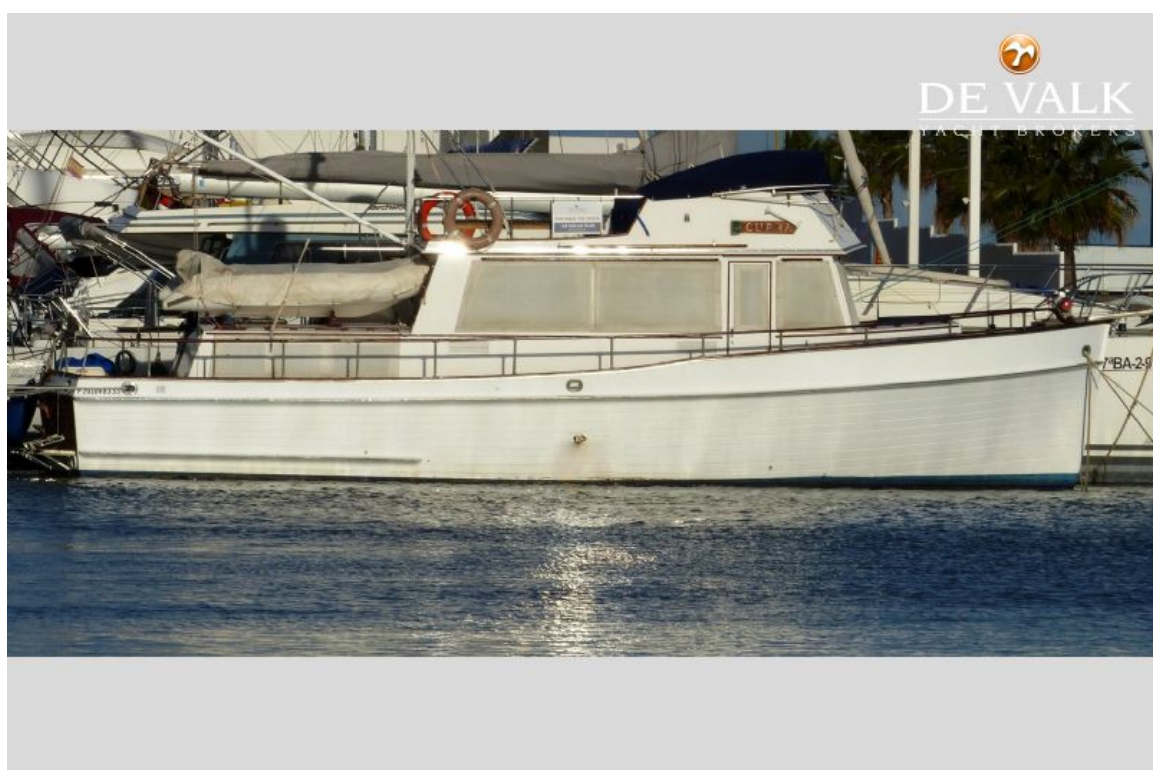


GRAND BANKS 42 CLASSIC

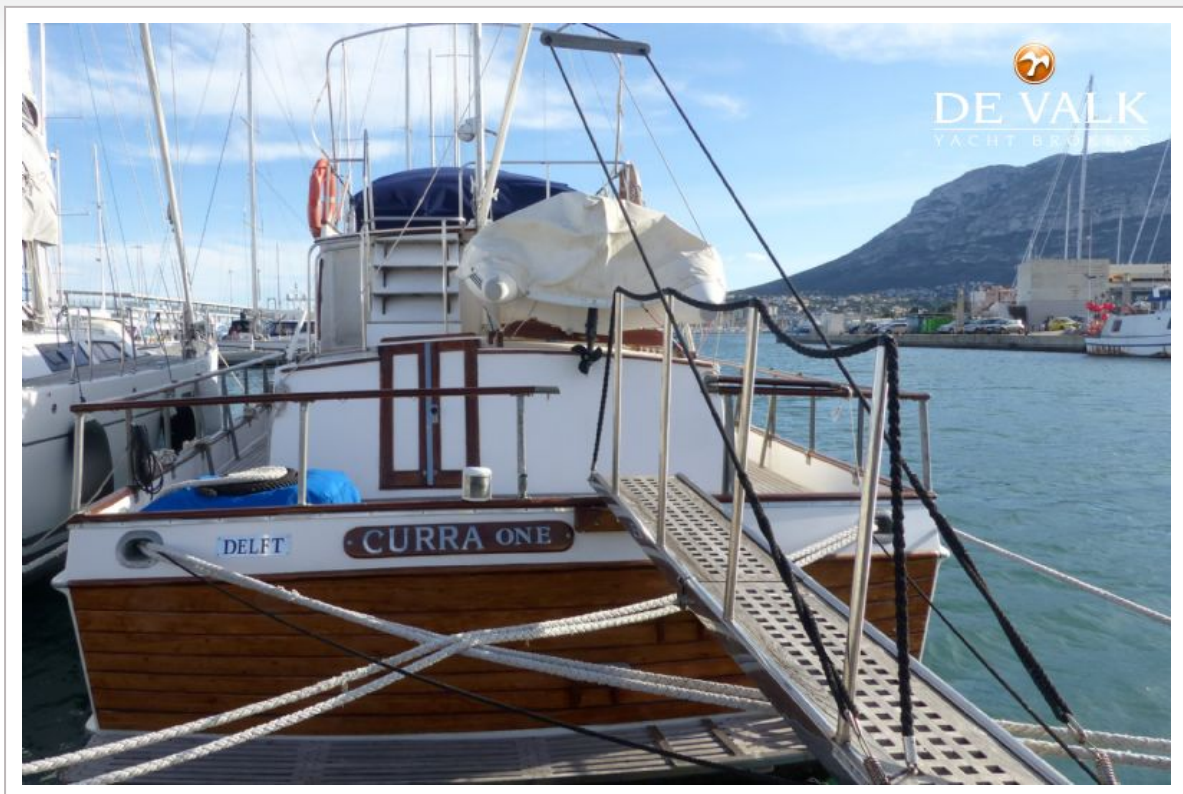
Boarding ladder	stainless steel
Bow ladder	yes
Gangway	Manual
Deck shower	yes
Anchor	yes
Anchor chain	50
Other ground tackle	yes
Windlass	electrical Vetus
Dinghy	Imin Asa Marine type MX-310/RIB
Outboard	Tohatsu 6pk
Deck crane	manual
Sea railing	yes
Railing side opening gates	yes
Satellite	yes
TracVision ball	yes
Clock - barometer	yes
Fire extinguisher	yes
Extinguisher in engine room	yes



GRAND BANKS 42 CLASSIC



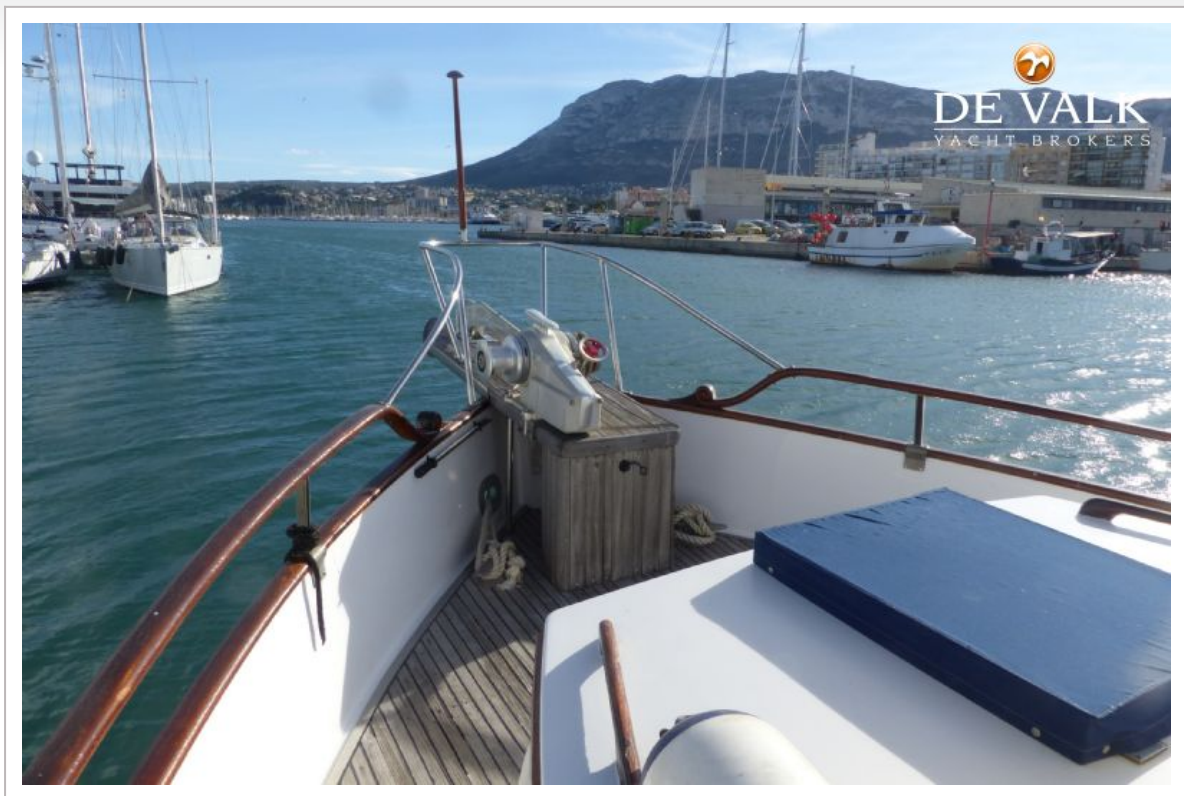
GRAND BANKS 42 CLASSIC



GRAND BANKS 42 CLASSIC



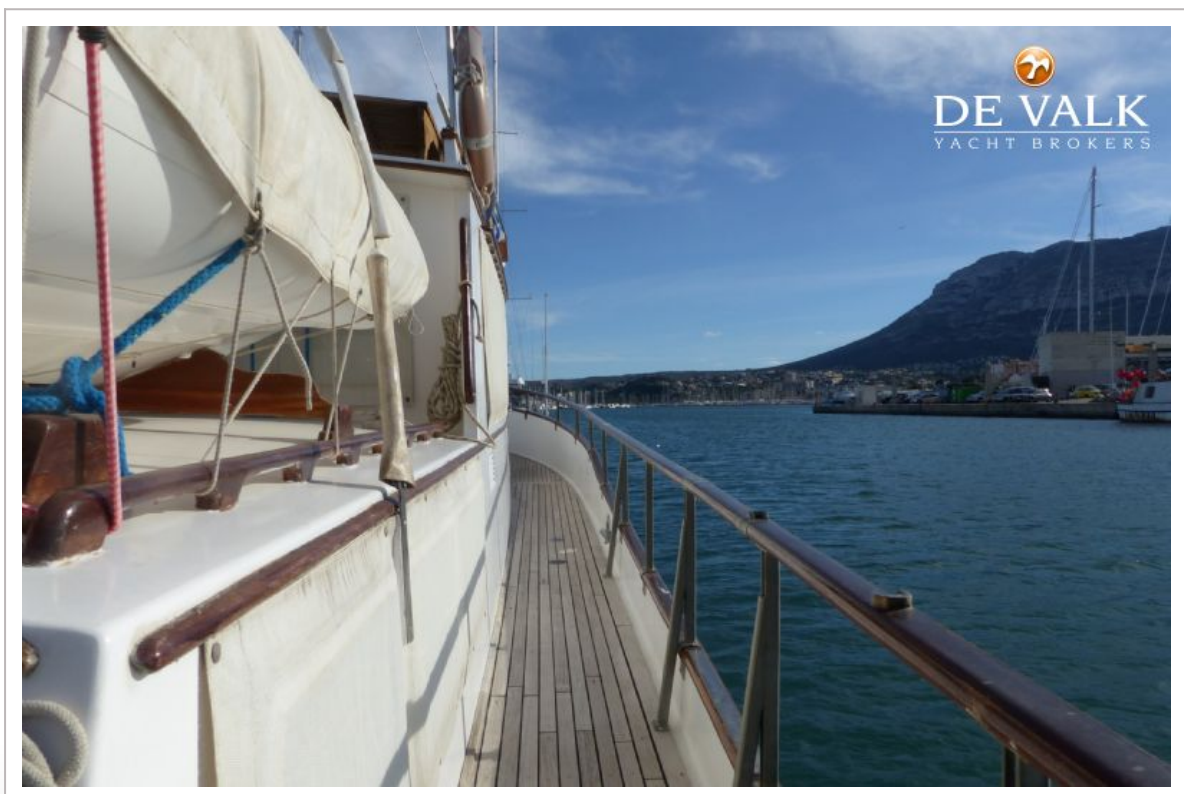
GRAND BANKS 42 CLASSIC



GRAND BANKS 42 CLASSIC



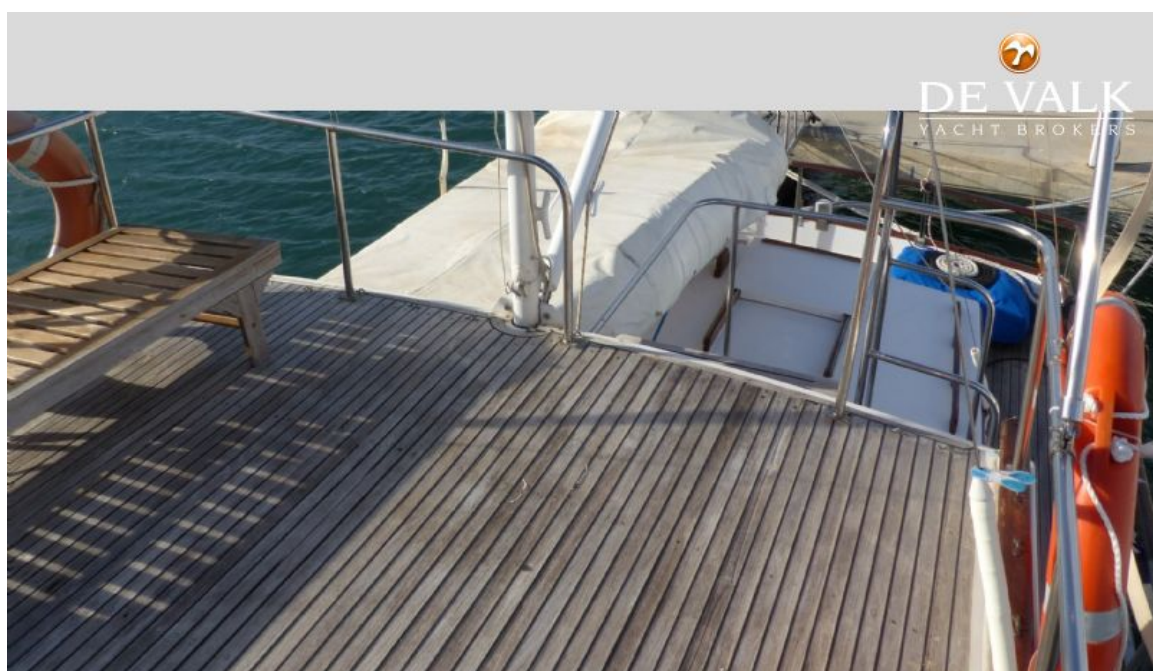
GRAND BANKS 42 CLASSIC



GRAND BANKS 42 CLASSIC



GRAND BANKS 42 CLASSIC



GRAND BANKS 42 CLASSIC



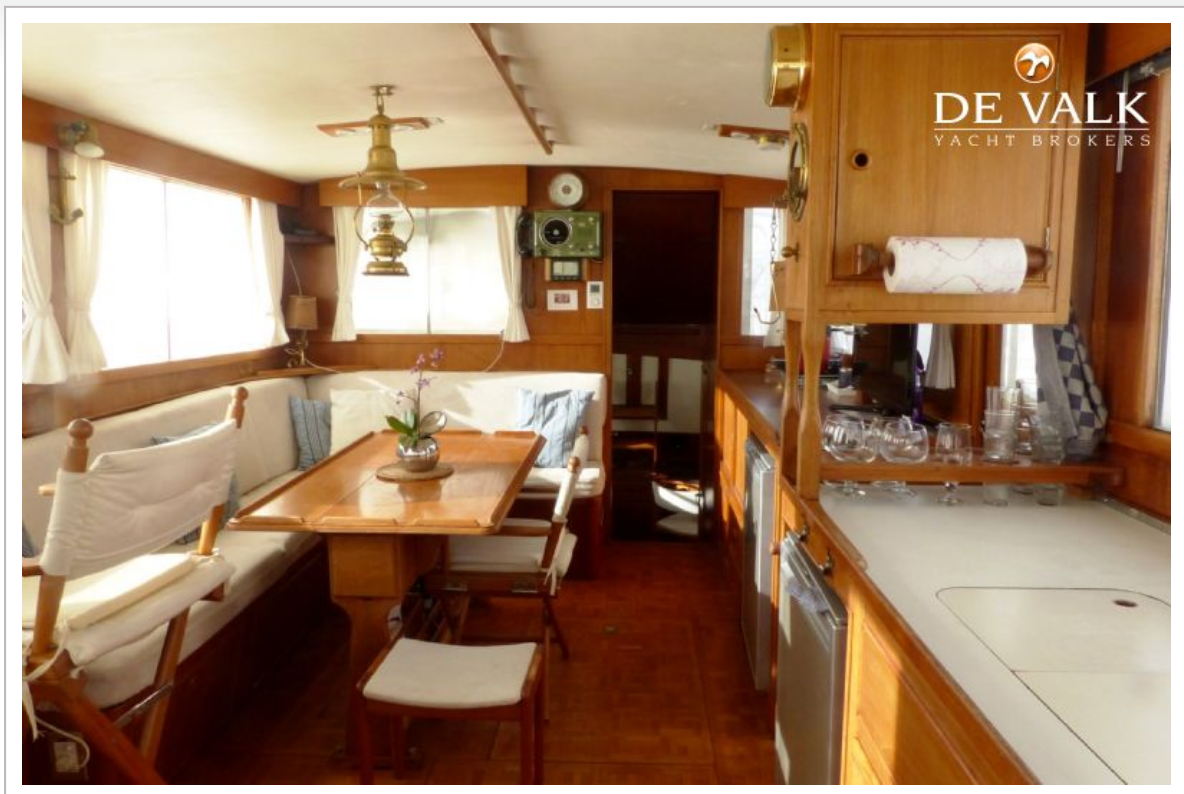
GRAND BANKS 42 CLASSIC



GRAND BANKS 42 CLASSIC



GRAND BANKS 42 CLASSIC



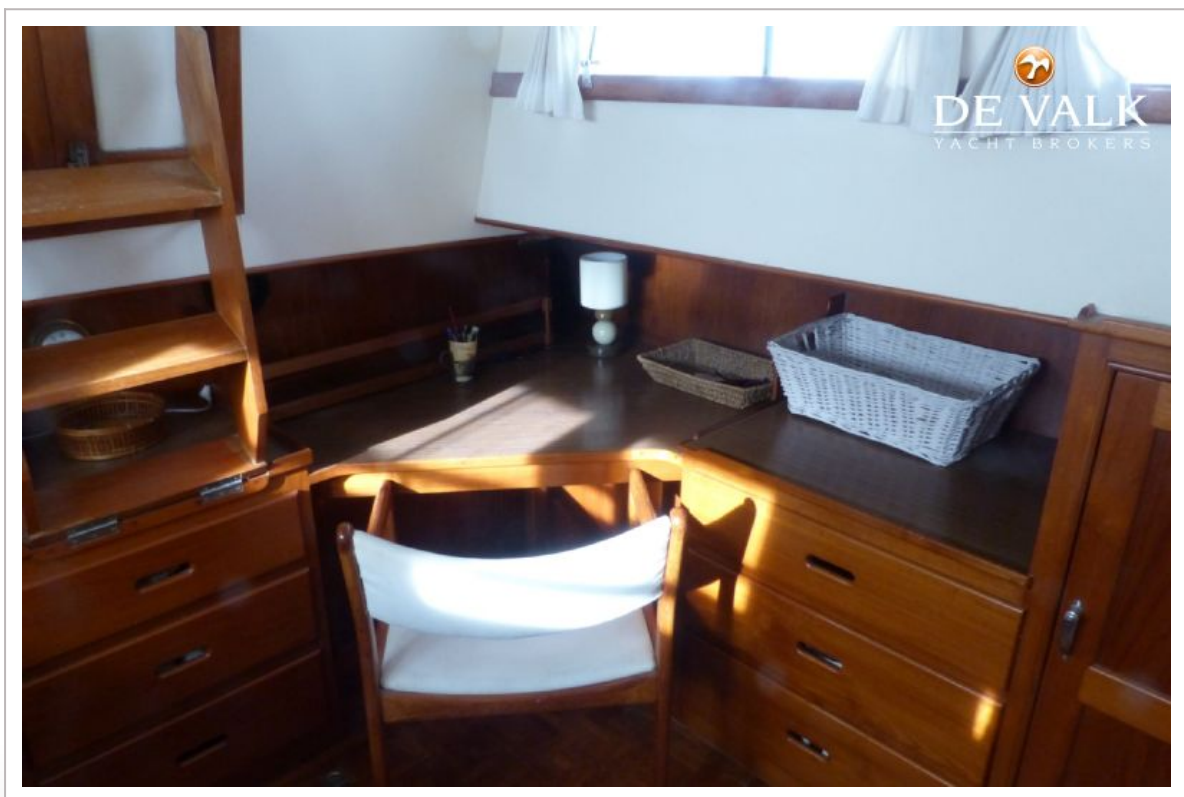
GRAND BANKS 42 CLASSIC



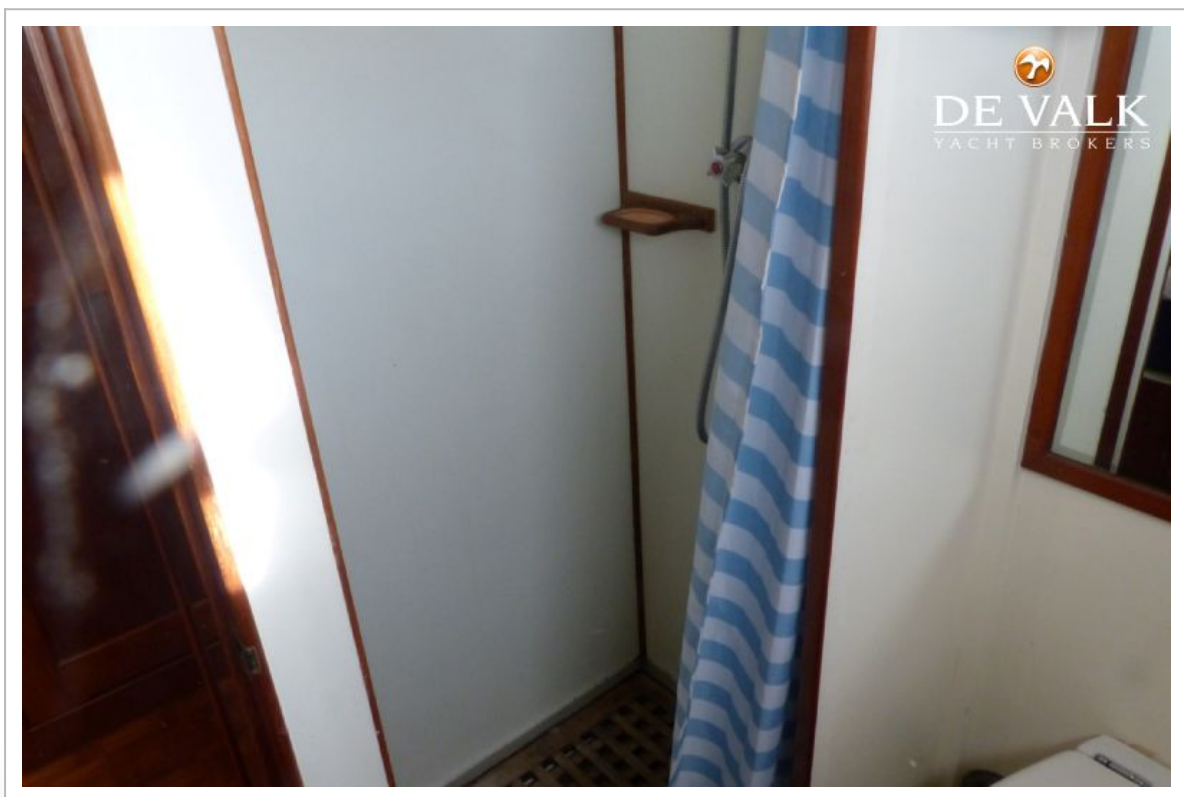
GRAND BANKS 42 CLASSIC



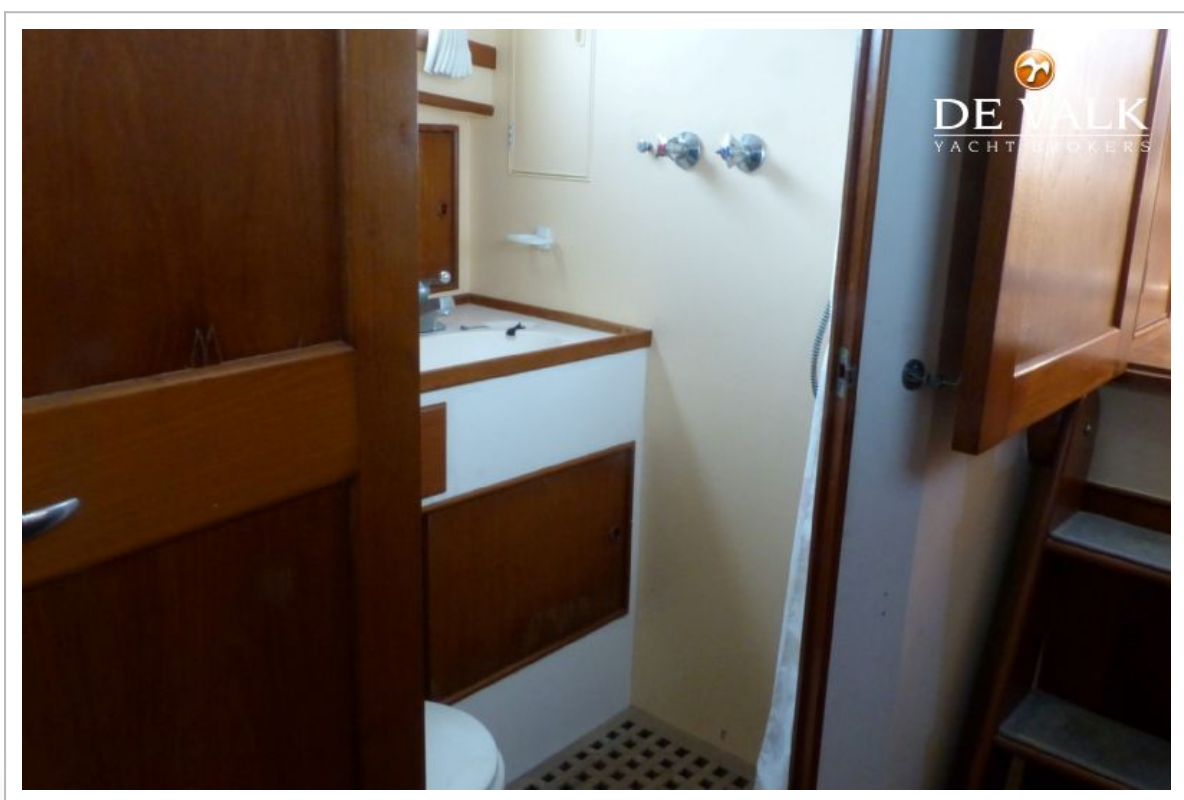
GRAND BANKS 42 CLASSIC



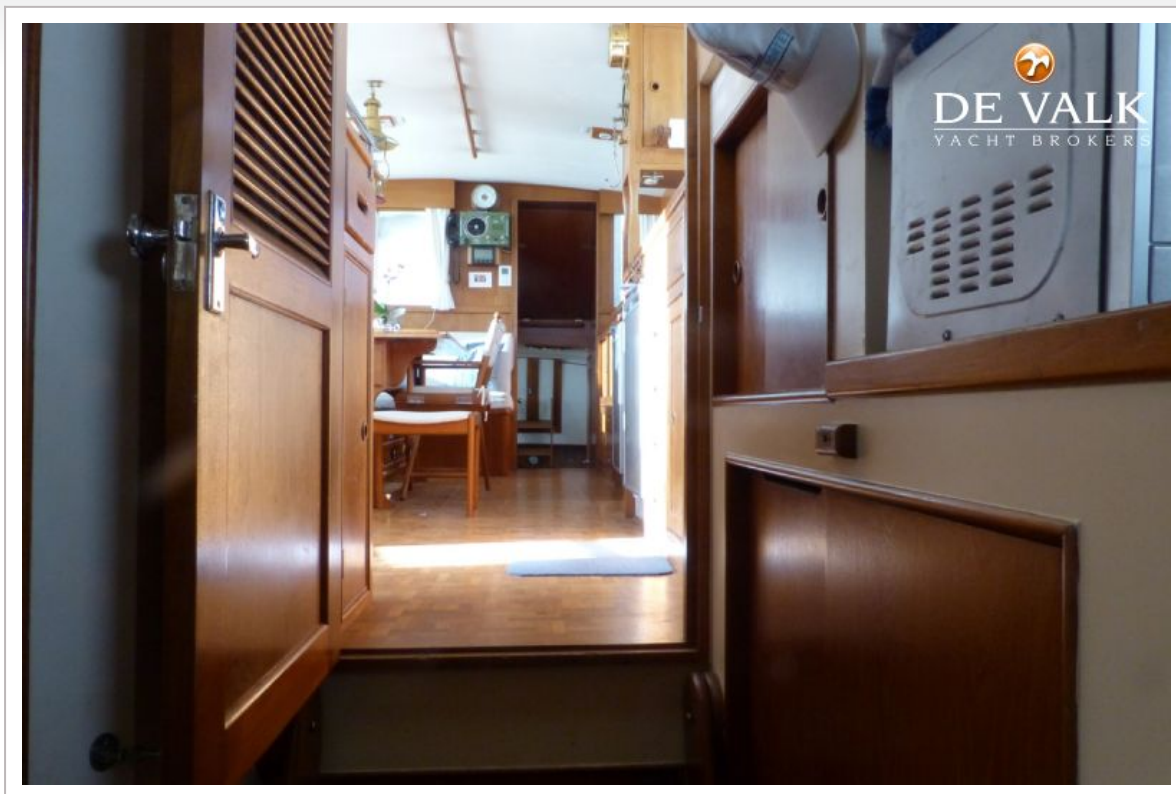
GRAND BANKS 42 CLASSIC



GRAND BANKS 42 CLASSIC



GRAND BANKS 42 CLASSIC



GRAND BANKS 42 CLASSIC

