



DE VALK
YACHT BROKERS



VINTAGE PASSENGER STEAMSHIP (MOTORYACHT)



DE VALK
YACHT BROKERS

VINTAGE PASSENGER STEAMSHIP (MOTORYACHT)

BROKER'S COMMENTS

The unique and antique Dutch Ship, named 'Succes', built in 1897, is the oldest two propeller driven Passenger Motorship in the Netherlands. The complete refit of the 'Succes' ended in 1994 and has been modernized and carefully maintained.

Arjen Hoeksma

SPECIFICATIONS

Dimensions	38.46 x 7.02 x 1,90 / 2.20 (m)	Builder	Fa. Weduwe Boele
Built	1897	Cabins	0
Material	Steel	Berths	0
Engine(s)	1 x Scania DS14-2 02A04 V8 diesel	Hp/Kw	340.00 (hp), 249.90 (kw)
Asking price	sold (VAT)	Lying	elsewhere / Not at sales office

CONTACT

Sales office	De Valk Loosdrecht B.V.	Telephone	+31 (0)35 582 90 30
Address	't Breukeleveense Meentje 6 1231LM Loosdrecht / Wijdmeren NL	E-mail	loosdrecht@devalk.nl

DISCLAIMER

These particulars are given in good faith as supplied but cannot be guaranteed.



VINTAGE PASSENGER STEAMSHIP (MOTORYACHT)

GENERAL

Model	VINTAGE PASSENGER STEAMSHIP (MOTORYACHT)
Type	motor yacht
LOA (m)	38,46
Beam (m)	7,02
Draft (m)	2,20
Draft min (m)	1,90
Air draft (m)	7,75
Year built	1897
Builder	Fa. Weduwe Boele
Country	The Netherlands
Displacement (t)	369
Hull material	steel
Hull colour	white
Superstructure material	steel
Deck material	teak Lower deck
Deck finish	paint Upper deck
Antifouling (year)	12-2013 high pressure cleaning and new primer and antifouling
Portholes	Steel, bronze
Fuel tank (litre)	steel 1x 22,000L
Level indicator (fuel tank)	yes
Fuel daytank (litre)	steel 1x 4,000L
Blackwater tank (litre)	steel 1x 6,000L
Wheel steering	yes
Inside helm position	yes
Extra info	Watertight transverse bulkheads 6 compartments
Extra info	(Rhine)certificate till November 2018
Extra info	Average thickness steal hull far above min. requirements (4,2mm)

ACCOMMODATION



VINTAGE PASSENGER STEAMSHIP (MOTORYACHT)

Cabins	yes
Berths	yes
Interior	teak
Floor	teak
Aft deck	yes
Heating	central heating Buderus (diesel) Radiators, Convector, Boiler
Air-conditioning	3 units (Carrier)
Galley	20 sq.m
Sink	Faucet and hand shower
Oven	Convection oven / steamer
Microwave	yes
Fridge	Walk-in refrigerator
Freezer	yes
Wine cooler	2
Hot water system	yes
Dishwasher	Meiko DV80-2
Ice maker	yes
Coffee maker	yes
Crockery	yes
Toilet	2x toilet unit (ladies/gentlemen separate) + crew toilet
Extra info	Max.capacity 110 passengers (+crew) - approved SI 6299 R

MACHINERY

No of engines	1
Make	Scania
Type	DS14-2 02A04 V8
HP	340
kW	249,90
Fuel	diesel
Maximum speed (kn)	8,6
Cruising speed (kn)	7,5



VINTAGE PASSENGER STEAMSHIP (MOTORYACHT)

Consumption (l/hr)	30-50
Engine hours	8600
Drive	shaft
Gearbox	Capitol HYC 7700(4:1) 3.000 hours after revision 2004
Bowthruster	Van Wijk 360 degrees bowjet (gearbox 2011) DAF 6 cyl. 220hp
Electric bilge pump	yes
Bilge alarm	yes
Generator	2x 60KVA Stamford + 2x Perkins diesel engines
Running hours generator	App. 7,750 hours each
Shorepower	yes
Extra info	15 m3 Steam boiler Biesbosch 1931, certificate till January 2019

NAVIGATION

Compass	2x antique Observer 8898 (compensated) and Bergen Nautic
Compass on flybridge	yes
VHF	2x Sailor TF144
Radar	Swiss JFS 364C, 2007 certificate 2010
Plotter/GPS	Navigation and GPS, touch panel pc Navigatie en GPS, touch panel pc
Radar/plotter	yes
AIS receiver	Ls ProtectW 2010 certificate 2010
Navigation lights	yes
Searchlight	1 + 2 deck spots

EQUIPMENT

Anchor	yes
Dinghy	yes
Horn	yes
Fenders	yes
Mooring lines	yes
Alarm system	Smoke, alarm and evacuation installation FC10-12A, FC10-04E



VINTAGE PASSENGER STEAMSHIP (MOTORYACHT)

Radio-cd player

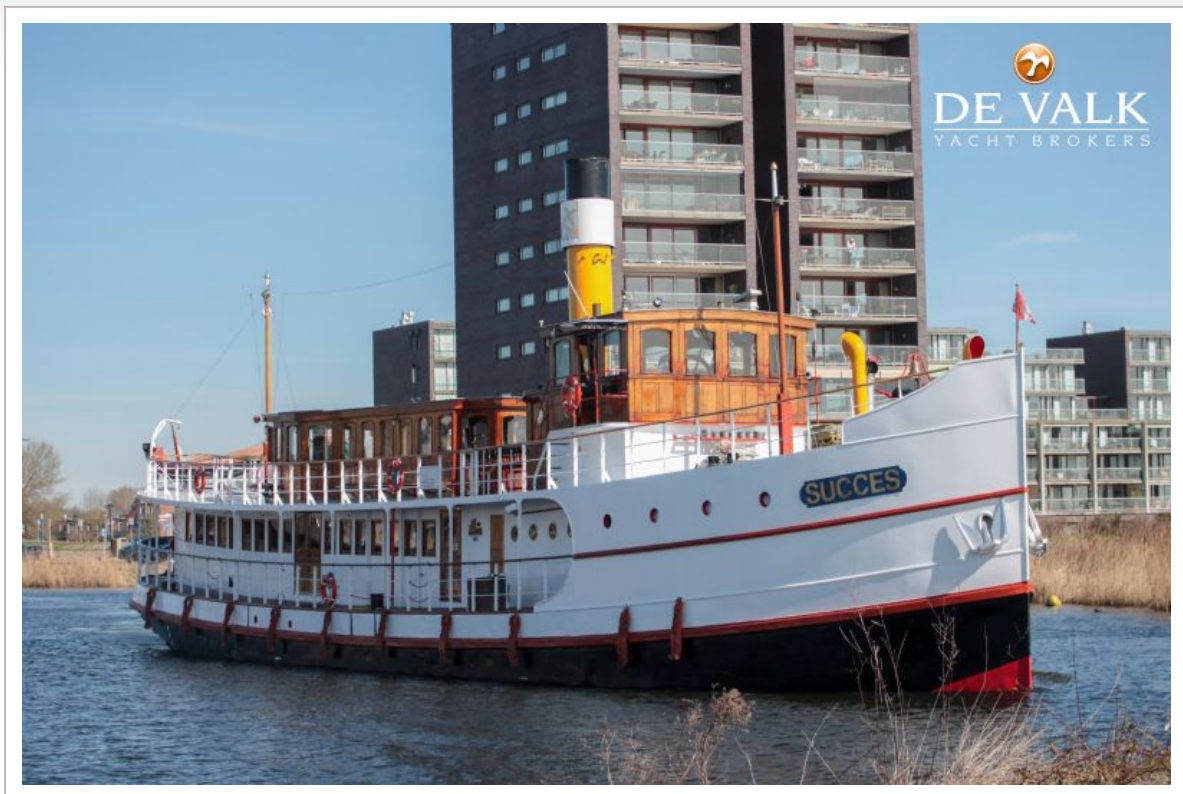
yes

Fire extinguisher

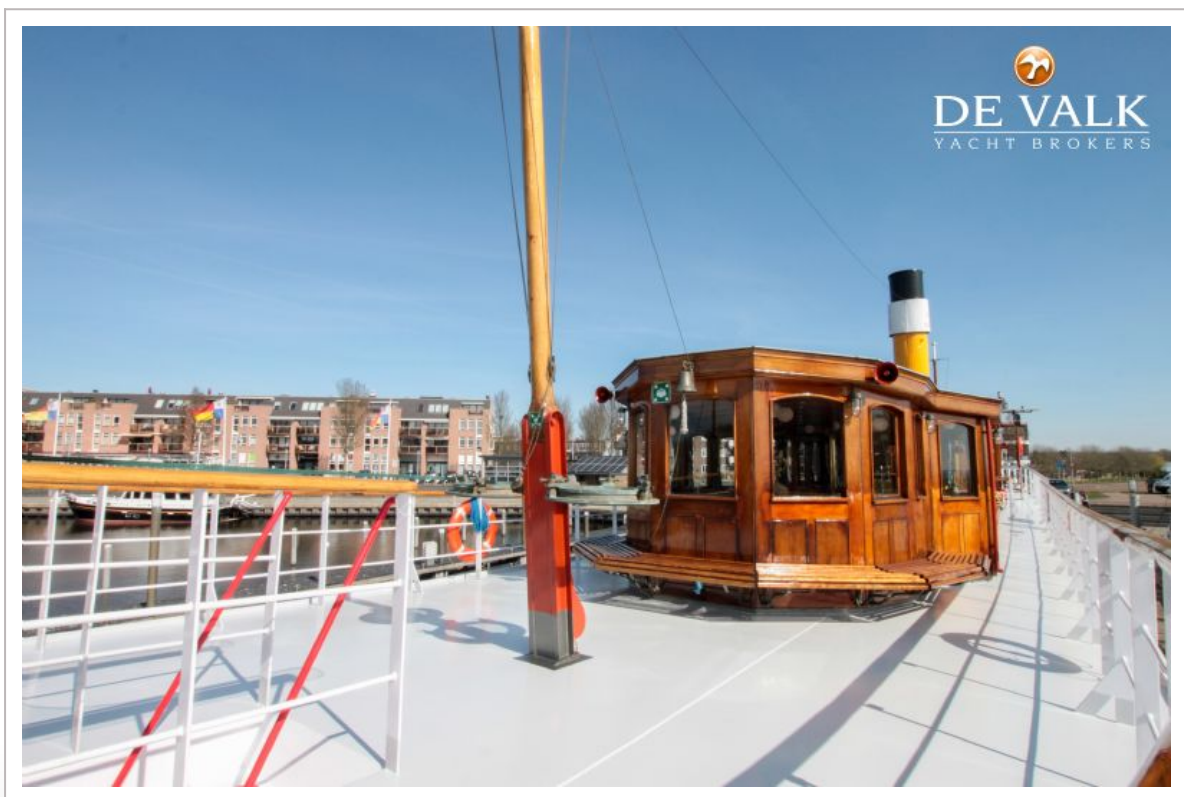
13x foam, 1x fryer oil, 4x fire hause



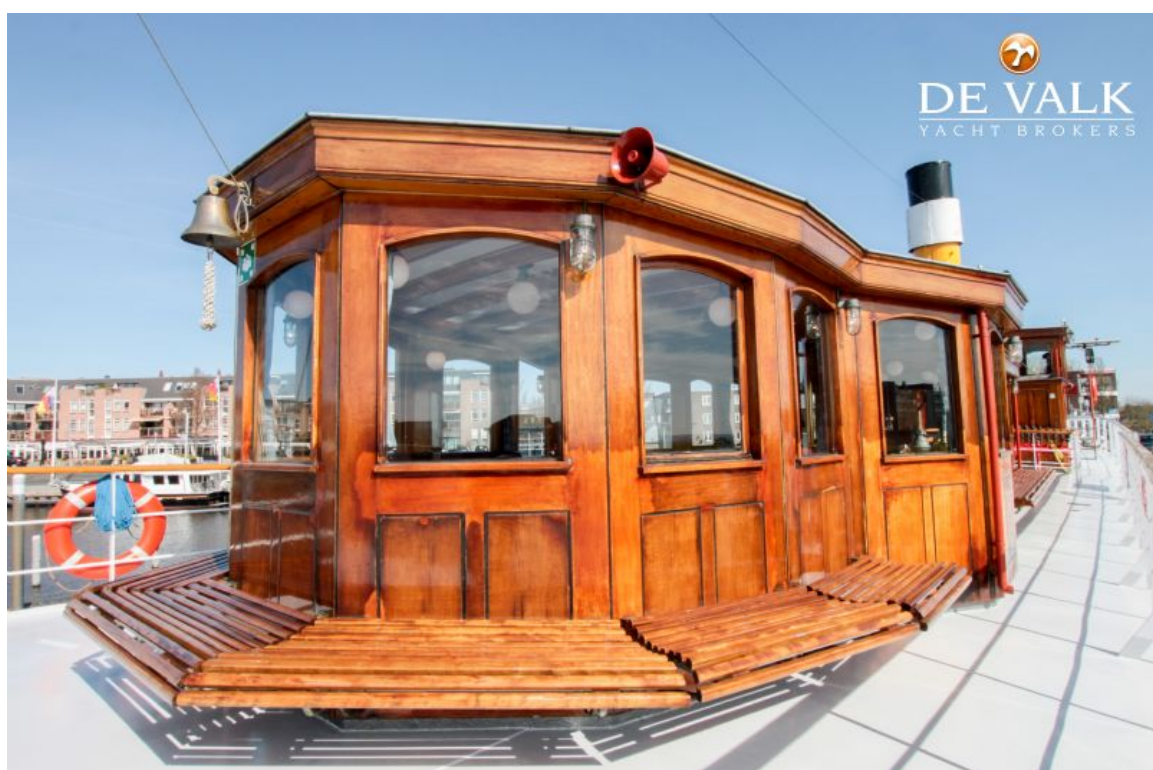
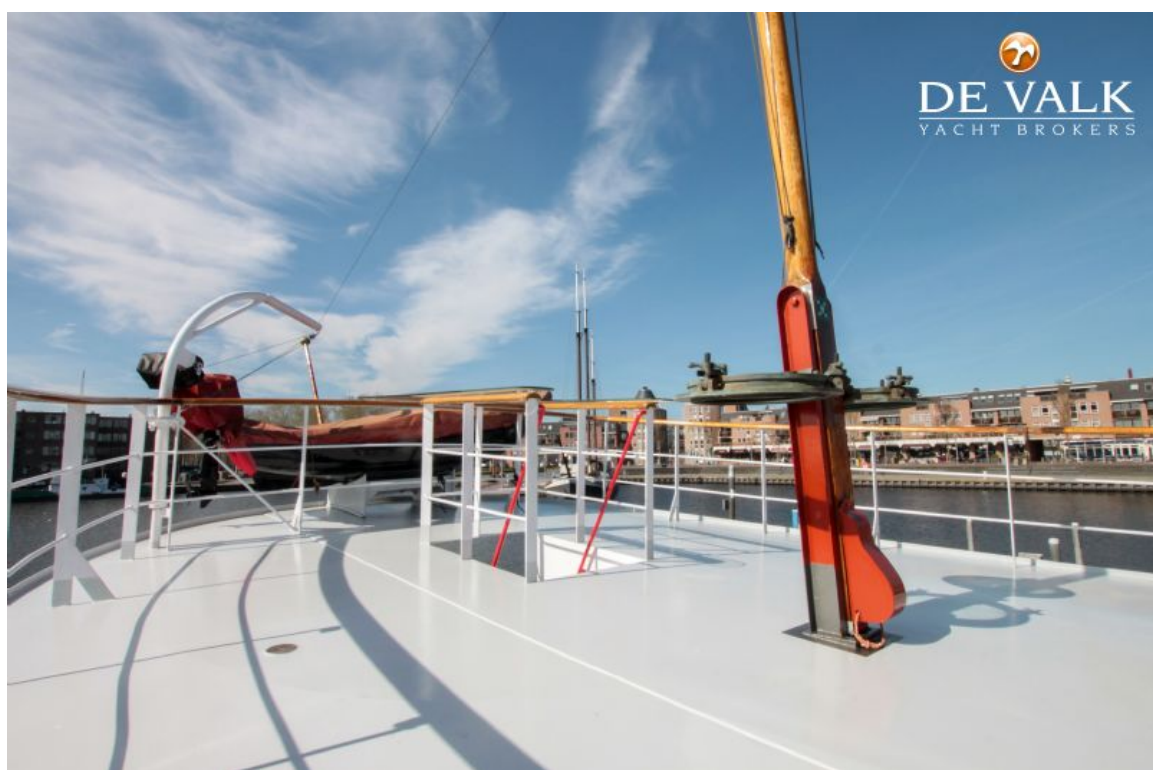
VINTAGE PASSENGER STEAMSHIP (MOTORYACHT)



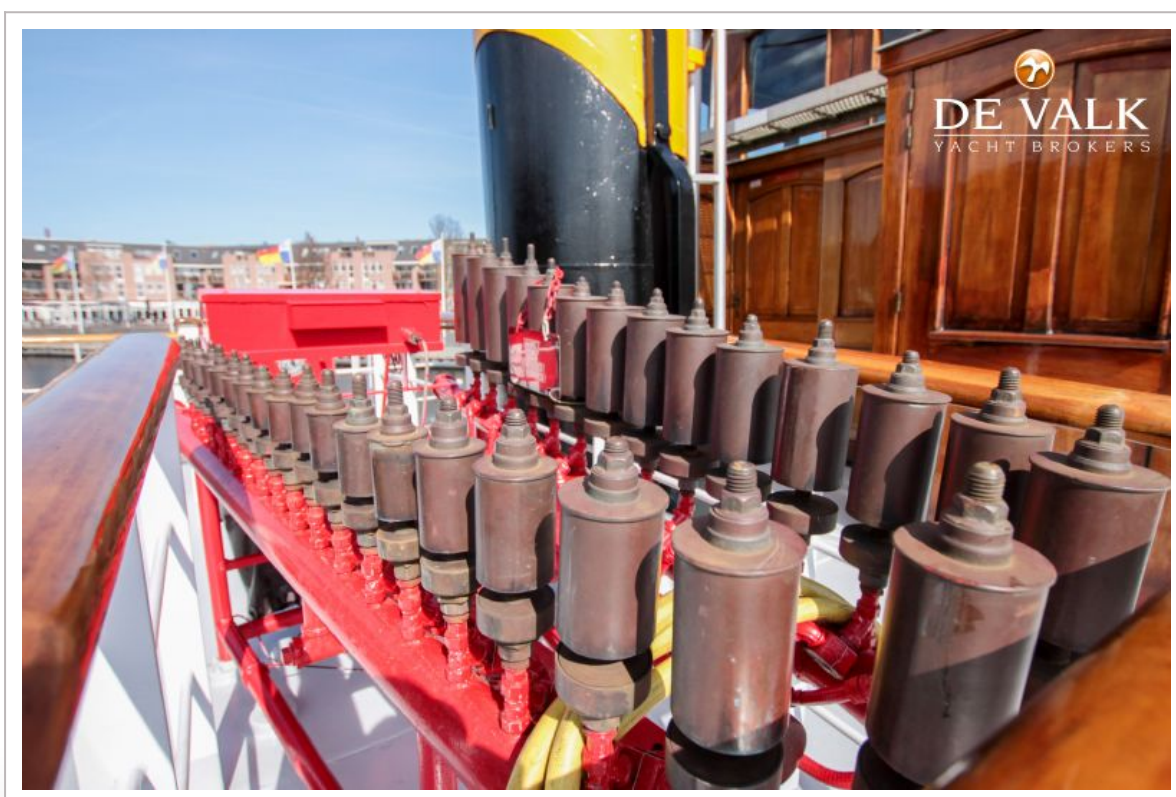
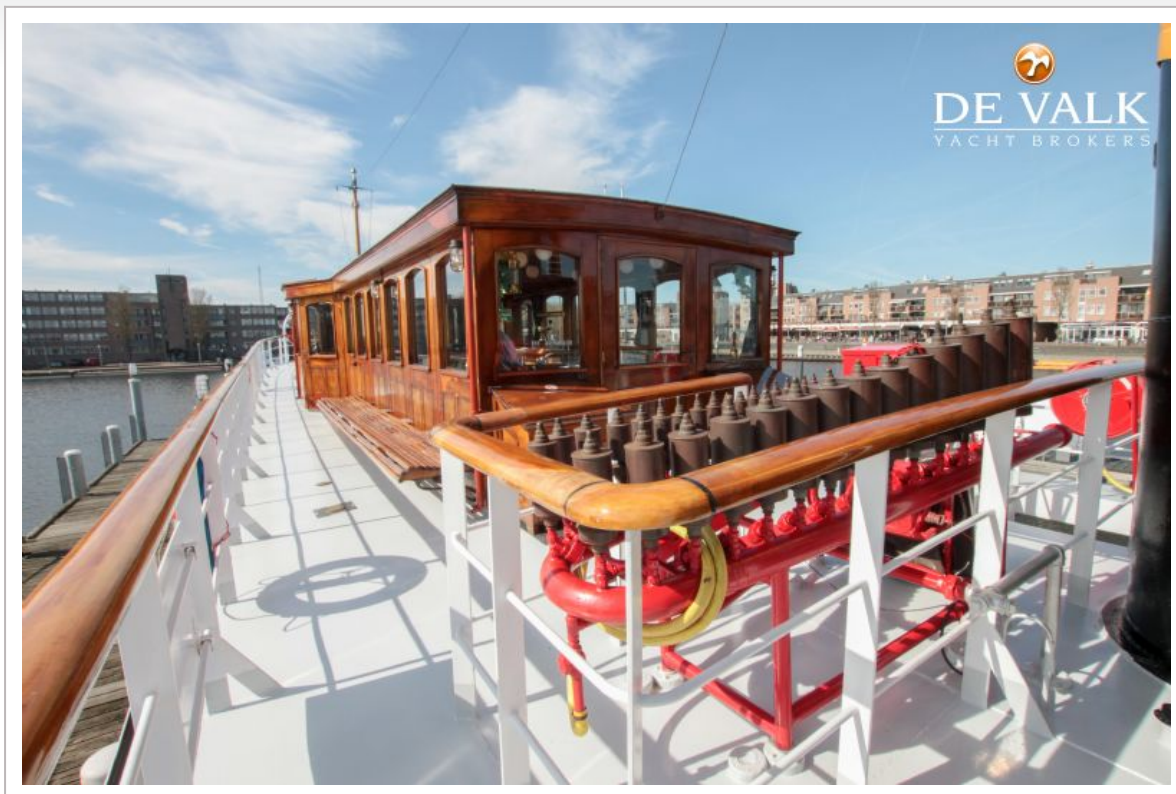
VINTAGE PASSENGER STEAMSHIP (MOTORYACHT)



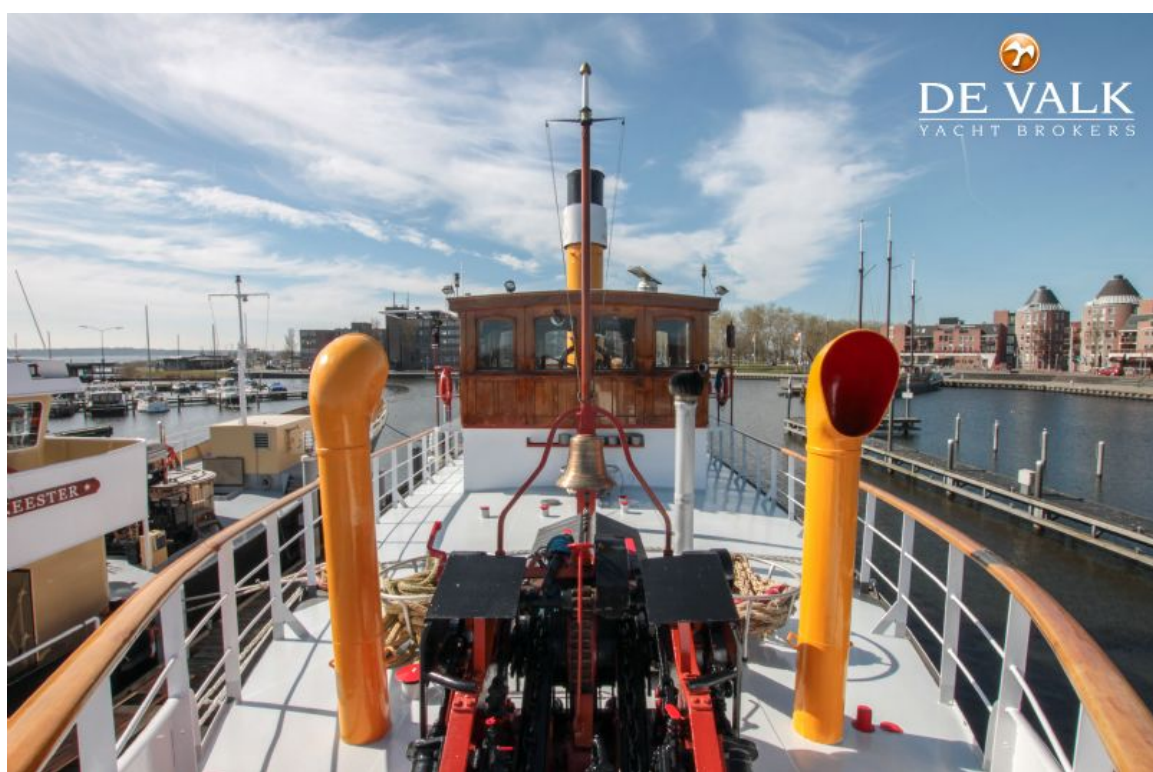
VINTAGE PASSENGER STEAMSHIP (MOTORYACHT)



VINTAGE PASSENGER STEAMSHIP (MOTORYACHT)



VINTAGE PASSENGER STEAMSHIP (MOTORYACHT)



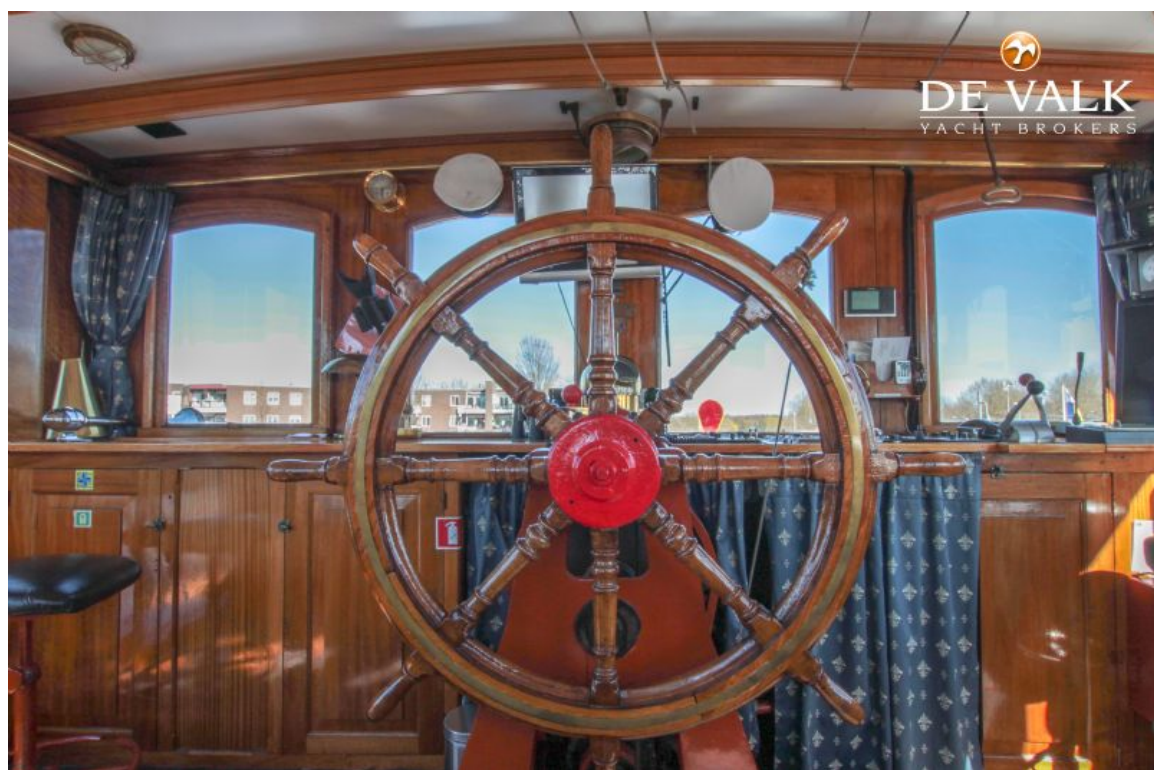
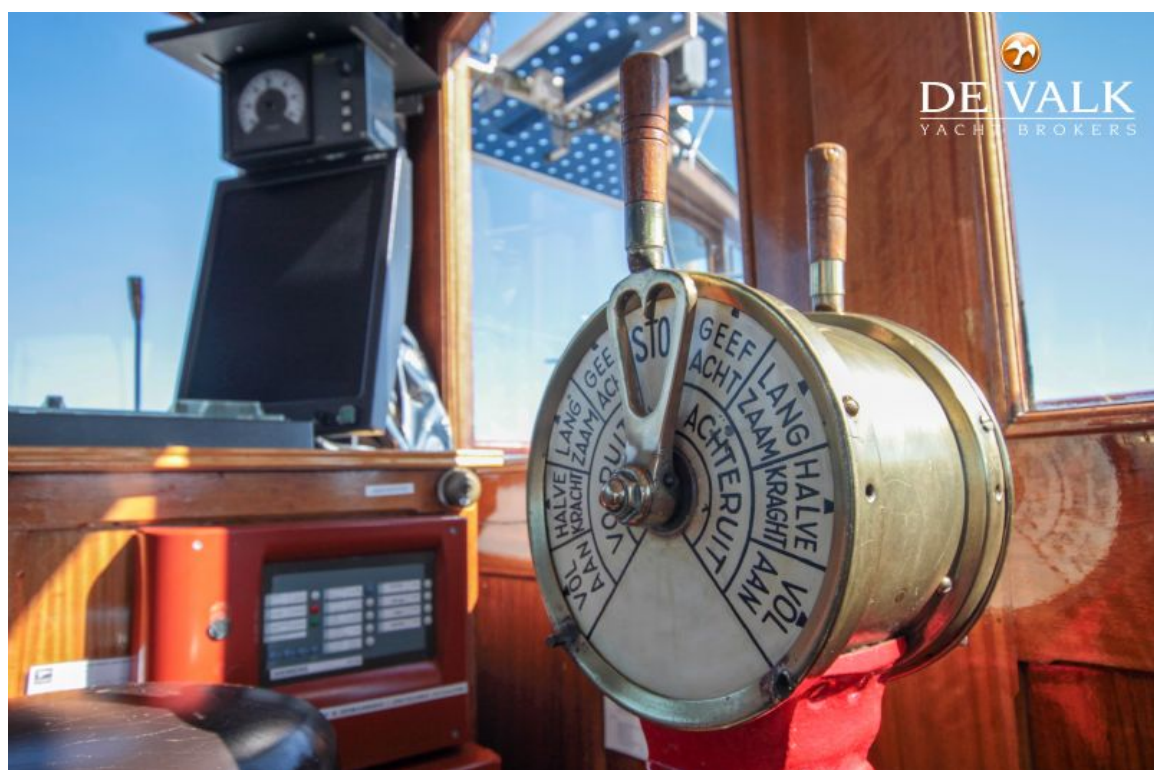
VINTAGE PASSENGER STEAMSHIP (MOTORYACHT)



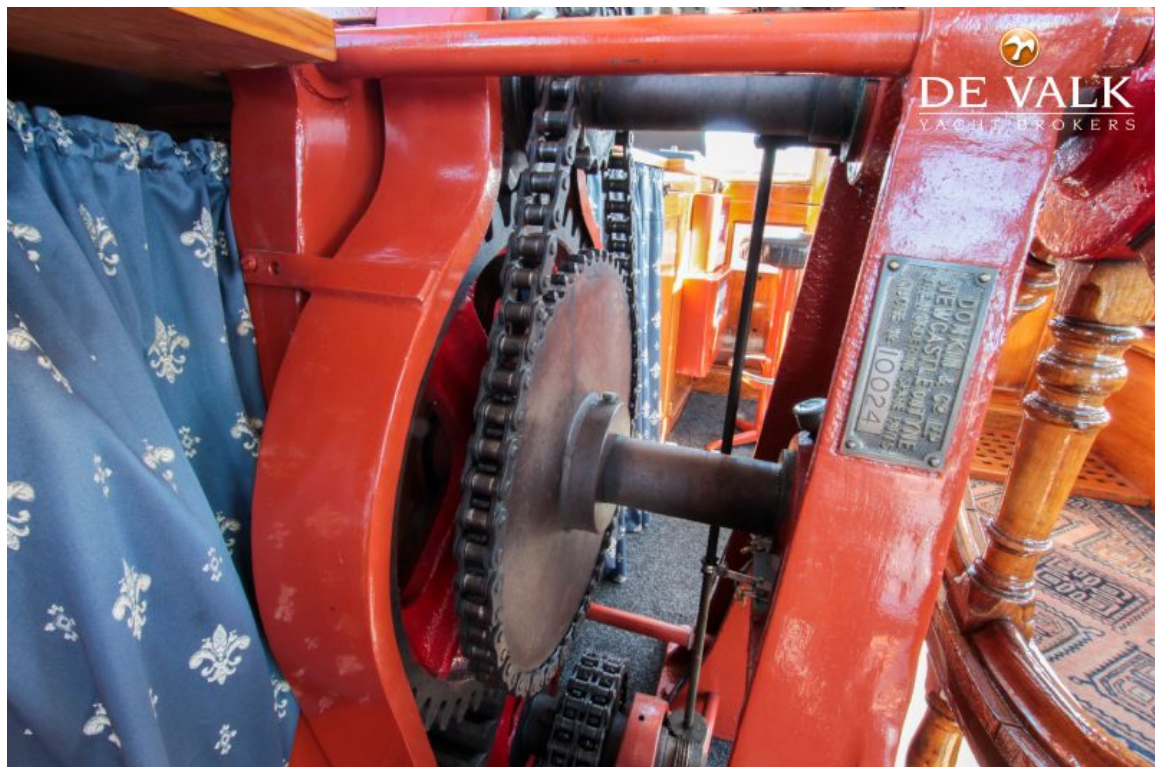
VINTAGE PASSENGER STEAMSHIP (MOTORYACHT)



VINTAGE PASSENGER STEAMSHIP (MOTORYACHT)



VINTAGE PASSENGER STEAMSHIP (MOTORYACHT)



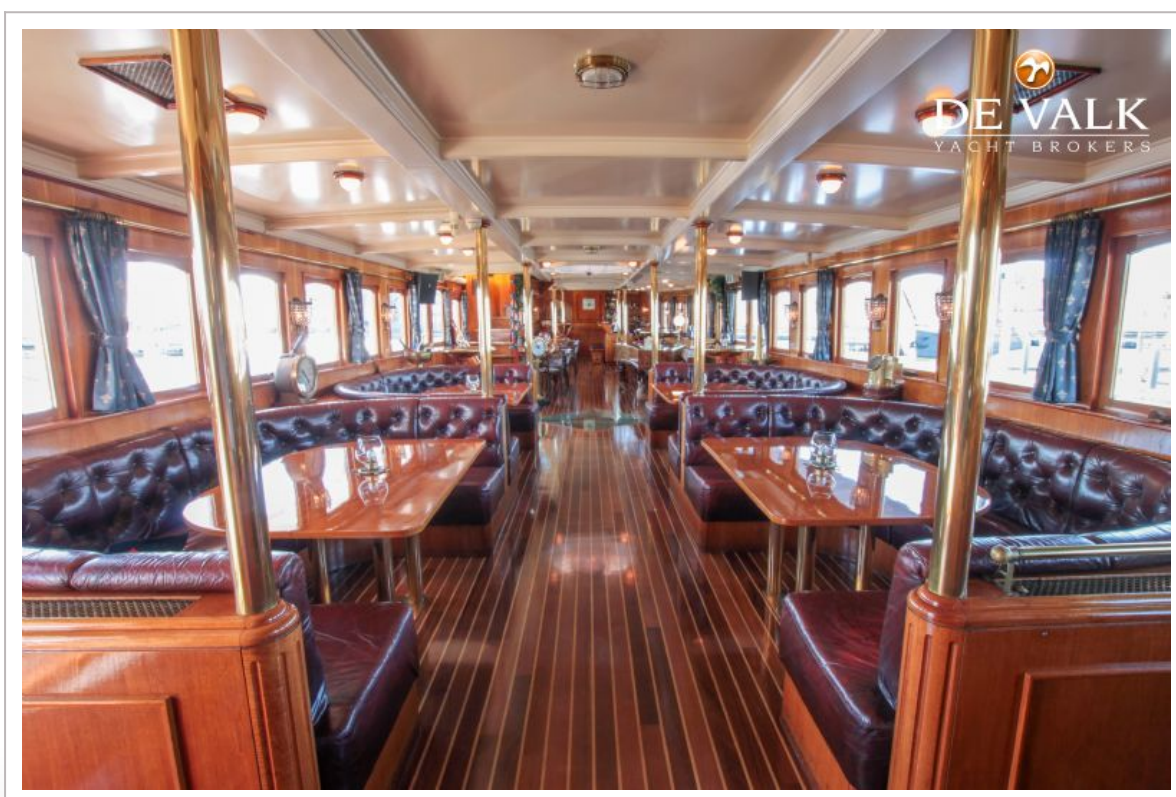
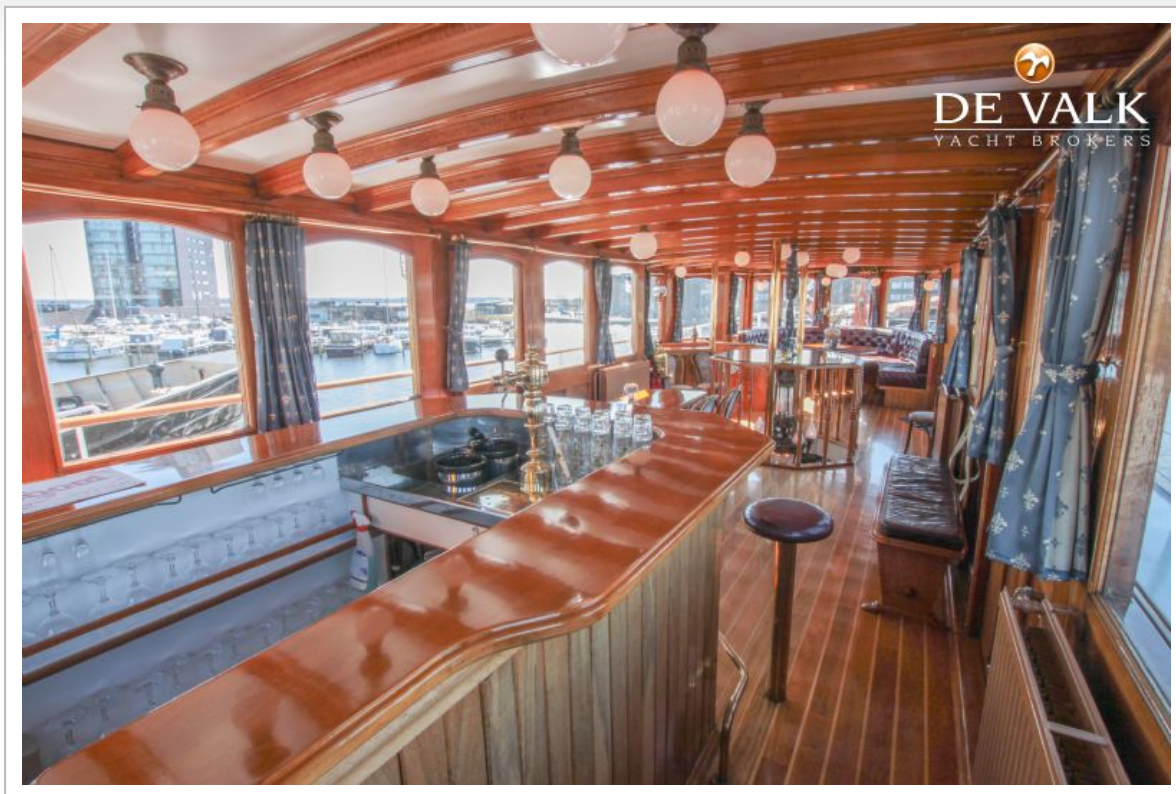
VINTAGE PASSENGER STEAMSHIP (MOTORYACHT)



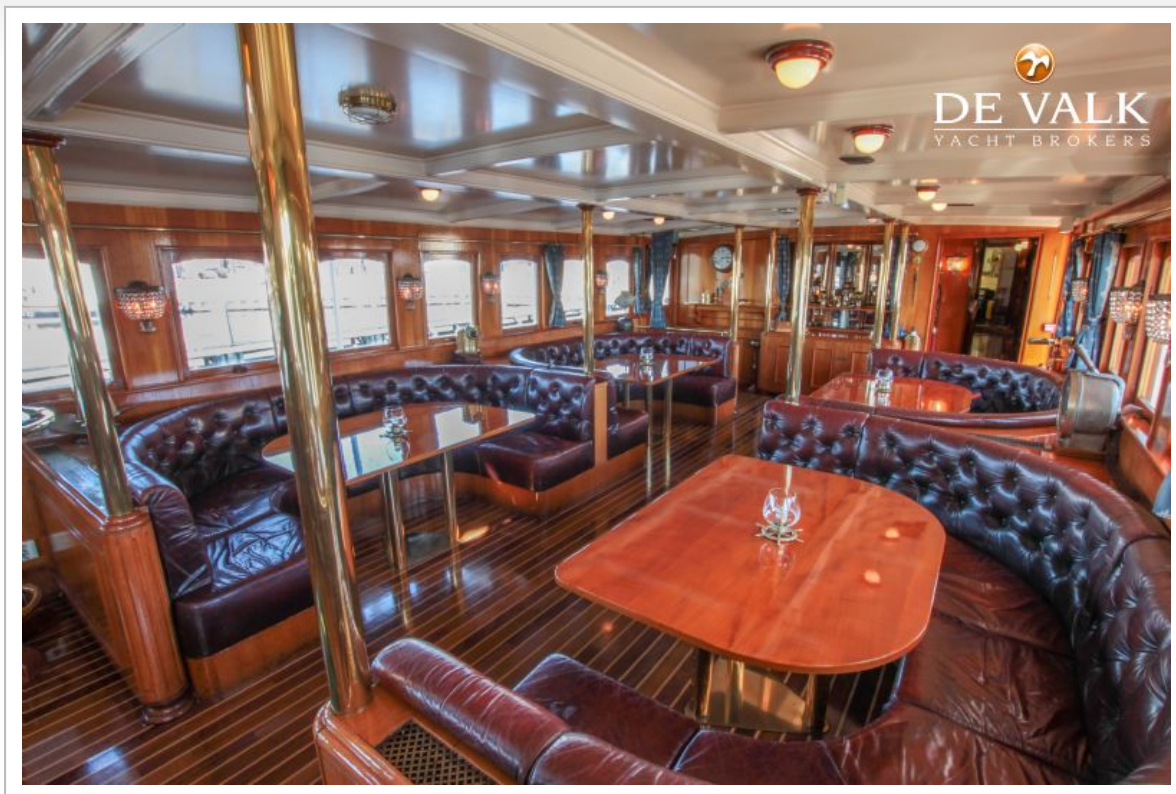
VINTAGE PASSENGER STEAMSHIP (MOTORYACHT)



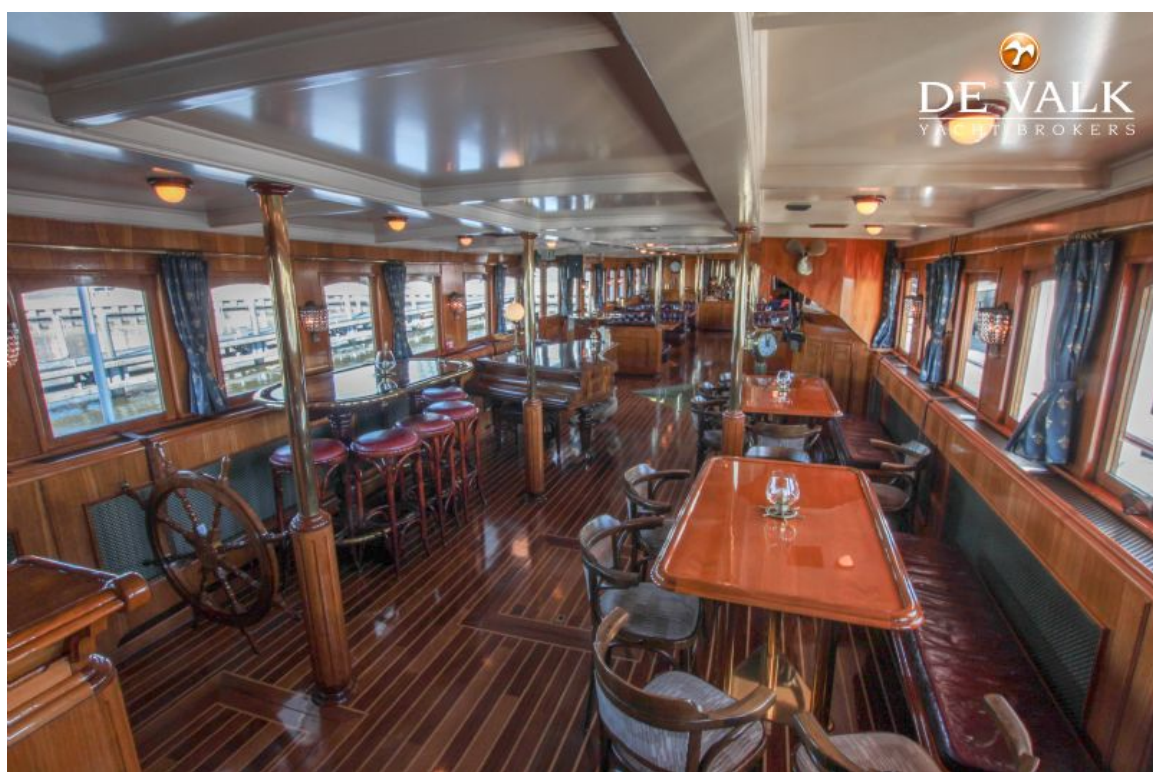
VINTAGE PASSENGER STEAMSHIP (MOTORYACHT)



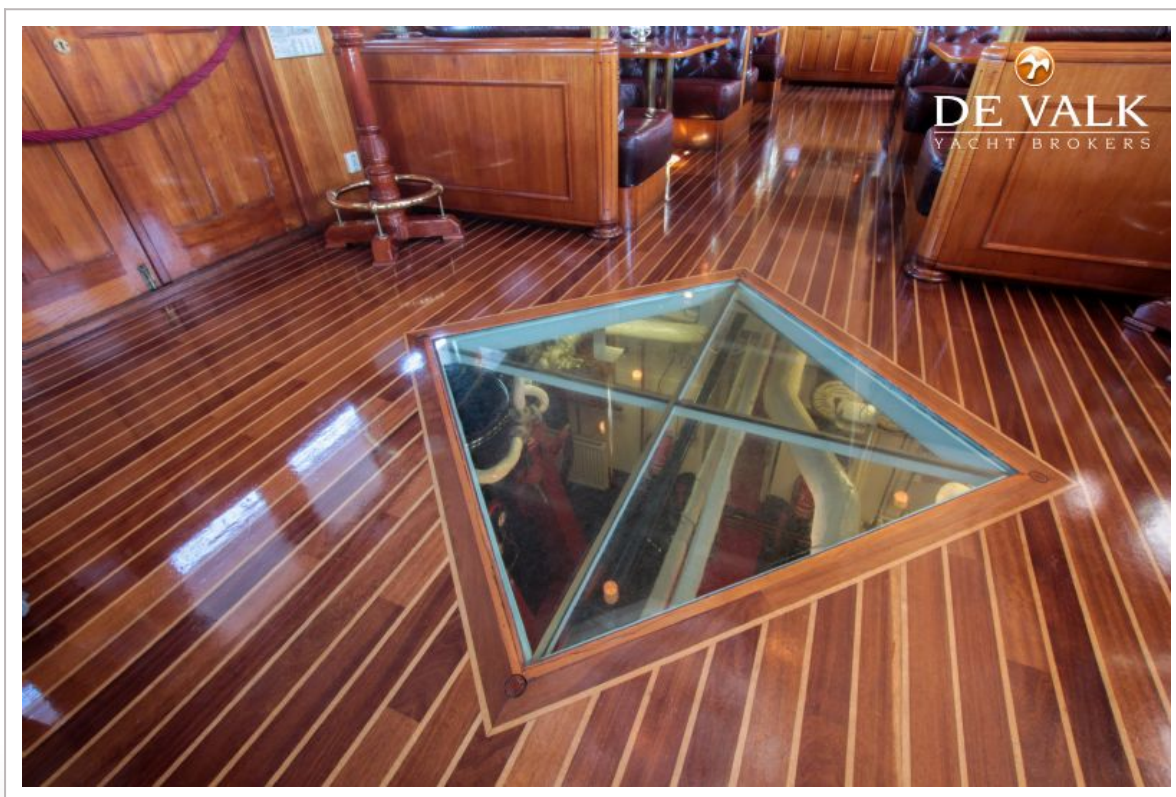
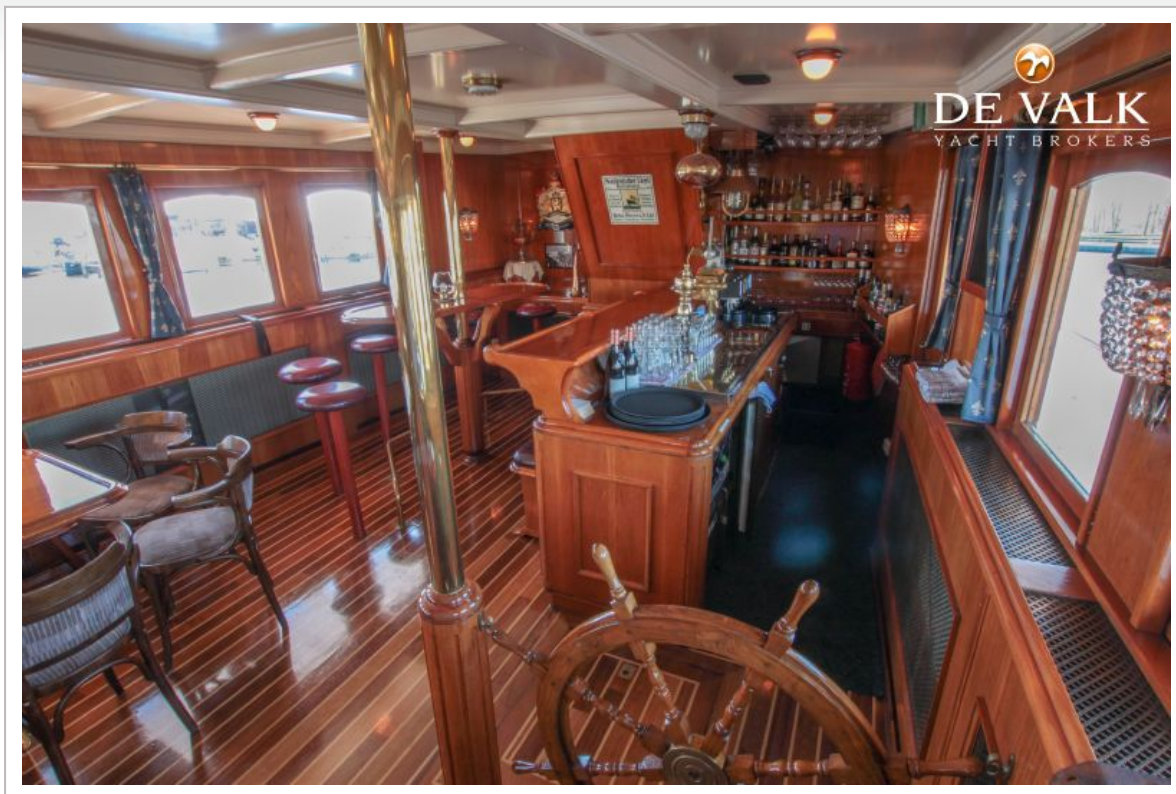
VINTAGE PASSENGER STEAMSHIP (MOTORYACHT)



VINTAGE PASSENGER STEAMSHIP (MOTORYACHT)



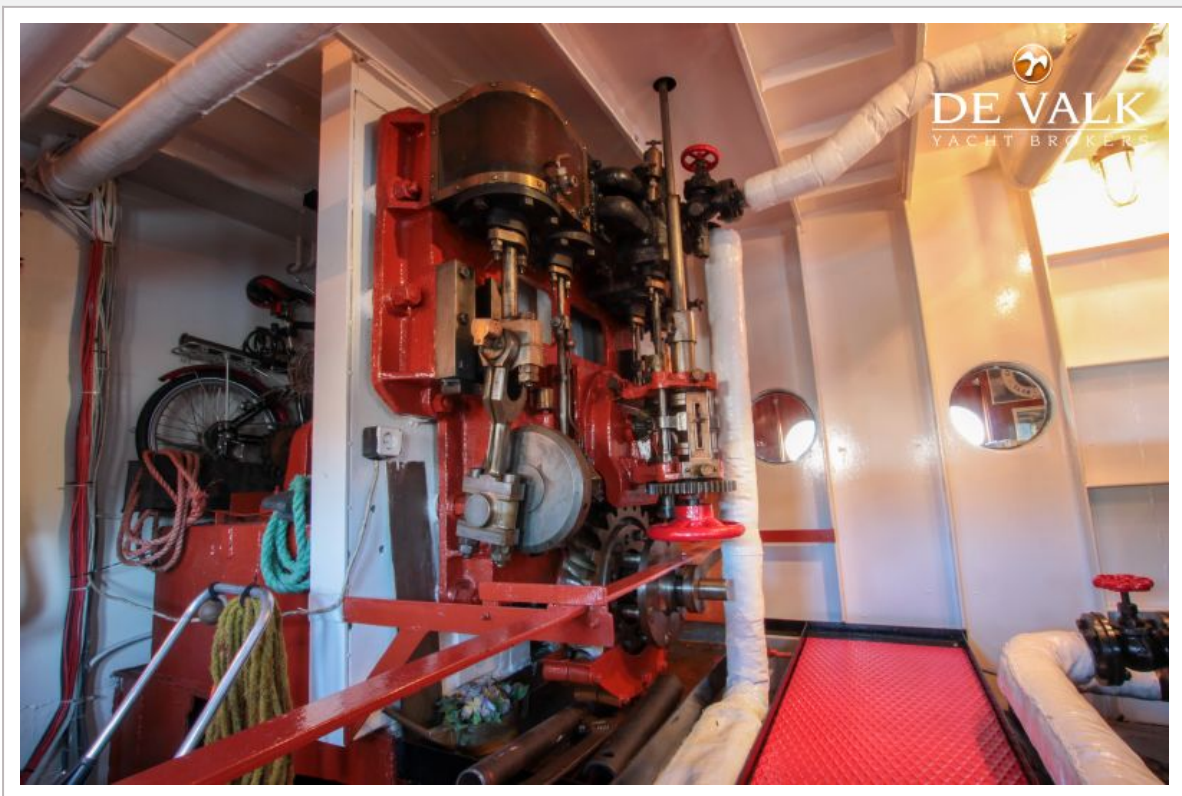
VINTAGE PASSENGER STEAMSHIP (MOTORYACHT)



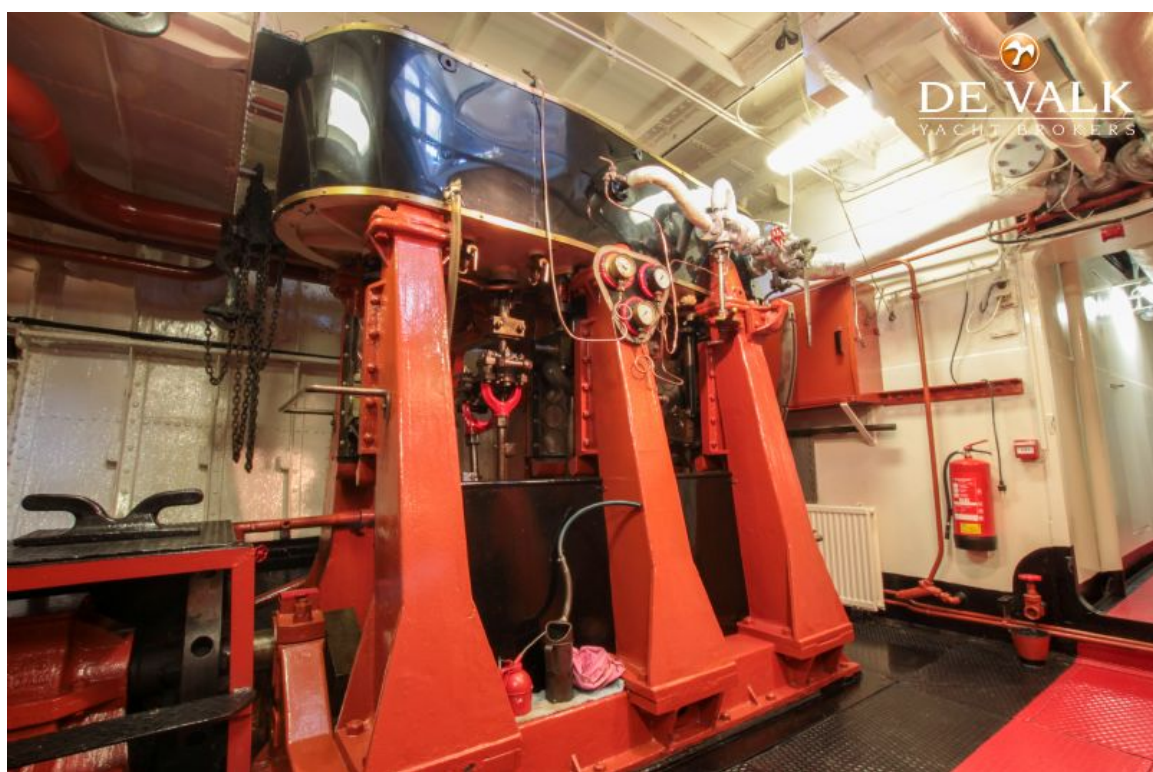
VINTAGE PASSENGER STEAMSHIP (MOTORYACHT)



VINTAGE PASSENGER STEAMSHIP (MOTORYACHT)



VINTAGE PASSENGER STEAMSHIP (MOTORYACHT)



VINTAGE PASSENGER STEAMSHIP (MOTORYACHT)

