



BAVARIA 45 CRUISER



BAVARIA 45 CRUISER

BROKER'S COMMENTS

This very well equipped and young Bavaria 45 Cruiser has three spacious cabins. Both aft cabins are equipped with their own bathroom, including a toilet and sink. The spacious owners cabin forward has a separate shower facility and a separate bathroom with a washbasin and electrical toilet. All toilets have their own black water tank. The open and spacious saloon has a good seating plan. At the stern you will find the electric drop down transom. "High Five" is lightly used, from the first owner and only privately used. Come over to see her in Monnickendam. We are open 7 days a week.

Harald Padberg

SPECIFICATIONS

Dimensions	14.27 x 4.35 x 2.10 (m)	Builder	Bavaria Yachtbau GmbH
Built	2011	Cabins	3
Material	GRP	Berths	6
Engine(s)	1 x Volvo Penta D2-55F diesel	Hp/Kw	53.00 (hp), 38.96 (kw)
Asking price	sold (VAT)	Lying	at sales office

CONTACT

Sales office	De Valk Monnickendam B.V.	Telephone	+31 (0)299 65 63 50
Address	Hoogedijk 6 1145 PM Katwoude NL	E-mail	monnickendam@devalk.nl

DISCLAIMER

These particulars are given in good faith as supplied but cannot be guaranteed.



BAVARIA 45 CRUISER

GENERAL

Model	BAVARIA 45 CRUISER
Type	sailing yacht
LOA (m)	14,27
Beam (m)	4,35
Draft (m)	2,10
Air draft (m)	20,75
Headroom (m)	2,05
Year built	2011
Builder	Bavaria Yachtbau GmbH
Country	Germany
Designer	Farr Yachtdesign / BMW Design
Displacement (t)	12,6
Ballast (tonnes)	lead in GRP
CE norm	A
Hull material	GRP
Hull colour	white
Hull shape	S-bilged
Keel type	fin keel
Superstructure material	GRP
Deck material	GRP
Deck finish	non-skid moulded in
Superstructure deck finish	non-skid moulded in
Cockpit deck finish	teak
Antifouling (year)	2017 + hull fully polished
Window material	perspex
Deckhatch	11 X
Portholes	8 X
Fuel tank (litre)	polyethylene 208 L
Level indicator (fuel tank)	digital
Freshwater tank (litre)	polyethylene 2 X 360 L



BAVARIA 45 CRUISER

Level indicator (freshwater)	digital
Blackwater tank (litre)	polyethylene
Level indicator (blackwater)	digital
Blackwater tank extraction	deck extraction
Greywater tank (litre)	polyethylene
Level indicator (greywater)	digital
Wheel steering	hydraulic
Emergency tiller	yes
Extra info	yes

ACCOMMODATION

Cabins	3
Berths	6
Interior	oak
Floor	teak and holly
Open cockpit	yes
Saloon	yes
Headroom saloon (m)	2,05
Heating	diesel ducted hot air Webasto Air Top Evo M
Chart table	yes
Dinette	yes
Opening door to cockpit	yes
Galley	yes
Countertop	corian
Sink	stainless steel 2 X
Cooker	2-burner
Oven	yes
Microwave	Baumatic
Fridge	Waeco 110 L
Hot water system	220V + engine
Water pressure system	electrical



BAVARIA 45 CRUISER

Owners cabin	double bed
Bed length (m)	2,00
Wardrobe	hanging and shelves
Bathroom	en suite
Toilet	en suite
Toilet system	electric
Wash basin	at the toilet
Shower	en suite
Guest cabin 1	double bed
Bed length (m)	2,03
Wardrobe	hanging and shelves
Bathroom	en suite
Toilet	en suite
Toilet system	manual
Wash basin	in the bathroom
Guest cabin 2	double bed
Bed length (m)	2,03
Wardrobe	hanging and shelves
Bathroom	en suite
Toilet	en suite
Toilet system	manual
Wash basin	in the bathroom
Shower	en suite
Extra info	Neptune mattress + slatted bottom and vanity table to starboard in owners cabin.
Extra info	LED lights throughout the boat, Large deck hatches with all in one mosquito screens and black out blinds. Centreline seat around the dining table with big storage below.

MACHINERY

No of engines	1
Make	Volvo Penta



BAVARIA 45 CRUISER

Type	D2-55F
HP	53,00
kW	38,96
Fuel	diesel
Year installed	2011
Maximum speed (kn)	10
Cruising speed (kn)	8
Range (nm)	400
Engine hours	676
Engine cooling system	freshwater heat exchanger
Drive	sail-drive
Engine controls	bowden cable
Bowthruster	electric Sidepower SE80/185T
Propeller blades	3
Electric bilge pump	yes
Start battery	1 X 95Ah/800A
Service battery	2 X 140Ah/800A
Bowthruster battery	1 X 95Ah/800A
Windlass battery	1 X 95Ah/800A
Battery monitor	yes
Battery charger	Quick SBC advanced plus 12 / 45Ah acculader
Battery charger/inverter	yes
Shorepower	with cable
Extra info	All batteries replaced in 2016 and (new) battery added at bowthruster. Entirely new phase installed in 2016 to improve the regular Bavaria charging system.

NAVIGATION

Compass	2 X Plastimo Olympic 135
Depth sounder/log	yes
Windset	Garmin GWS10
VHF	Garmin VHF 100i



BAVARIA 45 CRUISER

Autopilot	Garmin GHC10
Radar	Garmin GMR 18/24
Radar/GPS/plotter	Garmin GPSmap 4008
Electronic chart(s)	Garmin Blue Chart G2 Vision

EQUIPMENT

Sprayhood	cleaned 2017
Cockpit table	yes
Bathing platform	Electrical
Deck shower	yes
Anchor	Delta
Windlass	electrical Remote controled
Capstan	yes
Outboard support	yes
Sea railing	wire
Railing side opening gates	2 X
Life raft	container Sea-Safe - 6 pers.
Fenders	10 X
Mooring lines	yes
Fire extinguisher	2 X
Extra info	Winter tent (canvas blue) over entire ship. Divisible at the mast in 2 parts.

RIGGING

Rigging	9/10
Standing rigging	wire
Brand mast	Seldén
Material mast	aluminium
Spreaders	2 X
Mainsail	Elvström
Stoway mast	yes



BAVARIA 45 CRUISER

Genoa	Elvström
Genoa furler	yes
Reefing System	main in-mast furling
Backstay adjuster	mechanical
Boomvang	gasspring
Genoa sheetwinches	2 x electrical Lewmar 54
Multifunctional winches	halyard/sheet winches Lewmar 46



BAVARIA 45 CRUISER



BAVARIA 45 CRUISER



BAVARIA 45 CRUISER



BAVARIA 45 CRUISER



BAVARIA 45 CRUISER



BAVARIA 45 CRUISER



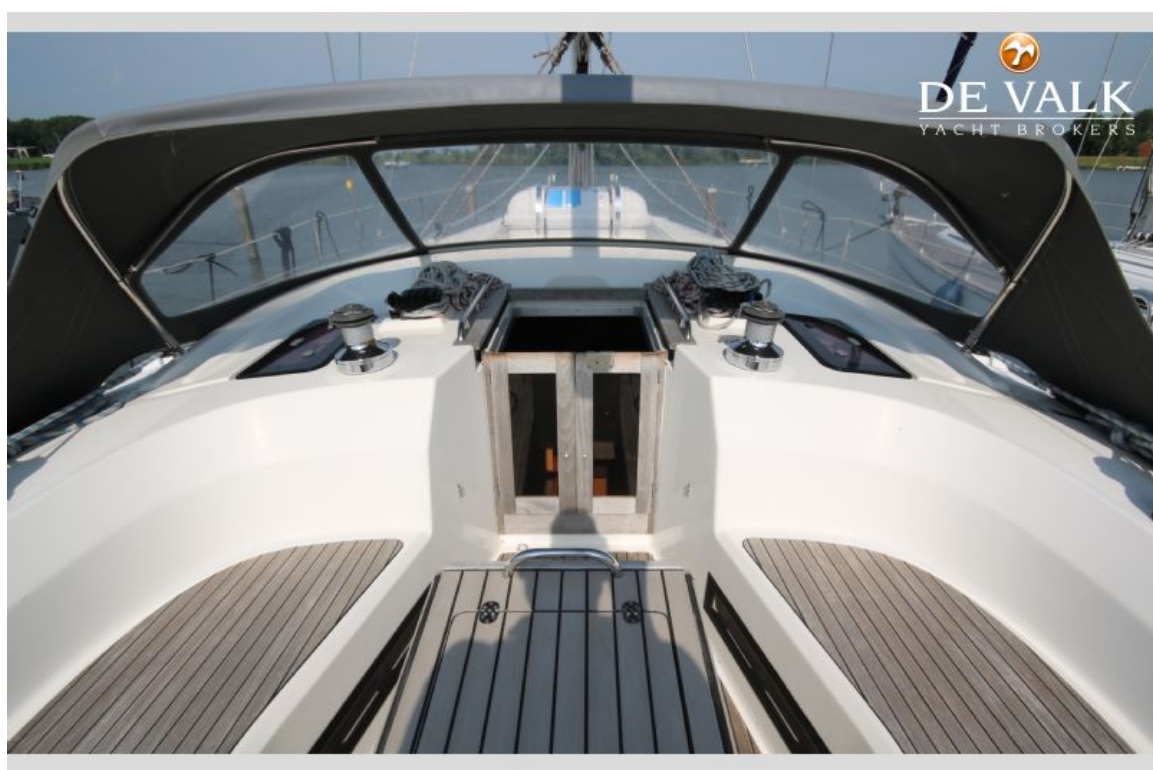
BAVARIA 45 CRUISER



BAVARIA 45 CRUISER



BAVARIA 45 CRUISER



BAVARIA 45 CRUISER



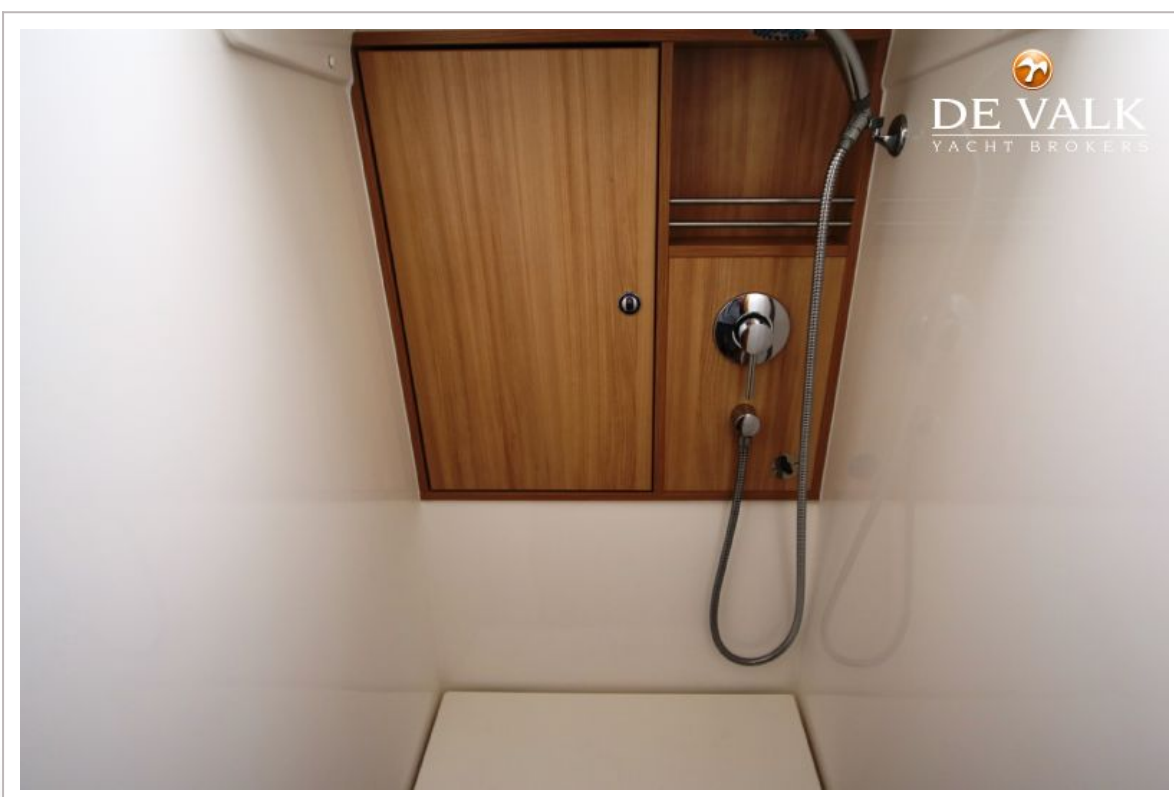
BAVARIA 45 CRUISER



BAVARIA 45 CRUISER



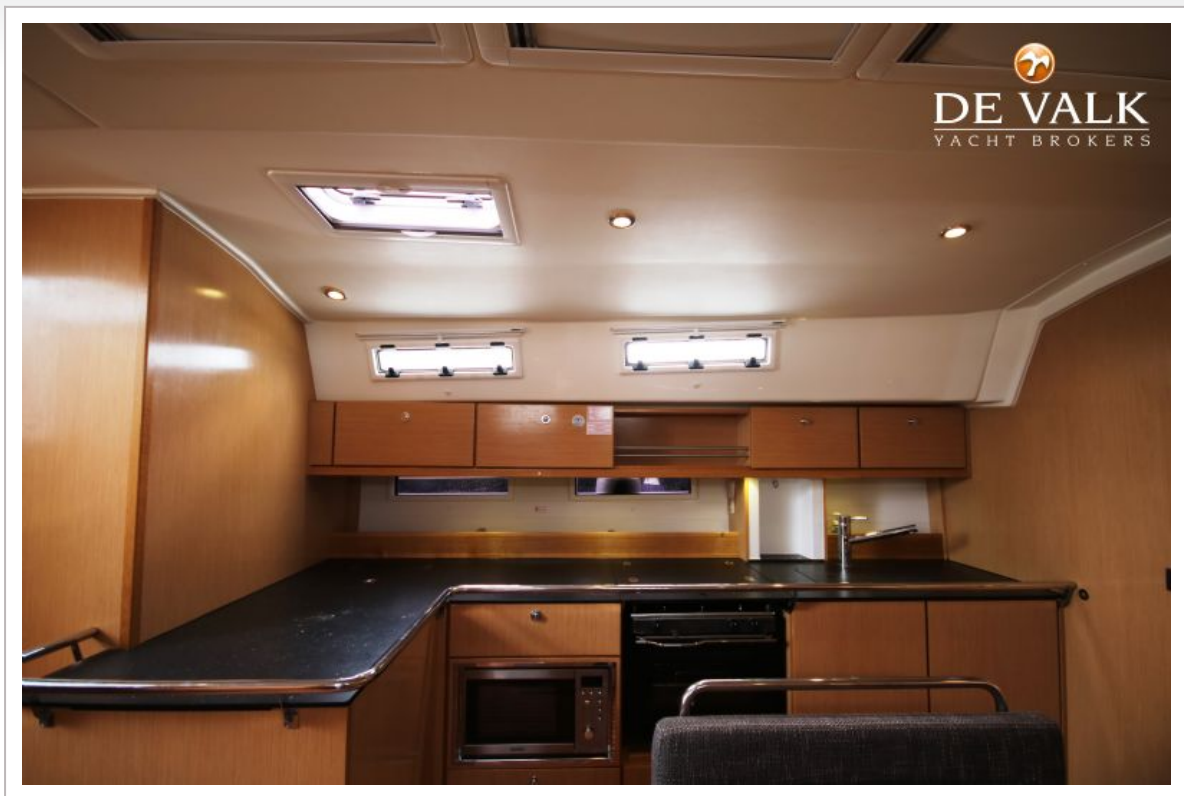
BAVARIA 45 CRUISER



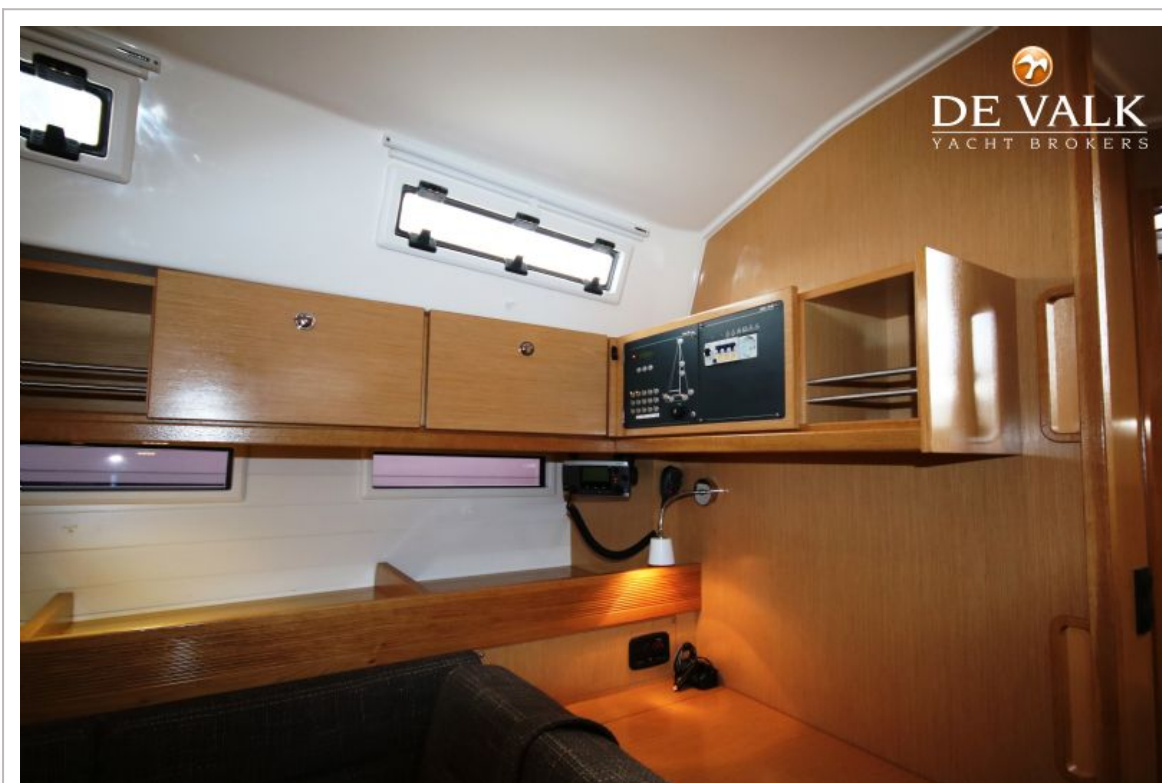
BAVARIA 45 CRUISER



BAVARIA 45 CRUISER



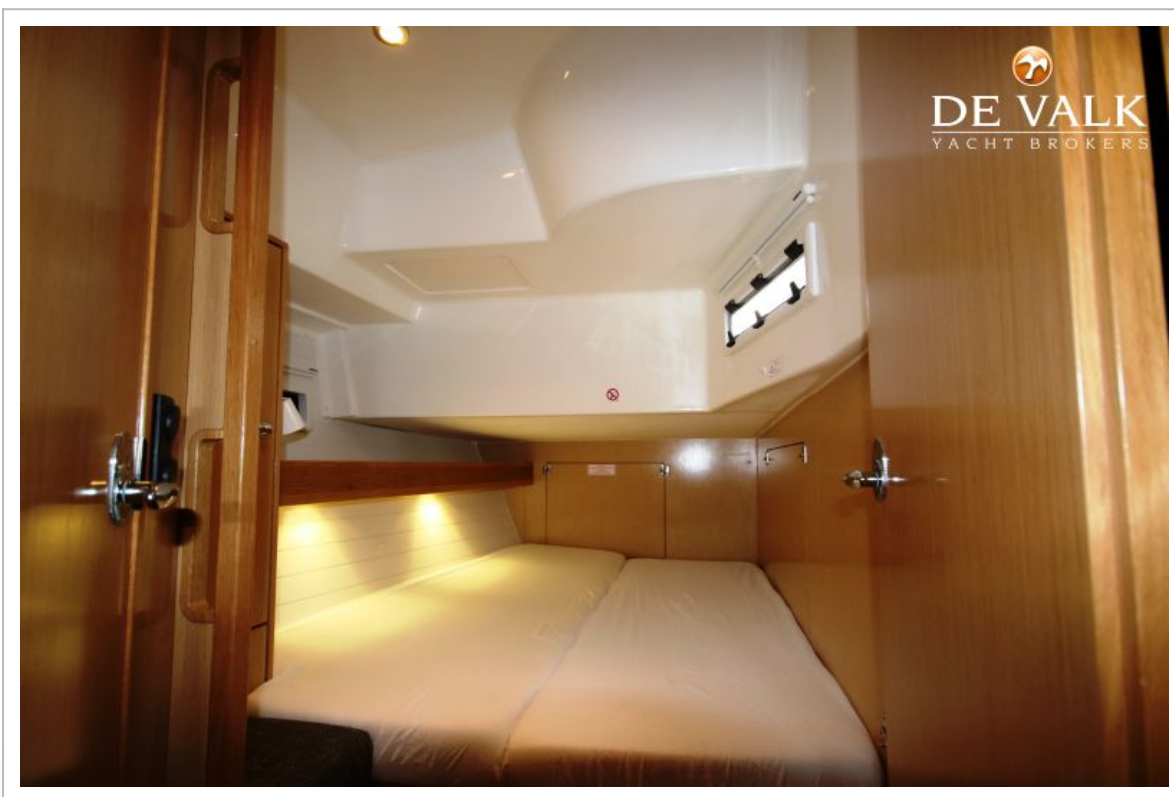
BAVARIA 45 CRUISER



BAVARIA 45 CRUISER



BAVARIA 45 CRUISER



BAVARIA 45 CRUISER

