



PRINCESS 60

BROKER'S COMMENTS

Superb motor yacht, offered in excellent condition and very well equipped. The lovely teak interior and the special polish treatment give her the "as new" look she has. Survey report 2016 available, all advices according report repaired, including new watertanks. Full service both engines by MAN specialist. Dieseltanks cleaned, total costs € 45.000,- invoices on request.

Arjen Hoeksma

SPECIFICATIONS

Dimensions	18.07 x 4.72 x 1.19 (m)	Builder	Princess Yachts
Built	1998	Cabins	3
Material	GRP	Berths	6
Engine(s)	2 x MAN D2842 LE402 diesel	Hp/Kw	2 x 800.00 (hp), 588.00 (kw)
Asking price	sold (VAT)	Lying	at sales office

CONTACT

Sales office	De Valk Loosdrecht B.V.	Telephone	+31 (0)35 582 90 30
Address	't Breukeleveense Meentje 6 1231LM Loosdrecht / Wijdmeren NL	E-mail	loosdrecht@devalk.nl

DISCLAIMER

These particulars are given in good faith as supplied but cannot be guaranteed.



GENERAL

Model	PRINCESS 60
Type	motor yacht
LOA (m)	18,07
Beam (m)	4,72
Draft (m)	1,19
Air draft (m)	5,21
Year built	1998
Builder	Princess Yachts
Country	Great Britain
Designer	Bernard Oleskinski
Displacement (t)	22,5
Hull material	GRP
Hull colour	off-white
Hull shape	deep-V
Superstructure material	GRP
Rubbing strake	stainless steel
Deck material	GRP
Deck finish	teak
Superstructure deck finish	non-skid paint
Window material	tempered glass
Portholes	aluminium
Flybridge	yes
Flybridge suncover	yes
Radar arch	non collapsible
Fuel tank (litre)	aluminium 2866 (2017 cleaned)
Level indicator (fuel tank)	New 2017
Freshwater tank (litre)	polyethylene 680 (2017)
Level indicator (freshwater)	yes
Blackwater tank (litre)	polyethylene 177
Level indicator (blackwater)	yes



Wheel steering	hydraulic
Inside helm position	yes
Flybridge helm position	hydraulic

ACCOMMODATION

Cabins	3
Berths	6
Crew cabin	yes
Crew berths	2
Floor	carpet
Saloon	yes
Headroom saloon (m)	yes
Heating	yes
Air-conditioning	reverse cycle airco Cruiseair (all cabins and saloon)
Dinette	yes
Opening door to cockpit	Starboard
Sliding door to aft deck	yes
Galley	yes
Countertop	corian
Sink	stainless steel 2x
Cooker	ceramic 4 burner
Extractor	yes
Microwave/oven combi	Panasonic Dimension 4
Fridge	3x (flybridge 2017)
Freezer	yes
Hot water system	220V + engine
Water pressure system	electrical
Dishwasher	yes
Coffee maker	Magimix Nespresso
Owners cabin	French bed
Wardrobe	hanging and shelves



Bathroom	en suite
Toilet	en suite
Toilet system	electric
Wash basin	in the bathroom
Shower	en suite
Guest cabin 1	twin single
Wardrobe	hanging and shelves
Bathroom	shared
Toilet	shared
Toilet system	electric
Wash basin	in the bathroom
Shower	shared
Guest cabin 2	double bed
Wardrobe	hanging and shelves
Bathroom	shared
Toilet	shared
Toilet system	electric
Wash basin	in the bathroom
Shower	shared
Crew cabin(s)	yes
Bathroom (crew)	yes
Toilet (crew)	yes
Wash basin	yes
Shower (crew)	yes
Extra info	new carpet, curtains, mattresses, leather upholstery etc. 2012 new interior
Washing machine/dryer combi	Neff
Ironing facilities	yes
Flybridge	yes

MACHINERY



PRINCESS 60

No of engines	2
Make	MAN
Type	D2842 LE402
HP	800,00
kW	588,00
Fuel	diesel
Year installed	1998
Maximum speed (kn)	30
Cruising speed (kn)	25
Engine hours	1750
Engine cooling system	freshwater heat exchanger
Drive	shaft
Bowthruster	yes
Sternthruster	yes
Shaft lubrication	water
Generator	12 kw Whisperpower (new 2011). (150Hrs)
Running hours generator	696 (20-10-2017)
Batteries	4 normal, 6 Gel type new 2013
Battery charger	3,5 kw Whisperpower new 2013
Inverter	3,5 kw Whisperpower new 2013
Shorepower	with cable
Extra info	2x recycled engine room fans

NAVIGATION

Compass	Plastimo Offshore 105
Compass on flybridge	Plastimo Offshore 105
Depth sounder/log	Autohelm
Log	Raymarine
Windset	Raymarine
VHF	2x Shipmate RS 8300
Autopilot	yes



Radar	Furuno
Plotter	Raymarine C120 and C 90 (C90 installed 2012)
Personal computer	Yachtcontroll incl Win GPS pro
Searchlight	yes

EQUIPMENT

Bimini	yes
Cockpit cushions	yes
Cockpit table	yes
Cockpit chairs	yes
Bathing platform	yes
Boarding ladder	yes
Gangway	Cooney Hydraulic
Deck shower	yes
Anchor	2x
Anchor chain	80 mtrs
Windlass	electrical With remote control
Deck wash	yes
Dinghy	Valiant D-340
Outboard	Mariner 9.9 hp, 4-stroke
Sea railing	stainless steel
Grab rail (superstructure)	stainless steel
Wiper	yes
Horn	electric
Fenders	yes
Mooring lines	yes
TV	Philips
Radio-cd player	3x
Speakers in salon	yes
Speakers in cabin	yes



PRINCESS 60



PRINCESS 60



PRINCESS 60



PRINCESS 60



PRINCESS 60



PRINCESS 60



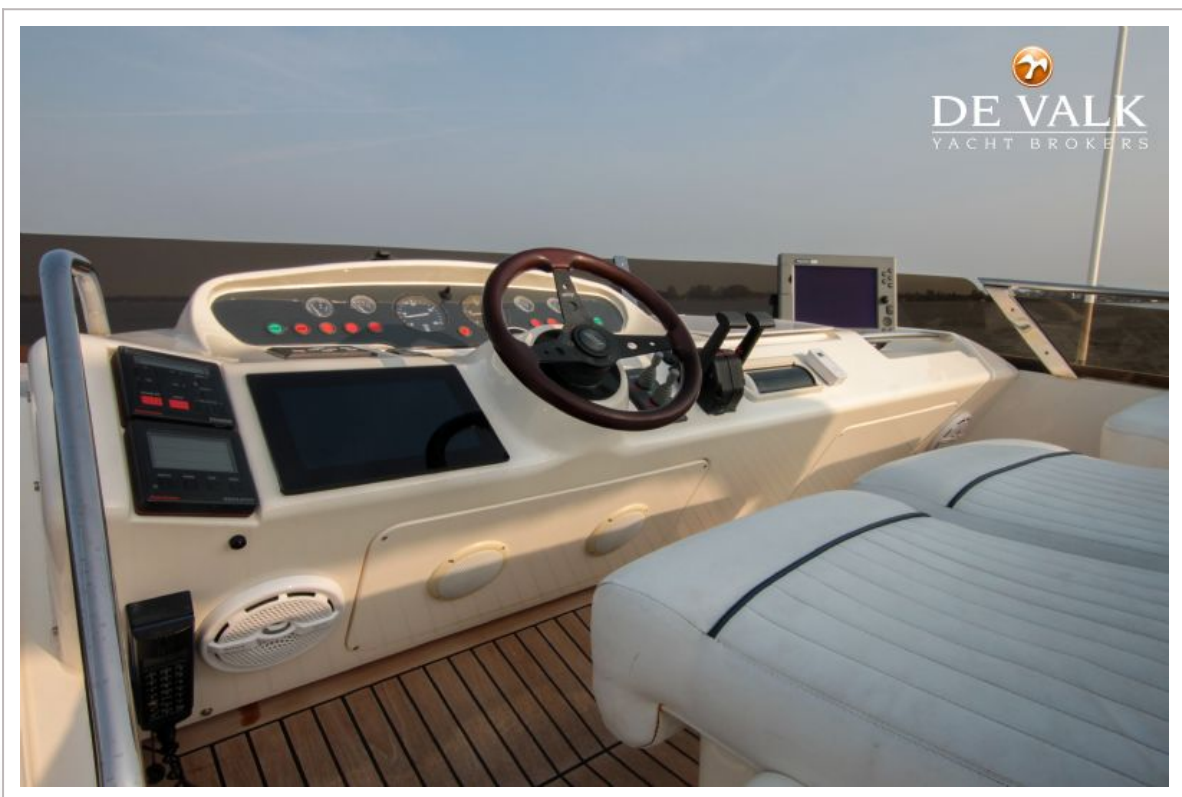
PRINCESS 60



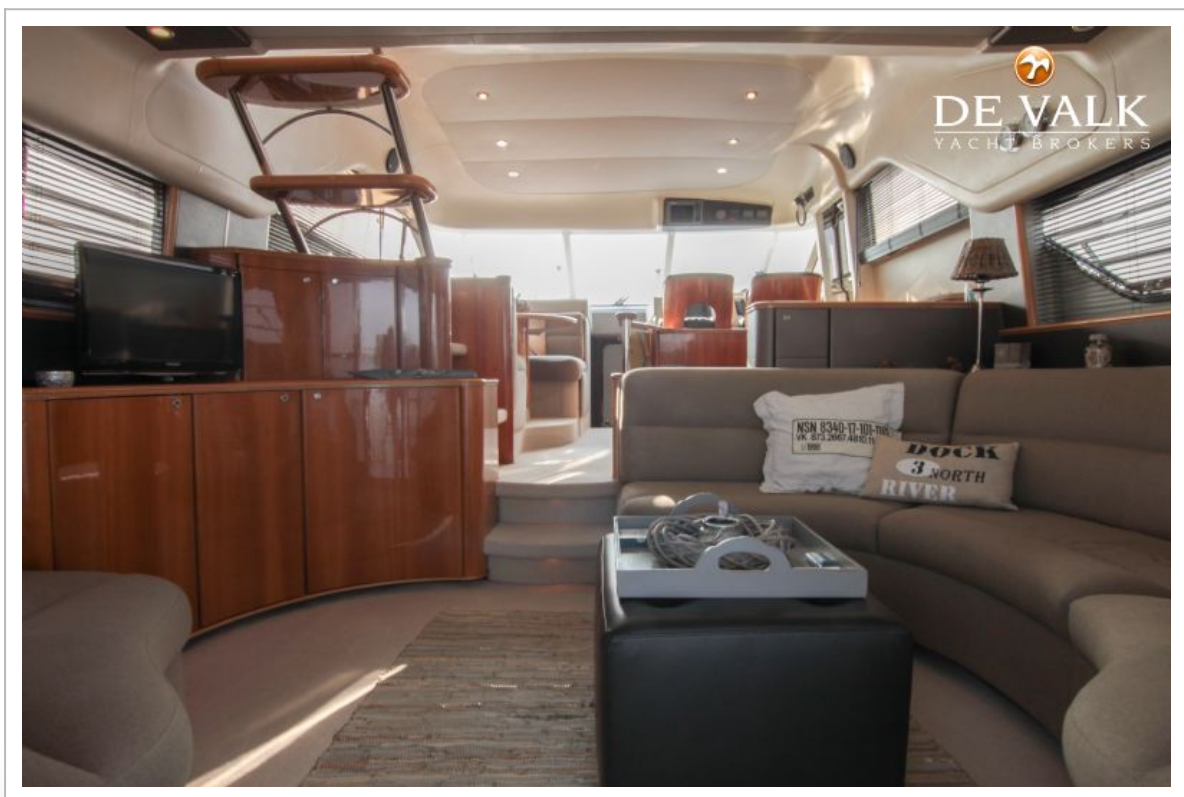
PRINCESS 60



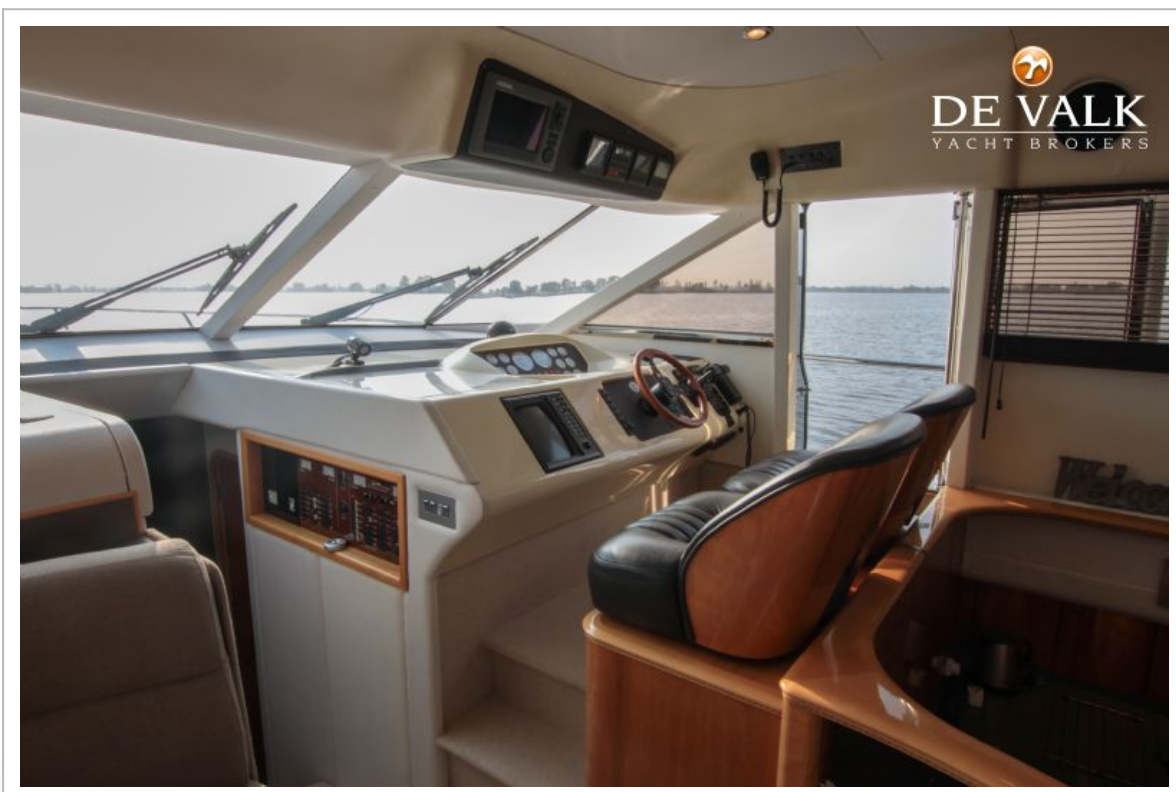
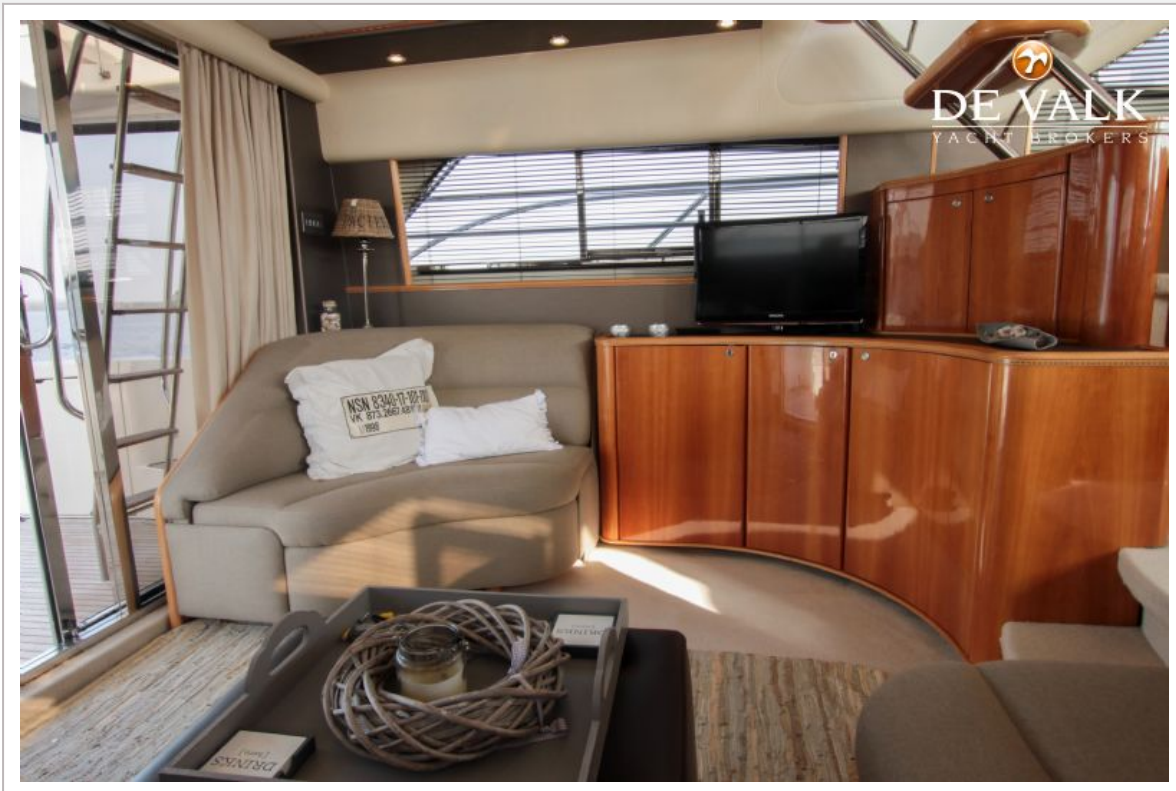
PRINCESS 60



PRINCESS 60



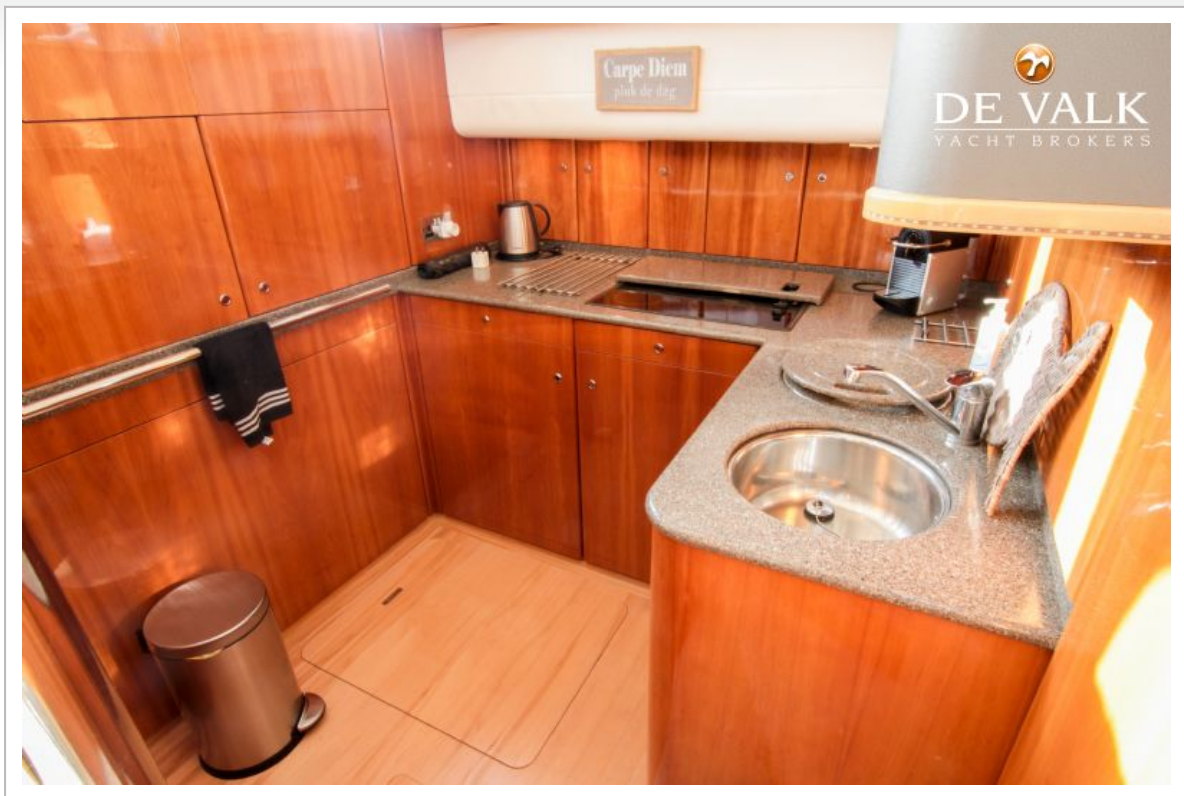
PRINCESS 60



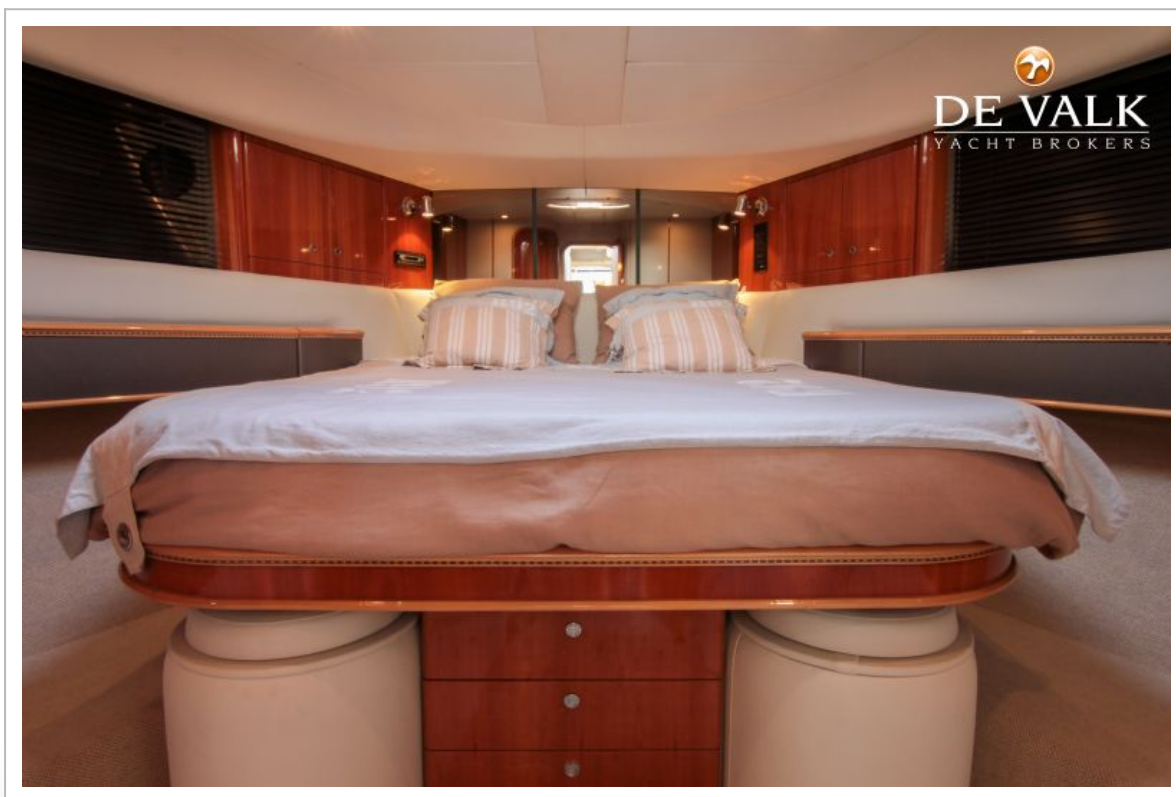
PRINCESS 60



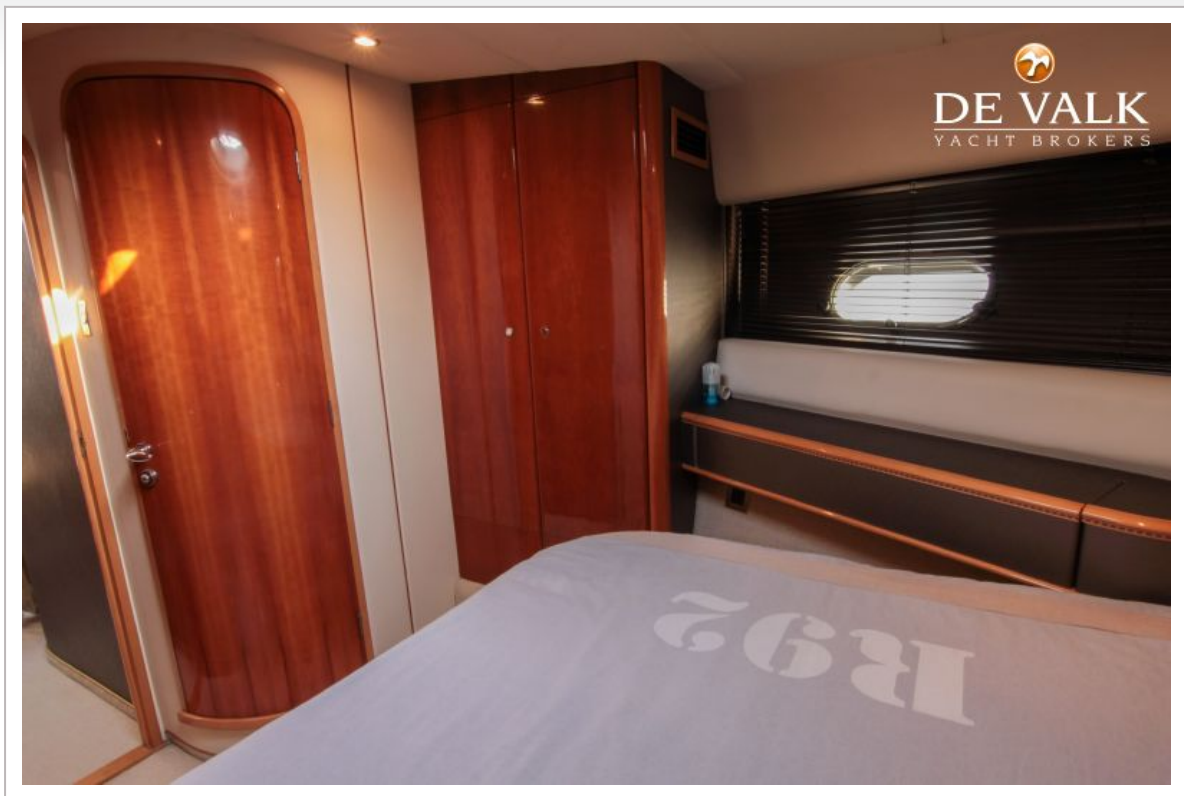
PRINCESS 60



PRINCESS 60



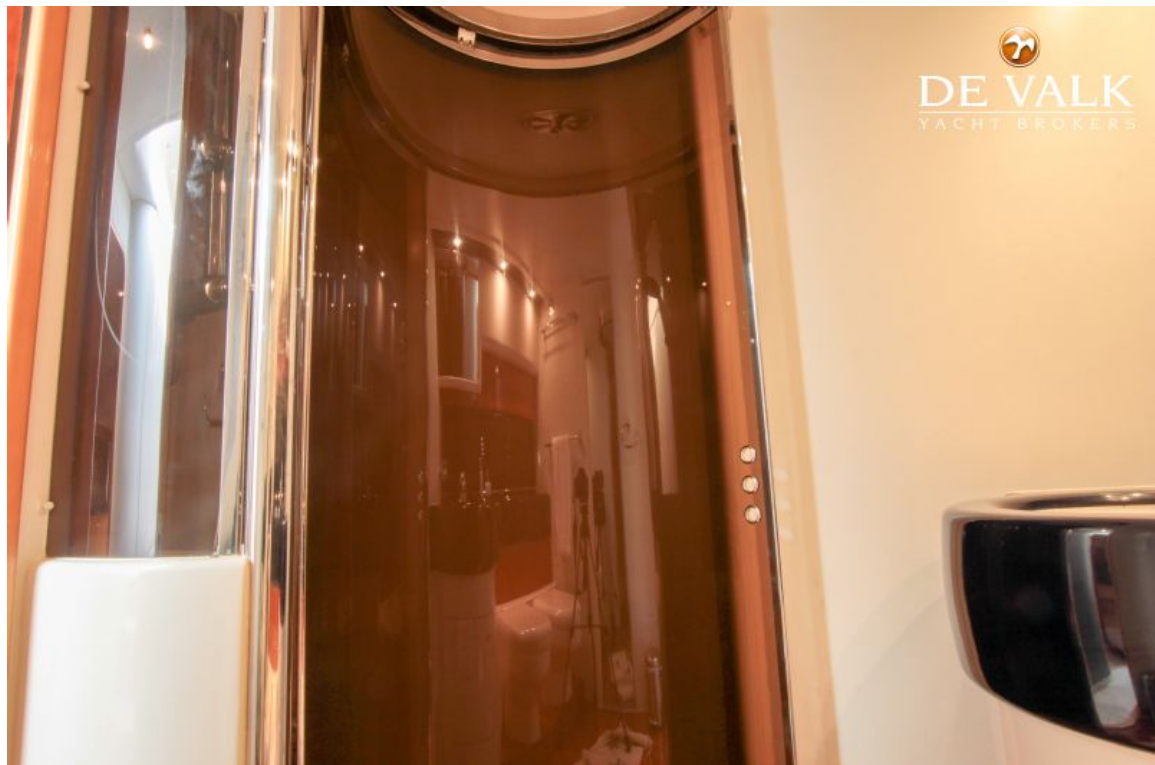
PRINCESS 60



PRINCESS 60



PRINCESS 60



PRINCESS 60

