



DE VALK  
YACHT BROKERS



ALMARINE 1430



DE VALK  
YACHT BROKERS

# ALMARINE 1430

## BROKER'S COMMENTS

Almarine 1430 is a spacious Dutch motor yacht, designed by Hans Alma. Hull and technology built by shipyard "De Treffer", the interior by "Van der Meijden". Very well equipped; strong engine, lots of hydraulics, good electricity facilities with a generator, double glazing and central heating. Ready to stay for a long time and make beautiful trips. Equipped with an open cockpit and a fly-bridge and still suitable for sailing the French canals. A smart interior design with many possibilities to stay both upstairs and downstairs. Well maintained by its first (current) owner.

*Ger Bayens*

## SPECIFICATIONS

|                     |                         |                |                                 |
|---------------------|-------------------------|----------------|---------------------------------|
| <b>Dimensions</b>   | 14.30 x 4.80 x 1.20 (m) | <b>Builder</b> | Jachtwerf De Treffer            |
| <b>Built</b>        | 2008                    | <b>Cabins</b>  | 2                               |
| <b>Material</b>     | Steel                   | <b>Berths</b>  | 5                               |
| <b>Engine(s)</b>    | 1 x Iveco NEF280 diesel | <b>Hp/Kw</b>   | 280.00 (hp), 205.80 (kw)        |
| <b>Asking price</b> | sold (VAT )             | <b>Lying</b>   | elsewhere / Not at sales office |

## CONTACT

|                     |  |                  |                      |
|---------------------|--|------------------|----------------------|
| <b>Sales office</b> | De Valk Thuishaven                     | <b>Telephone</b> | +31 35 5829042       |
| <b>Address</b>      | Peperstraat 7<br>1411 PX Naarden<br>NL | <b>E-mail</b>    | thuishaven@devalk.nl |

## DISCLAIMER

These particulars are given in good faith as supplied but cannot be guaranteed.



# ALMARINE 1430

## GENERAL

|                                   |                      |
|-----------------------------------|----------------------|
| <b>Model</b>                      | ALMARINE 1430        |
| <b>Type</b>                       | motor yacht          |
| <b>LOA (m)</b>                    | 14,30                |
| <b>Beam (m)</b>                   | 4,80                 |
| <b>Draft (m)</b>                  | 1,20                 |
| <b>Air draft (m)</b>              | 3,65                 |
| <b>Air draft min (m)</b>          | 3,25                 |
| <b>Headroom (m)</b>               | 1,97                 |
| <b>Year built</b>                 | 2008                 |
| <b>Builder</b>                    | Jachtwerf De Treffer |
| <b>Country</b>                    | The Netherlands      |
| <b>Designer</b>                   | Hans Alma            |
| <b>Displacement (t)</b>           | 22                   |
| <b>CE norm</b>                    | C                    |
| <b>Hull material</b>              | steel                |
| <b>Hull colour</b>                | yellow               |
| <b>Hull thickness (mm)</b>        | 6                    |
| <b>Hull shape</b>                 | multi hard chine     |
| <b>Superstructure material</b>    | steel                |
| <b>Superstructure (mm)</b>        | 4                    |
| <b>Deck plate thickness (mm)</b>  | 4                    |
| <b>Deck material</b>              | steel                |
| <b>Deck finish</b>                | non-skid paint       |
| <b>Superstructure deck finish</b> | non-skid paint       |
| <b>Cockpit deck finish</b>        | teak                 |
| <b>Antifouling (year)</b>         | 2021 (May)           |
| <b>Dorades</b>                    | flat                 |
| <b>Window frame</b>               | aluminium            |
| <b>Window material</b>            | double glazing       |
| <b>Deckhatch</b>                  | yes                  |



# ALMARINE 1430

|                                     |                           |
|-------------------------------------|---------------------------|
| <b>Portholes</b>                    | aluminium                 |
| <b>Insulation</b>                   | foam                      |
| <b>Flybridge</b>                    | yes                       |
| <b>Flybridge cockpit cover</b>      | + covers over seats       |
| <b>Flybridge suncover</b>           | yes                       |
| <b>Radar arch</b>                   | collapsible Aluminium     |
| <b>Fuel tank (litre)</b>            | steel 2x 500              |
| <b>Level indicator (fuel tank)</b>  | yes                       |
| <b>Freshwater tank (litre)</b>      | polyethylene 1x 1000      |
| <b>Level indicator (freshwater)</b> | yes                       |
| <b>Blackwater tank (litre)</b>      | polyethylene 250          |
| <b>Level indicator (blackwater)</b> | yes                       |
| <b>Blackwater tank extraction</b>   | deck extraction + uw line |
| <b>Wheel steering</b>               | hydraulic                 |
| <b>Flybridge helm position</b>      | hydraulic                 |
| <b>Emergency tiller</b>             | yes                       |
| <b>More info on paintwork</b>       | DD De IJssel (2016)       |

## ACCOMMODATION

|                                      |   |
|--------------------------------------|---|
| <b>Cabins</b>                        | 2   |
| <b>Berths</b>                        | 5   |
| <b>Interior</b>                      | teak Van der Meijden                                    |
| <b>Layout</b>                        | 2 cabins, bathroom with separate shower, galley, saloon |
| <b>Floor</b>                         | teak and holly  |
| <b>Open cockpit</b>                  | yes   |
| <b>Aft deck</b>                      | yes   |
| <b>Pilot house/deck saloon</b>       | yes   |
| <b>Headroom saloon (m)</b>           | 1,97  |
| <b>Heating</b>                       | central heating Kabola                                  |
| <b>Dinette</b>                       | yes   |
| <b>Dinette to convert into berth</b> | 1,85 x 1,10   |



# ALMARINE 1430

|                         |                            |
|-------------------------|----------------------------|
| Opening door to cockpit | retractable mosquito doors |
| Galley                  | yes                        |
| Countertop              | corian                     |
| Sink                    | GRP                        |
| Cooker                  | electric SIEMENS 4-flame   |
| Microwave/oven combi    | ATAG                       |
| Fridge                  | Isotherm (2018)            |
| Freezer                 | Isotherm (2018)            |
| Hot water system        | 220V + engine              |
| Water pressure system   | electrical                 |
| Owners cabin            | French bed                 |
| Bed length (m)          | 2,00 x 1,65                |
| Wardrobe                | drawers and shelves        |
| Bathroom                | shared                     |
| Toilet                  | shared                     |
| Toilet system           | electric                   |
| Wash basin              | in the bathroom            |
| Shower                  | shared                     |
| Guest cabin 1           | double bed                 |
| Bed length (m)          | 2,00 x 1,40                |
| Wardrobe                | shelves                    |
| Bathroom                | shared                     |
| Toilet                  | shared                     |
| Toilet system           | electric                   |
| Wash basin              | in the bathroom            |
| Shower                  | shared                     |
| Washing machine         | Candy 6KG                  |

## MACHINERY

|               |       |
|---------------|-------|
| No of engines | 1     |
| Make          | Iveco |



# ALMARINE 1430

|                          |  |
|--------------------------|--|
| Type                     | NEF280   |
| HP                       | 280  |
| kW                       | 205,80   |
| Fuel                     | diesel   |
| Year installed           | 2008   |
| Maximum speed (kn)       | 10,5   |
| Cruising speed (kn)      | 8  |
| Consumption (l/hr)       | 8  |
| Engine hours             | 2352   |
| Engine cooling system    | hopper cooling                                 |
| Drive                    | shaft  |
| Engine controls          | electrical EMC                                 |
| Gearbox                  | hydraulic Twindisc                             |
| Bowthruster              | hydraulic                                      |
| Sternthruster            | hydraulic                                      |
| Thrust bearing           | Python   |
| Propeller type           | fixed Professional dynamically balanced (2020) |
| Propeller blades         | 4x   |
| Propeller shaft material | stainless steel                                |
| Shaft lubrication        | water  |
| Electric bilge pump      | yes  |
| Electrical installation  | 230/24/12V                                     |
| Generator                | dry exhaust Lombardini VTE 6,5 KVA             |
| Running hours generator  | 1090   |
| Start battery            | 2x   |
| Service battery          | 4x Victron 240 Ah (2017)                       |
| Generator battery        | 1  |
| Battery monitor          | Mastervolt BTM III / AC Inverter control       |
| Battery charger/inverter | Mastervolt                                     |
| Diode battery combiners  | 2x Mastervolt                                  |
| Shorepower               | with cable                                     |
| Insulation transformer   | yes  |



## NAVIGATION

|                        |                       |
|------------------------|-----------------------|
| Depth sounder/log      | Vetus                 |
| Repeater               | Log/depht at FB Vetus |
| VHF handheld           | ICOM                  |
| Rudder angle indicator | not working           |

## EQUIPMENT

|                            |  |
|----------------------------|--|
| Fixed windscreen           | yes                                      |
| Cockpit cover              | with muskeeto screens (2016)             |
| Bimini                     | at fly bridge                            |
| Cockpit cushions           | yes                                      |
| Cockpit table              | yes                                      |
| Cockpit chairs             | yes                                      |
| Bathing platform           | yes                                      |
| Boarding ladder            | stainless steel                          |
| Transom door               | yes                                      |
| Deck shower                | H & C                                    |
| Anchor                     | Klip stainless steel/RVS                 |
| Anchor chain               | yes                                      |
| Anchor 2                   | Klip                                     |
| Windlass                   | hydraulic                                |
| Capstan                    | yes                                      |
| Windlass aft               | hydraulic                                |
| Dinghy                     | rigid inflatable Lomac Jetz Marivent 250 |
| Outboard                   | Yamaha 4-stroke/4HP                      |
| Davits                     | stainless steel                          |
| Davits controls            | manual                                   |
| Sea railing                | stainless steel                          |
| Railing side opening gates | + one side way ladder                    |
| Pushpit                    | yes                                      |
| Pulpit                     | yes                                      |



# ALMARINE 1430

|                                    |               |
|------------------------------------|---------------|
| <b>Wiper</b>                       | 3 speed       |
| <b>Horn</b>                        | electric      |
| <b>Fenders</b>                     | yes           |
| <b>Mooring lines</b>               | yes           |
| <b>TV</b>                          | yes           |
| <b>TV receiver</b>                 | Digitenne     |
| <b>Speakers in salon</b>           | not connected |
| <b>Clock - barometer</b>           | yes           |
| <b>Fire extinguisher</b>           | Flamark       |
| <b>Extinguisher in engine room</b> | Flamark       |





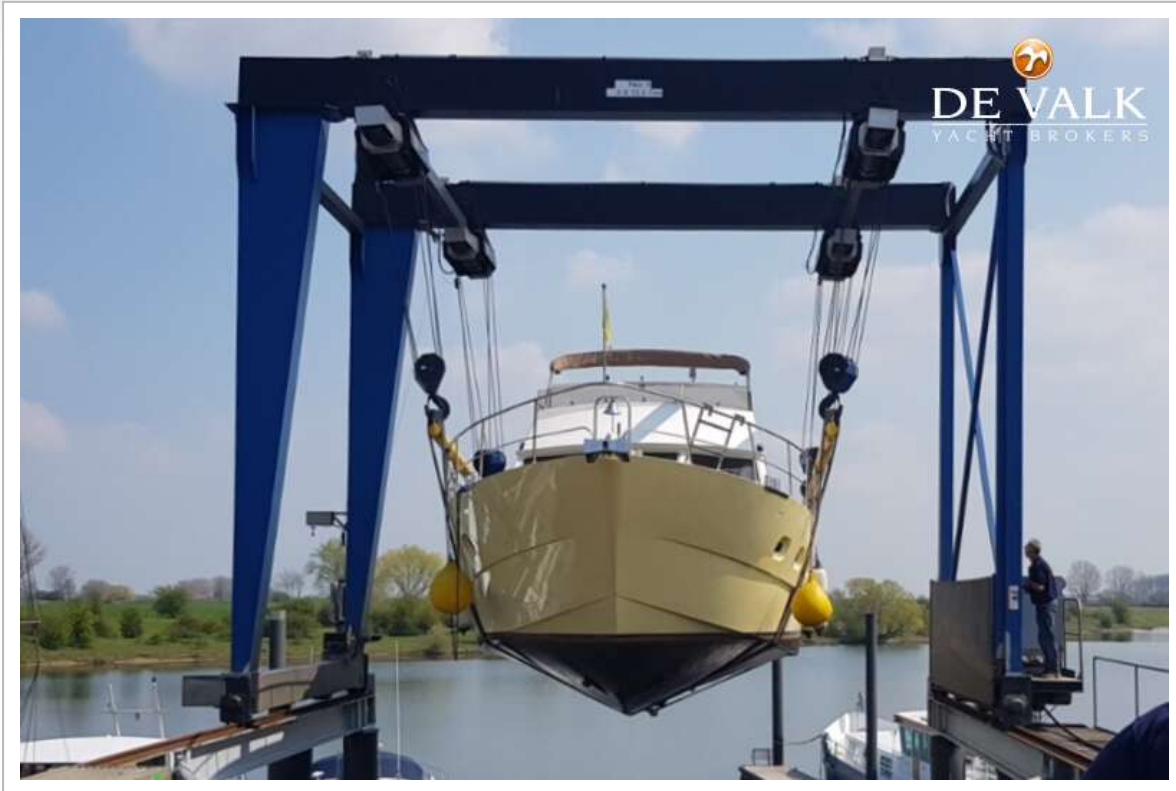
# ALMARINE 1430



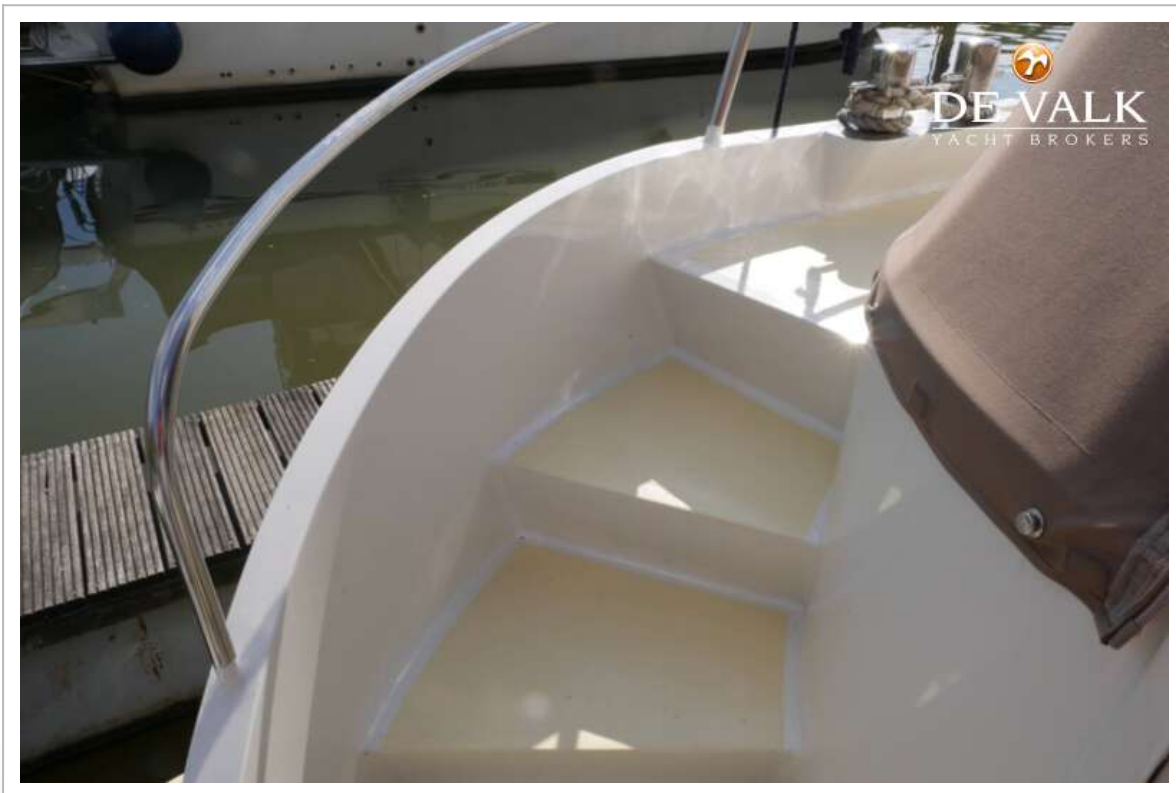
# ALMARINE 1430



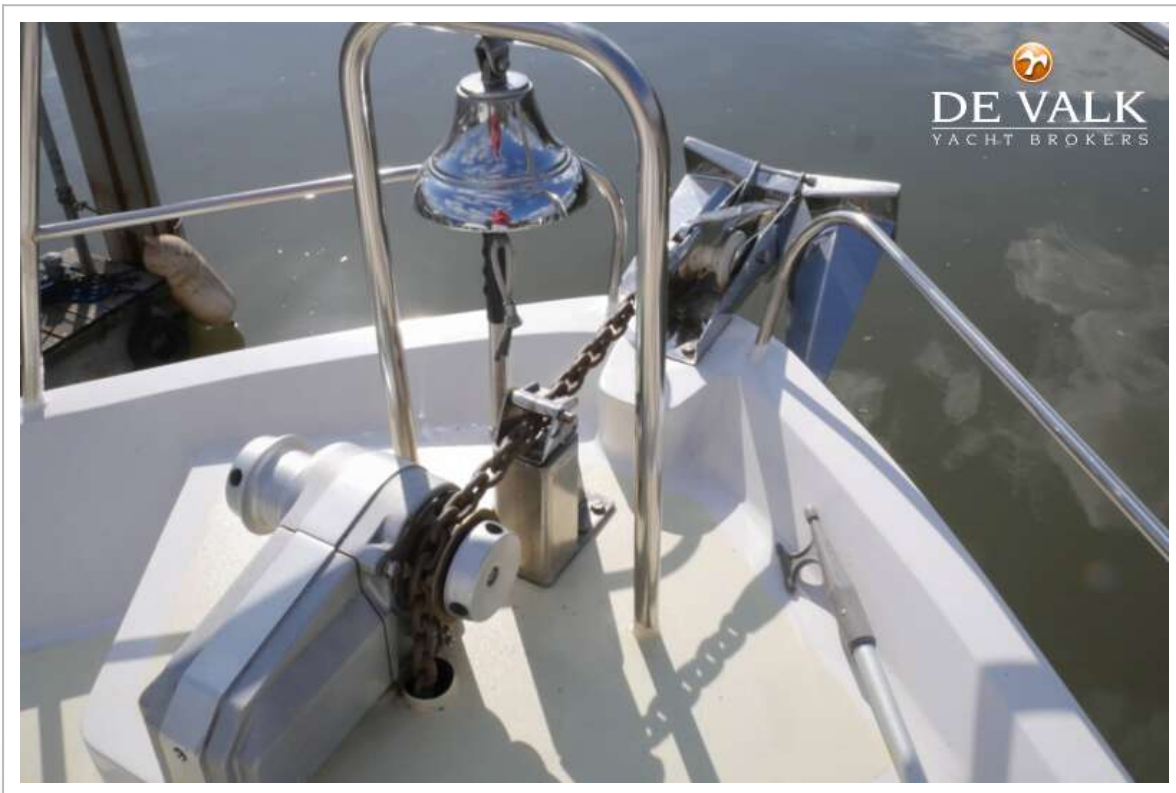
# ALMARINE 1430



# ALMARINE 1430



# ALMARINE 1430



# ALMARINE 1430



# ALMARINE 1430



# ALMARINE 1430





# ALMARINE 1430



# ALMARINE 1430



# ALMARINE 1430



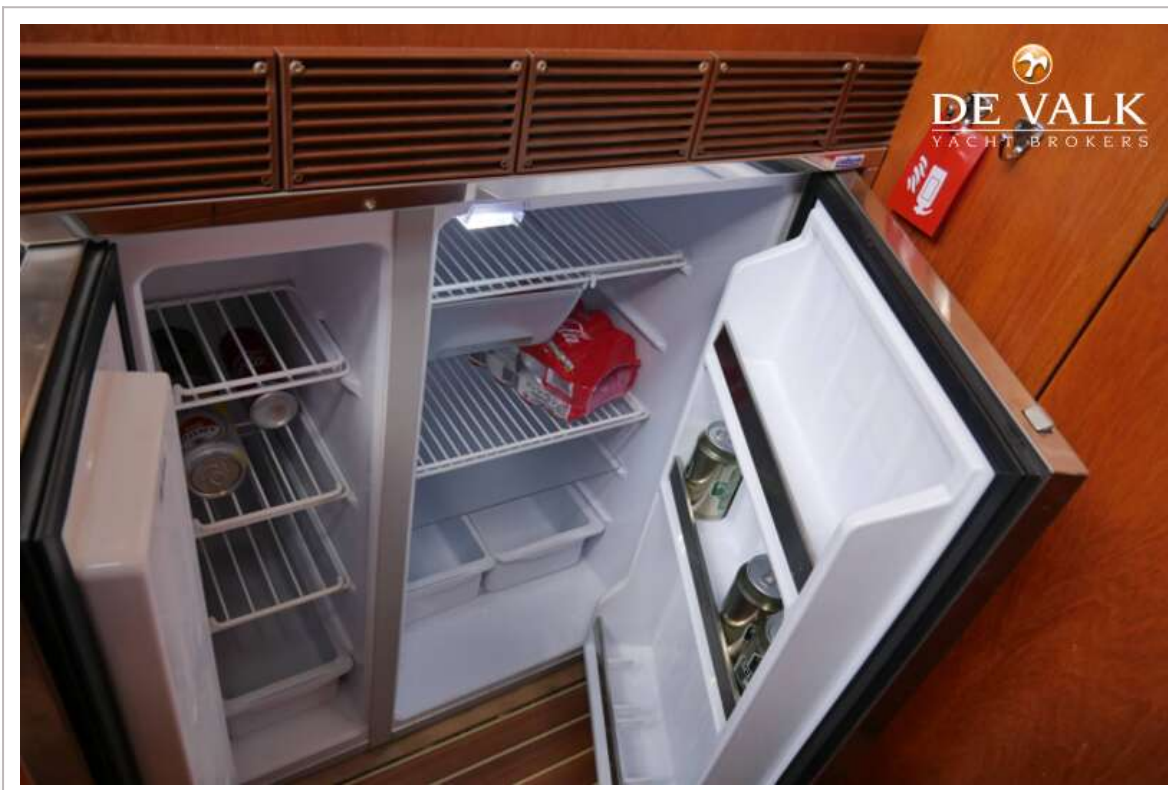
# ALMARINE 1430



# ALMARINE 1430



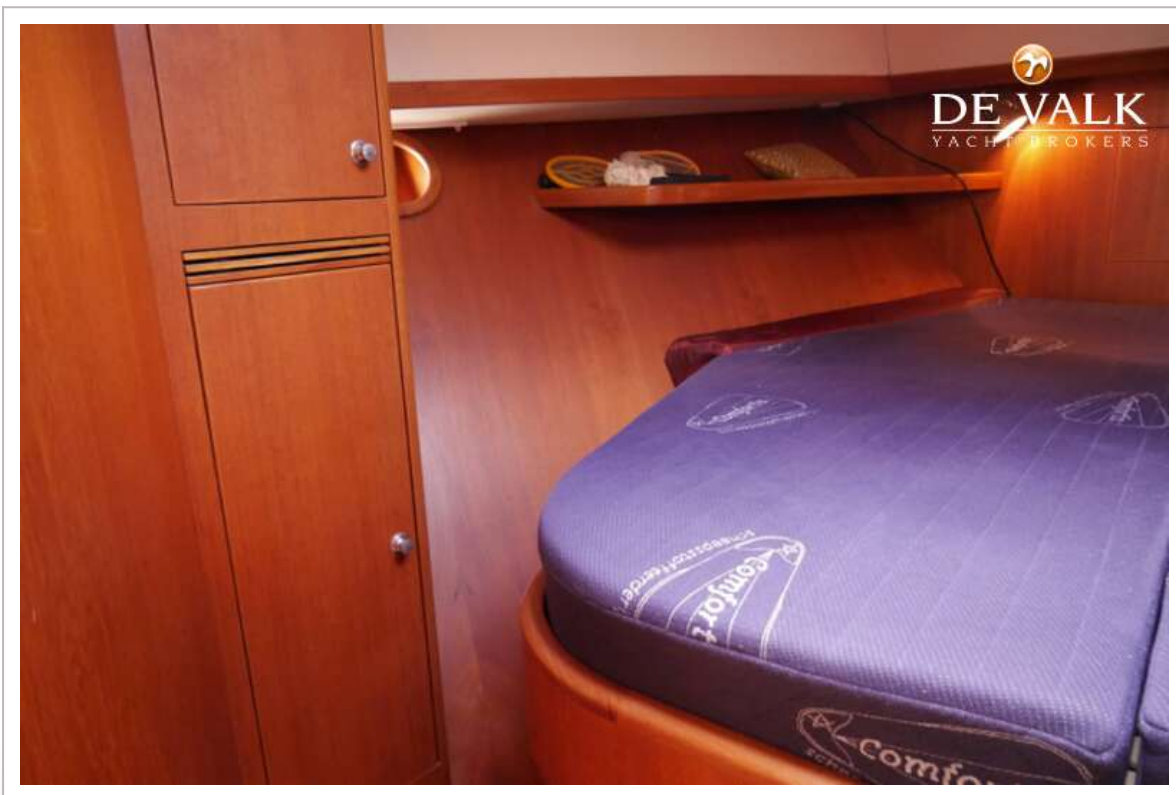
# ALMARINE 1430



# ALMARINE 1430

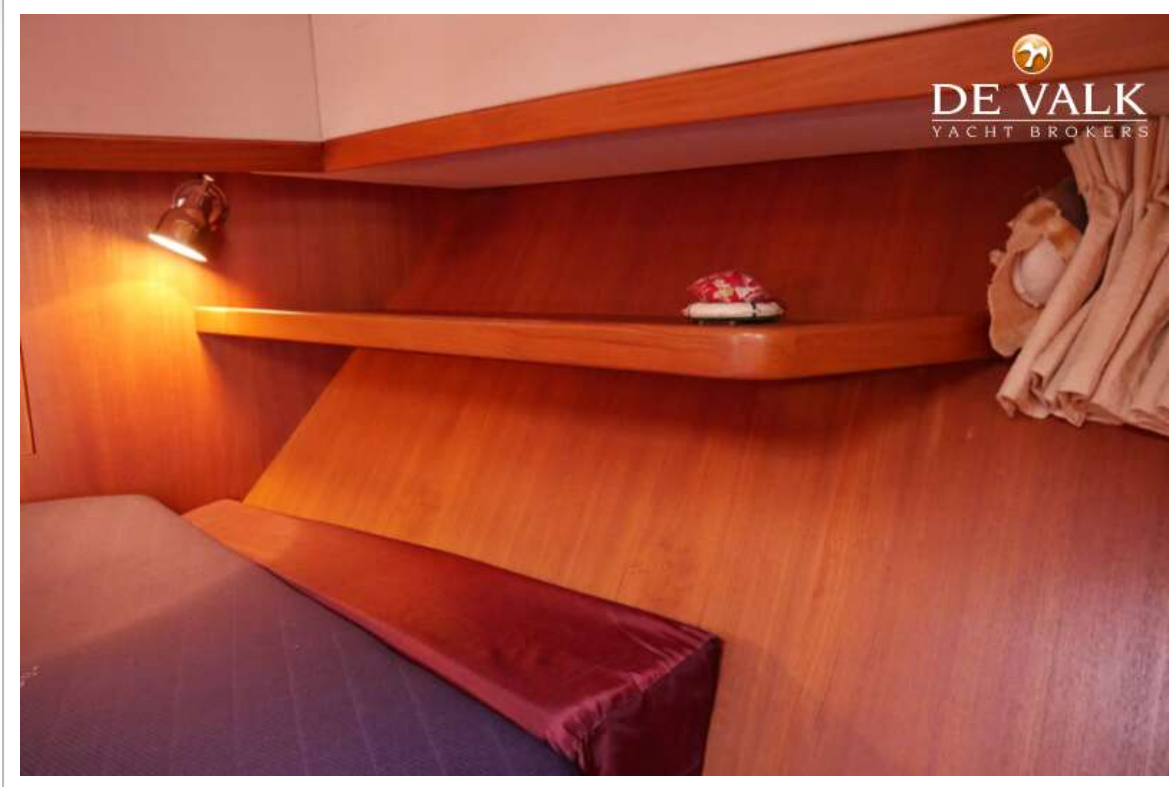


# ALMARINE 1430

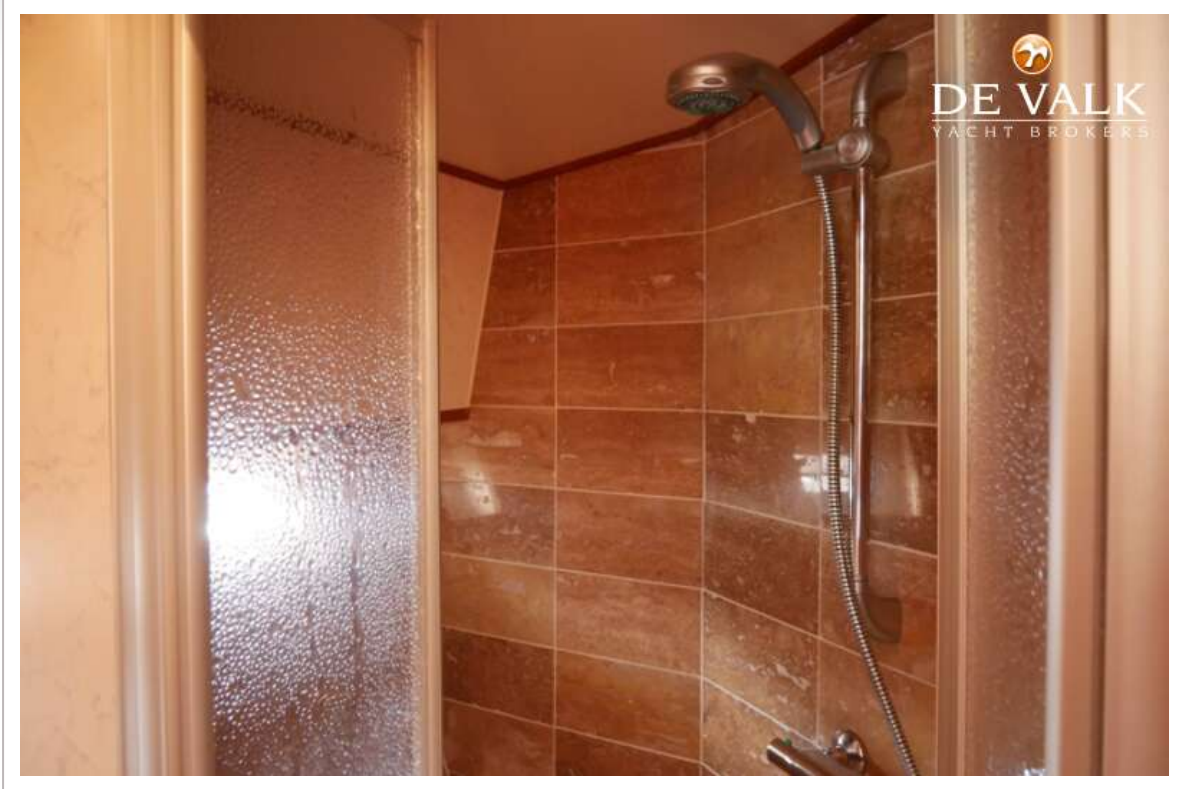




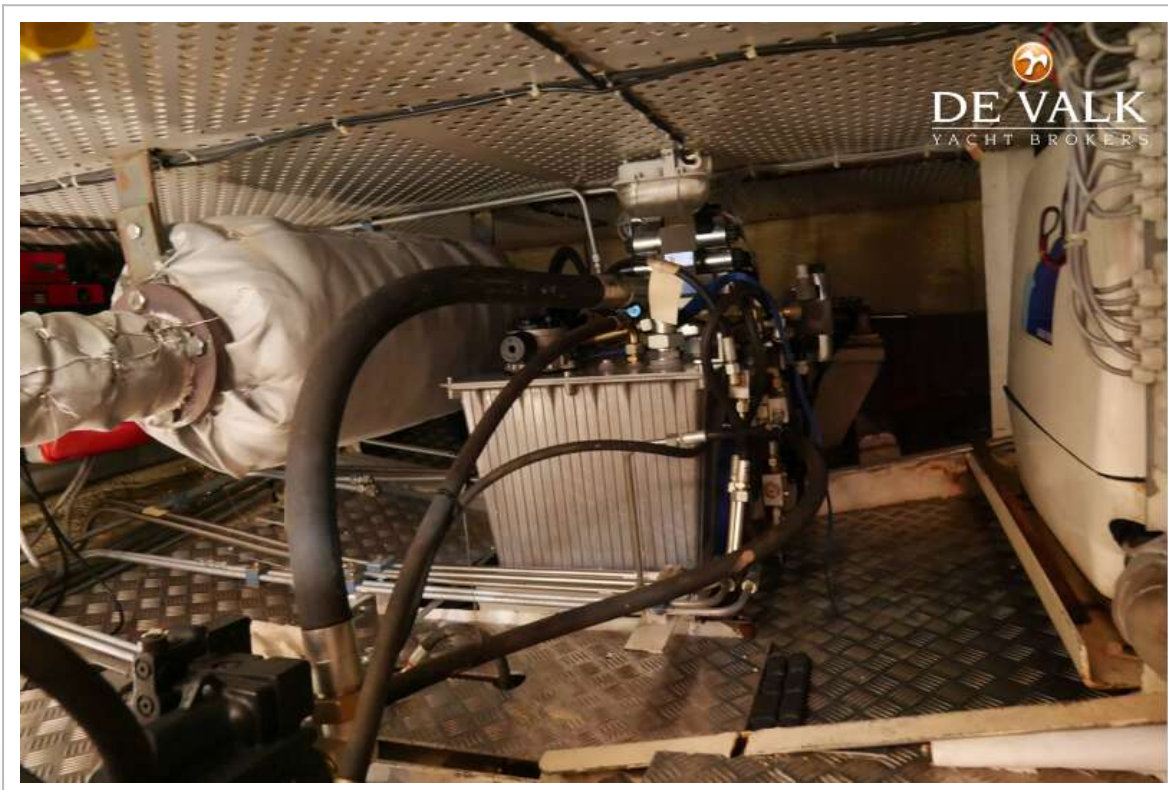
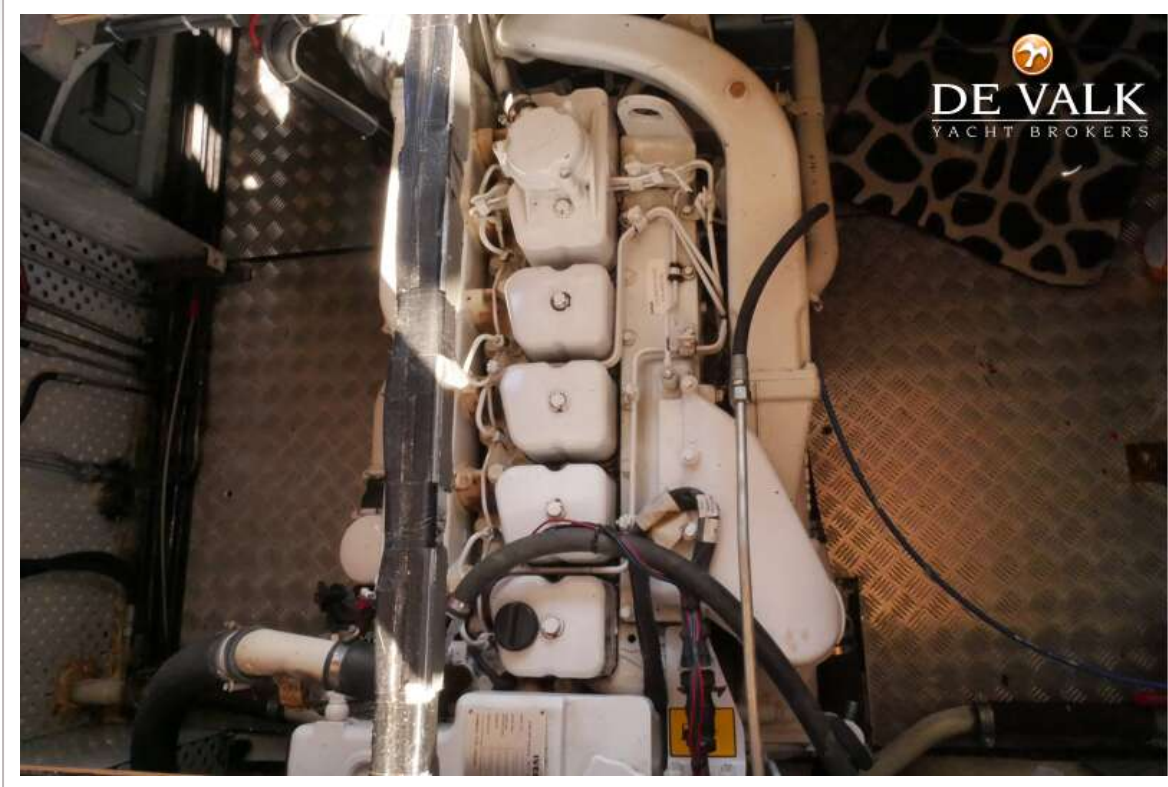
# ALMARINE 1430



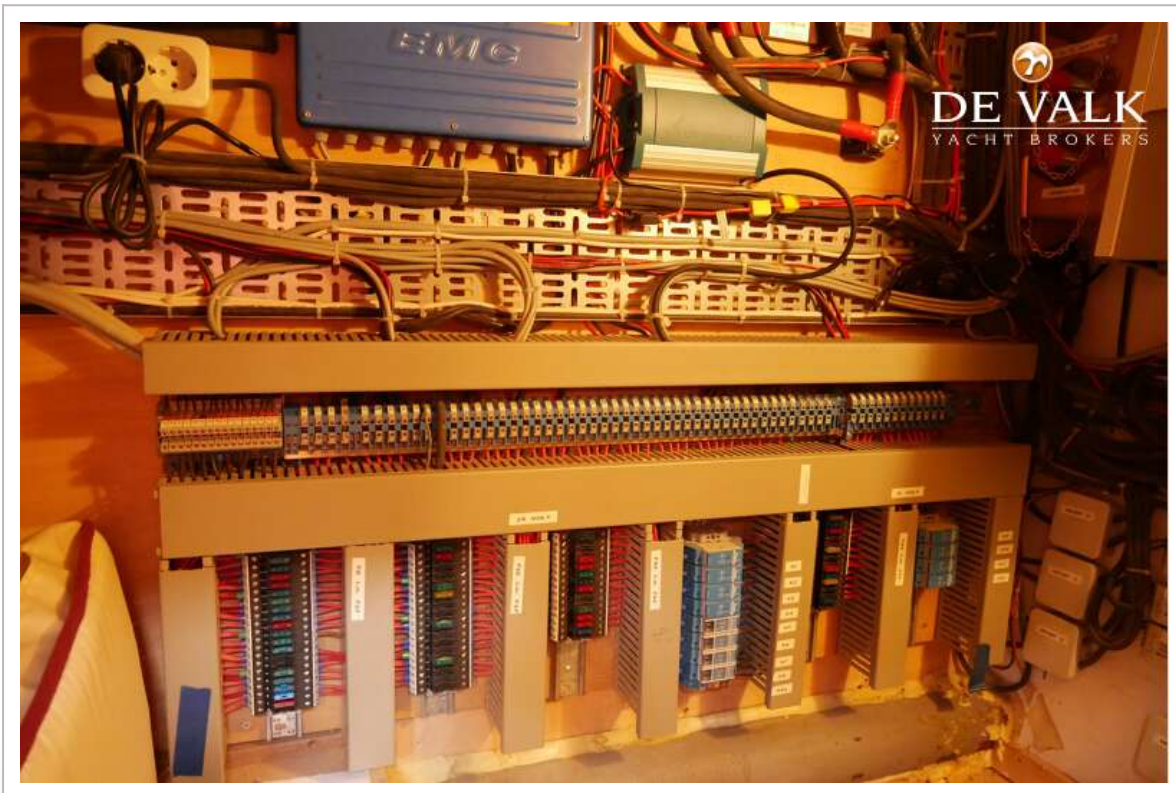
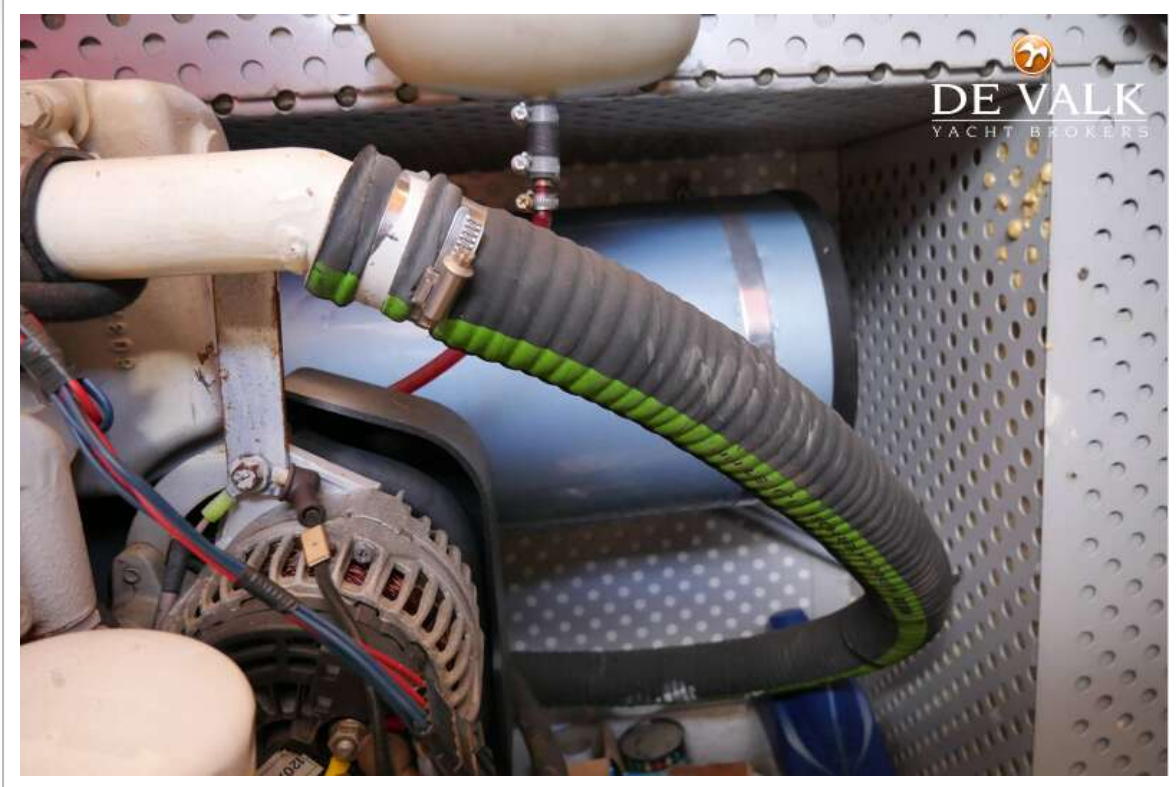
# ALMARINE 1430



# ALMARINE 1430



# ALMARINE 1430



# ALMARINE 1430

