



DE VALK
YACHT BROKERS



STEELER NG40



DE VALK
YACHT BROKERS

STEELER NG40

BROKER'S COMMENTS

The Steeler NG 40 is the school example of Dutch craftsmanship. It's gorgeous smooth lines and low air draft makes the NG 40 an elegant well-seen sight on the inland waters. Having the saloon and aft deck flush level, the living space is enormous when opening the aft doors. A large owners cabin, kitchen with dinette and separated bathrooms make sure staying aboard the Sven-Laurens is a pleasure. Visiting the Steeler NG 40 is possible on appointment in her Shiphouse in Lemmer, which is also for sale: <https://bit.ly/2vfWBGE>

Koen Mulder

SPECIFICATIONS

| | | | |
|---------------------|---------------------------|----------------|---------------------------------|
| Dimensions | 12.05 x 4.25 x 1.06 (m) | Builder | Steeler Yachts |
| Built | 2011 | Cabins | 3 |
| Material | Steel | Berths | 6 |
| Engine(s) | 1 x Steyr MO236K42 diesel | Hp/Kw | 236.00 (hp), 173.46 (kw) |
| Asking price | sold (VAT) | Lying | elsewhere / Not at sales office |

CONTACT

| | | | |
|---------------------|--|------------------|----------------------|
| Sales office | De Valk Loosdrecht | Telephone | +31 35 582 90 30 |
| Address | 't Breukeleveense Meentje 6 1231 LM Loosdrecht / Wijdmeren The Netherlands | E-mail | loosdrecht@devalk.nl |

DISCLAIMER

These particulars are given in good faith as supplied but cannot be guaranteed.



GENERAL

| | |
|-----------------------------------|-----------------------|
| Model | STEELER NG40 |
| Type | motor yacht |
| LOA (m) | 12,05 |
| Beam (m) | 4,25 |
| Draft (m) | 1,06 |
| Air draft min (m) | 2,70 |
| Headroom (m) | 2,00 |
| Year built | 2011 |
| Builder | Steeler Yachts |
| Country | The Netherlands |
| Designer | Martin Bekebrede |
| Displacement (t) | 15 |
| Ballast (tonnes) | punch caps +/- 200 KG |
| CE norm | B |
| Hull material | steel |
| Hull colour | brown Pale |
| Hull shape | deep-V |
| Superstructure material | steel |
| Rubbing strake | stainless steel |
| Deck material | steel |
| Deck finish | non-skid paint |
| Superstructure deck finish | paint |
| Cockpit deck finish | paint |
| Antifouling (year) | 2017 |
| Window frame | aluminium |
| Window material | glass |
| Portholes | aluminium |
| Insulation | airfoil Foam/ |
| Radar arch | collapsible |
| Mast can be lowered | manual |



| | |
|------------------------------|------------------------|
| Fuel tank (litre) | stainless steel 500 |
| Level indicator (fuel tank) | yes |
| Freshwater tank (litre) | stainless steel 2x 250 |
| Level indicator (freshwater) | yes |
| Blackwater tank (litre) | stainless steel 250 |
| Level indicator (blackwater) | yes |
| Blackwater tank extraction | deck extraction |
| Wheel steering | hydraulic |
| Inside helm position | yes |

ACCOMMODATION

| | |
|-------------------------|-------------------------------|
| Cabins | 3 |
| Berths | 6 |
| Interior | teak |
| Floor | teak and holly |
| Open cockpit | yes |
| Aft deck | yes |
| Pilot house | yes |
| Saloon | yes |
| Sliding roof | electric |
| Heating | diesel ducted hot air Webasto |
| Heating 2 | central heating |
| Dinette | yes |
| Opening door to cockpit | yes |
| Galley | yes |
| Countertop | corian |
| Sink | stainless steel |
| Cooker | calor gas 3 burner |
| Extractor | yes |
| Gas alarm | yes |
| Microwave | yes |



STEELER NG40

| | |
|-----------------------|-------------------------|
| Fridge | yes |
| Freezer | In fridge |
| Wine cooler | yes |
| Hot water system | 220V + engine |
| Water pressure system | electrical |
| Dishwasher | yes |
| Kettle | yes |
| Coffee maker | yes |
| Owners cabin | double bed |
| Bed length (m) | 2 |
| Wardrobe | hanging and drawers |
| Bathroom | separate |
| Toilet | separate |
| Toilet system | electric |
| Wash basin | in the bathroom |
| Shower | en suite |
| Guest cabin 1 | double bed |
| Bed length (m) | 2 |
| Wardrobe | hanging/drawers/shelves |
| Bathroom | separate |
| Toilet | separate |
| Toilet system | electric |
| Guest cabin 2 | double bed |
| Bed length (m) | 2 |
| Bathroom | separate |
| Toilet | separate |
| Toilet system | electric |

MACHINERY

| | |
|---------------|-------|
| No of engines | 1 |
| Make | Steyr |



STEELER NG40

| | |
|--------------------------|---------------------------|
| Type | MO236K42 |
| HP | 236 |
| kW | 173,46 |
| Fuel | diesel |
| Year installed | 2011 |
| Maximum speed (kn) | 9,5 |
| Cruising speed (kn) | 6,5 |
| Consumption (l/hr) | 10 |
| Range (nm) | 270 |
| Engine cooling system | freshwater heat exchanger |
| Drive | shaft |
| Engine controls | bowden cable |
| Gearbox | hydraulic |
| Bowthruster | electric 75 Kgf |
| Sternthruster | electric 95 Kgf |
| Propeller type | fixed |
| Propeller blades | 4 |
| Propeller shaft material | stainless steel |
| Shaft lubrication | water |
| Manual bilge pump | yes |
| Electric bilge pump | yes |
| Bowthruster battery | yes |
| Sternthruster battery | yes |
| Battery charger | yes |
| Inverter | yes |
| Diode battery combiners | yes |
| Shorepower | with cable |
| Insulation transformer | yes |

NAVIGATION

| | |
|---------|-----|
| Compass | yes |
|---------|-----|



| | |
|------------------------|-----|
| Depth sounder | yes |
| Log | yes |
| Fish finder | yes |
| VHF | yes |
| Rudder angle indicator | yes |
| GPS | yes |
| Plotter | yes |
| Electronis chart(s) | yes |
| AIS receiver | yes |
| Camera | yes |

EQUIPMENT

| | |
|----------------------------|----------------------|
| Fixed windscreen | yes |
| Bimini | yes |
| Sun awning | yes |
| Cockpit cushions | yes |
| Cockpit table | yes |
| Bathing platform | yes |
| Boarding ladder | stainless steel |
| Transom door | yes |
| Anchor | Pool Stainless steel |
| Sea railing | stainless steel |
| Grab rail (superstructure) | stainless steel |
| Railing side opening gates | yes |
| Wiper | 3x |
| Horn | electric |
| Radar reflector | yes |
| Fenders | yes |
| Mooring lines | yes |
| TV | 2x |
| Radio-cd player | yes |



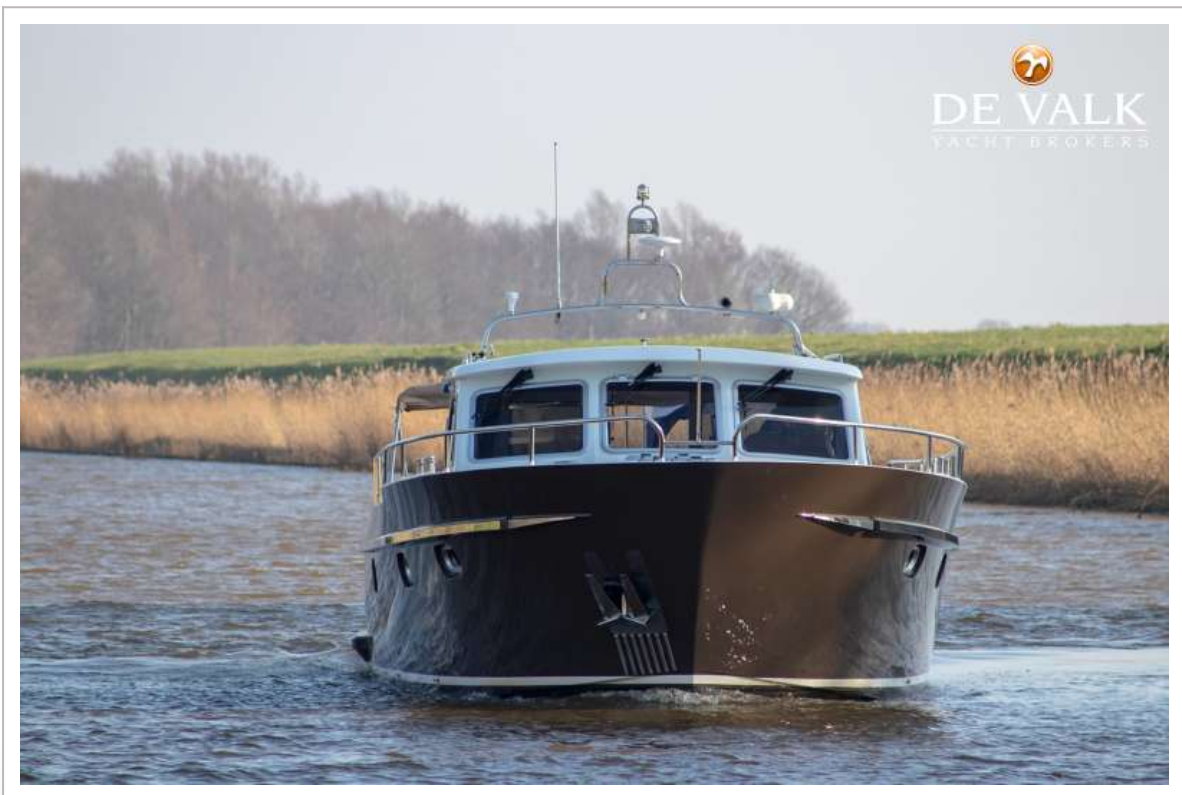
| | |
|--------------------------|-----|
| DVD player | yes |
| iPod connection | yes |
| Surround Sound System | yes |
| Sub-woofer | yes |
| Speakers in salon | yes |
| Clock - barometer | yes |
| Fire extinguisher | yes |
| Auto extinguisher system | yes |



STEELER NG40



STEELER NG40



STEELER NG40



STEELER NG40



STEELER NG40



STEELER NG40



STEELER NG40



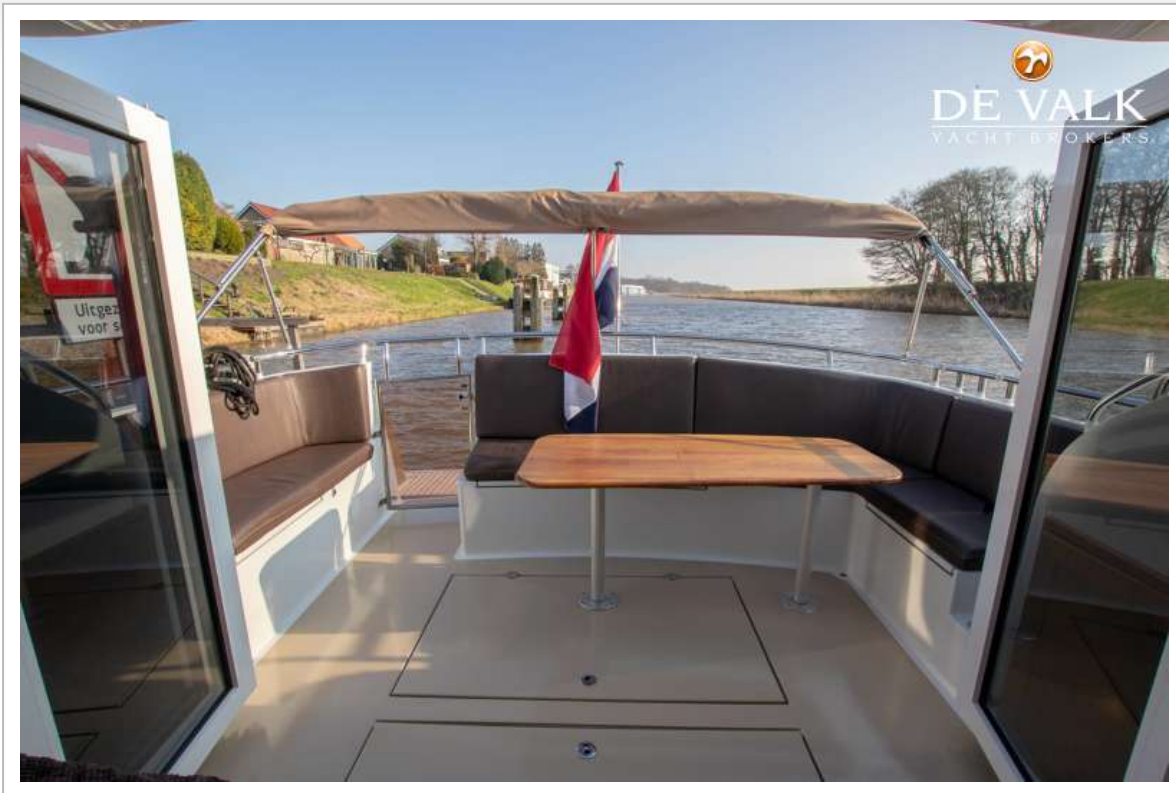
STEELER NG40



STEELER NG40



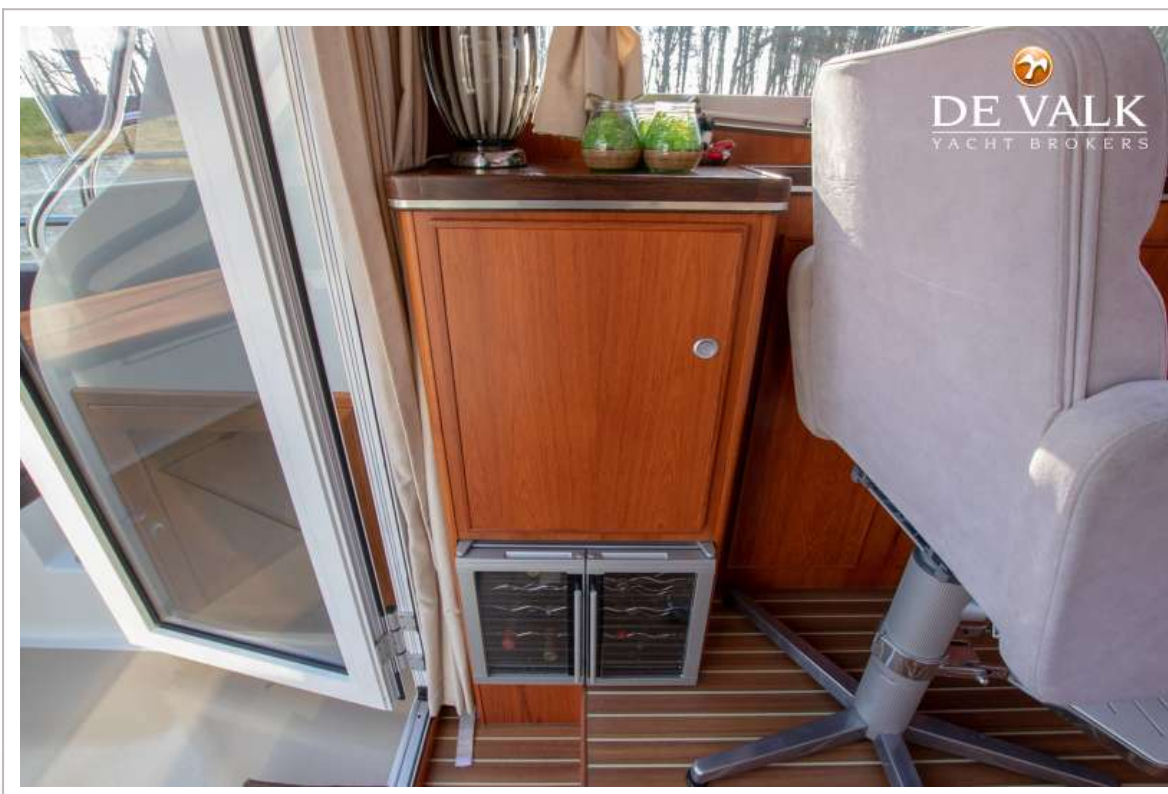
STEELER NG40



STEELER NG40



STEELER NG40



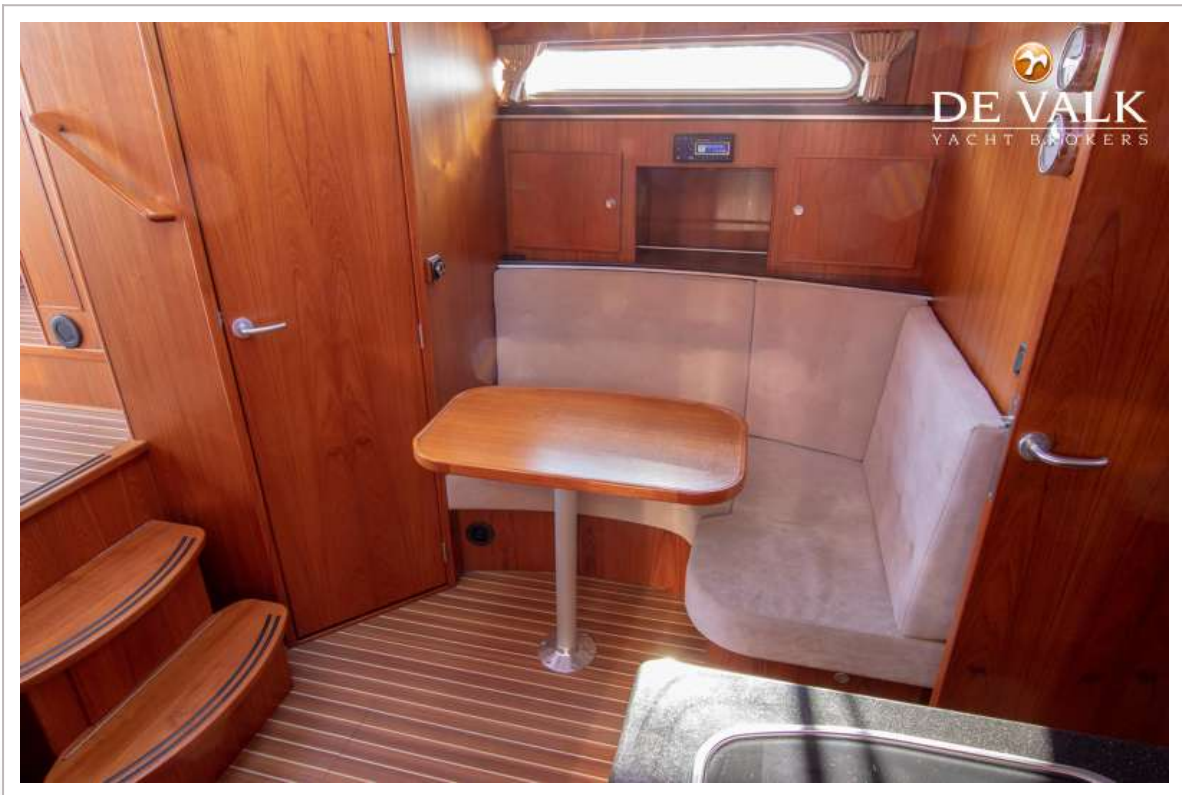
STEELER NG40



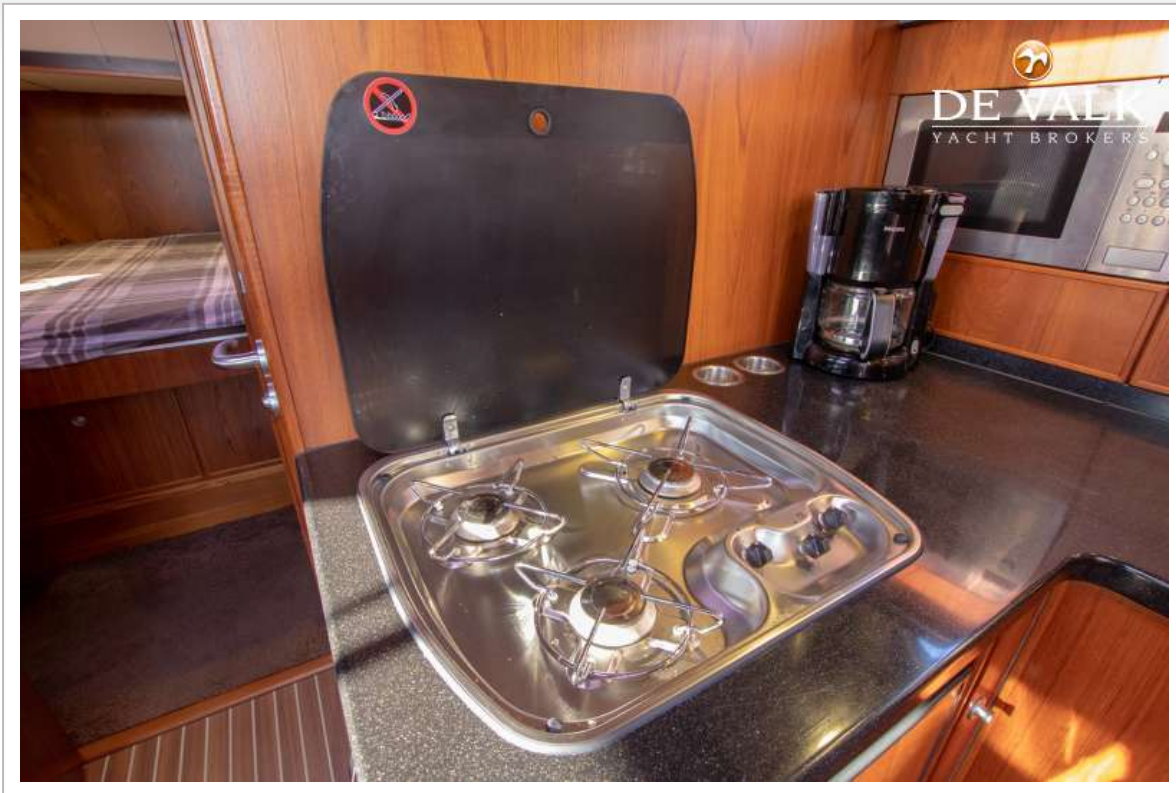
STEELER NG40



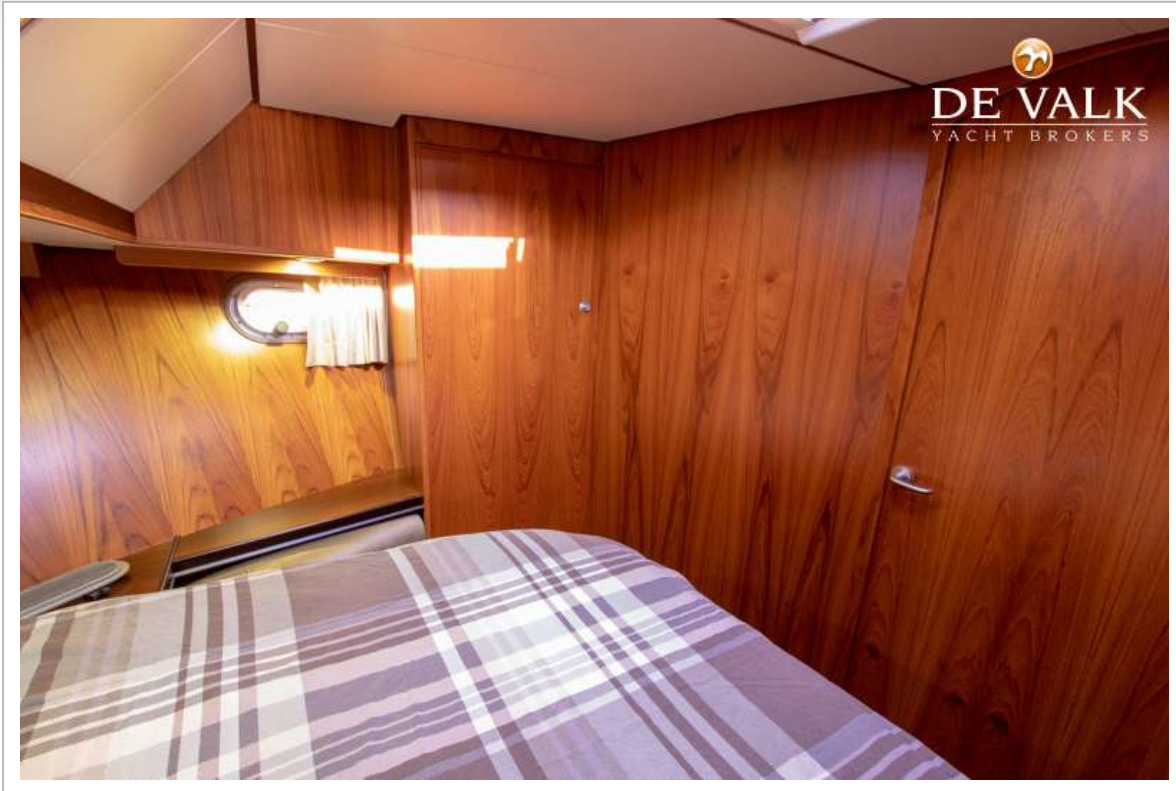
STEELER NG40



STEELER NG40



STEELER NG40



STEELER NG40



STEELER NG40



STEELER NG40



STEELER NG40

