



DELTA 33 OPEN

DELTA 33 OPEN

BROKER'S COMMENTS

The Delta 33 Open is the perfect day cruiser which enables you to stay on board with four persons. The hull was specially designed to be market-leading in low fuel consumption, 1.6-1.8 L/nm cruising at 30 knots. Built in 2015 with only 95 engine hours, the 'Sense' is offered in a marvellous condition by the first owner. The Delta 33 Open was on sweet water only!

Koen Mulder

SPECIFICATIONS

Dimensions	10.70 x 3.10 x 0.95 (m)	Builder	Luksusjaht as
Built	2015	Cabins	2
Material	GRP	Berths	4
Engine(s)	2 x Volvo Penta D3 diesel	Hp/Kw	2 x 220.00 (hp), 161.70 (kw)
Asking price	sold (VAT)	Lying	at sales office

CONTACT

Sales office	De Valk Loosdrecht B.V.	Telephone	+31 (0)35 582 90 30
Address	't Breukeleveense Meentje 6 1231LM Loosdrecht / Wijdmeren NL	E-mail	loosdrecht@devalk.nl

DISCLAIMER

These particulars are given in good faith as supplied but cannot be guaranteed.



GENERAL

Model	DELTA 33 OPEN
Type	motor yacht
LOA (m)	10,70
Beam (m)	3,10
Draft (m)	0,95
Air draft (m)	3,65
Year built	2015
Builder	Luksusjaht as
Country	Sweden
Designer	Ted Mannerfelt
Displacement (t)	6,5
CE norm	C
Hull material	GRP
Hull colour	off-white
Hull shape	deep-V
Superstructure material	GRP
Deck material	GRP
Deck finish	teak
Superstructure deck finish	teak
Cockpit deck finish	teak
Window frame	stainless steel
Window material	perspex
Deckhatch	yes
Fuel tank (litre)	550L
Level indicator (fuel tank)	yes
Freshwater tank (litre)	yes
Blackwater tank (litre)	yes
Level indicator (blackwater)	yes
Wheel steering	electric



ACCOMMODATION

Cabins	2
Berths	4
Floor	teak and holly
Heating	electric 220V Eberspracher
Dinette	yes
Sliding door to cockpit	yes
Galley	yes
Countertop	corian
Sink	Corian
Cooker	calor gas Smev 2-burner
Fridge	Isotherm CR85
Hot water system	220V + engine Isotemp Basic
Water pressure system	electrical
Owners cabin	v-bed
Bed length (m)	2
Wardrobe	hanging and shelves
Bathroom	separate
Toilet	separate
Toilet system	electric Jabsco
Wash basin	at the toilet
Shower	separate
Guest cabin 1	double bed
Bed length (m)	2
Wardrobe	hanging and shelves

MACHINERY

No of engines	2
Make	Volvo Penta
Type	D3
HP	220



kW	161,70
Fuel	diesel
Year installed	2015
Maximum speed (kn)	40
Cruising speed (kn)	25
Consumption (l/hr)	55 L. at 30 knts.
Engine hours	95
Engine cooling system	freshwater heat exchanger
Drive	Z-drive
Engine controls	electrical
Bowthruster	electric Side-power 6Hp
Manual bilge pump	yes
Electric bilge pump	yes
Batteries	2X AGM 12v-220A / 2x Mastervolt
Bowthruster battery	2x 50Ah
Battery monitor	Mastervolt
Battery charger	Mastervolt chargemaster 12/25-3
Battery charger/inverter	Mastervolt Mass combi 12/2000-100
Shorepower	with cable
Insulation transformer	Mastervolt Mass GI 3.5
Trimtabs	Lenco marine

NAVIGATION

Compass	Silva 125
VHF	Raymarine RayMic 260E
Plotter	Raymarine HybridTouch
Navigation lights	yes

EQUIPMENT

Fixed windscreen	yes
Storm blinds	yes



DELTA 33 OPEN

Sprayhood	yes
Cockpit cover	yes
Cockpit cushions	yes
Cockpit table	yes
Bathing platform	yes
Boarding ladder	stainless steel
Deck shower	yes
Anchor	Bruce
Anchor chain	yes
Windlass	electrical With remote control
Wiper	Speich
Window heating	yes
Horn	electric
Fenders	yes
Mooring lines	yes
Tools	yes
Radio-cd player	Pioneer with AUX and Bluetooth
Sub-woofer	Bose
Cockpit speakers	Sony Marine
Speakers in cabin	Bose



DELTA 33 OPEN



DELTA 33 OPEN



DELTA 33 OPEN



DELTA 33 OPEN



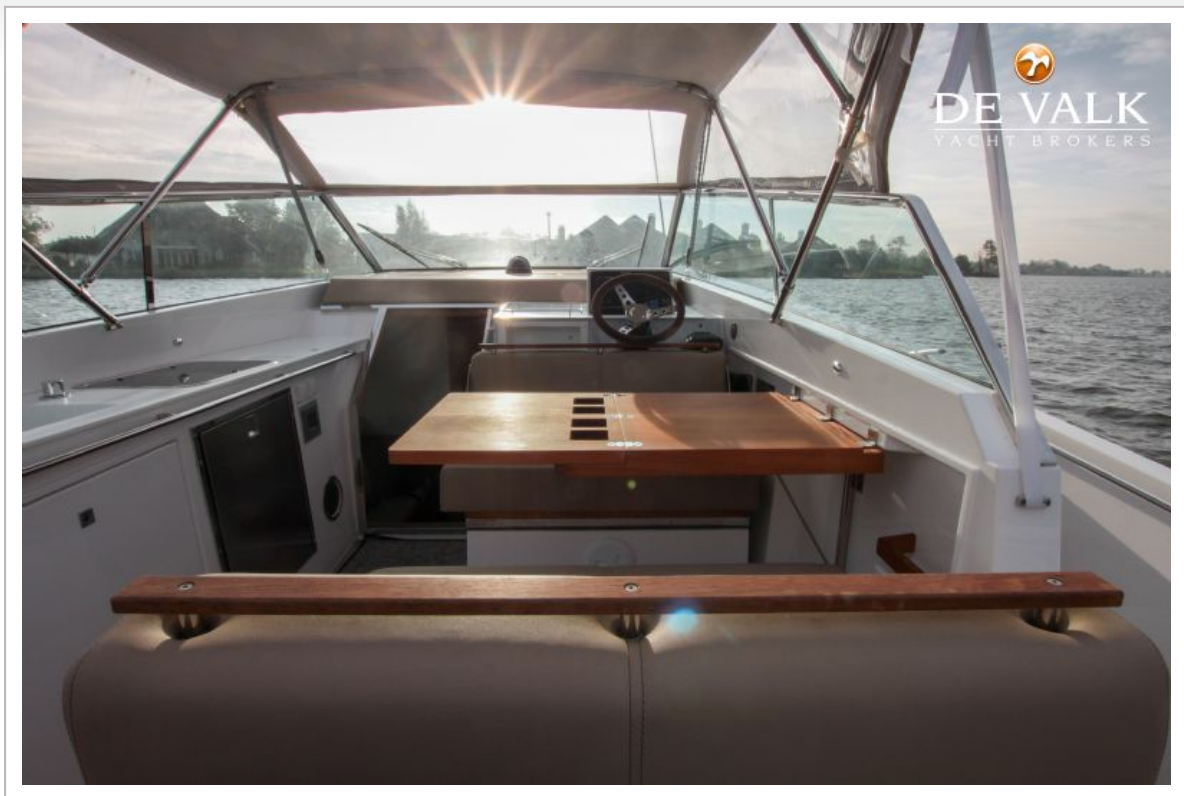
DELTA 33 OPEN



DELTA 33 OPEN



DELTA 33 OPEN



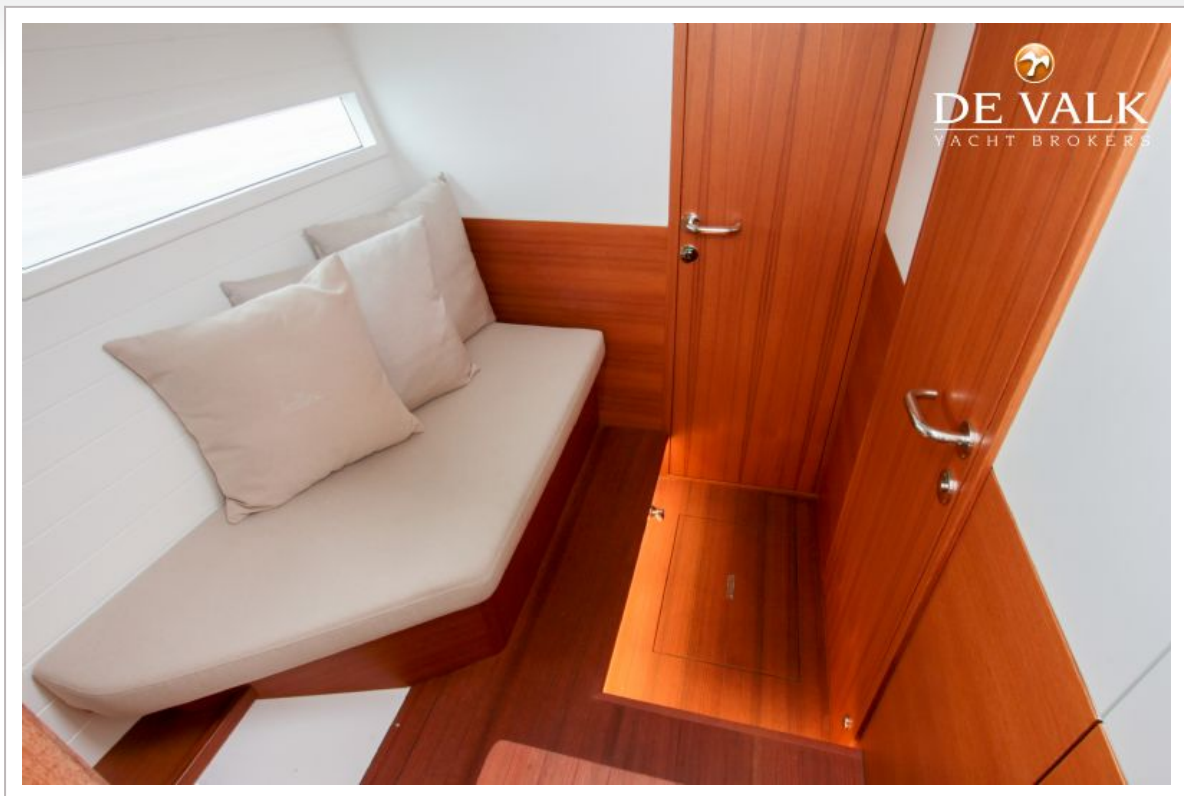
DELTA 33 OPEN



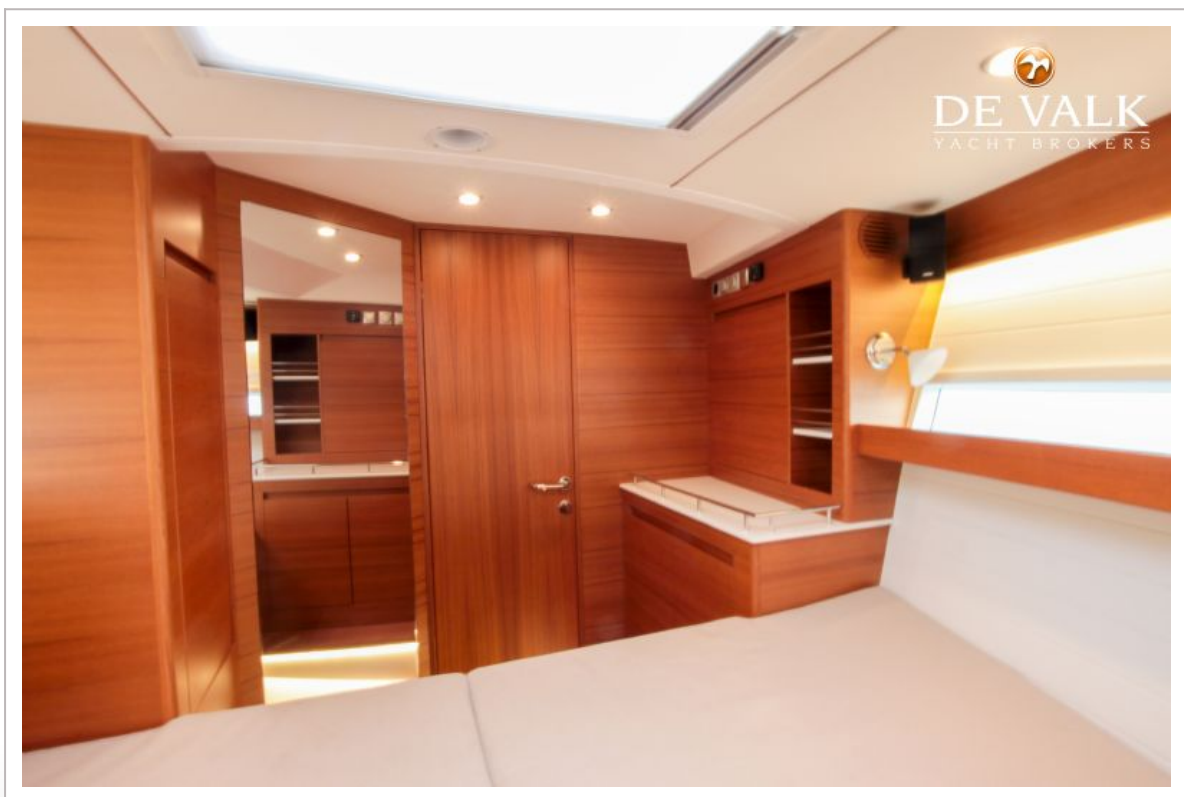
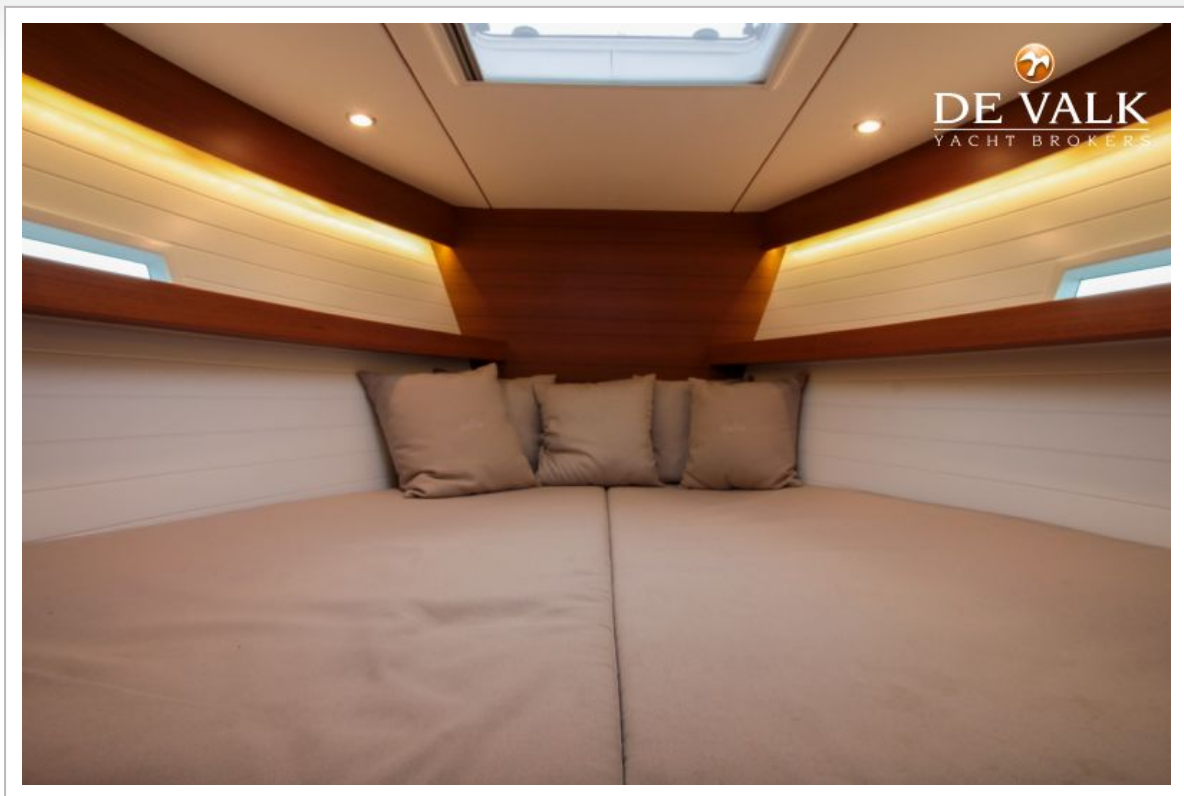
DELTA 33 OPEN



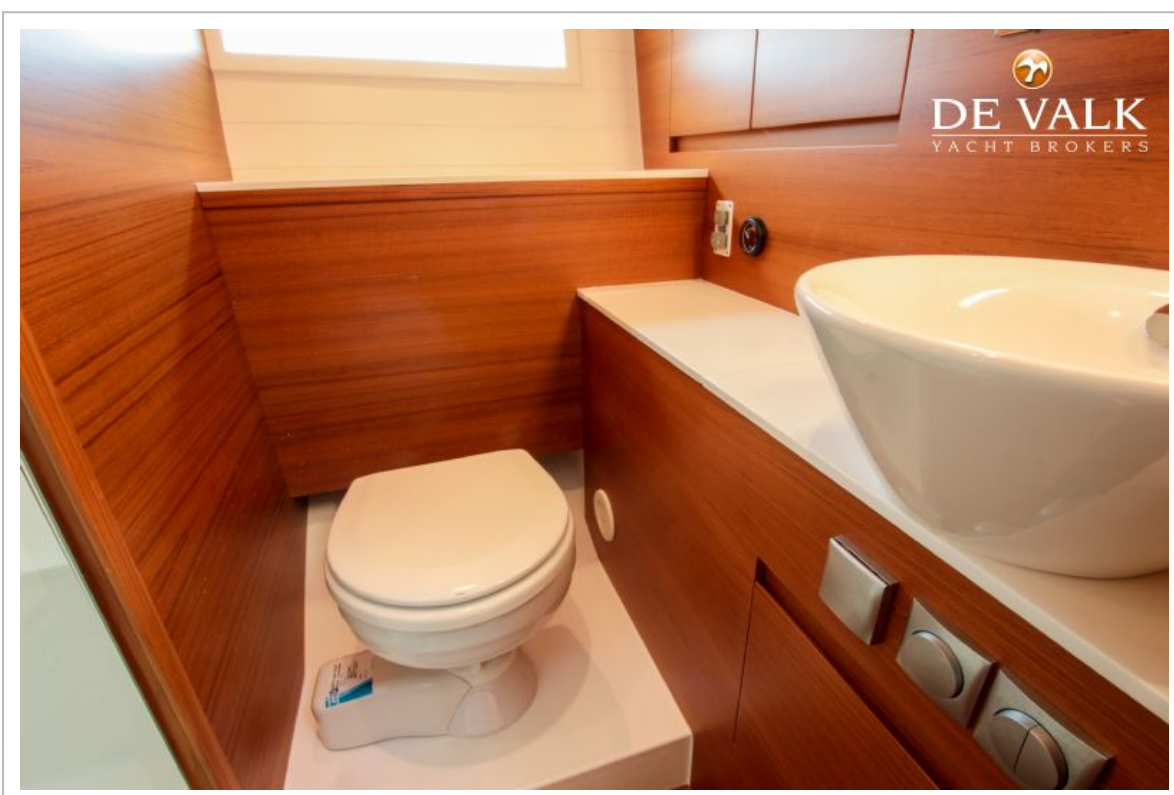
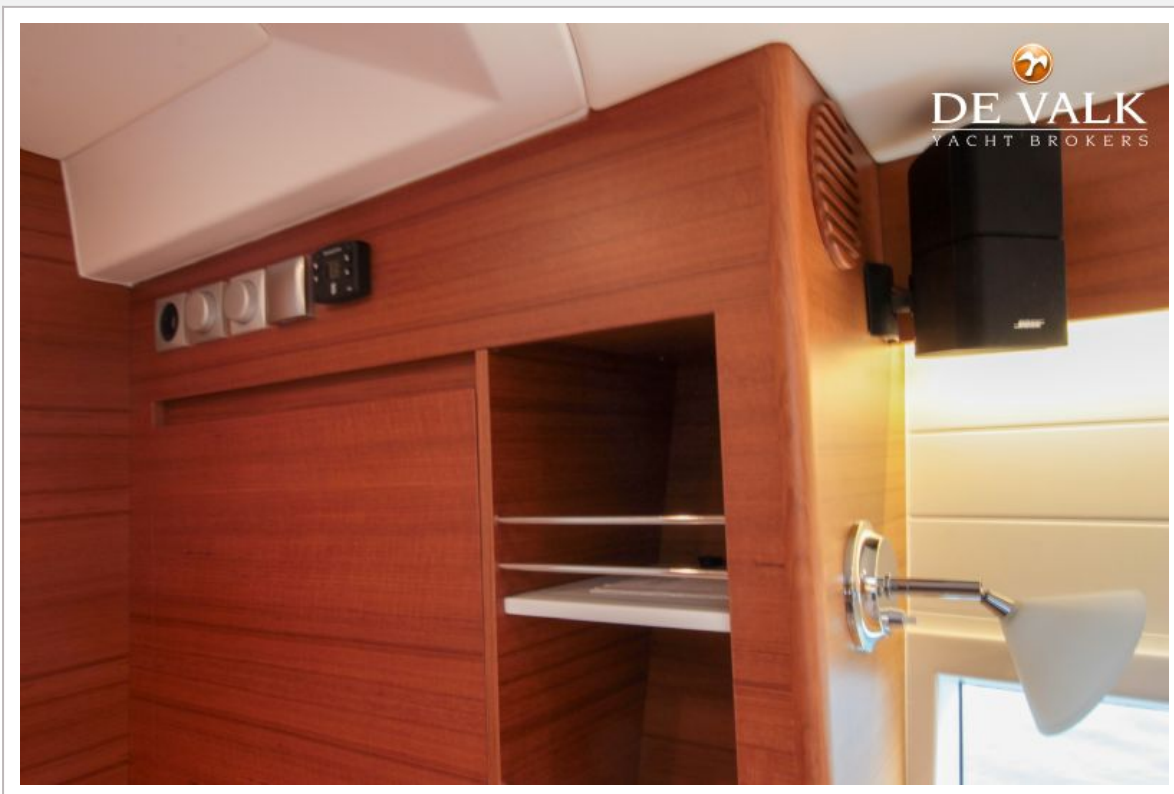
DELTA 33 OPEN



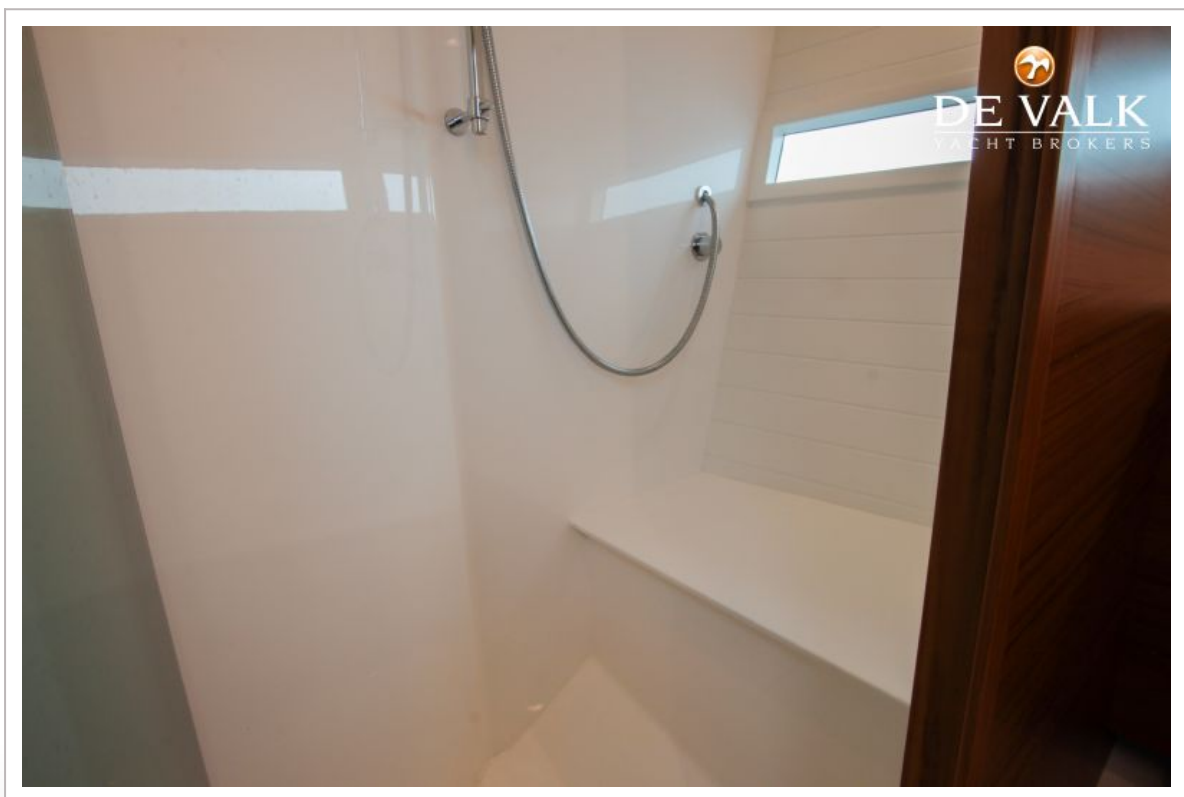
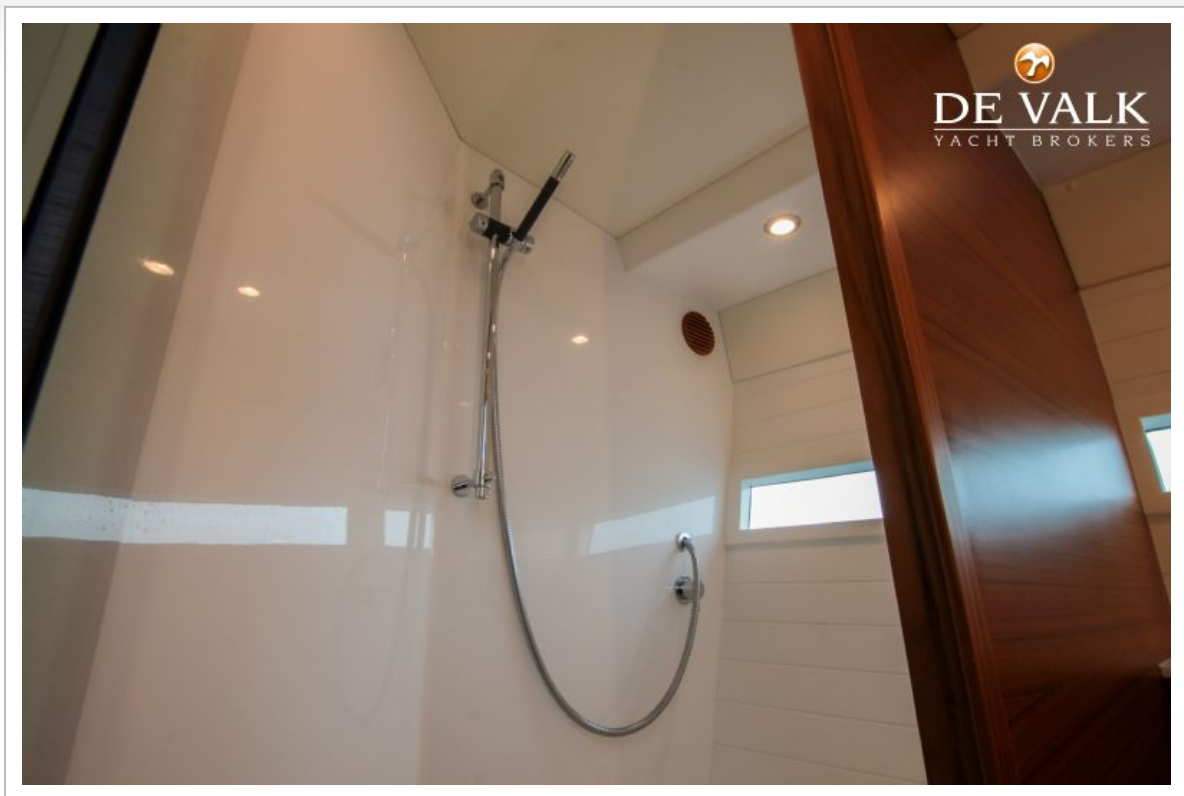
DELTA 33 OPEN



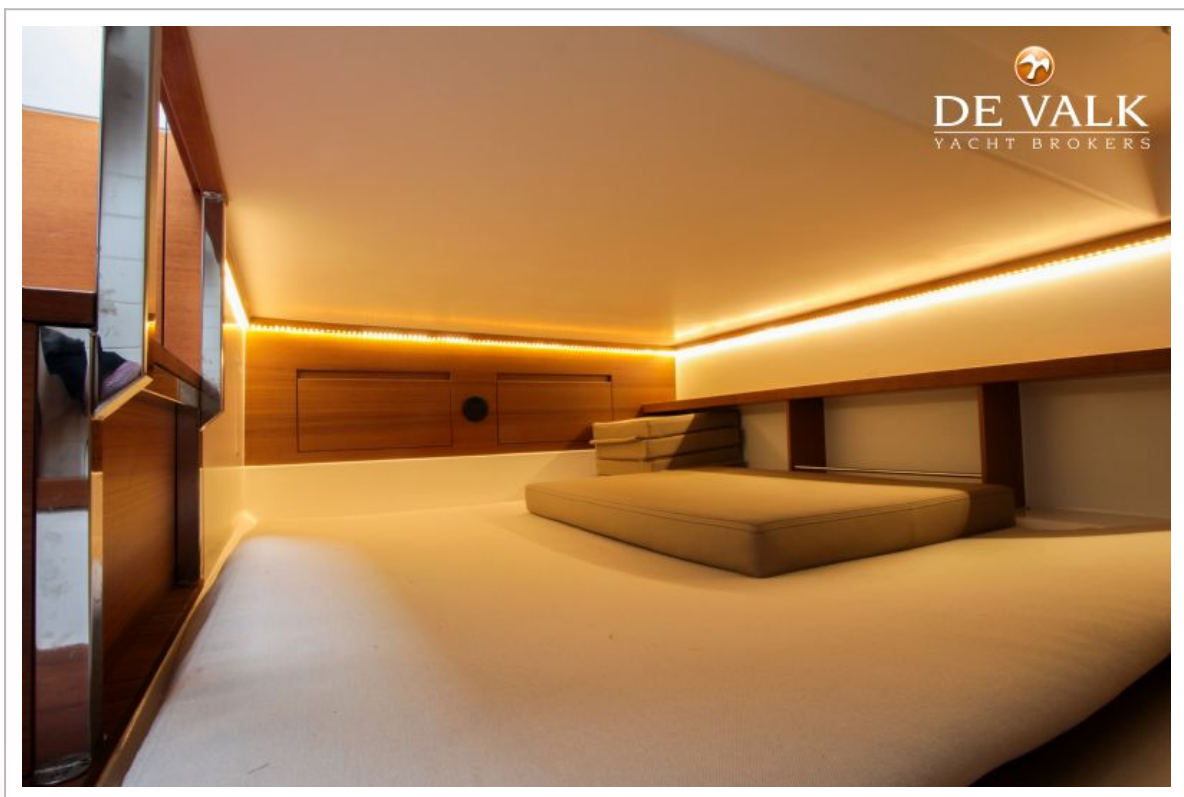
DELTA 33 OPEN



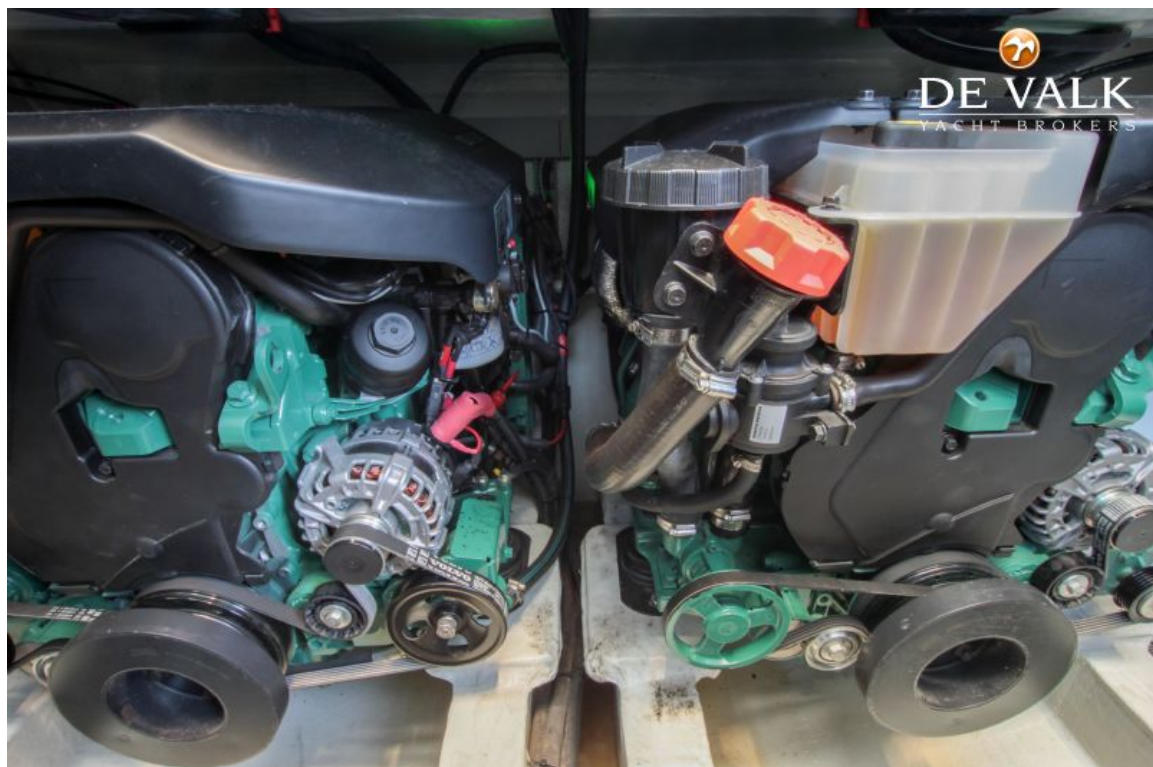
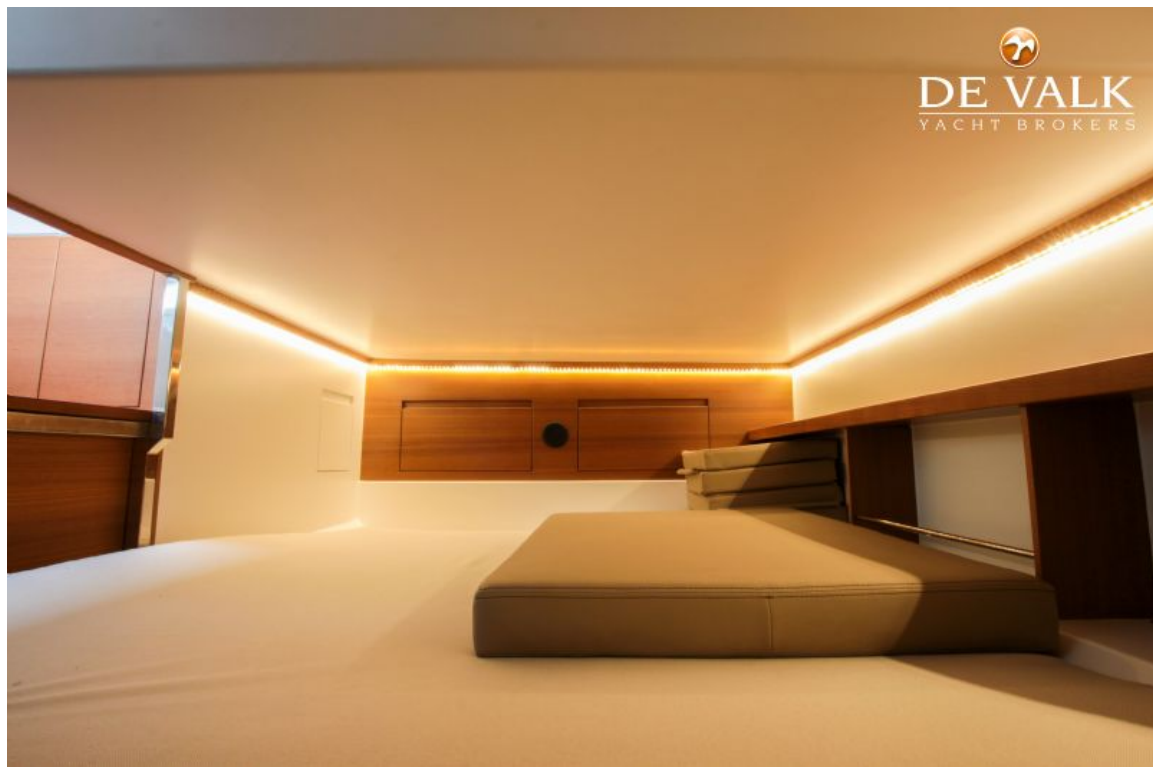
DELTA 33 OPEN



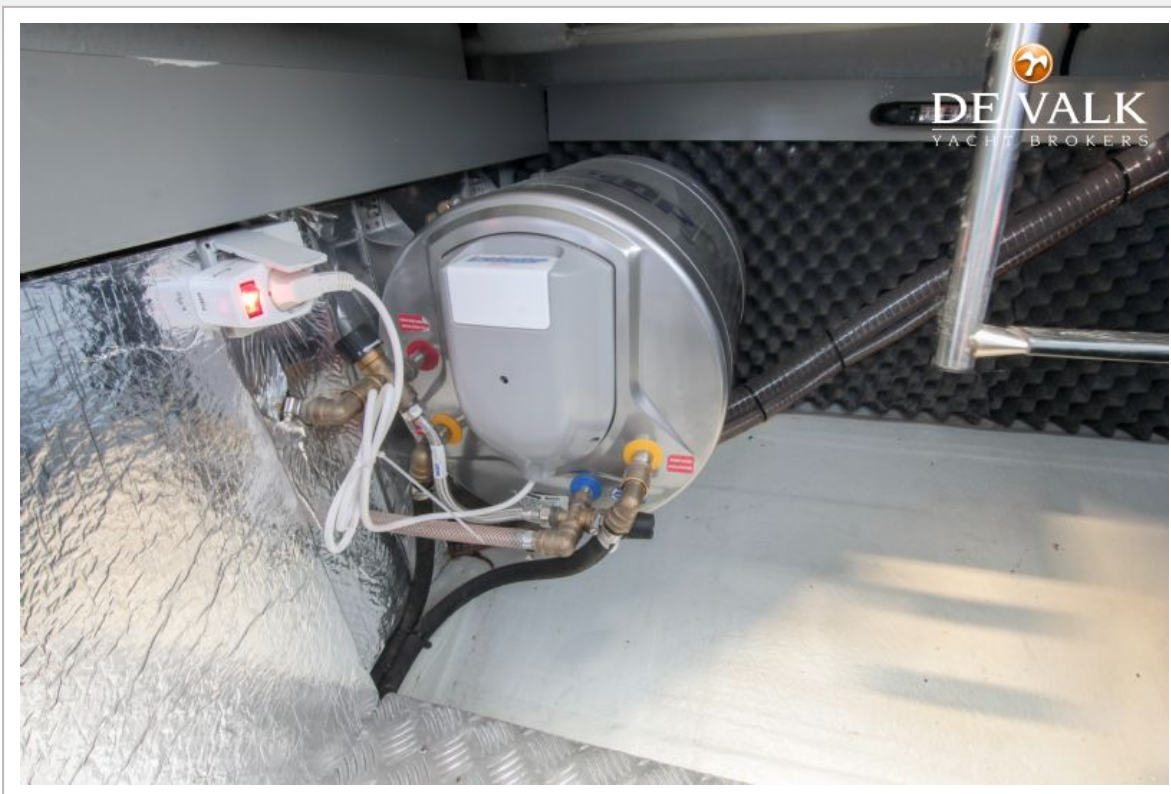
DELTA 33 OPEN



DELTA 33 OPEN



DELTA 33 OPEN



DELTA 33 OPEN

