



STENTOR 1700

STENTOR 1700

BROKER'S COMMENTS

The Stentor 1700 is designed by Vripack and built by Stentor Yachts, the 1700 is a unique, custom built yacht. Offered by the first and experienced owner who knows the boat from the very first plate to the last detail. The Stentor is very well equipped with a.o. stabilizers, generator and central heating. Due to the second hydraulic engine(homer) and CE-A certification she can be classified as long range oceangoing yacht. The large cabins, salon and kitchen makes staying aboard the Stentor 1700 very comfortable and pleasurable.

Koen Mulder

SPECIFICATIONS

Dimensions	17.00 x 4.85 x 1.40 (m)	Builder	Stentor Maritime
Built	2008	Cabins	3
Material	Steel	Berths	8
Engine(s)	1 x Vetus Deutz DTA 67 diesel	Hp/Kw	286.00 (hp), 210.00 (kw)
Asking price	sold (VAT)	Lying	at sales office

CONTACT

Sales office	De Valk Loosdrecht B.V.	Telephone	+31 (0)35 582 90 30
Address	't Breukeleveense Meentje 6 1231LM Loosdrecht / Wijdmeren NL	E-mail	loosdrecht@devalk.nl

DISCLAIMER

These particulars are given in good faith as supplied but cannot be guaranteed.



GENERAL

Model	STENTOR 1700
Type	motor yacht
LOA (m)	17,00
LWL (m)	15,80
Beam (m)	4,85
Draft (m)	1,40
Air draft (m)	5,40
Air draft min (m)	3,40
Headroom (m)	1,95
Year built	2008
Launched	2009
Builder	Stentor Maritime
Country	The Netherlands
Designer	Vripack
Displacement (t)	40
Gross tonnage	46
Net tonnage	36
CE norm	A
Hull material	steel
Hull colour	blue
Hull shape	multi hard chine
Superstructure material	steel
Rubbing strake	stainless steel
Deck material	steel
Deck finish	teak
Superstructure deck finish	teak
Antifouling (year)	2017
Window frame	aluminium
Window material	double glazing
Insulation	foam plates



STENTOR 1700

Fuel tank (litre)	steel 2650
Fuel tank 2 (litre)	steel 2650
Level indicator (fuel tank)	yes
Fuel daytank (litre)	steel 20
Level indicator (daytank)	yes
Freshwater tank (litre)	stainless steel 2x 1100
Level indicator (freshwater)	yes
Blackwater tank (litre)	stainless steel 600
Level indicator (blackwater)	yes
Blackwater tank extraction	deck extraction + pump
Greywater tank (litre)	stainless steel 600
Level indicator (greywater)	yes
Wheel steering	hydraulic
Inside helm position	yes
Outside helm position	hydraulic
Emergency tiller	yes

ACCOMMODATION

Cabins	3
Berths	8
Interior	Anigre
Floor	parquet
Aft deck	yes
Deck saloon	yes
Saloon	yes
Headroom saloon (m)	1,95
Heating	central heating Kabola
Heating 2	electric 220V
Air-conditioning	single cycle airco Cruisair 24 BTU
Chart table	yes
Aft Cabin	yes



STENTOR 1700

Dinette	yes
Dinette to convert into berth	yes
Opening door to aft deck	yes
Galley	yes
Countertop	corian
Sink	stainless steel 2x
Cooker	calor gas Smeg
Oven	Smeg
Extractor	yes
Fridge	Liebherr with freezer
Freezer	Engel, in wine cellar
Wine cooler	yes
Hot water system	220V Isotemp boiler
Water pressure system	electrical
Dishwasher	Siemens
Kettle	yes
Coffee maker	yes
Owners cabin	double bed
Bed length (m)	2
Wardrobe	hanging/drawers/shelves
Bathroom	en suite
Toilet	separate
Toilet system	electric
Wash basin	in the bathroom
Shower	en suite
Extra info	LG TV, DVD and TV receiver, safe under bed
Guest cabin 1	double bed
Bed length (m)	2
Wardrobe	hanging/drawers/shelves
Bathroom	shared
Toilet	separate
Toilet system	electric



STENTOR 1700

Wash basin	at the toilet
Shower	separate
Extra info	Deawoo TV
Guest cabin 2	double bed
Bed length (m)	2
Wardrobe	hanging/drawers/shelves
Bathroom	shared
Toilet	separate
Toilet system	electric
Wash basin	at the toilet
Shower	separate
Washing machine/dryer combi	Miele
Wet bar	Sink and fridge outside
Extra info	Large wine cellar with freezer and safe

MACHINERY

No of engines	1
Make	Vetus Deutz
Type	DTA 67
HP	286
kW	210,00
Fuel	diesel
Year installed	2008
Maximum speed (kn)	10,00
Cruising speed (kn)	7,00
Consumption (l/hr)	8,00
Engine hours	795
Engine cooling system	freshwater heat exchanger
Drive	shaft
Engine controls	electrical
Gearbox	hydraulic



STENTOR 1700

Secondary engine	diesel electric Hydraulic
Engine controls	electrical
Bowthruster	hydraulic With remote control
Sternthruster	hydraulic With remote control
Exhaust	watercooled
Propeller type	fixed
Propeller blades	5
Propeller shaft material	stainless steel Both
Shaft lubrication	water
Manual bilge pump	yes
Electric bilge pump	yes
Bilge alarm	yes
Electrical installation	12/24/220
Generator	wet exhaust Mastervolt whisper 16Kw
Running hours generator	130
Start battery	2x 160 Ah, gel
Service battery	6x 200 Ah, AGM
Generator battery	1x 160 Ah, AGM
Battery monitor	Mastervolt Masterlink BTM-3
Battery charger/inverter	Mastervolt Mass Combi
Shorepower	with cable
Insulation transformer	Mastervolt Mass
Stabilizers	fin Najad
Extra info	Water/diesel filter with alarm

NAVIGATION

Electric compass	Autohelm Personal Compass
Depth sounder/log	Raymarine ST60+
Windset	Raymarine ST60+
Repeater	yes
VHF	Raymarine Ray 240 E



STENTOR 1700

VHF handheld	Raymarine Ray 101 E
Autopilot	Raymarine Smart Pilot ST 8002, with remote control
Rudder angle indicator	Raymarine ST60+
Radar	Raymarine
Plotter	Raymarine E120
Navtex	Mc Murdo NAV 6
Electronic chart(s)	yes
AIS receiver	Raymarine 250
Camera	Stern
Navigation lights	yes
Searchlight	With remote control
Extra info	Holland Nautic follow up steering

EQUIPMENT

Fixed windscreen	yes
Sprayhood	yes
Cockpit table	Two, that can be combined to one
Bathing platform	yes
Boarding ladder	stainless steel
Bow ladder	yes
Gangway	Opacmare with remote control
Deck shower	yes
Anchor	Pool
Anchor chain	yes
Anchor 2	Pool
Anchor chain	yes
Windlass	hydraulic
Capstan	yes
Windlass aft	hydraulic
Deck wash	2x
Sea railing	stainless steel

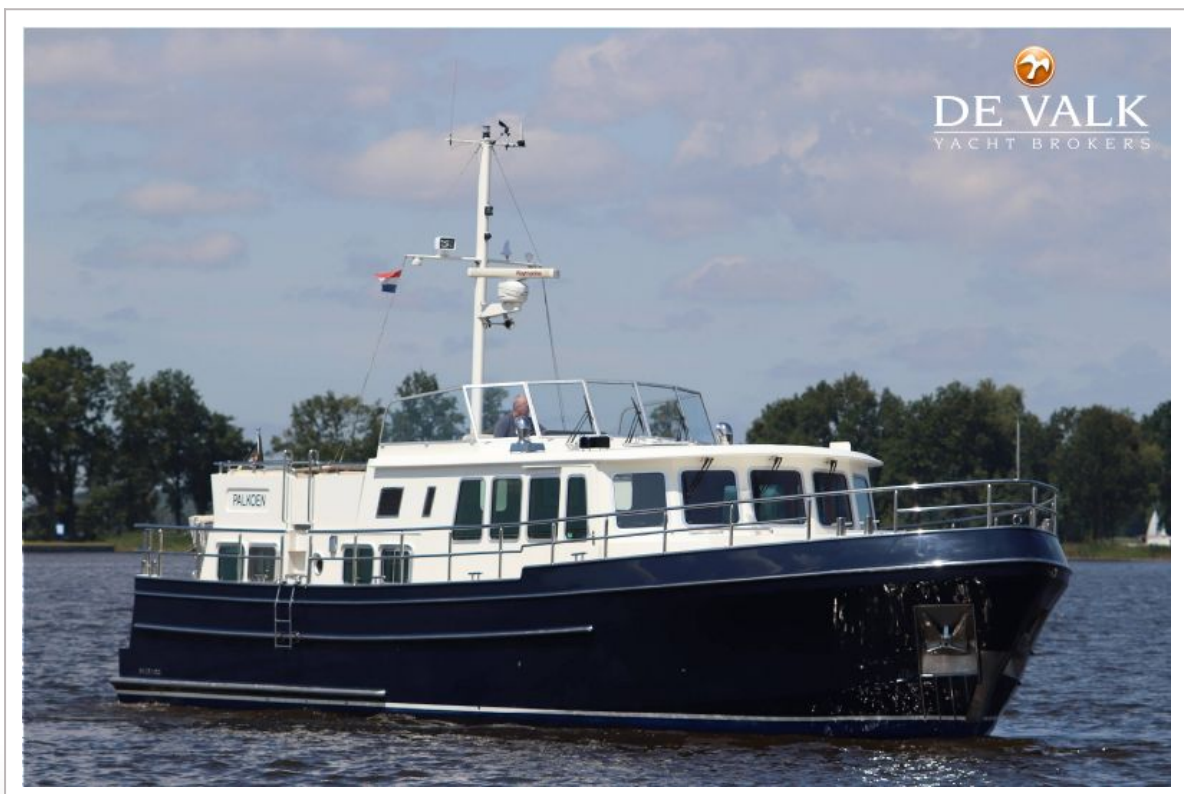


STENTOR 1700

Railing side opening gates	yes
Wiper	yes
Horn	electric
Alarm system	yes
TV	Samsung
TV receiver	KPN
Radio-cd player	VDO Dayton
DVD player	Sony
Cockpit speakers	yes
Speakers in salon	yes
Clock - barometer	yes
Extinguisher in engine room	yes
Auto extinguisher system	yes
Extra info	Large Lazarette



STENTOR 1700



STENTOR 1700



STENTOR 1700



STENTOR 1700



STENTOR 1700



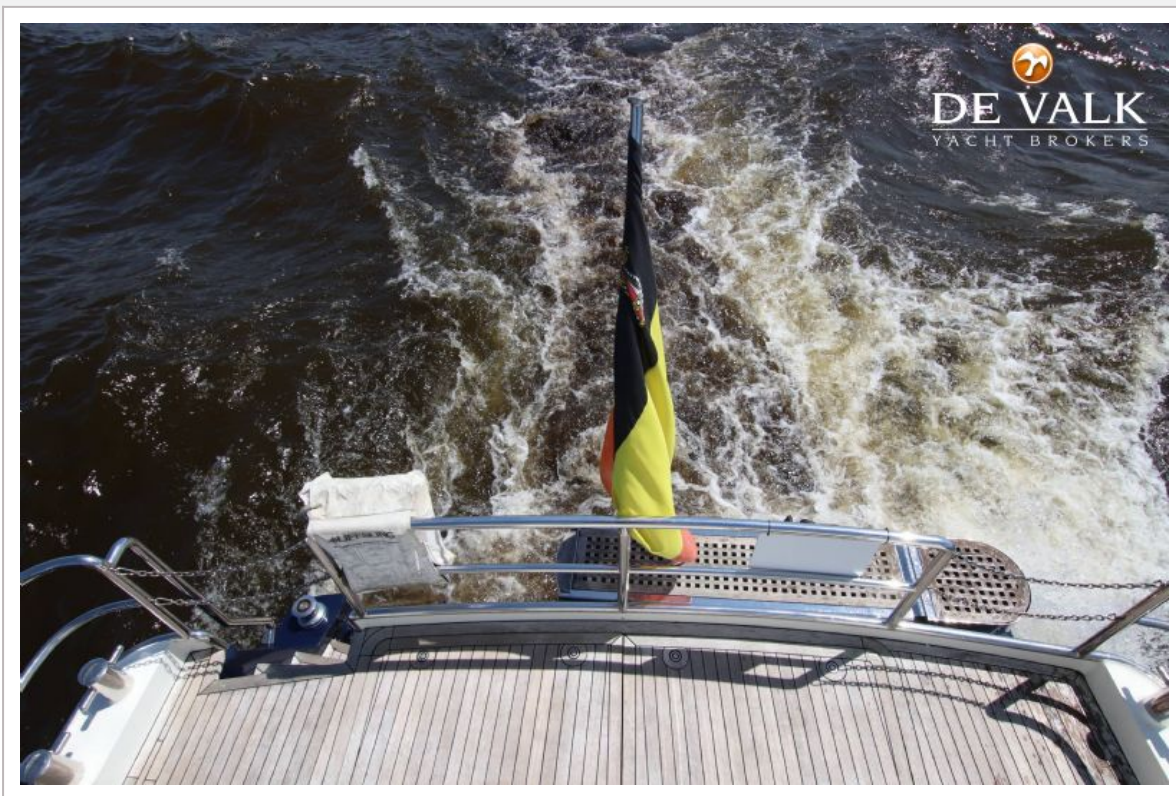
STENTOR 1700



STENTOR 1700



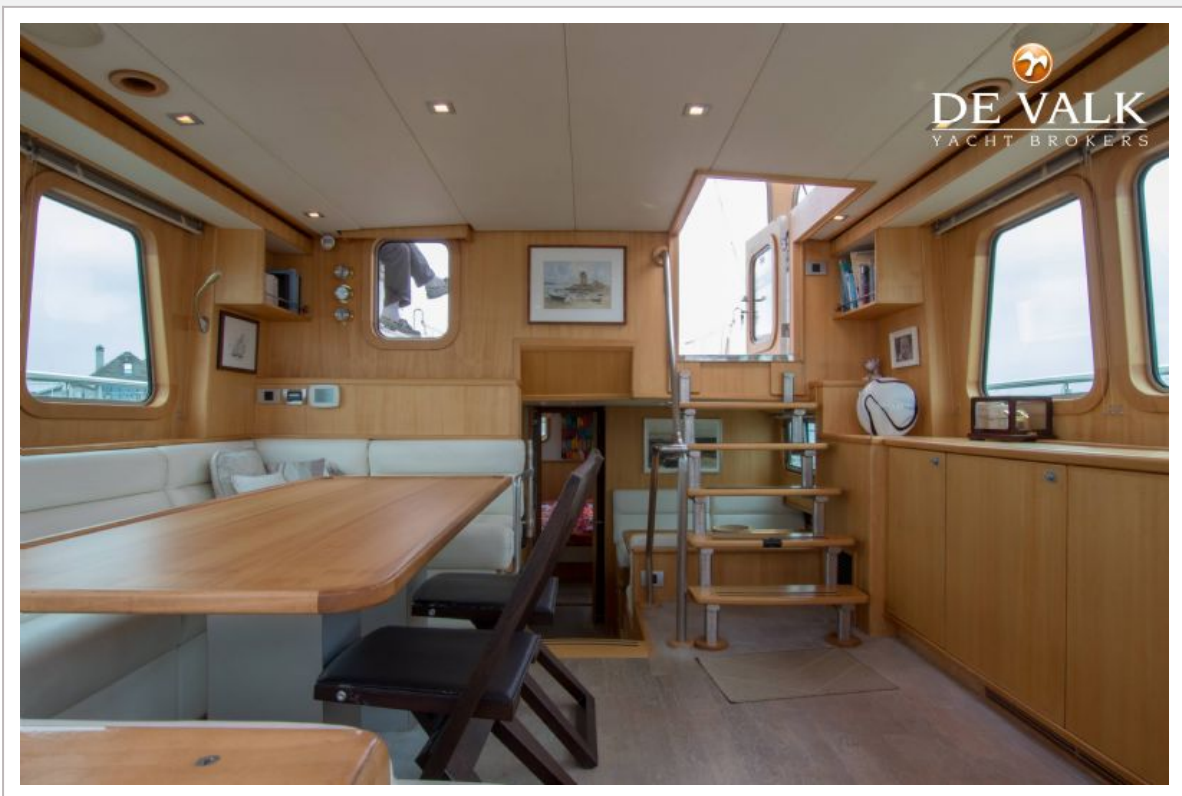
STENTOR 1700



STENTOR 1700



STENTOR 1700



STENTOR 1700



STENTOR 1700



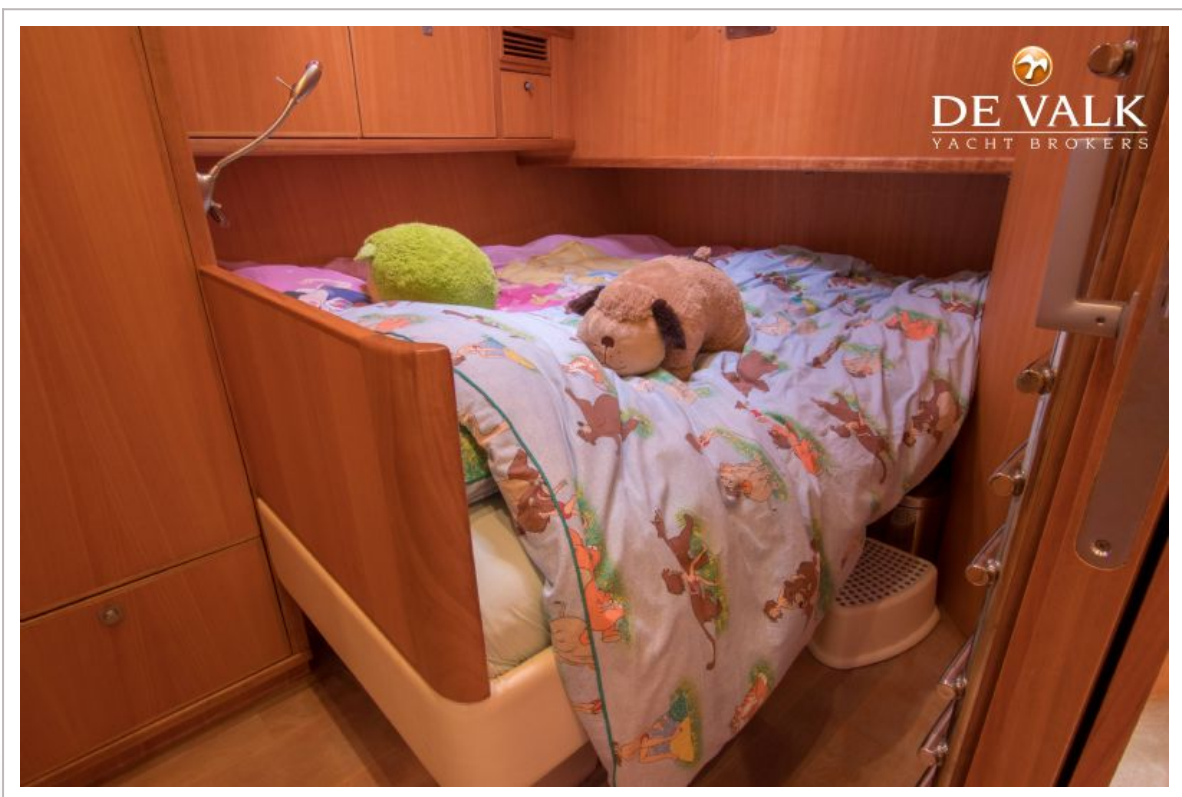
STENTOR 1700



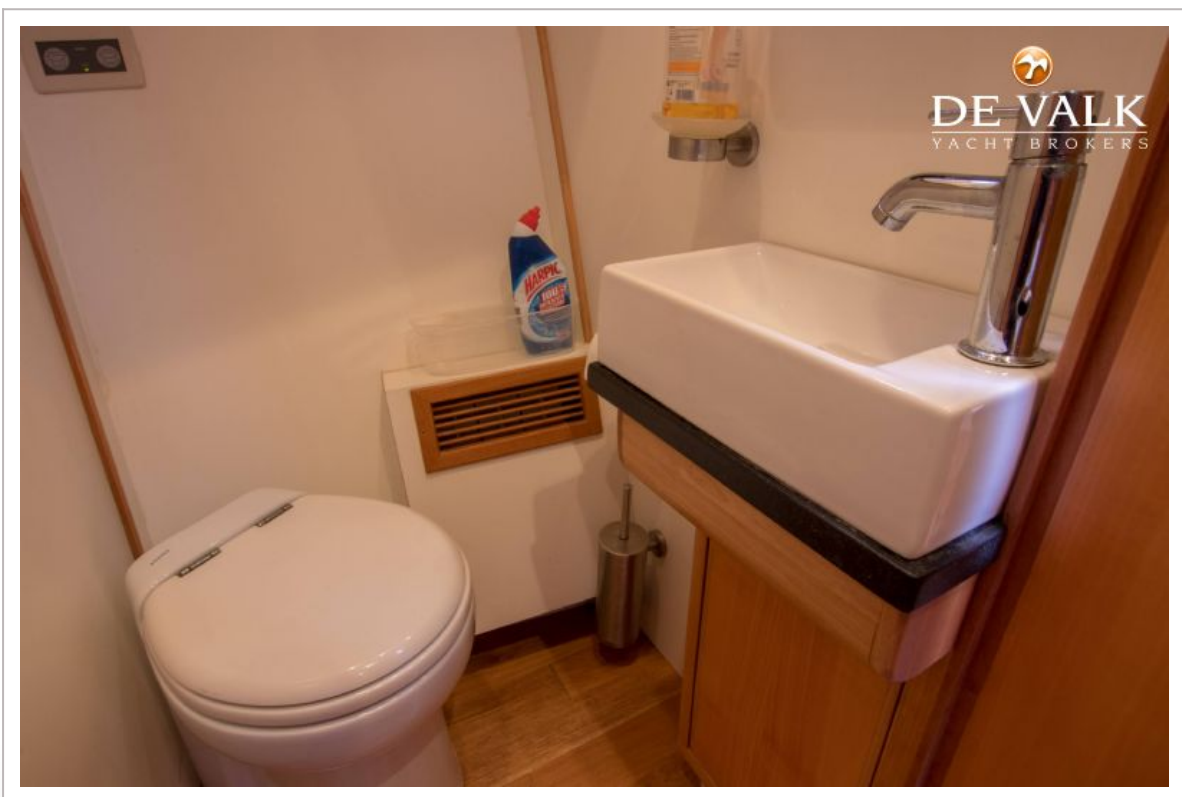
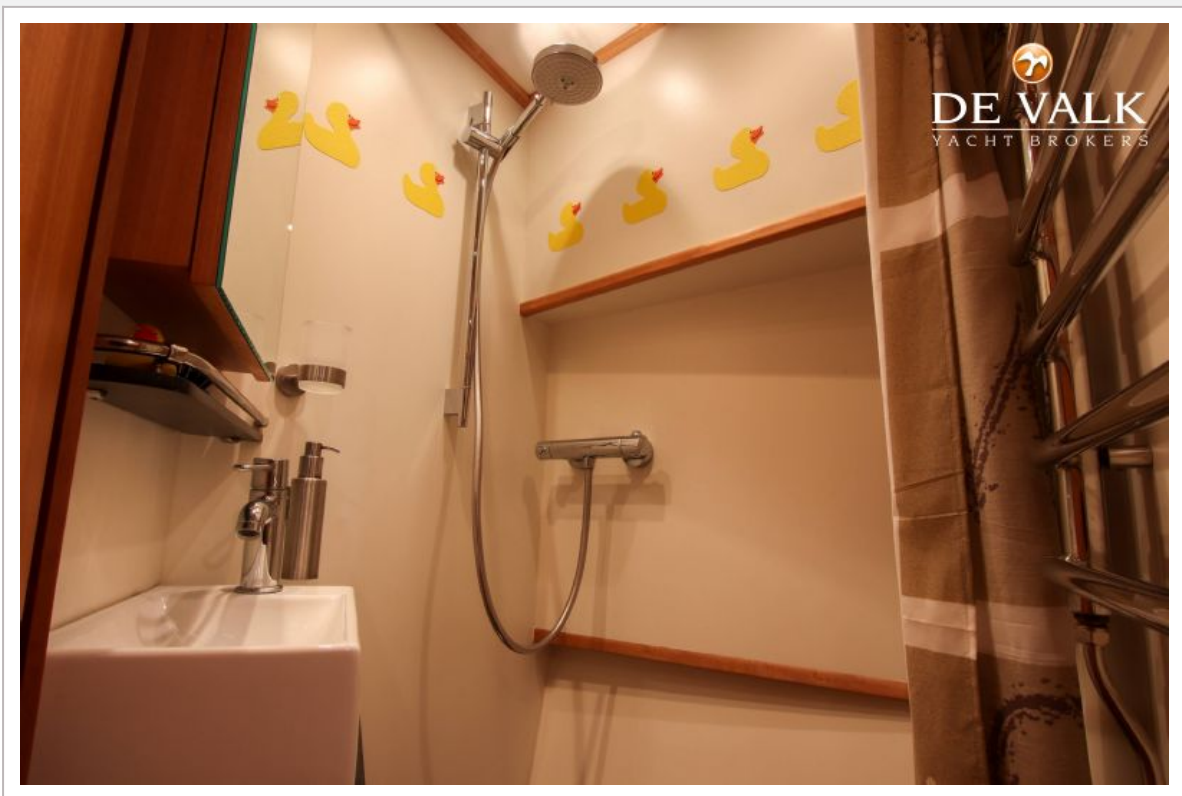
STENTOR 1700



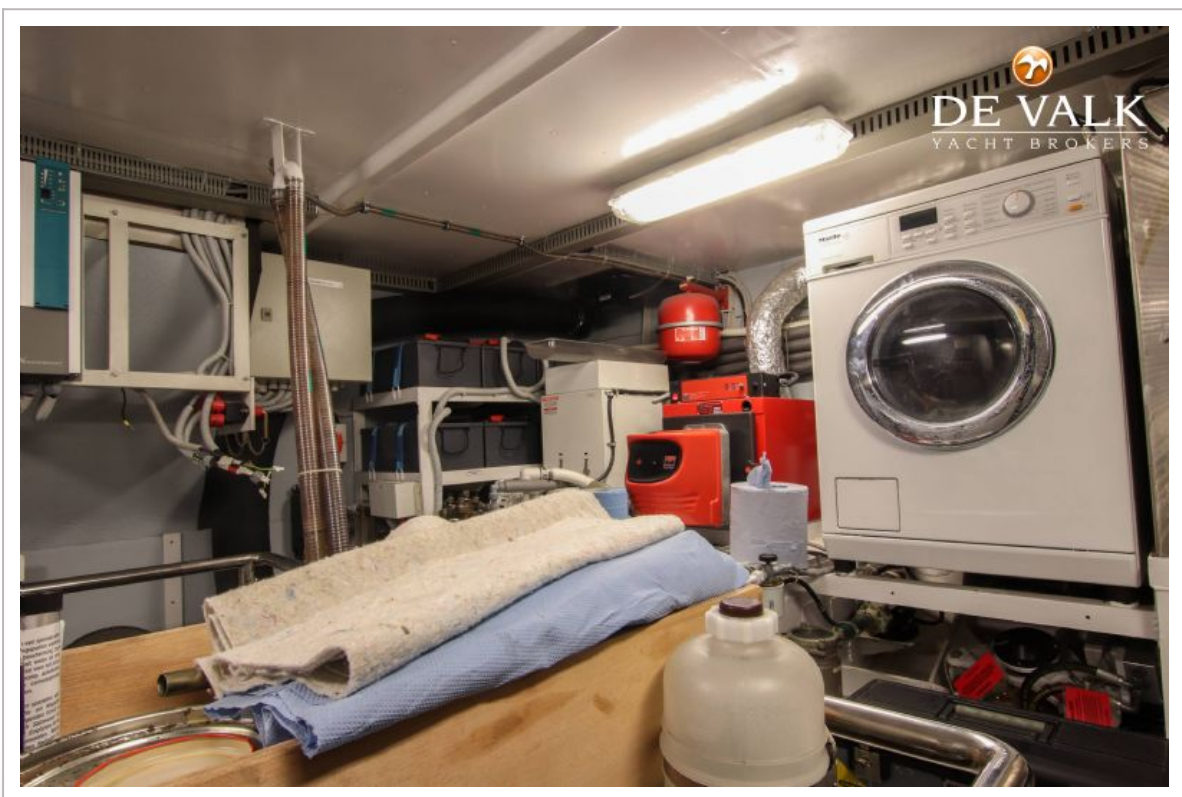
STENTOR 1700



STENTOR 1700



STENTOR 1700



STENTOR 1700

