



## EXCELLENT 960 EXPRESS

# EXCELLENT 960 EXPRESS

## BROKER'S COMMENTS

The Excellent 960 Express has a timeless design and has proven its worth by many years. With a clever interior layout and a huge cockpit area, it appears to be the perfect spot on the lake, or with the nice cockpit tent also a longer stay on board belongs to the possibilities. Fitted with a smooth running Yanmar 6 cilinder diesel engine she is a pleasure to sail both the inland waters and coastal cruising. Equipped with an electric bow and stern thruster also the smallest approach can be handled. We are proud to offer this excellent Dutch built motor yacht.

*Peter van Diggele*

## SPECIFICATIONS

<b>Dimensions</b>	10.20 x 3.20 x 1.00 (m)	<b>Builder</b>	Excellent Yachts
<b>Built</b>	2001	<b>Cabins</b>	1
<b>Material</b>	GRP	<b>Berths</b>	4
<b>Engine(s)</b>	1 x Yanmar 6LP-DTE diesel	<b>Hp/Kw</b>	250.00 (hp), 183.75 (kw)
<b>Asking price</b>	sold (VAT )	<b>Lying</b>	at sales office

## CONTACT

<b>Sales office</b>	De Valk Loosdrecht B.V.	<b>Telephone</b>	+31 (0)35 582 90 30
<b>Address</b>	't Breukeleveense Meentje 6 1231LM Loosdrecht / Wijdmeren NL	<b>E-mail</b>	loosdrecht@devalk.nl

## DISCLAIMER

These particulars are given in good faith as supplied but cannot be guaranteed.



# EXCELLENT 960 EXPRESS

## GENERAL

Model	EXCELLENT 960 EXPRESS
Type	motor yacht
LOA (m)	10,20
Beam (m)	3,20
Draft (m)	1,00
Air draft (m)	2,40
Air draft min (m)	2,05
Year built	2001
Builder	Excellent Yachts
Country	The Netherlands
Designer	De Vries Lentsch Jr
Displacement (t)	5,4
CE norm	C
Hull material	GRP
Hull colour	white
Hull thickness (mm)	15 m/m, 10 m/m
Hull shape	deep-V
Superstructure material	GRP
Superstructure (mm)	6 m/m
Rubbing strake	rubber
Deck material	GRP
Deck finish	non-skid moulded in
Cockpit deck finish	teak
Window frame	aluminium Black
Window material	glass Hardened
Deckhatch	Gebo
Fuel tank (litre)	440 +190 L.
Freshwater tank (litre)	350 L.
Blackwater tank (litre)	60 L.
Wheel steering	hydraulic Seastar



# EXCELLENT 960 EXPRESS

## Extra info

cockpit, self draining

## ACCOMMODATION

Cabins	1
Berths	4
Interior	teak
Heating	diesel ducted hot air Webasto Airtop 35
Sink	stainless steel
Cooker	calor gas Smev 8003
Microwave	Deaewood
Fridge	Coolmatic MDC,90 L.
Hot water system	220V + engine Boiler, 40 L.
Water pressure system	electrical
Owners cabin	double bed
Bed length (m)	2.20 x 1.40
Wardrobe	drawers and shelves
Toilet	Raske & v/d Meyde
Toilet system	manual
Wash basin	at the toilet
Shower	shared
Guest cabin 1	v-bed
Bed length (m)	2 x 2

## MACHINERY

No of engines	1
Make	Yanmar
Type	6LP-DTE
HP	250,00
kW	183,75
Fuel	diesel
Cruising speed (kn)	8



# EXCELLENT 960 EXPRESS

Consumption (l/hr)	16
Engine hours	1025
Engine cooling system	freshwater heat exchanger
Drive	shaft
Engine controls	bowden cable
Gearbox	hydraulic ZF
Bowthruster	electric QL, 50 kgf
Sternthruster	electric QL, 50 kgf
Exhaust	watercooled
Thrust bearing	yes
Propeller type	21 x 18 RH
Propeller blades	4
Propeller shaft material	stainless steel
Electric bilge pump	3, RM69
Electrical installation	12 Volt
Start battery	yes
Service battery	yes
Battery charger/inverter	Victron Phoenix 12/1600/75
Shorepower	yes
Trimtabs	Bennet

## NAVIGATION

Compass	Olympic 135
Depth sounder/log	VDO
Windset	VDO
VHF	Shipmate RS 8300
Autopilot	Simrad PH 14, need to be adjusted
Rudder angle indicator	VDO

## EQUIPMENT

Sprayhood	yes
-----------	-----



# EXCELLENT 960 EXPRESS

Sun awning	windows
Winter cover	yes
Bathing platform	yes
Boarding ladder	stainless steel
Anchor	yes
Anchor chain	30 m.
Windlass	electrical Quick
Sea railing	stainless steel
Grab rail (superstructure)	yes
Wiper	yes
Horn	Vetus
Radio-cd player	JVC



# EXCELLENT 960 EXPRESS





# EXCELLENT 960 EXPRESS





## EXCELLENT 960 EXPRESS

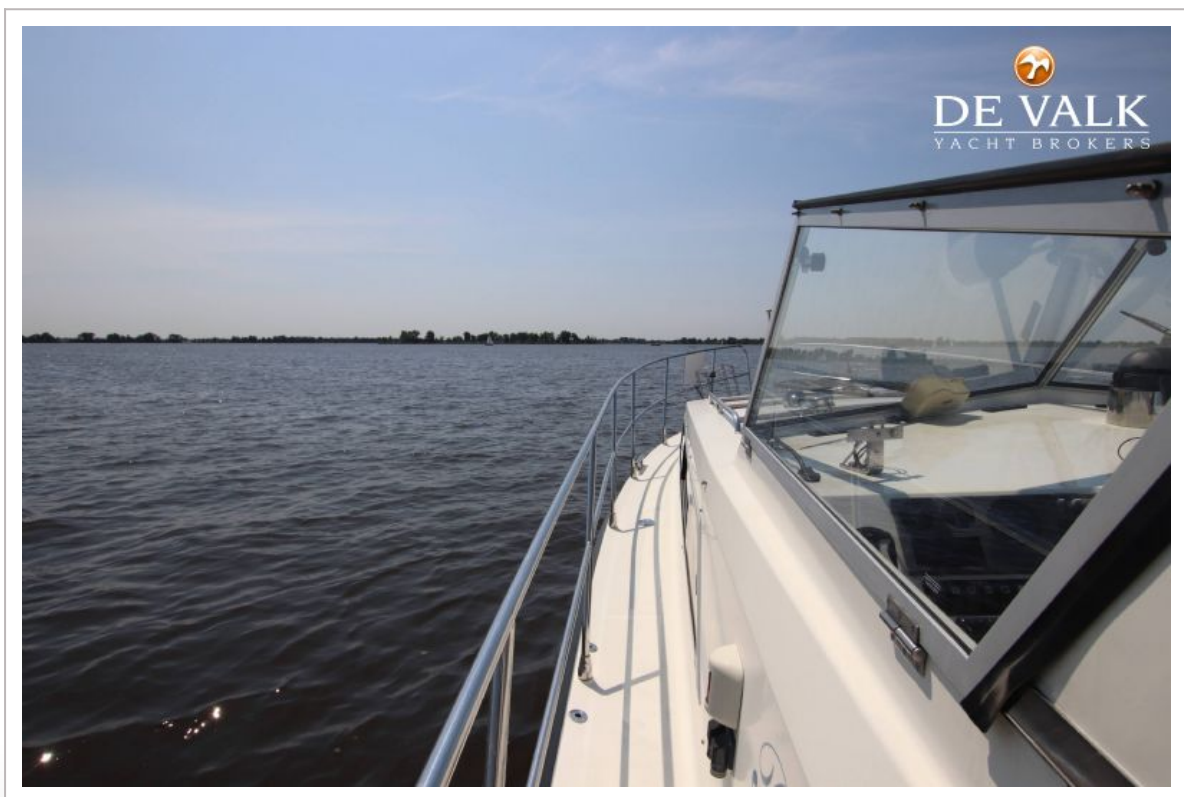


## EXCELLENT 960 EXPRESS

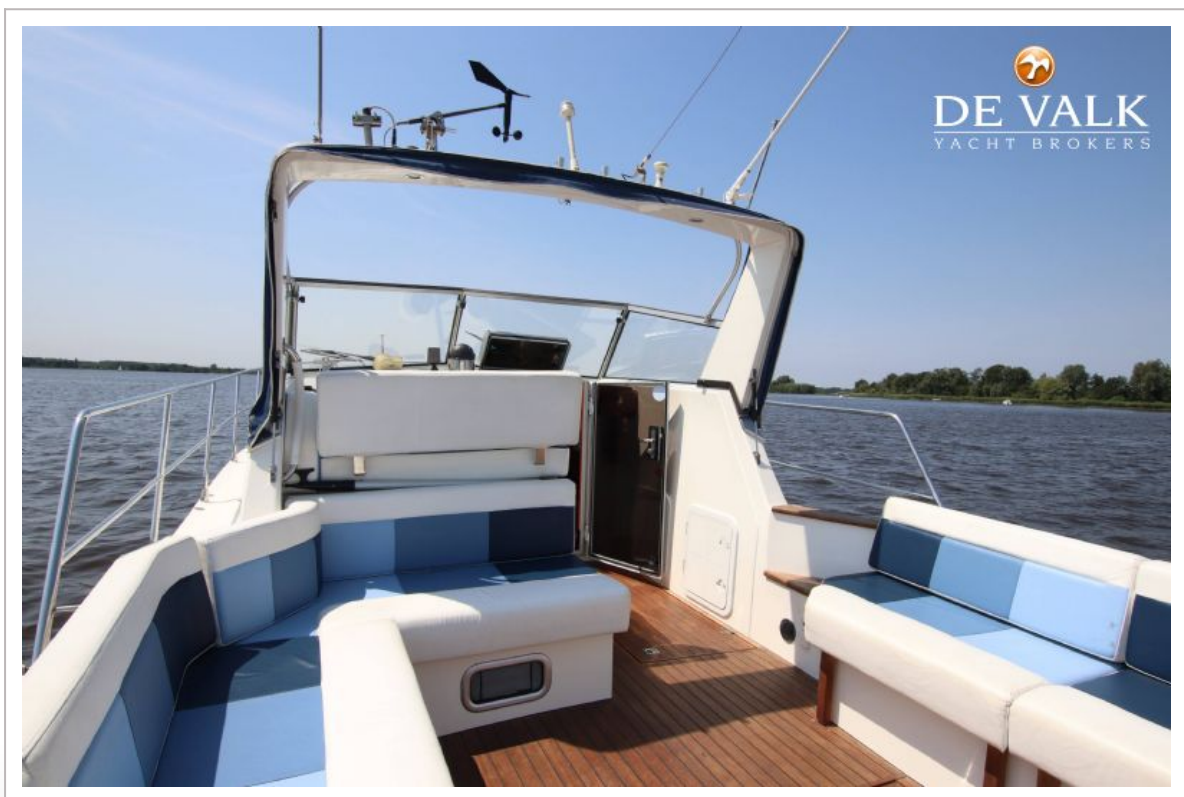




# EXCELLENT 960 EXPRESS



# EXCELLENT 960 EXPRESS





## EXCELLENT 960 EXPRESS

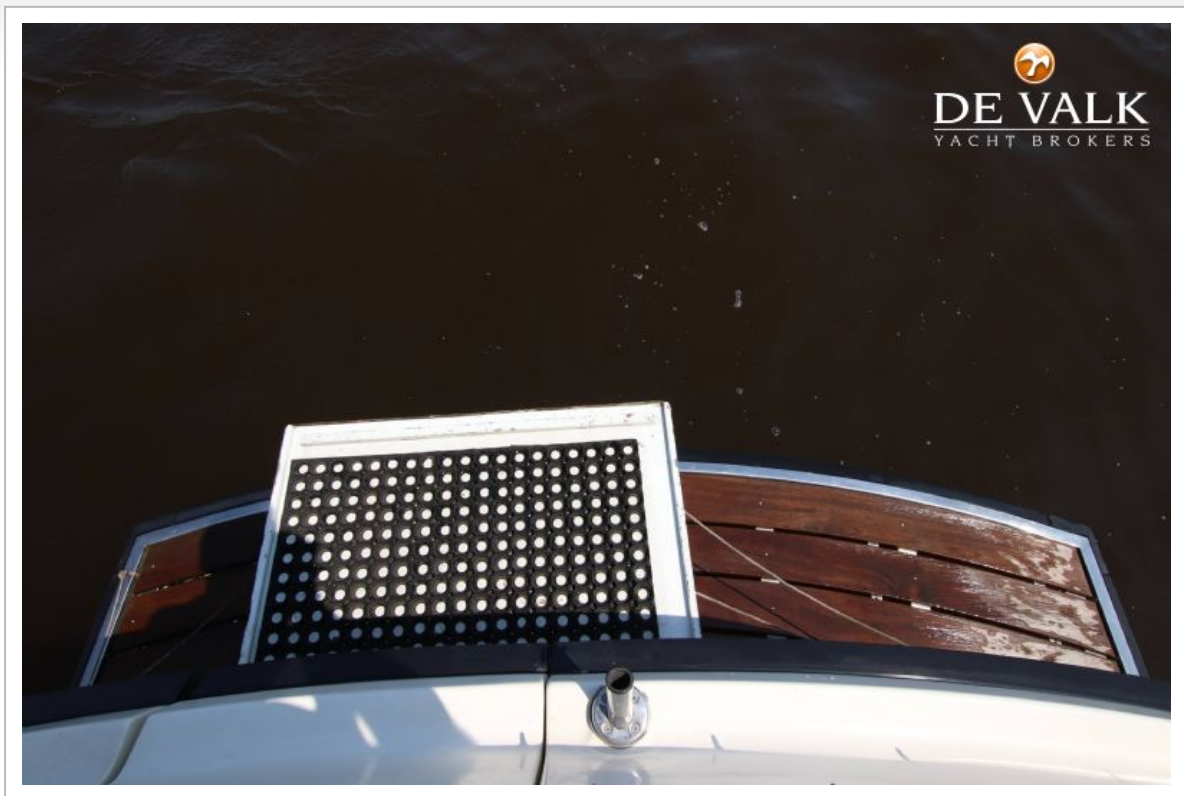


## EXCELLENT 960 EXPRESS





# EXCELLENT 960 EXPRESS



## EXCELLENT 960 EXPRESS

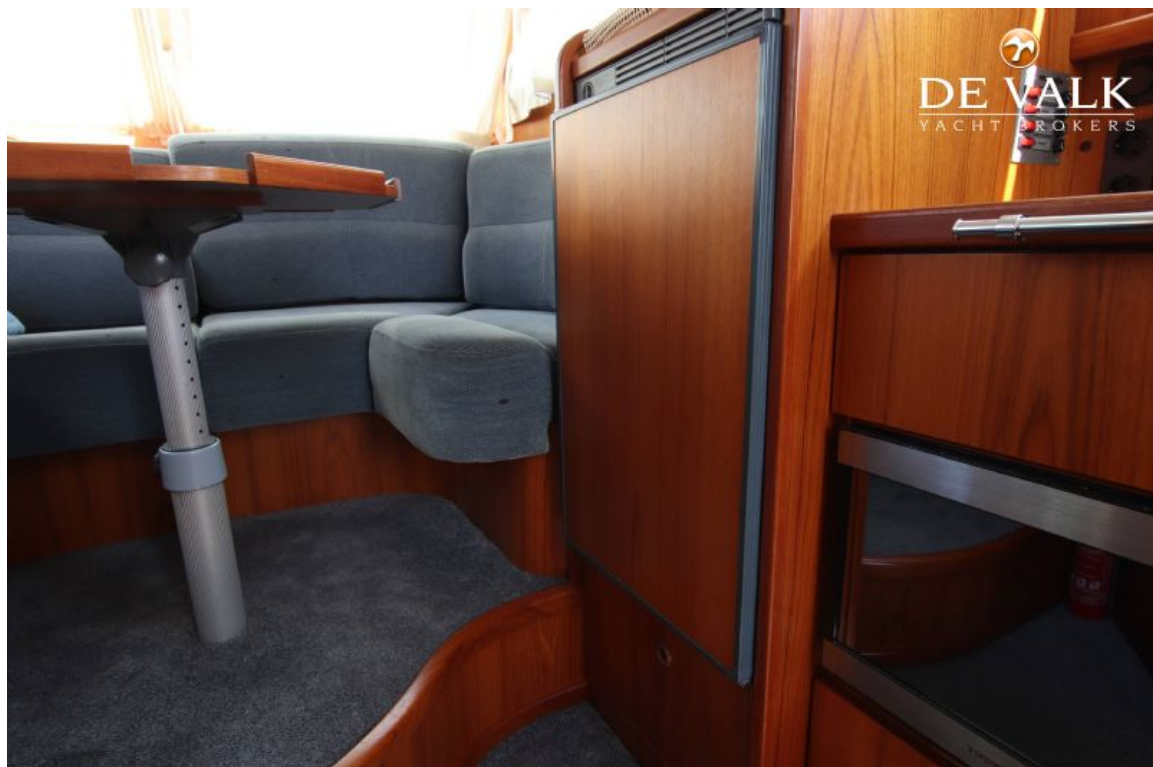




## EXCELLENT 960 EXPRESS



## EXCELLENT 960 EXPRESS





## EXCELLENT 960 EXPRESS

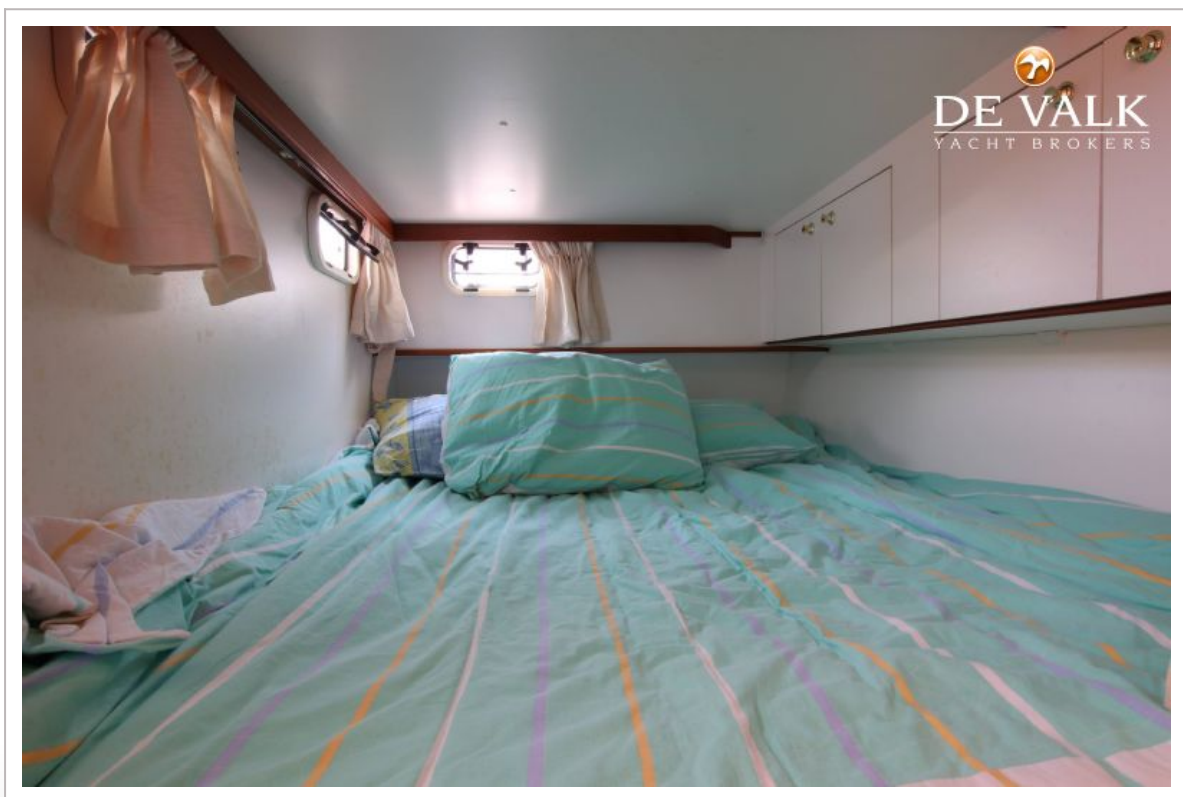
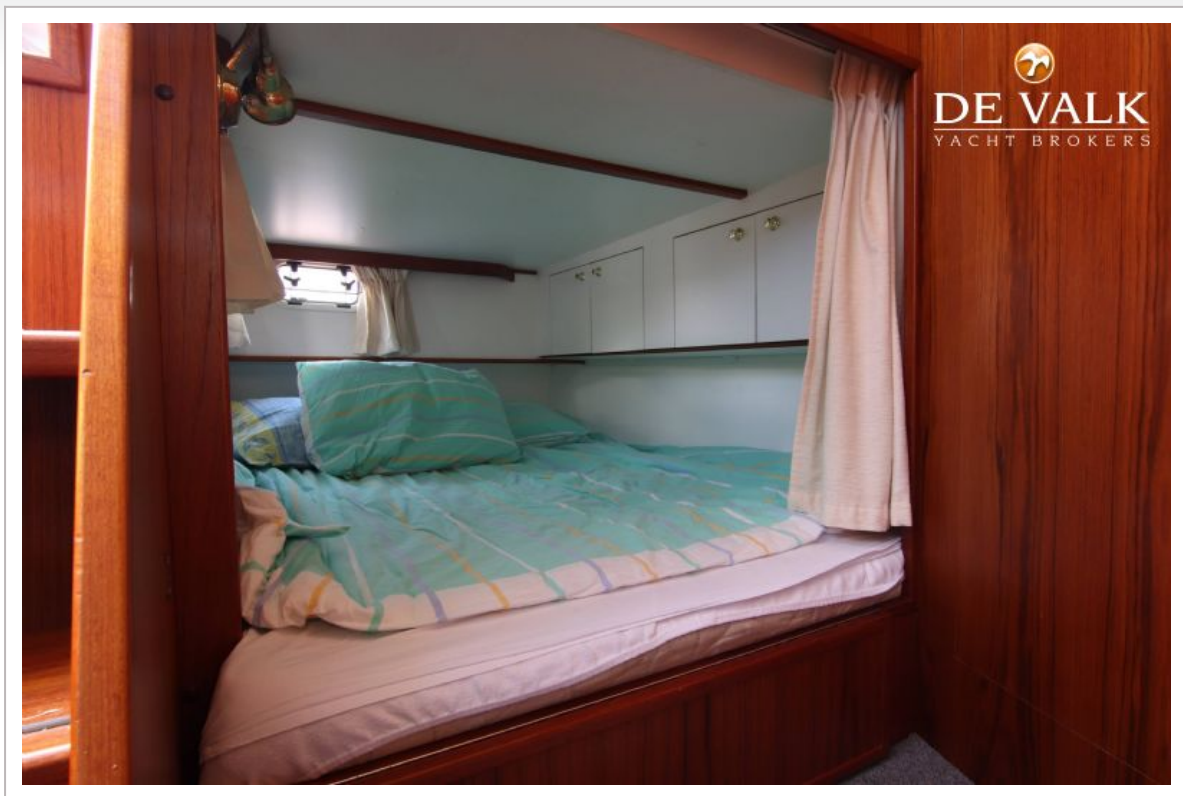


## EXCELLENT 960 EXPRESS





## EXCELLENT 960 EXPRESS



## EXCELLENT 960 EXPRESS

