



DE VALK
YACHT BROKERS



POLARIS ENDURO 1200



DE VALK
YACHT BROKERS

POLARIS ENDURO 1200

BROKER'S COMMENTS

The Polaris Enduro is known for its spacious design. Inside there are two spacious cabins with French beds and a separated saloon from the dinette. This makes her very suitable to live on. She will be auctioned on April 18th 2018 in cooperation with Schipveiling and BVA Autions. For further details and viewing days go to:

<https://www.bva-auctions.com/auction/index/30390> price of the auction EUR. 25.000, offers can be made from April 11th 2018 on the website of BVA.

Koen Mulder

SPECIFICATIONS

Dimensions	12.50 x 3.85 x 1.10 (m)	Builder	Polaris
Built	1990	Cabins	2
Material	Steel	Berths	6
Engine(s)	1 x Volvo Penta TMP 41A diesel	Hp/Kw	150.00 (hp), 110.00 (kw)
Asking price	sold (VAT)	Lying	at sales office

CONTACT

Sales office	De Valk Loosdrecht B.V.	Telephone	+31 (0)35 582 90 30
Address	't Breukeleveense Meentje 6 1231LM Loosdrecht / Wijdmeren NL	E-mail	loosdrecht@devalk.nl

DISCLAIMER

These particulars are given in good faith as supplied but cannot be guaranteed.



POLARIS ENDURO 1200

GENERAL

Model	POLARIS ENDURO 1200
Type	motor yacht
LOA (m)	12,50
LWL (m)	10,40
Beam (m)	3,85
Draft (m)	1,10
Air draft (m)	2,65
Headroom (m)	1,98
Year built	1990
Builder	Polaris
Country	The Netherlands
Displacement (t)	13
CE norm	A
Hull material	steel
Hull colour	white
Hull shape	hard chine
Keel type	box keel
Superstructure material	steel
Deck material	steel
Deck finish	non-skid paint 2013
Superstructure deck finish	paint 2013
Antifouling (year)	2017
Window frame	aluminium
Window material	glass
Insulation	yes
Radar arch	collapsible
Fuel tank (litre)	stainless steel 800
Level indicator (fuel tank)	yes
Freshwater tank (litre)	stainless steel 650
Wheel steering	hydraulic



Inside helm position	yes
Outside helm position	hydraulic

ACCOMMODATION

Cabins	2
Berths	6
Interior	cherry
Floor	carpet
Headroom saloon (m)	1,85
Heating	diesel ducted hot air
Chart table	yes
Aft Cabin	yes
Dinette	yes
Galley	yes
Countertop	stainless steel
Sink	stainless steel
Cooker	calor gas Smev 4 burner
Oven	Riviera 6060
Extractor	Cramer Vent 2000
Gas alarm	Vetus
Fridge	60 L
Freezer	In fridge
Hot water system	220V + engine Eberspächer
Water pressure system	electrical
Kettle	yes
Owners cabin	French bed
Bed length (m)	2
Wardrobe	hanging/drawers/shelves
Bathroom	en suite
Toilet	en suite
Toilet system	manual



Wash basin	in the bathroom
Shower	en suite
Guest cabin 1	French bed
Wardrobe	hanging/drawers/shelves
Bathroom	en suite
Toilet	yes
Shower	yes
Washing machine	Goldkind

MACHINERY

No of engines	1
Make	Volvo Penta
Type	TMP 41A
HP	150,00
kW	110,00
Fuel	diesel
Year installed	1990
Year of overhaul	2008
Maximum speed (kn)	8,00
Cruising speed (kn)	5,00
Consumption (l/hr)	5,00
Engine hours	400 since overhaul
Engine cooling system	freshwater heat exchanger
Drive	shaft
Engine controls	bowden cable
Gearbox	hydraulic
Bowthruster	hydraulic
Propeller type	fixed
Propeller blades	4
Propeller shaft material	stainless steel
Shaft lubrication	water



Generator	dry exhaust
Running hours generator	2
Batteries	yes
Start battery	1
Service battery	4
Battery charger/inverter	Victron Atlas Combi 12V800W
Shorepower	with cable

NAVIGATION

Depth sounder	VDO
VHF	Sailor Sailtron
VHF handheld	Raymarine RAY 101E
Searchlight	yes

EQUIPMENT

Fixed windscreen	yes
Cockpit cover	2014
Bathing platform	Teak
Boarding ladder	stainless steel
Anchor	Danforth
Anchor chain	30 M
Davits	stainless steel
Davits controls	manual
Grab rail (superstructure)	stainless steel
Wiper	yes
Horn	air pressure
Radar reflector	yes





BROKERAGE | CHARTER | BERTHS | FINANCE | INSURANCE | YACHT MANAGEMENT
DE VALK
YACHT BROKERS

**This yacht will be auctioned,
for further details please visit www.devalk.nl**

**Dit schip zal worden geveild,
voor meer informatie gaat u naar www.devalk.nl**

**Dieses Schiff wird versteigert,
für weitere informationen besuchen Sie www.devalk.nl**

WWW.DEVALK.NL

DE VALK
YACHT BROKERS



POLARIS ENDURO 1200



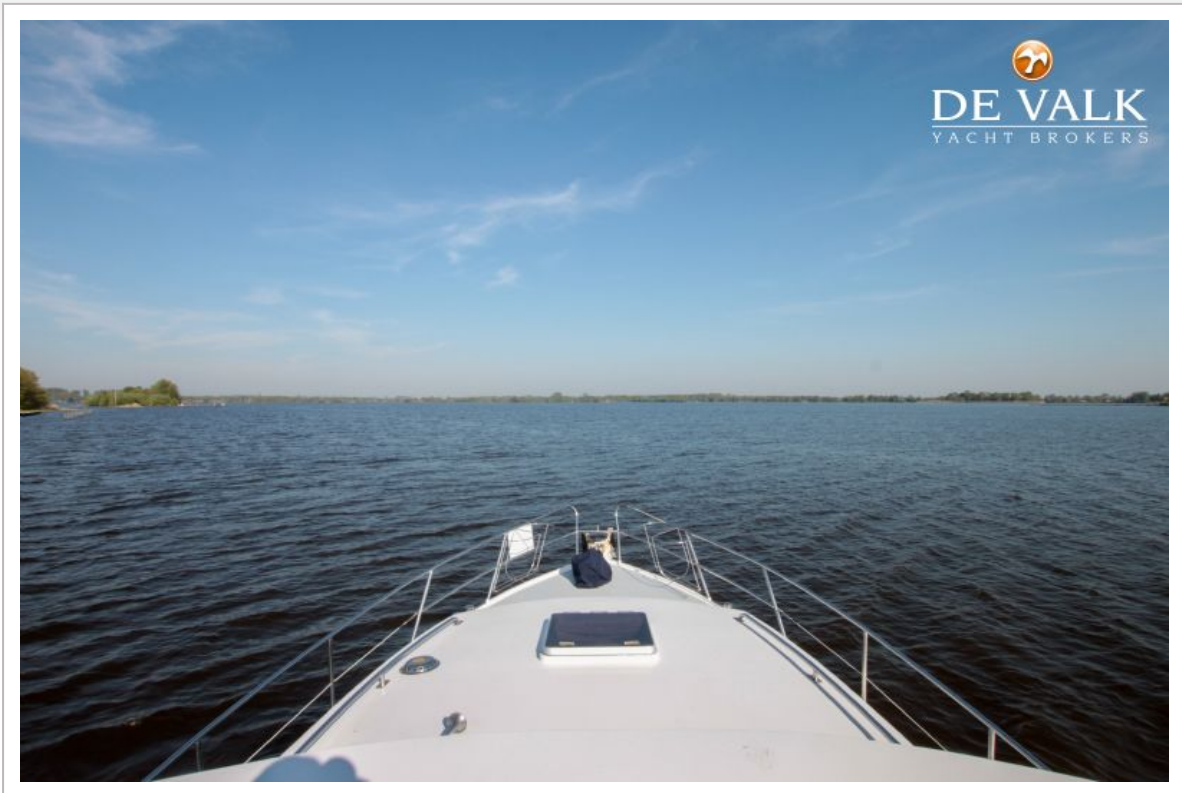
POLARIS ENDURO 1200



POLARIS ENDURO 1200



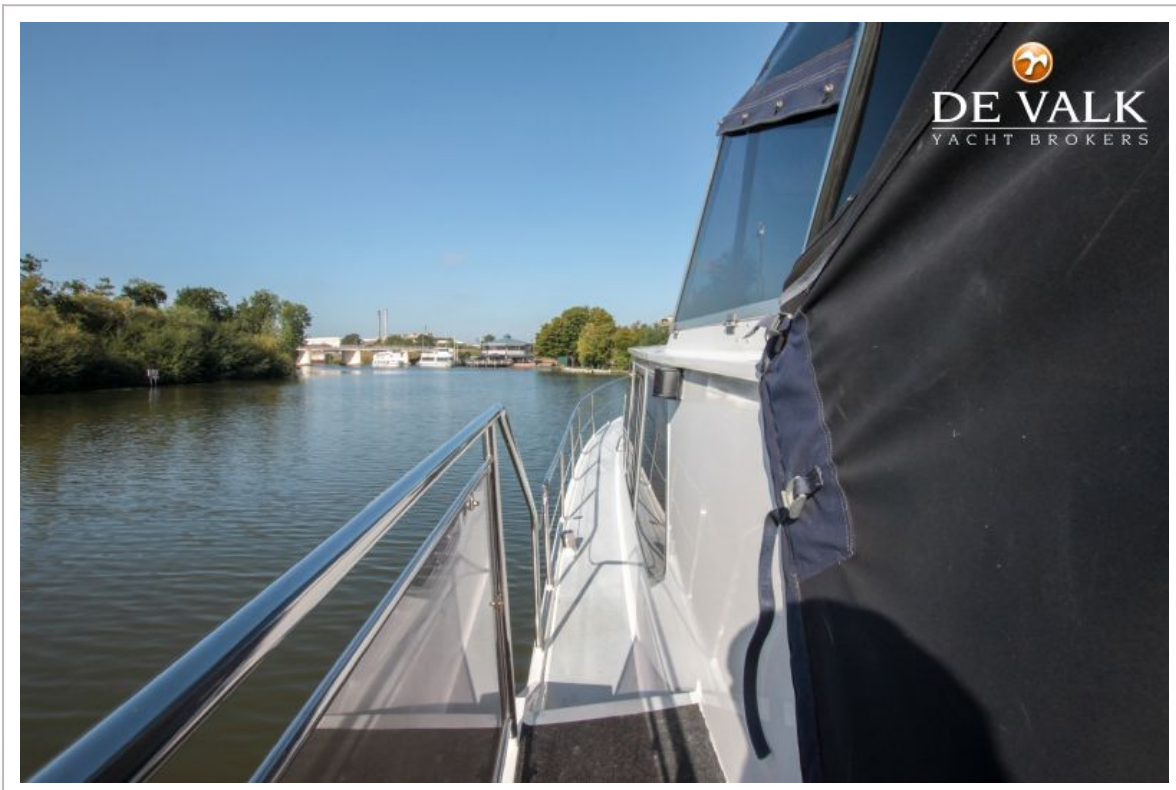
POLARIS ENDURO 1200



POLARIS ENDURO 1200



POLARIS ENDURO 1200



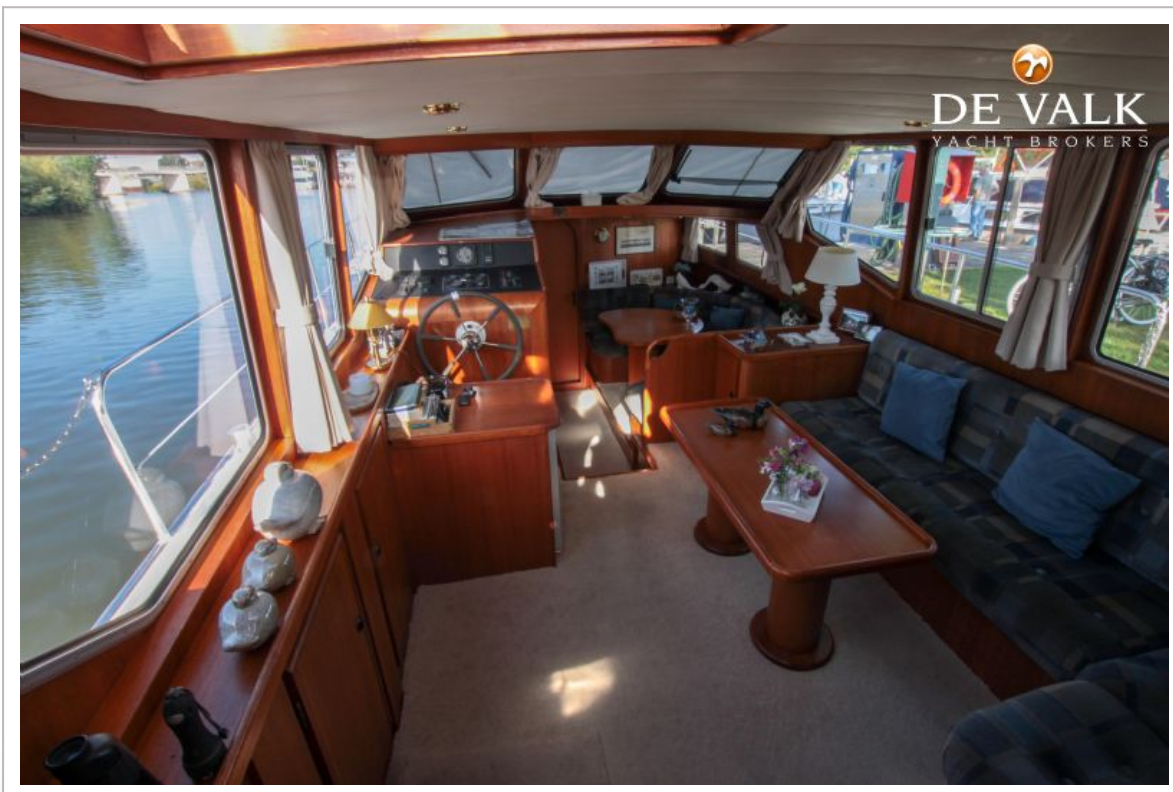
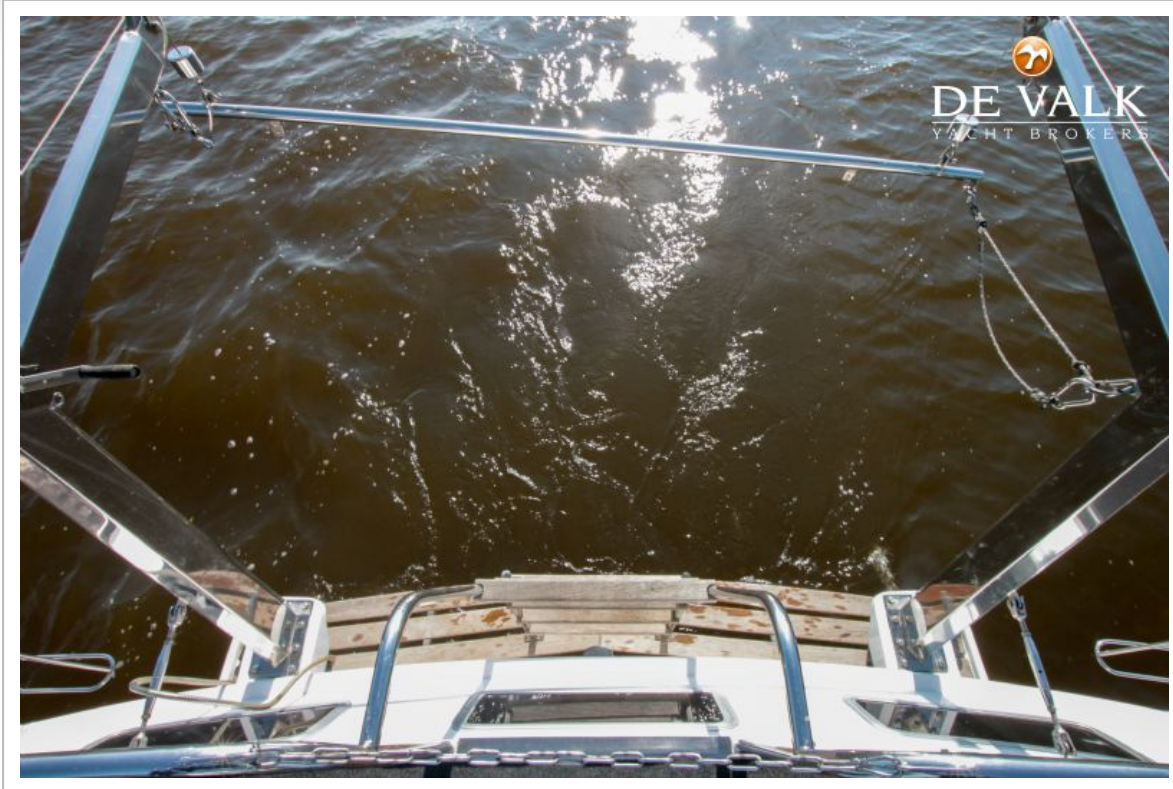
POLARIS ENDURO 1200



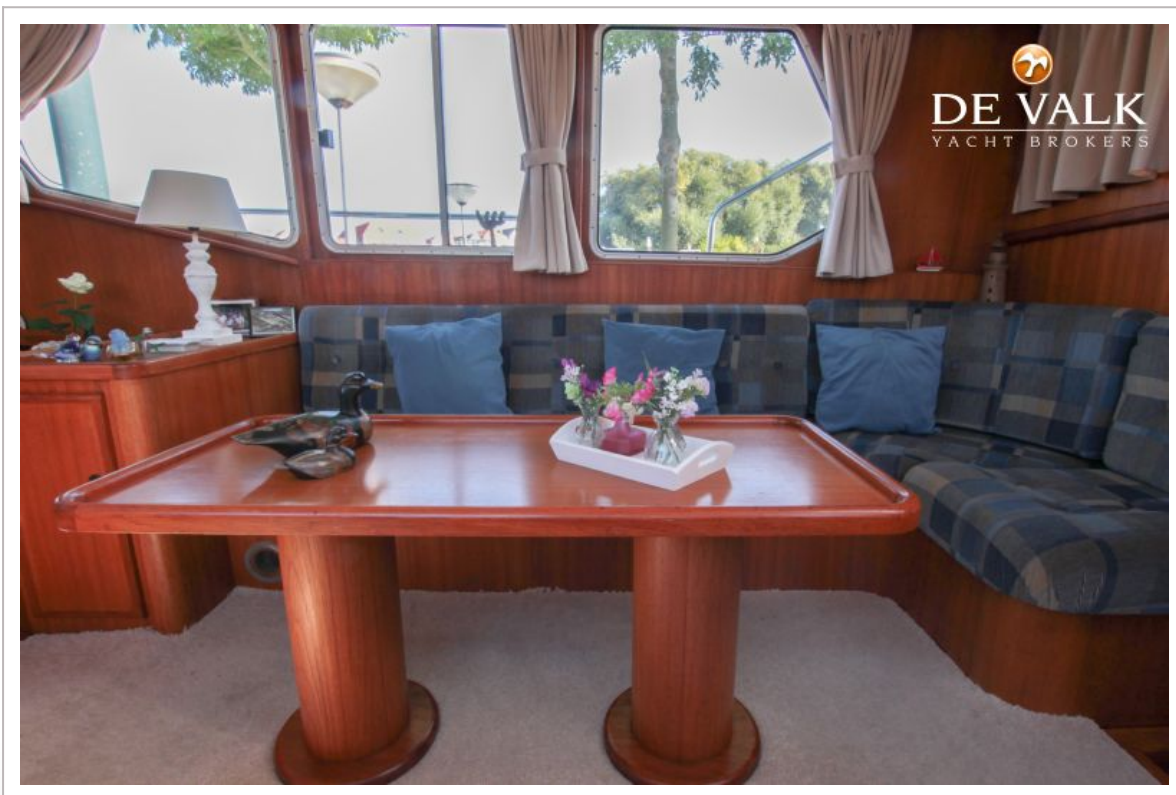
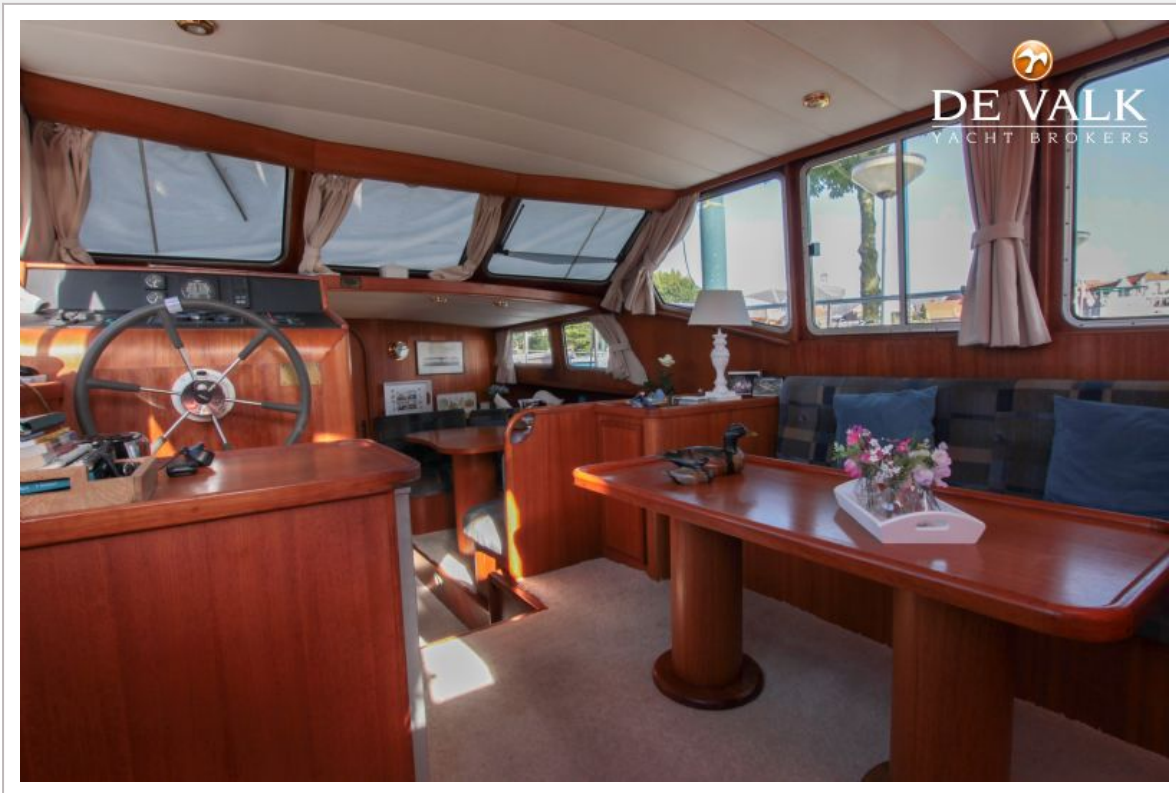
POLARIS ENDURO 1200



POLARIS ENDURO 1200



POLARIS ENDURO 1200



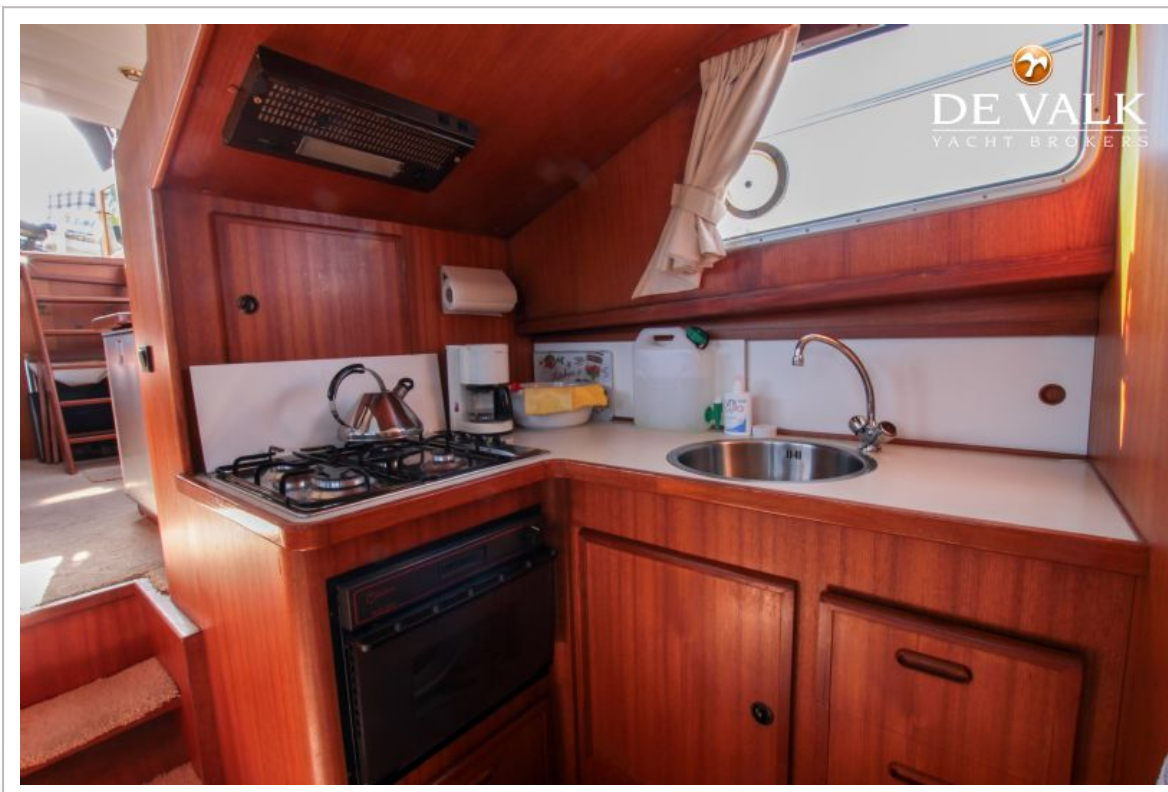
POLARIS ENDURO 1200



POLARIS ENDURO 1200



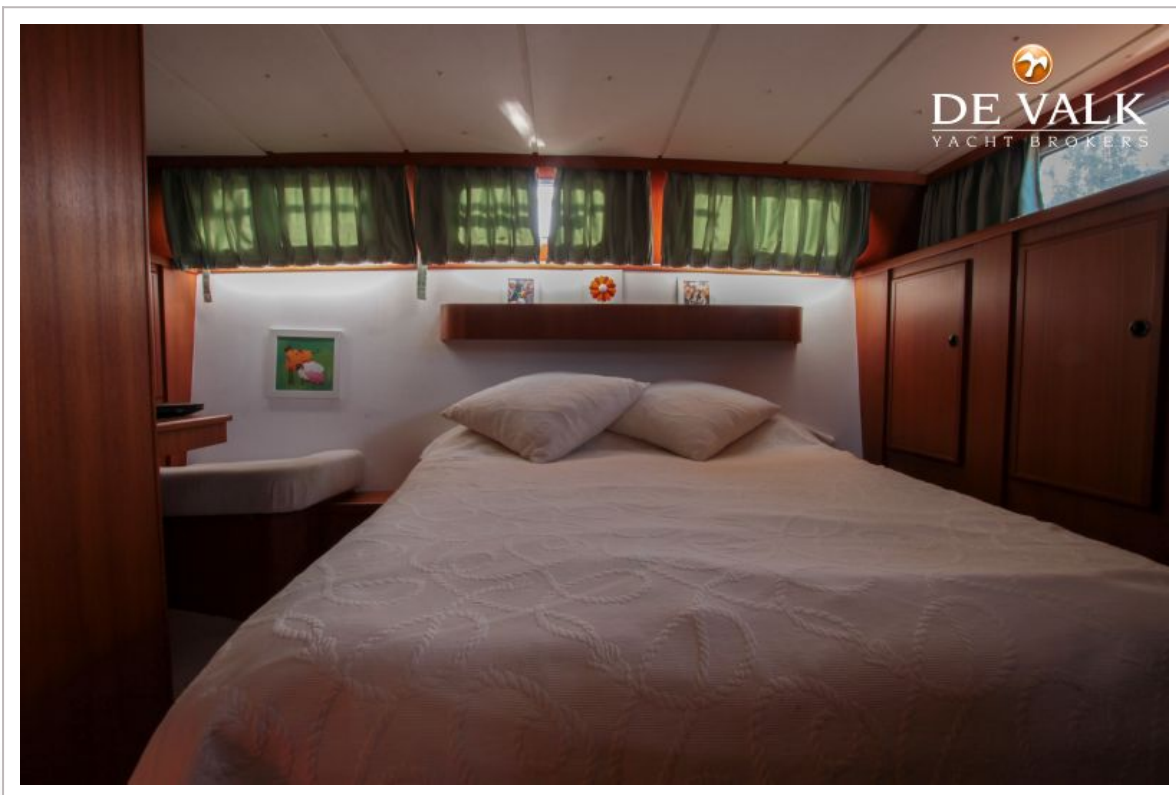
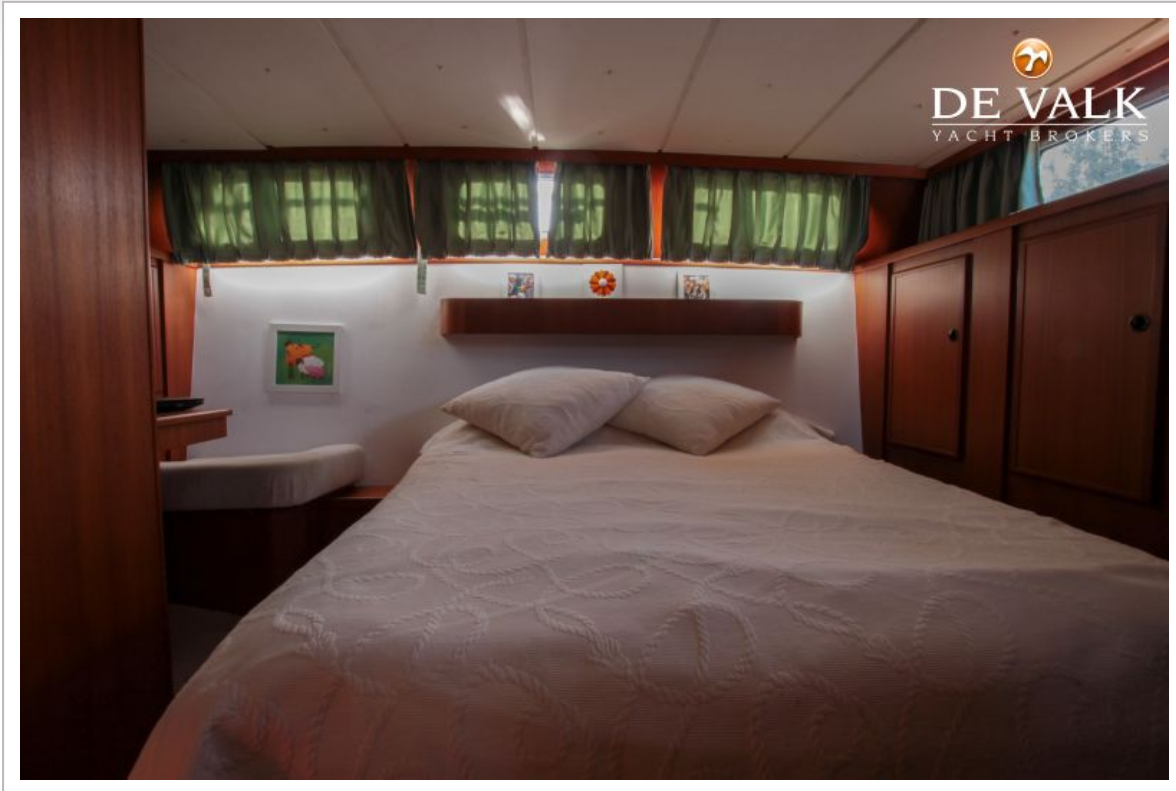
POLARIS ENDURO 1200



POLARIS ENDURO 1200



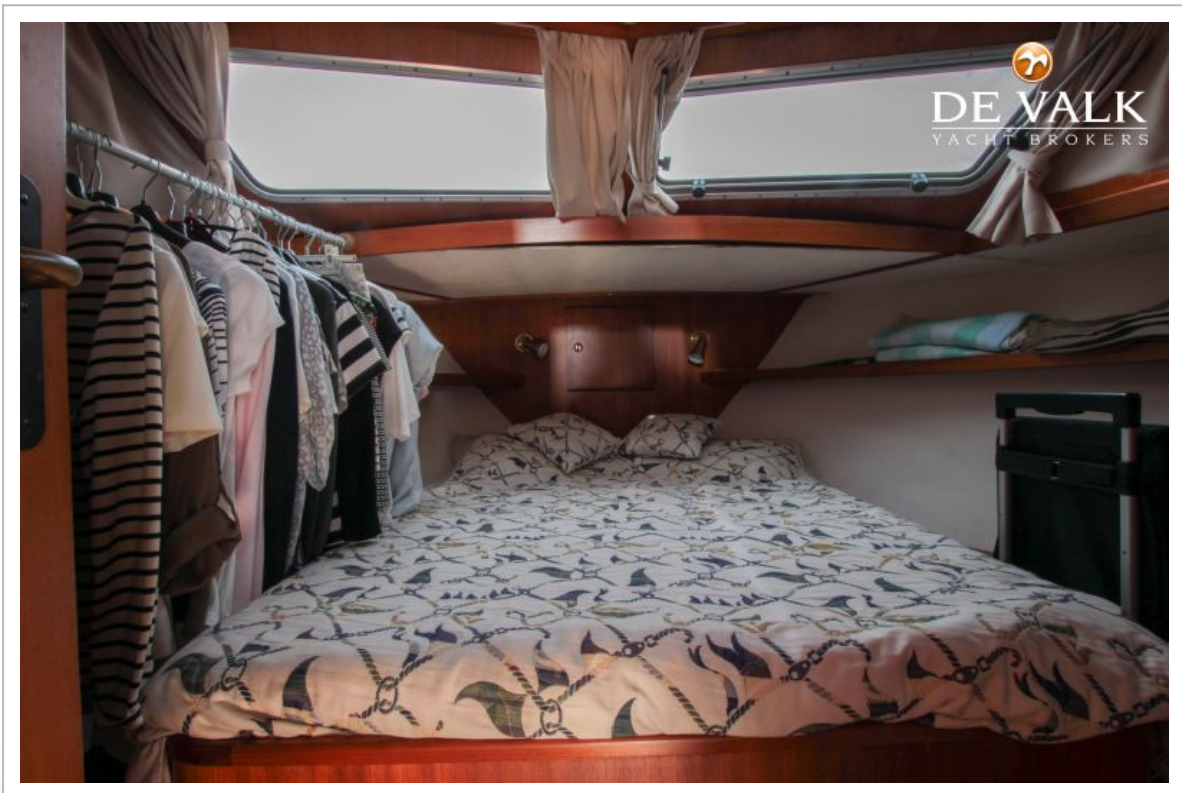
POLARIS ENDURO 1200



POLARIS ENDURO 1200



POLARIS ENDURO 1200



POLARIS ENDURO 1200

