



CASCARUDA 1450

CASCARUDA 1450

BROKER'S COMMENTS

The Cascaruda 14.50 "Zoeff" is built at the Cascaruda yard in the Netherlands and is designed by Simon Groonheim. Due to her four cabin layout, Vetus bow- and stern thruster, electrical windlass and Eberspracher heating, "Zoeff" is very comfortable for longer trips and longer stays on board. This Cascaruda 14.50 is equipped with two Volvo Penta 300 HP diesel engines and with her low air draft of 2.80 M makes her the perfect motor yacht to explore the European waterways.

Mark Hesselmans

SPECIFICATIONS

Dimensions	14.80 x 4.45 x 1.20 (m)	Builder	Cascaruda B.V.
Built	1986	Cabins	4
Material	Steel	Berths	9
Engine(s)	2 x Volvo Penta TAMD 61A / MG 5 diesel	Hp/Kw	2 x 320.00 (hp), 235.20 (kw)
Asking price	sold (VAT)	Lying	at sales office

CONTACT

Sales office	De Valk Loosdrecht B.V.	Telephone	+31 (0)35 582 90 30
Address	't Breukeleveense Meentje 6 1231LM Loosdrecht / Wijdmeren NL	E-mail	loosdrecht@devalk.nl

DISCLAIMER

These particulars are given in good faith as supplied but cannot be guaranteed.



GENERAL

Model	CASCARUDA 1450
Type	motor yacht
LOA (m)	14,80
Beam (m)	4,45
Draft (m)	1,20
Air draft (m)	2,80
Headroom (m)	2,00
Year built	1986
Launched	1987
Builder	Cascaruda B.V.
Country	The Netherlands
Designer	Simon Groonheim
CE norm	NA
Hull material	steel
Hull colour	blue
Hull shape	hard chine
Superstructure material	steel
Rubbing strake	stainless steel
Deck material	steel
Deck finish	non-skid paint
Superstructure deck finish	non-skid paint
Window frame	aluminium
Window material	glass
Portholes	aluminium
Radar arch	collapsible
Fuel tank (litre)	2000
Level indicator (fuel tank)	yes
Freshwater tank (litre)	1000
Blackwater tank (litre)	800
Wheel steering	hydraulic



Inside helm position	yes
Outside helm position	yes

ACCOMMODATION

Cabins	4
Berths	9
Interior	teak
Floor	vinyl
Aft deck	yes
Saloon	yes
Headroom saloon (m)	2
Heating	diesel ducted hot air Eberspracher
Aft Cabin	yes
Dinette to convert into berth	yes
Opening door to aft deck	yes
Galley	yes
Countertop	
Sink	stainless steel
Cooker	calor gas 4x burners
Fridge	2x Electrolux
Hot water system	220V + engine
Water pressure system	electrical
Owners cabin	double bed
Bed length (m)	2
Wardrobe	hanging and shelves
Bathroom	shared
Toilet	Vetus
Toilet system	electric
Wash basin	in the bathroom
Shower	shared
Guest cabin 1	v-bed



Bed length (m)	2
Wardrobe	hanging and shelves
Toilet	electric
Toilet system	electric Vetus
Wash basin	at the toilet
Guest cabin 2	single bed
Bed length (m)	2
Wardrobe	hanging and shelves
Guest cabin 3	bunk bed
Bed length (m)	2
Wardrobe	hanging and shelves

MACHINERY

No of engines	2
Make	Volvo Penta
Type	TAMD 61A / MG 5
HP	320
kW	235,20
Fuel	diesel
Maximum speed (kn)	13
Cruising speed (kn)	8
Consumption (l/hr)	20
Engine hours	4853
Drive	shaft
Bowthruster	electric Vetus 160 Kgf
Sternthruster	Vetus 160 Kgf
Exhaust	watercooled
Propeller type	fixed
Electric bilge pump	yes
Electrical installation	yes
Batteries	yes



Inverter	Power Inverter 2500W 12V
Solar panel	yes
Shorepower	with cable

NAVIGATION

Compass	VDO
Depth sounder	VDO
VHF	Sailor Compact VHF RT2048

EQUIPMENT

Sun awning	yes
Cockpit table	yes
Cockpit chairs	yes
Bathing platform	yes
Boarding ladder	stainless steel
Deck shower	yes
Anchor	yes
Anchor chain	yes
Windlass	electrical
Deck wash	2X
Davits	stainless steel
Davits controls	manual
Sea railing	stainless steel
Grab rail (superstructure)	yes
Railing side opening gates	yes
Wiper	yes
Horn	electric
TV	Salora
Radio-cd player	Pioneer DEH-1500UB



CASCARUDA 1450



CASCARUDA 1450



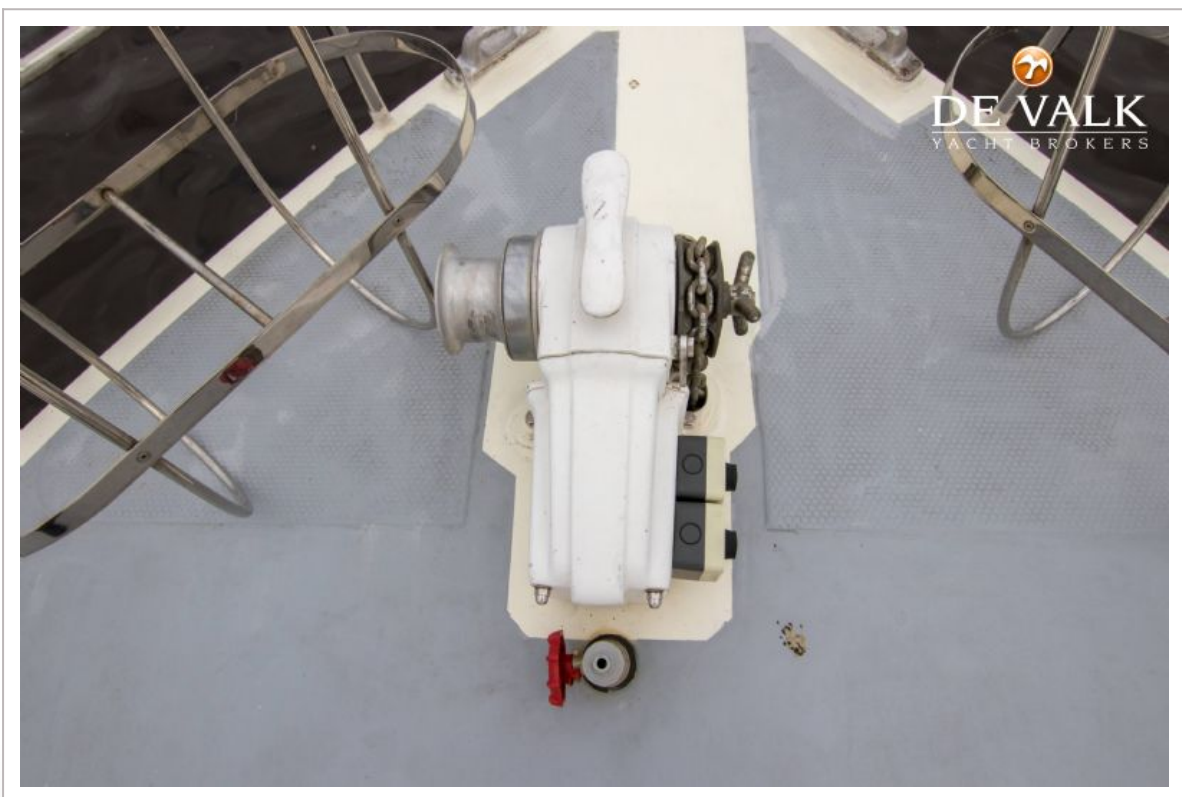
CASCARUDA 1450



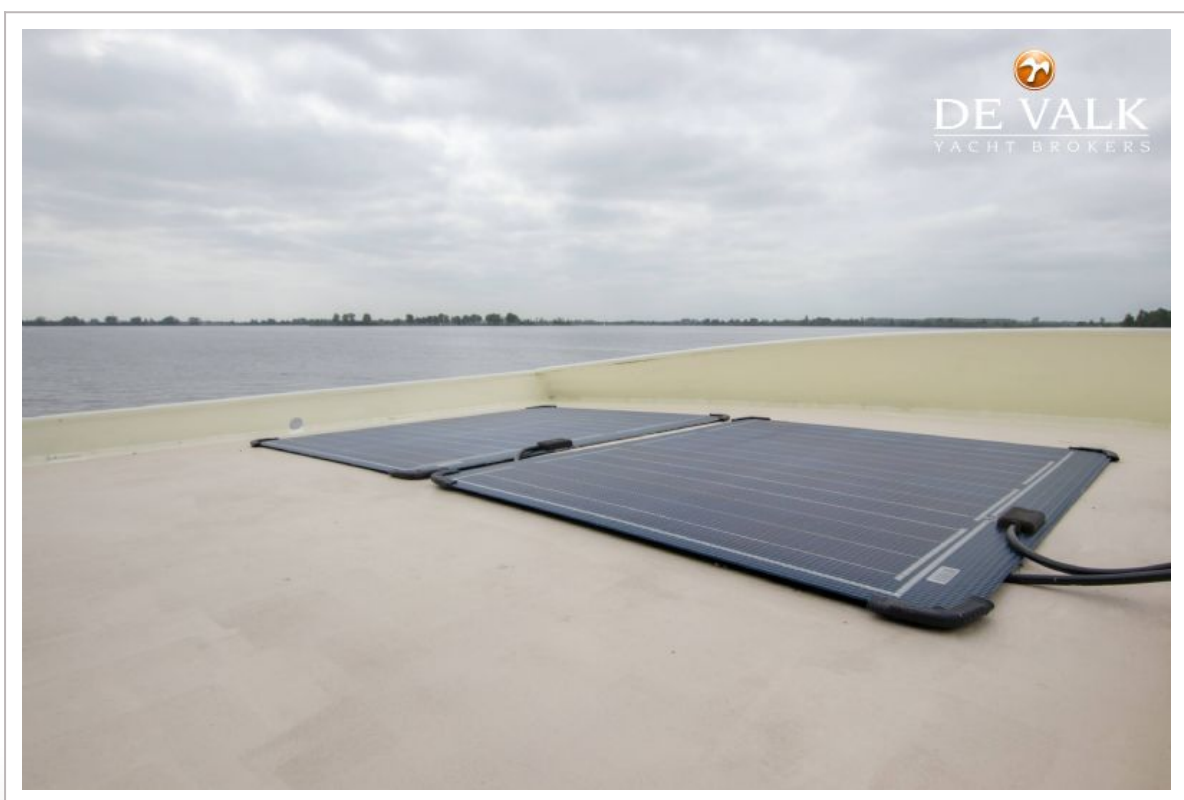
CASCARUDA 1450



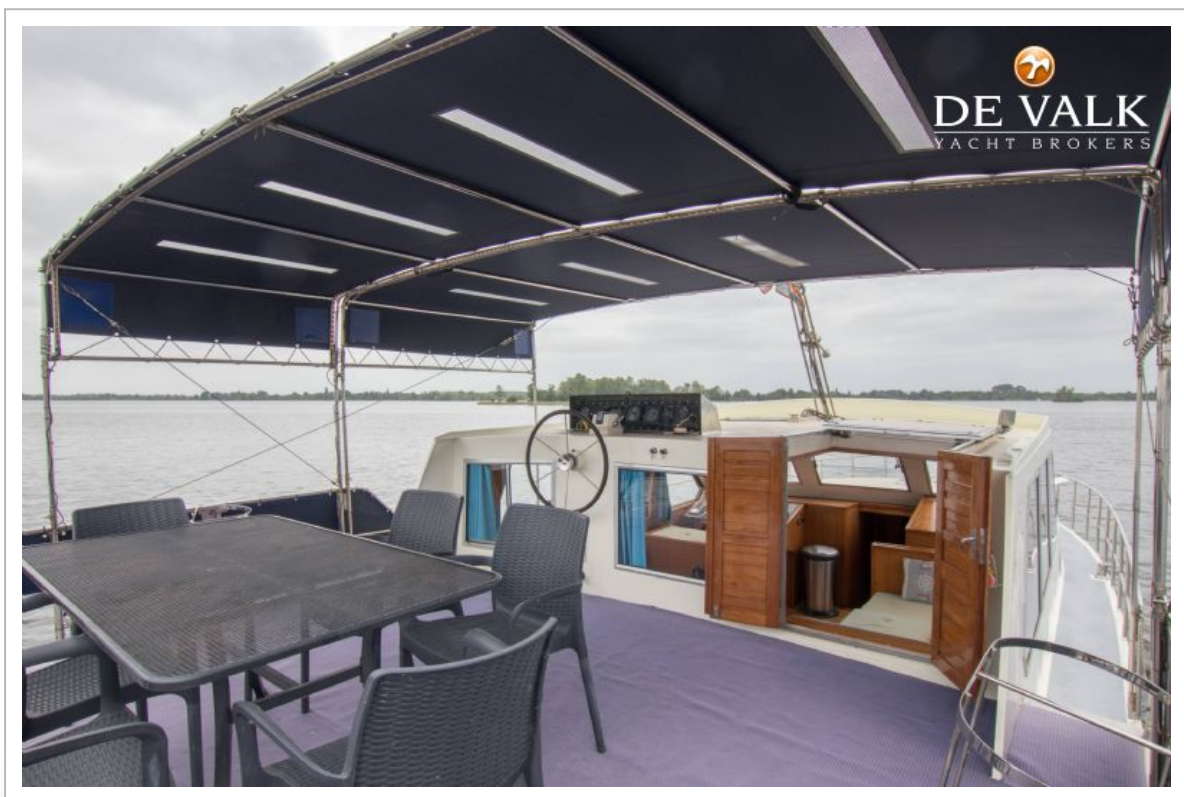
CASCARUDA 1450



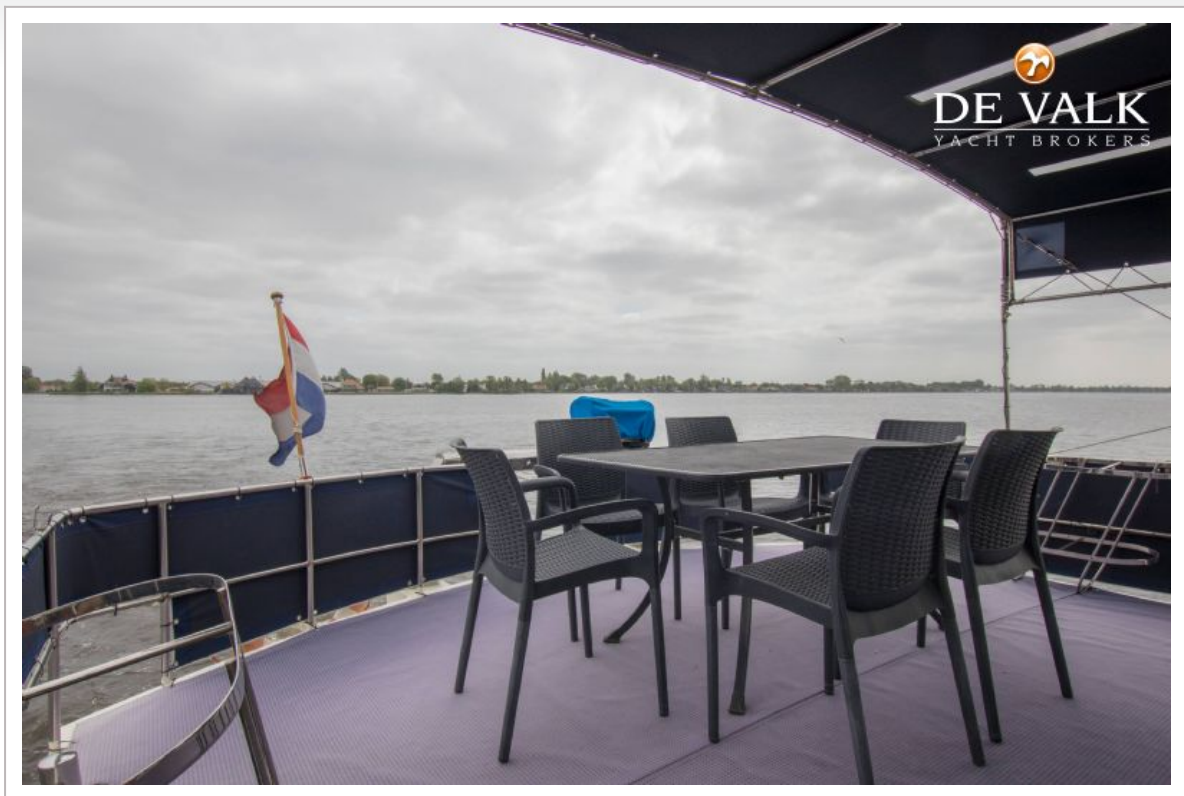
CASCARUDA 1450



CASCARUDA 1450



CASCARUDA 1450



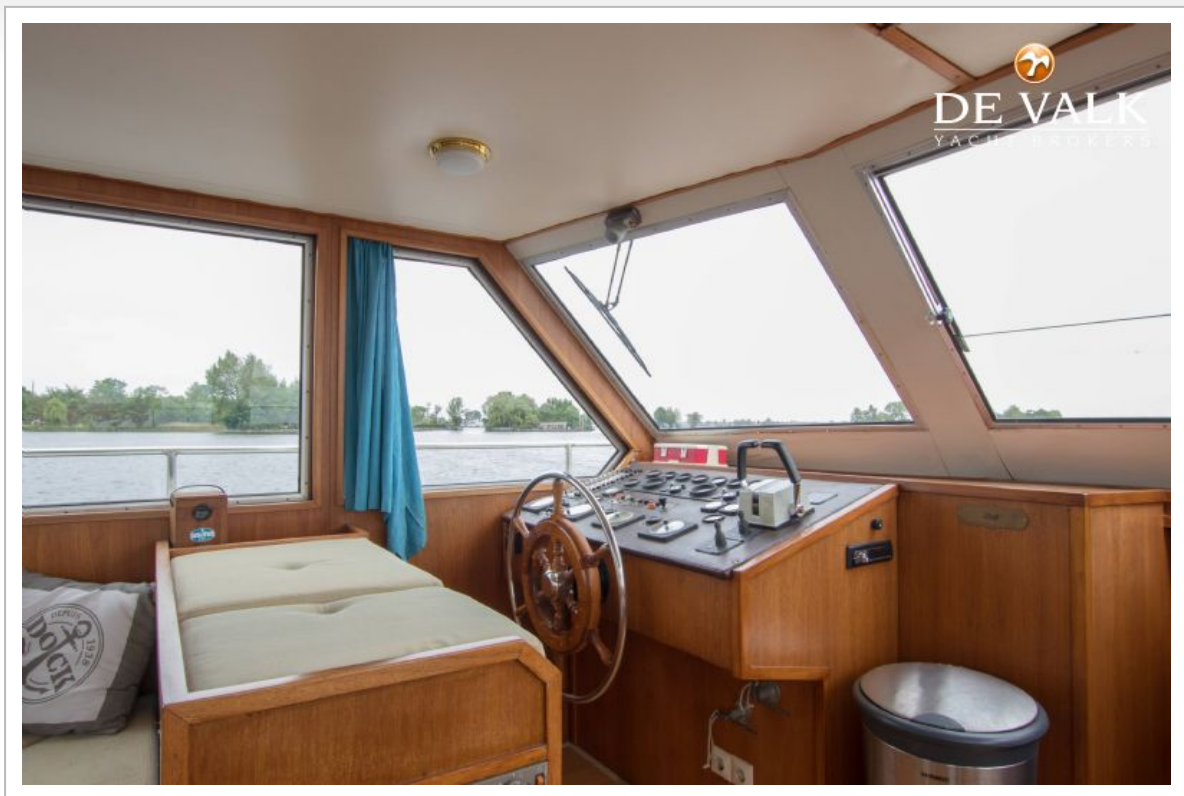
CASCARUDA 1450



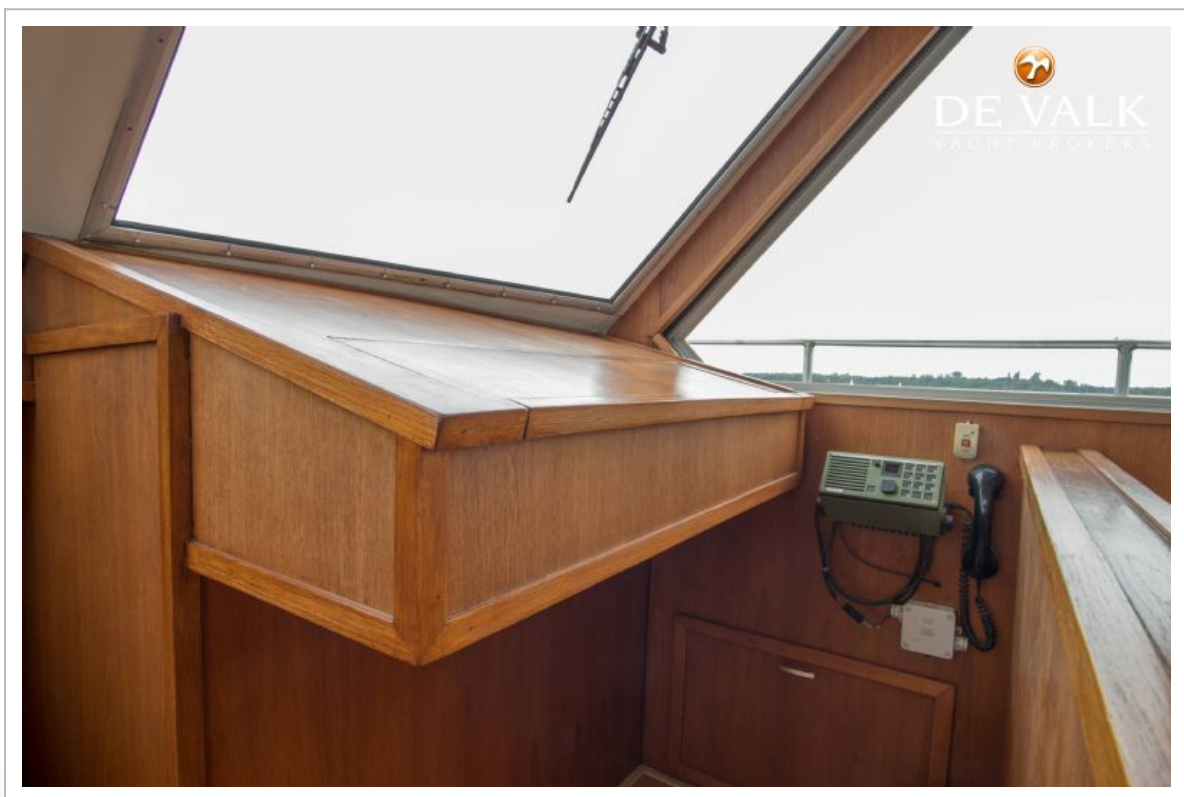
CASCARUDA 1450



CASCARUDA 1450



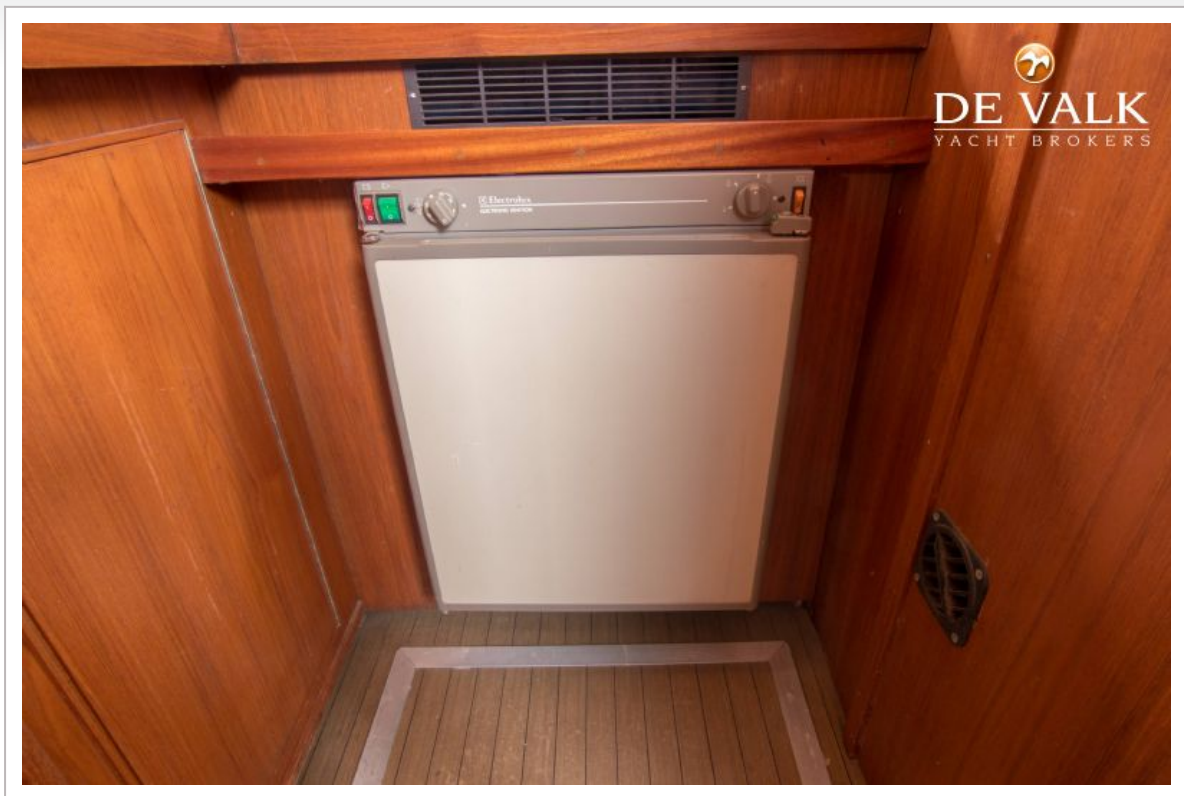
CASCARUDA 1450



CASCARUDA 1450



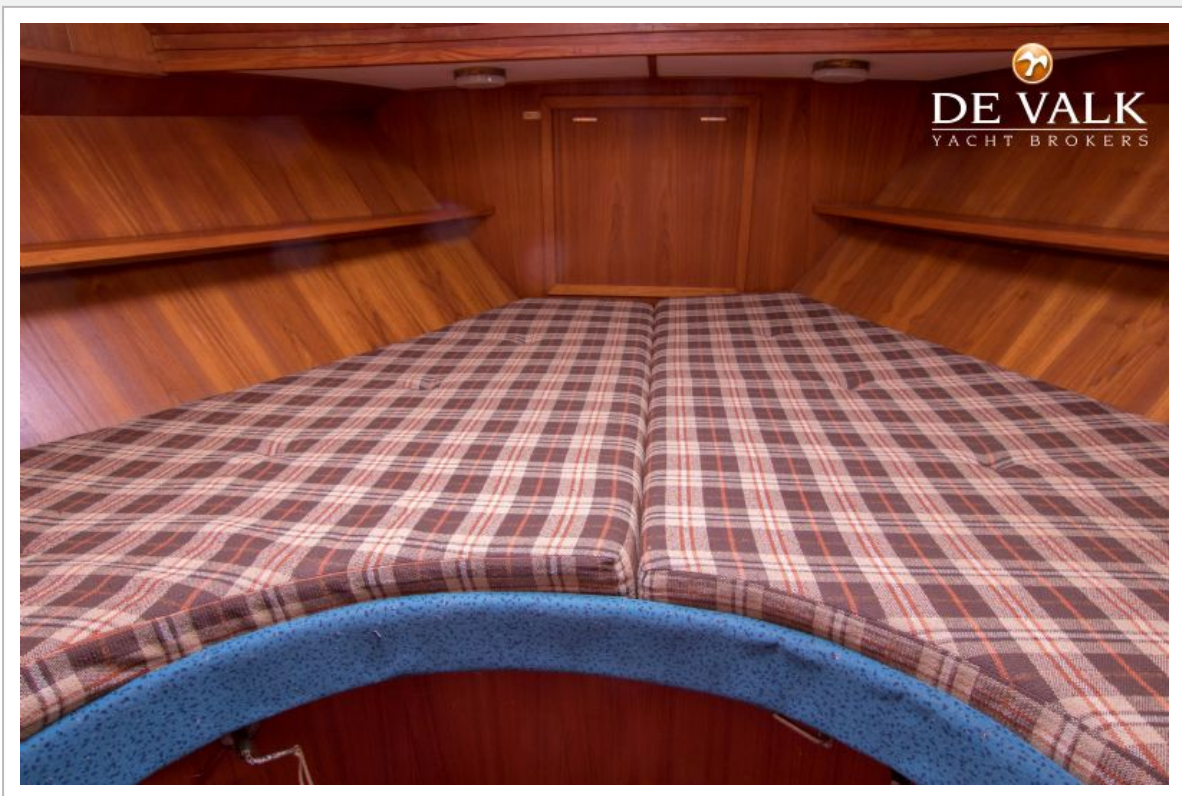
CASCARUDA 1450



CASCARUDA 1450



CASCARUDA 1450



CASCARUDA 1450



CASCARUDA 1450

