



## VALKVLET 1060



# VALKVLET 1060

## BROKER'S COMMENTS

The Valkvlet 10.60 OK, named 'Noorderlicht', is offered in a good condition. This Valkvlet is equipped with a reliable Ford 105 hp diesel engine and due to her electric bow- and stern thruster very easy to handle. The saloon shows a headway of 1,98 m. measured from the teak finished floor till the large sliding roof. By using the electric mast lowering gear, the headway shows only 2,45 m.. No doubt the Valkvlet 10.60 OK 'Noorderlicht' is the perfect inland cruiser, viewing is recommended. You are very welcome to visit her.

*Peter van Diggele*

## SPECIFICATIONS

<b>Dimensions</b>	10.60 x 3.45 x 1.00 (m)	<b>Builder</b>	P. Valk-Franeker
<b>Built</b>	1993	<b>Cabins</b>	1
<b>Material</b>	Steel	<b>Berths</b>	4
<b>Engine(s)</b>	1 x Ford 2723 E diesel	<b>Hp/Kw</b>	105.00 (hp), 77.18 (kw)
<b>Asking price</b>	sold (VAT )	<b>Lying</b>	at sales office

## CONTACT

<b>Sales office</b>	De Valk Loosdrecht B.V.	<b>Telephone</b>	+31 (0)35 582 90 30
<b>Address</b>	't Breukeleveense Meentje 6 1231LM Loosdrecht / Wijdmeren NL	<b>E-mail</b>	loosdrecht@devalk.nl

## DISCLAIMER

These particulars are given in good faith as supplied but cannot be guaranteed.



## GENERAL

Model	VALKVLET 1060
Type	motor yacht
LOA (m)	10,60
Beam (m)	3,45
Draft (m)	1,00
Air draft (m)	2,45
Headroom (m)	1,98
Year built	1993
Builder	P. Valk-Franecker
Country	The Netherlands
Designer	Th. Gillissen
Displacement (t)	11
Hull material	steel
Hull colour	blue
Hull shape	round-bilged
Superstructure material	steel
Rubbing strake	fender rope
Deck material	steel
Deck finish	teak
Cockpit deck finish	teak
Dorades	stainless steel
Window frame	aluminium
Window material	glass Hora
Deckhatch	yes
Portholes	aluminium
Mast can be lowered	electric
Fuel tank (litre)	450
Freshwater tank (litre)	400
Wheel steering	hydraulic
Inside helm position	yes



Emergency tiller	yes
Extra info	saloon:large hatch and opening windows in front

## ACCOMMODATION

Cabins	1
Berths	4
Interior	mahogany
Floor	teak and holly
Open cockpit	yes
Saloon	yes
Headroom saloon (m)	1,98
Sliding roof	manual
Heating	Eberspacher D3L
Opening door to cockpit	yes
Galley	yes
Countertop	wood
Sink	stainless steel
Cooker	calor gas ENO
Oven	ENO
Fridge	yes
Hot water system	geyser on Calor Gas
Water pressure system	electrical
Owners cabin	v-bed
Bed length (m)	2,00
Wardrobe	shelves
Bathroom	en suite
Toilet	en suite
Toilet system	manual
Wash basin	in the bathroom
Shower	en suite



## MACHINERY

No of engines	1
Make	Ford
Type	2723 E
HP	105,00
kW	77,18
Fuel	diesel
Maximum speed (kn)	7
Consumption (l/hr)	5
Engine hours	3200
Engine cooling system	freshwater heat exchanger
Drive	shaft
Engine controls	bowden cable
Gearbox	hydraulic Newage
Bowthruster	electric
Sternthruster	electric
Exhaust	watercooled
Propeller shaft material	stainless steel
Shaft lubrication	grease Automatic
Electric bilge pump	yes
Electrical installation	12/220 Volt
Battery charger/inverter	Victron Multi Plus 24/1600/40
Shorepower	yes
Extra info	double filters at fuel system

## NAVIGATION

Electric compass	Logic
Depth sounder	Logic
Log	Logic
VHF	Shipmate RS 8110
Rudder angle indicator	VDO



## EQUIPMENT

Cockpit cover	yes
Gangway	yes
Anchor	yes
Anchor chain	yes
Windlass	electrical Lofrans
Davits	stainless steel
Davits controls	manual
Sea railing	wire
Grab rail (superstructure)	wood
Wiper	yes



# VALKVLET 1060



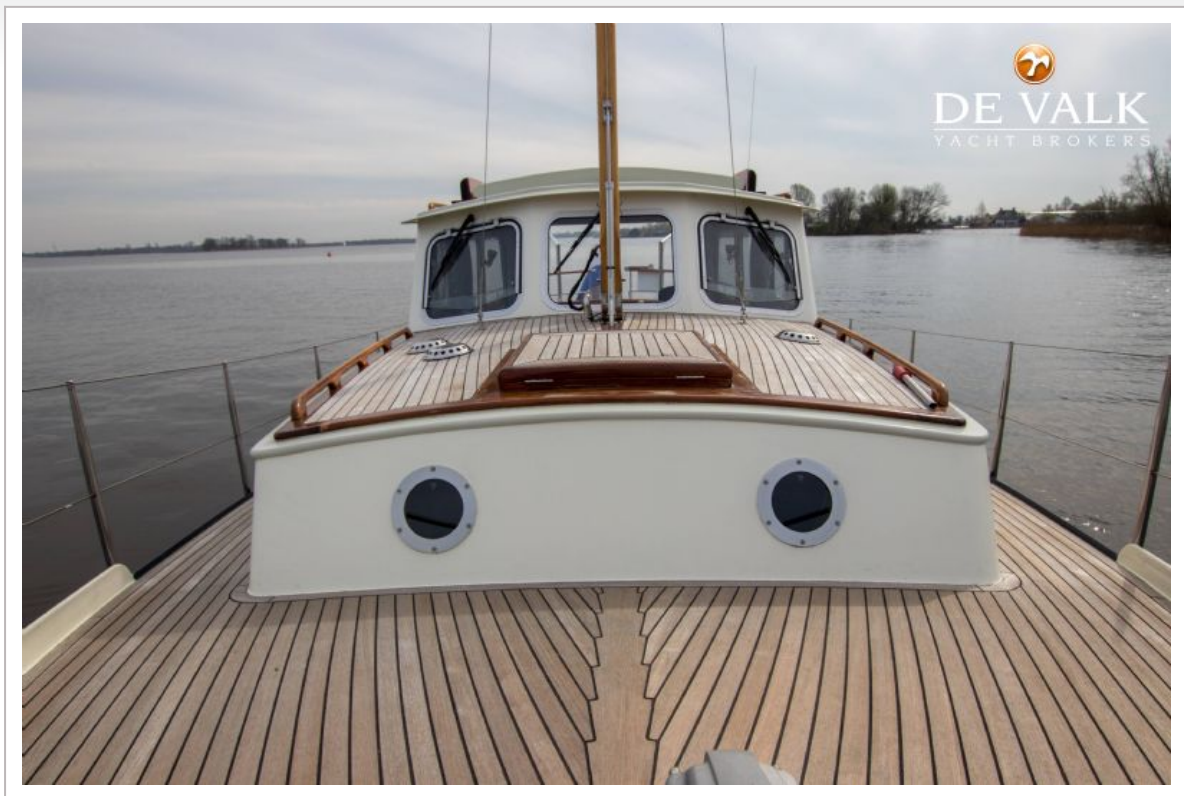




# VALKVLET 1060



# VALKVLET 1060





# VALKVLET 1060



# VALKVLET 1060





# VALKVLET 1060



# VALKVLET 1060





# VALKVLET 1060

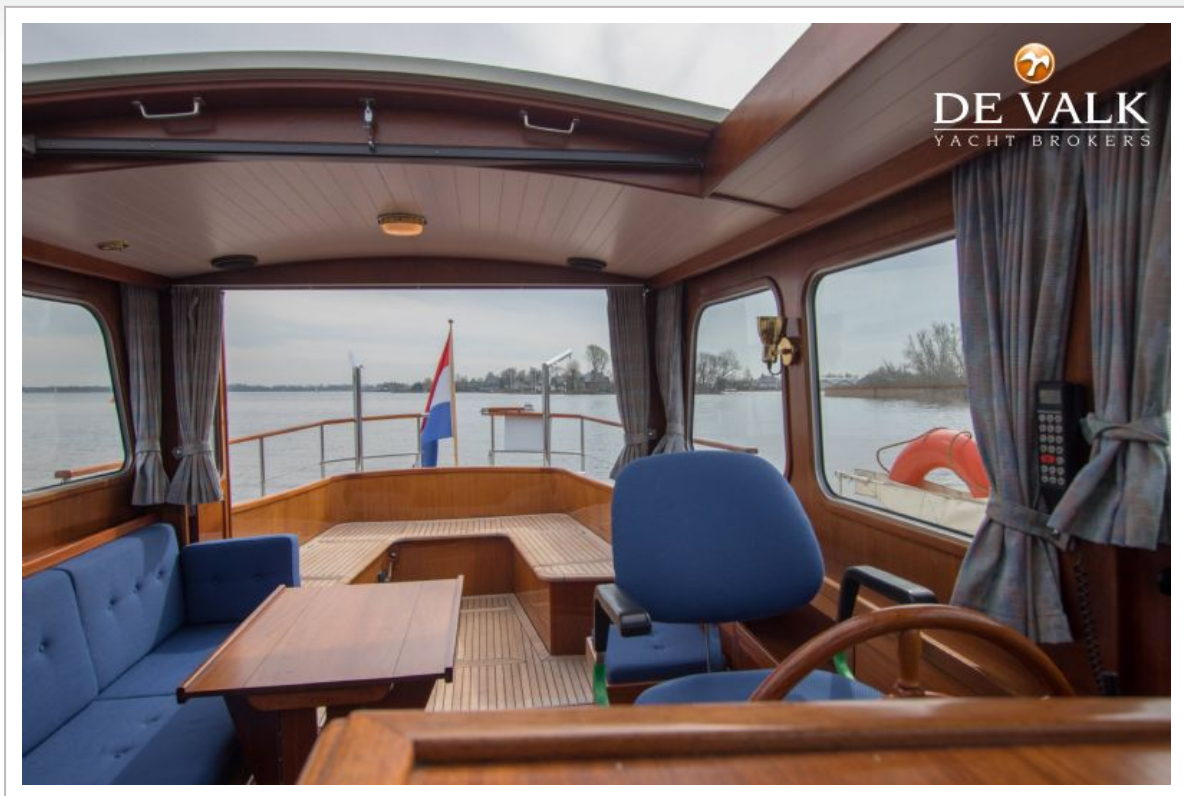


# VALKVLET 1060

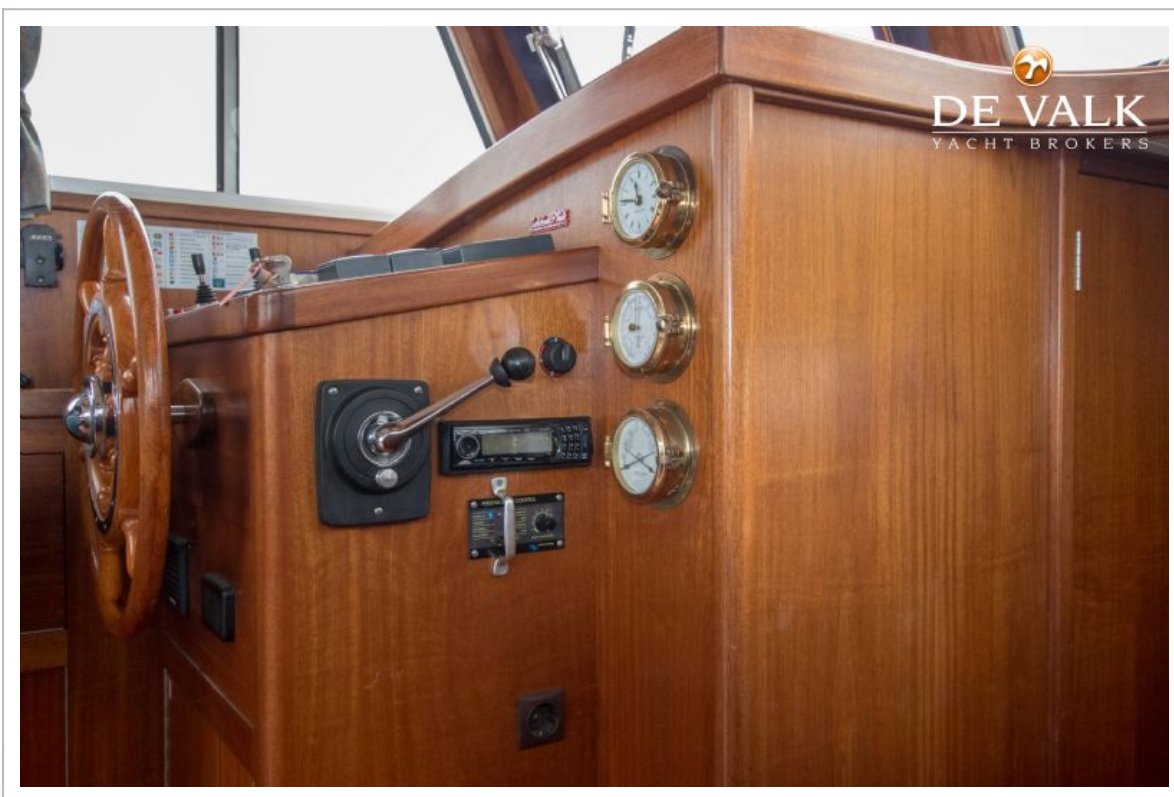




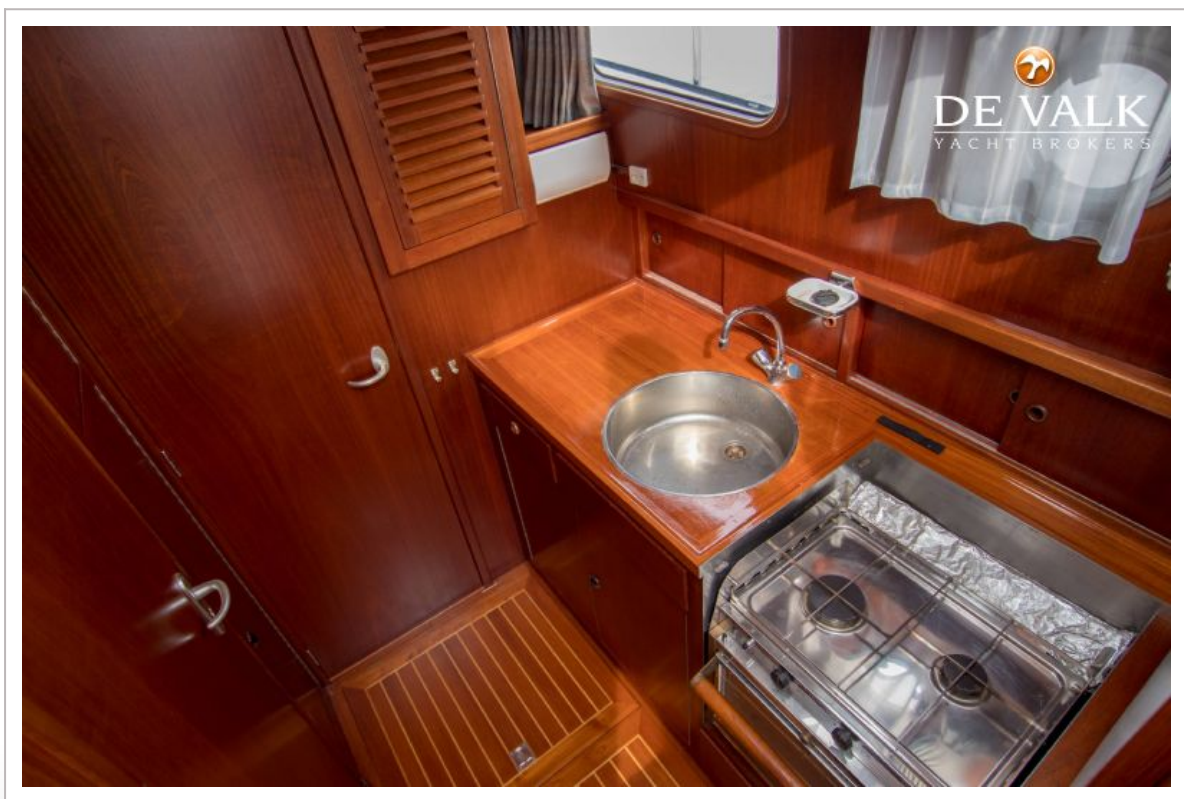
# VALKVLET 1060



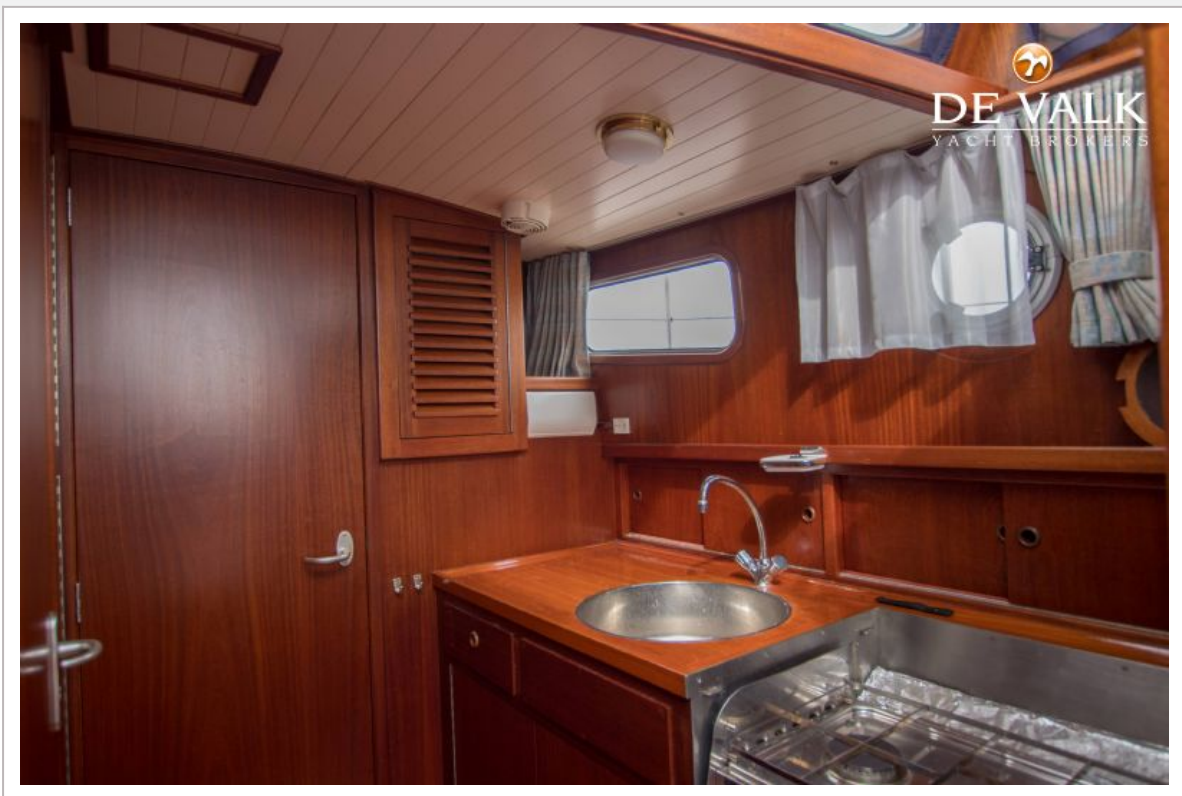
# VALKVLET 1060







# VALKVLET 1060





# VALKVLET 1060



# VALKVLET 1060



