



DE VALK
YACHT BROKERS



SUCCES 125 ULTRA



DE VALK
YACHT BROKERS

SUCCES 125 ULTRA

BROKER'S COMMENTS

The Succes 125 Ultra Sport, offered by the first owner, is the modern motor yacht you look for when cruising the inland and coastal waters. The owner had the 125 specialized by the yard to make sure she is safe, comfortable and independent of shore facilities for a while. Due to the Succes her air draft, strong engine and double diesel and water filters, she is perfectly suitable for the French canals. The whole maintenance history can be seen and delivered by the owner. The Succes 125 Ultra Sport is a must see vessel and can be viewed in our covered marina.

Koen Mulder

SPECIFICATIONS

Dimensions	12.50 x 4.00 x 1.15 (m)	Builder	Succes Jachten Marknesse
Built	2003	Cabins	2
Material	Steel	Berths	4
Engine(s)	1 x Iveco 8060 SM 21.10 diesel	Hp/Kw	210.00 (hp), 154.35 (kw)
Asking price	sold (VAT)	Lying	at sales office

CONTACT

Sales office	De Valk Loosdrecht B.V.	Telephone	+31 (0)35 582 90 30
Address	't Breukeleveense Meentje 6 1231LM Loosdrecht / Wijdmeren NL	E-mail	loosdrecht@devalk.nl

DISCLAIMER

These particulars are given in good faith as supplied but cannot be guaranteed.



SUCCES 125 ULTRA

GENERAL

Model	SUCCES 125 ULTRA
Type	motor yacht
LOA (m)	12,50
LWL (m)	11,50
Beam (m)	4,00
Draft (m)	1,15
Air draft (m)	4,00
Air draft min (m)	2,90
Year built	2003
Builder	Succes Jachten Marknesse
Country	The Netherlands
Designer	Succes Jachten
Displacement (t)	13
CE norm	C
Hull material	steel
Hull colour	white
Hull shape	hard chine
Superstructure material	steel
Rubbing strake	plastic
Deck material	steel
Deck finish	non-skid paint
Cockpit deck finish	cork Marinedeck 2000
Antifouling (year)	2018
Window frame	aluminium
Window material	tempered glass
Portholes	aluminium
Insulation	glasswool
Radar arch	collapsible Manual
Fuel tank (litre)	steel 800
Level indicator (fuel tank)	yes



Freshwater tank (litre)	polyethylene 750
Level indicator (freshwater)	yes
Blackwater tank (litre)	steel 300
Blackwater tank extraction	
Outside helm position	hydraulic

ACCOMMODATION

Cabins	2
Berths	4
Interior	teak
Floor	teak Carpet
Aft deck	yes
Saloon	yes
Heating	diesel ducted hot air Webasto 5Kw, 2014 new
Aft Cabin	yes
Dinette	yes
Dinette to convert into berth	yes
Opening door to cockpit	yes
Galley	yes
Countertop	Duropol
Sink	stainless steel
Cooker	ceramic Electrolux
Extractor	Electrolux
Microwave/oven combi	Samsung
Fridge	2x (65 & 90 Liter)
Freezer	2x compartment in fridge
Hot water system	220V + engine 65 L. boiler
Water pressure system	electrical
Coffee maker	yes
Owners cabin	French bed
Bed length (m)	2



SUCCES 125 ULTRA

Wardrobe	hanging and shelves
Bathroom	en suite
Toilet	en suite
Toilet system	manual 12V prepared
Wash basin	in the bathroom
Shower	en suite Seperate from toilet
Guest cabin 1	v-bed
Bed length (m)	2
Wardrobe	hanging and shelves
Bathroom	en suite
Toilet	en suite
Toilet system	manual 12v prepared
Wash basin	in the bathroom
Washing machine/dryer combi	6Kg

MACHINERY

No of engines	1
Make	Iveco
Type	8060 SM 21.10
HP	210,00
kW	154,35
Fuel	diesel
Maximum speed (kn)	9
Engine hours	3220
Engine cooling system	freshwater heat exchanger 2-way
Drive	shaft
Engine controls	mechanical
Gearbox	hydraulic
Bowthruster	electric 85 KgF
Sternthruster	electric 85KgF
Propeller type	fixed



Propeller blades	4x bronze
Propeller shaft material	stainless steel With ropecutter
Shaft lubrication	water Direct from engine
Electric bilge pump	2x
Generator	wet exhaust Mastervolt 6Kw
Running hours generator	300
Start battery	1x 95 Ah
Service battery	3x 170Ah (2017)
Bowthruster battery	2x 115Ah
Sternthruster battery	2x 115Ah
Battery charger	2x Sterling Pro dynamo (65 & 95 Ah)
Battery charger/inverter	Victron 1600W/70Ah (2015)
Shorepower	with cable
Insulation transformer	yes
Extra info	Double seawaterfilter system
Extra info	Double diesel filter system
Extra info	17x 230 sockets, 3x 12V sockets

NAVIGATION

Electric compass	Raymarine
Depth sounder/log	Raymarine Tridata
VHF	Simrad RS 87
Navigation lights	Aquasignal
Searchlight	yes
Loudhailer	yes

EQUIPMENT

Fixed windscreen	2017 new rubbers
Sprayhood	2014 new
Sun awning	2014 new
Cockpit table	Teak



SUCCES 125 ULTRA

Cockpit chairs	2x teak
Bathing platform	yes
Boarding ladder	stainless steel
Transom door	yes
Bow ladder	yes
Deck shower	Warm and cold
Anchor	Danforth
Anchor chain	30 meters
Windlass	electrical
Deck wash	yes
Sea railing	stainless steel
Railing side opening gates	yes
Lifejackets	yes
Lifebuoy	yes
Wiper	3x
Window heating	yes
Horn	electric
Fenders	With 4x fenderholder
Alarm system	Mobile
TV	Flatscreen
TV receiver	Sat
Radio-cd player	yes
Cockpit speakers	yes
Clock - barometer	yes
Extinguisher in engine room	With remote



SUCCES 125 ULTRA



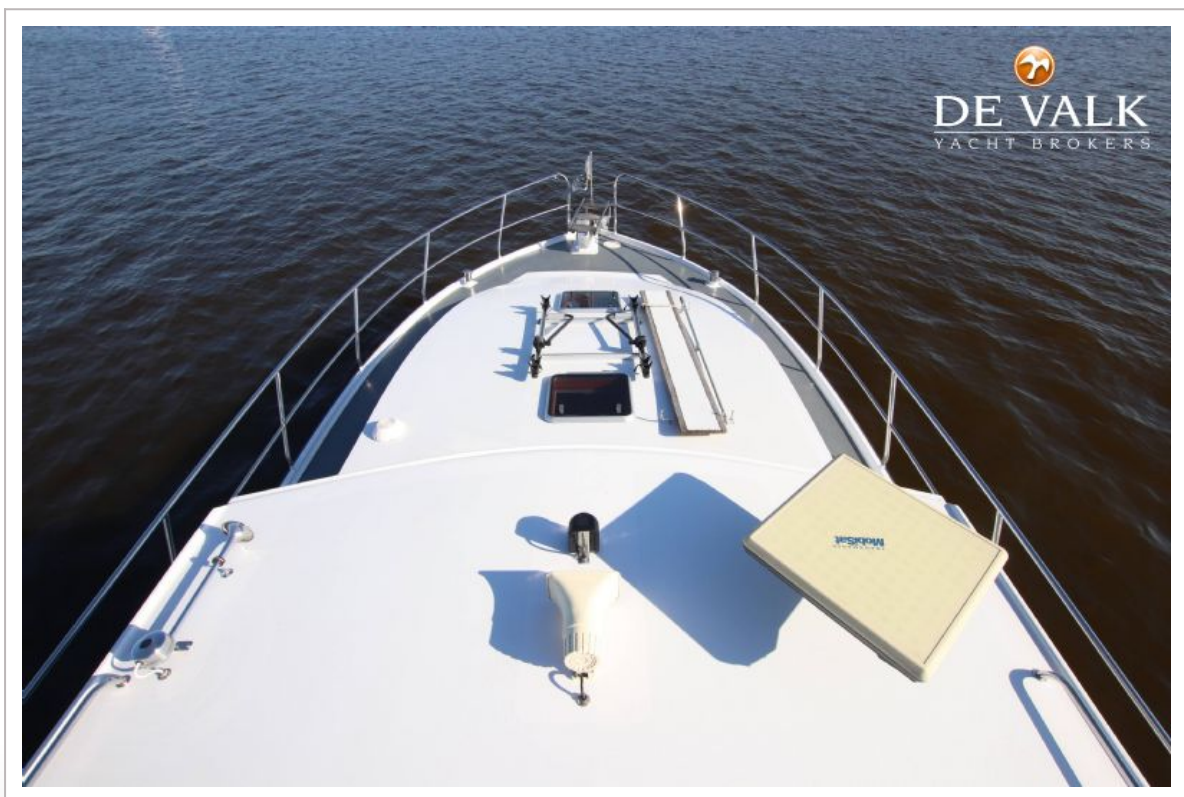
SUCCES 125 ULTRA



SUCCES 125 ULTRA



SUCCES 125 ULTRA



SUCCES 125 ULTRA



SUCCES 125 ULTRA



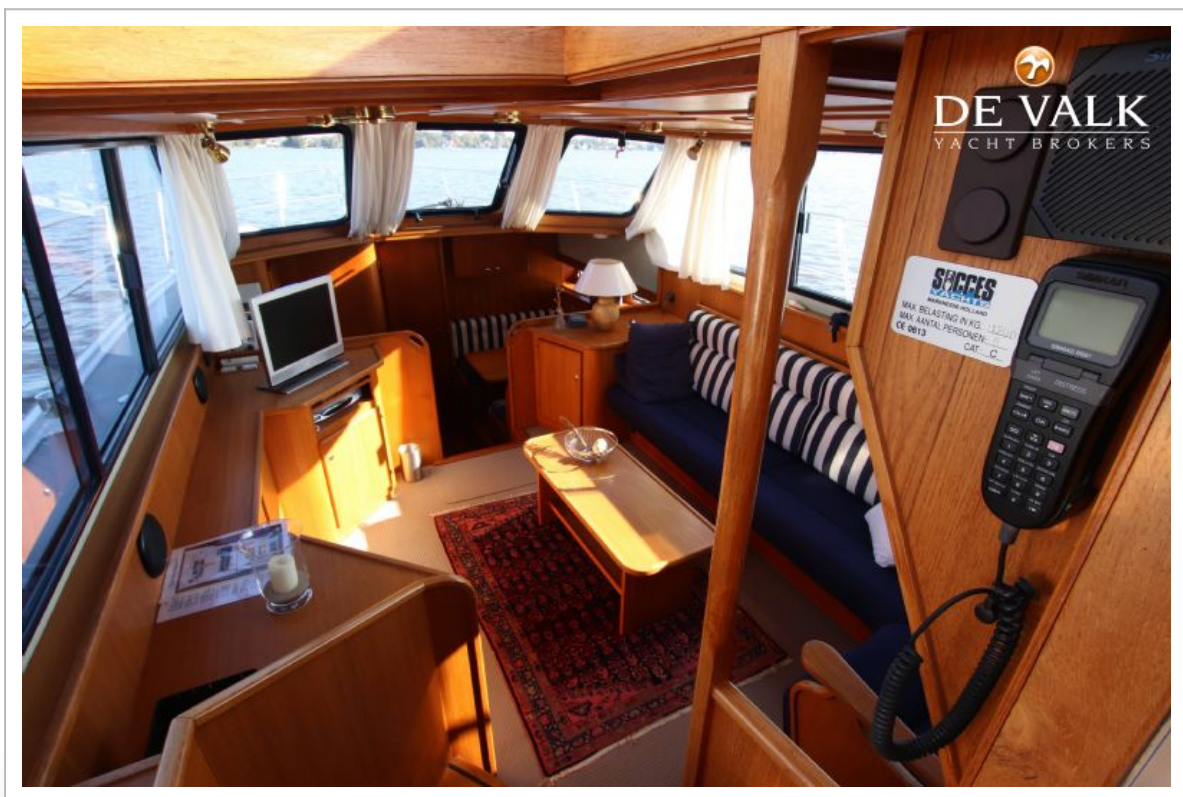
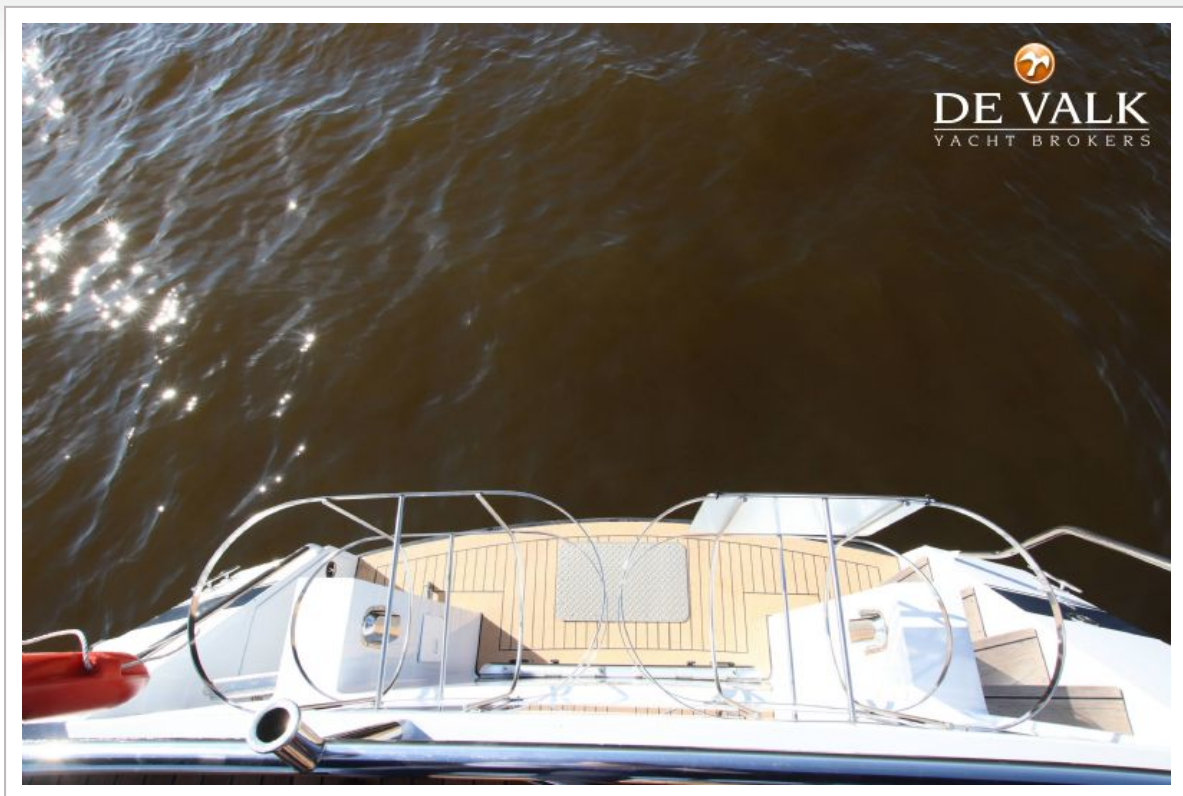
SUCCES 125 ULTRA



SUCCES 125 ULTRA



SUCCES 125 ULTRA



SUCCES 125 ULTRA



SUCCES 125 ULTRA



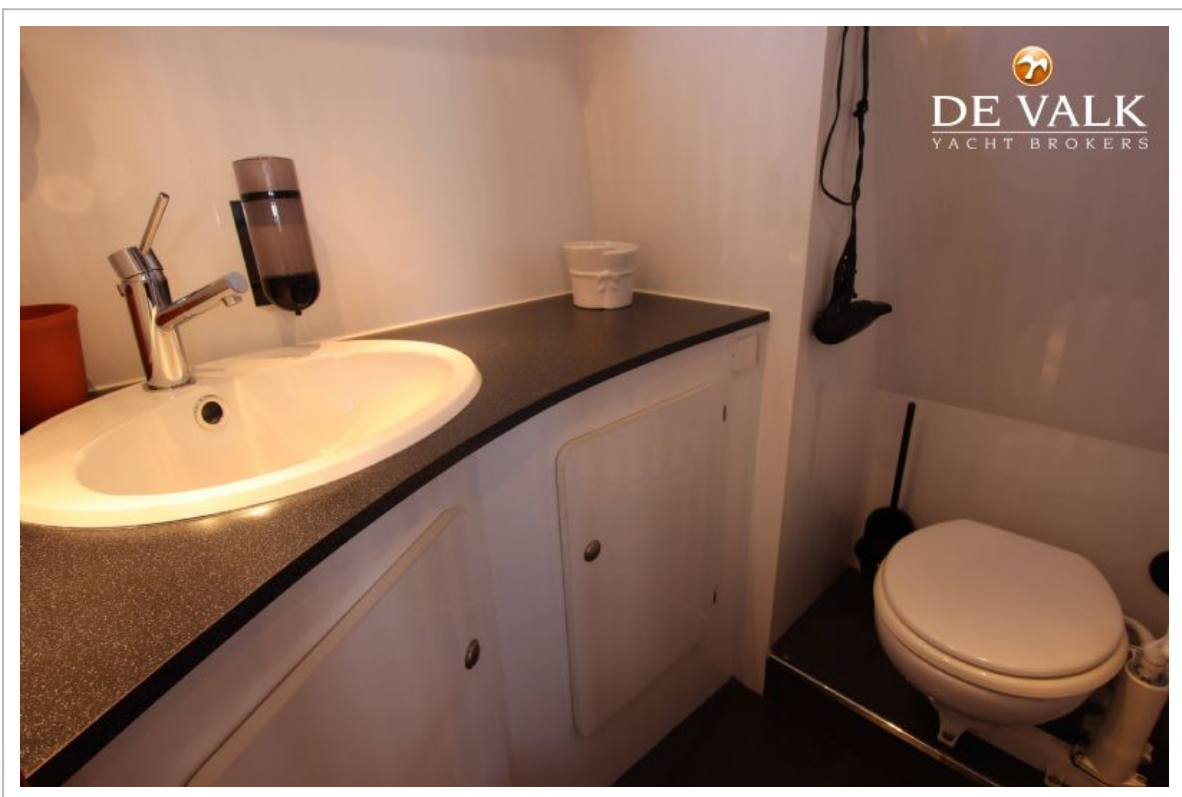
SUCCES 125 ULTRA



SUCCES 125 ULTRA



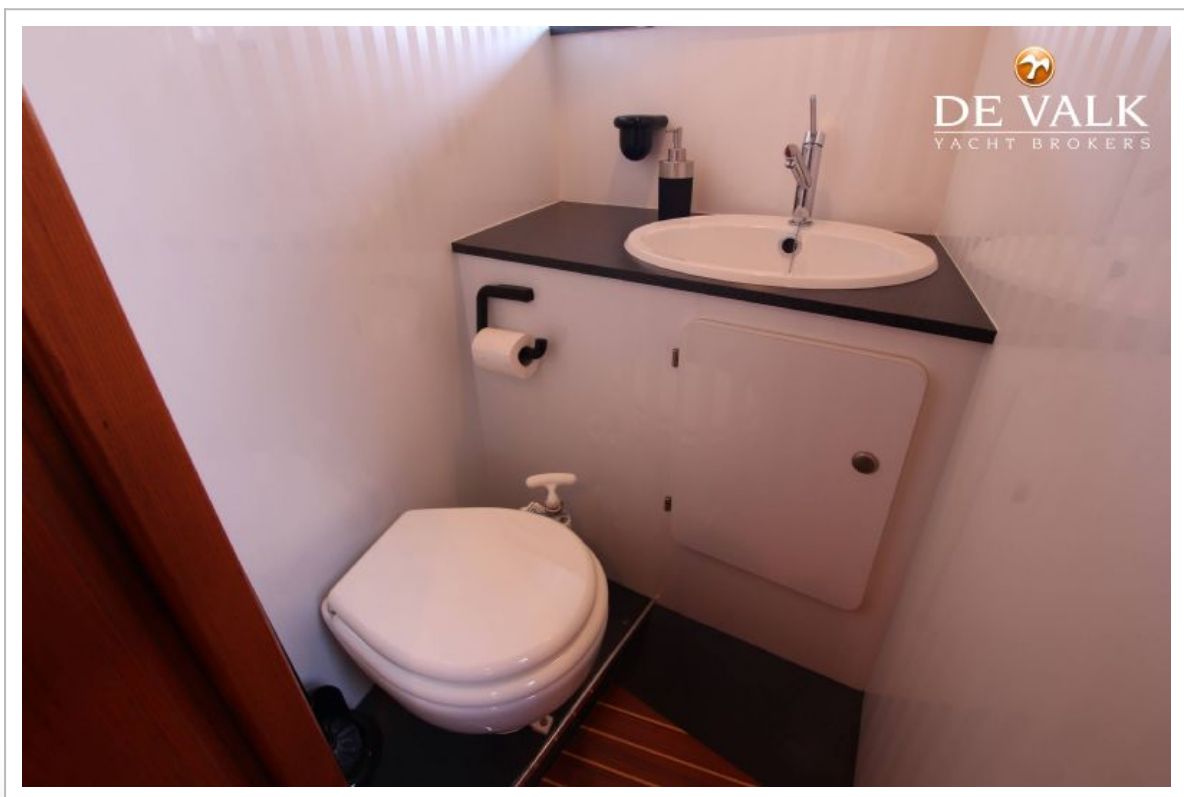
SUCCES 125 ULTRA



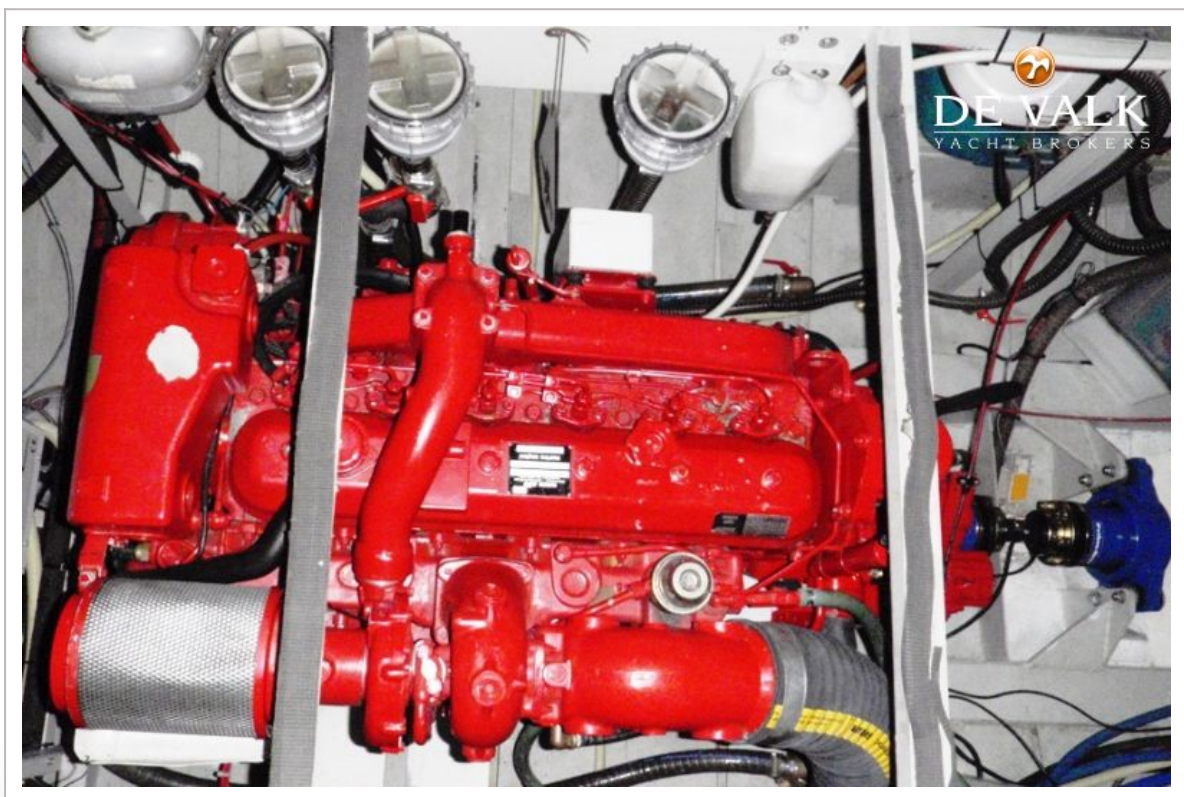
SUCCES 125 ULTRA



SUCCES 125 ULTRA



SUCCES 125 ULTRA



SUCCES 125 ULTRA

