



PACIFIC 155 VS

PACIFIC 155 VS

BROKER'S COMMENTS

Well maintained Pacific Allure 155 available for viewing in our covered sales marina in Loosdrecht! This Pacific has a very spacious layout and therefore very suitable for a longer stay on board. Equipped with a spacious pilothouse, three cabins, two bathrooms, wash/dry combination and Kabola heating. With her Volvo Penta diesel engine and electric bow- and sternthruster is "Nenuphar" easy to handle with her remote control.

Mark Hesselmans

SPECIFICATIONS

Dimensions	16.50 x 4.85 x 1.35 (m)	Builder	Pacific, Waspik
Built	2001	Cabins	3
Material	Steel	Berths	6
Engine(s)	1 x Volvo TAMD63 diesel	Hp/Kw	235.00 (hp), 172.73 (kw)
Asking price	sold (VAT)	Lying	at sales office

CONTACT

Sales office	De Valk Loosdrecht B.V.	Telephone	+31 (0)35 582 90 30
Address	't Breukeleveense Meentje 6 1231LM Loosdrecht / Wijdmeren NL	E-mail	loosdrecht@devalk.nl

DISCLAIMER

These particulars are given in good faith as supplied but cannot be guaranteed.



PACIFIC 155 VS

GENERAL

Model	PACIFIC 155 VS
Type	motor yacht
LOA (m)	16,50
Beam (m)	4,85
Draft (m)	1,35
Air draft (m)	5,40
Air draft min (m)	3,80
Headroom (m)	2,00
Year built	2001
Builder	Pacific, Waspik
Country	The Netherlands
Designer	B. van der Pelt
Displacement (t)	32
CE norm	C
Hull material	steel
Hull colour	white
Hull shape	hard chine
Superstructure material	steel
Rubbing strake	stainless steel
Deck material	steel
Deck finish	teak
Window frame	aluminium
Window material	double glazing
Portholes	yes
Radar arch	collapsible Hydraulic
Fuel tank (litre)	steel 2x 600
Fuel tank 2 (litre)	steel 400
Level indicator (fuel tank)	yes
Freshwater tank (litre)	stainless steel 1000
Level indicator (freshwater)	yes



PACIFIC 155 VS

Blackwater tank (litre)	stainless steel 350
Wheel steering	hydraulic

ACCOMMODATION

Cabins	3
Berths	6
Interior	teak
Floor	teak
Saloon	yes
Headroom saloon (m)	2
Heating	central heating Kabola 19,7 KW
Aft Cabin	yes
Dining room	yes
Opening door to aft deck	yes
Galley	yes
Countertop	yes
Sink	stainless steel
Cooker	ceramic Bosch 4x
Microwave/oven combi	Bosch 50 Hz/ 3.6 Kw
Fridge	Bosch 1x 230L + freezer + 1x 110L fridge in wheelhouse
Hot water system	220V or central heating
Water pressure system	electrical
Dishwasher	Bosch Silence Plus 2018
Owners cabin	double bed
Bed length (m)	2,00x1,60
Wardrobe	hanging/drawers/shelves
Bathroom	en suite
Toilet	en suite
Toilet system	electric
Wash basin	in the bathroom
Shower	en suite



PACIFIC 155 VS

Guest cabin 1	double bed
Bed length (m)	2,00x1,40
Wardrobe	drawers and shelves
Toilet	shared
Toilet system	electric
Wash basin	at the toilet
Guest cabin 2	bunk bed
Bed length (m)	2x 2,00x0,80

MACHINERY

No of engines	1
Make	Volvo
Type	TAMD63
HP	235,00
kW	172,73
Fuel	diesel
Maximum speed (kn)	9
Cruising speed (kn)	6
Engine hours	1750
Engine cooling system	freshwater heat exchanger
Drive	shaft
Engine controls	electrical With remote control
Gearbox	hydraulic Volvo
Bowthruster	electric Volvo 24V with remote control
Sternthruster	electric Volvo 24V with remote control
Exhaust	watercooled
Shaft lubrication	water
Manual bilge pump	yes
Electric bilge pump	yes
Generator	Mastervolt 12KVA 1500T
Start battery	2x 110 Ah



Service battery	6X 230 Ah (2017)
Generator battery	72 Ah/12V Wilco
Bowthruster battery	230 Ah (2017)
Sternthruster battery	230 Ah (2017)
Battery charger	Mastervolt 24/75
Inverter	Mastervolt Dakar Sine 24/3000
Shorepower	with cable

NAVIGATION

Electric compass	Simrad IS-15
Depth sounder	Simrad IS-15
VHF	Shipmate RS 8300
Autopilot	Simrad AP-20
Rudder angle indicator	Simrad IS-15
Navigation lights	yes
Searchlight	yes

EQUIPMENT

Bimini	yes
Bathing platform	yes
Boarding ladder	stainless steel
Deck shower	yes
Anchor	yes
Anchor 2	yes
Windlass	electrical Lofrans 1000W/24V
Windlass aft	electrical Lofrans 1000W/24V
Davits	stainless steel
Davits controls	manual
Sea railing	stainless steel
Grab rail (superstructure)	stainless steel
Wiper	yes



PACIFIC 155 VS

Horn

TV

Radio-cd player

electric

Phillips and Samsung

JVC



PACIFIC 155 VS



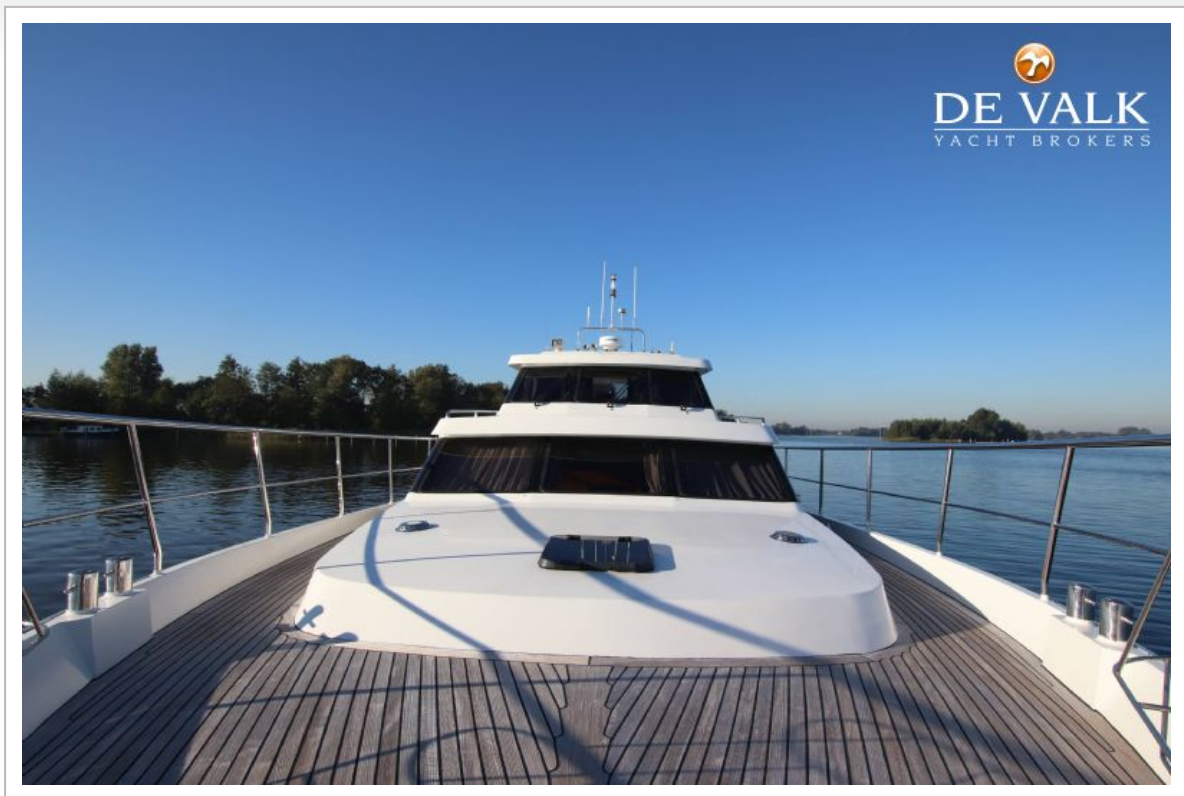
PACIFIC 155 VS



PACIFIC 155 VS



PACIFIC 155 VS



PACIFIC 155 VS



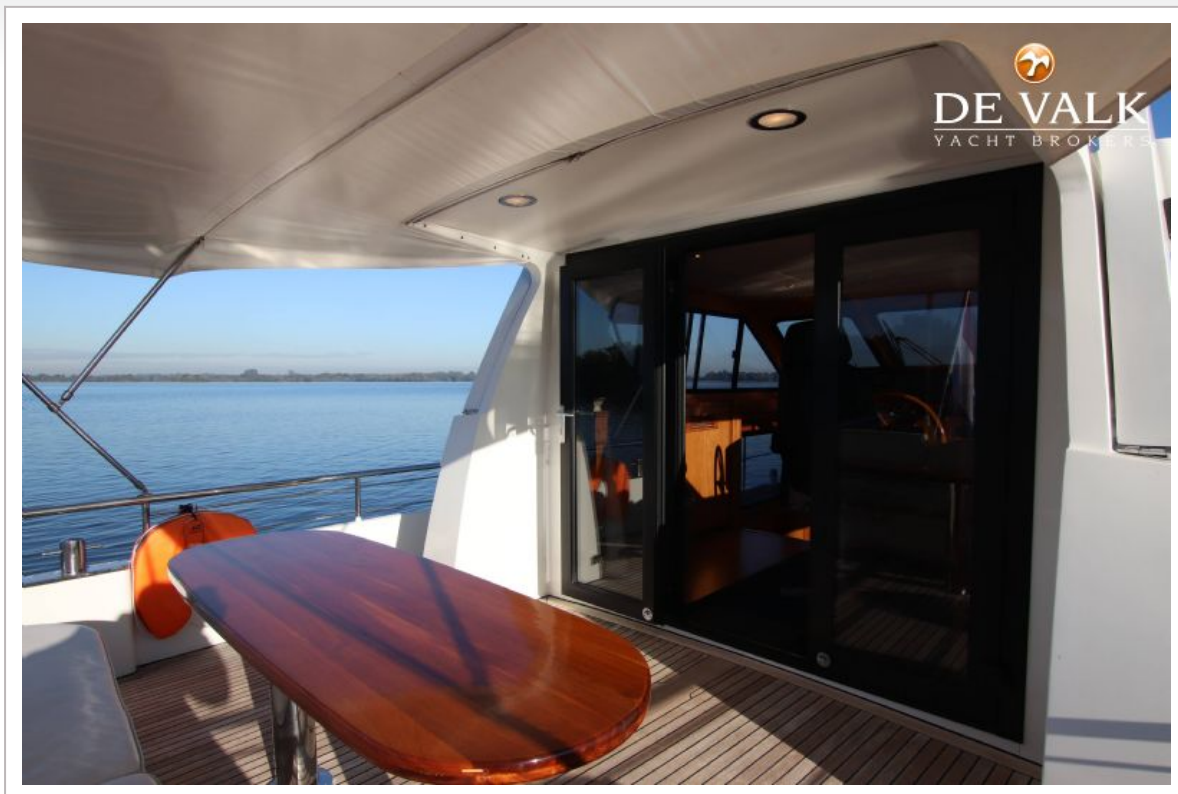
PACIFIC 155 VS



PACIFIC 155 VS



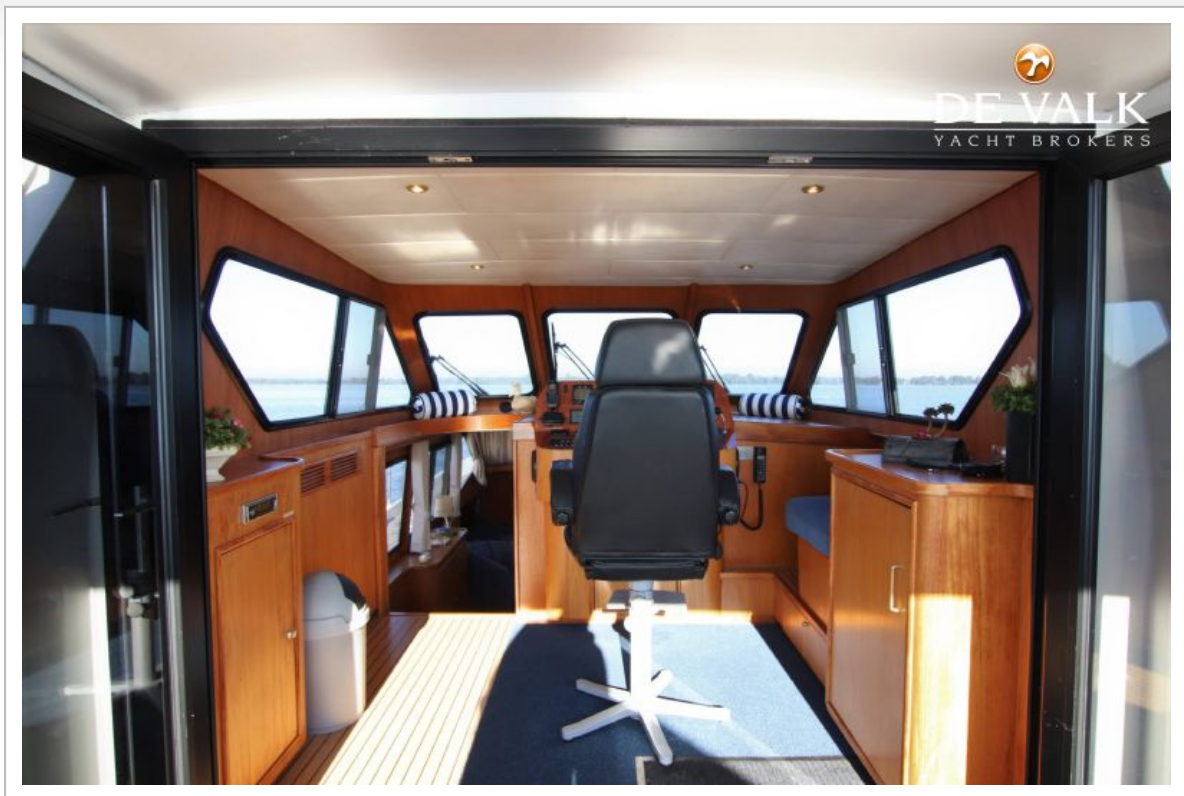
PACIFIC 155 VS



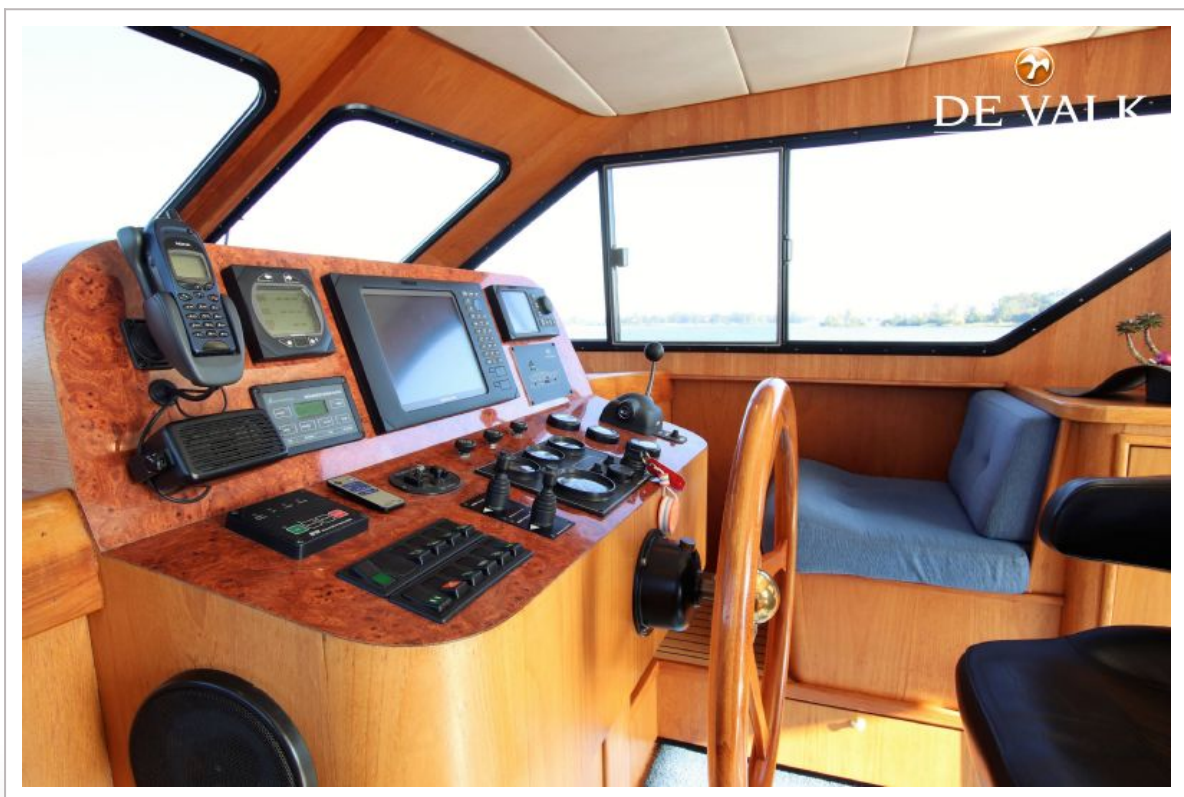
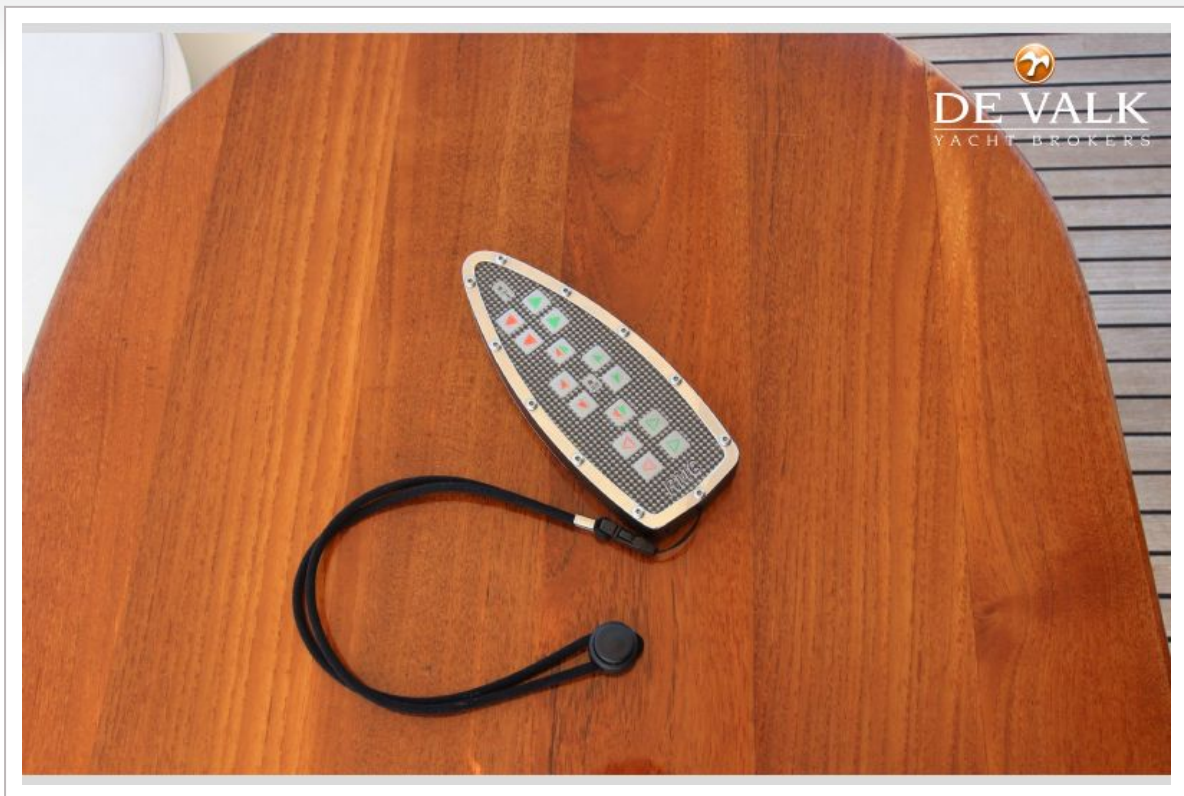
PACIFIC 155 VS



PACIFIC 155 VS



PACIFIC 155 VS



PACIFIC 155 VS



PACIFIC 155 VS



PACIFIC 155 VS



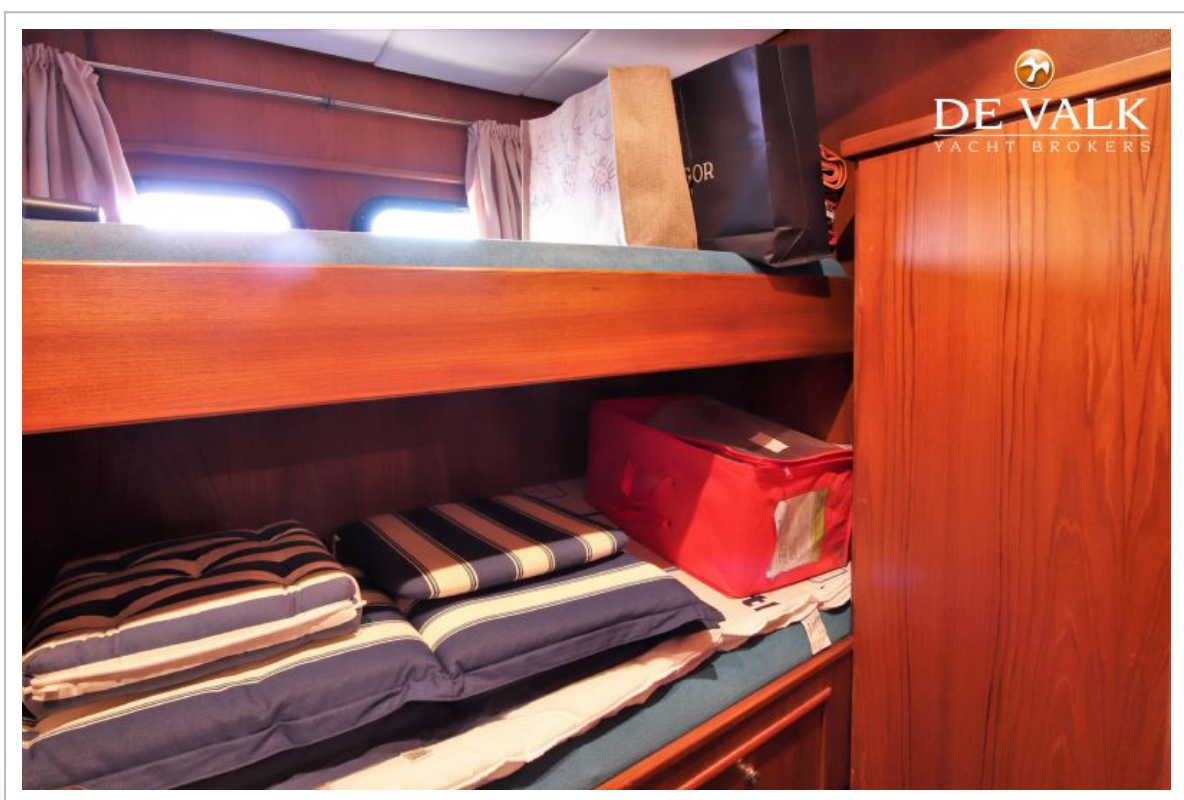
PACIFIC 155 VS



PACIFIC 155 VS



PACIFIC 155 VS



PACIFIC 155 VS

