



DE VALK
YACHT BROKERS



VENNEKENS TRAWLER 1800



DE VALK
YACHT BROKERS

VENNEKENS TRAWLER 1800

BROKER'S COMMENTS

This trawler was built by Jachtwerf Vennekens. It is a safe, seaworthy, and comfortable motor yacht, highly suitable for both inland and offshore waters thanks to its shallow draft and ideal layout with ample comfort. The vessel is equipped with double glazing, central heating, bow and stern thrusters, stabilizers, and a generator, making this yacht exceptionally well-appointed. Viewing is possible at our sales marina in Loosdrecht.

Sjoerd Paddenburg

SPECIFICATIONS

Dimensions	18.00 x 5.60 x 1.40 (m)	Builder	Jachtwerf Vennekens
Built	2010	Cabins	3
Material	Steel	Berths	6
Engine(s)	2 x Caterpillar C7DI diesel	Hp/Kw	2 x 255.00 (hp), 187.68 (kw)
Asking price	€ 745.000 (VAT Paid)	Lying	at sales office

CONTACT

Sales office	De Valk Loosdrecht B.V.	Telephone	+31 (0)35 582 90 30
Address	't Breukeleveense Meentje 6 1231LM Loosdrecht / Wijdmeren NL	E-mail	loosdrecht@devalk.nl

DISCLAIMER

These particulars are given in good faith as supplied but cannot be guaranteed.



VENNEKENS TRAWLER 1800

GENERAL

Model	VENNEKENS TRAWLER 1800
Type	motor yacht
LOA (m)	18,00
Beam (m)	5,60
Draft (m)	1,40
Air draft (m)	7,20
Air draft min (m)	4,90
Year built	2010
Builder	Jachtwerf Vennekens
Country	Belgium
Displacement (t)	55
CE norm	A
Hull material	steel
Hull colour	off-white
Hull shape	round-bilged
Superstructure material	steel
Rubbing strake	stainless steel
Deck material	steel
Deck finish	teak
Superstructure deck finish	teak
Cockpit deck finish	teak
Window frame	aluminium
Window material	double glazing
Portholes	stainless steel
Flybridge	yes
Mast can be lowered	hydraulic
Fuel tank (litre)	steel 4x total 6000
Level indicator (fuel tank)	yes
Freshwater tank (litre)	2000
Level indicator (freshwater)	yes



VENNEKENS TRAWLER 1800

Blackwater tank (litre)	1400
Level indicator (blackwater)	yes
Blackwater tank extraction	deck extraction + pump
Wheel steering	hydraulic
Inside helm position	yes
Outside helm position	Hydronautica Remote
Flybridge helm position	hydraulic

ACCOMMODATION

Cabins	3
Berths	6
Interior	cherry
Floor	carpet
Aft deck	yes
Deck saloon	yes
Heating	central heating Maritime Booster
Air-conditioning	reverse cycle airco
Dinette	yes
Opening door to aft deck	yes
Galley	yes
Countertop	corian
Sink	stainless steel Double
Cooker	ceramic
Microwave/oven combi	AEG
Fridge	yes
Hot water system	on central heating
Water pressure system	electrical
Dishwasher	AEG
Owners cabin	French bed
Wardrobe	hanging and drawers
Bathroom	shared



VENNEKENS TRAWLER 1800

Toilet	shared
Toilet system	electric
Wash basin	in the bathroom
Shower	shared
Guest cabin 1	v-bed
Wardrobe	hanging and shelves
Bathroom	en suite
Toilet	en suite
Toilet system	electric
Wash basin	in the bathroom
Shower	en suite
Guest cabin 2	bunk bed
Wardrobe	shelves
Washing machine	Whirlpool
Dryer	Whirlpool
Extra info	Pantograph side doors on both port and starboard sides
Extra info	Lightning mostly LED dimmers

MACHINERY

No of engines	2
Make	Caterpillar
Type	C7DI
HP	255
kW	187.68
Fuel	diesel
Engine hours	2307
Engine cooling system	freshwater heat exchanger
Drive	shaft
Shaft seal	yes
Engine controls	electrical Kobelt
Gearbox	hydraulic Twin Disc 2.8:1



VENNEKENS TRAWLER 1800

Bowthruster	hydraulic
Sternthruster	hydraulic
Exhaust	watercooled
Propeller type	fixed
Propeller shaft material	stainless steel
Manual bilge pump	yes
Electric bilge pump	yes
Bilge alarm	yes
Generator	silent separator Mastervolt whisper Generator 16 Ultra 16kVa
Batteries	yes
Start battery	yes
Service battery	yes
Battery monitor	yes
Battery charger	Mastervolt Mass 24/100
Inverter	Mastervolt Mass Sine 24/5000
Diode battery combiners	yes
Shorepower	with cable
Insulation transformer	Mastervolt Mass GI 7.0
Stabilizers	fin Najad Marine
Extra info	Internal intercom system with siren

NAVIGATION

Electric compass	Autopilot
Multi control display	Simrad IS20
Depth sounder	yes
Log	yes
Windset	Simrad IS20
VHF	Simrad RS87
Autopilot	Simrad AP50
Rudder angle indicator	Autopilot
Radar	Northstar



VENNEKENS TRAWLER 1800

Plotter/GPS	Simrad
Navtex	yes
Electronic chart(s)	yes
AIS transceiver	Class A classification
Camera	Aft-facing camera and inside engine room
Navigation lights	yes
Searchlight	Jabsco
Loudhailer	yes

EQUIPMENT

Fixed windscreen	yes
Cockpit table	yes
Cockpit chairs	yes
Bathing platform	yes
Boarding ladder	stainless steel
Transom door	yes
Bow ladder	yes
Anchor	Pool
Anchor chain	yes
Windlass	hydraulic Muir
Windlass aft	hydraulic 2x
Sea railing	stainless steel
Grab rail (superstructure)	stainless steel
Railing side opening gates	yes
Life raft	container Seago, needs maintenance
Lifejackets	yes
Lifebuoy	yes
Danbuoy	yes
Horn	air pressure
Radar reflector	yes
Fenders	yes



VENNEKENS TRAWLER 1800

Mooring lines	yes
TV	yes
Surround Sound System	Bose



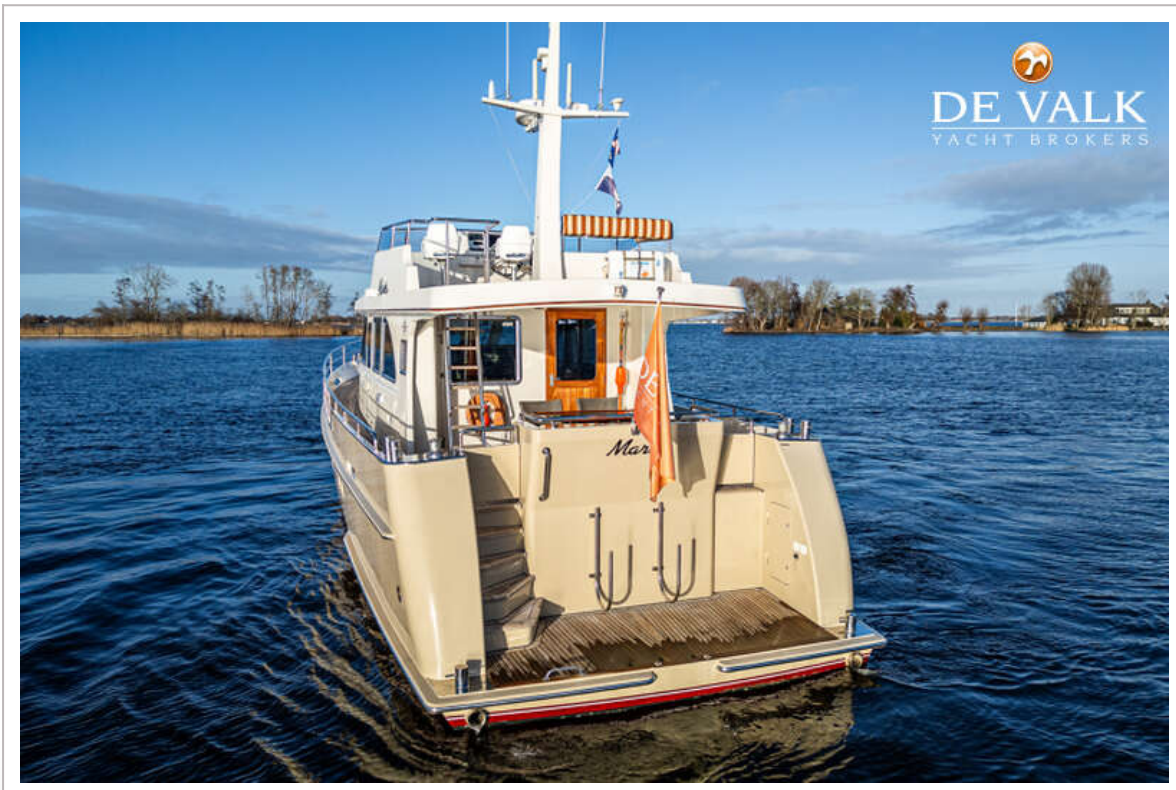
VENNEKENS TRAWLER 1800



VENNEKENS TRAWLER 1800



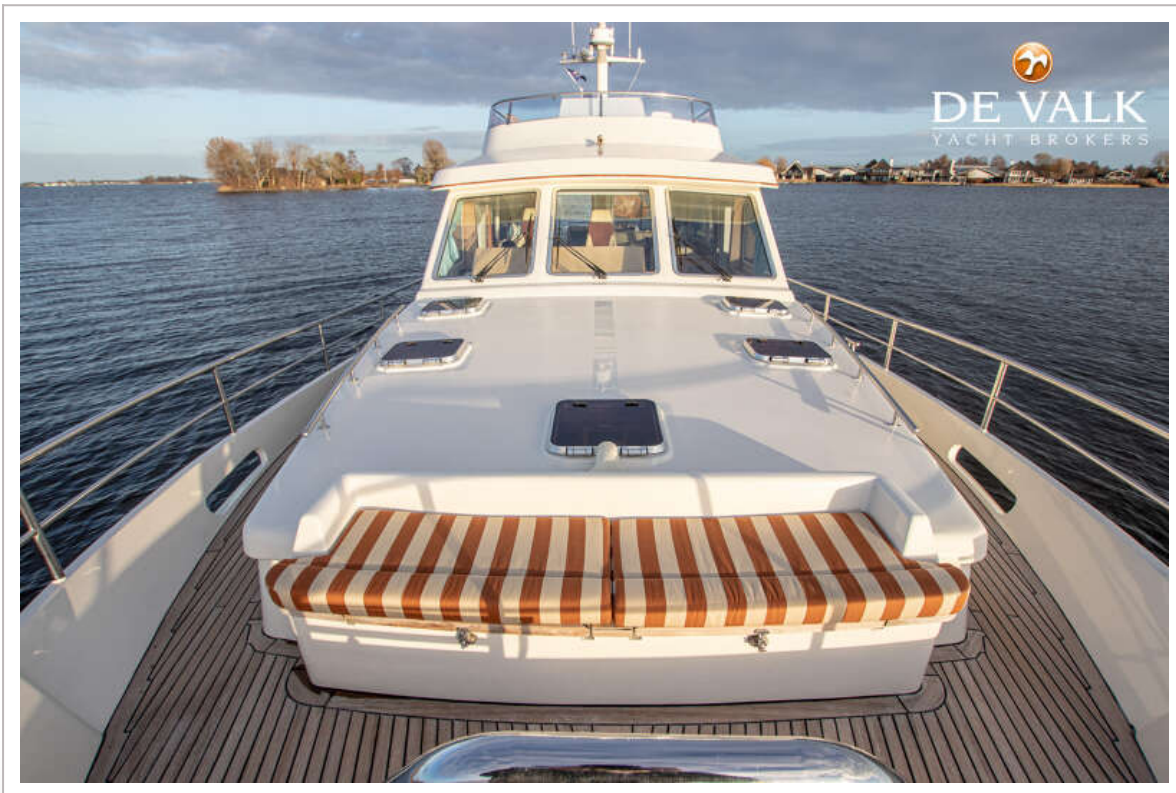
VENNEKENS TRAWLER 1800



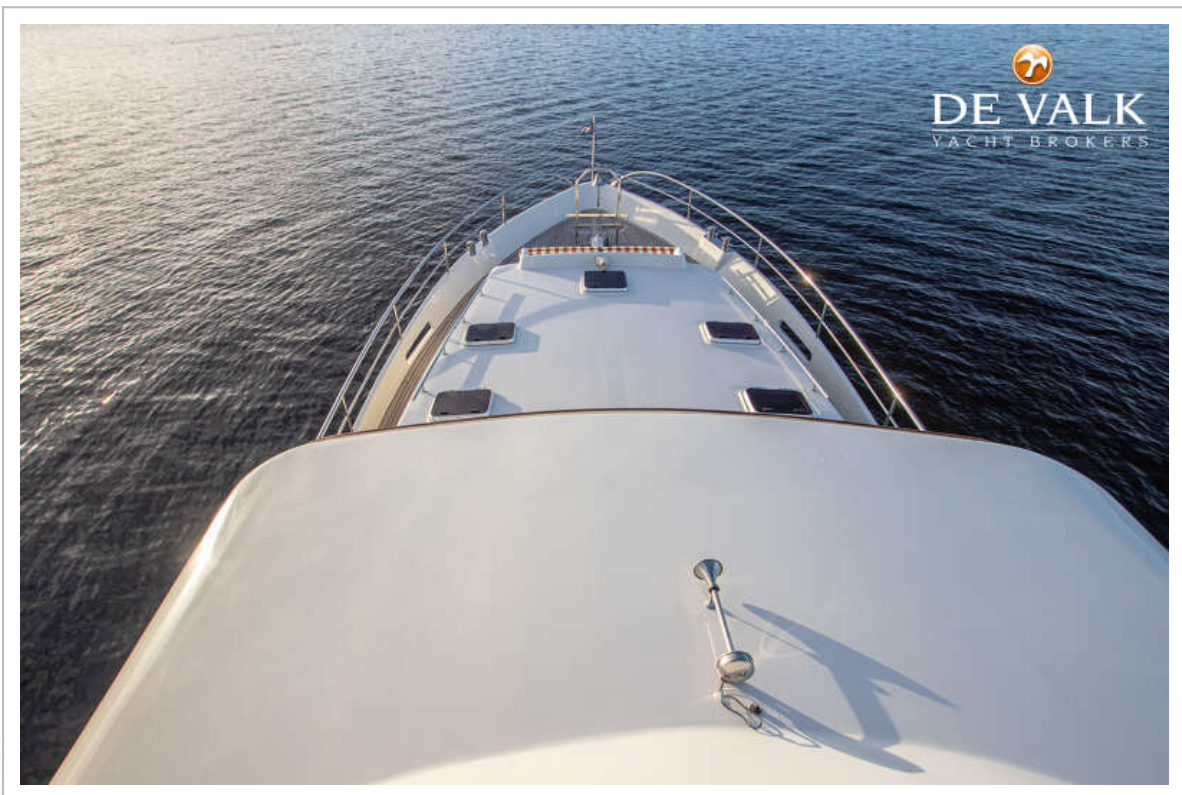
VENNEKENS TRAWLER 1800



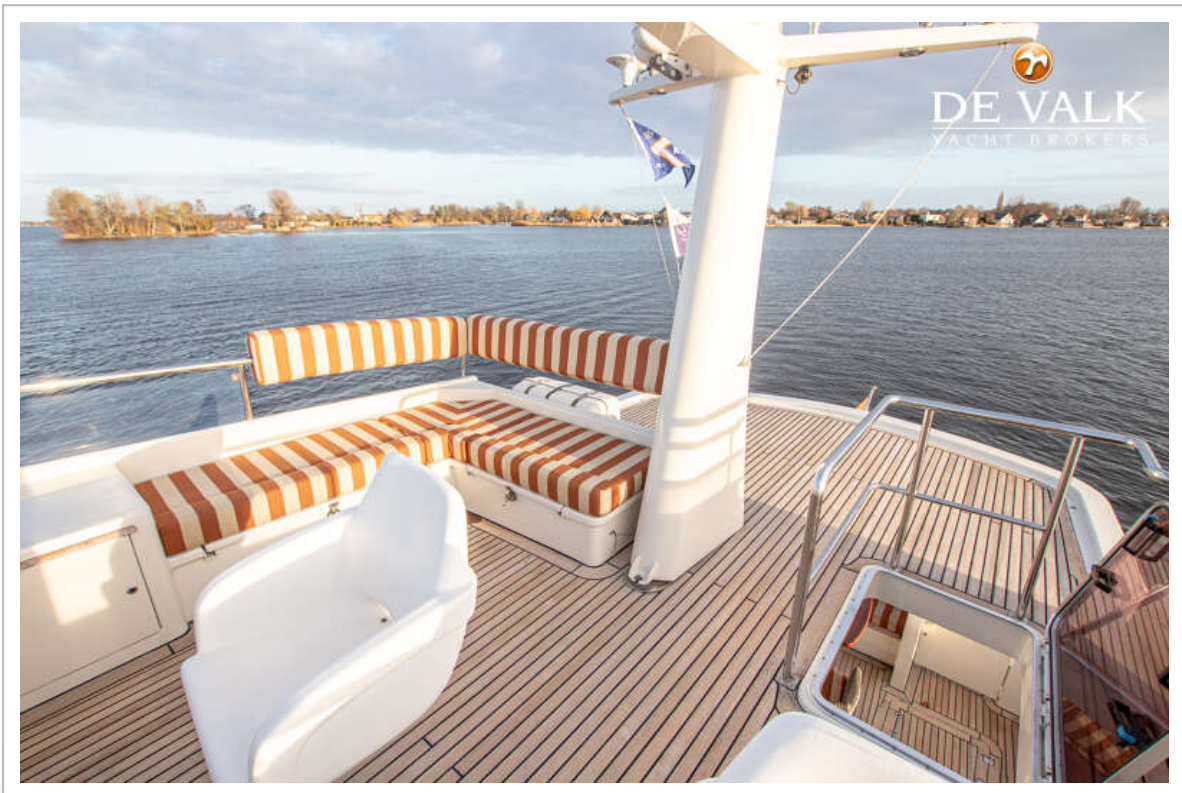
VENNEKENS TRAWLER 1800



VENNEKENS TRAWLER 1800



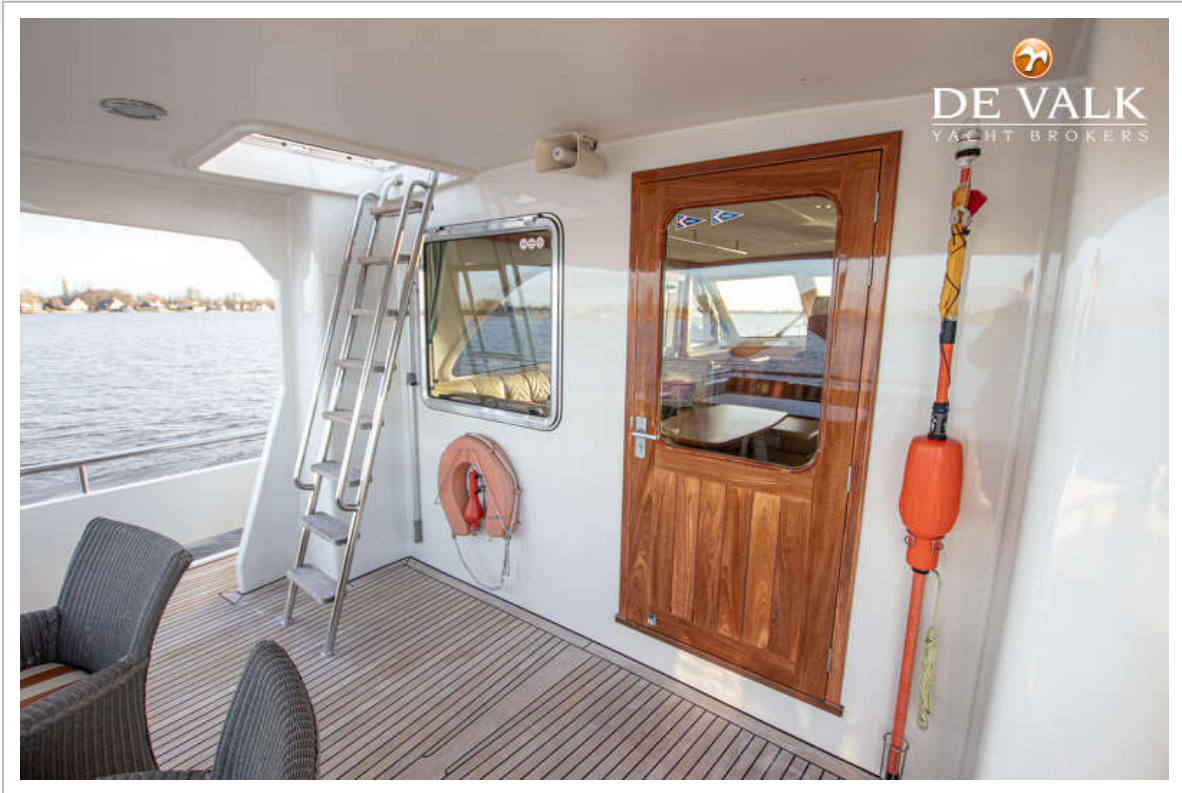
VENNEKENS TRAWLER 1800



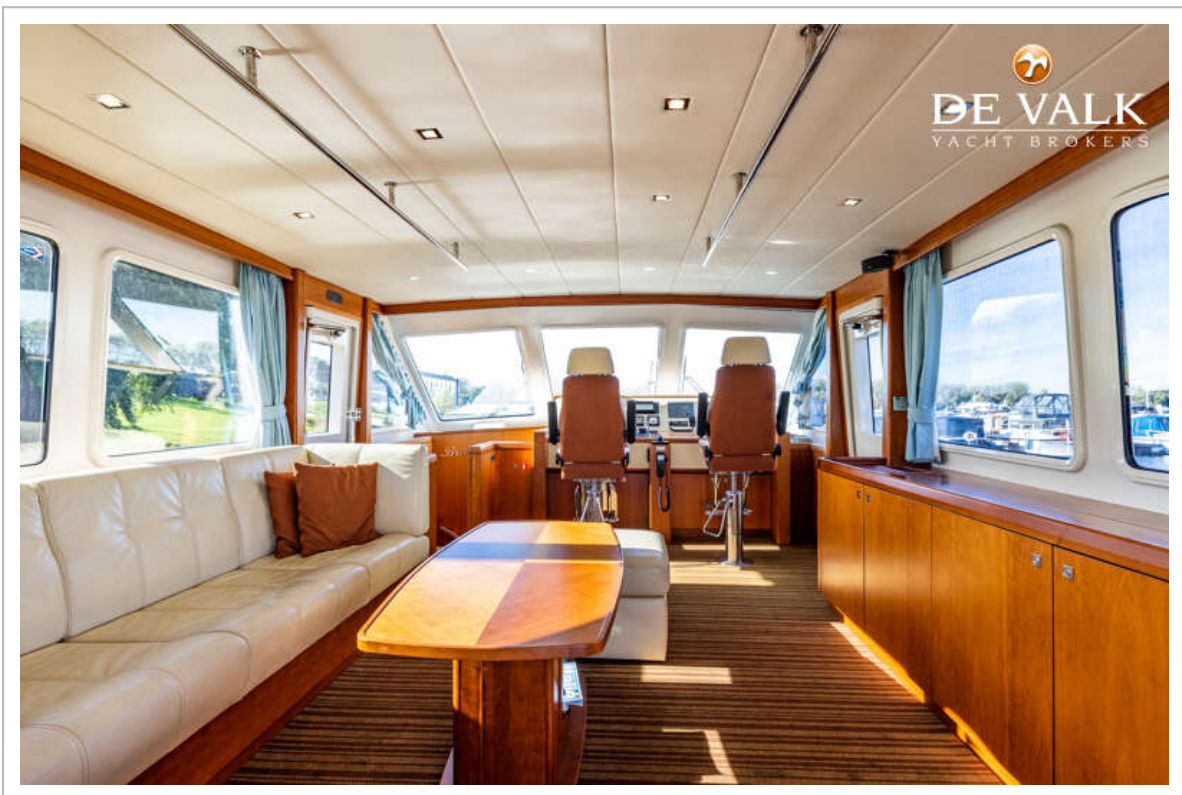
VENNEKENS TRAWLER 1800



VENNEKENS TRAWLER 1800



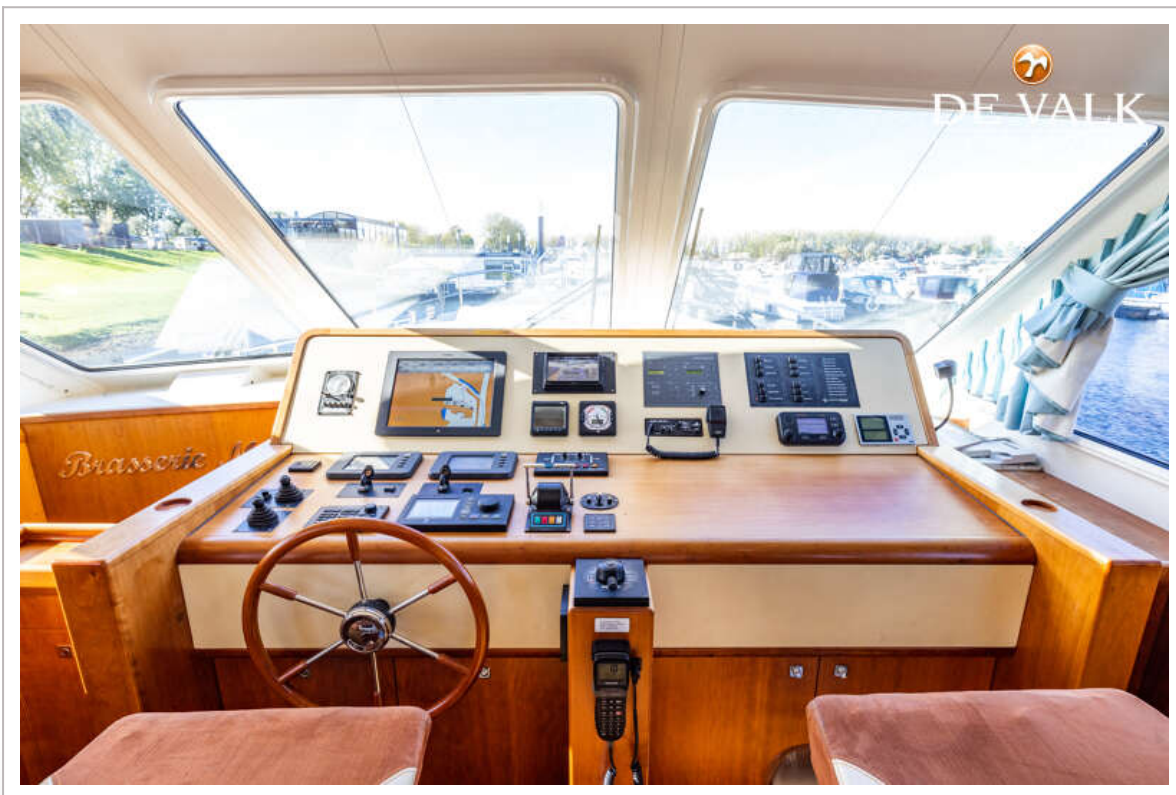
VENNEKENS TRAWLER 1800



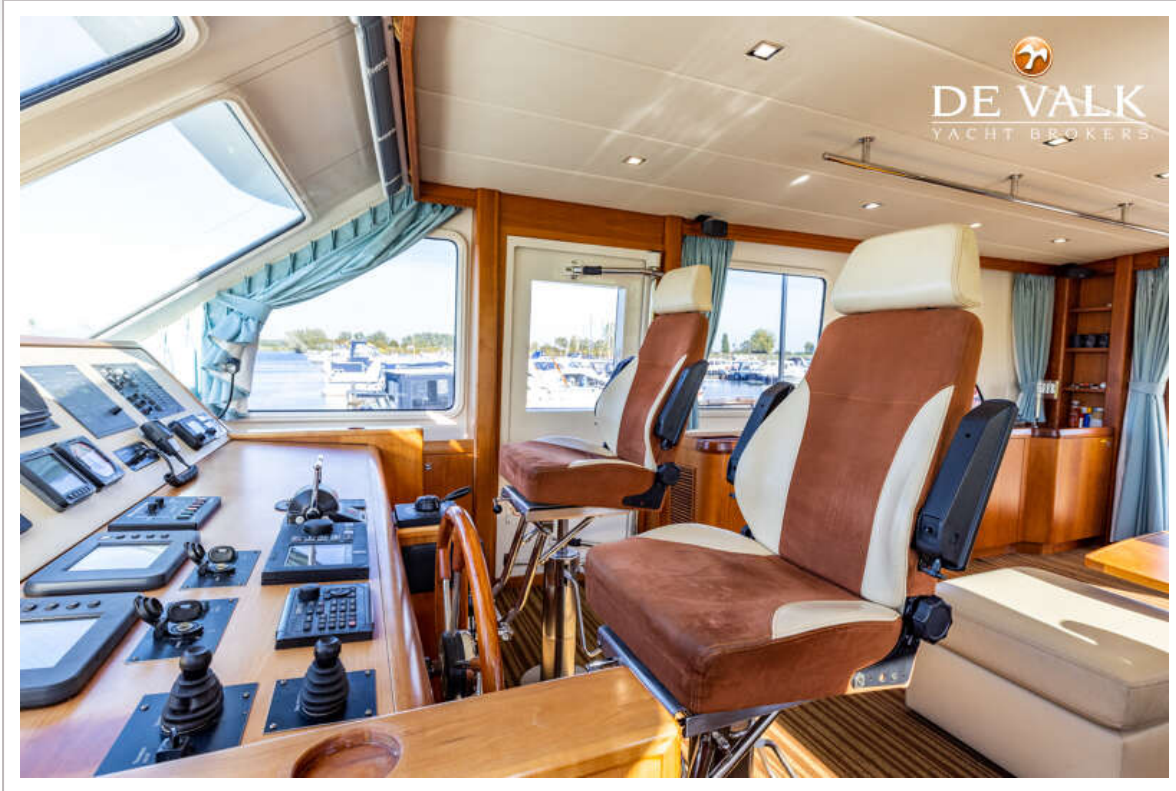
VENNEKENS TRAWLER 1800



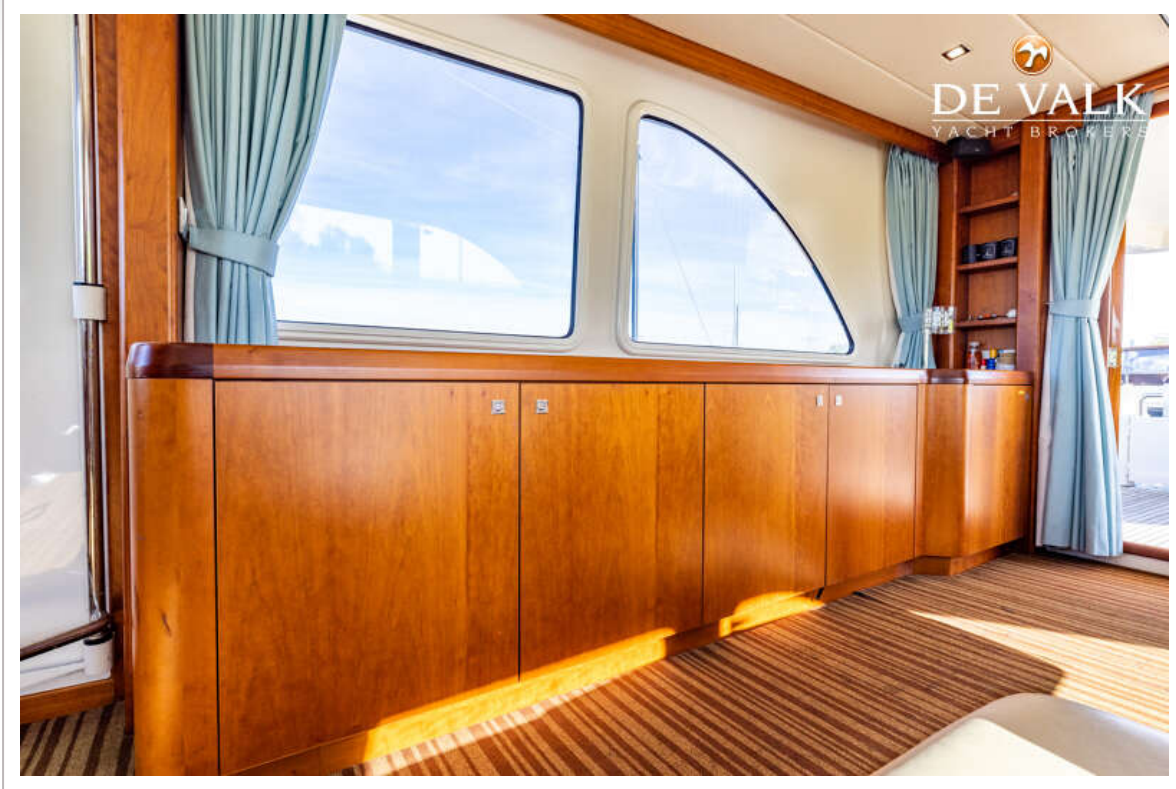
VENNEKENS TRAWLER 1800



VENNEKENS TRAWLER 1800



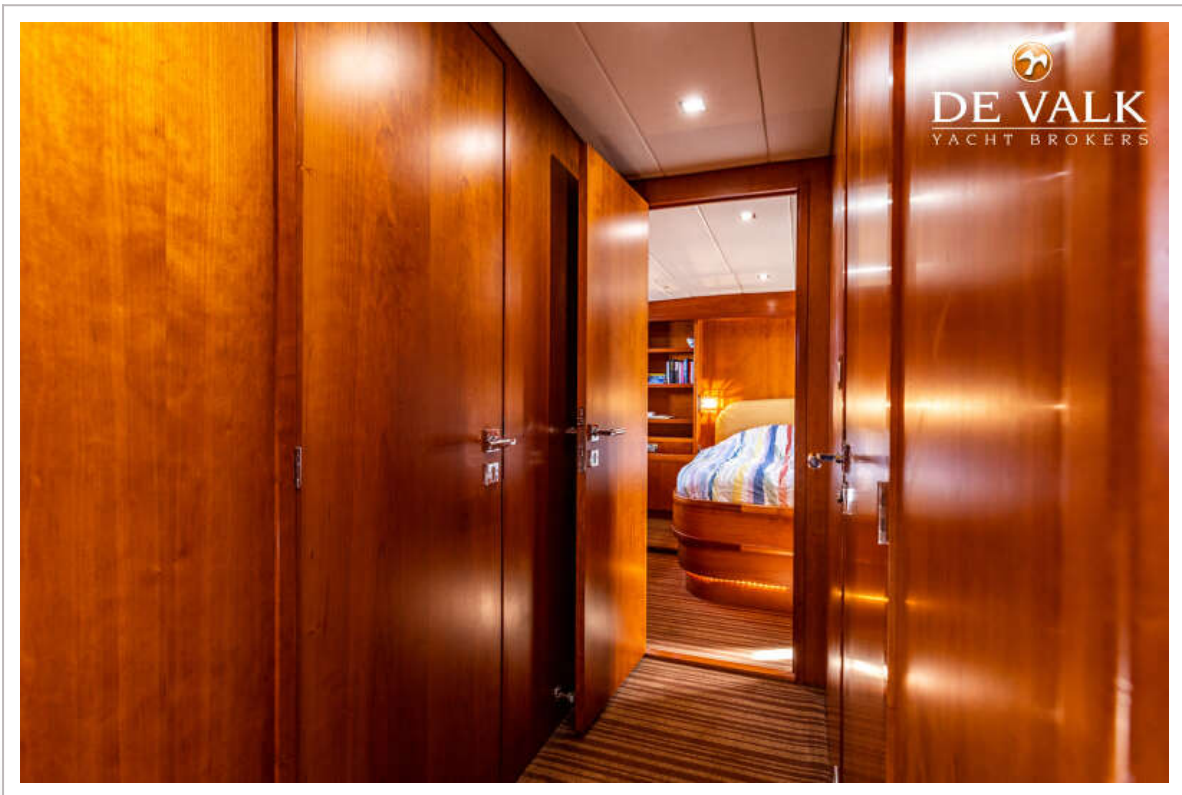
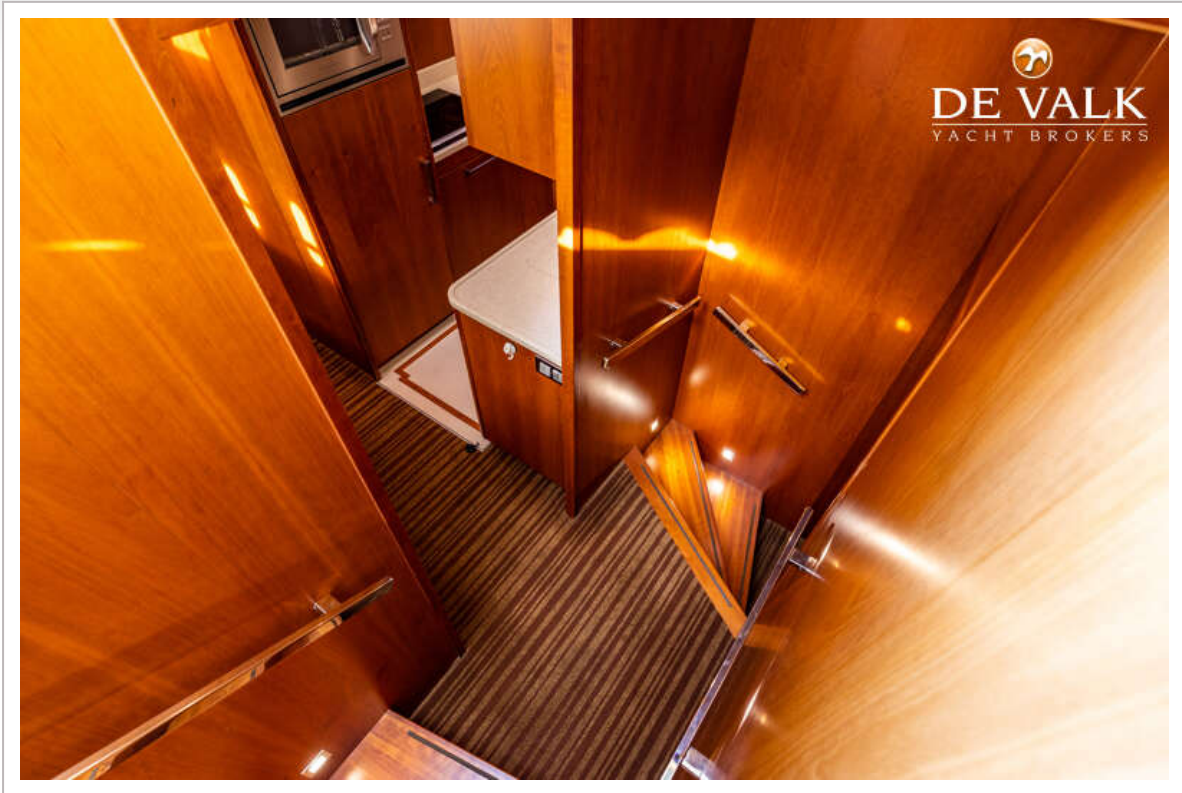
VENNEKENS TRAWLER 1800



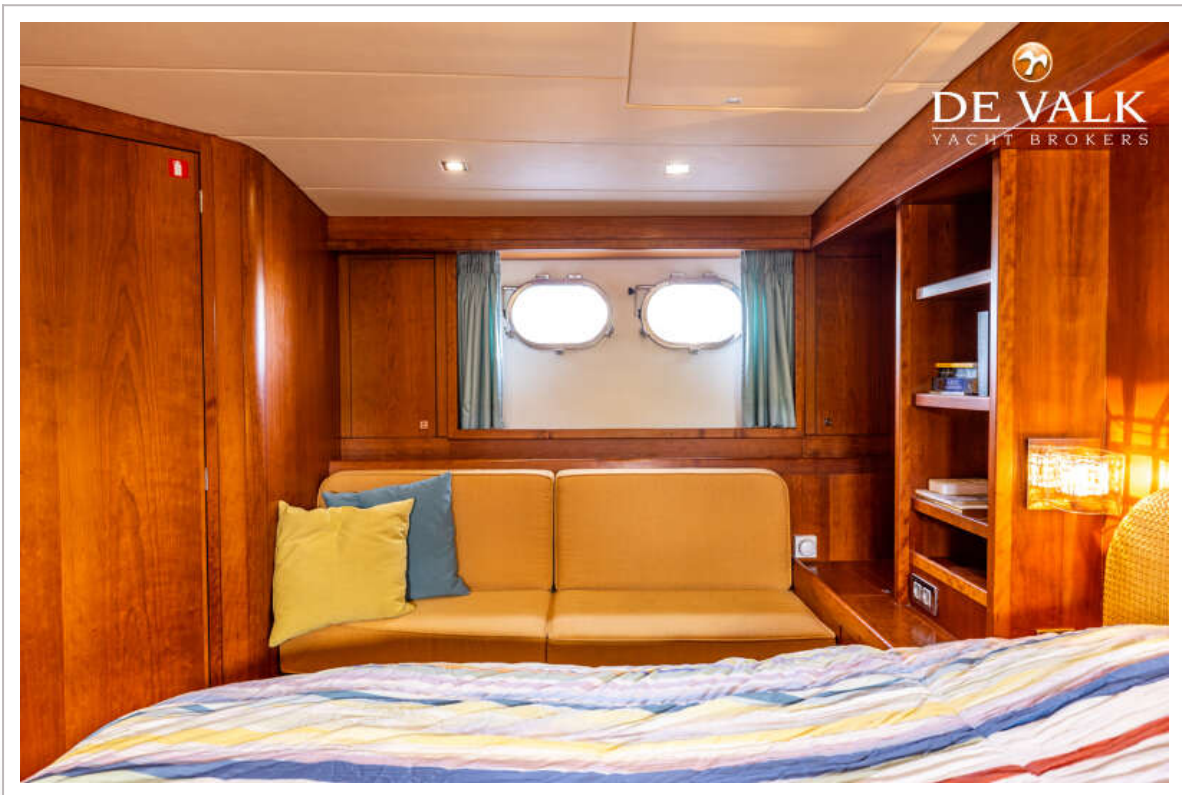
VENNEKENS TRAWLER 1800



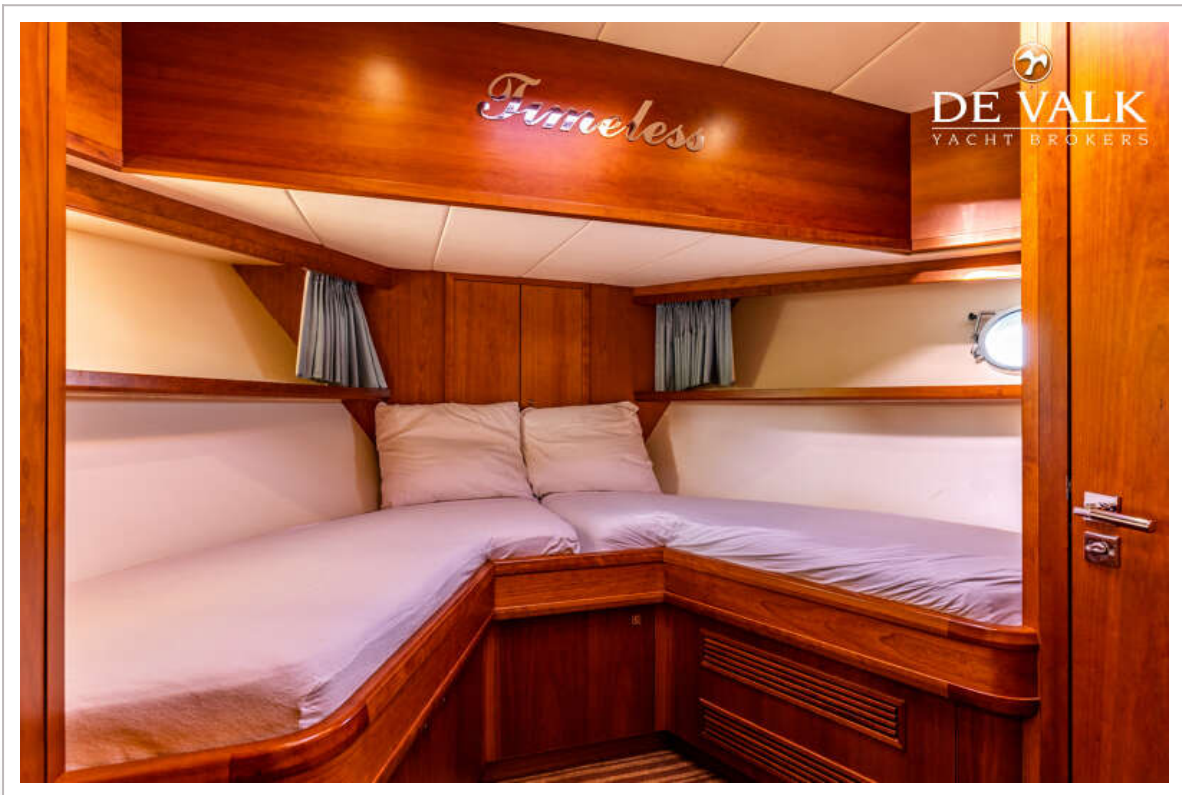
VENNEKENS TRAWLER 1800



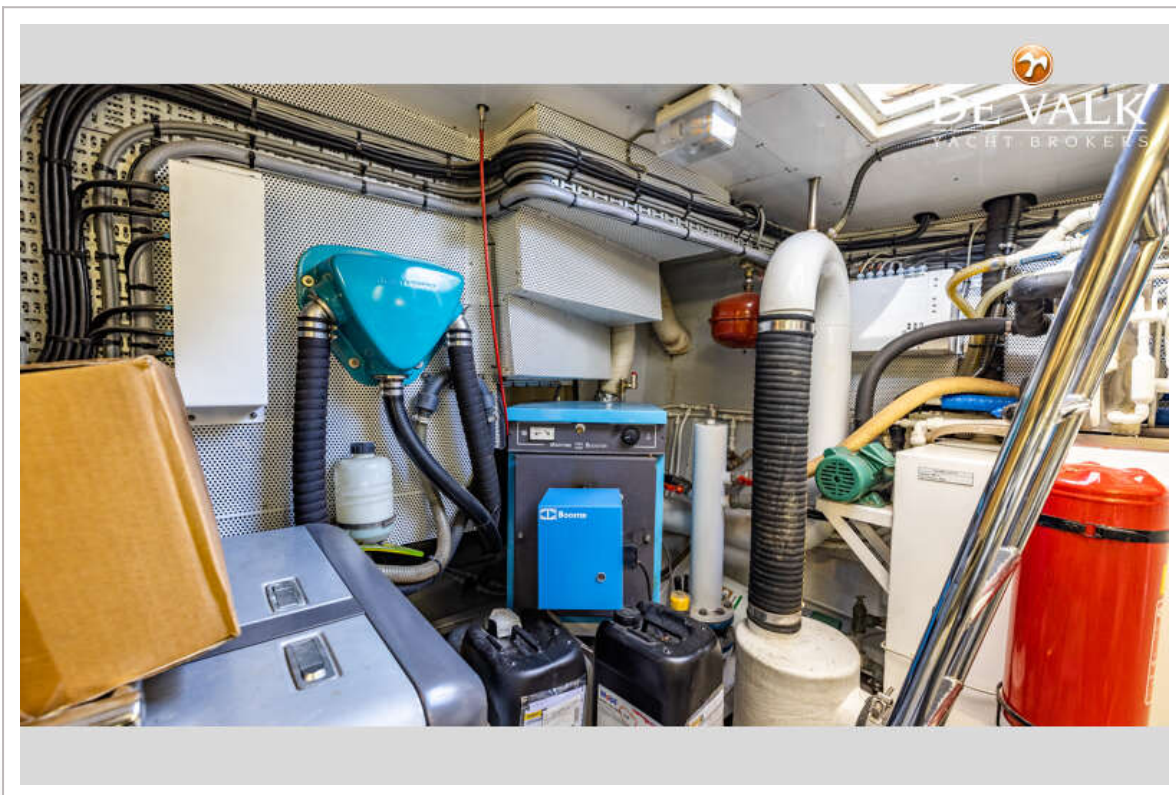
VENNEKENS TRAWLER 1800



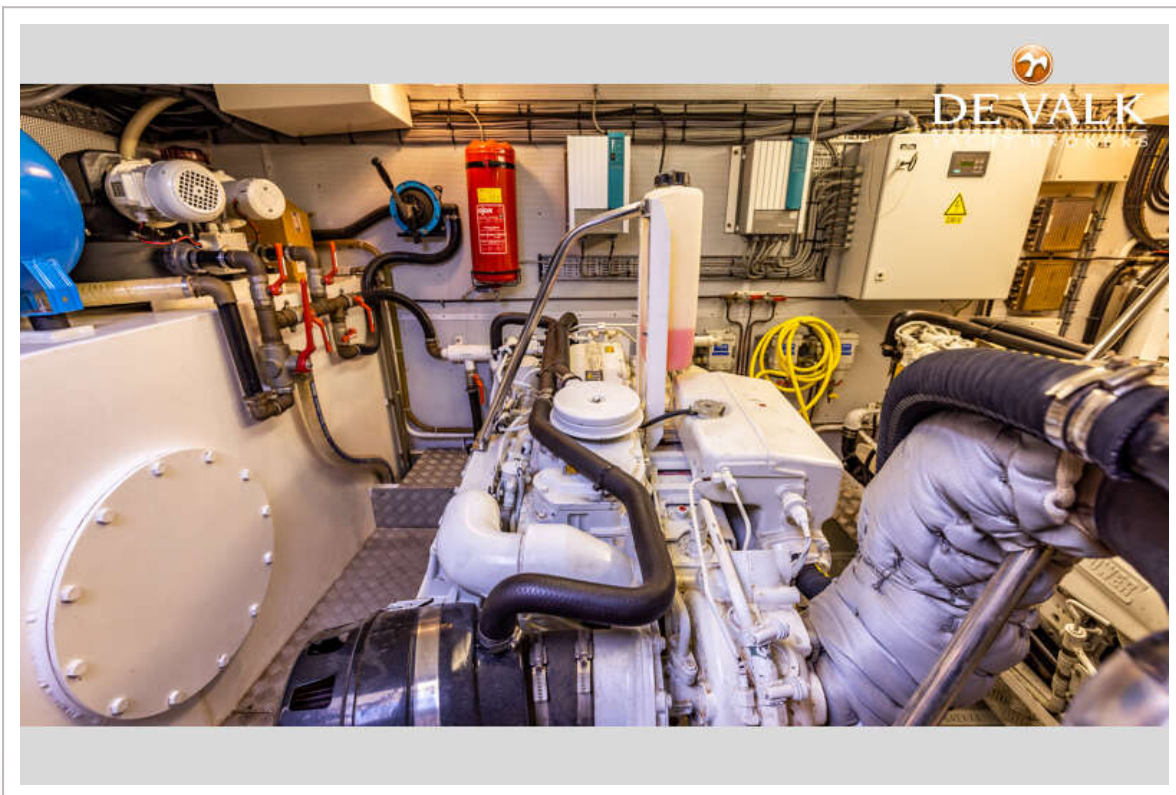
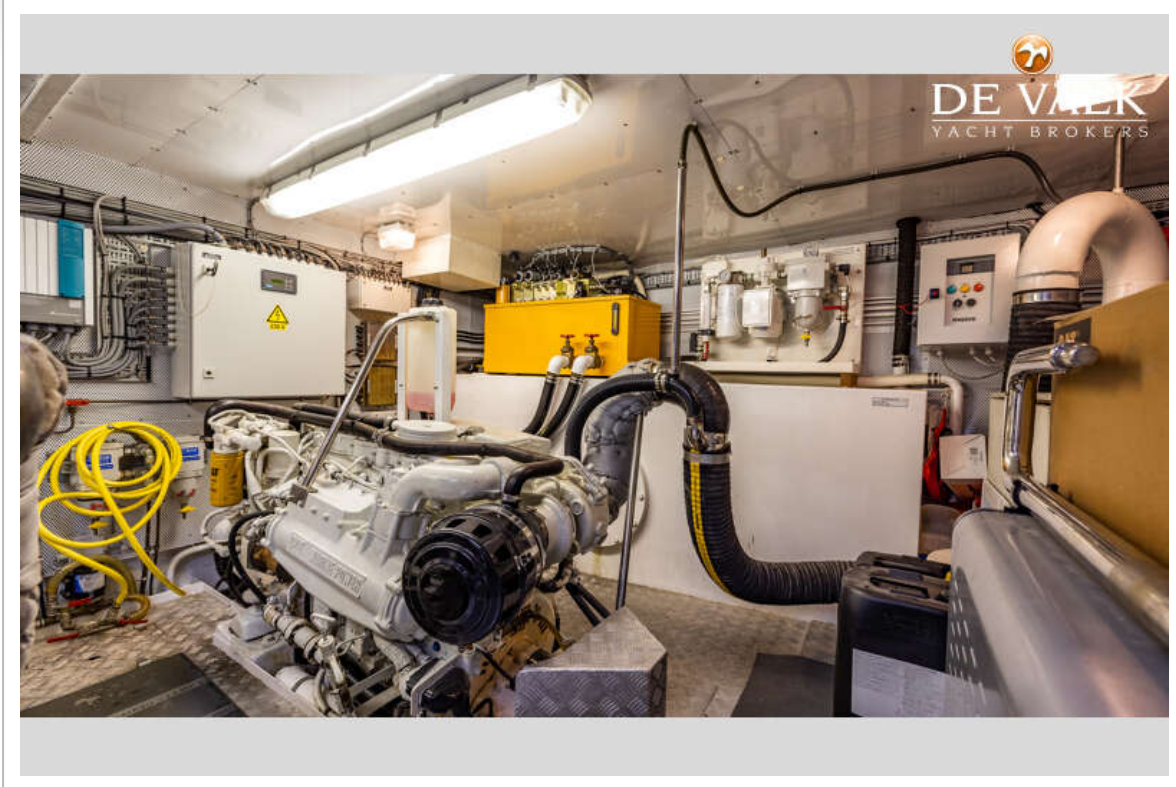
VENNEKENS TRAWLER 1800



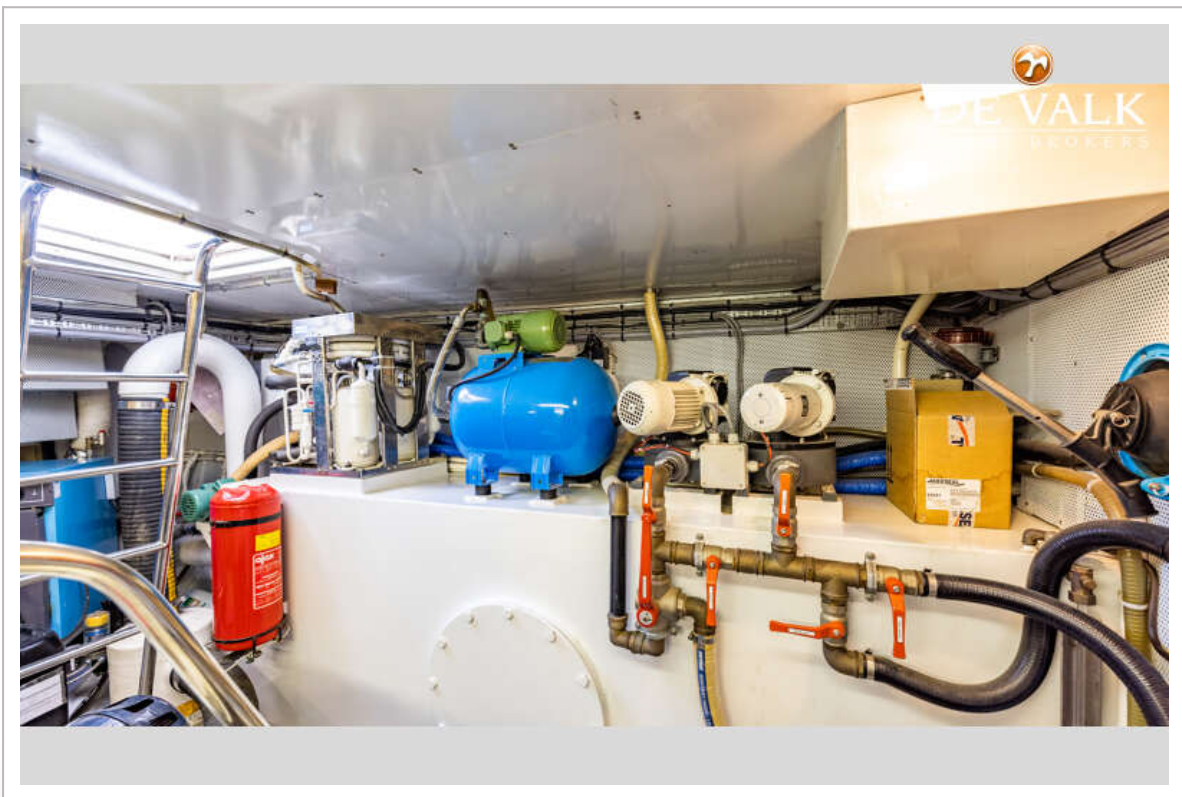
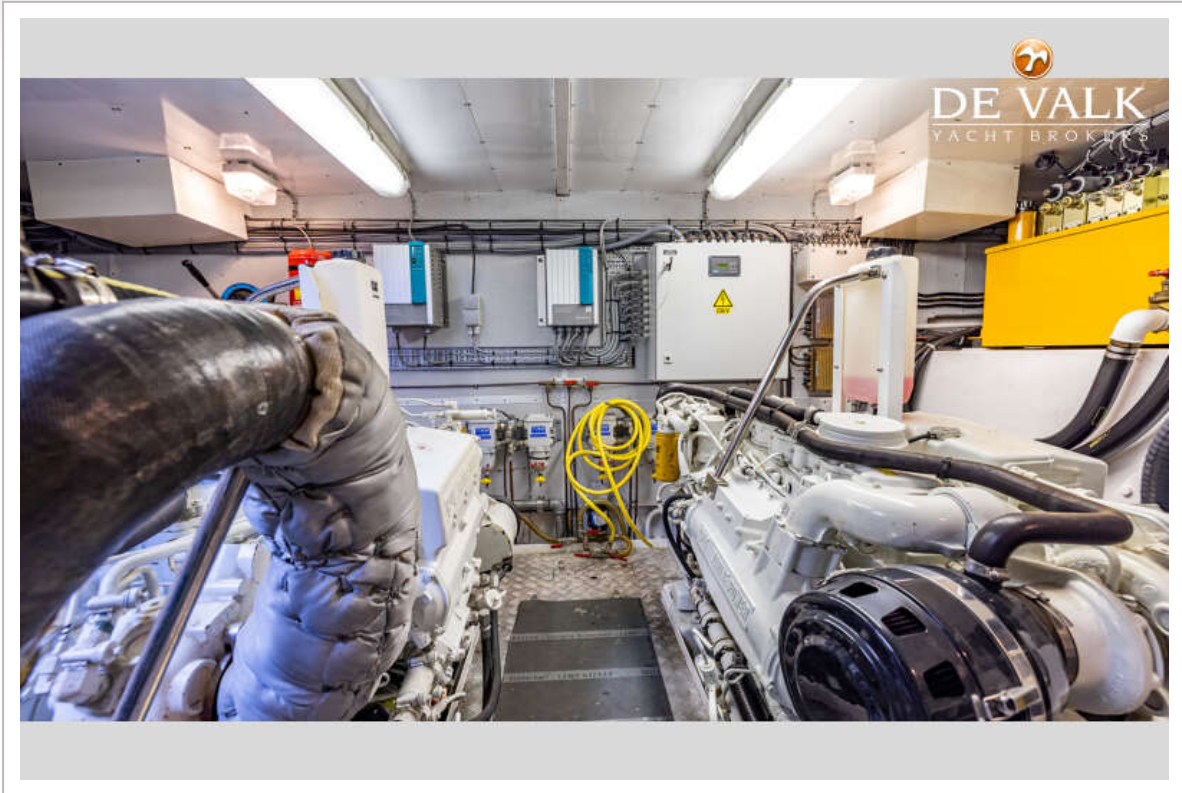
VENNEKENS TRAWLER 1800



VENNEKENS TRAWLER 1800



VENNEKENS TRAWLER 1800



VENNEKENS TRAWLER 1800

