



DE VALK
YACHT BROKERS



BARKAS 1100 OK



DE VALK
YACHT BROKERS

BROKERAGE | CHARTER | BERTHS | FINANCE | INSURANCE | YACHT MANAGEMENT

BARKAS 1100 OK

BROKER'S COMMENTS

The Barkas 1100 OK "Erewhon" is built by Consonant Yachts. She is a strong built, stable and is easy maneuvering by her two Nanni 63hp diesel engines and hydraulic bowthruster. Due the French doors of this 1100 OK you can enter the saloon easily. She will be auctioned on January 16th, 2020 in cooperation with YachtBid and BVA Auctions. For further details and viewing days go to: <http://bit.ly/Barkas1100Auction> Starting price of the auction is € 15,000,-. Offers can be made from January 9th, 2020 on the website of BVA Auctions.

Mark Hesselmans

SPECIFICATIONS

Dimensions	11.00 x 3.60 x 1.00 (m)	Builder	Consonant Yachts
Built	1997	Cabins	1
Material	Steel	Berths	4
Engine(s)	2 x Nanni 5280 HE diesel	Hp/Kw	2 x 62.00 (hp), 45.57 (kw)
Asking price	sold (VAT)	Lying	at sales office

CONTACT

Sales office	De Valk Loosdrecht B.V.	Telephone	+31 (0)35 582 90 30
Address	't Breukeleveense Meentje 6 1231LM Loosdrecht / Wijdmeren NL	E-mail	loosdrecht@devalk.nl

DISCLAIMER

These particulars are given in good faith as supplied but cannot be guaranteed.



BARKAS 1100 OK

GENERAL

Model	BARKAS 1100 OK
Type	motor yacht
LOA (m)	11,00
Beam (m)	3,60
Draft (m)	1,00
Air draft (m)	2,53
Headroom (m)	1,90
Year built	1997
Builder	Consonant Yachts
Country	The Netherlands
Designer	L.M. Huitema
Displacement (t)	13
CE norm	NA
Hull material	steel
Hull colour	black
Hull shape	deep-V
Superstructure material	steel
Rubbing strake	fender rope
Deck material	steel
Deck finish	teak
Antifouling (year)	2016
Window frame	aluminium
Window material	glass
Mast can be lowered	hydraulic
Fuel tank (litre)	2x 300
Freshwater tank (litre)	2x 150
Blackwater tank (litre)	40
Wheel steering	hydraulic

ACCOMMODATION



BARKAS 1100 OK

Cabins	1
Berths	4
Open cockpit	yes
Saloon	yes
Headroom saloon (m)	1,90
Sliding roof	manual
Heating	diesel ducted hot air Webasto
Opening door to cockpit	yes
Galley	yes
Countertop	wood
Sink	stainless steel
Cooker	electric 2 burners
Extractor	yes
Fridge	yes
Hot water system	220V + engine
Water pressure system	electrical
Owners cabin	double bed
Wardrobe	hanging/drawers/shelves
Bathroom	shared
Toilet	shared
Toilet system	electric
Shower	shared
Guest cabin 1	double bed

MACHINERY

No of engines	2
Make	Nanni
Type	5280 HE
HP	62
kW	45,57
Fuel	diesel



Maximum speed (kn)	7
Cruising speed (kn)	5
Engine hours	1834
Engine cooling system	freshwater heat exchanger
Drive	shaft
Gearbox	hydraulic
Bowthruster	hydraulic Ramm
Exhaust	watercooled
Propeller type	fixed
Propeller shaft material	
Electric bilge pump	yes
Start battery	1x Varta Silverline 12V 145Ah 800A
Service battery	yes
Battery monitor	Mastervolt BTM-I
Battery charger	Mastervolt 24/50
Inverter	Mastervolt 24/3500
Shorepower	with cable

NAVIGATION

Depth sounder/log	KVH Quadro
Rudder angle indicator	Autohelm
Searchlight	yes

EQUIPMENT

Cockpit cover	yes
Bathing platform	yes
Boarding ladder	stainless steel
Anchor	
Anchor chain	yes
Windlass	electrical
Sea railing	stainless steel



BARKAS 1100 OK

Grab rail (superstructure)	stainless steel
Railing side opening gates	yes
Wiper	yes
Radio-cd player	Kenwood KRC-357N



BARKAS 1100 OK



BROKERAGE | CHARTER | BERTHS | FINANCE | INSURANCE | YACHT MANAGEMENT

DE VALK
YACHT BROKERS



**This yacht will be auctioned,
for further details please visit www.devalk.nl**

**Dit schip zal worden geveild,
voor meer informatie gaat u naar www.devalk.nl**

**Dieses Schiff wird versteigert,
für weitere informationen besuchen Sie www.devalk.nl**

WWW.DEVALK.NL



DE VALK
YACHT BROKERS



BARKAS 1100 OK



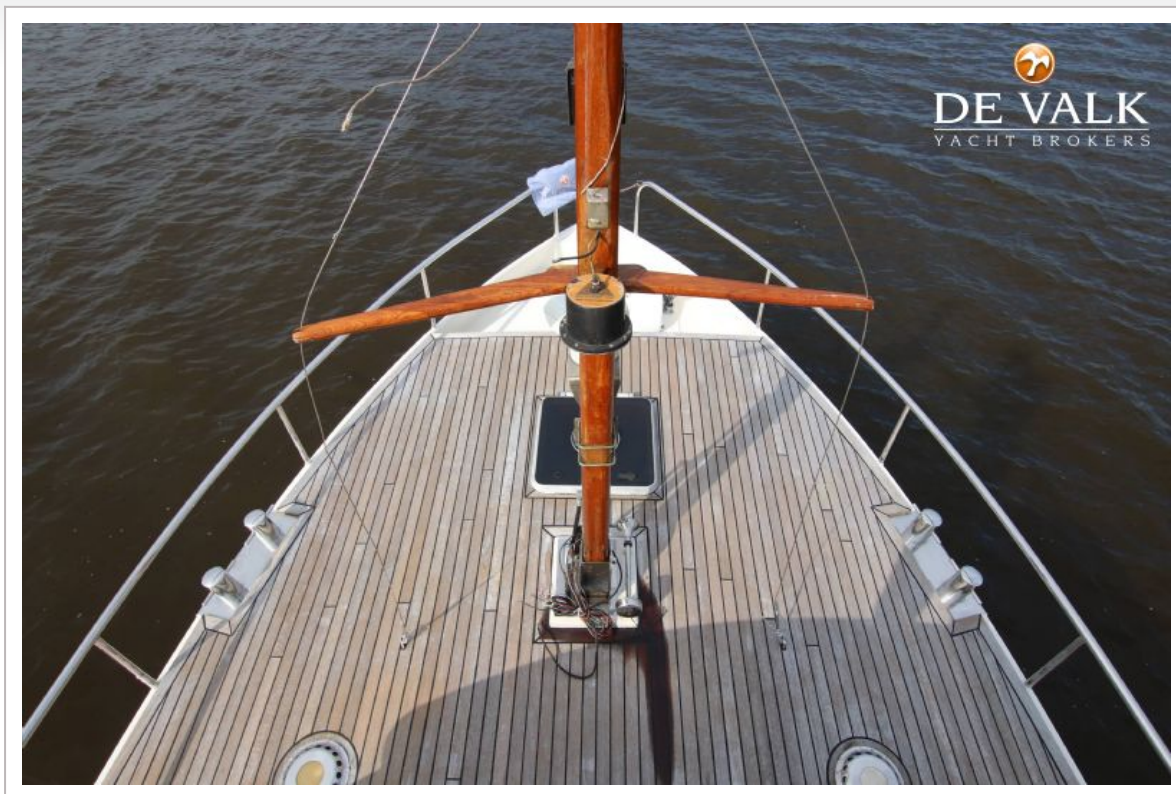
BARKAS 1100 OK



BARKAS 1100 OK



BARKAS 1100 OK



BARKAS 1100 OK



BARKAS 1100 OK



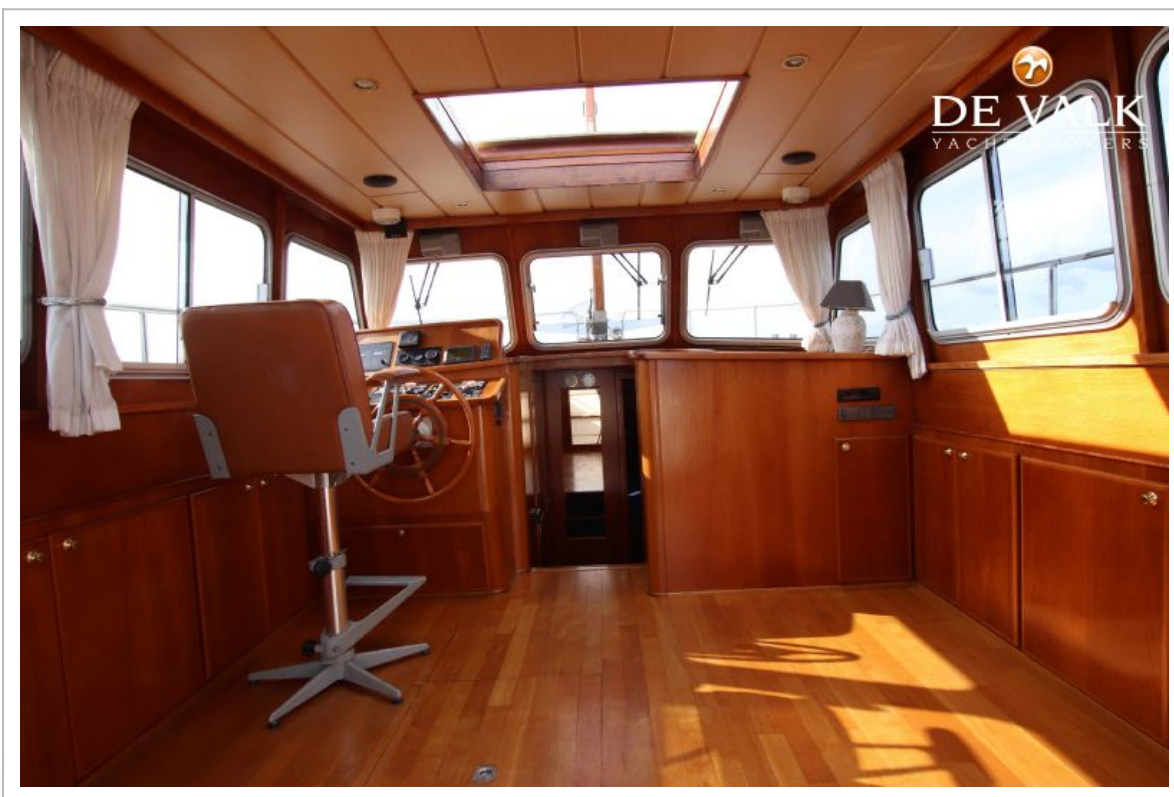
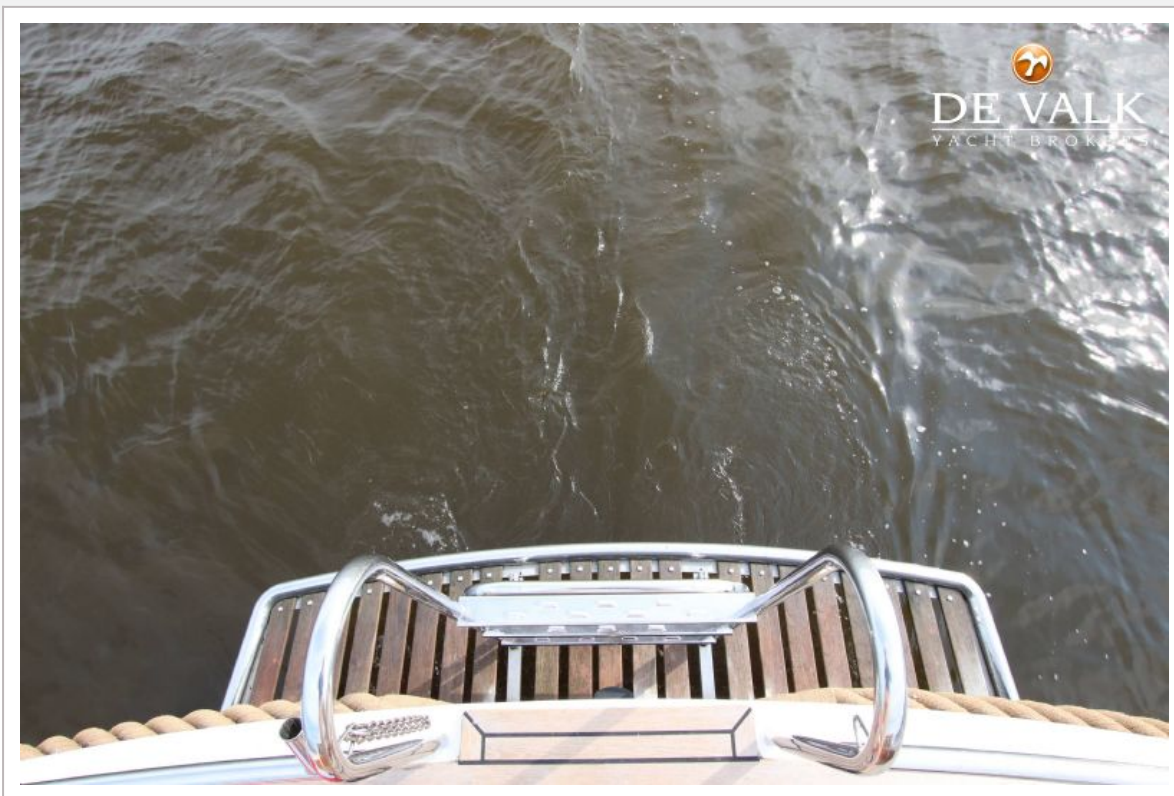
BARKAS 1100 OK



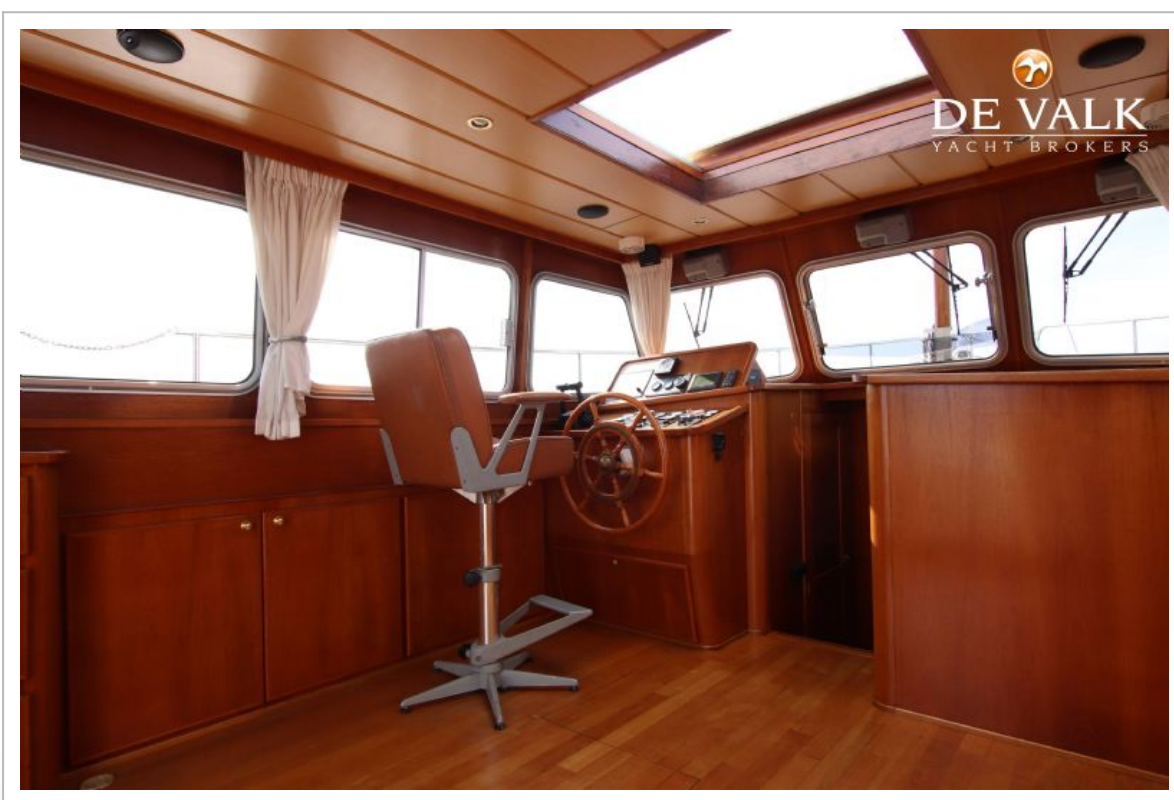
BARKAS 1100 OK



BARKAS 1100 OK



BARKAS 1100 OK



BARKAS 1100 OK



BARKAS 1100 OK



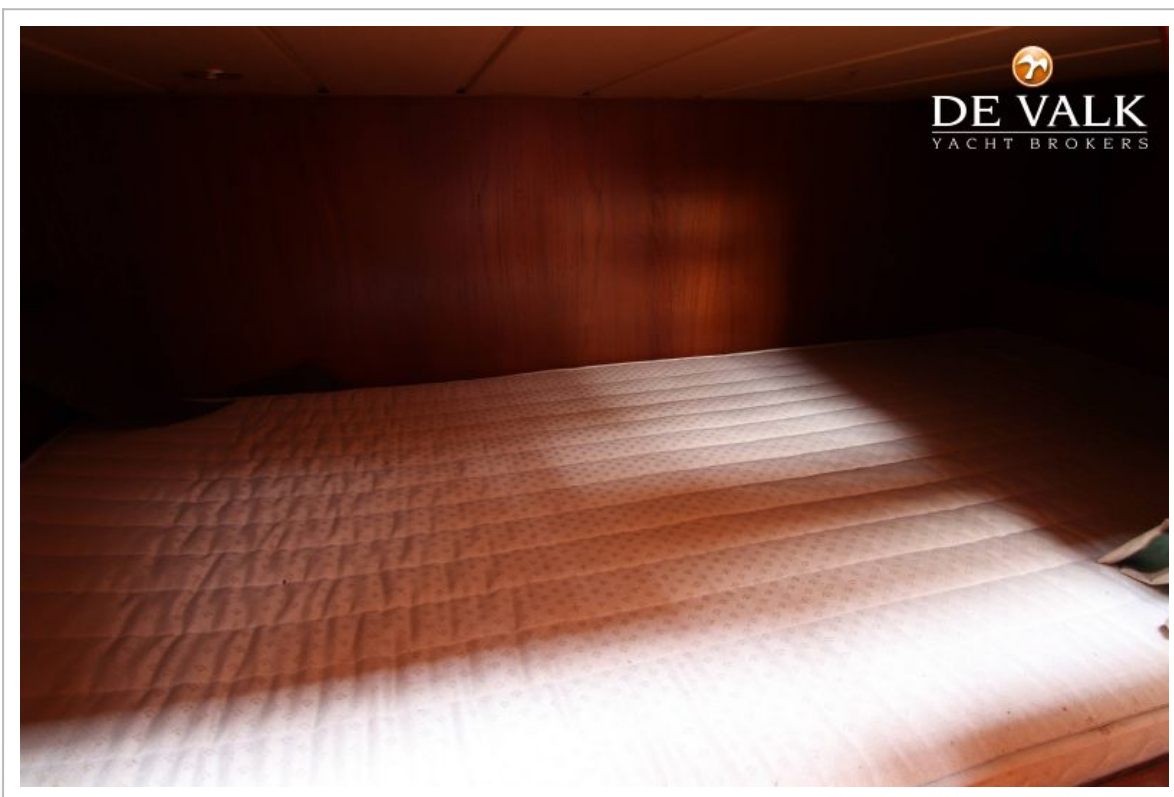
BARKAS 1100 OK



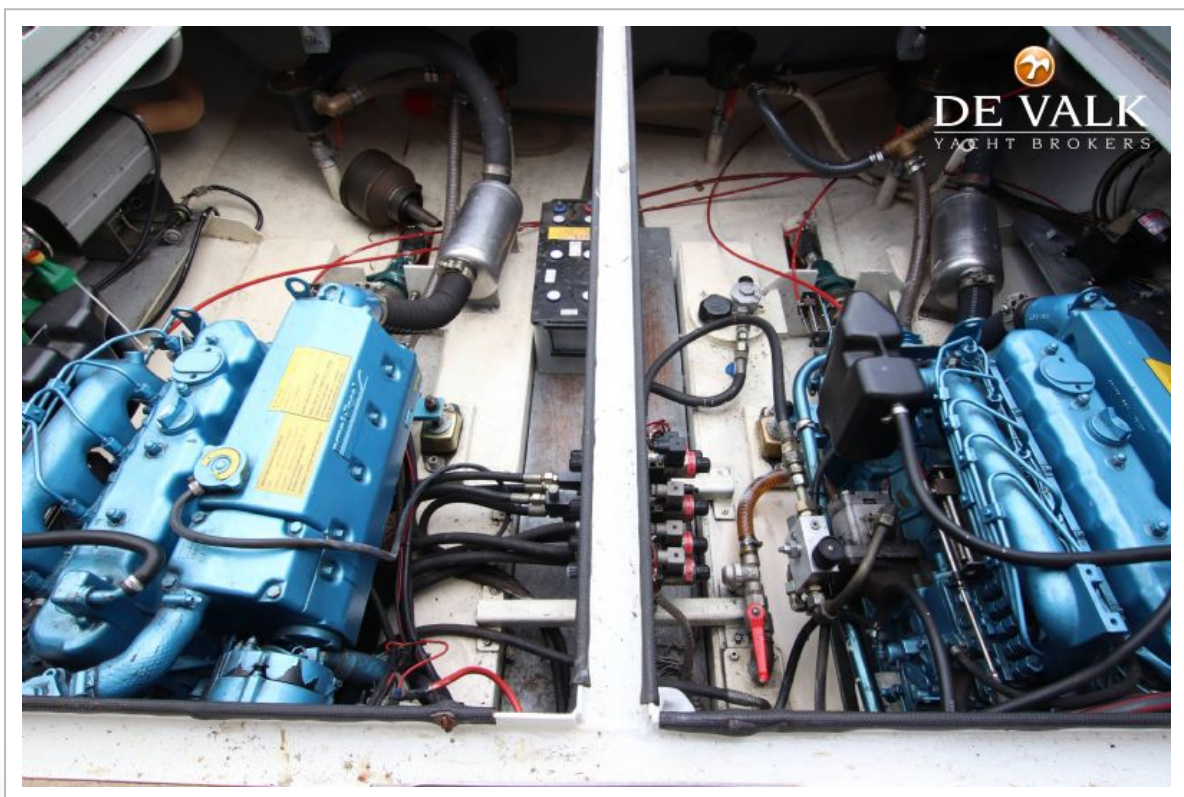
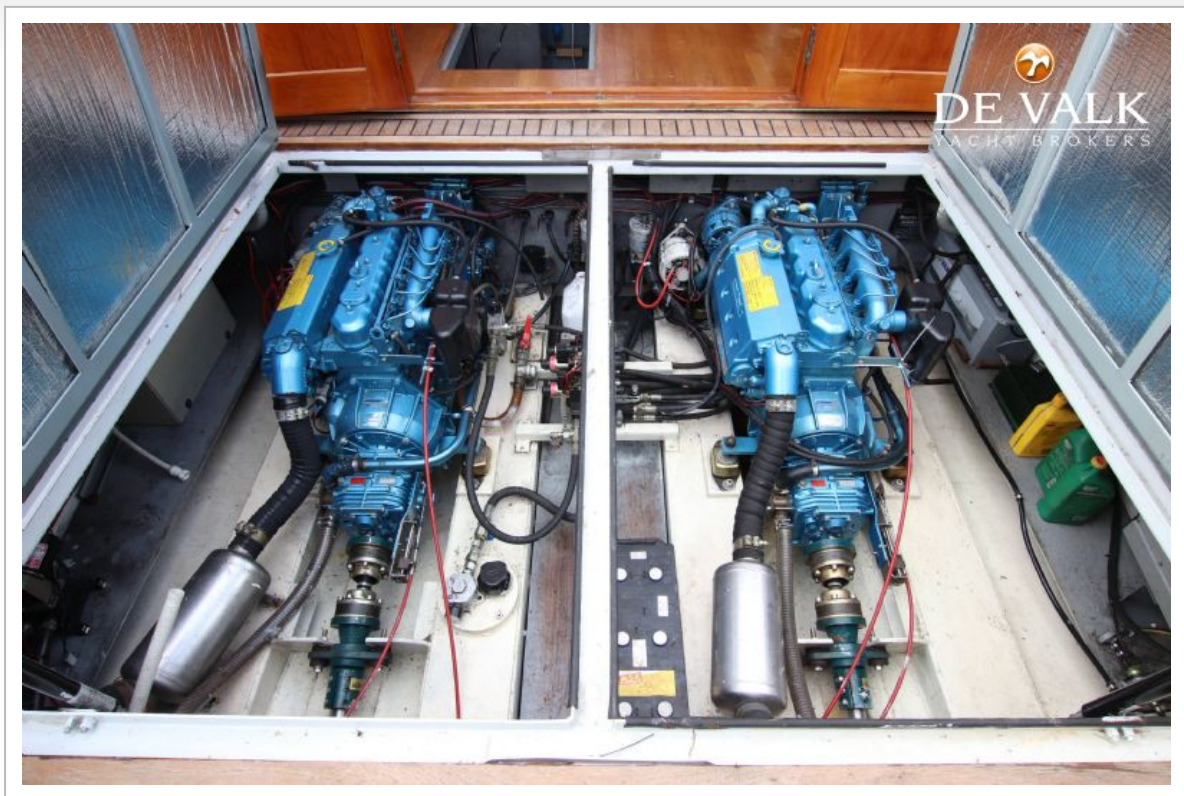
BARKAS 1100 OK



BARKAS 1100 OK



BARKAS 1100 OK



BARKAS 1100 OK

