



DE VALK
YACHT BROKERS



LINSKENS SUPERCRUISER 50



DE VALK
YACHT BROKERS

LINSKENS SUPERCRUISER 50

BROKER'S COMMENTS

Looking for a complete ship for longer stays on board? The Linskens Supercruiser 50 is a ship with full equipment. The central heating and air conditioning make the stay on board pleasant in summer and winter months. The presence of a powerful 220 hp IVECO, bow and stern thruster ensure easy manoeuvrability of this beautiful motor yacht. Are you as enthusiastic as we are? Make an appointment for a viewing on location!

Julian de Heer

SPECIFICATIONS

Dimensions	14.98 x 4.45 x 1.22 (m)	Builder	LINSKENS SHIPYARD
Built	2009	Cabins	3
Material	Steel	Berths	7
Engine(s)	1 x IVECO N67MNSM22.11 diesel	Hp/Kw	220.00 (hp), 161.92 (kw)
Asking price	sold (VAT)	Lying	at sales office

CONTACT

Sales office	De Valk Loosdrecht B.V.	Telephone	+31 (0)35 582 90 30
Address	't Breukeleveense Meentje 6 1231LM Loosdrecht / Wijdmeren NL	E-mail	loosdrecht@devalk.nl

DISCLAIMER

These particulars are given in good faith as supplied but cannot be guaranteed.



LINSKENS SUPERCRUISER 50

GENERAL

Model	LINSKENS SUPERCRUISER 50
Type	motor yacht
LOA (m)	14,98
LWL (m)	13,56
Beam (m)	4,45
Draft (m)	1,22
Air draft (m)	3,45
Headroom (m)	2,05
Year built	2009
Launched	2010
Builder	LINSKENS SHIPYARD
Country	The Netherlands
Displacement (t)	27,6
Net tonnage	23t
CE norm	C
Hull material	steel
Hull colour	off-white
Hull shape	hard chine
Superstructure material	steel
Rubbing strake	rubber
Deck material	steel
Deck finish	Flexiteak
Superstructure deck finish	paint
Cockpit deck finish	Flexiteak
Antifouling (year)	2021
Window frame	aluminium
Window material	double glazing
Deckhatch	yes
Portholes	stainless steel With insect screens
Radar arch	collapsible Electrical



LINSKENS SUPERCRUISER 50

Fuel tank (litre)	1150+/-
Level indicator (fuel tank)	Vetus
Freshwater tank (litre)	840+/-
Level indicator (freshwater)	Vetus
Blackwater tank (litre)	300+/-
Level indicator (blackwater)	Vetus
Wheel steering	hydraulic
Outside helm position	yes

ACCOMMODATION

Cabins	3
Berths	7
Interior	yes
Floor	carpet
Aft deck	yes
Saloon	yes
Headroom saloon (m)	2,05 +/-
Heating	central heating Kabola 14Kw
Air-conditioning	Seamach in master cabin
Aft Cabin	yes
Dinette to convert into berth	yes
Galley	yes
Countertop	granite
Sink	stainless steel
Cooker	Baumatic 3 Burners
Microwave	Baumatic
Fridge	1x Isotherm, 1x Siemens
Freezer	In fridge
Hot water system	on central heating
Water pressure system	electrical
Owners cabin	double bed



LINSKENS SUPERCRUISER 50

Wardrobe	hanging/drawers/shelves
Bathroom	en suite
Toilet	yes
Toilet system	electric
Shower	en suite
Guest cabin 1	v-bed
Wardrobe	yes
Toilet	en suite
Toilet system	electric
Wash basin	at the toilet
Guest cabin 2	single bed
Wardrobe	shelves
Extra info	Led lights in superstructure and aftdeck ladder
Washing machine/dryer combi	Indesit

MACHINERY

No of engines	1
Make	IVECO
Type	N67MNSM22.11
HP	220
kW	161.92
Fuel	diesel
Maximum speed (kn)	7
Cruising speed (kn)	5
Engine hours	1348
Engine cooling system	freshwater heat exchanger
Drive	shaft
Engine controls	electrical
Gearbox	hydraulic
Bowthruster	electric Side Power with remote
Sternthruster	electric Side Power with remote



LINSKENS SUPERCRUISER 50

Exhaust	watercooled
Propeller type	fixed
Propeller blades	5
Propeller shaft material	stainless steel
Electric bilge pump	yes
Electrical installation	yes
Generator	wet exhaust Onan 11Kw
Batteries	yes
Start battery	yes
Service battery	yes
Bowthruster battery	yes
Battery monitor	Victron energy
Battery charger	yes
Battery charger/inverter	Victron Energy 23/3000/70
Insulation transformer	Victron Energy 3600

NAVIGATION

Depth sounder/log	Raymarine St60
VHF	Raymarine Ray240E
Rudder angle indicator	Raymarine St60
Plotter	Raymarine E30
Navigation lights	yes

EQUIPMENT

Cockpit cover	Full cover for the aftdeck replaced in 2020
Window cover	Around all salon Windows with Magnets
Cockpit cushions	yes
Cockpit table	yes
Cockpit chairs	yes
Bathing platform	yes
Boarding ladder	stainless steel



LINSKENS SUPERCRUISER 50

Deck shower	yes
Anchor	yes
Anchor chain	yes
Windlass	Lofrance
Sea railing	stainless steel
Grab rail (superstructure)	stainless steel
Railing side opening gates	yes
Wiper	yes
Horn	yes
Fenders	yes
Mooring lines	yes
TV	3x



LINSKENS SUPERCUISE 50



LINSKENS SUPERCUISE 50



LINSKENS SUPERCRUISER 50



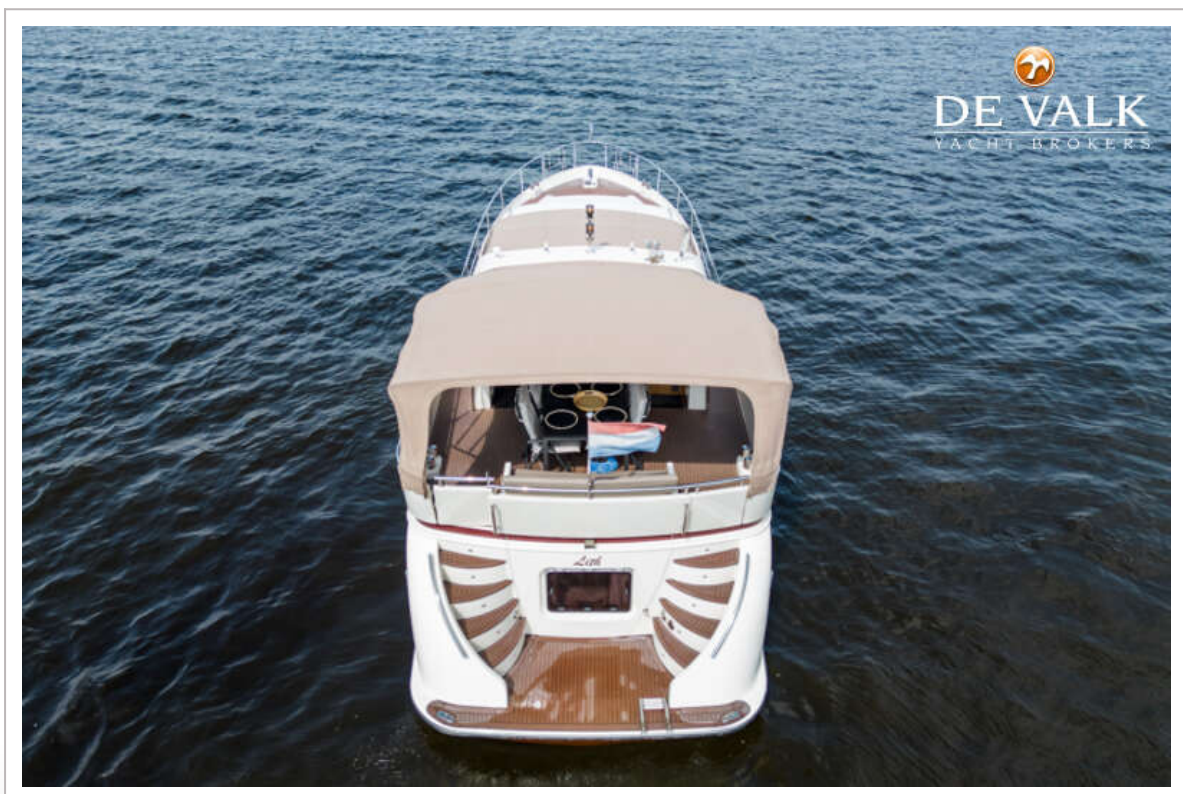
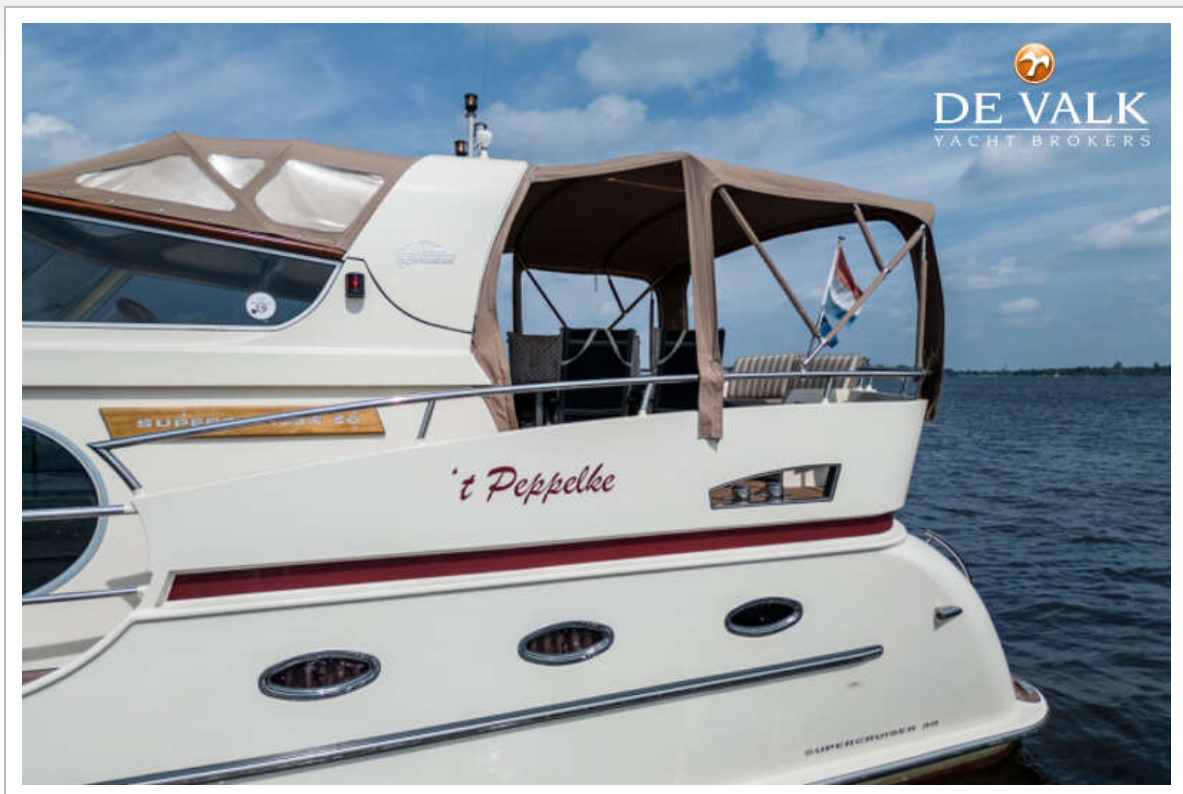
LINSKENS SUPERCRUISER 50



LINSKENS SUPERCRUISER 50



LINSKENS SUPERCUISE 50



LINSKENS SUPERCRUISER 50



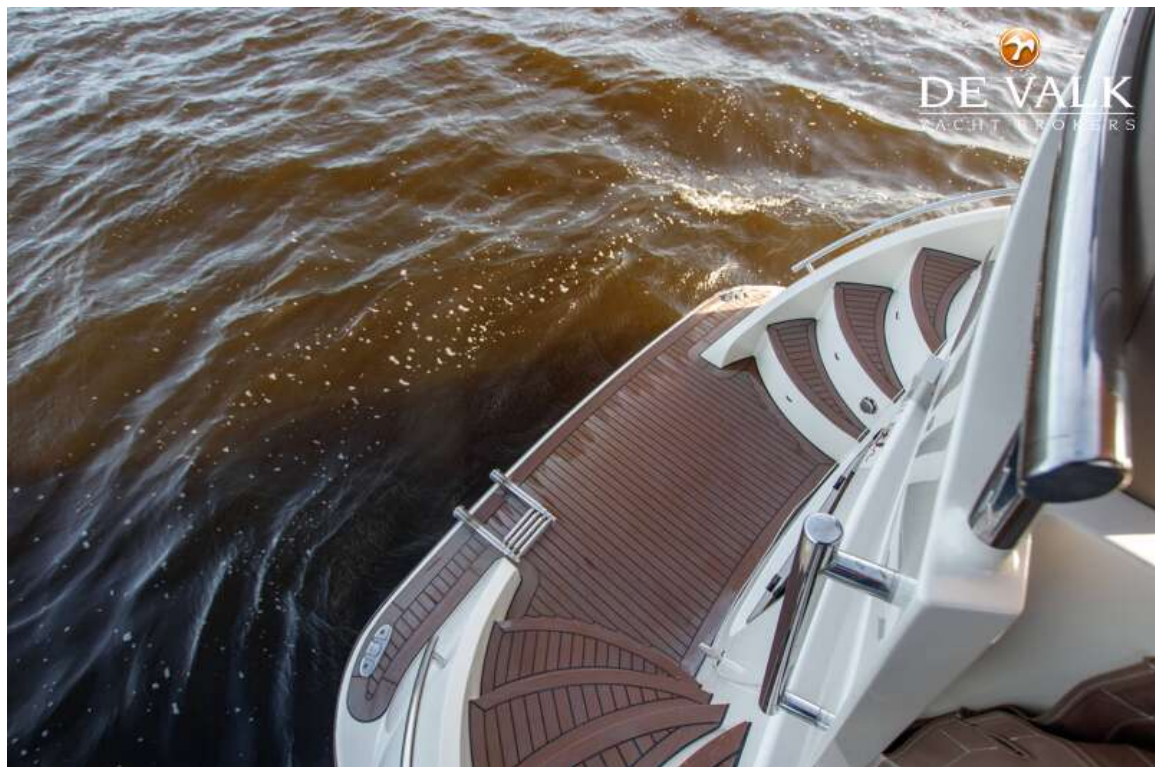
LINSKENS SUPERCRUISER 50



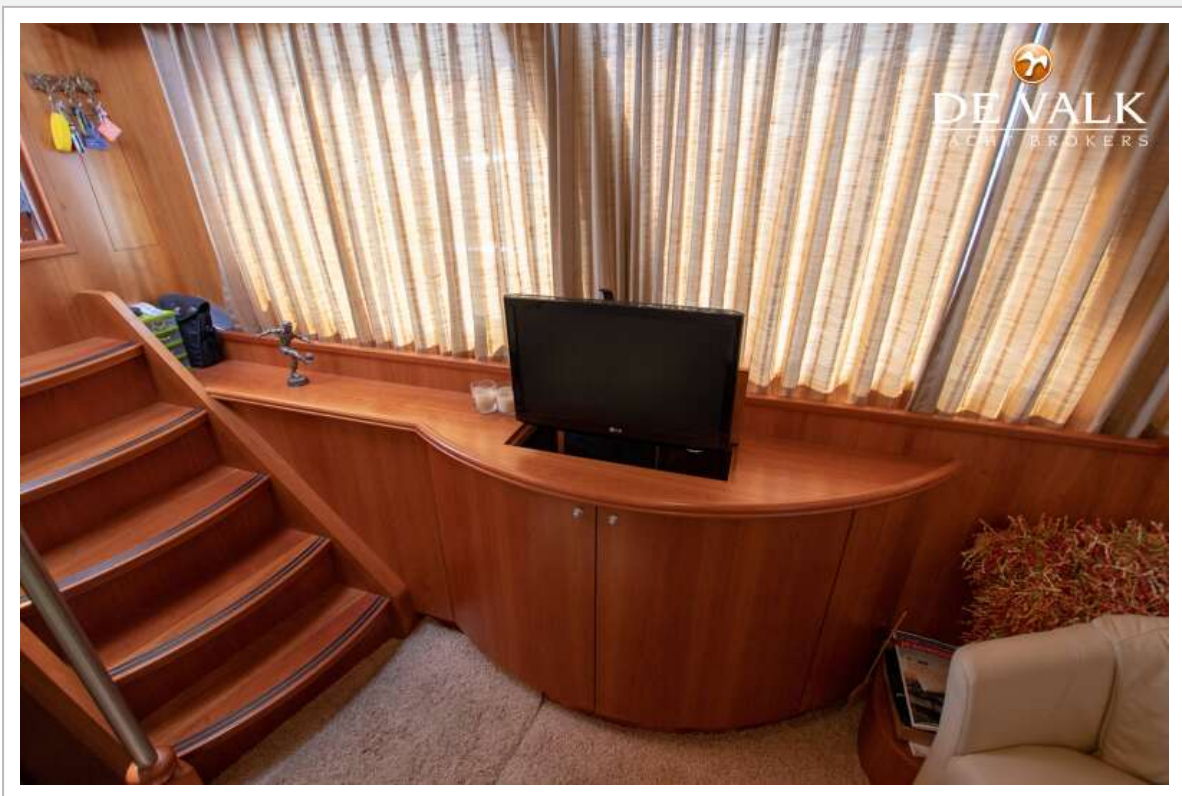
LINSKENS SUPERCRUISER 50



LINSKENS SUPERCRUISER 50



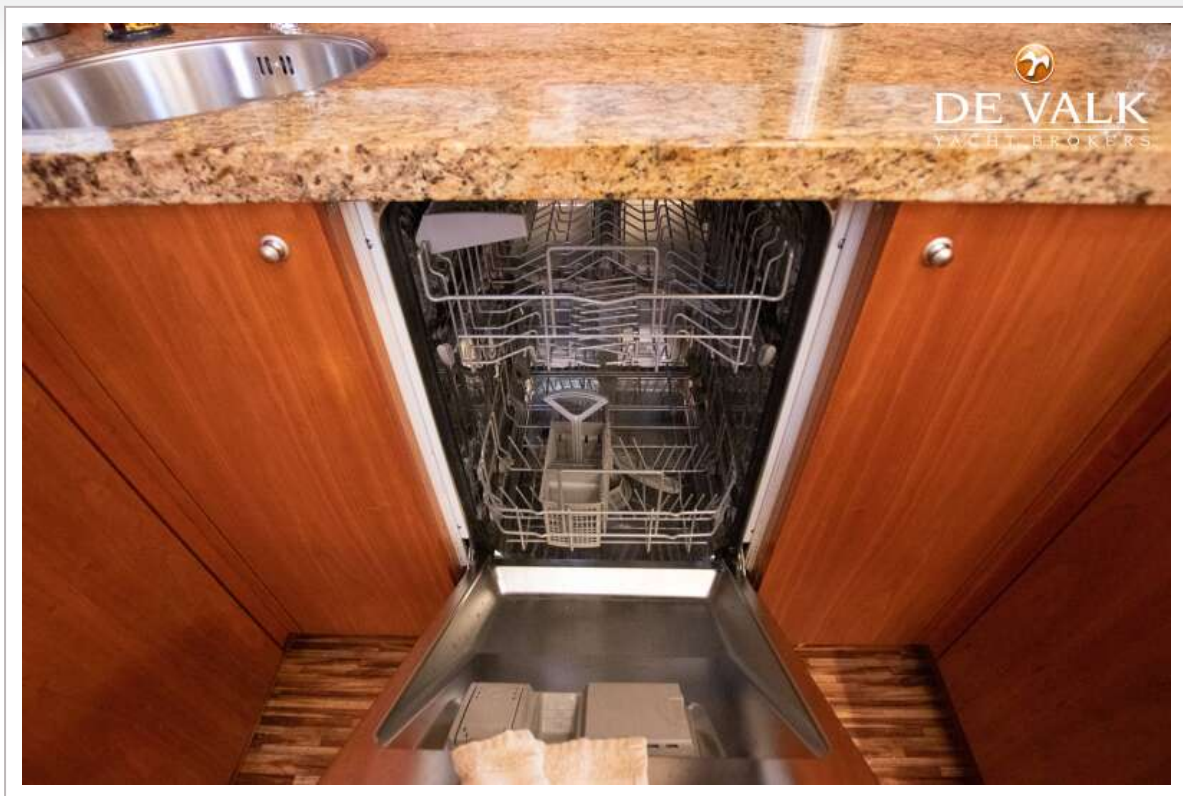
LINSKENS SUPERCUISE 50



LINSKENS SUPERCUISE 50



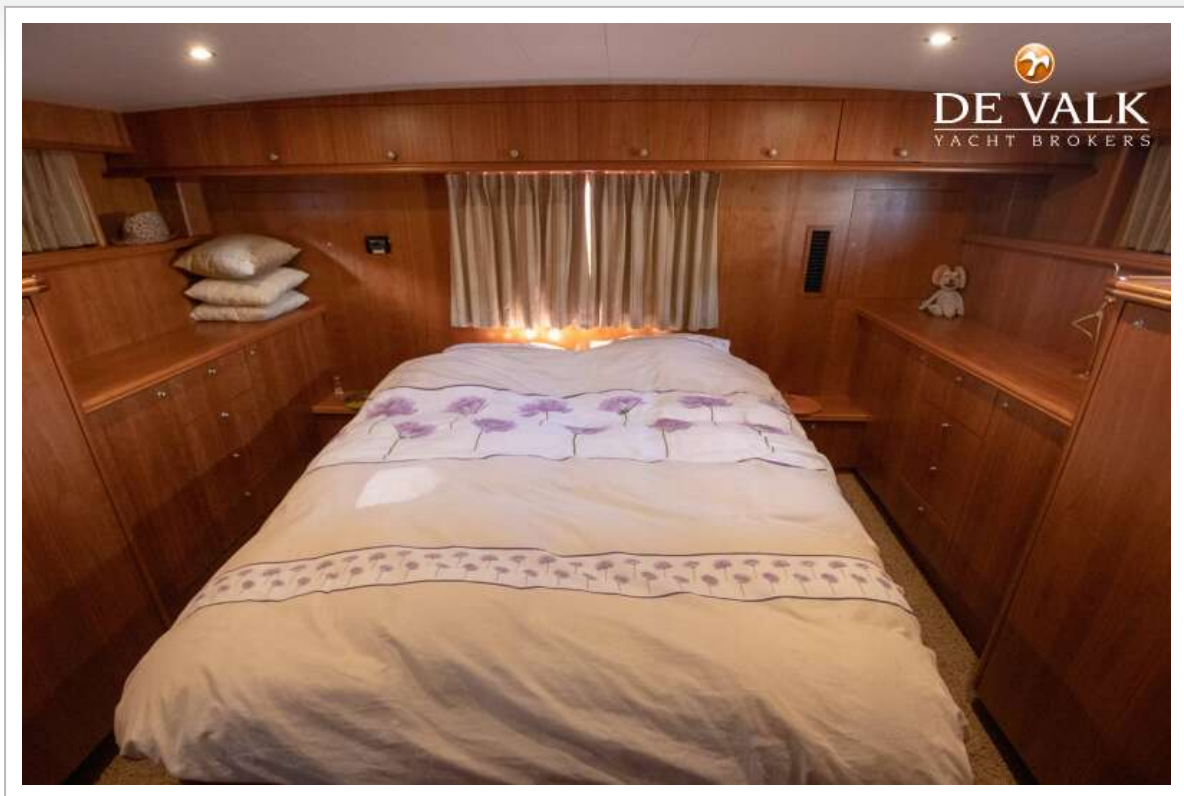
LINSKENS SUPERCRUISER 50

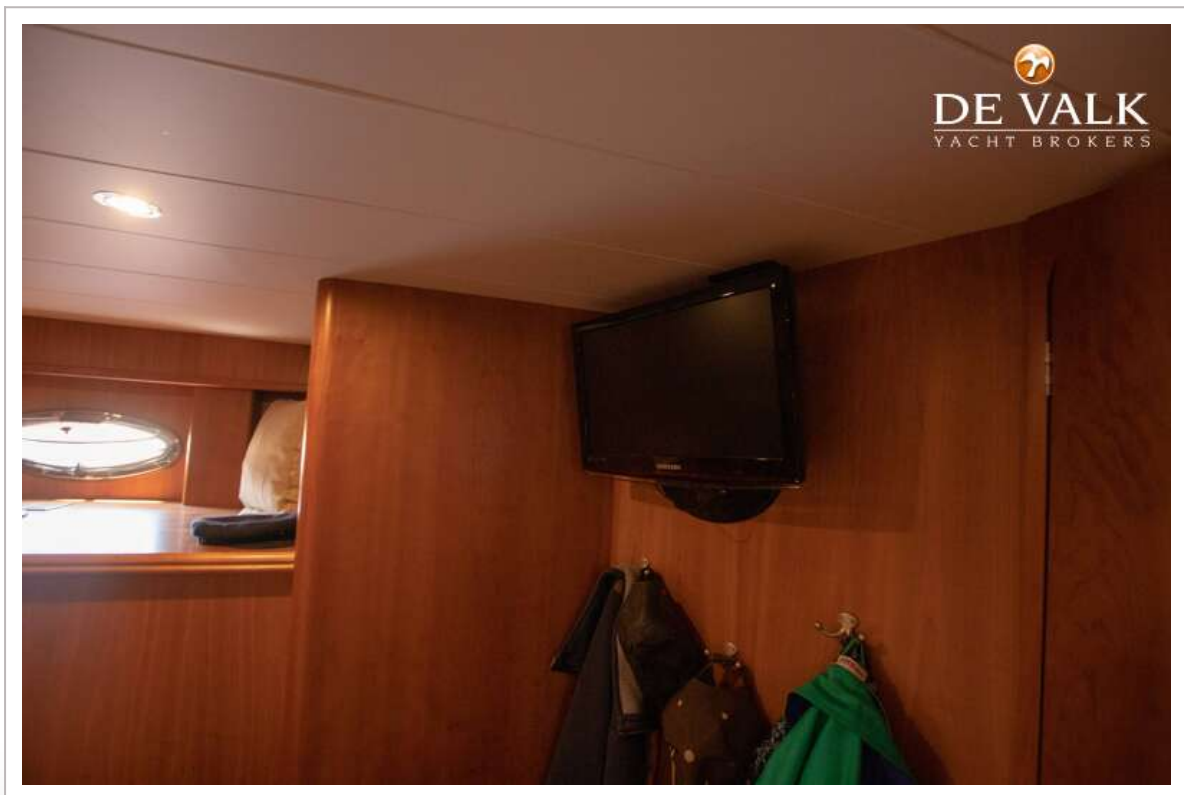
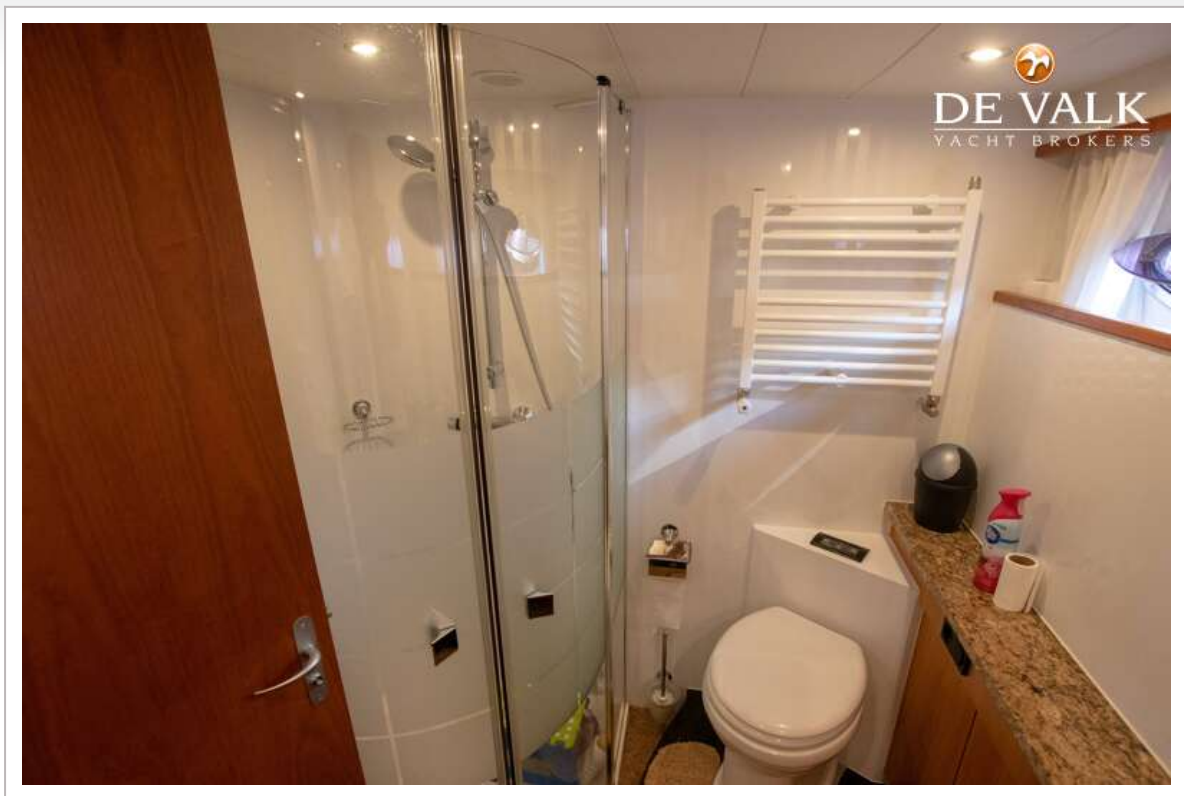


LINSKENS SUPERCRUISER 50

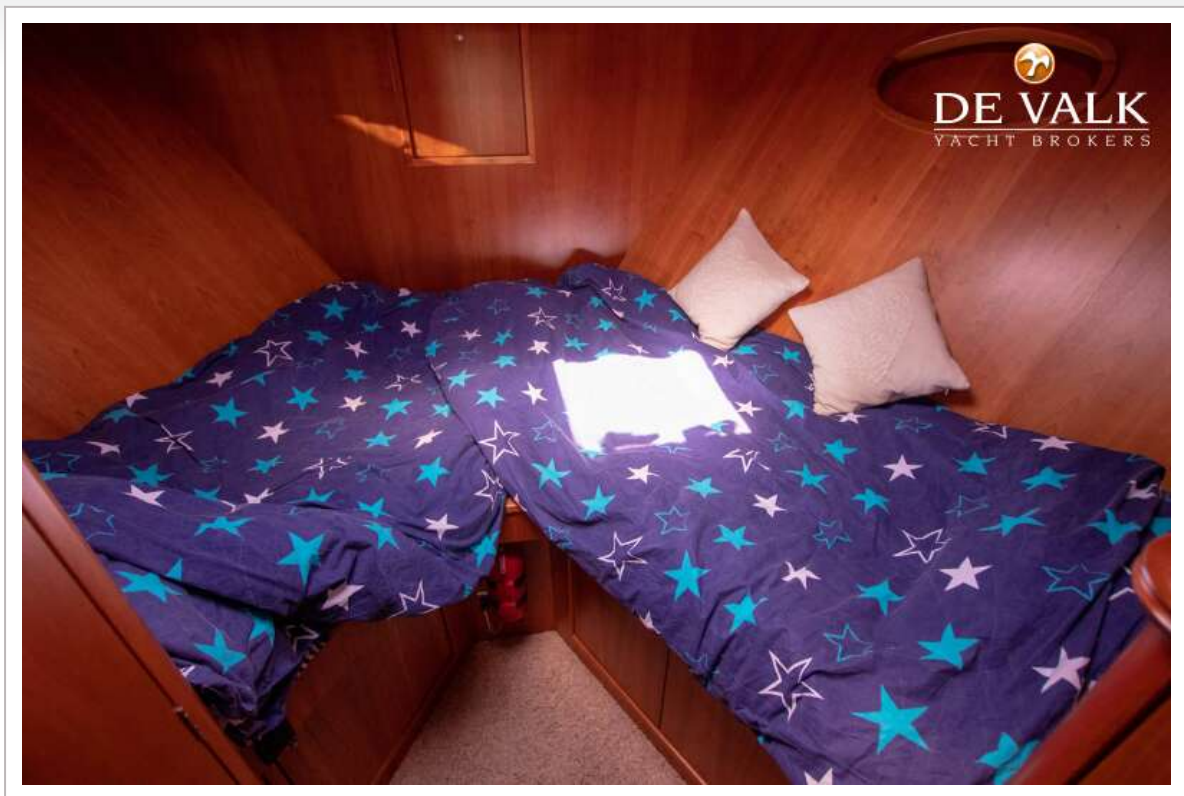


LINSKENS SUPERCUISE 50





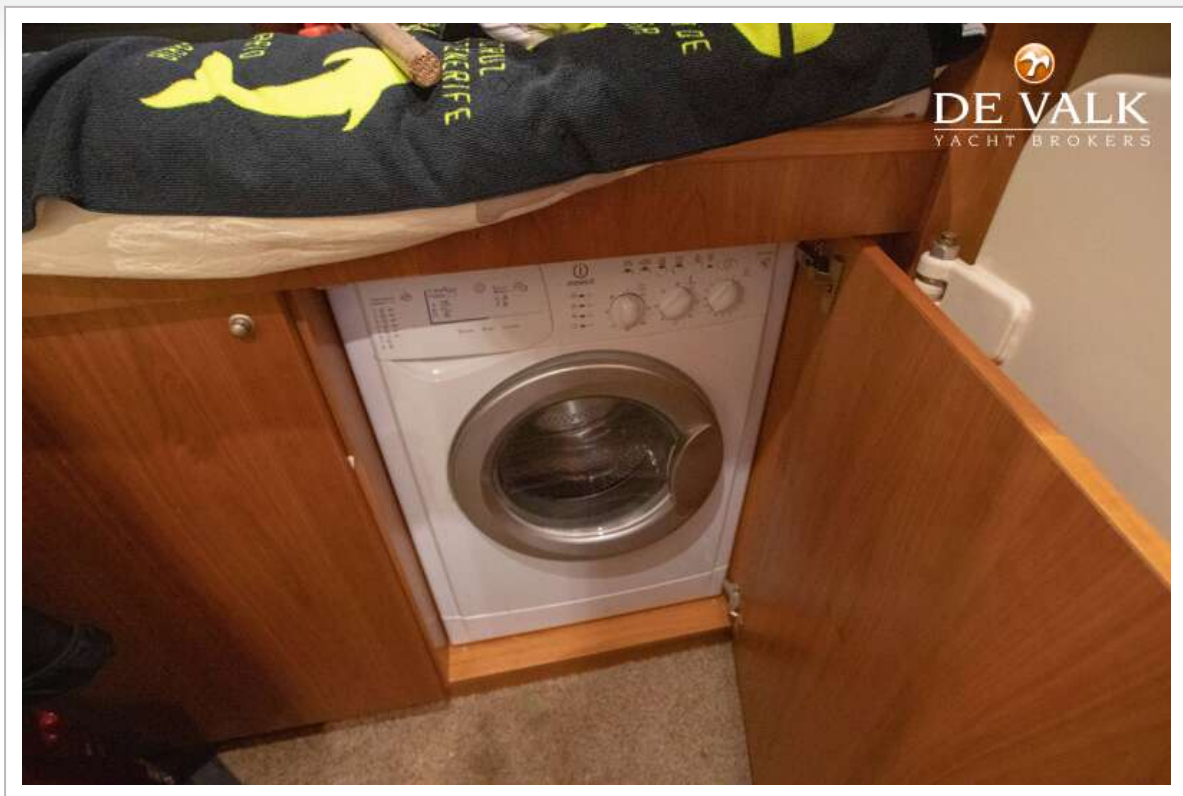
LINSKENS SUPERCUISE 50



LINSKENS SUPERCUISE 50



LINSKENS SUPERCUISE 50



LINSKENS SUPERCRUISER 50

