



## SUPER VAN CRAFT 1470



# SUPER VAN CRAFT 1470

## BROKER'S COMMENTS

The Super van Craft is one of the best known models in Dutch quality yacht building. This Super van Craft 14.70 represents a partly restored model that needs finishing in the technical installation. This Super van Craft 14.70 offer all the comfort for a longer stay aboard. This Vessel shall be sold in cooperation with BVA-auctions and Yachtbid.com. The startbid shall be EUR. 50.000,- <https://bit.ly/SVC1470> .

*Mark Hesselmans*

## SPECIFICATIONS

|                     |                         |                |                              |
|---------------------|-------------------------|----------------|------------------------------|
| <b>Dimensions</b>   | 14.70 x 4.30 x 1.25 (m) | <b>Builder</b> | B. Klaassen & zn.            |
| <b>Built</b>        | 1989                    | <b>Cabins</b>  | 2                            |
| <b>Material</b>     | Steel                   | <b>Berths</b>  | 4                            |
| <b>Engine(s)</b>    | 2 x DAF 825 diesel      | <b>Hp/Kw</b>   | 2 x 160.00 (hp), 117.60 (kw) |
| <b>Asking price</b> | sold (VAT )             | <b>Lying</b>   | at sales office              |

## CONTACT

|                     |  |                  |                      |
|---------------------|--|------------------|----------------------|
| <b>Sales office</b> | De Valk Loosdrecht B.V.  | <b>Telephone</b> | +31 (0)35 582 90 30  |
| <b>Address</b>      | 't Breukeleveense Meentje 6<br>1231LM Loosdrecht / Wijdmeren<br>NL | <b>E-mail</b>    | loosdrecht@devalk.nl |

## DISCLAIMER

These particulars are given in good faith as supplied but cannot be guaranteed.



# SUPER VAN CRAFT 1470

## GENERAL

|                              |  |
|------------------------------|--|
| Model                        | SUPER VAN CRAFT 1470                         |
| Type                         | motor yacht                                  |
| LOA (m)                      | 14,70  |
| Beam (m)                     | 4,30   |
| Draft (m)                    | 1,25   |
| Air draft (m)                | 3,80   |
| Air draft min (m)            | 2,70   |
| Year built                   | 1989   |
| Builder                      | B. Klaassen & zn.                            |
| Country                      | The Netherlands                              |
| Designer                     | Klaassen                                     |
| CE norm                      | NA   |
| Hull material                | steel  |
| Hull colour                  | white  |
| Hull thickness (mm)          | 4, 5 & 6 mm                                  |
| Keel type                    | box keel                                     |
| Superstructure material      | wood   |
| Rubbing strake               | steel  |
| Deck material                | steel  |
| Deck finish                  | teak Sanded, some plugs and screws missing   |
| Superstructure deck finish   | paint  |
| Cockpit deck finish          | teak   |
| Antifouling (year)           | Blisters in paintsystem also below waterline |
| Window material              | double glazing In Salon                      |
| Deckhatch                    | yes  |
| Portholes                    |  |
| Radar arch                   | collapsible                                  |
| Fuel tank (litre)            |  |
| Freshwater tank (litre)      |  |
| Level indicator (freshwater) | Not connected                                |



# SUPER VAN CRAFT 1470

|                         |                             |
|-------------------------|-----------------------------|
| Blackwater tank (litre) | Installation incomplete     |
| Greywater tank (litre)  | Incomplete installation     |
| Wheel steering          | chain steering              |
| Outside helm position   |                             |
| More info on hull       | Salt Water anodes installed |

## ACCOMMODATION

|                         |  |
|-------------------------|--|
| Cabins                  | 2  |
| Berths                  | 4  |
| Interior                | Partely renewed  |
| Floor                   | carpet 2020  |
| Saloon                  | yes  |
| Headroom saloon (m)     | 2,00 +/-   |
| Sliding roof            | manual   |
| Heating                 | diesel ducted hot air Eberspacher, not functional              |
| Dinette                 | yes  |
| Opening door to cockpit | yes  |
| Galley                  | yes  |
| Countertop              |  |
| Sink                    | stainless steel  |
| Cooker                  | electric 4 burner not connected                                |
| Fridge                  | New but not installed  |
| Hot water system        | New boiler but not integrated in system                        |
| Water pressure system   | Water system not in function (new hydrofoor but not installed) |
| Owners cabin            | French bed   |
| Wardrobe                | hanging/drawers/shelves  |
| Bathroom                | en suite   |
| Toilet                  | en suite   |
| Toilet system           | Not Connected  |
| Wash basin              | at the toilet  |
| Shower                  | en suite   |



# SUPER VAN CRAFT 1470

|                             |                             |
|-----------------------------|-----------------------------|
| Extra info                  | With Juwel safe             |
| Guest cabin 1               | v-bed                       |
| Wardrobe                    | shelves                     |
| Bathroom                    | separate                    |
| Toilet                      | separate                    |
| Toilet system               | Not connected               |
| Wash basin                  | in the bathroom             |
| Shower                      | separate                    |
| Washing machine/dryer combi | yes                         |
| Extra info                  | Small leakage from the deck |
| Extra info                  | yes                         |

## MACHINERY

|                         |                                  |
|-------------------------|----------------------------------|
| No of engines           | 2                                |
| Make                    | DAF                              |
| Type                    | 825                              |
| HP                      | 160                              |
| kW                      | 117,60                           |
| Fuel                    | diesel                           |
| Engine cooling system   | freshwater heat exchanger        |
| Drive                   | shaft                            |
| Shaft seal              | Small leak                       |
| Engine controls         | bowden cable Needs adjusting     |
| Gearbox                 | hydraulic Twin Disc MG505-1      |
| Bowthruster             | electric Defect                  |
| Exhaust                 | Small leaks on through hull      |
| Propeller type          | fixed                            |
| Propeller blades        | Tips have small damages          |
| Electric bilge pump     | yes                              |
| Electrical installation | Part renewed, part not connected |
| Batteries               | yes                              |



# SUPER VAN CRAFT 1470

|                          |  |
|--------------------------|--|
| Start battery            | yes                                      |
| Service battery          | yes                                      |
| Battery monitor          | yes                                      |
| Battery charger          | Victron Skylla                           |
| Battery charger/inverter | Victron Quattro                          |
| Diode battery combiners  | yes                                      |
| Shorepower               | with cable                               |
| Insulation transformer   | Victron 7000 wat                         |
| Extra info               | Some underwatrhoses of not approved type |

## NAVIGATION

|                   |                       |
|-------------------|-----------------------|
| Compass           | Plastimo offshore 105 |
| Depth sounder/log | Not functional        |
| Autopilot         | Not functional        |
| Plotter           | Not functional        |

## EQUIPMENT

|                            |   |
|----------------------------|---|
| Sprayhood                  | 2018  |
| Cockpit cushions           | 2020  |
| Bathing platform           | yes   |
| Boarding ladder            | aluminum  |
| Anchor                     |   |
| Anchor chain               | yes   |
| Windlass                   | manual Electrical system defect, chain does not fit |
| Davits                     |   |
| Davits controls            | manual  |
| Sea railing                |   |
| Railing side opening gates | yes   |
| Wiper                      | Not functional                                      |
| Horn                       | Not functional                                      |
| Fenders                    | yes   |



# SUPER VAN CRAFT 1470

|                  |                |
|------------------|----------------|
| Mooring lines    | yes            |
| Radio            | Not functional |
| Cockpit speakers | yes            |



# SUPER VAN CRAFT 1470



BROKERAGE | CHARTER | BERTHS | FINANCE | INSURANCE | YACHT MANAGEMENT  
**DE VALK**  
YACHT BROKERS



**This yacht will be auctioned,  
for further details please visit [www.devalk.nl](http://www.devalk.nl)**

**Dit schip zal worden geveild,  
voor meer informatie gaat u naar [www.devalk.nl](http://www.devalk.nl)**

**Dieses Schiff wird versteigert,  
für weitere informationen besuchen Sie [www.devalk.nl](http://www.devalk.nl)**

[WWW.DEVALK.NL](http://WWW.DEVALK.NL)



**DE VALK**  
YACHT BROKERS





# SUPER VAN CRAFT 1470



# SUPER VAN CRAFT 1470





# SUPER VAN CRAFT 1470

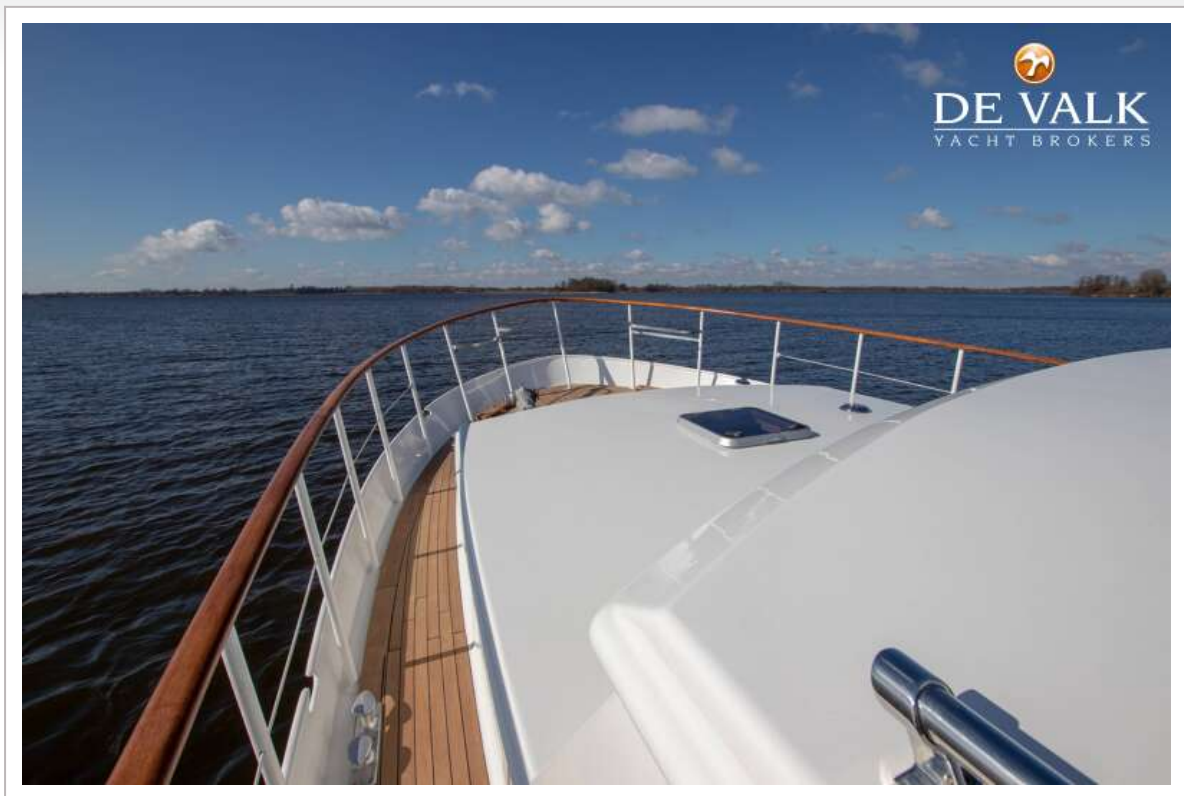


# SUPER VAN CRAFT 1470

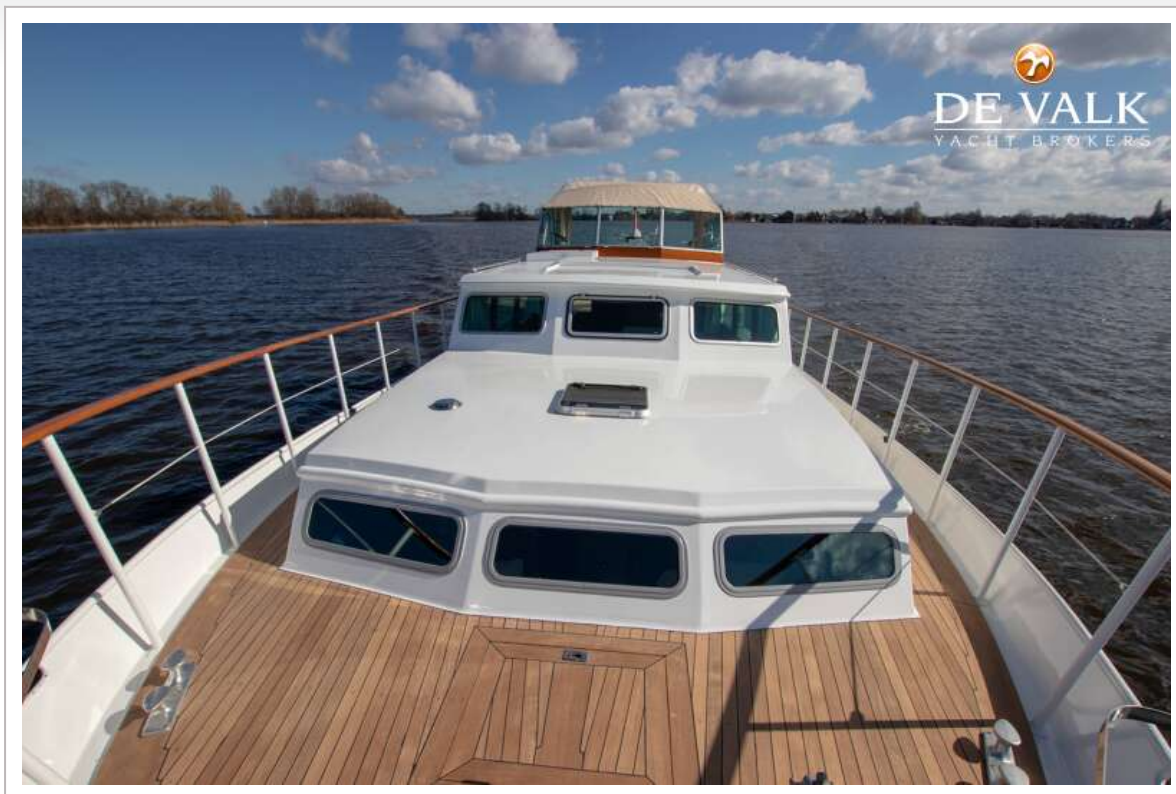




# SUPER VAN CRAFT 1470

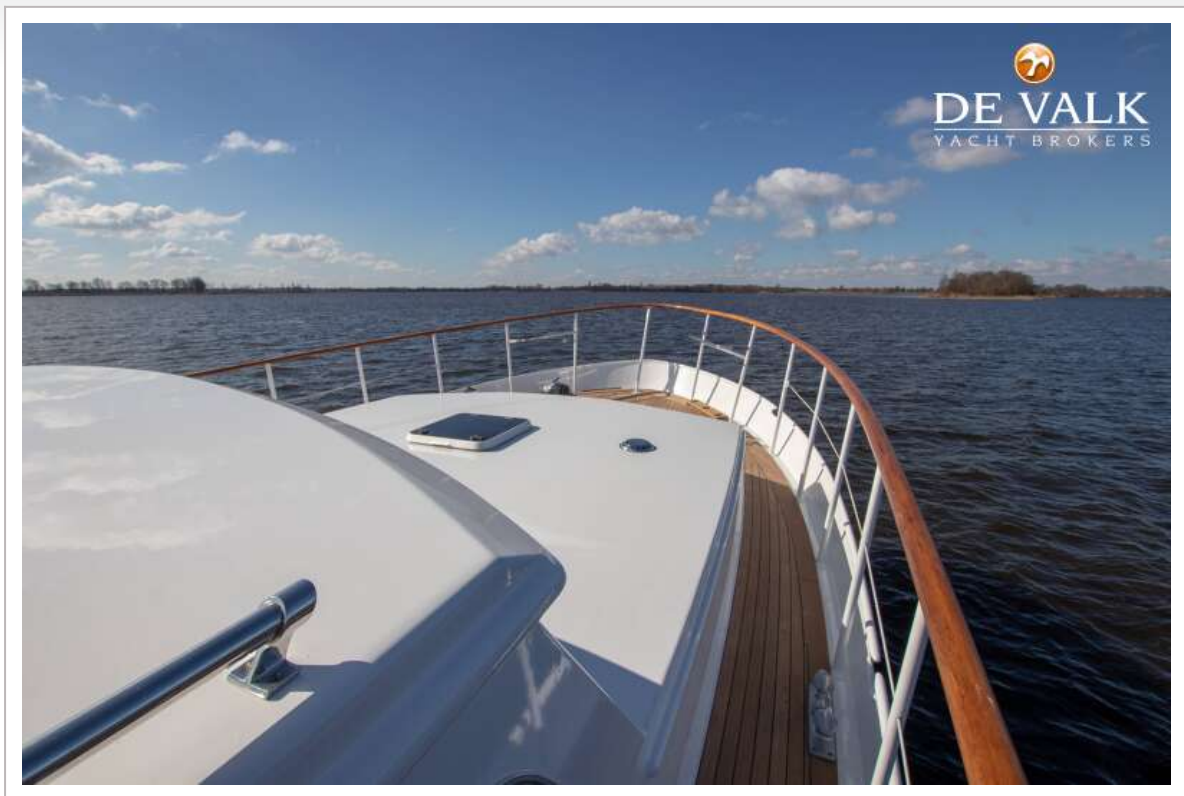


# SUPER VAN CRAFT 1470

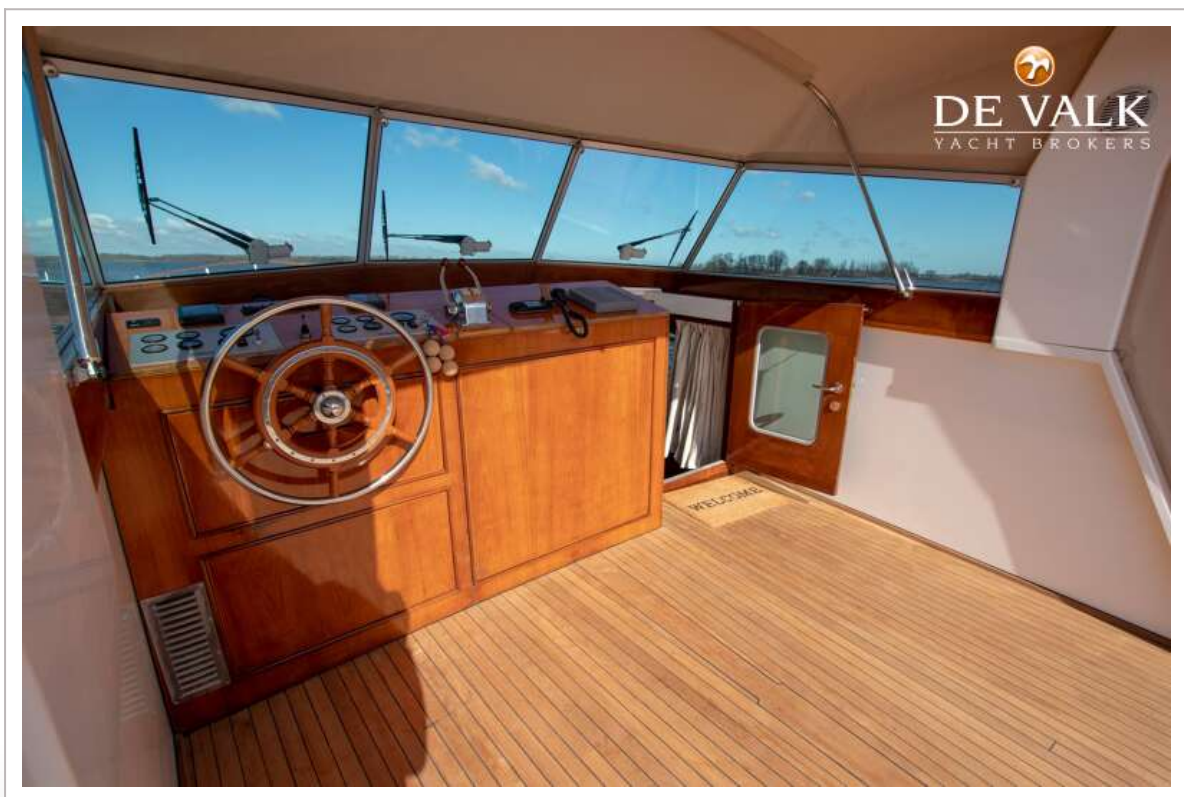




# SUPER VAN CRAFT 1470



# SUPER VAN CRAFT 1470

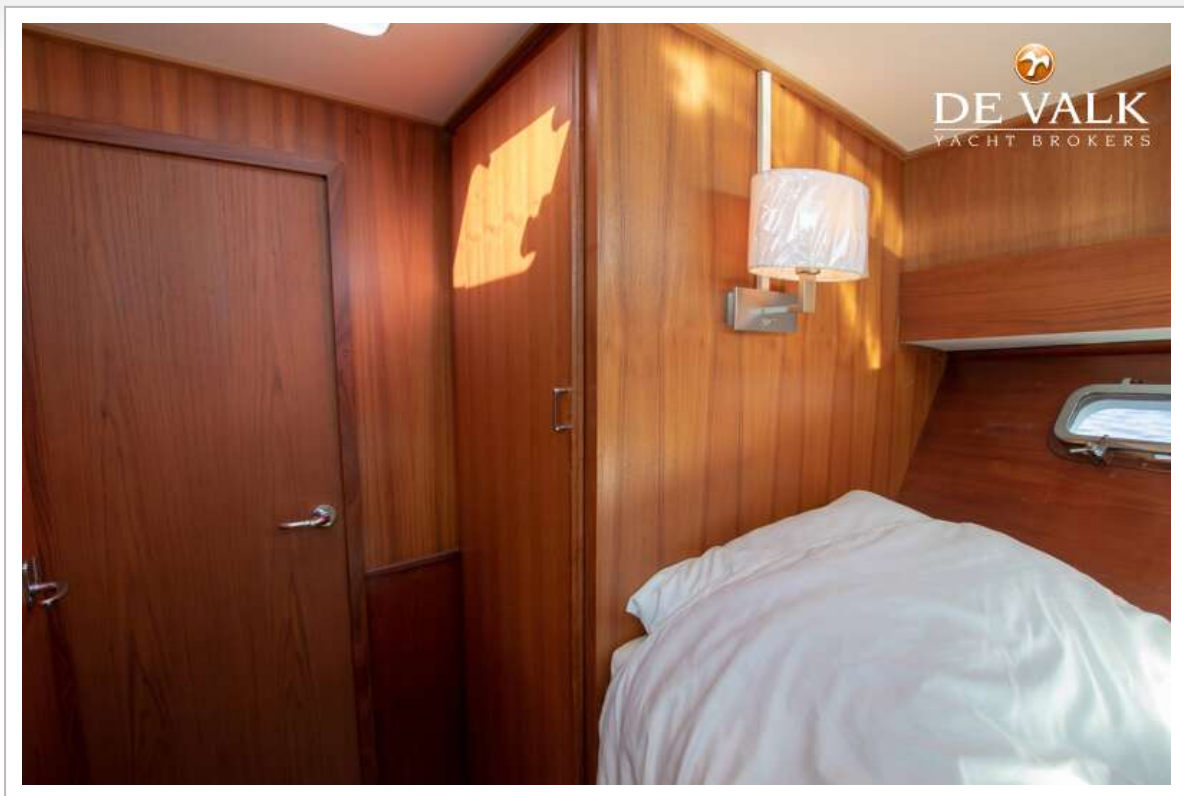




# SUPER VAN CRAFT 1470



## SUPER VAN CRAFT 1470





# SUPER VAN CRAFT 1470



# SUPER VAN CRAFT 1470





# SUPER VAN CRAFT 1470



# SUPER VAN CRAFT 1470





# SUPER VAN CRAFT 1470



# SUPER VAN CRAFT 1470





# SUPER VAN CRAFT 1470



## SUPER VAN CRAFT 1470

