



## JONGERT 16M

# JONGERT 16M

## BROKER'S COMMENTS

The Jongert 16M is what you call an extraordinary vessel. With their classic clipper bows, ketch rigs and stern window it is a well seen classic timeless design.

*Hans Visser*

## SPECIFICATIONS

<b>Dimensions</b>	16.60 x 4.55 x 2.20 (m)	<b>Builder</b>	Jongert B.V.
<b>Built</b>	1977	<b>Cabins</b>	3
<b>Material</b>	Steel	<b>Berths</b>	6
<b>Engine(s)</b>	1 x Mercedes OM352 diesel	<b>Hp/Kw</b>	125.00 (hp), 91.88 (kw)
<b>Asking price</b>	€ 150.000 (VAT Exempt)	<b>Lying</b>	at sales office

## CONTACT

<b>Sales office</b>	De Valk Hindeloopen B.V.	<b>Telephone</b>	+31 514 52 40 00
<b>Address</b>	Oosterstrand 1 8713 JS Hindeloopen NL	<b>E-mail</b>	hindeloopen@devalk.nl

## DISCLAIMER

These particulars are given in good faith as supplied but cannot be guaranteed.



## GENERAL

Model	JONGERT 16M
Type	sailing yacht
LOA (m)	16,60
Beam (m)	4,55
Draft (m)	2,20
Air draft (m)	19,00
Headroom (m)	2,00
Year built	1977
Builder	Jongert B.V.
Country	The Netherlands
Designer	Peter Sijm
Displacement (t)	28
CE norm	NA
Hull material	steel
Hull colour	white
Hull shape	S-bilged
Keel type	long keel
Superstructure material	steel Wood and
Deck material	steel
Deck finish	teak 2019
Cockpit deck finish	teak 2019
Antifouling (year)	2020
Window frame	stainless steel
Window material	glass
Portholes	steel
Insulation	glasswool
Fuel tank (litre)	steel 900
Level indicator (fuel tank)	yes
Freshwater tank (litre)	steel 900
Level indicator (freshwater)	yes



Blackwater tank (litre)	steel 700
Level indicator (blackwater)	yes
Blackwater tank extraction	deck extraction + pump
Wheel steering	hydraulic
Outside helm position	yes
More info on paintwork	Repaint in 2019

## ACCOMMODATION

Cabins	3
Berths	6
Interior	mahogany
Floor	carpet 2020
Aft deck	yes
Pilot house	yes
Saloon	yes
Headroom saloon (m)	2
Heating	diesel ducted hot air Eberspächer
Navigation center	yes
Chart table	yes
Dining room	yes
Dinette	yes
Opening door to cockpit	yes
Galley	yes
Countertop	wood
Sink	stainless steel
Cooker	ceramic AEG
Microwave/oven combi	Sharp
Hot water system	220V Eldom
Water pressure system	electrical
Kettle	yes
Coffee maker	yes



# JONGERT 16M

Crockery	yes
Owners cabin	double bed
Wardrobe	hanging/drawers/shelves
Bathroom	en suite
Toilet	en suite
Toilet system	electric
Wash basin	in the bathroom
Shower	en suite
Guest cabin 1	bunk bed
Wardrobe	hanging and drawers
Bathroom	separate
Toilet	shared
Toilet system	electric
Wash basin	in the bathroom
Shower	shared
Guest cabin 2	v-bed
Wardrobe	hanging/drawers/shelves
Bathroom	separate
Toilet	shared
Toilet system	electric
Wash basin	in the bathroom
Shower	shared
Extra info	All lights are LED

## MACHINERY

No of engines	1
Make	Mercedes
Type	OM352
HP	125
kW	91.88
Fuel	diesel



Year of overhaul	2019
Maximum speed (kn)	9
Cruising speed (kn)	7,5
Engine cooling system	freshwater heat exchanger
Engine controls	yes
Gearbox	mechanical
Bowthruster	electric 2,9 kW
Exhaust	watercooled
Propeller type	fixed
Propeller blades	3
Propeller shaft material	stainless steel
Shaft lubrication	grease
Manual bilge pump	yes
Electric bilge pump	yes
Electrical installation	Mainly replaced in 2019
Generator	wet exhaust Onan 7 kW
Start battery	2x 225Ah
Service battery	4x 225Ah
Battery charger	Victron Skylla 24V50Amp and Victron Blue Smart
Shorepower	with cable

## NAVIGATION

Depth sounder	Raymarine Depth
Log	Raymarine Speed
Windset	Raymarine Wind
VHF	Raymarine A80289
Autopilot	Robertson
Plotter	2x Raymarine AIS Axiom
Electronic chart(s)	yes
Navigation lights	yes



## EQUIPMENT

Fixed windscreen	yes
Cockpit cover	yes
Cockpit cushions	yes
Cockpit table	yes
Cockpit chairs	yes
Gangway	yes
Anchor	CQR Plough
Anchor chain	yes
Anchor 2	CQR Plough
Anchor chain	yes
Windlass	electrical
Deck wash	yes
Sea railing	wire
Railing side opening gates	yes
Pulpit	yes
Clearview window	2x
Horn	electric
Radio	Fusion MS-RA70
Cockpit speakers	yes
Speakers in salon	yes
Clock - barometer	yes

## RIGGING

Rigging	ketch
Standing rigging	wire 2019
Brand mast	Sparlight
Material mast	aluminium Repainted in 2019
Spreaders	yes
Mainsail	yes
Mainsail cover	yes



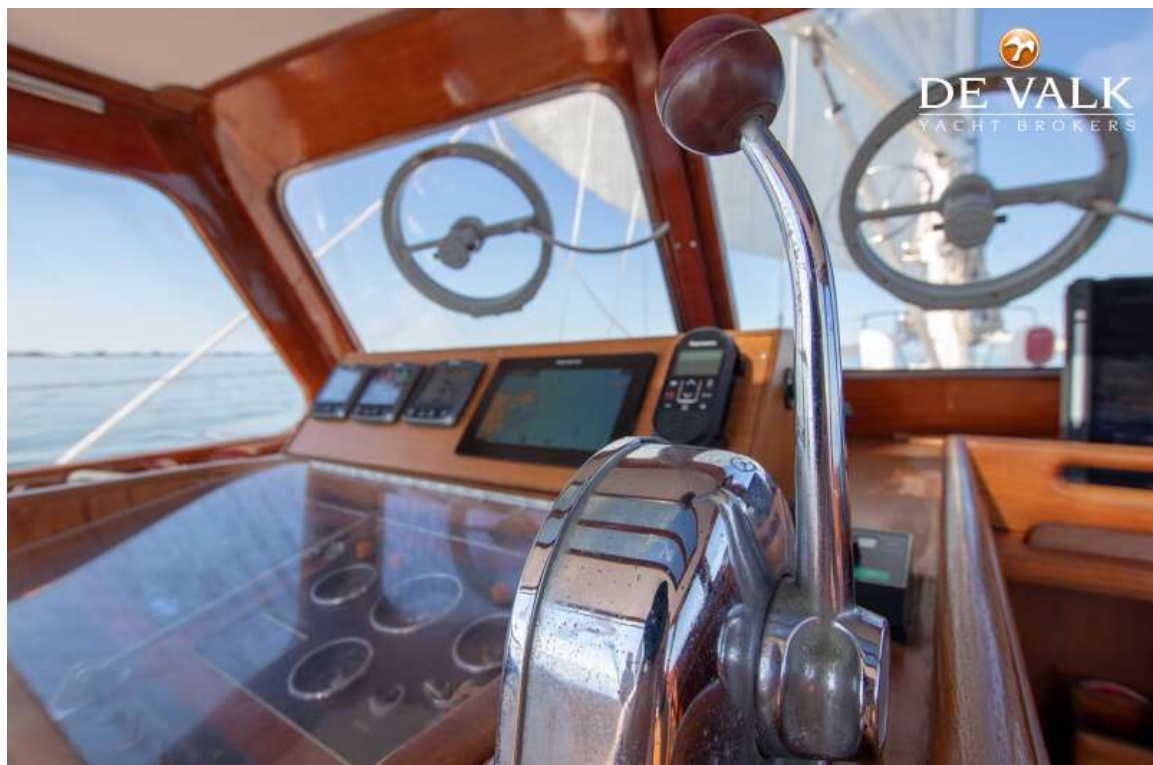
Jib	yes
Genoa	yes
Spinnaker	2x
Reefing System	slabreefing
Backstay adjuster	tackle
Boomvang	mechanical
Primary sheet winch	Lewmar
Genoa sheetwinches	Lewmar
Halyard winches	Lewmar
Spi-pole	aluminium Repainted 2019



# JONGERT 16M



# JONGERT 16M



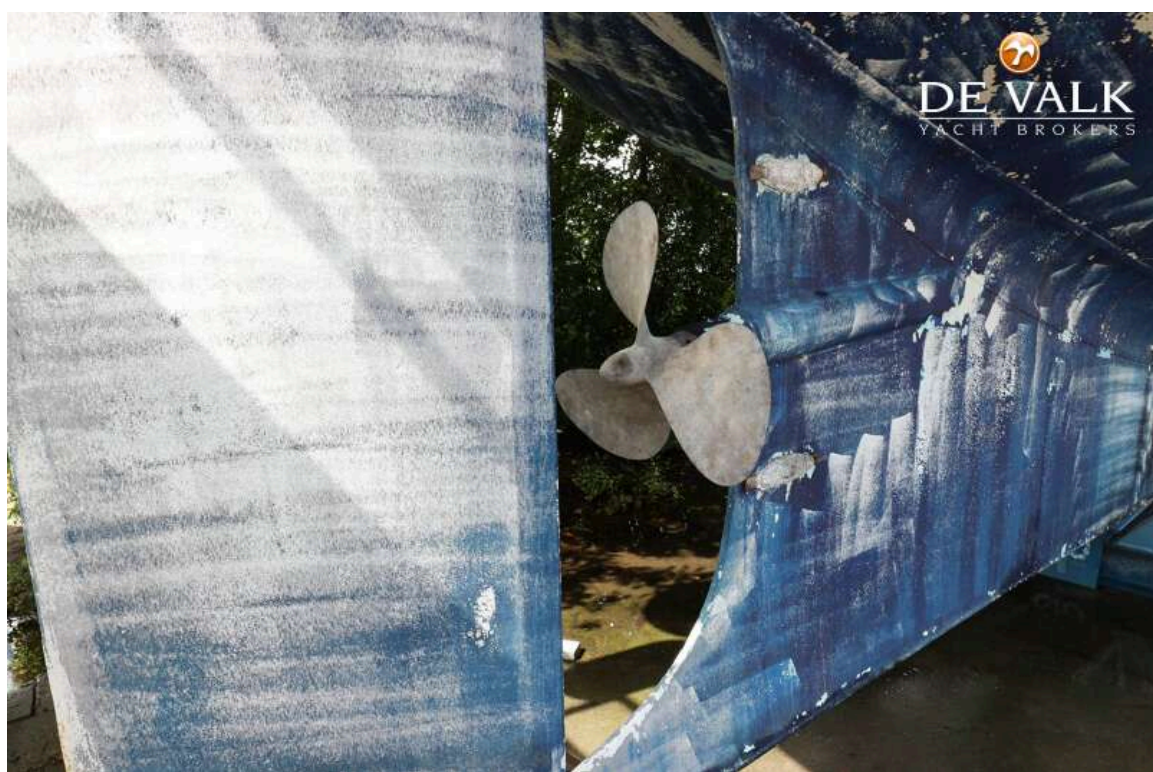
# JONGERT 16M



# JONGERT 16M



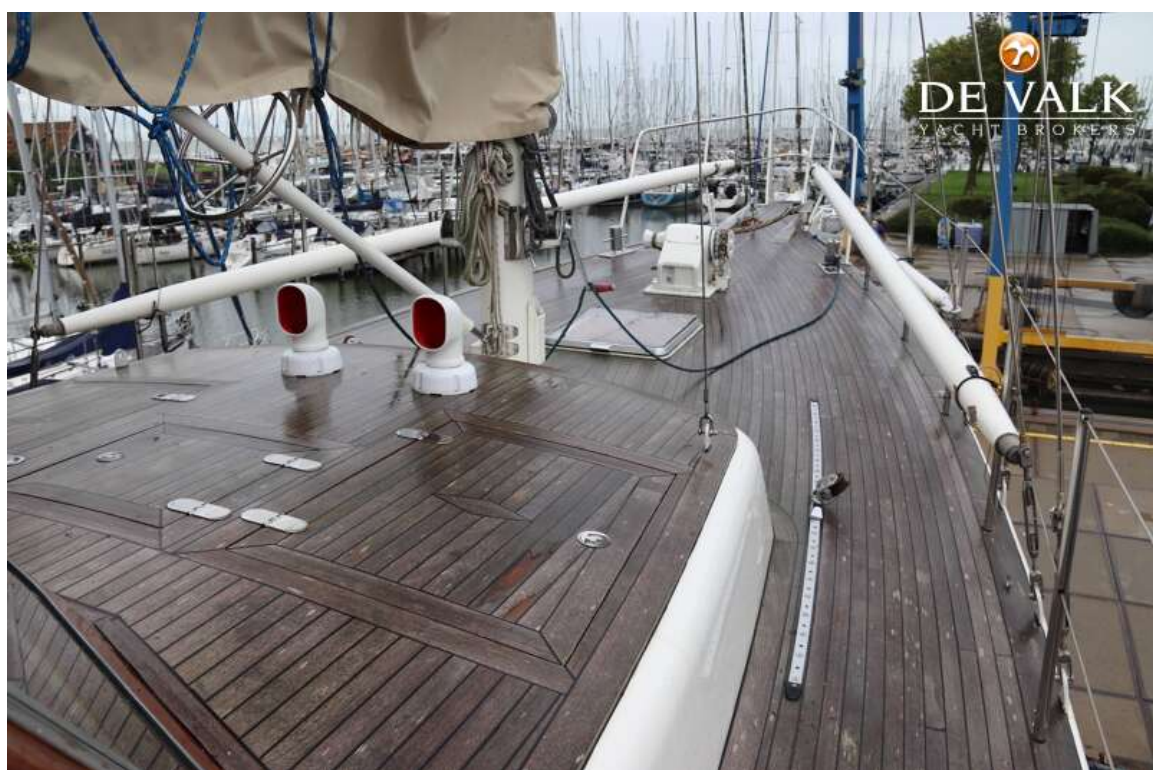
# JONGERT 16M



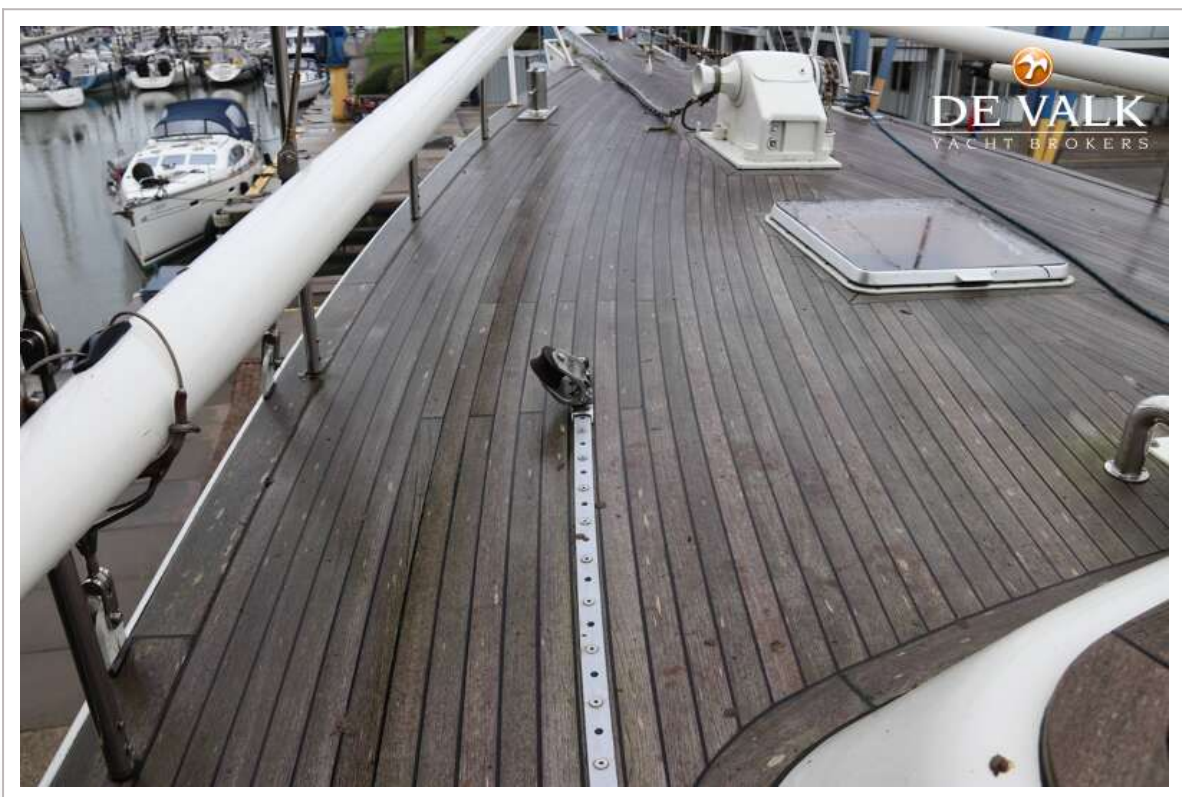
# JONGERT 16M



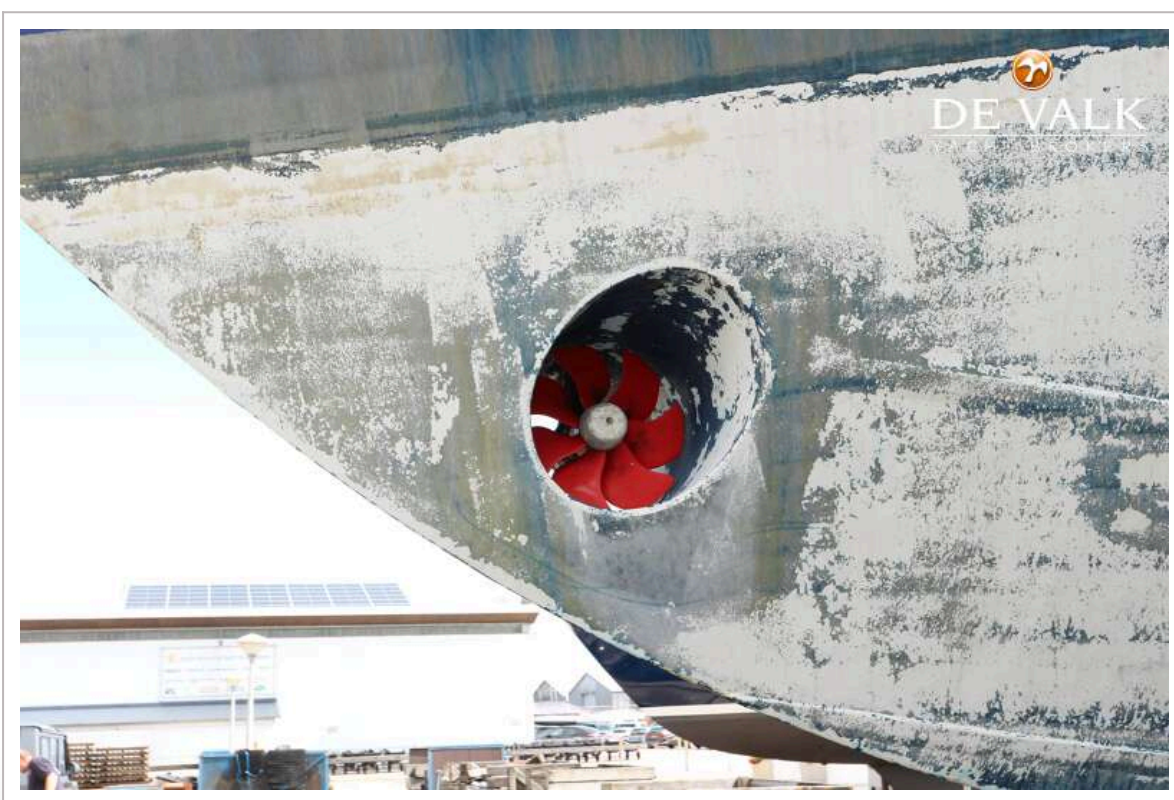
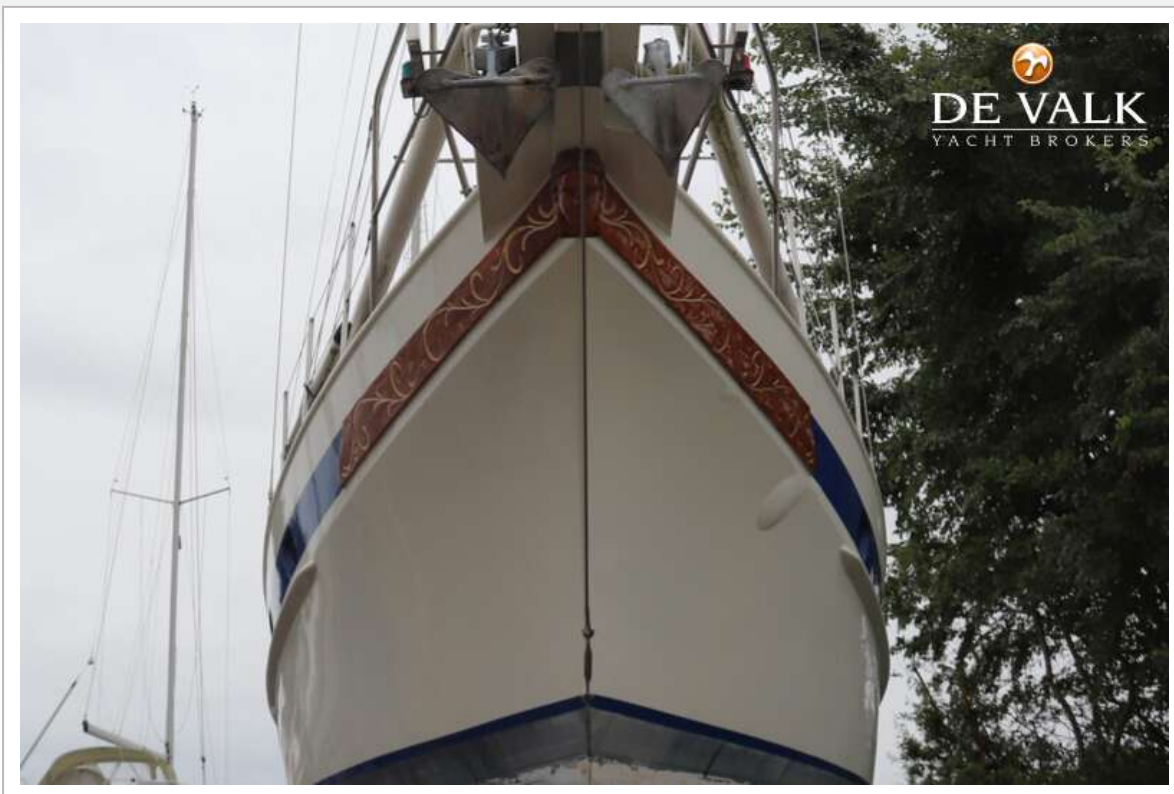
# JONGERT 16M



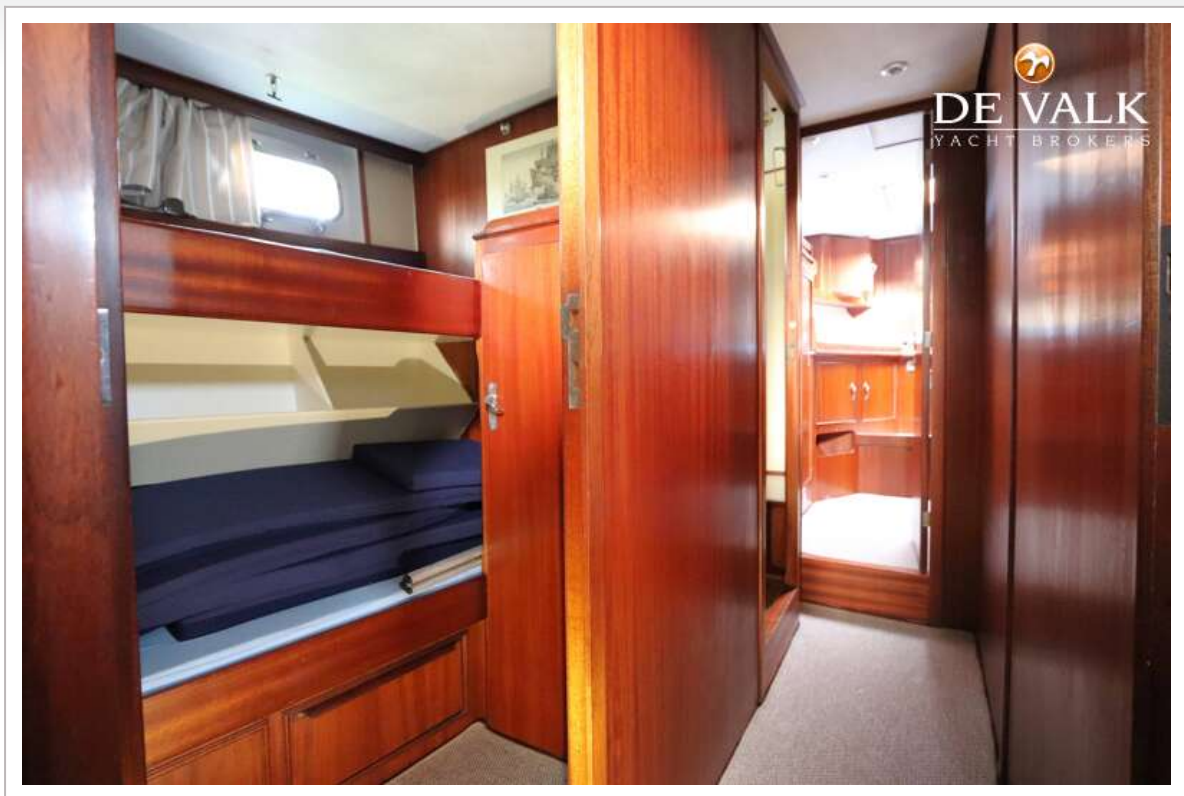
# JONGERT 16M



# JONGERT 16M



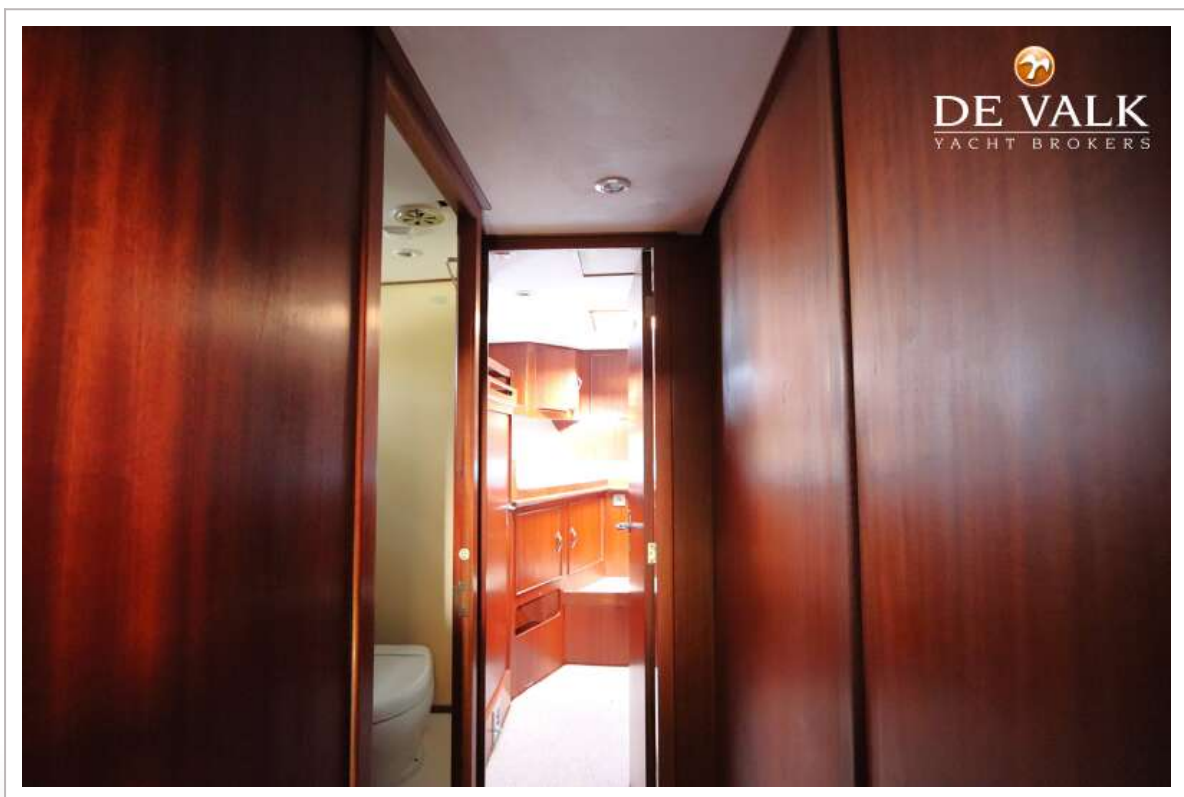
# JONGERT 16M



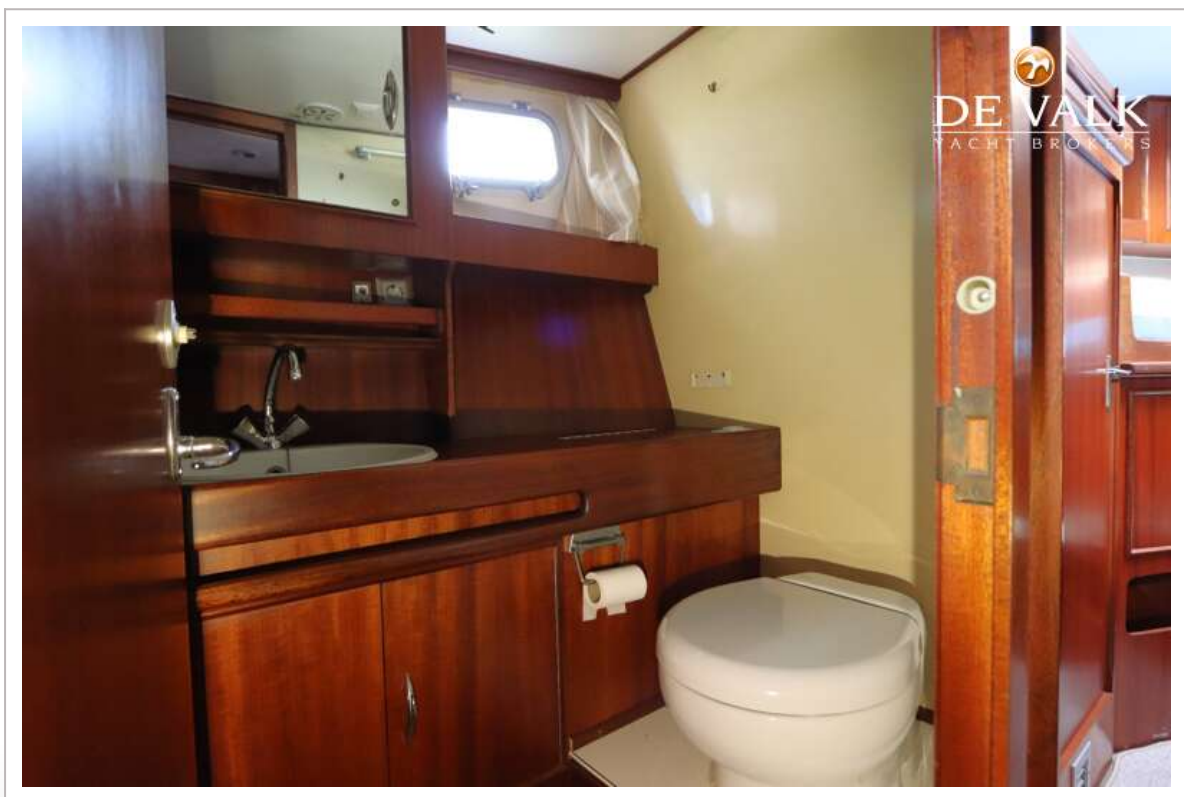
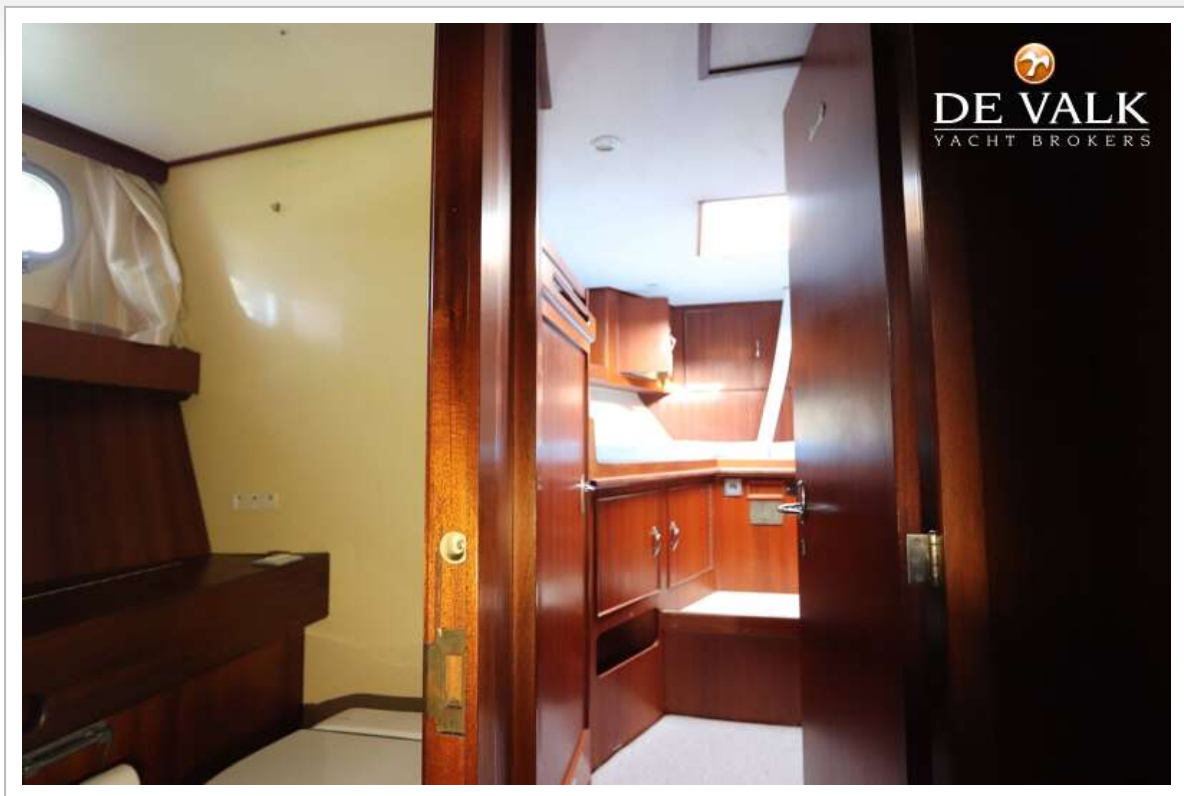
# JONGERT 16M



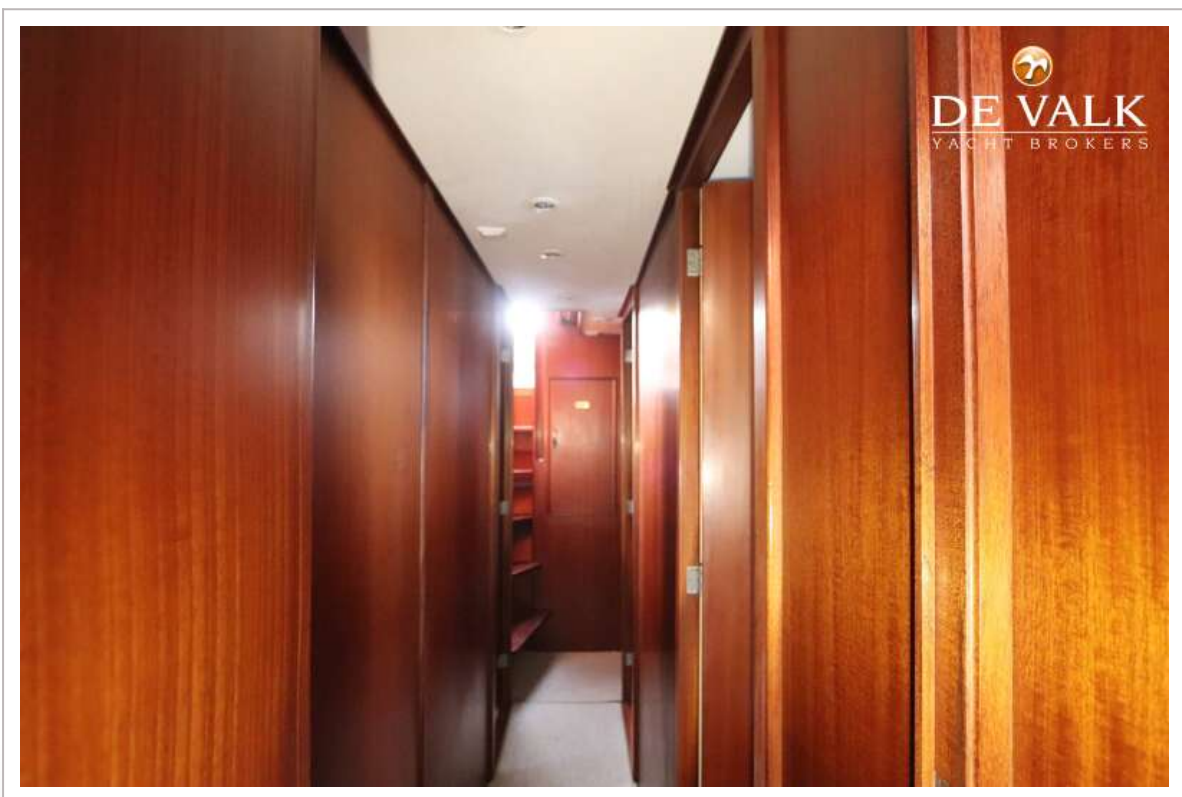
# JONGERT 16M



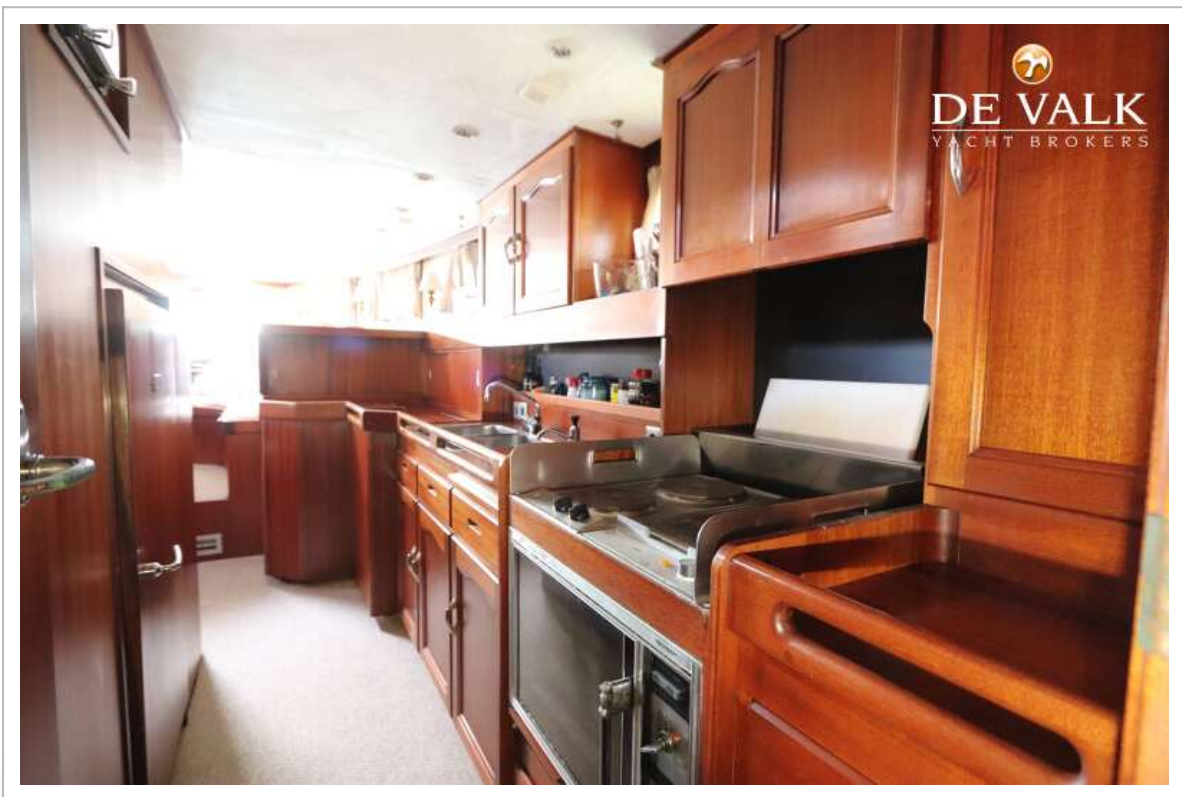
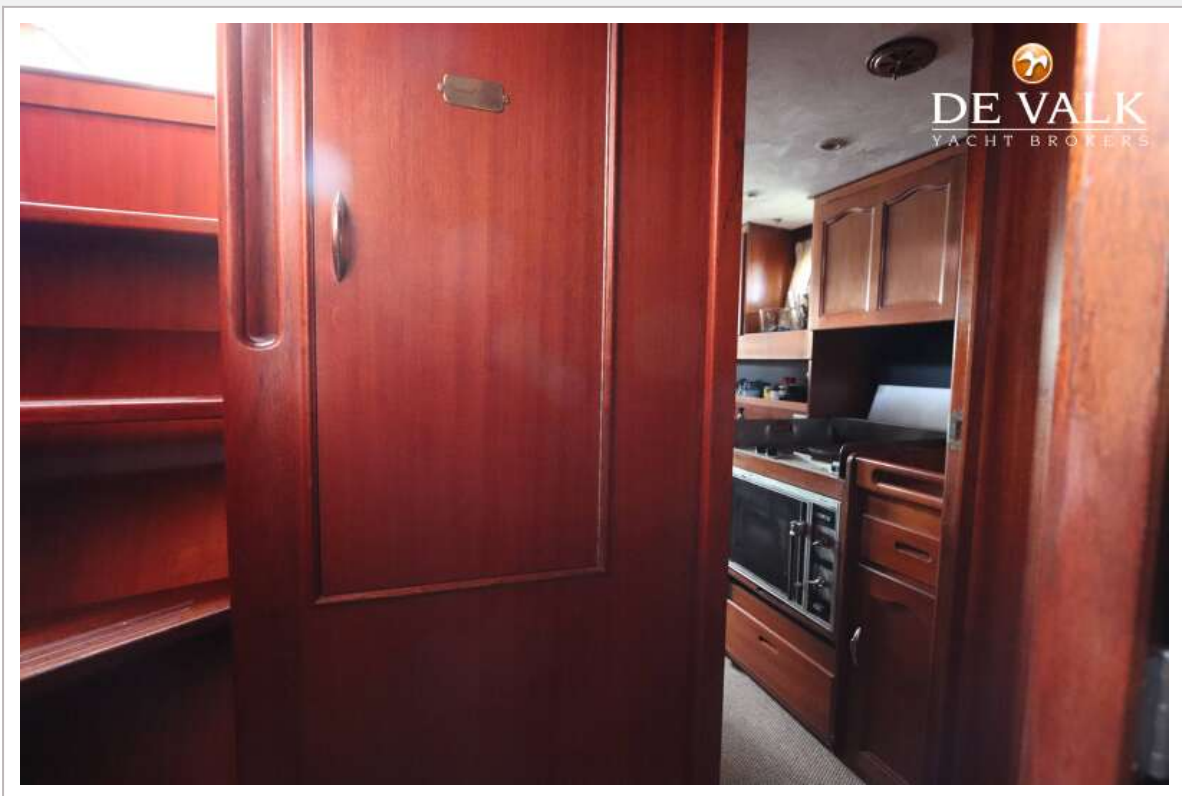
# JONGERT 16M



# JONGERT 16M



# JONGERT 16M



# JONGERT 16M



# JONGERT 16M



# JONGERT 16M



# JONGERT 16M

