



TUNA 40.2

TUNA 40.2

BROKER'S COMMENTS

The Tuna 40.2 is fitted with Vetus Stabilizers. This new built yacht is a better and personalised version of the Tuna 40. The Tuna is more then suitable for a comfortable run on the inland and coastal waters. The Tuna 40.2 can be delivered without VAT.

Arjen Hoeksma

SPECIFICATIONS

| | | | |
|---------------------|-------------------------|----------------|--------------------------------|
| Dimensions | 12.20 x 4.30 x 1.10 (m) | Builder | Dutch Bay Composite Yachts Ltd |
| Built | 2018 | Cabins | 3 |
| Material | GRP | Berths | 6 |
| Engine(s) | 1 x Yanmar 6BY3 diesel | Hp/Kw | 165.00 (hp), 121.28 (kw) |
| Asking price | sold (VAT) | Lying | at sales office |

CONTACT

| | | | |
|---------------------|--|------------------|----------------------|
| Sales office | De Valk Loosdrecht B.V. | Telephone | +31 (0)35 582 90 30 |
| Address | 't Breukeleveense Meentje 6 1231LM Loosdrecht / Wijdmeren NL | E-mail | loosdrecht@devalk.nl |

DISCLAIMER

These particulars are given in good faith as supplied but cannot be guaranteed.



GENERAL

| | |
|------------------------------|--------------------------------|
| Model | TUNA 40.2 |
| Type | motor yacht |
| LOA (m) | 12,20 |
| Beam (m) | 4,30 |
| Draft (m) | 1,10 |
| Year built | 2018 |
| Launched | 2018 |
| Builder | Dutch Bay Composite Yachts Ltd |
| Country | Turkey |
| Displacement (t) | 9 |
| CE norm | B |
| Hull material | GRP |
| Hull colour | off-white |
| Hull shape | hard chine |
| Superstructure material | composite |
| Rubbing strake | plastic |
| Deck material | composite |
| Deck finish | teak |
| Cockpit deck finish | teak |
| Window material | glass |
| Deckhatch | yes |
| Portholes | aluminium |
| Radar arch | collapsible |
| Fuel tank (litre) | 850 |
| Level indicator (fuel tank) | yes |
| Freshwater tank (litre) | 2x 500 |
| Level indicator (freshwater) | yes |
| Blackwater tank (litre) | 145 |
| Wheel steering | hydraulic |
| Inside helm position | yes |



More info on paintwork

New

Extra info

New yacht, delivered in 2018

ACCOMMODATION

Cabins

3

Berths

6

Interior

teak

Floor

parquet

Saloon

yes

Headroom saloon (m)

2,00

Air-conditioning

reverse cycle airco Webasto

Dinette

U-Shaped

Opening door to aft deck

yes

Galley

yes

Countertop

corian

Sink

stainless steel

Cooker

calor gas Smev

Extractor

yes

Fridge

Isotherm

Hot water system

220V + engine

Water pressure system

electrical

Owners cabin

French bed

Bed length (m)

2,10

Wardrobe

hanging/drawers/shelves

Bathroom

en suite

Toilet

en suite Jabsco

Toilet system

electric

Wash basin

in the bathroom

Shower

en suite

Guest cabin 1

double bed

Wardrobe

hanging and drawers



| | |
|----------------|------------------------|
| Guest cabin 2 | twin single |
| Bed length (m) | 2,10 |
| Wardrobe | hanging and drawers |
| Extra info | Salon cushions leather |

MACHINERY

| | |
|--------------------------|----------------------------------|
| No of engines | 1 |
| Make | Yanmar |
| Type | 6BY3 |
| HP | 165 |
| kW | 121,28 |
| Fuel | diesel |
| Year installed | 2017 |
| Maximum speed (kn) | 10 |
| Cruising speed (kn) | 7.5 |
| Engine hours | 195 |
| Engine cooling system | freshwater heat exchanger |
| Drive | shaft |
| Engine controls | electrical |
| Gearbox | hydraulic |
| Bowthruster | electric Max Power |
| Exhaust | watercooled |
| Propeller type | fixed |
| Manual bilge pump | yes |
| Electric bilge pump | yes |
| Electrical installation | 12/230V |
| Start battery | 1x 120A Victron |
| Service battery | 4x 220A Victron |
| Battery monitor | Victron |
| Battery charger/inverter | Victron Multiplus 3000W/120A/12V |
| Stabilizers | fin Vetus |



| | |
|----------|-----|
| Trimtabs | yes |
|----------|-----|

NAVIGATION

| | |
|------------------|-----------------------------------|
| Electric compass | yes |
| Depth sounder | Raymarine St60 Tri-data |
| Log | Raymarine St60 Tr-data |
| VHF | 2x Raymarine |
| Autopilot | Raymarine St6002 + remote control |
| GPS | Raymarine C70 |
| Plotter | Raymarine C70 |

EQUIPMENT

| | |
|----------------------------|--------------------|
| Cockpit cover | yes |
| Cockpit cushions | yes |
| Bathing platform | yes |
| Boarding ladder | stainless steel |
| Gangway | yes |
| Anchor | Remote control |
| Anchor chain | 60 meter |
| Windlass | electrical |
| Sea railing | stainless steel |
| Grab rail (superstructure) | stainless steel |
| Wiper | yes |
| Fenders | yes |
| Radio-cd player | Sony CDX-G1100U |
| Cockpit speakers | Cockpit + aft-deck |
| Speakers in salon | yes |
| Clock - barometer | Plastimo |





TUNA 40.2



TUNA 40.2



TUNA 40.2



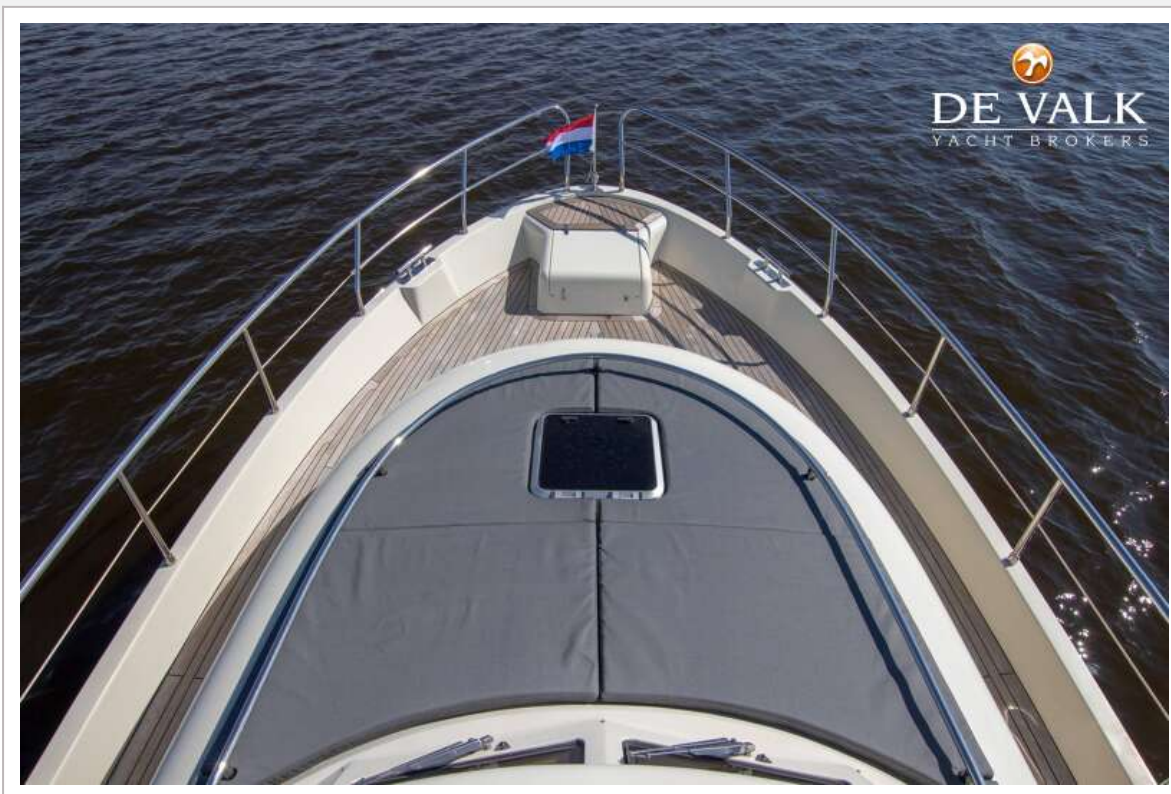
TUNA 40.2







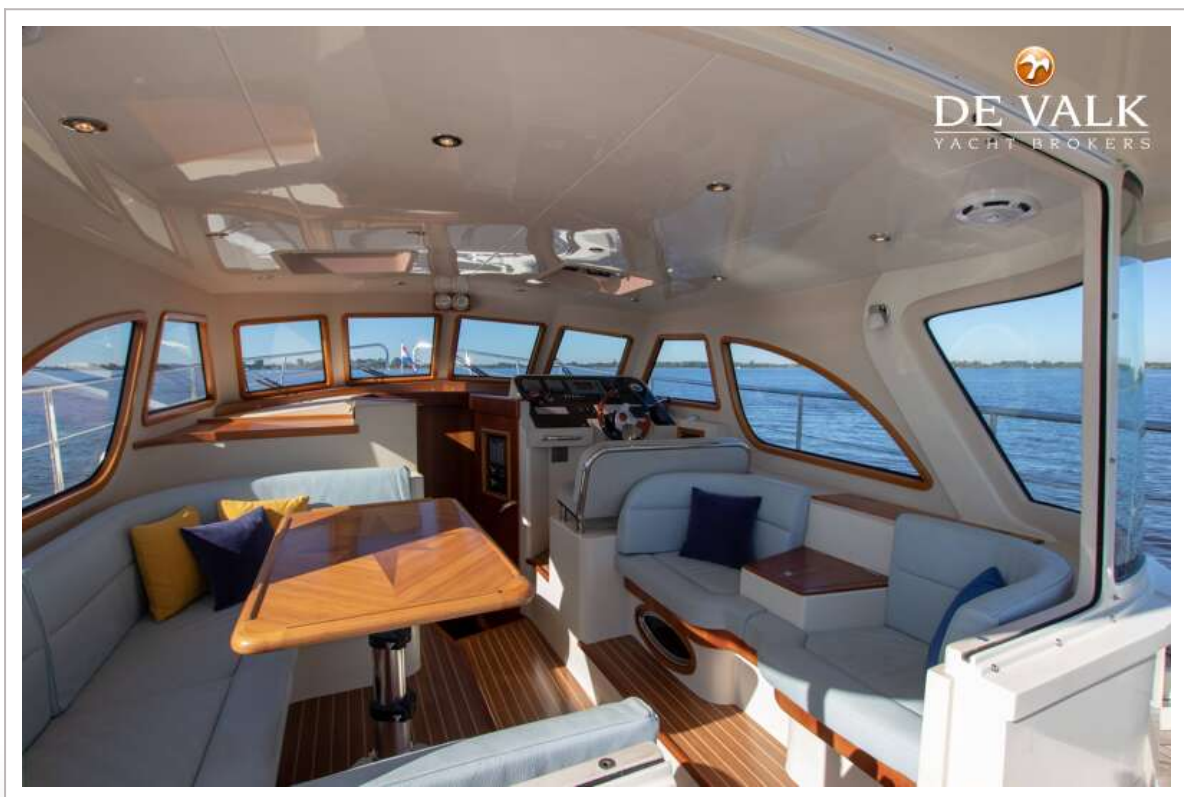
TUNA 40.2



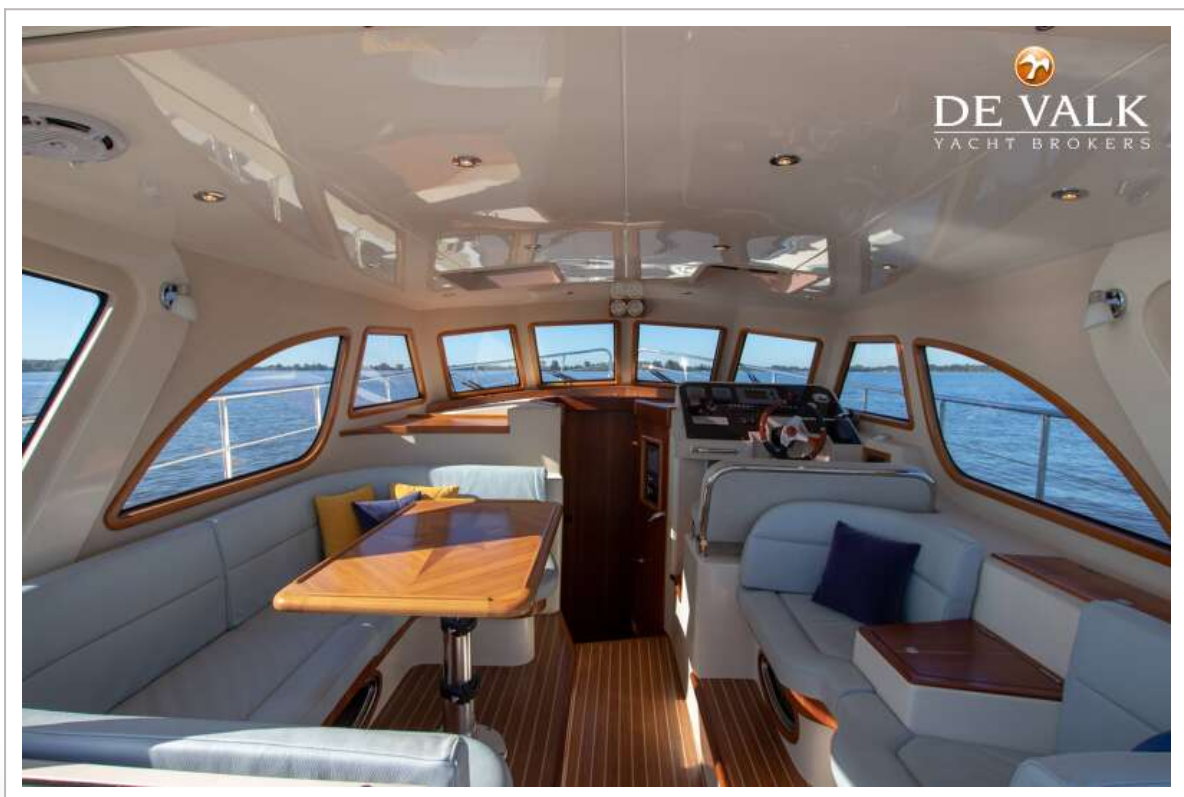
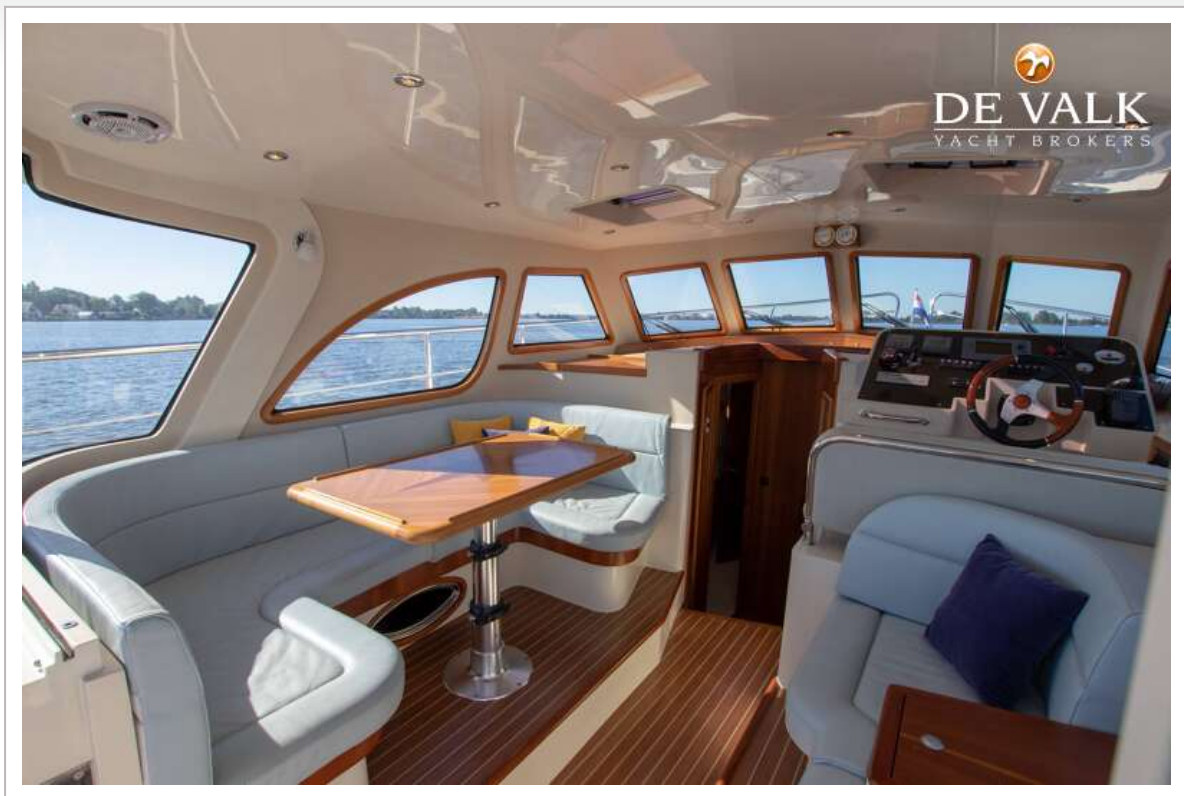
TUNA 40.2

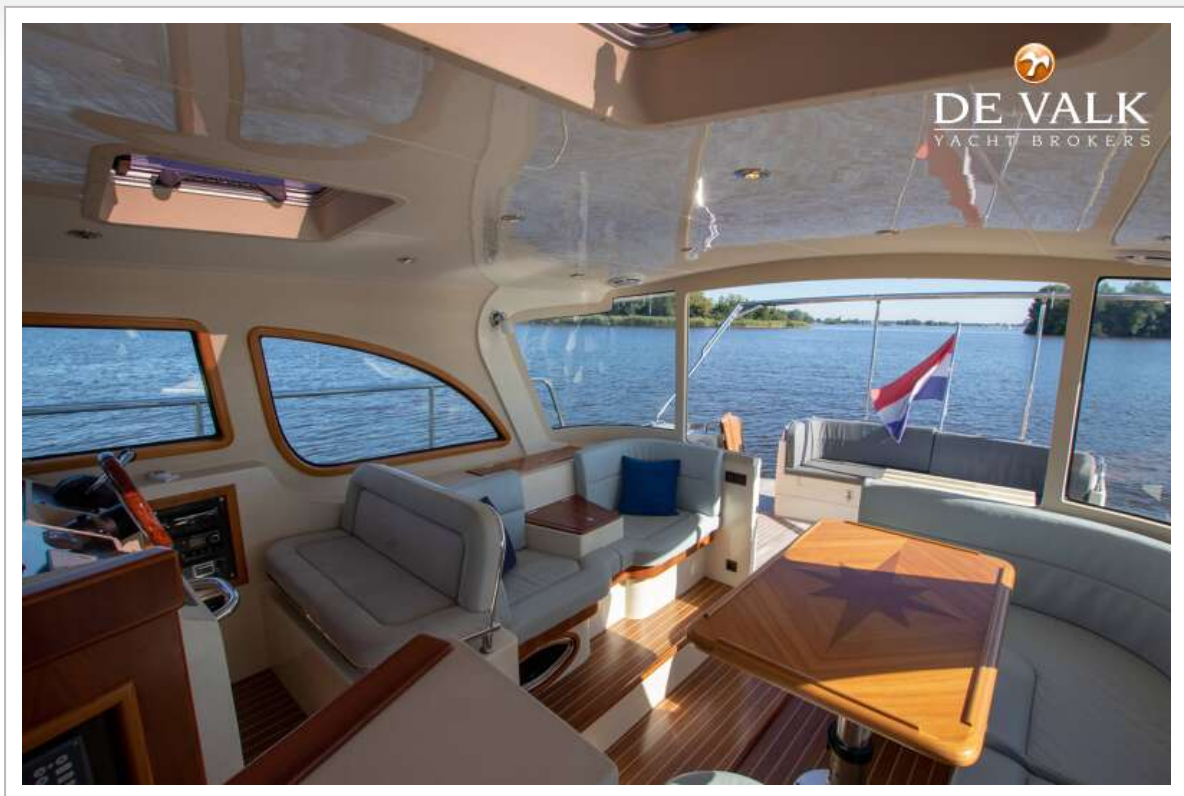


TUNA 40.2



TUNA 40.2





TUNA 40.2





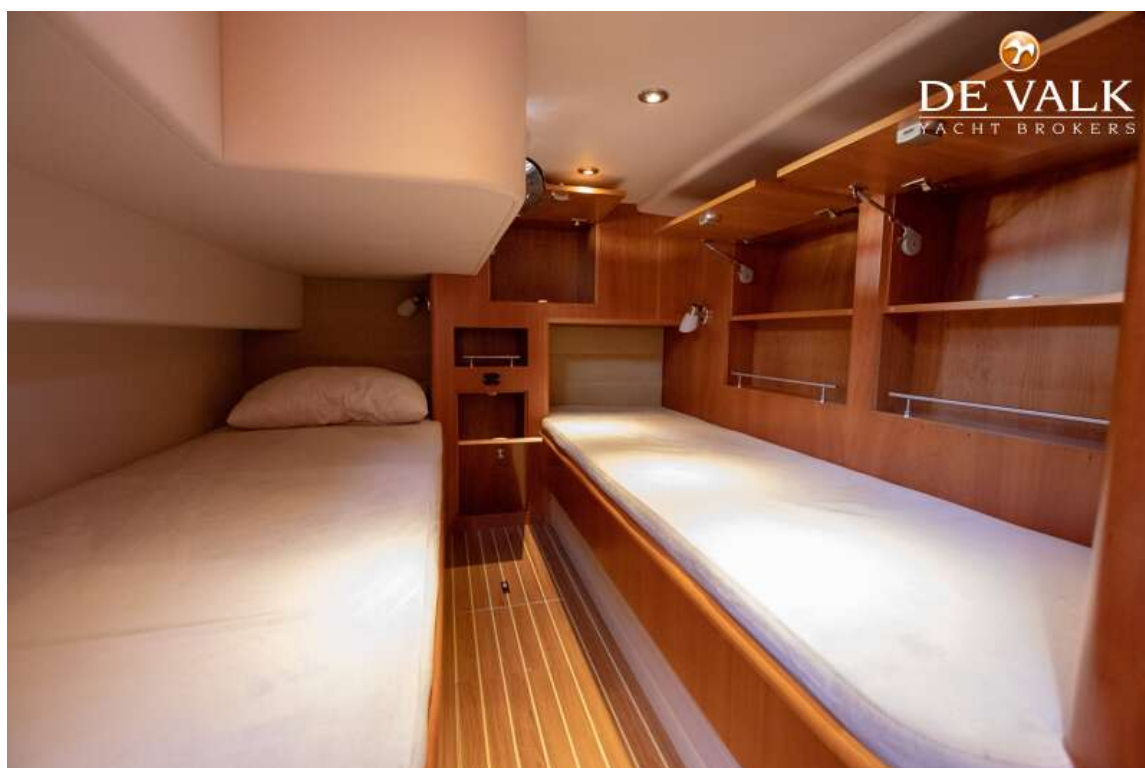
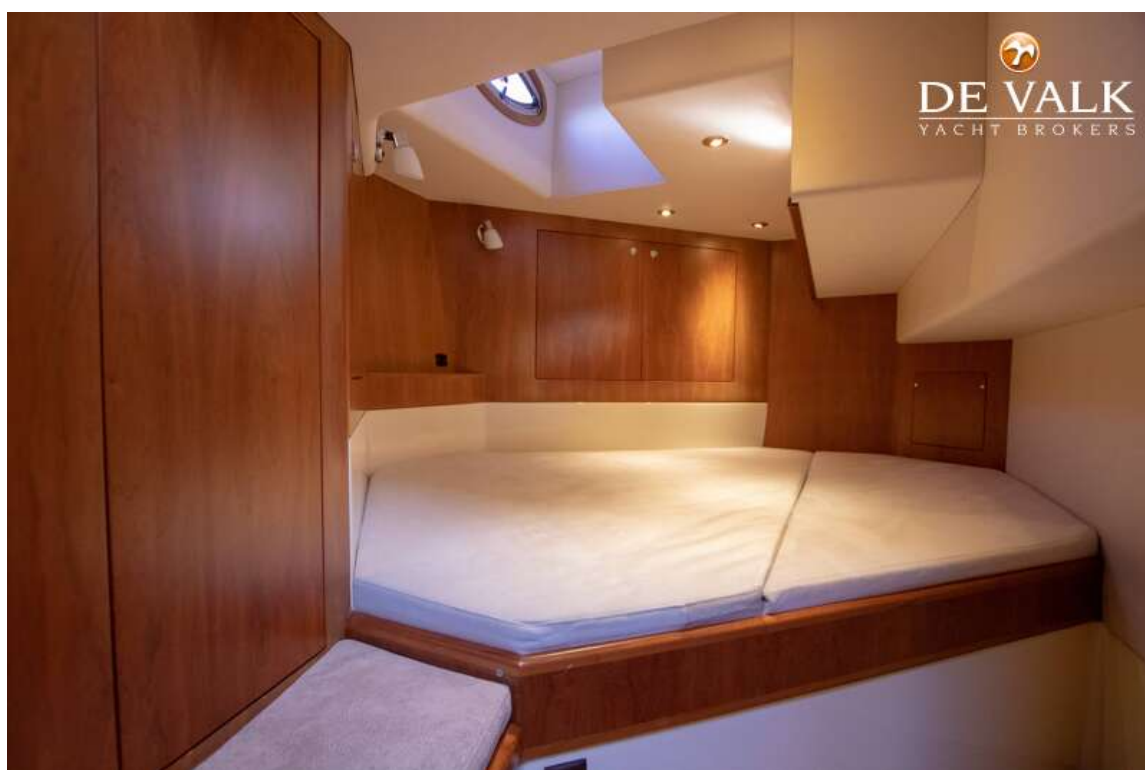
TUNA 40.2



TUNA 40.2







TUNA 40.2

