



DE VALK
YACHT BROKERS



REGO STANDARD 35



DE VALK
YACHT BROKERS

REGO STANDARD 35

BROKER'S COMMENTS

The Rego Standard 35 is built according the well known design of L.M. Huitema and is always perfectly maintained by her first en second owner. She is a strong built, stable and is easy maneuvering and she offers good access to the saloon due to her French doors. The cockpit cover/tent you can easily create more space for berth and housing! This Rego Standard 35 is in a perfect state and ready to go on new adventures.

Mark Hesselmans

SPECIFICATIONS

Dimensions	10.70 x 3.85 x 0.85 (m)	Builder	Rego Watersport BV
Built	2009	Cabins	2
Material	Steel	Berths	4
Engine(s)	1 x Yanmar 4JH4E diesel	Hp/Kw	55.00 (hp), 40.42 (kw)
Asking price	sold (VAT)	Lying	elsewhere / Not at sales office

CONTACT

Sales office	De Valk Loosdrecht B.V.	Telephone	+31 (0)35 582 90 30
Address	't Breukeleveense Meentje 6 1231LM Loosdrecht / Wijdmeren NL	E-mail	loosdrecht@devalk.nl

DISCLAIMER

These particulars are given in good faith as supplied but cannot be guaranteed.



GENERAL

Model	REGO STANDARD 35
Type	motor yacht
LOA (m)	10,70
Beam (m)	3,85
Draft (m)	0,85
Air draft (m)	2,40
Headroom (m)	1,95
Year built	2009
Builder	Rego Watersport BV
Country	The Netherlands
Designer	Huitema
Displacement (t)	10
CE norm	C
Hull material	steel
Hull colour	blue
Hull shape	hard chine
Superstructure material	steel
Rubbing strake	fender rope
Deck material	steel
Cockpit deck finish	teak
Antifouling (year)	2019
Window frame	aluminium
Window material	double glazing Tinted glass
Portholes	aluminium
Mast can be lowered	manual
Fuel tank (litre)	300
Level indicator (fuel tank)	yes
Freshwater tank (litre)	390
Blackwater tank (litre)	100
Wheel steering	hydraulic Heavy duty



ACCOMMODATION

Cabins	2
Berths	4
Interior	teak
Floor	teak
Open cockpit	yes
Saloon	yes
Headroom saloon (m)	2,00+/-
Heating	diesel ducted hot air Webasto Marine comfort
Dinette	yes
Opening door to cockpit	yes
Galley	yes
Sink	stainless steel
Cooker	calor gas Dometic 3 burners
Fridge	Vitrifrigo with freezer
Hot water system	220V + engine
Water pressure system	electrical
Owners cabin	double bed
Bed length (m)	2,00+/-
Wardrobe	hanging/drawers/shelves
Bathroom	en suite
Toilet	en suite
Toilet system	electric
Shower	en suite
Guest cabin 1	double bed
Bed length (m)	2,00+/-
Extra info	2 x Akai tv's

MACHINERY

No of engines	1
Make	Yanmar



Type	4JH4E
HP	55,00
kW	40,42
Fuel	diesel
Year installed	2009
Maximum speed (kn)	8
Cruising speed (kn)	5
Engine hours	1489
Engine cooling system	freshwater heat exchanger
Drive	shaft
Gearbox	hydraulic
Bowthruster	electric Vetus
Exhaust	watercooled
Propeller type	fixed
Propeller shaft material	stainless steel
Electric bilge pump	yes
Electrical installation	yes
Batteries	yes
Start battery	1x AGM 2017
Service battery	2x 250ah AGM 2017
Bowthruster battery	1X AGM 2017
Battery monitor	Victron Energy VE bus Multicontrol
Battery charger	Victron Energy multi 12/1600/70
Inverter	Victron Energy multi
Solar panel	2x 200W
Shorepower	with cable

NAVIGATION

Electric compass	yes
Depth sounder/log	Navman 3100s
VHF	Navman VHF 7100



Radar/plotter	Simrad Go7 Navionics gold Europe
AIS receiver	yes
Navigation lights	yes

EQUIPMENT

Cockpit cover	2019
Cockpit cushions	yes
Cockpit table	yes
Bathing platform	yes
Boarding ladder	stainless steel
Transom door	yes
Deck shower	yes
Anchor	yes
Windlass	manual
Sea railing	stainless steel
Grab rail (superstructure)	stainless steel
Wiper	yes
Horn	yes
TV	Samsung
Satellite	Satenne "Snipe"
Radio-cd player	Pioneer
Speakers in salon	yes



REGO STANDARD 35



REGO STANDARD 35



REGO STANDARD 35



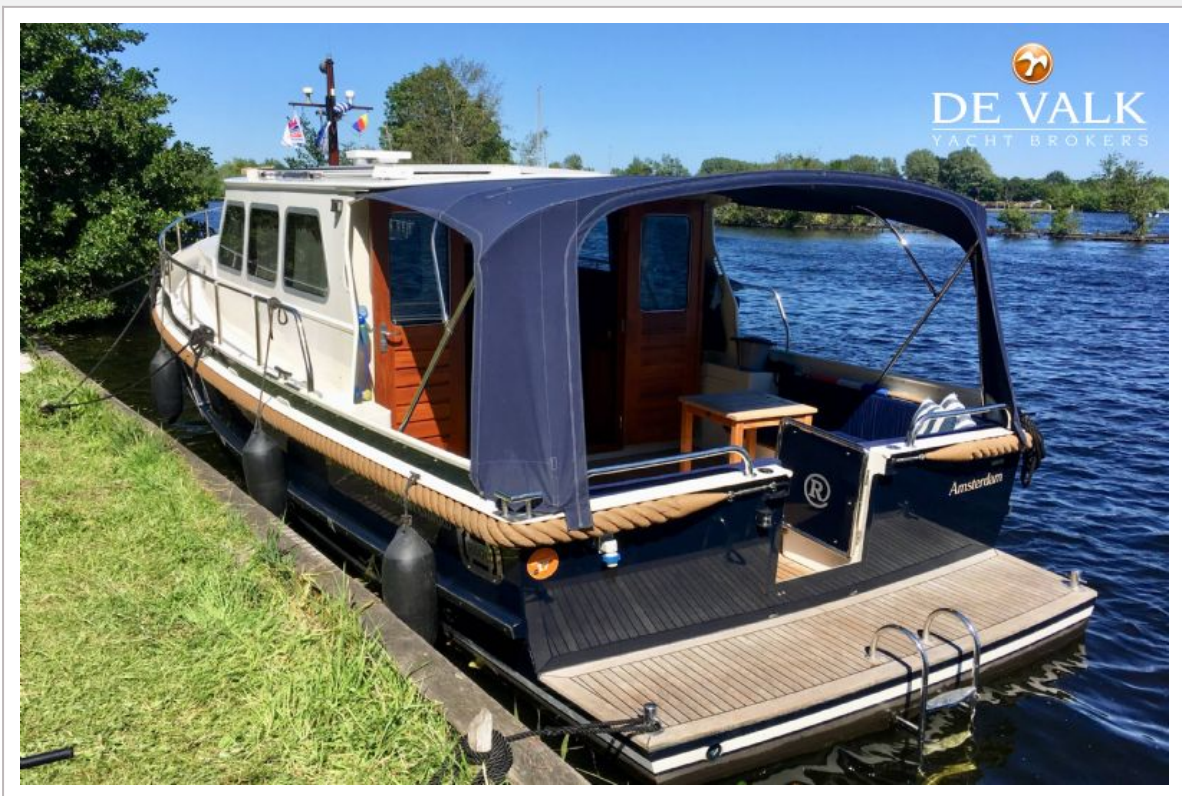
REGO STANDARD 35



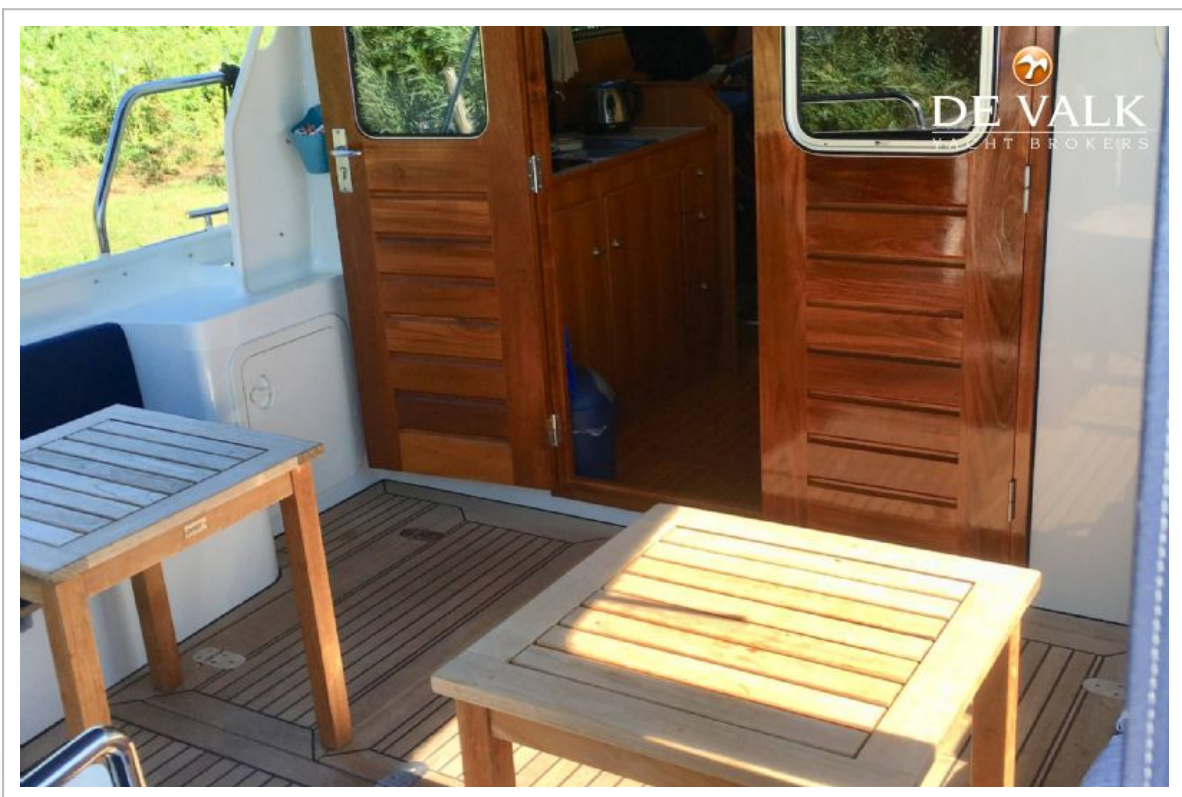
REGO STANDARD 35



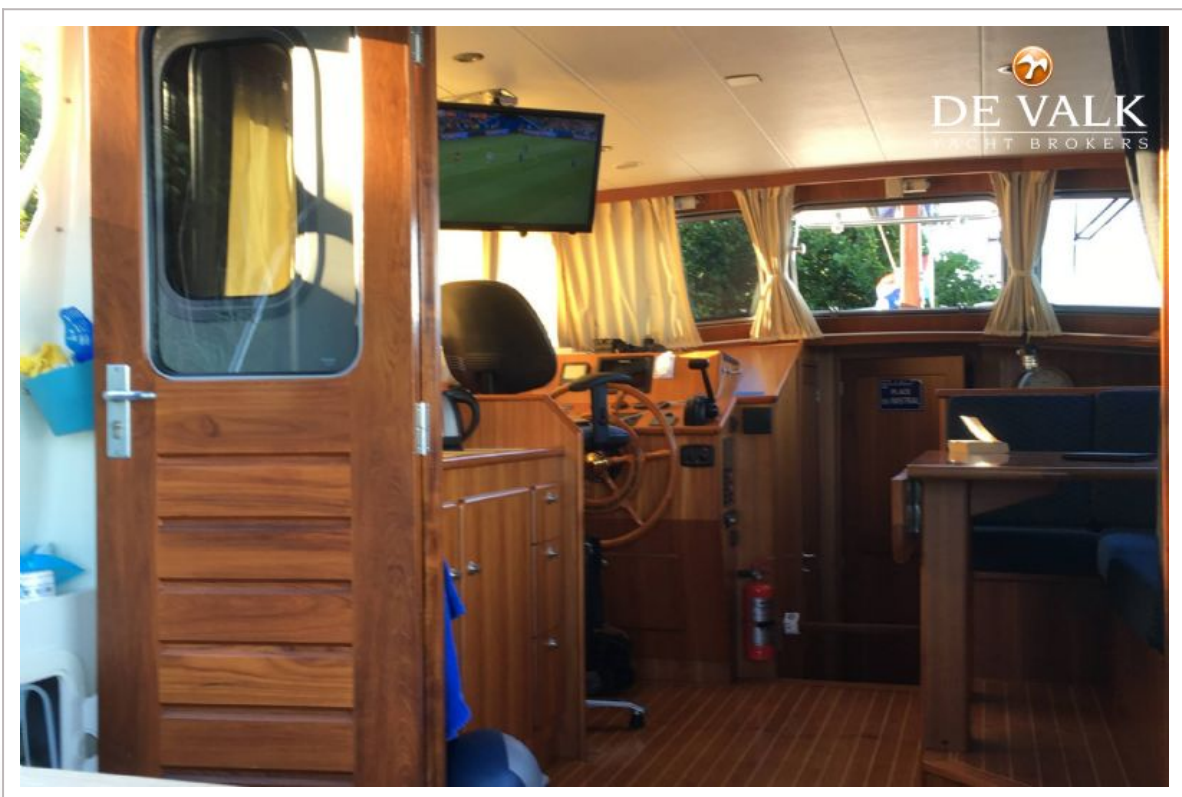
REGO STANDARD 35



REGO STANDARD 35



REGO STANDARD 35



REGO STANDARD 35



REGO STANDARD 35



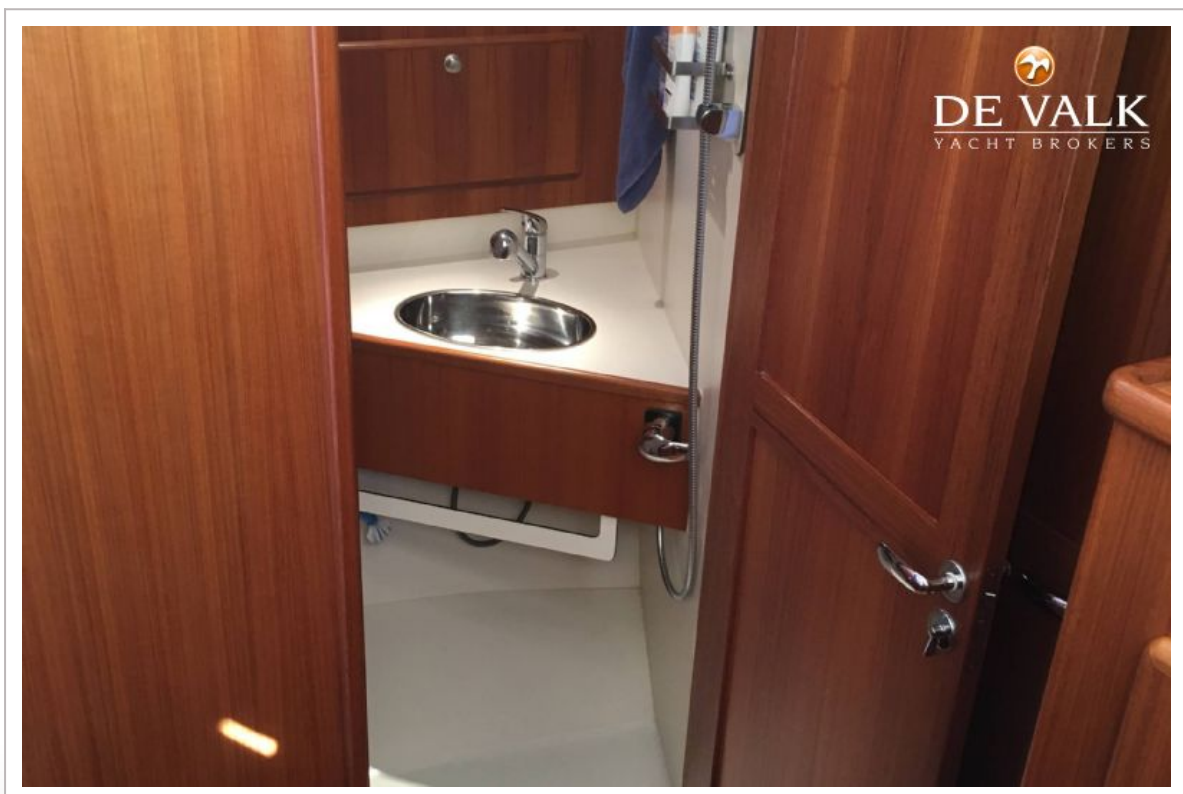
REGO STANDARD 35

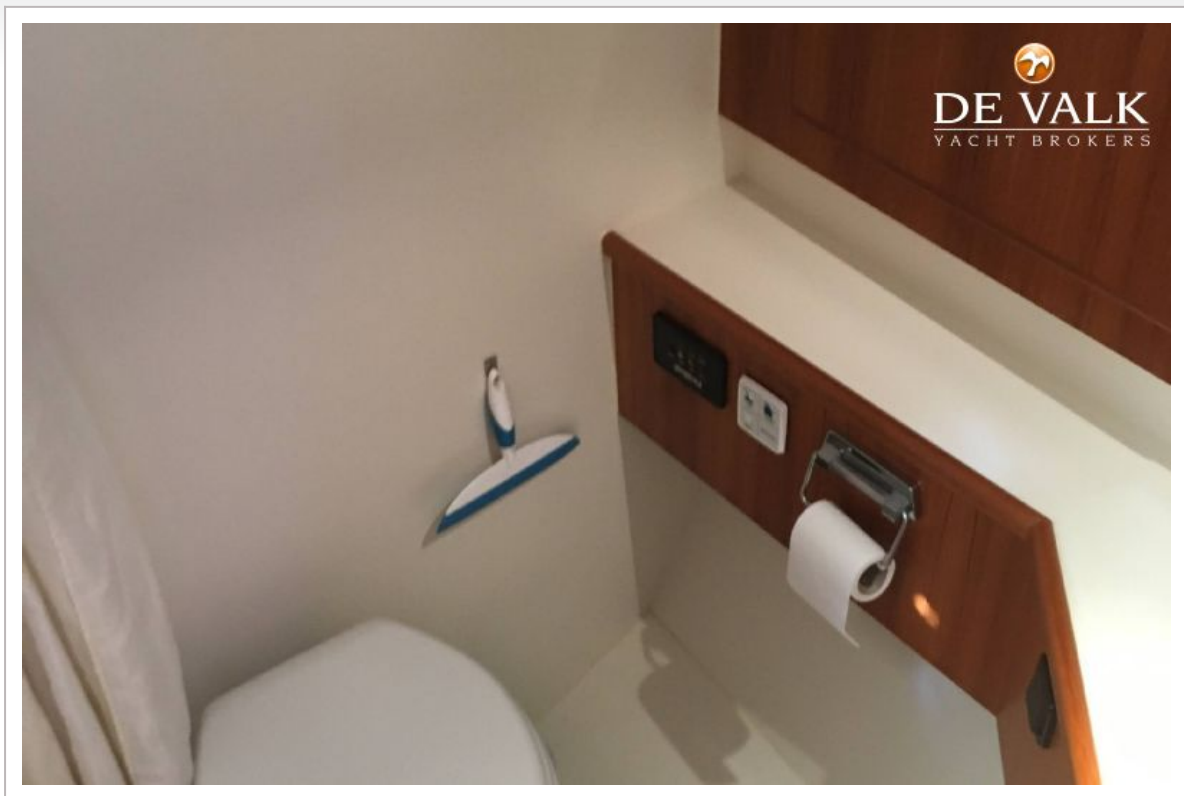


REGO STANDARD 35

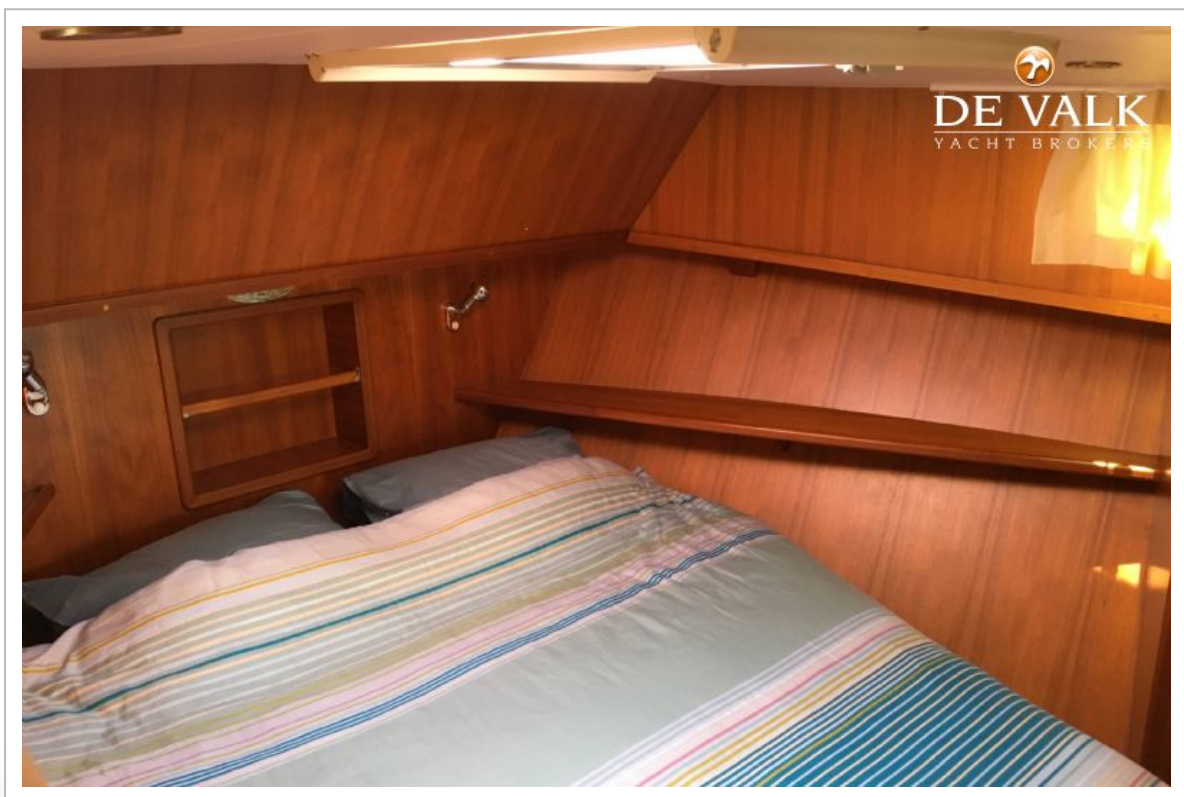
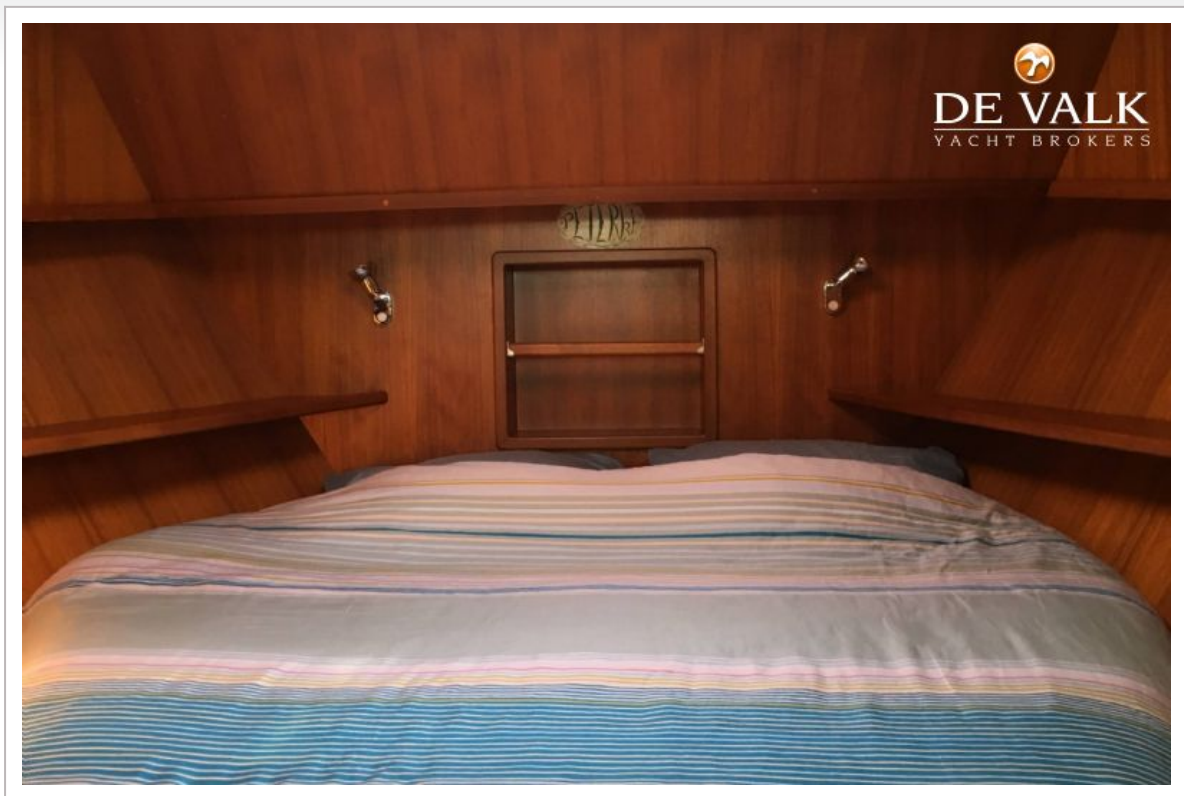


REGO STANDARD 35

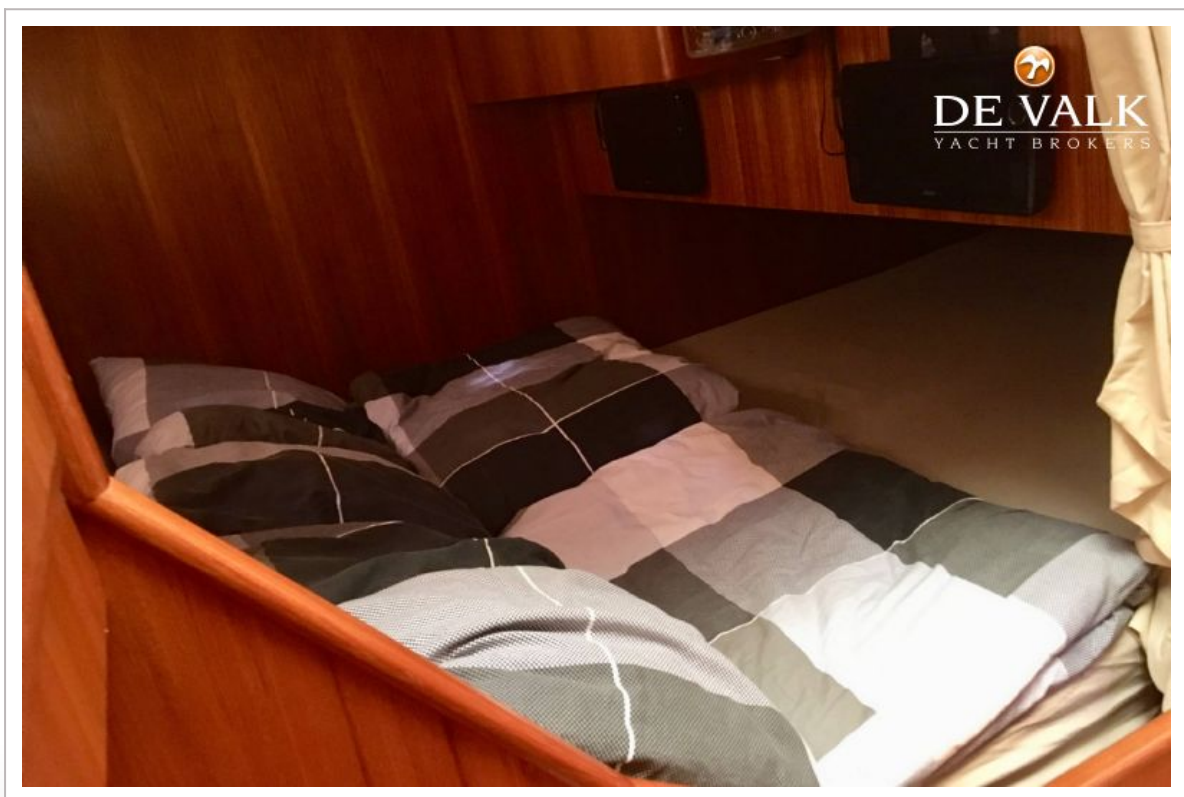
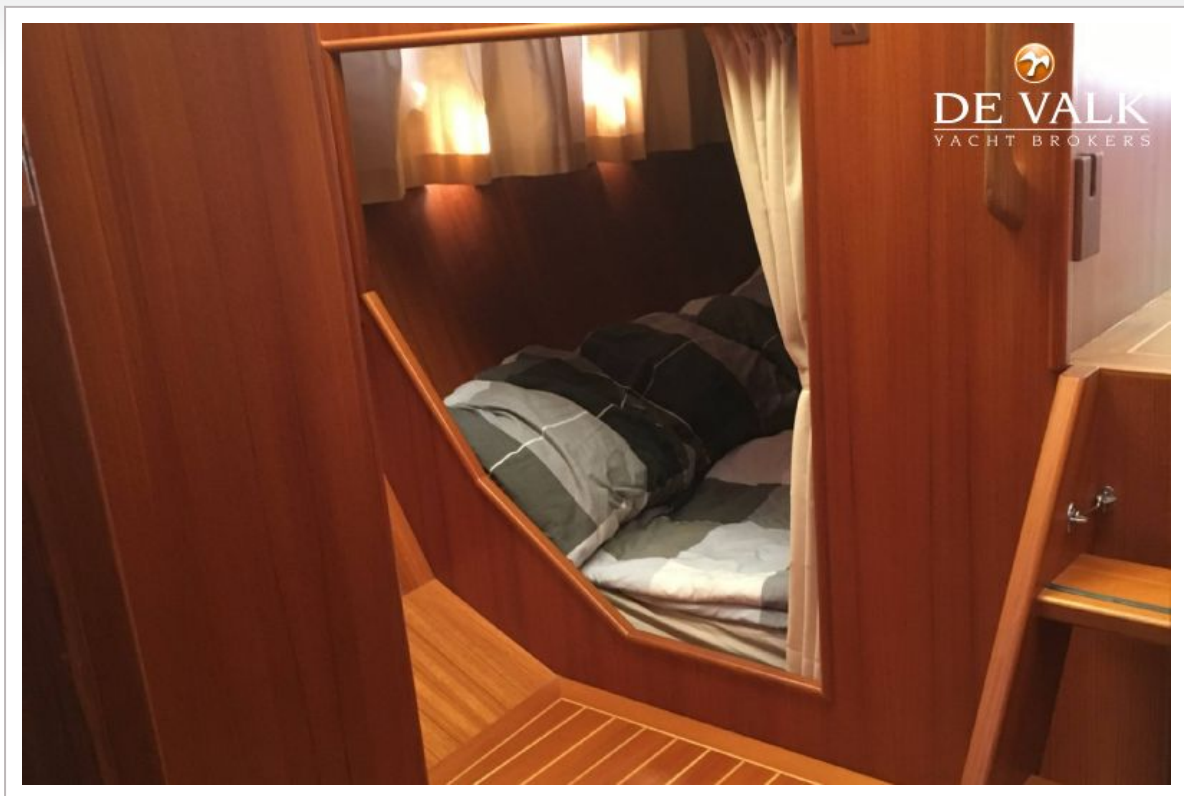




REGO STANDARD 35



REGO STANDARD 35



REGO STANDARD 35

