



DE VALK
YACHT BROKERS



VALK CHALLENGER 42 FLYBRIDGE



DE VALK
YACHT BROKERS

VALK CHALLENGER 42 FLYBRIDGE

BROKER'S COMMENTS

This Valk Challenger 42 open cockpit fly bridge is a sturdy built steel motoryacht with the right motorization and equipment, making it possible to stay on board for a longer time. The spacious open cockpit can be completely closed with a cockpitcover and from the large upperdeck you can drive "Eleonora S" easily and enjoying the beautiful view in the meantime. A must to see this beautiful trawler. You are very welcome to make an appointment and visit this Valk Challenger 42 "Eleonora S".

Mark Hesselmans

SPECIFICATIONS

| | | | |
|---------------------|-------------------------|----------------|-------------------------|
| Dimensions | 13.16 x 3.99 x 1.10 (m) | Builder | Van der Valk Waalwijk |
| Built | 1993 | Cabins | 1 |
| Material | Steel | Berths | 4 |
| Engine(s) | 1 x Daf 575 diesel | Hp/Kw | 120.00 (hp), 88.00 (kw) |
| Asking price | sold (VAT) | Lying | at sales office |

CONTACT

| | | | |
|---------------------|---|------------------|----------------------|
| Sales office | De Valk Loosdrecht | Telephone | +31 35 582 90 30 |
| Address | 't Breukeleveense Meentje 6 1231 LM Loosdrecht / Wijdemeren The Netherlands | E-mail | loosdrecht@devalk.nl |

DISCLAIMER

These particulars are given in good faith as supplied but cannot be guaranteed.



VALK CHALLENGER 42 FLYBRIDGE

GENERAL

| | |
|-------------------------------------|------------------------------|
| Model | VALK CHALLENGER 42 FLYBRIDGE |
| Type | motor yacht |
| LOA (m) | 13,16 |
| Beam (m) | 3,99 |
| Draft (m) | 1,10 |
| Air draft (m) | 3,15 |
| Headroom (m) | 1,95 |
| Year built | 1993 |
| Builder | Van der Valk Waalwijk |
| Country | The Netherlands |
| Displacement (t) | 13 |
| CE norm | NA |
| Hull material | steel |
| Superstructure material | steel |
| Rubbing strake | steel |
| Deck material | steel |
| Deck finish | non-skid paint |
| Antifouling (year) | 2018 |
| Window frame | aluminium |
| Window material | glass Tinted |
| Portholes | aluminium |
| Fuel tank (litre) | steel 750L |
| Level indicator (fuel tank) | yes |
| Freshwater tank (litre) | polyethylene 2x 220L |
| Level indicator (freshwater) | yes |
| Wheel steering | hydraulic |
| Inside helm position | yes |
| Flybridge helm position | hydraulic |

ACCOMMODATION



VALK CHALLENGER 42 FLYBRIDGE

| | |
|------------------------------|---------------------------------|
| Cabins | 1 |
| Berths | 4 |
| Interior | teak Laminate |
| Floor | Laminate |
| Open cockpit | yes |
| Headroom saloon (m) | 1,95 |
| Heating | calorgas ducted hot air Trumac |
| Galley | yes |
| Countertop | Composite |
| Sink | stainless steel |
| Cooker | calor gas Seinflo 4 burner |
| Microwave | HE Holland electro Prochef 800W |
| Fridge | Electrolux |
| Freezer | yes |
| Hot water system | geyser on Calor Gas |
| Water pressure system | electrical Hydrofoor |
| Owners cabin | double bed |
| Wardrobe | hanging/drawers/shelves |
| Toilet | yes |
| Toilet system | electric |
| Wash basin | in the bathroom |
| Shower | shared |
| Bath tub | shared |

MACHINERY

| | |
|----------------------|--------|
| No of engines | 1 |
| Make | Daf |
| Type | 575 |
| HP | 120 |
| kW | 88,00 |
| Fuel | diesel |



VALK CHALLENGER 42 FLYBRIDGE

| | |
|--------------------------|---------------------------|
| Engine hours | 1635 |
| Engine cooling system | freshwater heat exchanger |
| Drive | shaft |
| Engine controls | bowden cable |
| Gearbox | hydraulic |
| Bowthruster | electric Cupa |
| Sternthruster | electric Cupa |
| Exhaust | watercooled |
| Propeller type | fixed |
| Propeller shaft material | stainless steel |
| Shaft lubrication | grease |
| Electric bilge pump | yes |
| Batteries | 4x |
| Start battery | 2x 240Ah |
| Service battery | 2x 240Ah |
| Battery charger | yes |
| Inverter | yes |
| Shorepower | with cable |

NAVIGATION

| | |
|------------------------|-------------------------------------|
| Depth sounder | Vetus 2x flybridge indicator defect |
| VHF | Shipmate RS8300 |
| Rudder angle indicator | 2x |

EQUIPMENT

| | |
|------------------|--------------|
| Fixed windscreen | yes |
| Cockpit cover | With screens |
| Bimini | yes |
| Cockpit cushions | yes |
| Cockpit table | yes |
| Cockpit chairs | yes |



VALK CHALLENGER 42 FLYBRIDGE

| | |
|-----------------------------------|--------------------------|
| Bathing platform | yes |
| Boarding ladder | stainless steel |
| Deck shower | yes |
| Anchor | 2x |
| Anchor chain | yes |
| Windlass | manual |
| Windlass aft | manual |
| Deck wash | With separate hydrophore |
| Sea railing | stainless steel |
| Grab rail (superstructure) | stainless steel |
| Railing side opening gates | yes |
| Wiper | yes |
| Horn | electric |
| TV | Ricatech |
| Radio-cd player | Pioneer RDS 4x 50W |



VALK CHALLENGER 42 FLYBRIDGE



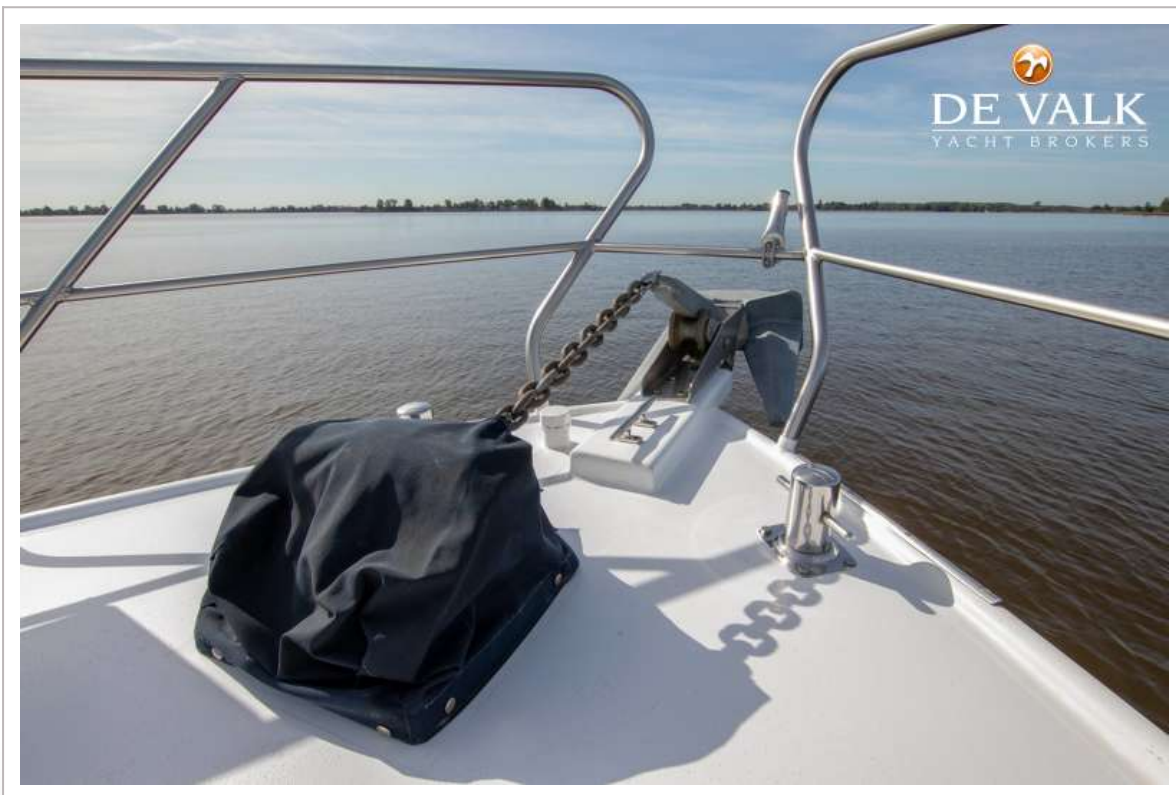
VALK CHALLENGER 42 FLYBRIDGE



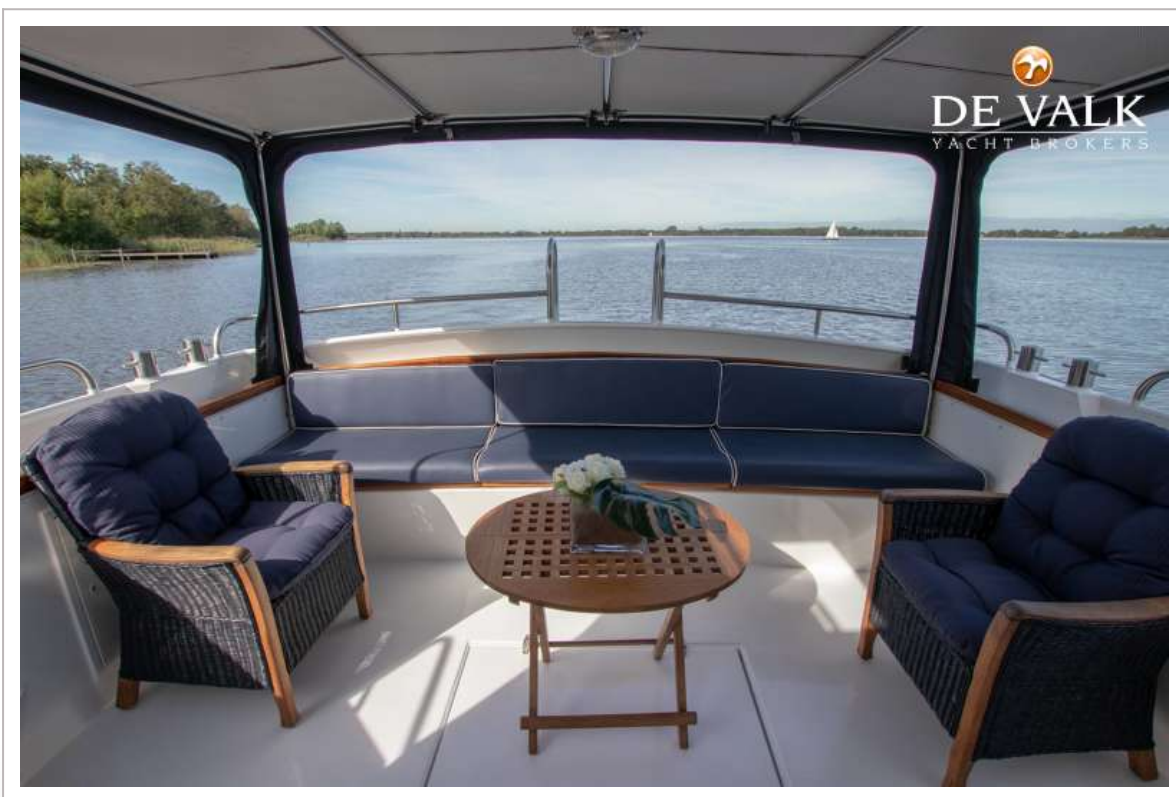
VALK CHALLENGER 42 FLYBRIDGE



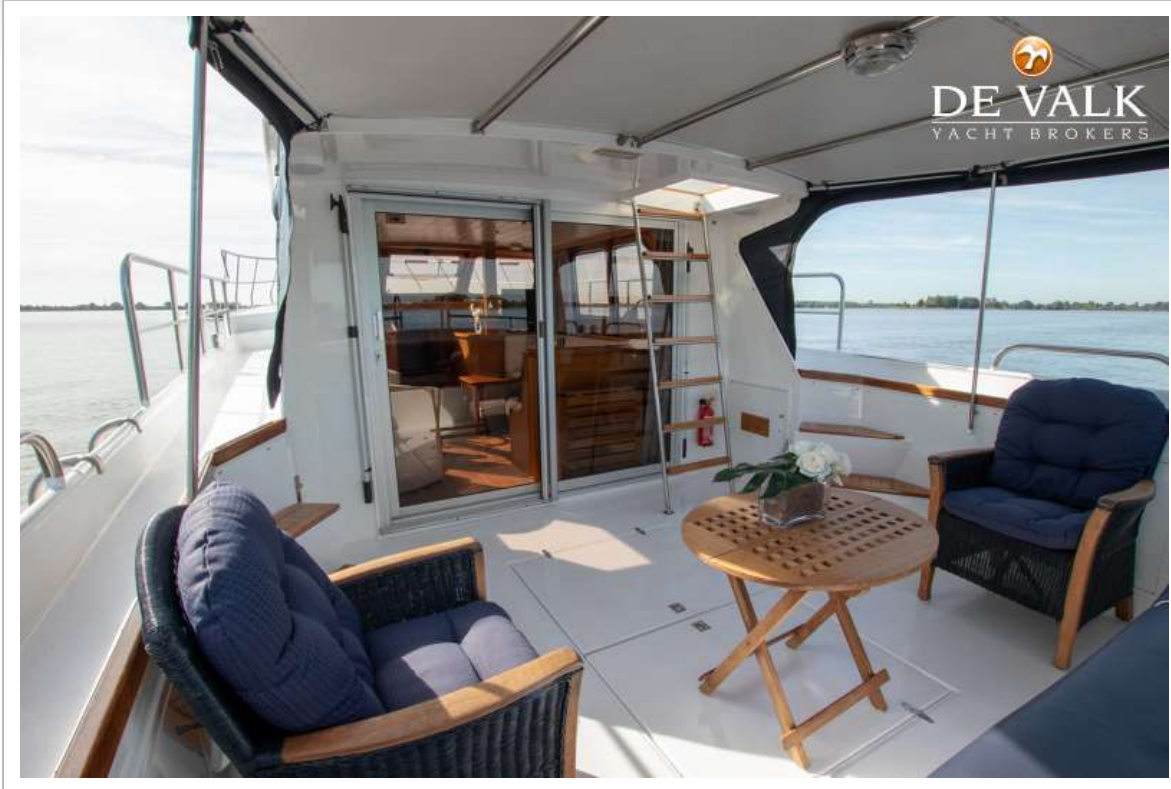
VALK CHALLENGER 42 FLYBRIDGE



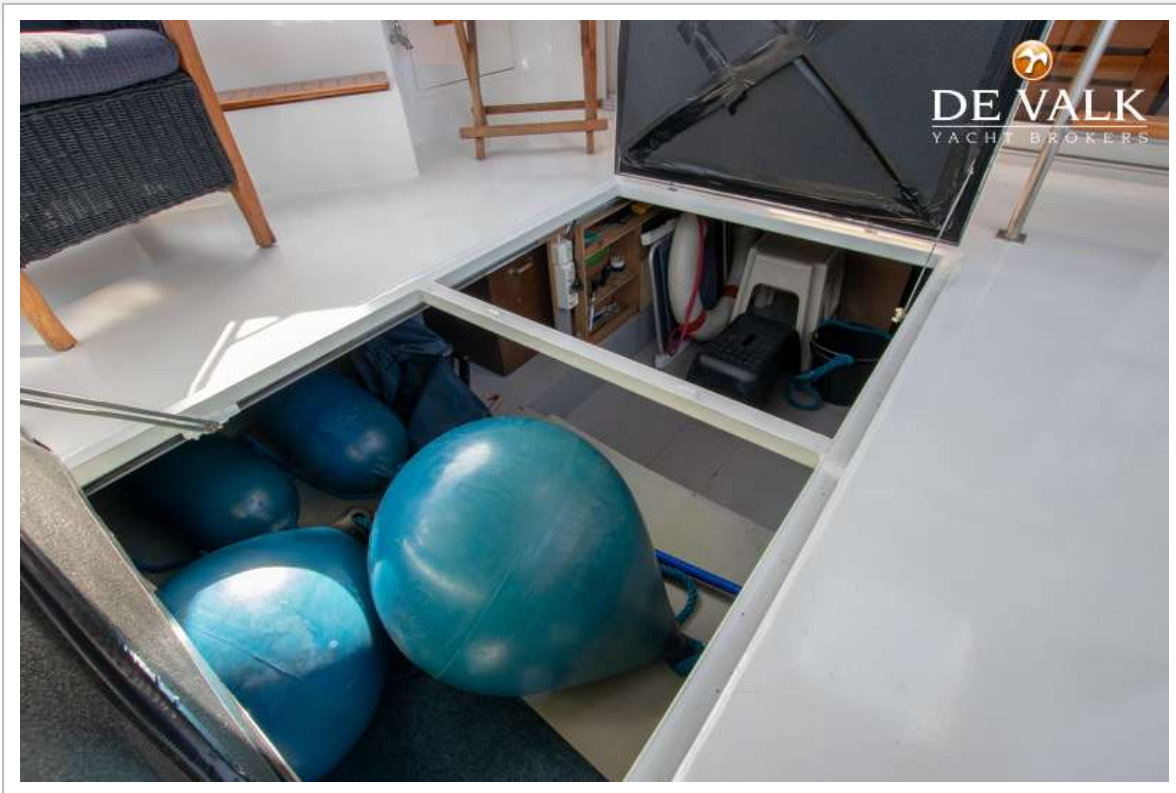
VALK CHALLENGER 42 FLYBRIDGE



VALK CHALLENGER 42 FLYBRIDGE



VALK CHALLENGER 42 FLYBRIDGE



VALK CHALLENGER 42 FLYBRIDGE



VALK CHALLENGER 42 FLYBRIDGE



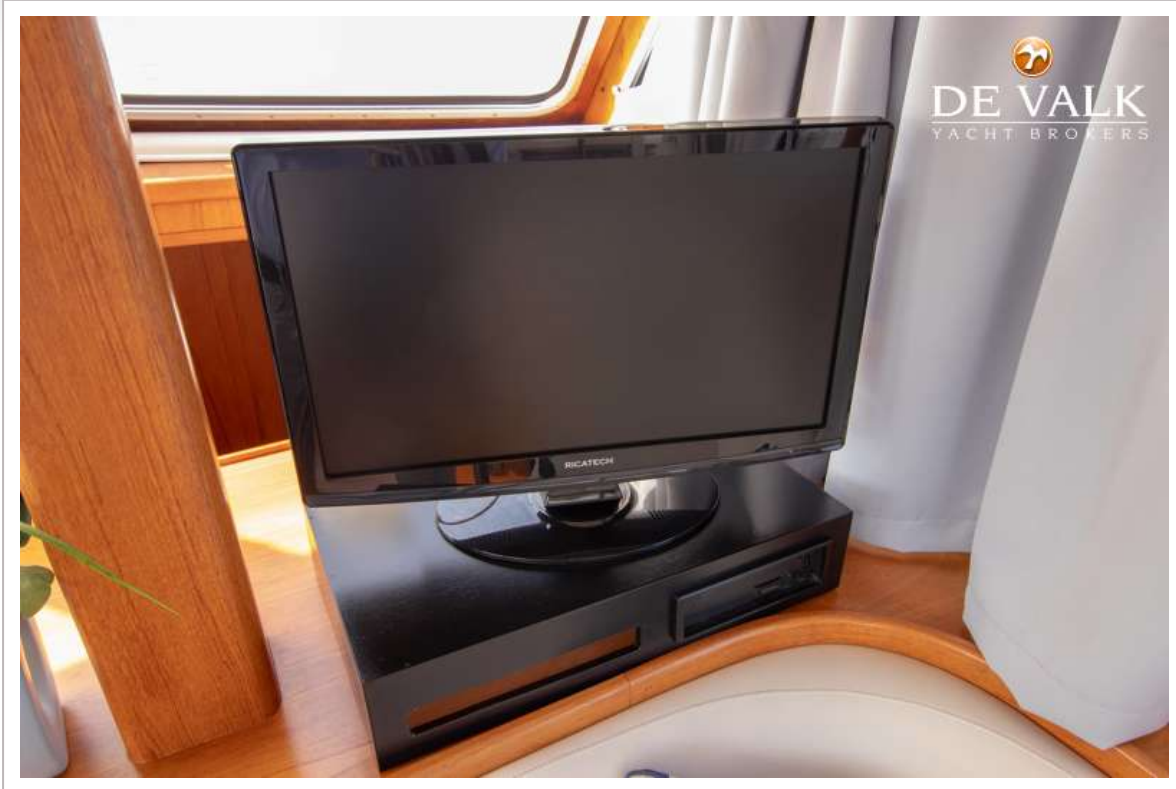
VALK CHALLENGER 42 FLYBRIDGE



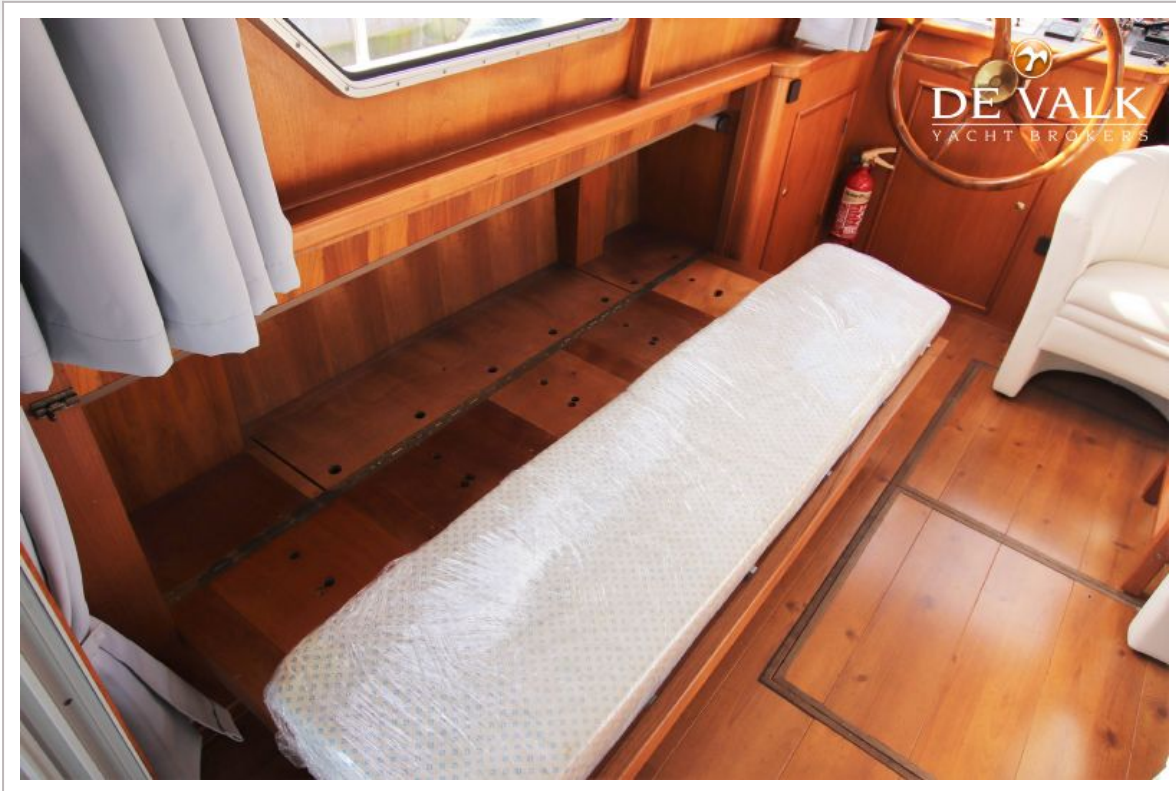
VALK CHALLENGER 42 FLYBRIDGE



VALK CHALLENGER 42 FLYBRIDGE



VALK CHALLENGER 42 FLYBRIDGE



VALK CHALLENGER 42 FLYBRIDGE



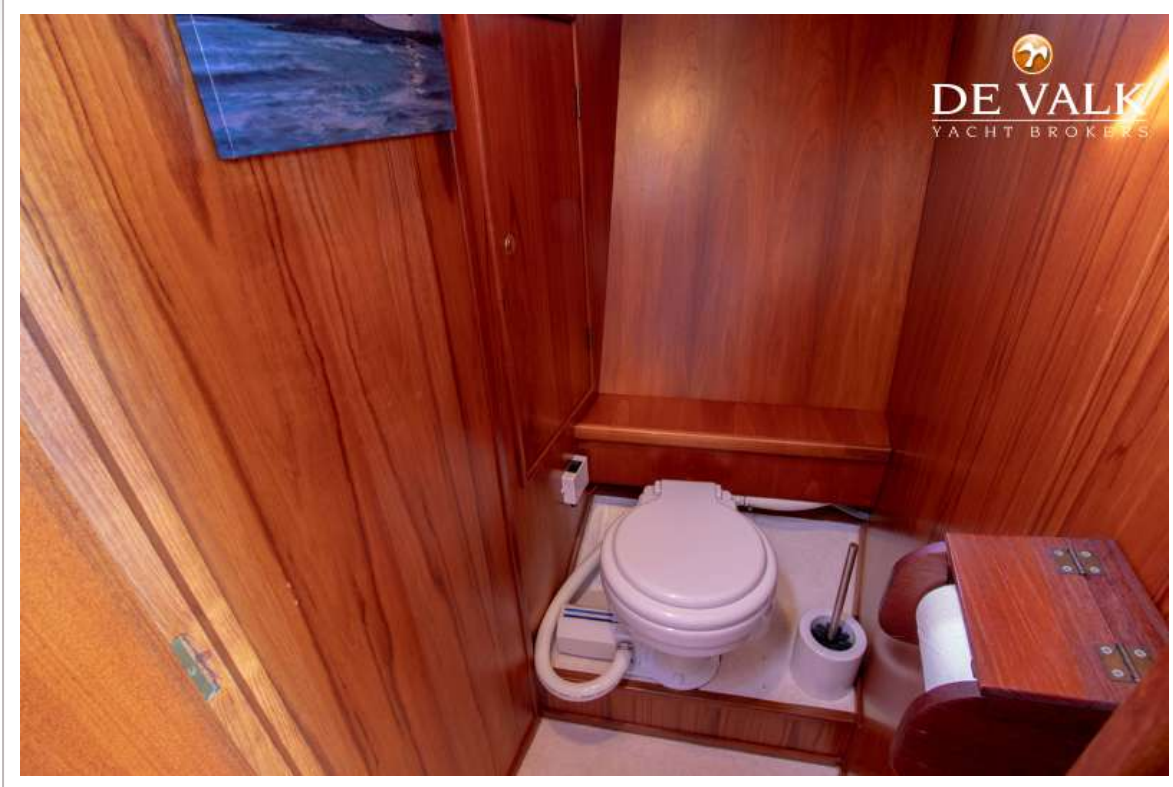
VALK CHALLENGER 42 FLYBRIDGE



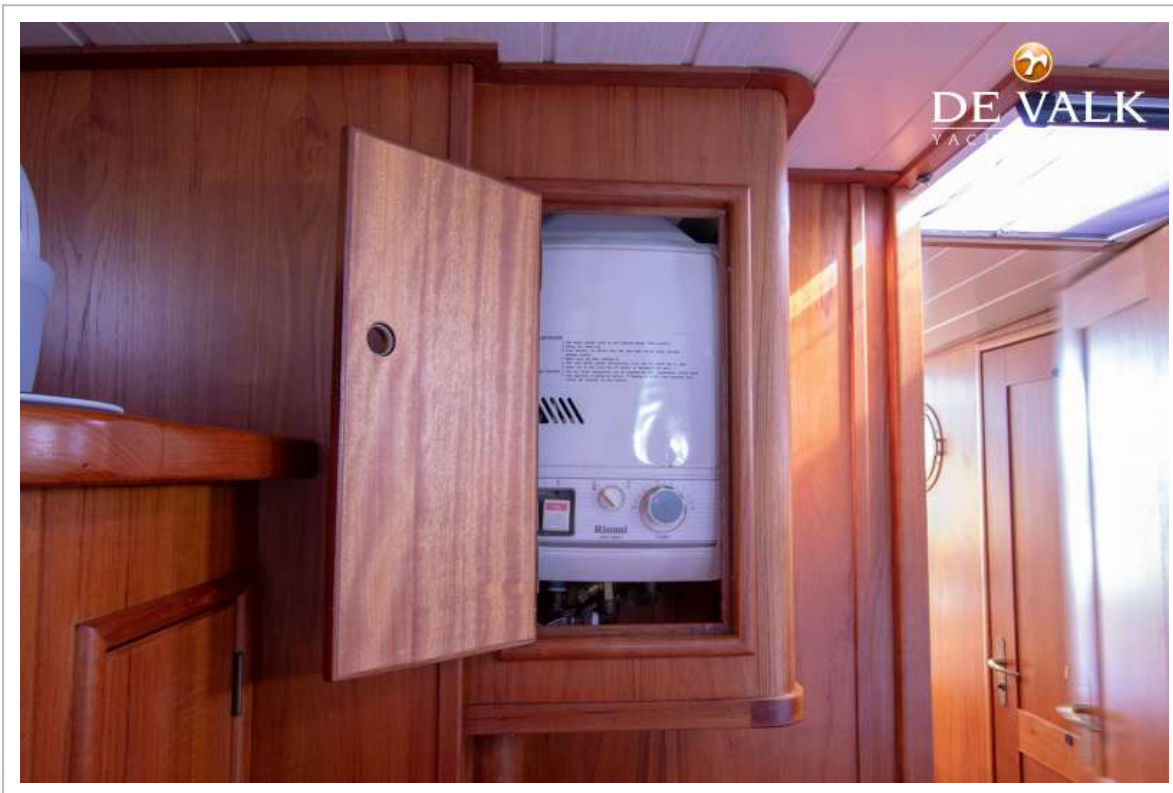
VALK CHALLENGER 42 FLYBRIDGE



VALK CHALLENGER 42 FLYBRIDGE



VALK CHALLENGER 42 FLYBRIDGE



VALK CHALLENGER 42 FLYBRIDGE

