



## DOGGERSBANK 1300

# DOGGERSBANK 1300

## BROKER'S COMMENTS

This Doggersbank 1300 has been build by Akerboom and designed by Vripack. The Doggersbank is well known and a example of Dutch quality build. She has a 2 cabin layout and enough space to house up to 6 people. When viewing the Doggersbank you won't believe that she is from '77.

*Mark Hesselmans*

## SPECIFICATIONS

<b>Dimensions</b>	13.00 x 3.85 x 1.25 (m)	<b>Builder</b>	Akerboom
<b>Built</b>	1977	<b>Cabins</b>	2
<b>Material</b>	Steel	<b>Berths</b>	6
<b>Engine(s)</b>	2 x Ford Lehman diesel	<b>Hp/Kw</b>	2 x 100.00 (hp), 73.00 (kw)
<b>Asking price</b>	sold (VAT )	<b>Lying</b>	elsewhere / Not at sales office

## CONTACT

<b>Sales office</b>	De Valk Loosdrecht B.V.	<b>Telephone</b>	+31 (0)35 582 90 30
<b>Address</b>	't Breukeleveense Meentje 6 1231LM Loosdrecht / Wijdmeren NL	<b>E-mail</b>	loosdrecht@devalk.nl

## DISCLAIMER

These particulars are given in good faith as supplied but cannot be guaranteed.



## GENERAL

Model	DOGGERSBANK 1300
Type	motor yacht
LOA (m)	13,00
Beam (m)	3,85
Draft (m)	1,25
Air draft (m)	3,85
Air draft min (m)	3,25
Headroom (m)	1,95
Year built	1977
Builder	Akerboom
Country	The Netherlands
Designer	Vripack
Displacement (t)	22
CE norm	NA
Hull material	steel
Hull shape	round-bilged
Bilge keels	yes
Superstructure material	steel
Rubbing strake	steel
Deck material	steel
Deck finish	teak
Cockpit deck finish	teak
Antifouling (year)	2019
Window frame	aluminium
Window material	glass
Mast can be lowered	manual
Steadying sail with mast	yes
Fuel tank (litre)	steel 600
Fuel tank 2 (litre)	steel 600
Level indicator (fuel tank)	yes



Freshwater tank (litre)	stainless steel 700
Level indicator (freshwater)	yes
Wheel steering	hydraulic
Inside helm position	yes
Outside helm position	hydraulic

## ACCOMMODATION

Cabins	2
Berths	6
Interior	mahogany
Floor	teak and holly
Aft deck	yes
Saloon	yes
Headroom saloon (m)	1,95
Sliding roof	manual
Heating	diesel ducted hot air Eberspacher
Aft Cabin	yes
Dinette	yes
Dinette to convert into berth	yes
Sliding door to cockpit	yes
Galley	yes
Countertop	wood
Sink	stainless steel
Cooker	calor gas 4 burner
Fridge	yes
Freezer	In Fridge
Hot water system	220V + engine
Water pressure system	electrical
Kettle	yes
Coffee maker	yes
Owners cabin	double bed



Bed length (m)	2
Wardrobe	hanging/drawers/shelves
Bathroom	en suite
Toilet	en suite
Toilet system	electric
Wash basin	in the bathroom
Shower	en suite
Guest cabin 1	v-bed
Bed length (m)	2
Wardrobe	drawers and shelves
Bathroom	shared
Toilet	en suite
Toilet system	manual
Wash basin	in the bathroom
Shower	shared

## MACHINERY

No of engines	2
Make	Ford Lehman
HP	100,00
kW	73,00
Fuel	diesel
Engine cooling system	freshwater heat exchanger
Engine controls	bowden cable
Gearbox	mechanical
Exhaust	watercooled
Propeller type	fixed
Propeller blades	3
Propeller shaft material	steel
Shaft lubrication	grease
Manual bilge pump	yes



Electric bilge pump	yes
Start battery	2
Service battery	2
Battery charger/inverter	Victron Combi 24/2000/50
Shorepower	with cable

## NAVIGATION

Electric compass	Autohelm ST7000
Depth sounder/log	Raymarine Tridata
VHF	Sailor
Autopilot	Autohelm ST7000

## EQUIPMENT

Fixed windscreen	yes
Cockpit cushions	yes
Cockpit table	yes
Cockpit chairs	yes
Bathing platform	yes
Boarding ladder	steel
Anchor	
Windlass	electrical
Deck wash	yes
Dinghy	
Outboard	yes
Davits	stainless steel
Davits controls	manual
Sea railing	steel
Grab rail (superstructure)	steel
Railing side opening gates	yes
Wiper	2x
Clearview window	yes



Horn	air pressure
Fenders	yes
Mooring lines	yes
Radio-cd player	Kenwood
Speakers in salon	yes
Clock - barometer	yes

## RIGGING

Material mast	wood
---------------	------







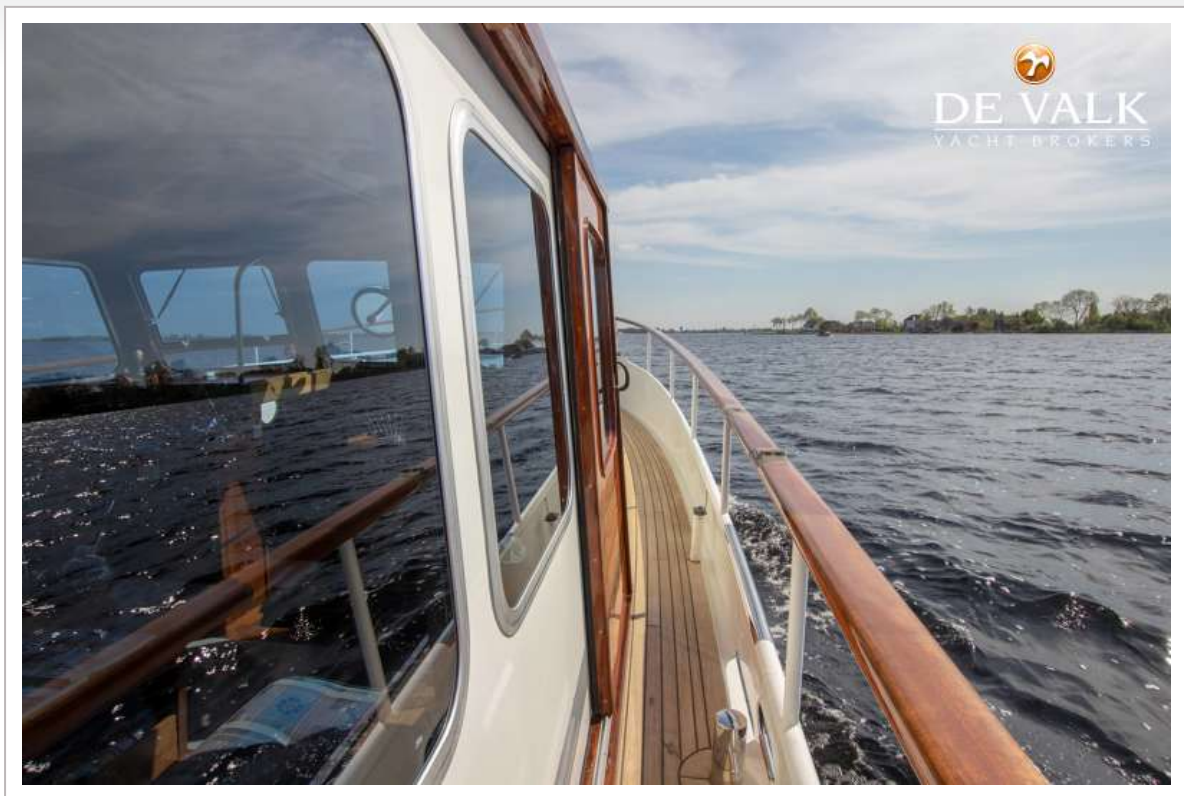




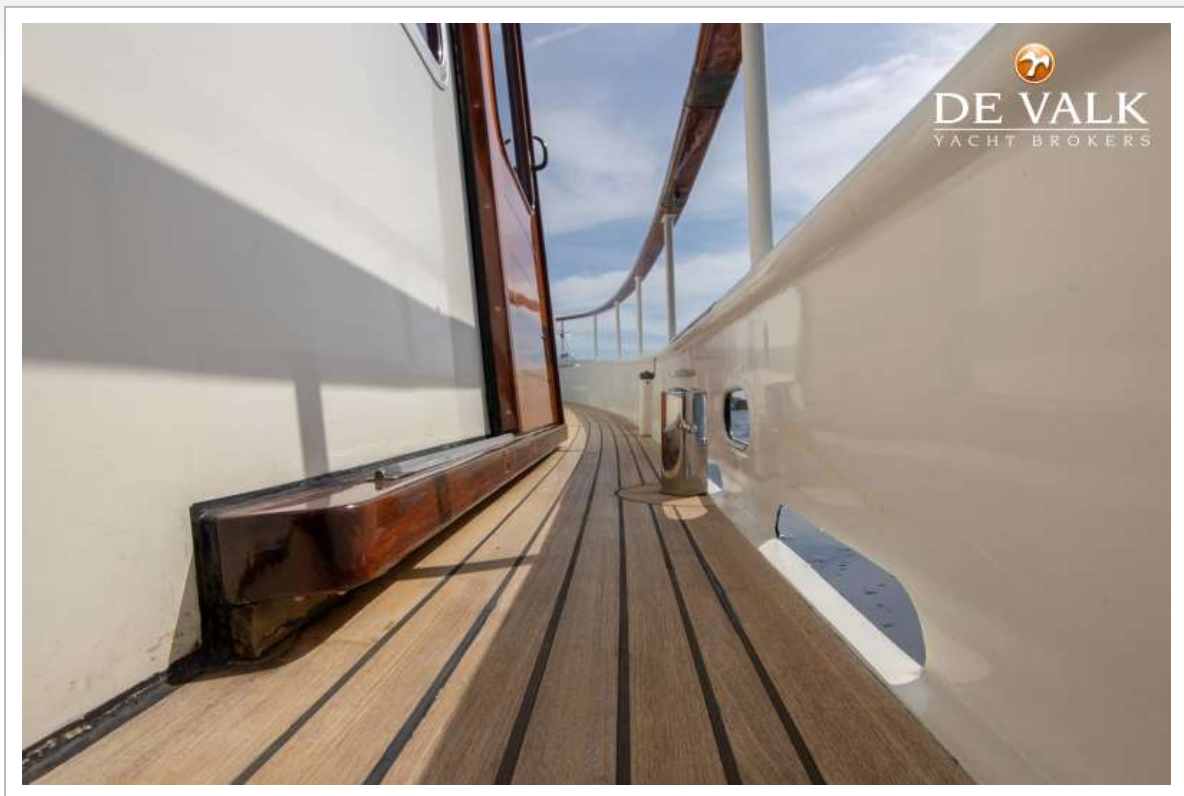
# DOGGERSBANK 1300







# DOGGERSBANK 1300





# DOGGERSBANK 1300



# DOGGERSBANK 1300





# DOGGERSBANK 1300





# DOGGERSBANK 1300



# DOGGERSBANK 1300





# DOGGERSBANK 1300



# DOGGERSBANK 1300





# DOGGERSBANK 1300

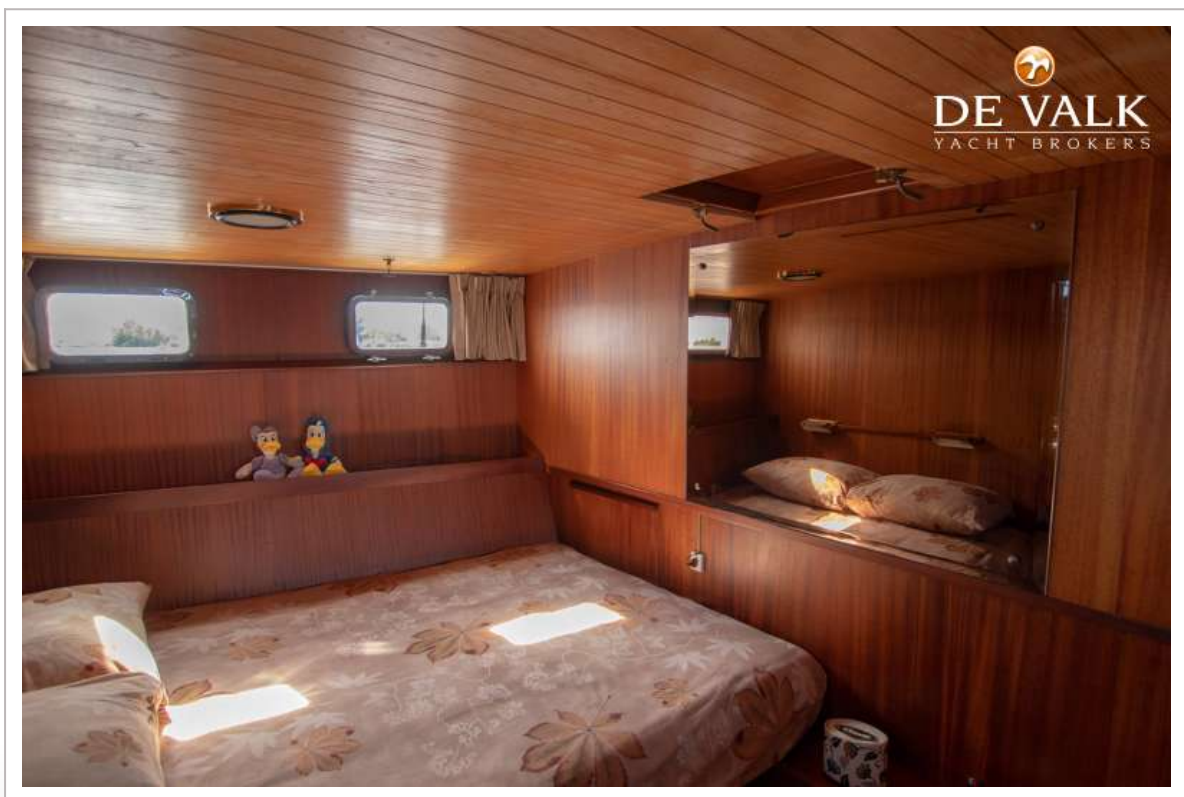
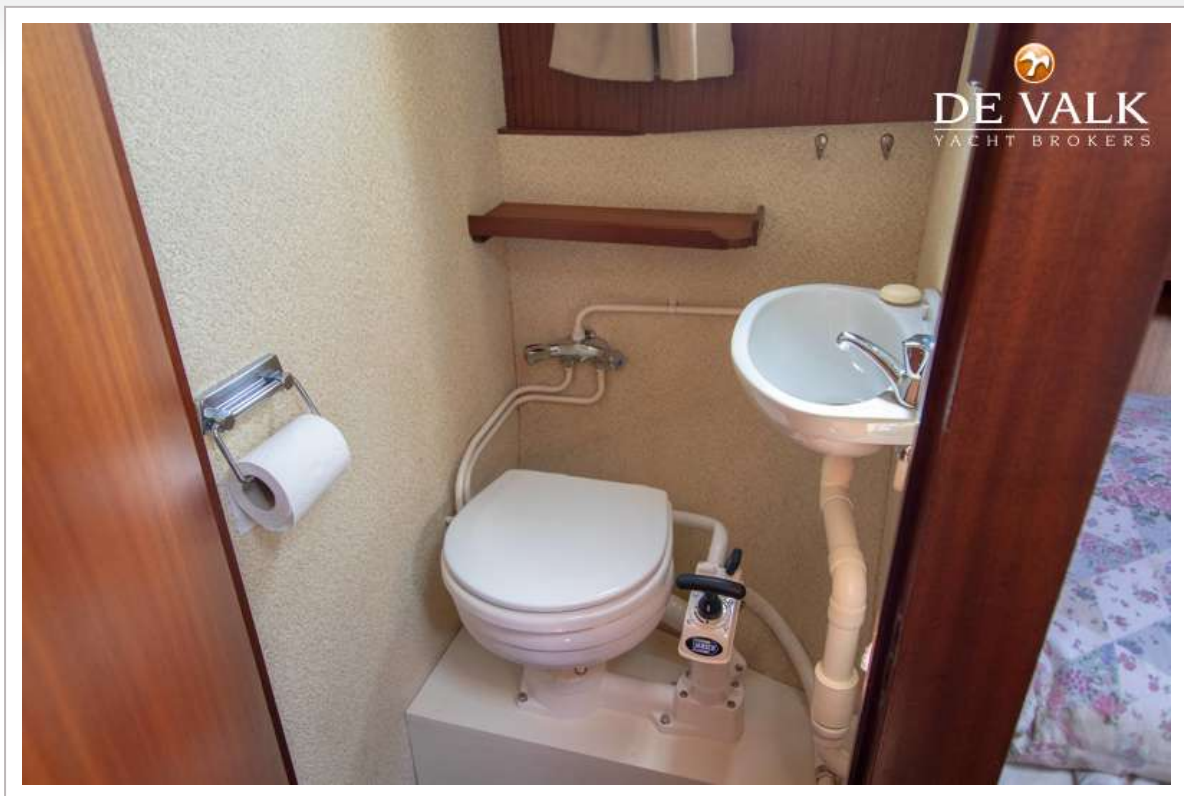


## DOGGERSBANK 1300

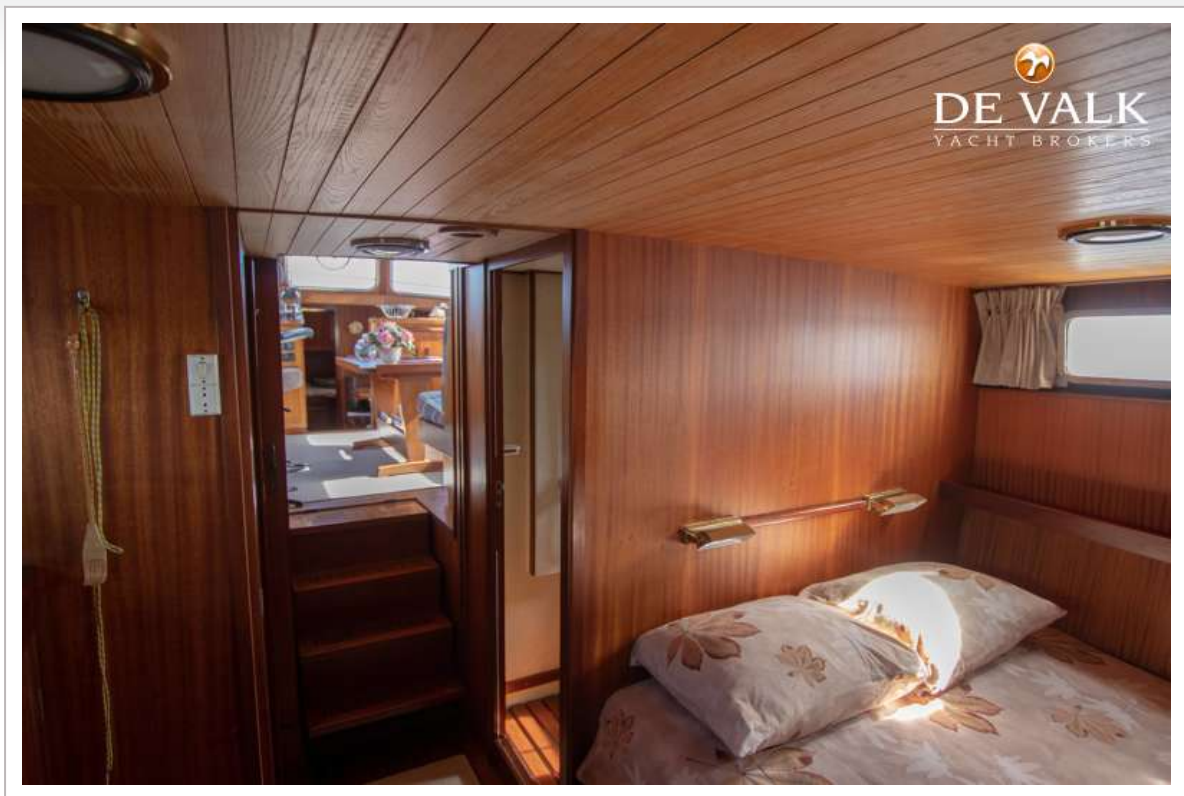




# DOGGERSBANK 1300



# DOGGERSBANK 1300





# DOGGERSBANK 1300

