



## MYABCA 41 CLASSIC



# MYABCA 41 CLASSIC

## BROKER'S COMMENTS

MYABCA, this good looking yacht shows a lot of similarity with the design of the well-known Spanish fishing ships. These fishing ships are known for their seaworthiness, and were therefore the example in the design of the MYABCA. This sturdy looking motor yacht is ideally suited for the sailing the bigger waterways. The equipment of the 'Duke' shows a.o. a generator and airco. The engines are overhauled in 2018.

*Koen Mulder*

## SPECIFICATIONS

<b>Dimensions</b>	13.59 x 4.30 x 1.30 (m)	<b>Builder</b>	Construcciones Navales de Mallorca
<b>Built</b>	1989	<b>Cabins</b>	2
<b>Material</b>	GRP	<b>Berths</b>	6
<b>Engine(s)</b>	2 x Volvo Penta diesel	<b>Hp/Kw</b>	2 x 200.00 (hp), 147.00 (kw)
<b>Asking price</b>	sold (VAT )	<b>Lying</b>	at sales office

## CONTACT

<b>Sales office</b>	De Valk Loosdrecht B.V.	<b>Telephone</b>	+31 (0)35 582 90 30
<b>Address</b>	't Breukeleveense Meentje 6 1231LM Loosdrecht / Wijdmeren NL	<b>E-mail</b>	loosdrecht@devalk.nl

## DISCLAIMER

These particulars are given in good faith as supplied but cannot be guaranteed.



# MYABCA 41 CLASSIC

## GENERAL

Model	MYABCA 41 CLASSIC
Type	motor yacht
LOA (m)	13,59
Beam (m)	4,30
Draft (m)	1,30
Year built	1989
Builder	Construcciones Navales de Mallorca
Country	Spain
Displacement (t)	14,7
CE norm	NA
Hull material	GRP
Hull colour	blue
Hull shape	round-bilged
Superstructure material	GRP
Rubbing strake	yes
Deck material	GRP
Deck finish	teak
Superstructure deck finish	teak
Cockpit deck finish	teak
Window frame	aluminium
Window material	glass Vetus
Portholes	aluminium
Fuel tank (litre)	2X 800
Level indicator (fuel tank)	Yazaki
Freshwater tank (litre)	450
Level indicator (freshwater)	Yazaki
Wheel steering	hydraulic
Inside helm position	yes

## ACCOMMODATION



# MYABCA 41 CLASSIC

Cabins	2
Berths	6
Interior	mahogany
Floor	carpet
Open cockpit	yes
Headroom saloon (m)	2,00
Heating	diesel ducted hot air Webasto
Air-conditioning	Frigoboat SCF 12 H
Dinette	yes
Opening door to cockpit	yes
Galley	yes
Countertop	marble
Sink	stainless steel
Cooker	electric Force 10
Oven	Silvercrest oven & grill
Fridge	Isotherm 42W 85Ltr
Hot water system	yes
Water pressure system	electrical
Owners cabin	double bed
Bed length (m)	2,00
Wardrobe	hanging and drawers
Bathroom	separate
Toilet	separate
Toilet system	manual Jabsco
Wash basin	in the bathroom
Shower	separate
Guest cabin 1	twin single
Wardrobe	hanging and shelves
Bathroom	separate
Toilet	separate
Toilet system	electric
Wash basin	in the bathroom



Shower separate

## MACHINERY

No of engines	2
Make	Volvo Penta
HP	200
kW	147
Fuel	diesel
Year installed	1989
Year of overhaul	2017
Maximum speed (kn)	14,00
Cruising speed (kn)	8,00
Consumption (l/hr)	10,00
Engine hours	3173/2790
Engine cooling system	freshwater heat exchanger
Drive	shaft
Engine controls	bowden cable
Gearbox	mechanical
Propeller blades	4
Propeller shaft material	steel
Manual bilge pump	yes
Electric bilge pump	yes
Electrical installation	12/220 Volt
Generator	yes
Battery charger	12V/20Amp
Shorepower	with cable

## NAVIGATION

Compass	Plastimo contest 130
Depth sounder	Stowe
Log	Stowe



VHF	M-Tech SX 35 DSC
Autopilot	Cetrek 721
GPS	Geonav 6 Sunshine
Navigation lights	yes
Searchlight	yes

## EQUIPMENT

Fixed windscreen	yes
Cockpit cover	yes
Bathing platform	yes
Boarding ladder	stainless steel
Anchor	D.A.T.C. 20Kg
Anchor chain	yes
Windlass	electrical Tigres
Deck wash	yes
Sea railing	stainless steel
Grab rail (superstructure)	wood
Railing side opening gates	yes
Horn	electric Vetus
Radio-cd player	Pioneer DEH-1900R
Speakers in salon	Blaupunkt
Speakers in cabin	Blaupunkt
Clock - barometer	Plastimo



# MYABCA 41 CLASSIC



# MYABCA 41 CLASSIC





# MYABCA 41 CLASSIC



# MYABCA 41 CLASSIC



# MYABCA 41 CLASSIC





# MYABCA 41 CLASSIC



# MYABCA 41 CLASSIC





# MYABCA 41 CLASSIC



# MYABCA 41 CLASSIC





# MYABCA 41 CLASSIC

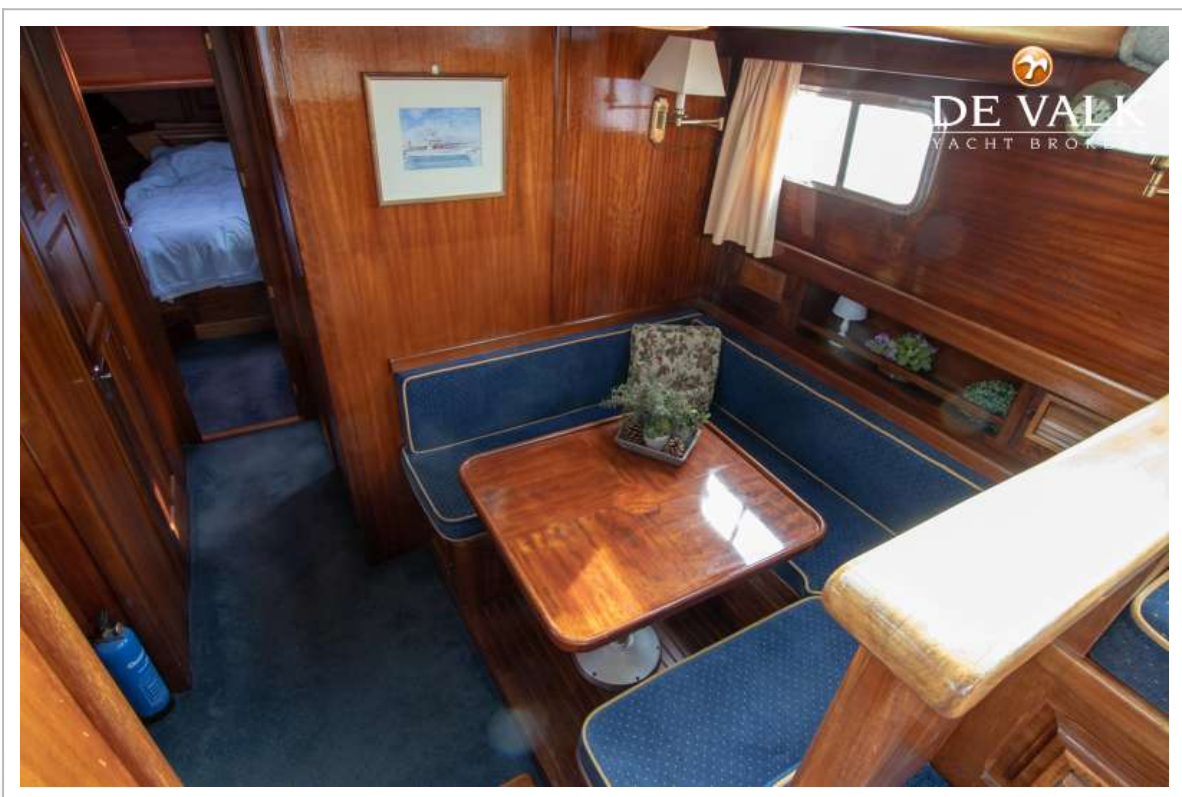




# MYABCA 41 CLASSIC



# MYABCA 41 CLASSIC

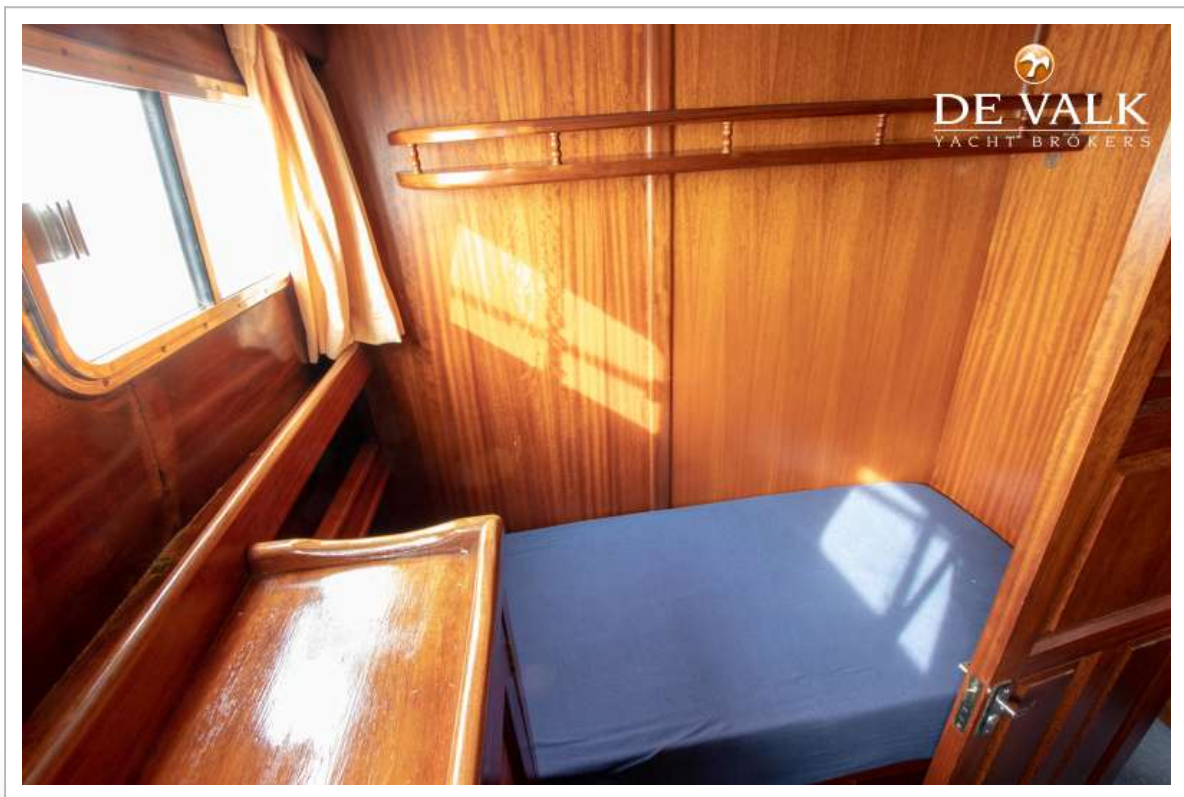




# MYABCA 41 CLASSIC

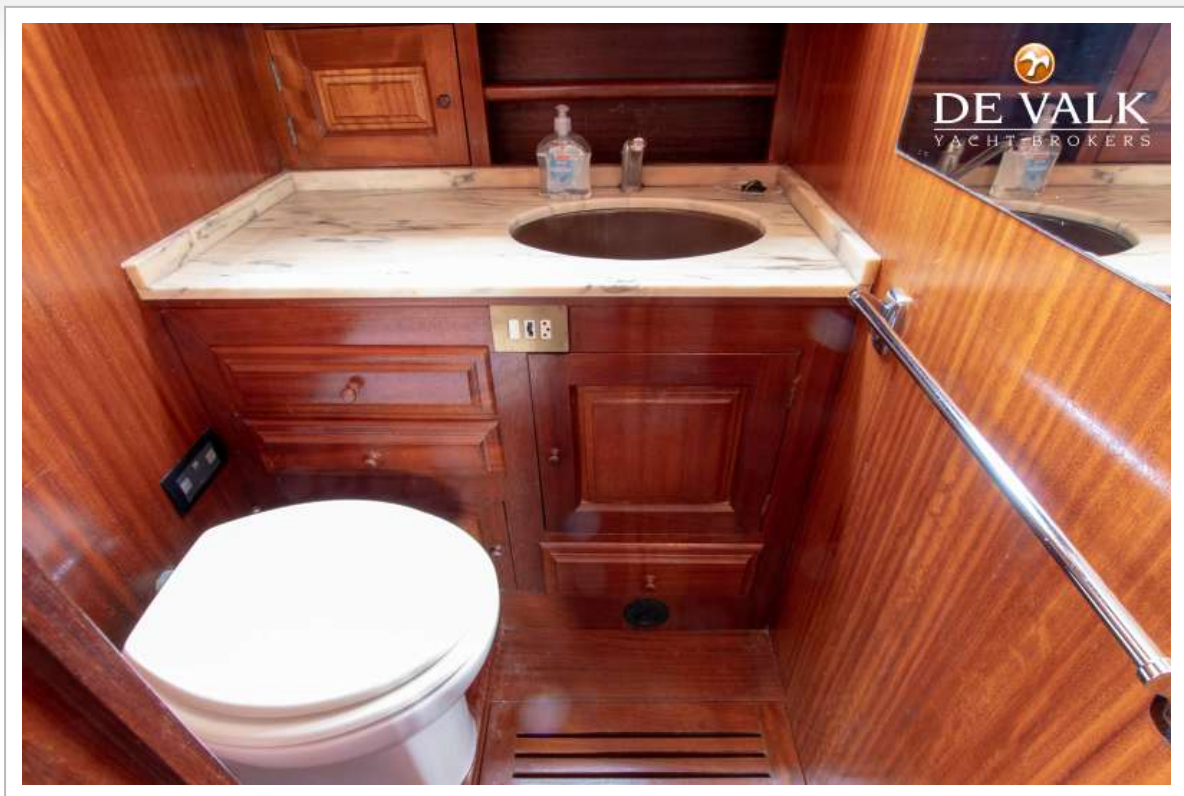


# MYABCA 41 CLASSIC

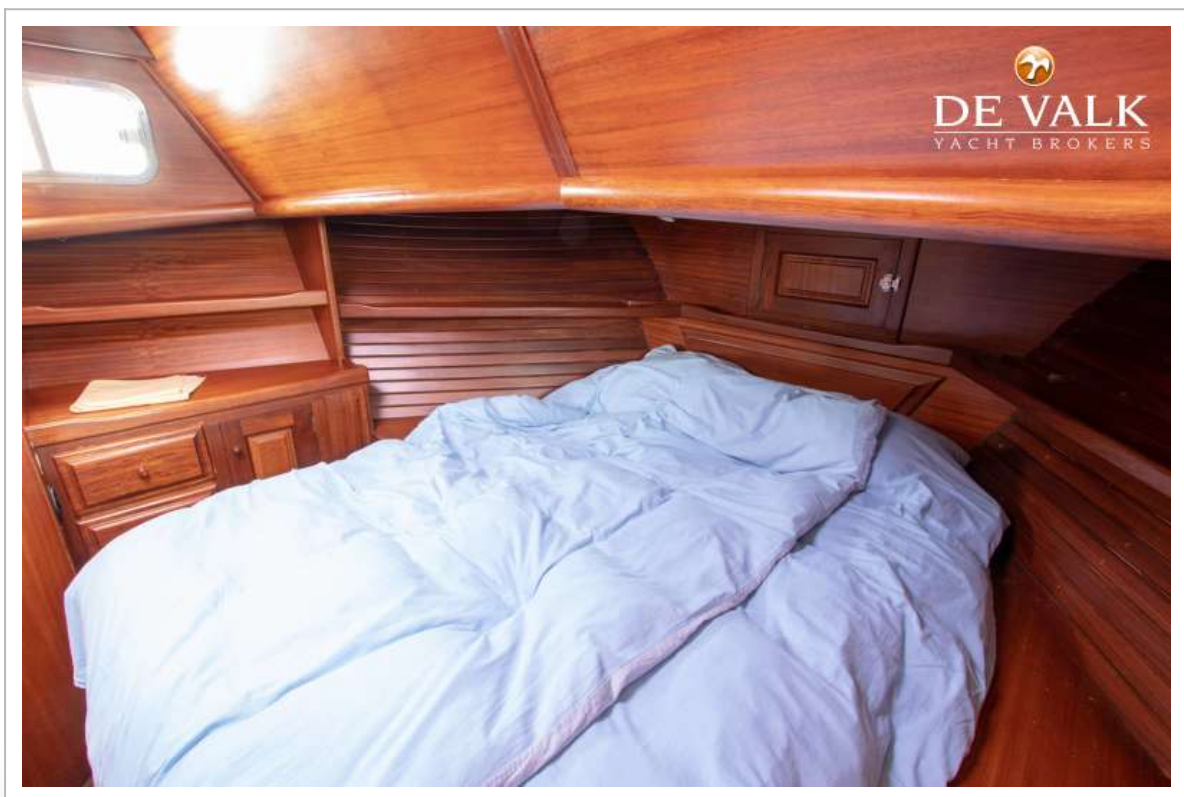
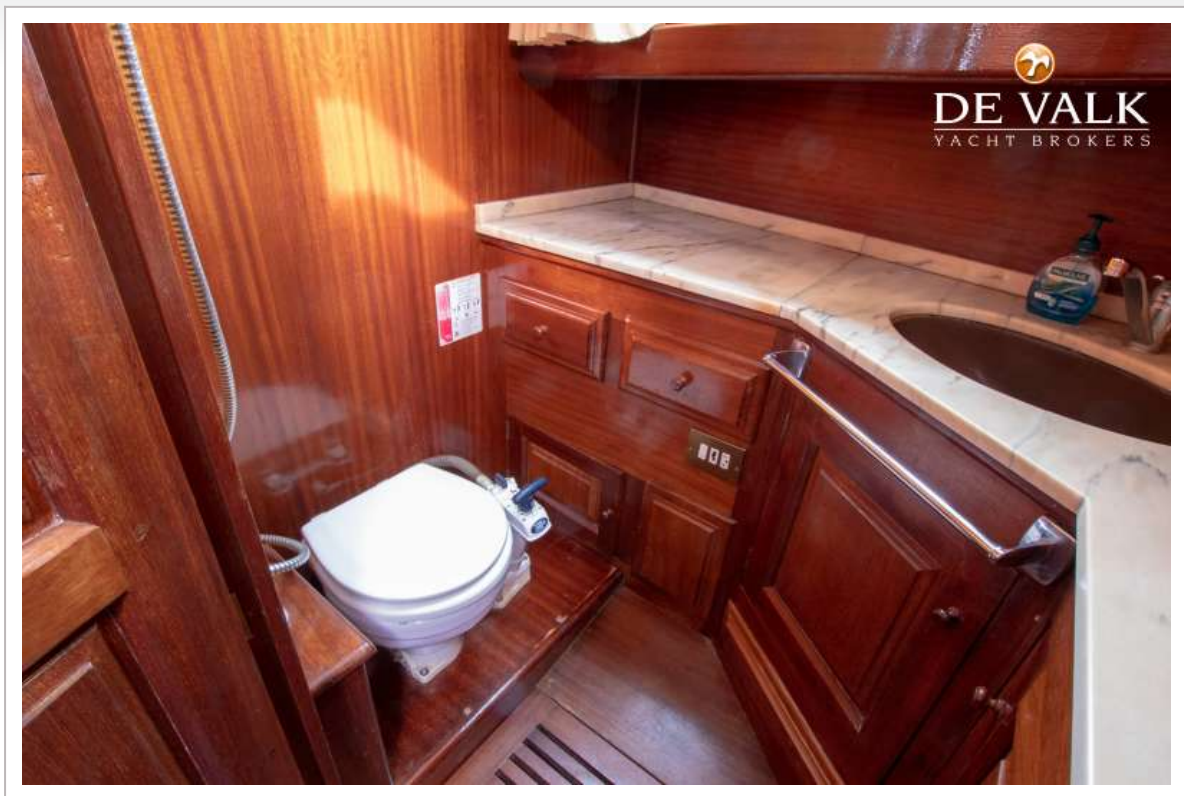




# MYABCA 41 CLASSIC



# MYABCA 41 CLASSIC

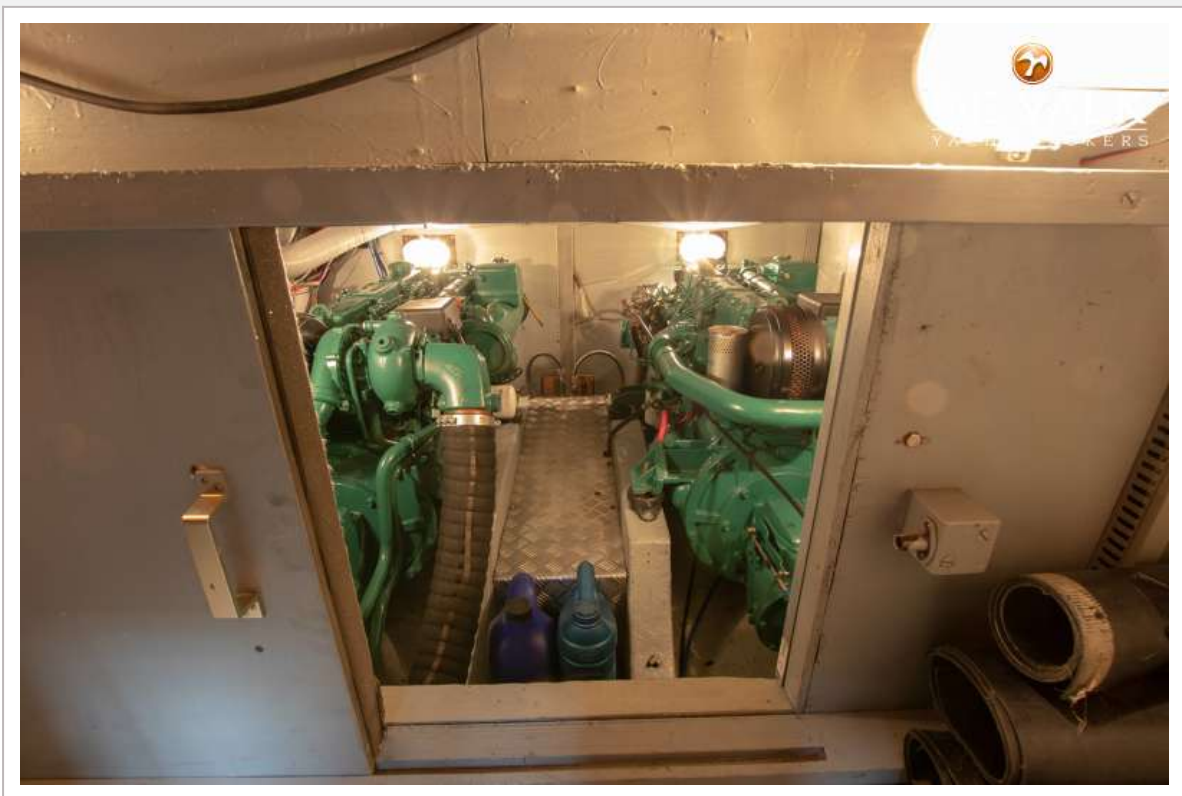




# MYABCA 41 CLASSIC



# MYABCA 41 CLASSIC





# MYABCA 41 CLASSIC

