



SEALINE S37 SPORTS CRUISER

SEALINE S37 SPORTS CRUISER

BROKER'S COMMENTS

The Sealine S37 is a fine example when thinking of the most successful open sport cruiser. The open, jet closable, cockpit assures lots of comfort and fun at any weather type. Due to frost damage the engines were replaced in 2006 and have 1550 hours since. The timeless, clever design gives the S37 great living space and she can even host up to 7 people for the night! When looking for a sportive cruiser you must have a visit at this Sealine S37 at our sales office in Loosdrecht.

Koen Mulder

SPECIFICATIONS

Dimensions	11.30 x 3.70 x 0.95 (m)	Builder	Sealine
Built	1999	Cabins	2
Material	GRP	Berths	7
Engine(s)	2 x Mercruiser D-tronic 4.2L diesel	Hp/Kw	2 x 250.00 (hp), 183.00 (kw)
Asking price	sold (VAT)	Lying	elsewhere / Not at sales office

CONTACT

Sales office	De Valk Loosdrecht B.V.	Telephone	+31 (0)35 582 90 30
Address	't Breukeleveense Meentje 6 1231LM Loosdrecht / Wijdmeren NL	E-mail	loosdrecht@devalk.nl

DISCLAIMER

These particulars are given in good faith as supplied but cannot be guaranteed.



SEALINE S37 SPORTS CRUISER

GENERAL

Model	SEALINE S37 SPORTS CRUISER
Type	motor yacht
LOA (m)	11,30
LWL (m)	8,56
Beam (m)	3,70
Draft (m)	0,95
Air draft (m)	3,80
Year built	1999
Builder	Sealine
Country	Great Britain
CE norm	B
Hull material	GRP
Hull colour	white
Hull shape	deep-V
Superstructure material	GRP
Rubbing strake	rubber
Deck material	GRP
Deck finish	non-skid moulded in
Superstructure deck finish	non-skid moulded in
Cockpit deck finish	teak
Antifouling (year)	2019
Window frame	aluminium
Window material	glass
Portholes	aluminium
Radar arch	non collapsible
Fuel tank (litre)	326
Fuel tank 2 (litre)	326
Level indicator (fuel tank)	yes
Fuel daytank (litre)	
Freshwater tank (litre)	272



SEALINE S37 SPORTS CRUISER

Level indicator (freshwater)	yes
Blackwater tank (litre)	113
Level indicator (blackwater)	yes
Blackwater tank extraction	113
Wheel steering	hydraulic
Outside helm position	hydraulic

ACCOMMODATION

Cabins	2
Berths	7
Floor	carpet
Open cockpit	yes
Saloon	yes
Headroom saloon (m)	1.90
Heating	diesel ducted hot air Eberspächer
Dinette	yes
Sliding door to cockpit	yes
Galley	yes
Countertop	Duropal
Sink	stainless steel
Cooker	calor gas Techimpex 3 burner
Oven	Smev
Extractor	yes
Gas alarm	Pilot
Microwave	Sharp
Fridge	yes
Freezer	In fridge
Hot water system	220V + engine
Water pressure system	electrical
Kettle	yes
Owners cabin	double bed



SEALINE S37 SPORTS CRUISER

Bed length (m)	2
Wardrobe	hanging/drawers/shelves
Bathroom	en suite
Toilet	en suite
Toilet system	manual
Wash basin	at the toilet
Shower	separate
Guest cabin 1	double bed
Bed length (m)	1.90
Wardrobe	hanging and drawers
Bathroom	shared
Toilet	shared
Toilet system	manual
Wash basin	in the cabin
Shower	shared
Wet bar	Fridge at cockpit

MACHINERY

No of engines	2
Make	Mercruiser
Type	D-tronic 4.2L
HP	250,00
kW	183,00
Fuel	diesel
Year installed	2006
Engine hours	1550
Engine cooling system	freshwater heat exchanger
Drive	stern
Engine controls	bowden cable
Gearbox	mechanical
Bowthruster	electric



SEALINE S37 SPORTS CRUISER

Propeller type	fixed
Manual bilge pump	yes
Electric bilge pump	yes
Start battery	yes
Service battery	yes
Bowthruster battery	yes
Battery monitor	yes
Battery charger	Newmar Phase Three
Shorepower	with cable

NAVIGATION

Compass	yes
Electric compass	Raymarine ST5000+
Depth sounder	Autohelm
Depth sounder/log	Autohelm
VHF	Koersniveau KRC-250
Autopilot	Raymarine ST5000+
Rudder angle indicator	yes
Plotter	Ratheon
Radar/GPS	Ratheon pathfinder
Navtex	Target
Navigation lights	yes

EQUIPMENT

Fixed windscreen	yes
Sprayhood	yes
Cockpit cover	yes
Cockpit cushions	yes
Cockpit table	yes
Cockpit chairs	yes
Bathing platform	yes



SEALINE S37 SPORTS CRUISER

Boarding ladder	stainless steel
Transom door	yes
Deck shower	yes
Anchor	
Anchor chain	yes
Windlass	electrical
Davits	stainless steel
Davits controls	manual
Sea railing	stainless steel
Grab rail (superstructure)	stainless steel
Window heating	yes
Horn	electric
Fenders	yes
Mooring lines	yes
TV	Akai
TV receiver	yes
Radio-cd player	Sony
DVD player	Built in TV
Cockpit speakers	Jensen
Speakers in salon	Sony
Clock - barometer	yes



SEALINE S37 SPORTS CRUISER



SEALINE S37 SPORTS CRUISER



SEALINE S37 SPORTS CRUISER



SEALINE S37 SPORTS CRUISER



SEALINE S37 SPORTS CRUISER



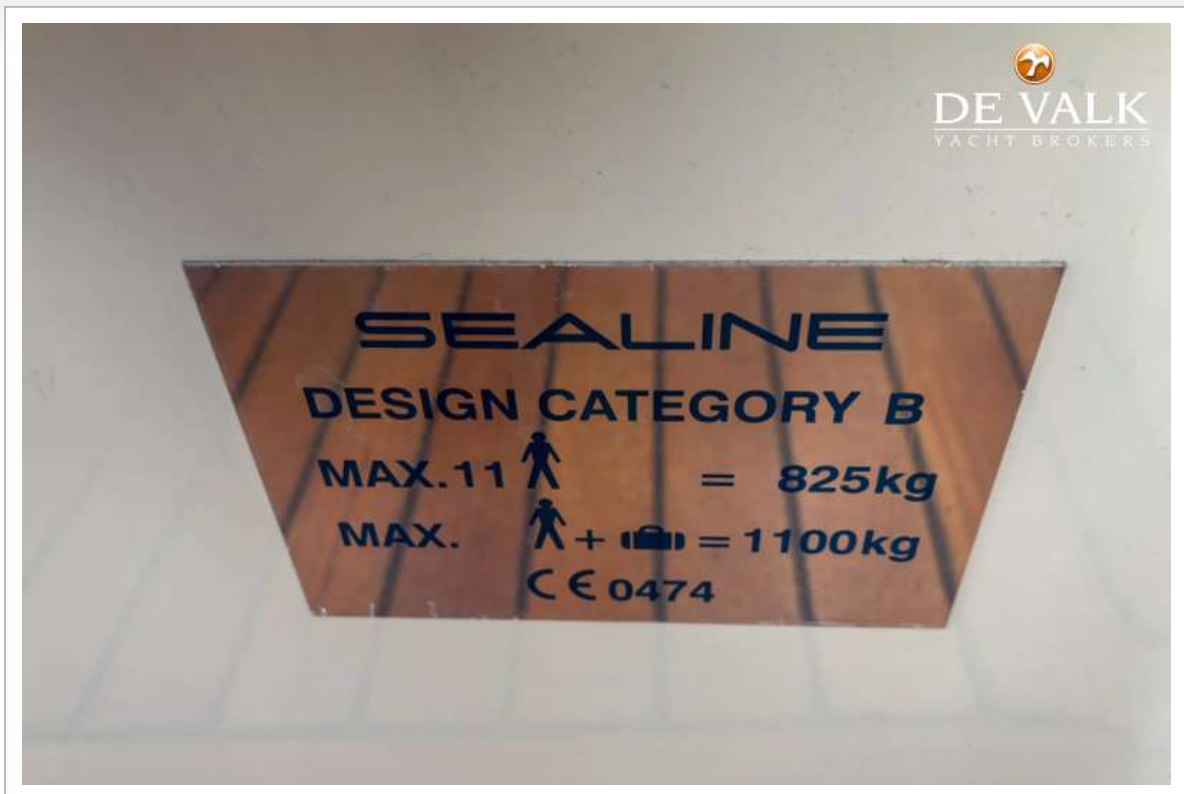
SEALINE S37 SPORTS CRUISER



SEALINE S37 SPORTS CRUISER



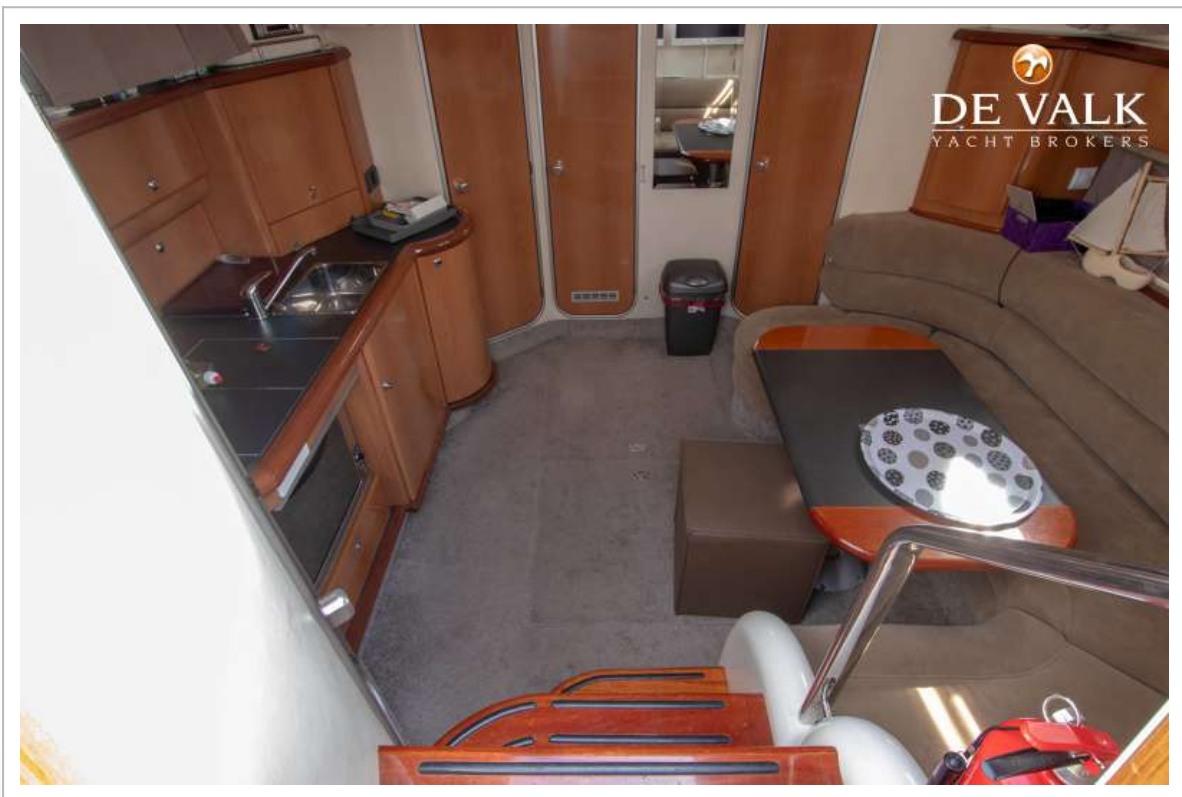
SEALINE S37 SPORTS CRUISER



SEALINE S37 SPORTS CRUISER



SEALINE S37 SPORTS CRUISER



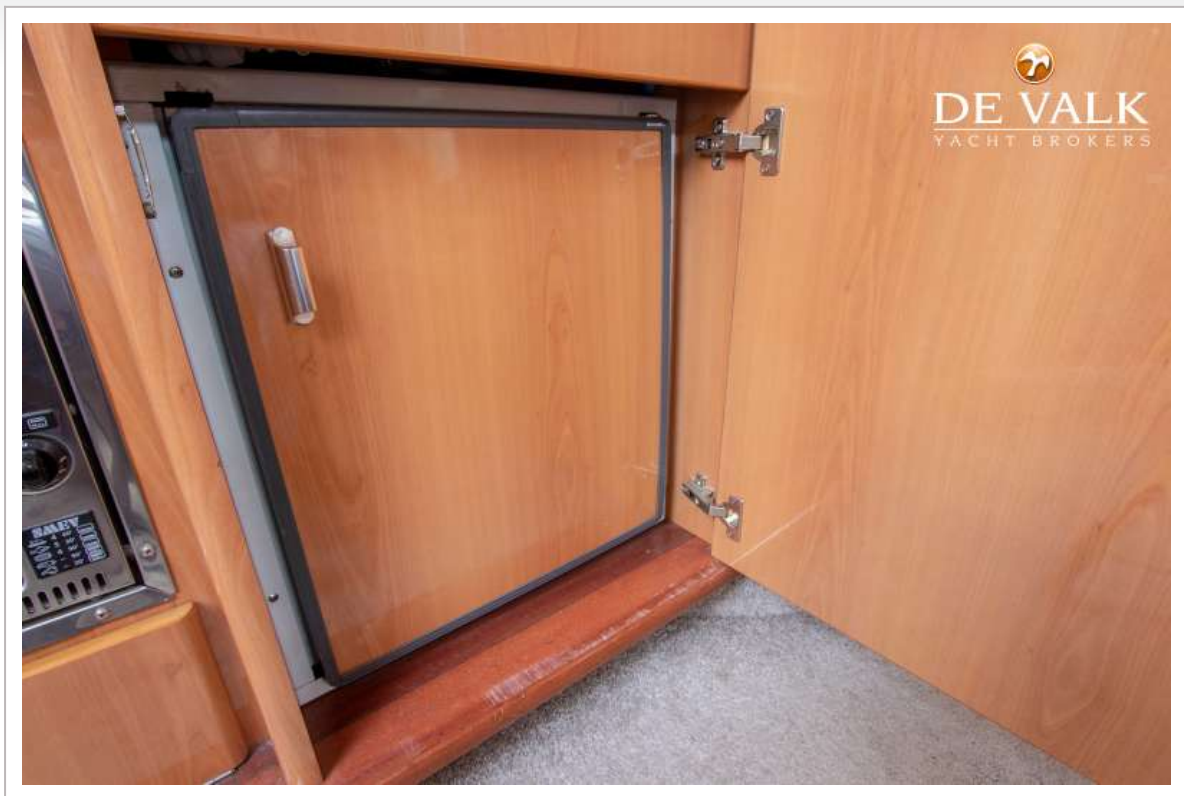
SEALINE S37 SPORTS CRUISER



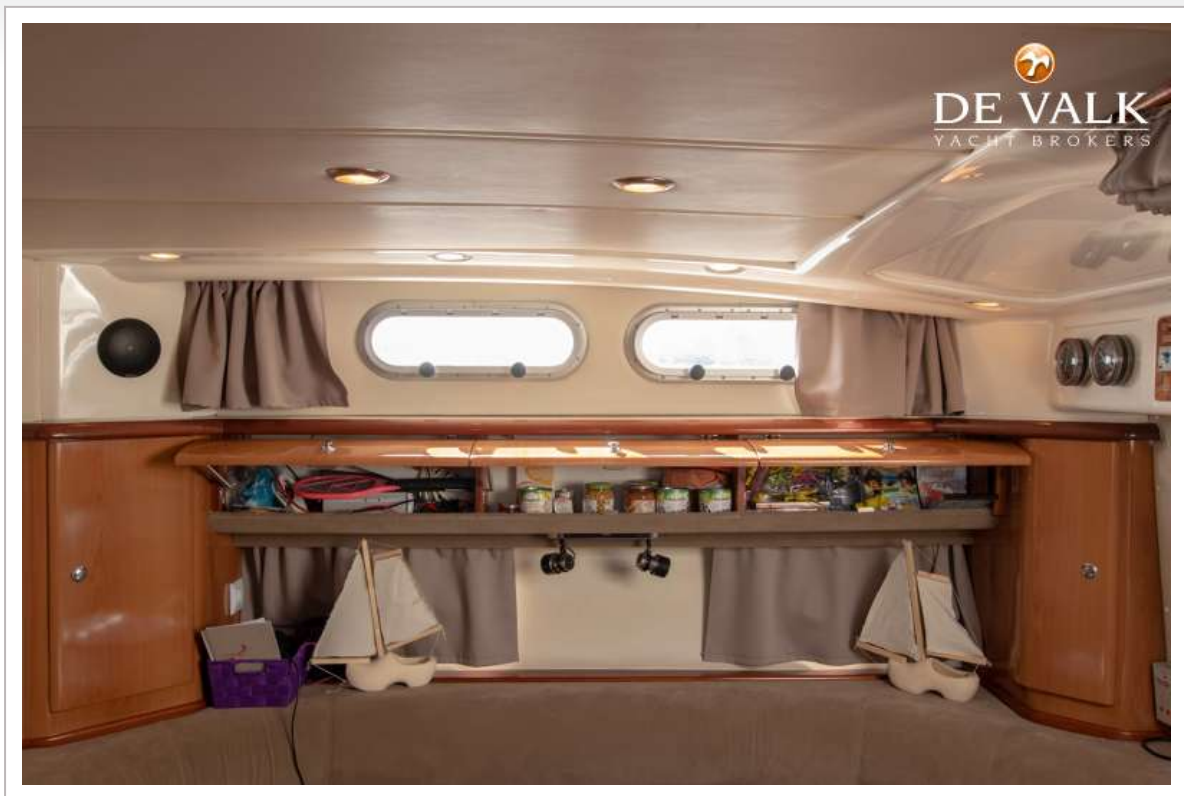
SEALINE S37 SPORTS CRUISER



SEALINE S37 SPORTS CRUISER



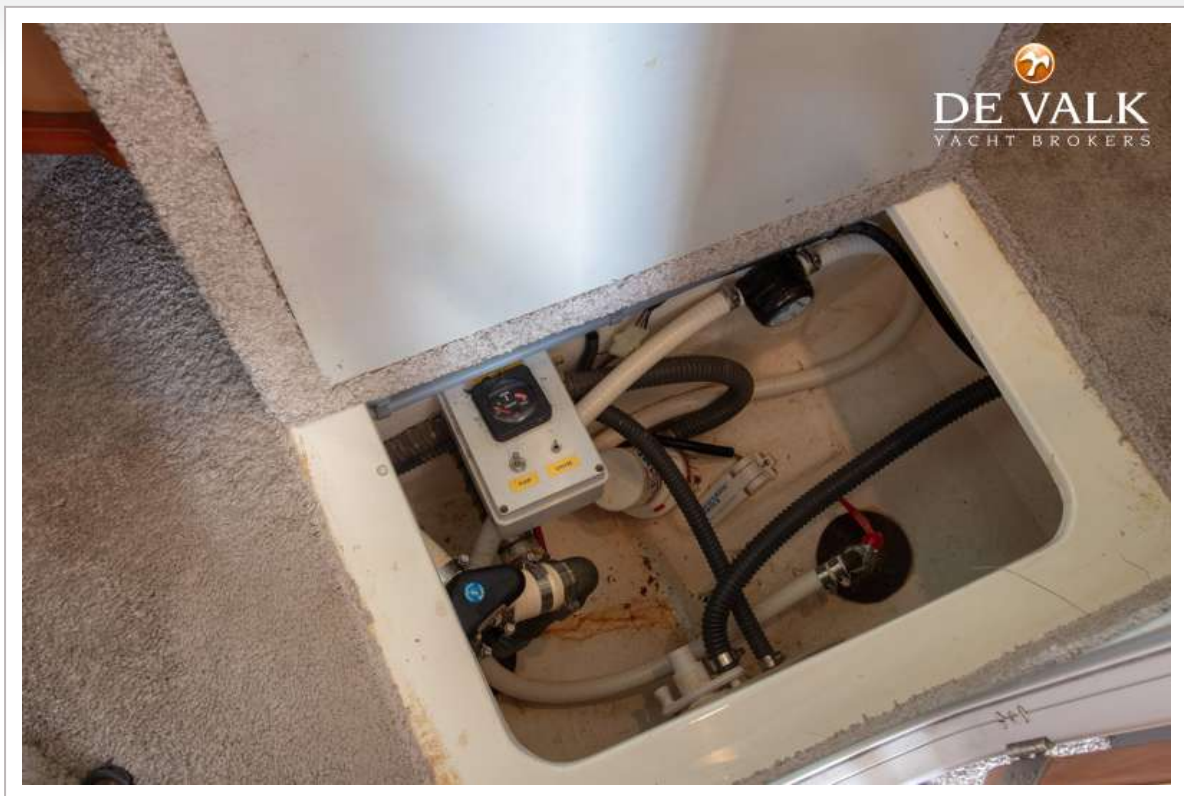
SEALINE S37 SPORTS CRUISER



SEALINE S37 SPORTS CRUISER



SEALINE S37 SPORTS CRUISER



SEALINE S37 SPORTS CRUISER



SEALINE S37 SPORTS CRUISER

