



## PERSHING 56

## BROKER'S COMMENTS

This 2007 Pershing 56 is in a sail-away condition. The antifouling and paintwork had been renewed in the winter of 2018/2019. She boasts a luxurious interior which sleeps 6 guests in three en-suite cabins - a spacious master stateroom amidships, a VIP cabin in her bow and an additional twin cabin for two guests. She will be auctioned on October 13 in cooperation with Schipveiling-BVA Auctions. For further details and viewing days go to:

<https://bit.ly/3gbk1ii> Opening price EUR. 100.000,- offers can be made from October 6th on the website of BVA Auctions. Survey report April 2020

*Arjen Hoeksma*

## SPECIFICATIONS

<b>Dimensions</b>	18.12 x 4.80 x 1.32 (m)	<b>Builder</b>	Ferretti Group
<b>Built</b>	2007	<b>Cabins</b>	3
<b>Material</b>	GRP	<b>Berths</b>	6
<b>Engine(s)</b>	2 x MAN D2842LE423Tier2 diesel	<b>Hp/Kw</b>	2 x 1,361.00 (hp), 1,000.00 (kw)
<b>Asking price</b>	sold (VAT )	<b>Lying</b>	at sales office

## CONTACT

<b>Sales office</b>	De Valk Loosdrecht B.V.	<b>Telephone</b>	+31 (0)35 582 90 30
<b>Address</b>	't Breukeleveense Meentje 6 1231LM Loosdrecht / Wijdmeren NL	<b>E-mail</b>	loosdrecht@devalk.nl

## DISCLAIMER

These particulars are given in good faith as supplied but cannot be guaranteed.



## GENERAL

Model	PERSHING 56
Type	motor yacht
LOA (m)	18,12
Beam (m)	4,80
Draft (m)	1,32
Headroom (m)	2,00
Year built	2007
Builder	Ferretti Group
Country	Italy
Displacement (t)	33,5
CE norm	NA
Hull material	GRP
Hull colour	white White / black
Hull shape	deep-V
Superstructure material	GRP
Rubbing strake	stainless steel
Deck material	GRP
Deck finish	teak
Superstructure deck finish	non-skid moulded in
Cockpit deck finish	teak
Antifouling (year)	Winter 2018 / 2019
Window material	polycarbonate
Portholes	stainless steel 4x
Radar arch	non collapsible
Fuel tank (litre)	epoxy 3200
Level indicator (fuel tank)	yes
Freshwater tank (litre)	epoxy 920
Level indicator (freshwater)	yes
Blackwater tank extraction	deck extraction + pump
Greywater tank (litre)	epoxy



Level indicator (greywater)	yes
Wheel steering	hydraulic
More info on paintwork	Winter 2018 / 2019

## ACCOMMODATION

Cabins	3
Berths	6
Crew cabin	yes
Crew berths	1
Interior	cherry
Floor	parquet
Open cockpit	yes
Saloon	yes
Headroom saloon (m)	2
Sliding roof	electric
Heating	central heating Vimar Topclimate
Air-conditioning	reverse cycle airco Dometic Condaria PCWM / FCL 9001 36.000 BTU
Sliding door to cockpit	yes
Galley	yes
Countertop	stainless steel
Sink	stainless steel
Cooker	electric Bosch
Extractor	yes
Microwave	Sharp
Fridge	Liebherr Comfort inside + Vitrifrigo outside
Freezer	Liebherr Comfort
Hot water system	220V or central heating
Water pressure system	
Dishwasher	Scholtes
Ice maker	yes



Coffee maker	yes
Owners cabin	double bed
Wardrobe	drawers
Bathroom	en suite
Toilet	en suite
Toilet system	electric
Wash basin	in the bathroom
Shower	en suite
Guest cabin 1	twin single
Wardrobe	drawers
Bathroom	separate
Toilet	separate
Toilet system	electric
Wash basin	in the bathroom
Shower	separate
Guest cabin 2	double bed
Wardrobe	drawers
Bathroom	en suite
Toilet	en suite
Toilet system	electric
Wash basin	in the bathroom
Shower	en suite
Crew cabin(s)	yes
Bathroom (crew)	yes

## MACHINERY

No of engines	2
Make	MAN
Type	D2842LE423Tier2
HP	1361
kW	1000,00



Fuel	diesel
Year installed	2006
Maximum speed (kn)	45
Cruising speed (kn)	30
Consumption (l/hr)	320
Engine hours	1375 / 1380
Engine cooling system	freshwater heat exchanger
Drive	surface drive
Engine controls	electrical
Gearbox	hydraulic ZF 665
Bowthruster	electric Side-power
Sternthruster	electric
Exhaust	watercooled
Propeller type	fixed
Propeller blades	5
Propeller shaft material	stainless steel
Shaft lubrication	water
Electric bilge pump	yes
Generator	dry exhaust Kohler 11 kVA
Running hours generator	2878
Batteries	yes
Battery monitor	yes
Battery charger/inverter	yes
Shorepower	with cable
Trimtabs	yes

## NAVIGATION

Compass	White Star
Depth sounder/log	Raymarine ST60+
VHF	Icom IC-M323G
Autopilot	Raymarine P70R



Rudder angle indicator	Raymarine ST60+
Plotter/GPS	Raymarine Aserie

## EQUIPMENT

Fixed windscreen	yes
Fixed hardtop	yes
Cockpit cover	yes
Cockpit cushions	yes
Cockpit table	yes
Cockpit chairs	yes
Bathing platform	yes
Boarding ladder	stainless steel
Transom door	yes
Gangway	Besenzoni hydraulic
Deck shower	yes
Anchor	
Anchor chain	80m
Windlass	electrical
Sea railing	stainless steel
Life raft	valise (or bag)
Wiper	yes
Horn	electric
Fenders	yes
Mooring lines	yes
TV	5x Samsung
TV receiver	yes
Radio-cd player	Sony Drive-SHX
DVD player	yes
Cockpit speakers	yes
Clock - barometer	Wempe
Extinguisher in engine room	yes



Auto extinguisher system

yes





# PERSHING 56



BROKERAGE | CHARTER | BERTHS | FINANCE | INSURANCE | YACHT MANAGEMENT



**DE VALK**  
YACHT BROKERS



**This yacht will be auctioned,  
for further details please visit [www.devalk.nl](http://www.devalk.nl)**

**Dit schip zal worden geveild,  
voor meer informatie gaat u naar [www.devalk.nl](http://www.devalk.nl)**

**Dieses Schiff wird versteigert,  
für weitere informationen besuchen Sie [www.devalk.nl](http://www.devalk.nl)**

[WWW.DEVALK.NL](http://WWW.DEVALK.NL)



**DE VALK**  
YACHT BROKERS



# PERSHING 56





# PERSHING 56



# PERSHING 56

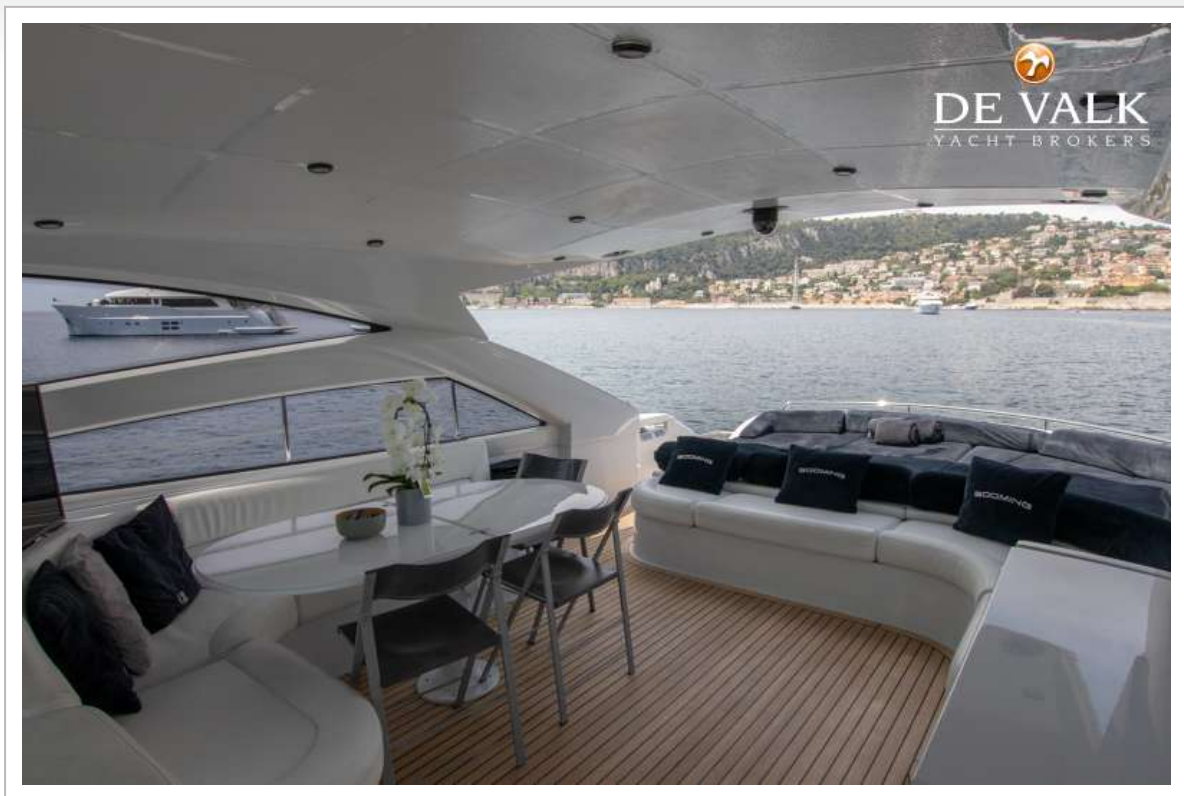




# PERSHING 56



# PERSHING 56





# PERSHING 56

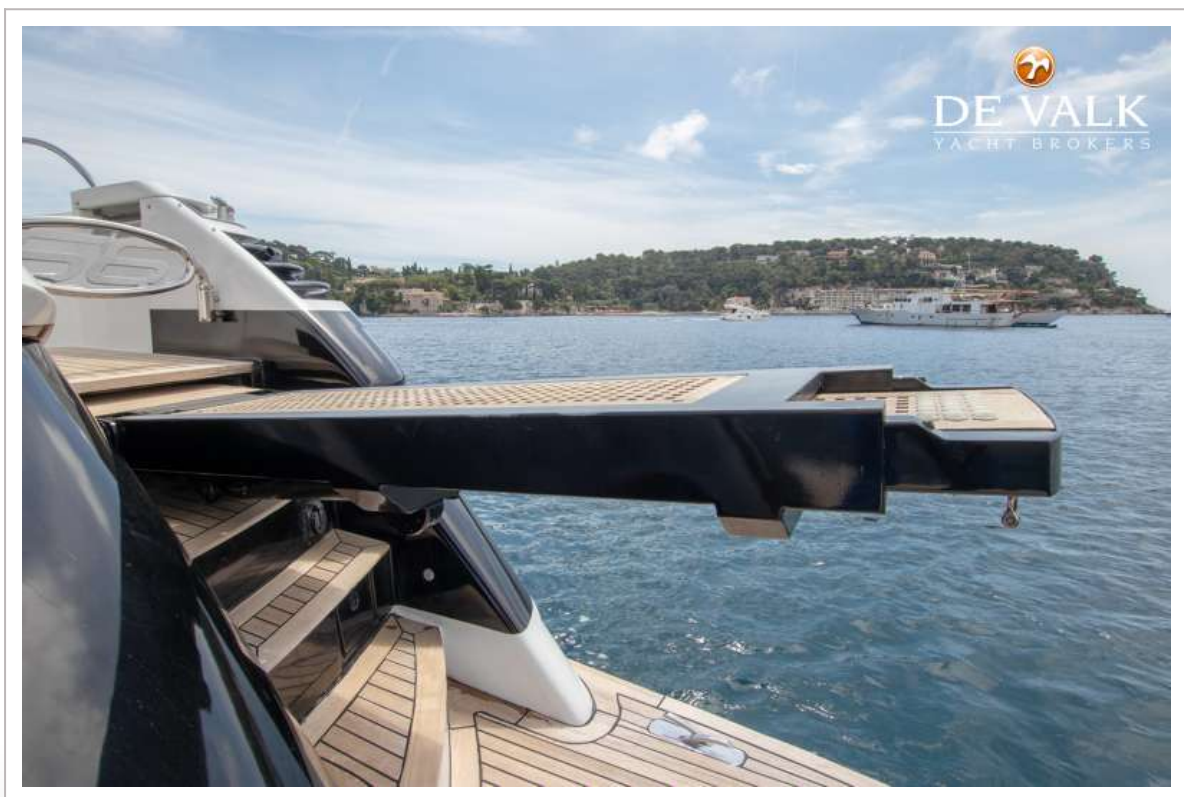


# PERSHING 56





# PERSHING 56



# PERSHING 56





# PERSHING 56



## PERSHING 56

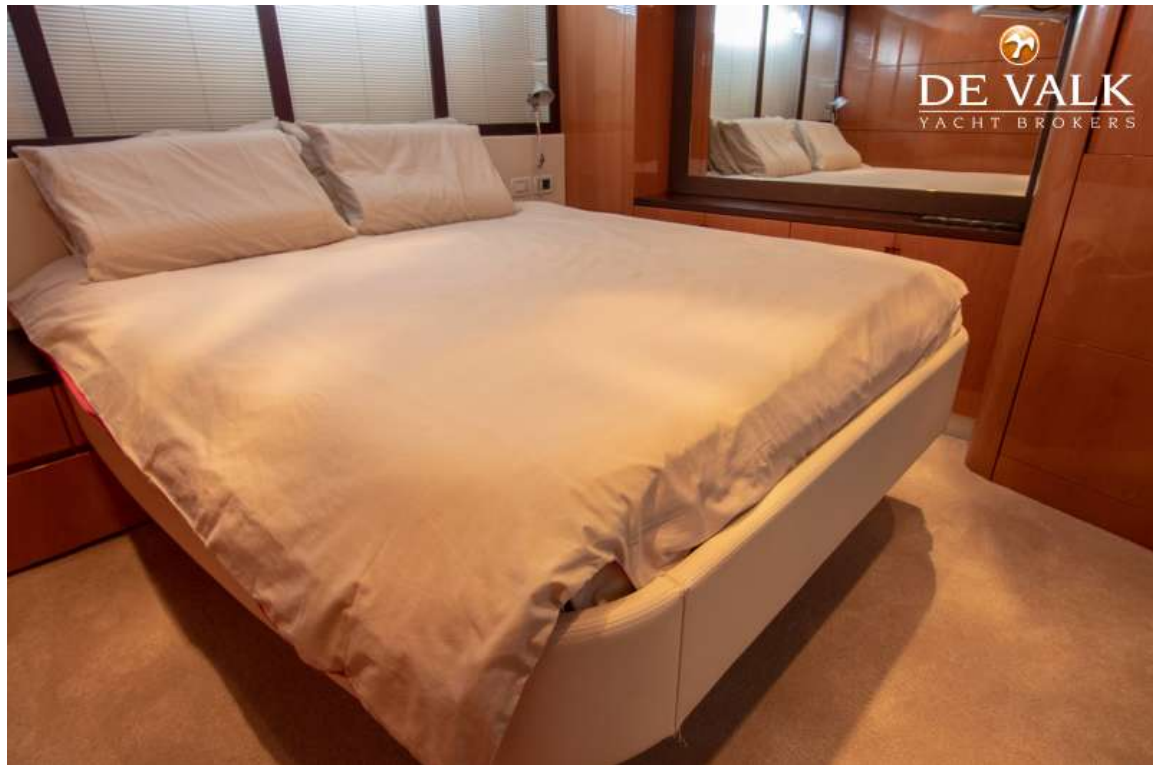


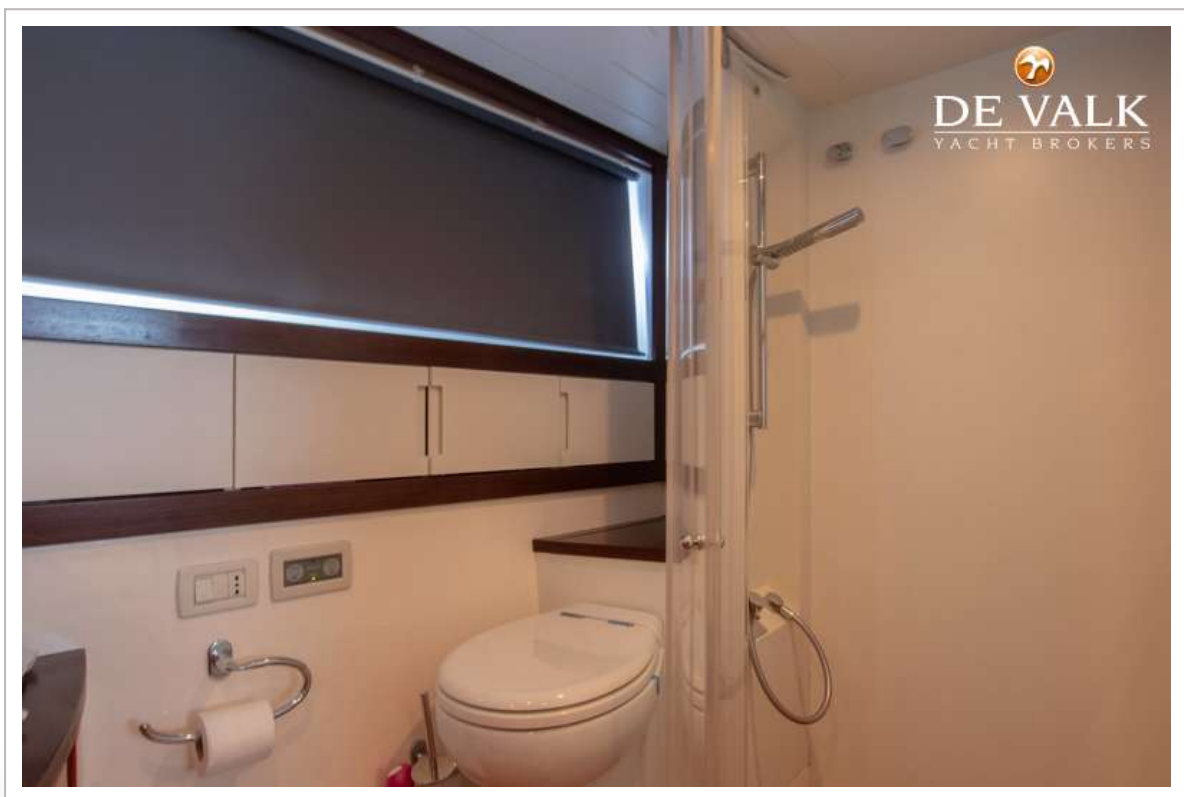
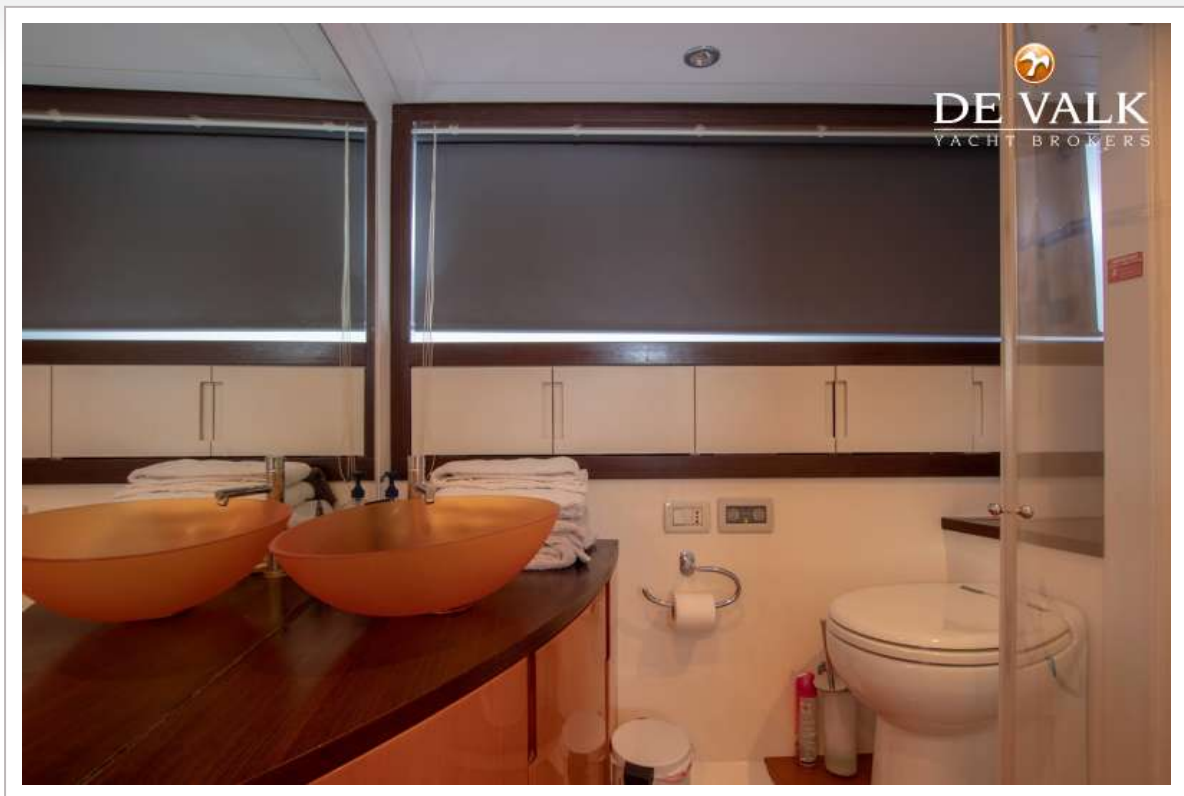
# PERSHING 56





## PERSHING 56



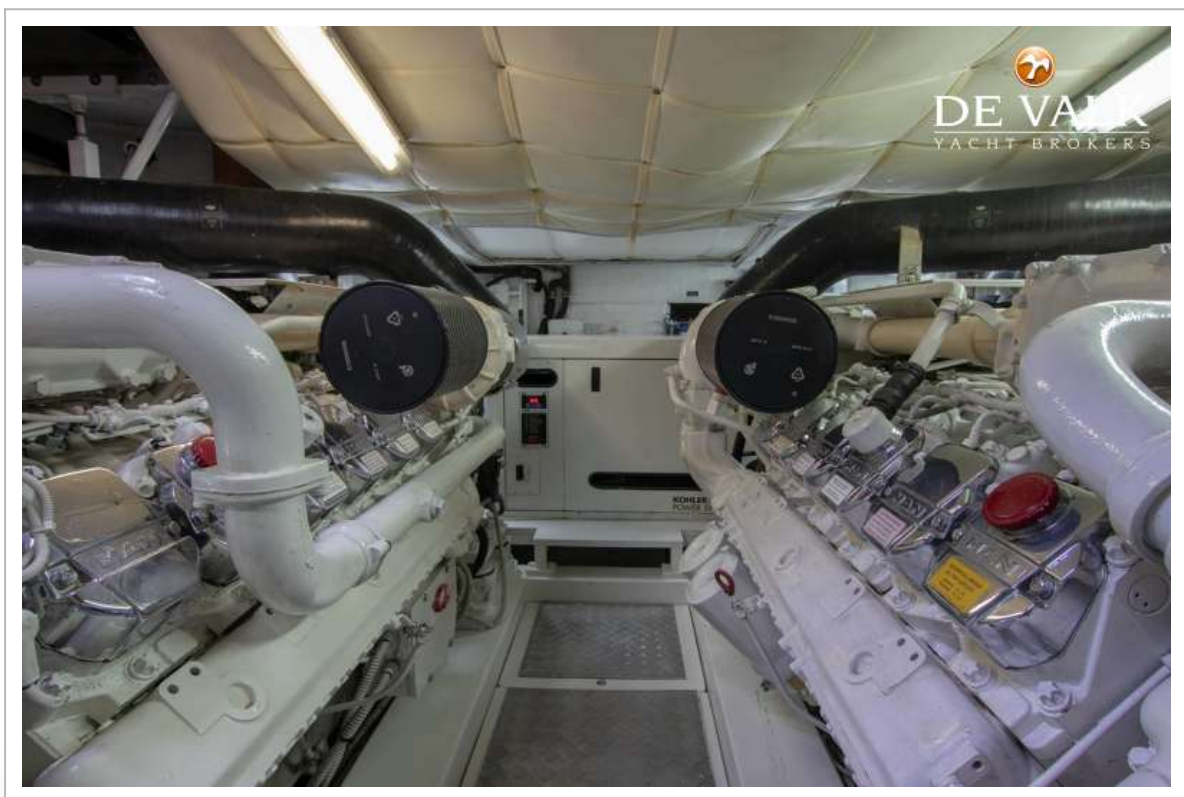


# PERSHING 56





# PERSHING 56



# PERSHING 56





# PERSHING 56

