



## LINSSEN 40 SE

# LINSSEN 40 SE

## BROKER'S COMMENTS

The Linssen 40 SE "My Way" is a quality yacht built by Linssen Yachts in 1992. This Linssen 40 SE is spacious and has two cabins and a convertible dinette. As a result, this Linssen can sleep up to 6 people. The bow thruster makes this Linssen easy to manoeuvre. The Linssen is sold including a dinghy and a complete winter cover.

*Tom Reith*

## SPECIFICATIONS

<b>Dimensions</b>	12.35 x 4.00 x 1.25 (m)	<b>Builder</b>	Linssen Yachts
<b>Built</b>	1992	<b>Cabins</b>	2
<b>Material</b>	Steel	<b>Berths</b>	6
<b>Engine(s)</b>	1 x Volvo Penta TAMD 41 B 86 diesel	<b>Hp/Kw</b>	200.00 (hp), 147.00 (kw)
<b>Asking price</b>	sold (VAT )	<b>Lying</b>	at sales office

## CONTACT

<b>Sales office</b>	De Valk Loosdrecht B.V.	<b>Telephone</b>	+31 (0)35 582 90 30
<b>Address</b>	't Breukeleveense Meentje 6 1231LM Loosdrecht / Wijdmeren NL	<b>E-mail</b>	loosdrecht@devalk.nl

## DISCLAIMER

These particulars are given in good faith as supplied but cannot be guaranteed.



## GENERAL

Model	LINSSEN 40 SE
Type	motor yacht
LOA (m)	12,35
Beam (m)	4,00
Draft (m)	1,25
Headroom (m)	2,00
Year built	1992
Builder	Linssen Yachts
Country	The Netherlands
Hull material	steel
Hull colour	blue
Hull shape	hard chine
Superstructure material	steel
Rubbing strake	rubber
Deck material	steel
Deck finish	teak
Superstructure deck finish	non-skid paint
Deckhatch	yes
Portholes	yes
Radar arch	collapsible
Fuel tank (litre)	2 x 550L
Level indicator (fuel tank)	yes
Freshwater tank (litre)	2 x 250L
Level indicator (freshwater)	yes
Blackwater tank (litre)	yes
Level indicator (blackwater)	yes
Blackwater tank extraction	deck extraction + pump
Wheel steering	hydraulic
Inside helm position	yes
Outside helm position	yes



## ACCOMMODATION

Cabins	2
Berths	6
Floor	carpet
Headroom saloon (m)	2
Heating	diesel ducted hot air Eberspächer D 5 L
Dinette	yes
Dinette to convert into berth	yes
Opening door to aft deck	yes
Galley	yes
Countertop	yes
Sink	yes
Cooker	calor gas 3 burner
Gas alarm	Vetus Gas Detector
Fridge	yes
Hot water system	220V + engine Rheinstrom 50 Ltr.
Water pressure system	electrical
Owners cabin	double bed
Wardrobe	hanging and shelves
Bathroom	yes
Toilet	yes
Toilet system	manual
Wash basin	in the bathroom
Shower	
Guest cabin 1	v-bed
Wardrobe	hanging and shelves
Toilet	en suite
Toilet system	manual Jabsco
Wash basin	at the toilet

## MACHINERY



# LINSSEN 40 SE

No of engines	1
Make	Volvo Penta
Type	TAMD 41 B 86
HP	200
kW	147,00
Fuel	diesel
Engine hours	4730
Engine cooling system	freshwater heat exchanger
Drive	shaft
Engine controls	bowden cable
Engine controls	bowden cable
Bowthruster	electric
Exhaust	watercooled
Propeller type	fixed
Shaft lubrication	water
Manual bilge pump	yes
Electric bilge pump	yes
Electrical installation	12/220V
Start battery	110 Ah
Service battery	3x 225 Ah
Bowthruster battery	110 Ah
Battery monitor	BM-2
Battery charger/inverter	Victron MultiPlus Compact
Shorepower	with cable

## NAVIGATION

Depth sounder/log	Autohelm TRIDATA
VHF	Shipmate RS8110
Autopilot	Raymarine
Plotter/GPS	Raymarine Axiom
Navigation lights	yes



## EQUIPMENT

Sprayhood	yes
Winter cover	yes
Window cover	yes
Bathing platform	yes
Boarding ladder	stainless steel
Anchor	yes
Anchor chain	yes
Windlass	manual
Deck wash	yes
Dinghy	inflatable Honwave MS-270
Davits	stainless steel Allpa
Davits controls	manual
Sea railing	stainless steel
Railing side opening gates	yes
Wiper	yes
Horn	electric
Fenders	yes
Mooring lines	yes
Spare parts	yes
Radio	yes
Speakers in salon	yes
Clock - barometer	yes



# LINSSEN 40 SE



# LINSSEN 40 SE

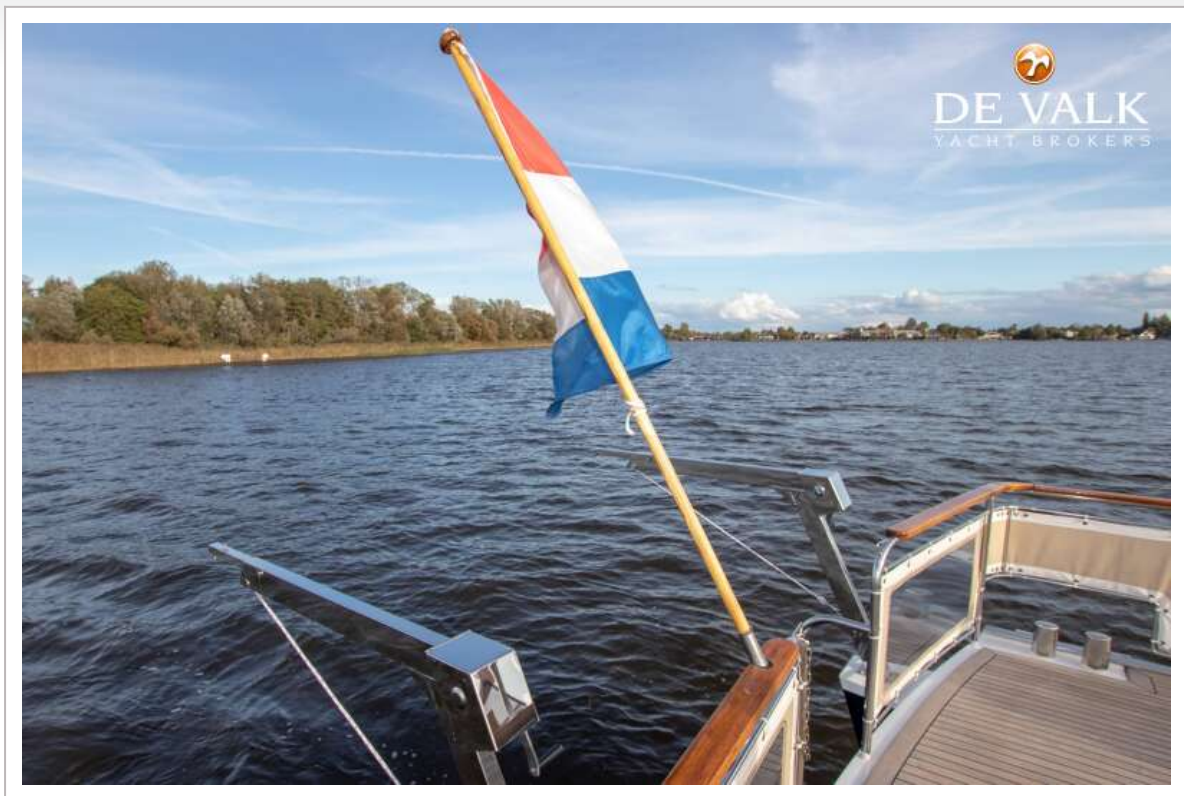


# LINSSEN 40 SE

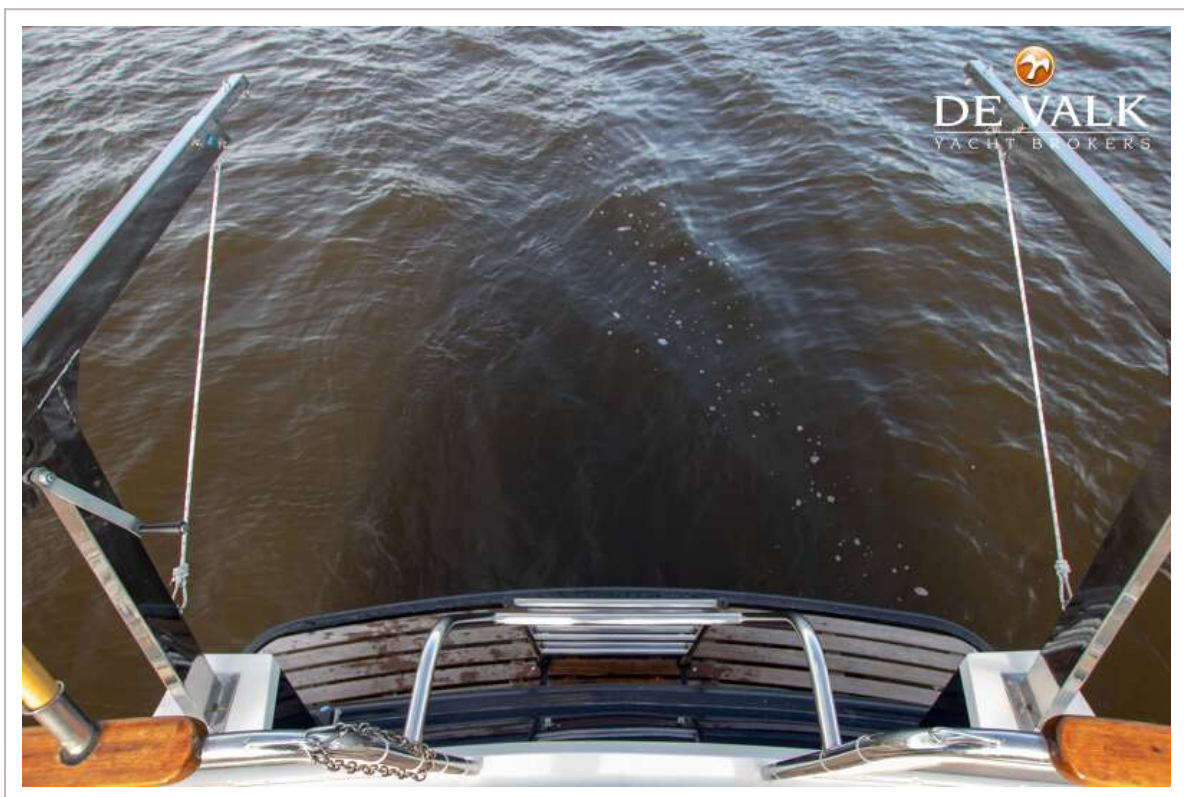


# LINSSEN 40 SE





# LINSSEN 40 SE



# LINSSEN 40 SE



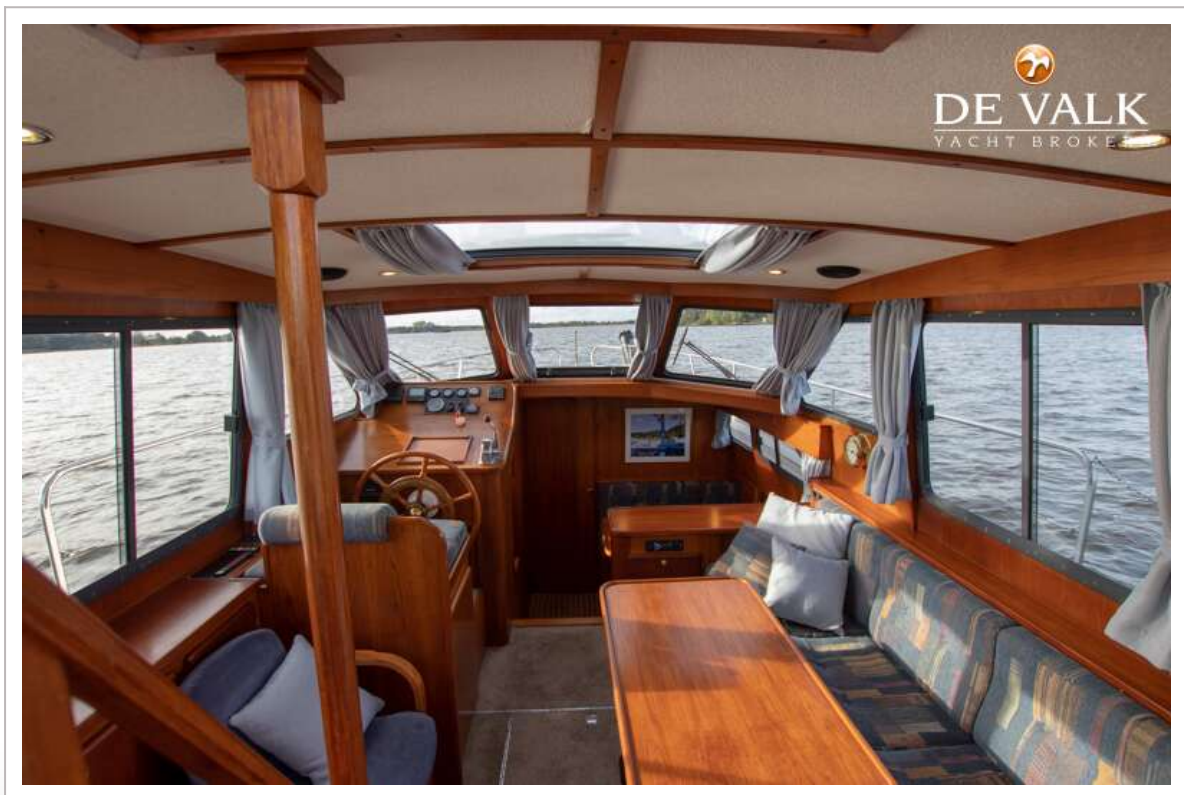
# LINSSEN 40 SE



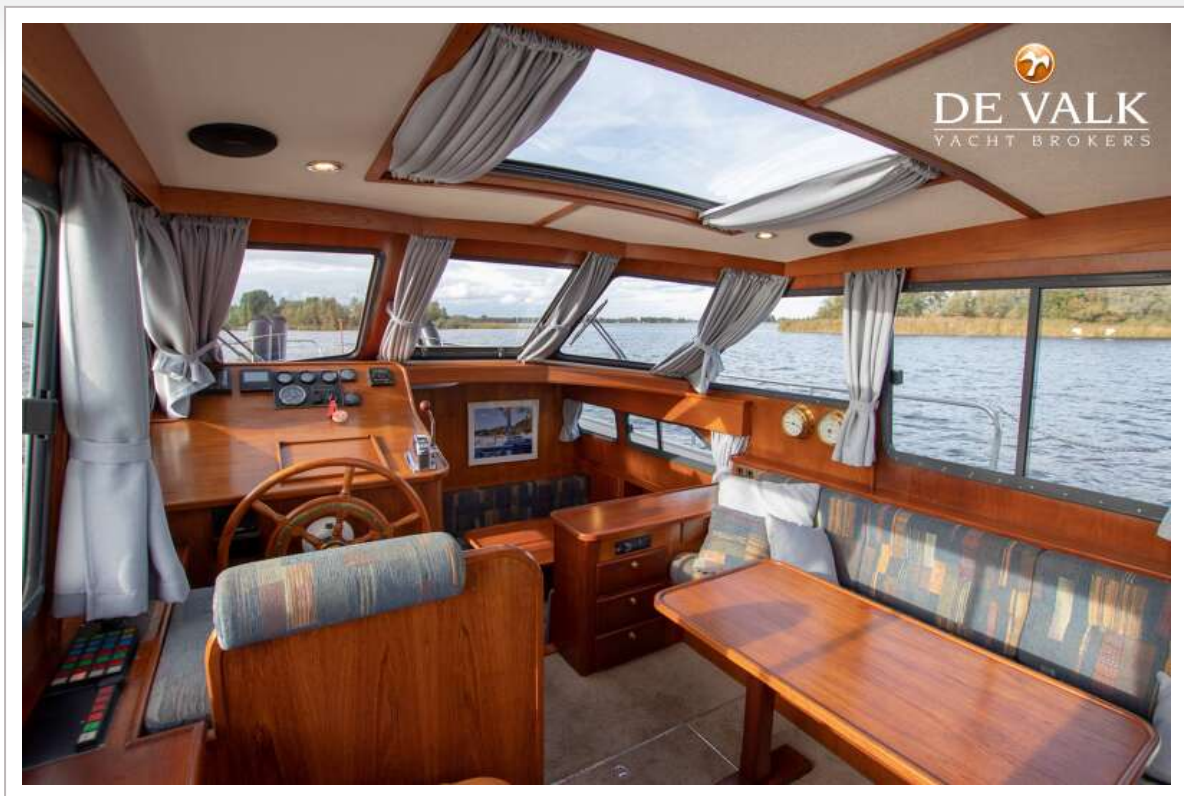
# LINSSEN 40 SE



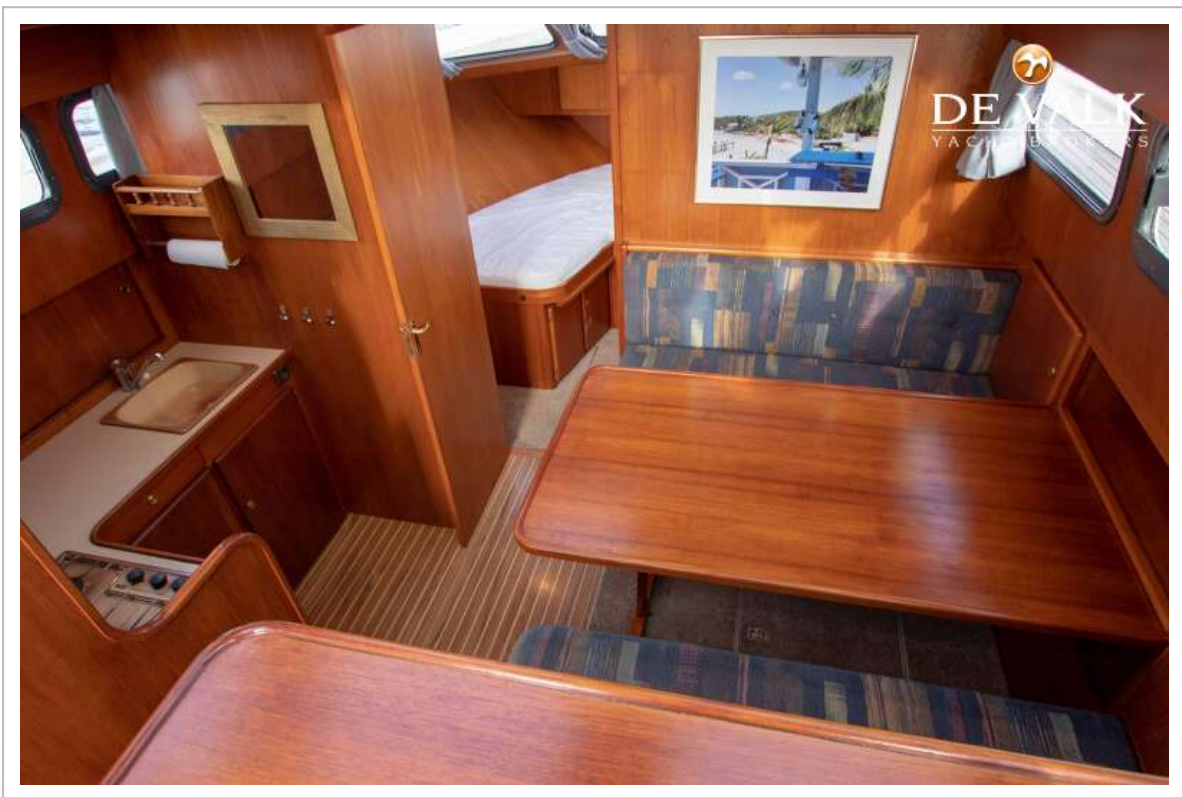
# LINSSEN 40 SE



# LINSSEN 40 SE



# LINSSEN 40 SE



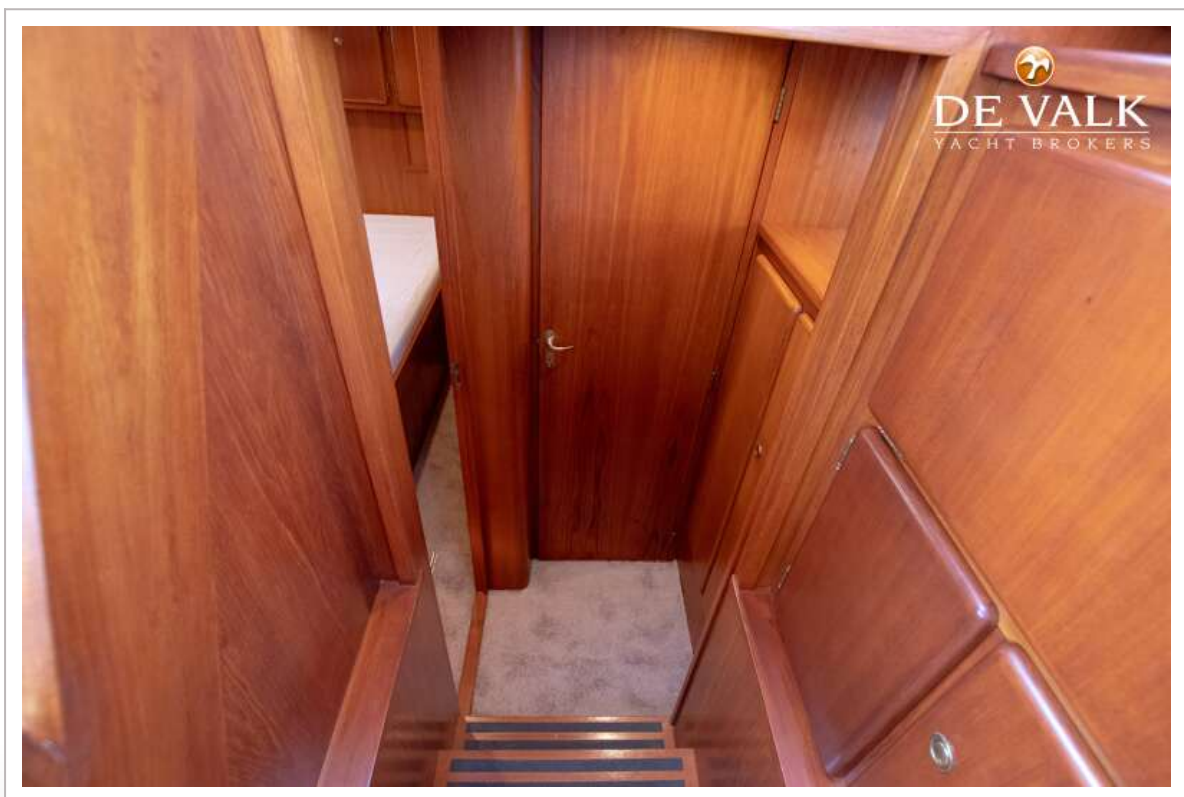
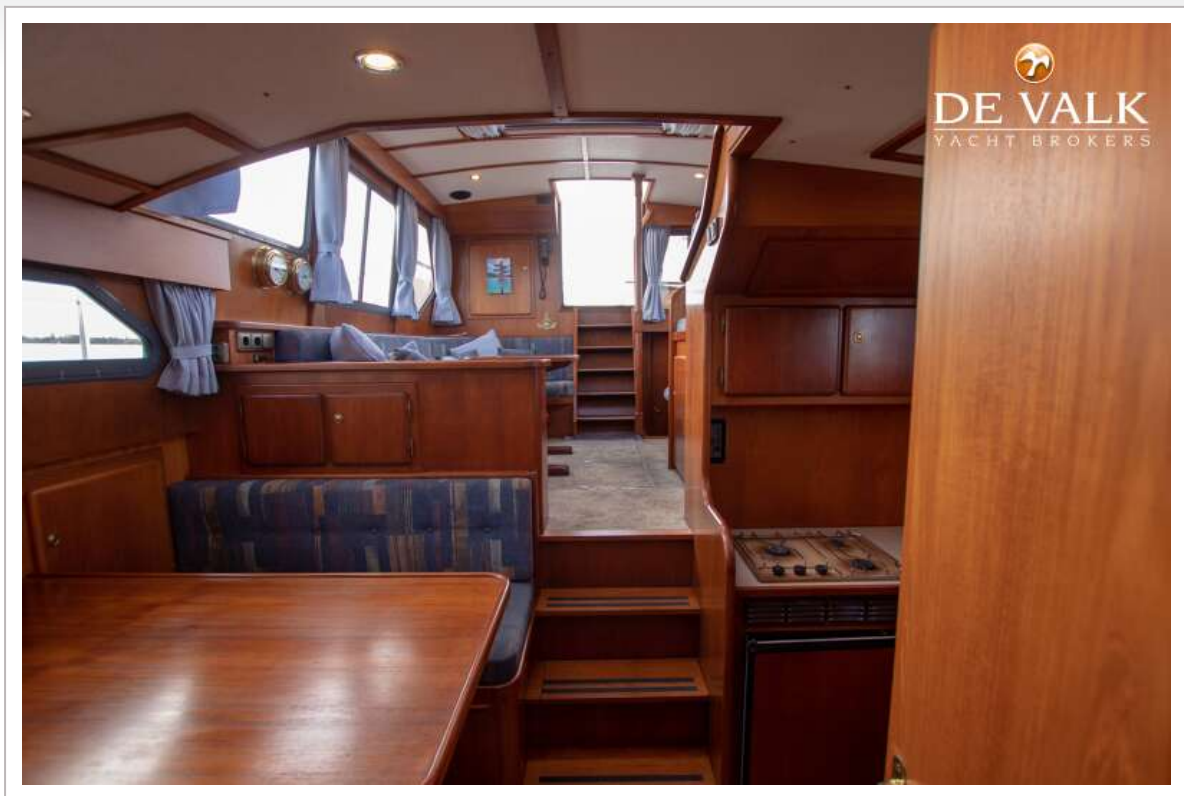
# LINSSEN 40 SE



# LINSSEN 40 SE



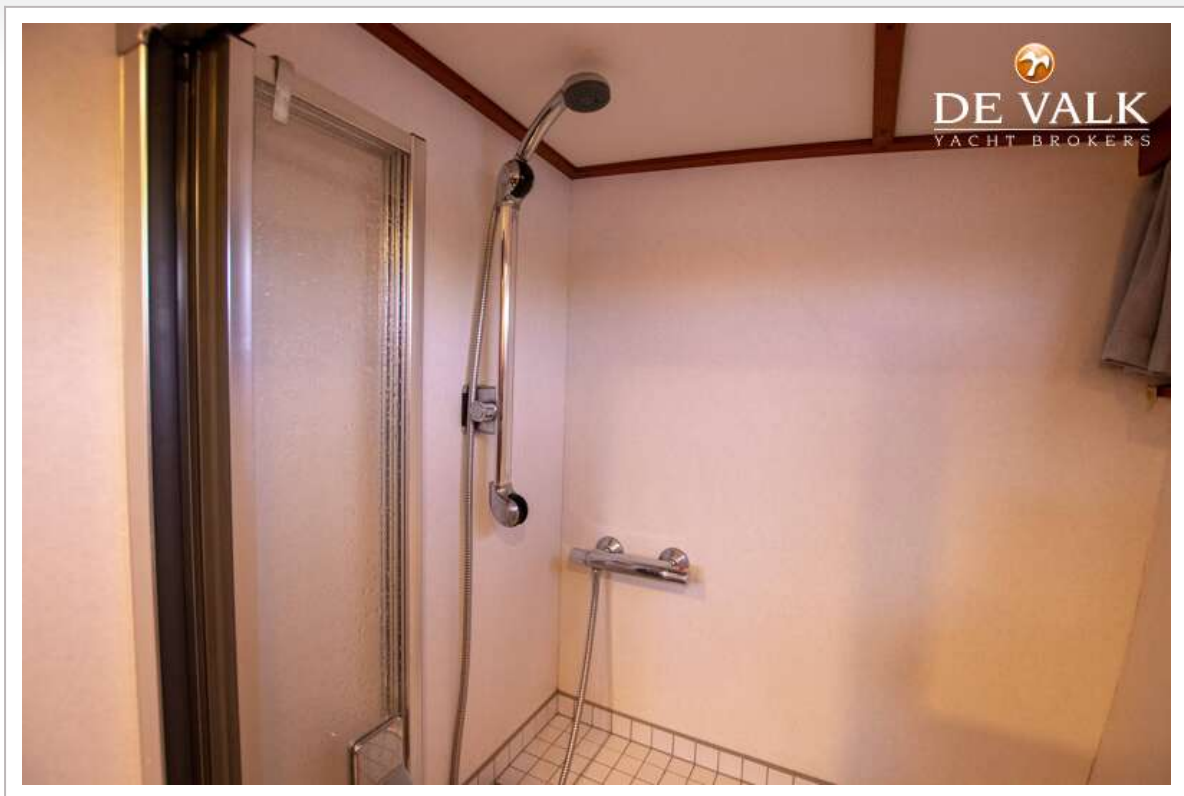
# LINSSEN 40 SE



# LINSSEN 40 SE







# LINSSEN 40 SE

