



DE VALK
YACHT BROKERS



HEESEN 90



DE VALK
YACHT BROKERS

BROKER'S COMMENTS

Heesen 90 "L'Ami" build at the famous Heesen Shipyard in 1979. Aluminium hull and superstructure, double MAN diesel engines. Extended in 1984, rebuild of the Stern in 1989 and complete new paintwork from 2020. Furthermore she is CVO certified for sailing in the inside waterways of Europe (excluding Rine). A real family yacht or suitable for charter due her 7 cabin layout. Constandly well maintained motoryacht.

Arne Doodeman

SPECIFICATIONS

| | | | |
|---------------------|---------------------------|----------------|---------------------------------|
| Dimensions | 27.72 x 5.64 x 1.85 (m) | Builder | Heesen Shipyard B.V. |
| Built | 1979 | Cabins | 7 |
| Material | Aluminium | Berths | 14 |
| Engine(s) | 2 x MAN D2842LE401 diesel | Hp/Kw | 2 x 1,000.00 (hp), 735.00 (kw) |
| Asking price | sold (VAT) | Lying | elsewhere / Not at sales office |

CONTACT

| | | | |
|---------------------|--------------------------------------|------------------|---------------------|
| Sales office | De Valk Sneek | Telephone | +31 (0)515 42 80 30 |
| Address | Zwolsmanweg 7 8606 KC Sneek NL | E-mail | sneek@devalk.nl |

DISCLAIMER

These particulars are given in good faith as supplied but cannot be guaranteed.



GENERAL

| | |
|----------------------------|---|
| Model | HEESEN 90 |
| Type | motor yacht |
| LOA (m) | 27,72 |
| Beam (m) | 5,64 |
| Draft (m) | 1,85 |
| Air draft (m) | 13,55 |
| Air draft min (m) | 6,50 |
| Year built | 1979 |
| Builder | Heesen Shipyard B.V. |
| Country | The Netherlands |
| Designer | Pieter Beeldsnijder |
| Displacement (t) | 79,8 |
| CE norm | NA |
| Hull material | aluminium |
| Hull colour | blue |
| Hull thickness (mm) | Forward section 8 mm and 20mm below the engineroom till stern |
| Superstructure material | aluminium |
| Rubbing strake | rubber |
| Deck material | aluminium |
| Deck finish | teak |
| Superstructure deck finish | paint |
| Cockpit deck finish | teak |
| Antifouling (year) | 2020 |
| Window frame | aluminium Wigo |
| Window material | glass 12mm safety glass |
| Portholes | Wigo |
| Insulation | rockwool |
| Flybridge | yes |
| Radar arch | collapsible |
| Fuel tank (litre) | 12000 ltr |



| | |
|-------------------------|--|
| Fuel daytank (litre) | 800 |
| Freshwater tank (litre) | 4500 ltr (3x 1500Ltr) |
| Greywater tank (litre) | yes |
| Wheel steering | hydraulic |
| Inside helm position | yes |
| Flybridge helm position | yes |
| More info on hull | Extended in 1984 at the Heesen shipyard |
| More info on paintwork | Superstructure paintwork 2020 2 comp De IJssel |
| Extra info | Stern refit 1998 |
| Extra info | Electric trimpumps for the water and dieseltanks |
| Extra info | 5 watertight compartments |

ACCOMMODATION

| | |
|--------------------------|-----------------------------------|
| Cabins | 7 |
| Berths | 14 |
| Interior | teak |
| Aft deck | yes |
| Saloon | yes |
| Heating | central heating Webasto |
| Air-conditioning | In the wheelhouse (needs service) |
| Dinette | yes |
| Sliding door to aft deck | yes |
| Galley | yes |
| Countertop | yes |
| Sink | stainless steel |
| Cooker | ceramic AEG 4 burner |
| Extractor | yes |
| Fridge | yes |
| Hot water system | 75 Ltr via port generator or 220V |
| Water pressure system | electrical |
| Dishwasher | Morris |



| | |
|-----------------|--|
| Coffee maker | yes |
| Owners cabin | French bed Full beam owners cabin in aftship |
| Wardrobe | hanging/drawers/shelves |
| Bathroom | en suite |
| Toilet | |
| Toilet system | electric |
| Wash basin | |
| Shower | |
| Guest cabin 1 | double bed 2 cabins with double berth |
| Wardrobe | yes |
| Toilet | separate |
| Toilet system | electric |
| Wash basin | at the toilet |
| Shower | separate |
| Guest cabin 2 | 2 cabins wiht two single berhts |
| Wardrobe | yes |
| Toilet | separate |
| Toilet system | electric |
| Wash basin | at the toilet |
| Shower | separate |
| Guest cabin 3 | One cabin with bunk berth |
| Wardrobe | yes |
| Guest cabin 4 | One single cabin (original 2 x single) |
| Washing machine | Miele |
| Dryer | Miele |
| Extra info | Frying pan |

MACHINERY

| | |
|---------------|------------|
| No of engines | 2 |
| Make | MAN |
| Type | D2842LE401 |



| | |
|--------------------------|---|
| HP | 1000 |
| kW | 735,00 |
| Fuel | diesel |
| Year installed | 1997 |
| Maximum speed (kn) | 22 @ 2400rpm |
| Cruising speed (kn) | 20 |
| Engine hours | 3450 |
| Engine cooling system | freshwater heat exchanger |
| Drive | shaft |
| Engine controls | pneumatic Rexroth |
| Gearbox | hydraulic ZF BW165A |
| Bowthruster | hydraulic Hydromat 65HP |
| Exhaust | watercooled |
| Thrust bearing | Centa flexible coupling |
| Propeller type | fixed |
| Propeller blades | 4 bladed |
| Propeller shaft material | stainless steel |
| Shaft lubrication | water |
| Electric bilge pump | yes |
| Bilge alarm | yes |
| Generator | 22 Kva Mitsubishi diesel S4-E2 with stamford alternator |
| Generator 2 | 18 Kva Mitsubishi S4-E2 diesel with stamford alternator |
| Batteries | 2 x 230ah for navigation equipment |
| Start battery | 4 x Optima red top |
| Service battery | 10 x Varta 196 ah |
| Generator battery | 2 x Optima red top |
| Battery monitor | Victron multi control |
| Battery charger/inverter | 2 x Victron Multi plus 24/3000/70 |
| Shorepower | with cable |
| Stabilizers | Vosper Thorneycroft stabilizers (via trimtabs) with Navio 301 |
| Extra info | Ventilation engineroom regulated forced intake fan |
| Extra info | 120a alternator on the main engine |



NAVIGATION

| | |
|------------------------|--|
| Depth sounder | VDO Logic |
| Log | VDO Logic |
| Windset | VDO Logic |
| Repeater | VDO Logic multi |
| VHF | 2 x B&G V50 |
| Autopilot | VDO logic pilot |
| Rudder angle indicator | VDO |
| Radar | Decca bridge master CB 251/4 |
| GPS | MRL FX312XC |
| Plotter/GPS | 2 x Yachtcontrol screen with Navigation software |
| PC connection | At the Yachtcontrol screens |
| AIS receiver | True Heading Carbon Pro |
| AIS transponder | True Heading Carbon Pro |
| Radio receiver | Skanti TRP 7000 MF/HF transceiver |
| Navigation lights | yes |
| Searchlight | yes |
| Loudhailer | yes |

EQUIPMENT

| | |
|------------------|---------------------------------|
| Cockpit table | yes |
| Cockpit chairs | yes |
| Bathing platform | yes |
| Boarding ladder | yes |
| Transom door | yes |
| Gangway | Manual wooden gangway |
| Anchor | 80KG |
| Anchor chain | 200m shortlink galvanized chain |
| Anchor 2 | 80KG |
| Anchor chain | 200m shortlink galvanized chain |
| Windlass | electrical |



| | |
|-----------------------------|----------------------------------|
| Capstan | On the windlass |
| Deck wash | yes |
| Dinghy | rigid inflatable AB |
| Outboard | 50HP Mercury |
| Deck crane | electric Hydromat Seahorse 450KG |
| Sea railing | yes |
| Grab rail (superstructure) | yes |
| Railing side opening gates | yes |
| Life raft | container 2 x Autoflug |
| Life raft (pers) | 8 pers |
| Last life raft survey | Both life rafts need service |
| Wiper | 3 wipers with screenwash |
| Clearview window | 2x (BB en SB in the wheelhouse |
| Horn | yes |
| Fenders | yes |
| Mooring lines | yes |
| TV | Philips |
| TV receiver | Glomex |
| Radio-cd player | Kenwood |
| Fire extinguisher | yes |
| Extinguisher in engine room | yes |















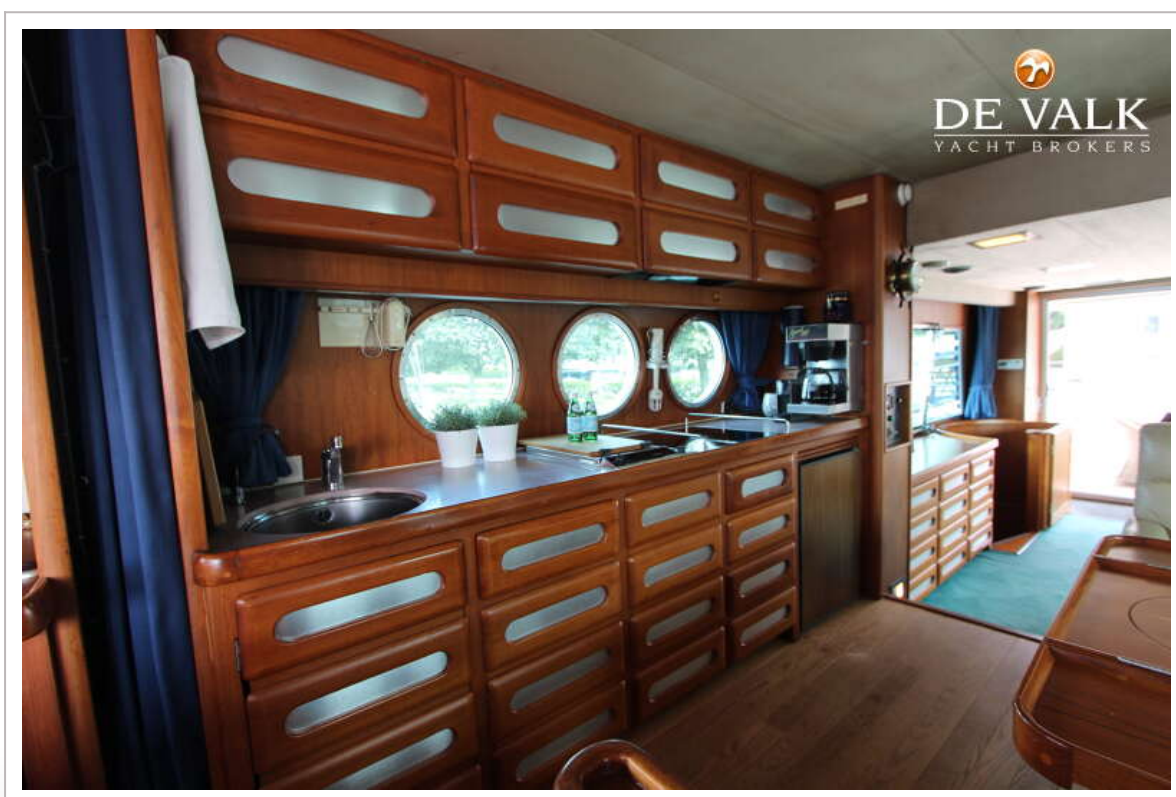


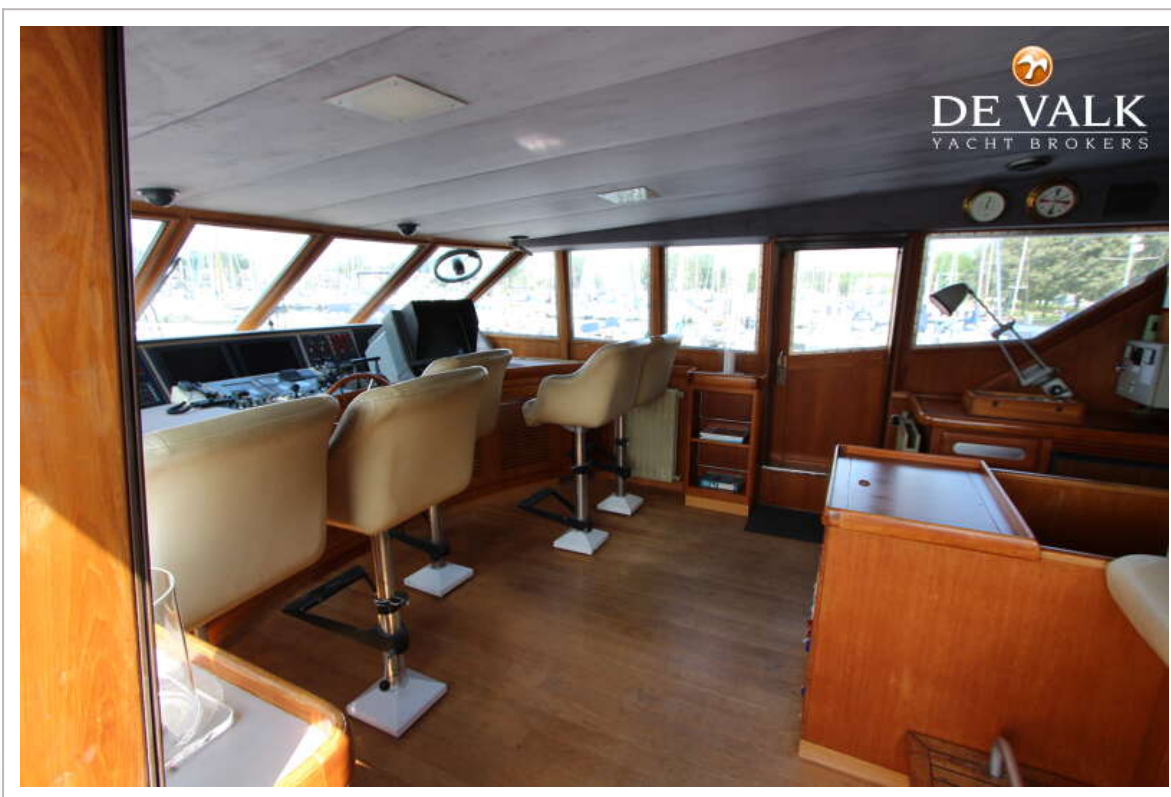
HEESEN 90

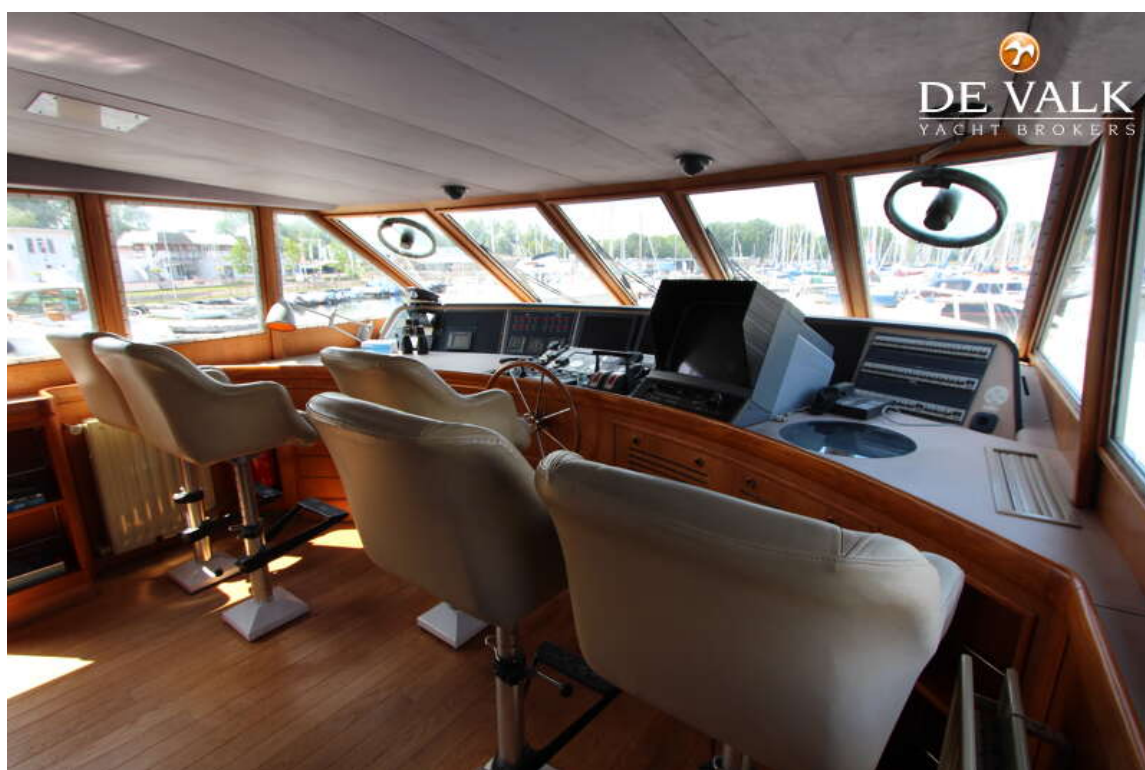


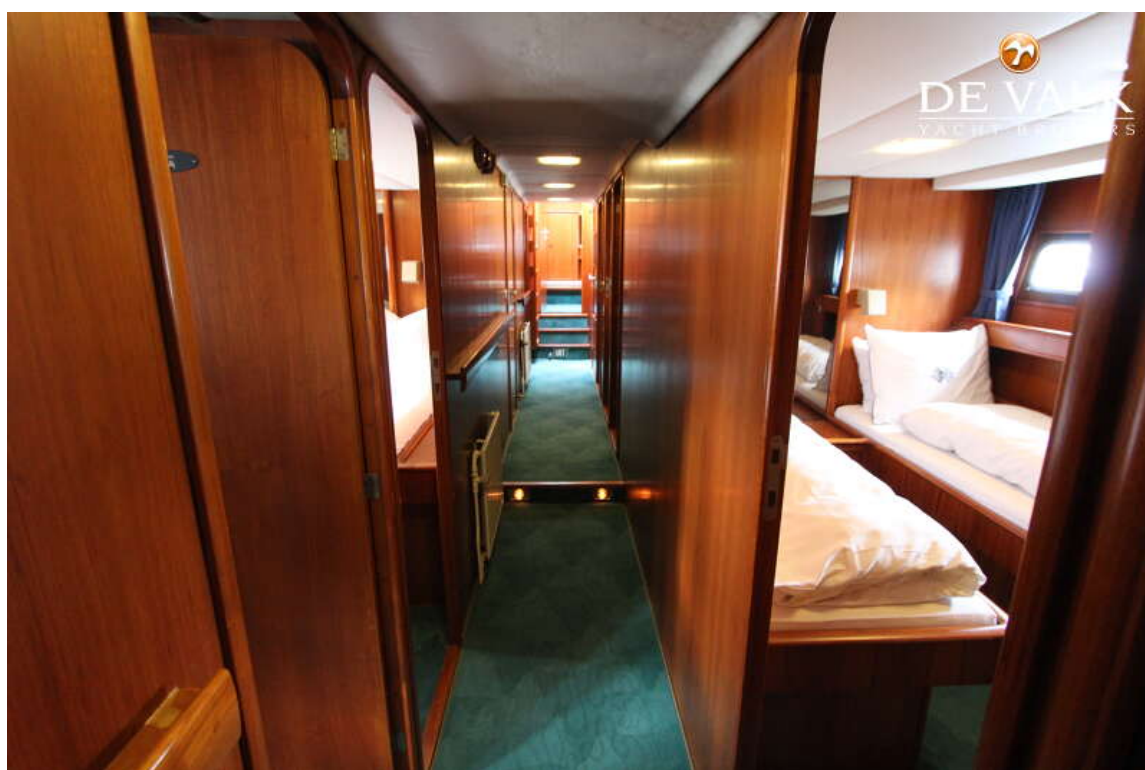














HEESEN 90



