



VENNEKENS KOTTER 12.45



VENNEKENS KOTTER 12.45

BROKER'S COMMENTS

A very neat Vennekens Kotter 12.45, built at the yard of the same name in Belgium. The vessel is built of wood-epoxy. This motor yacht is equipped with double glazing and central heating for an ultimate climate on board. The hull was completely repainted in 2015 and the superstructure was repainted in 2019.

Mark Hesselmans

SPECIFICATIONS

Dimensions	12.45 x 4.40 x 1.10 (m)	Builder	Jachtwerf Vennekens
Built	2004	Cabins	2
Material	Wood Epoxy	Berths	4
Engine(s)	1 x Vetus Deutz DT64 422A diesel	Hp/Kw	159.00 (hp), 116.87 (kw)
Asking price	sold (VAT)	Lying	at sales office

CONTACT

Sales office	De Valk Loosdrecht B.V.	Telephone	+31 (0)35 582 90 30
Address	't Breukeleveense Meentje 6 1231LM Loosdrecht / Wijdmeren NL	E-mail	loosdrecht@devalk.nl

DISCLAIMER

These particulars are given in good faith as supplied but cannot be guaranteed.



GENERAL

Model	VENNEKENS KOTTER 12.45
Type	motor yacht
LOA (m)	12,45
Beam (m)	4,40
Draft (m)	1,10
Air draft (m)	3,30
Air draft min (m)	4,90
Headroom (m)	2,00
Year built	2004
Builder	Jachtwerf Vennekens
Country	Belgium
CE norm	B
Hull material	wood epoxy
Hull colour	grey
Hull thickness (mm)	Red Cedar core
Hull shape	round-bilged
Superstructure material	wood epoxy
Rubbing strake	stainless steel
Deck material	wood epoxy
Deck finish	teak
Cockpit deck finish	teak
Antifouling (year)	2022
Window frame	aluminium
Window material	double glazing Rhigo and two normal openingglas windows
Deckhatch	yes
Portholes	aluminium
Mast can be lowered	manual
Fuel tank (litre)	stainless steel 650
Fuel tank 2 (litre)	stainless steel 650
Level indicator (fuel tank)	yes



Freshwater tank (litre)	stainless steel 500
Level indicator (freshwater)	yes
Blackwater tank (litre)	stainless steel 200
Level indicator (blackwater)	yes
Blackwater tank extraction	deck extraction + pump
Wheel steering	hydraulic With electrical Holland Nautical system
Outside helm position	hydraulic
More info on paintwork	2015 hull repainted
Extra info	2019 superstructure repainted

ACCOMMODATION

Cabins	2
Berths	4
Interior	cherry
Floor	teak and holly
Aft deck	yes
Saloon	yes
Headroom saloon (m)	2,10+/-
Sliding roof	manual Opening
Heating	Maritime Booster 17,5Kw
Dinette	yes
Opening door to aft deck	yes
Galley	yes
Sink	stainless steel
Cooker	ceramic Whirlpool Easytronic
Extractor	yes
Microwave/oven combi	Siemens
Fridge	Coolmatic
Freezer	In Fridge
Hot water system	on central heating
Water pressure system	electrical



Owners cabin	double bed
Wardrobe	hanging and shelves
Bathroom	en suite
Toilet	en suite
Toilet system	electric Tecma
Wash basin	at the toilet
Shower	en suite
Guest cabin 1	v-bed
Wardrobe	hanging and shelves
Bathroom	en suite
Toilet	en suite
Toilet system	electric Tecma
Wash basin	in the bathroom
Shower	en suite
Washing machine	Candy 4kg Aquamatic

MACHINERY

No of engines	1
Make	Vetus Deutz
Type	DT64 422A
HP	159
kW	116.87
Fuel	diesel
Year installed	2004
Maximum speed (kn)	9
Cruising speed (kn)	7
Consumption (l/hr)	6
Engine hours	3254
Engine cooling system	freshwater heat exchanger
Drive	shaft
Engine controls	yes



Gearbox	hydraulic Hurth
Bowthruster	electric Vetus
Exhaust	watercooled
Propeller type	fixed
Propeller blades	4
Propeller shaft material	stainless steel 40mm
Electric bilge pump	yes
Generator	Vetus 8kwh
Running hours generator	380
Batteries	yes
Start battery	LP AGM 120Ah (2022)
Service battery	6x LP AGM 100Ah (2022)
Generator battery	Panther 55Ah (2019)
Battery monitor	Victron BMV 501
Battery charger/inverter	Victron Multiplus 3000W
Shorepower	with cable

NAVIGATION

Depth sounder	Raymarine ST60
Log	On Garmin and Plotter
VHF	Simrad RS35
Autopilot	Raymarine ST6002
GPS	GARMIN GPS72
Plotter	Raymarine RC435I
Navigation lights	yes

EQUIPMENT

Cockpit cover	2015
Bimini	2015
Sun awning	yes
Cockpit cushions	yes



Bathing platform	yes
Boarding ladder	stainless steel
Deck shower	yes
Anchor	yes
Anchor chain	yes
Windlass	electrical Vetus
Sea railing	yes
Grab rail (superstructure)	stainless steel
Railing side opening gates	yes
Wiper	yes
Horn	yes
Fenders	yes
Mooring lines	yes
Spare parts	yes
TV	Philips
Radio-cd player	Sony
Fire extinguisher	In salon
Extinguisher in engine room	yes
Auto extinguisher system	yes





BROKERAGE | CHARTER | BERTHS | FINANCE | INSURANCE | YACHT MANAGEMENT

DE VALK
YACHT BROKERS



**This yacht will be auctioned,
for further details please visit www.devalk.nl**

**Dit schip zal worden geveild,
voor meer informatie gaat u naar www.devalk.nl**

**Dieses Schiff wird versteigert,
für weitere informationen besuchen Sie www.devalk.nl**

WWW.DEVALK.NL



DE VALK
YACHT BROKERS



VENNEKENS KOTTER 12.45



VENNEKENS KOTTER 12.45



VENNEKENS KOTTER 12.45



VENNEKENS KOTTER 12.45



VENNEKENS KOTTER 12.45



VENNEKENS KOTTER 12.45



VENNEKENS KOTTER 12.45



VENNEKENS KOTTER 12.45



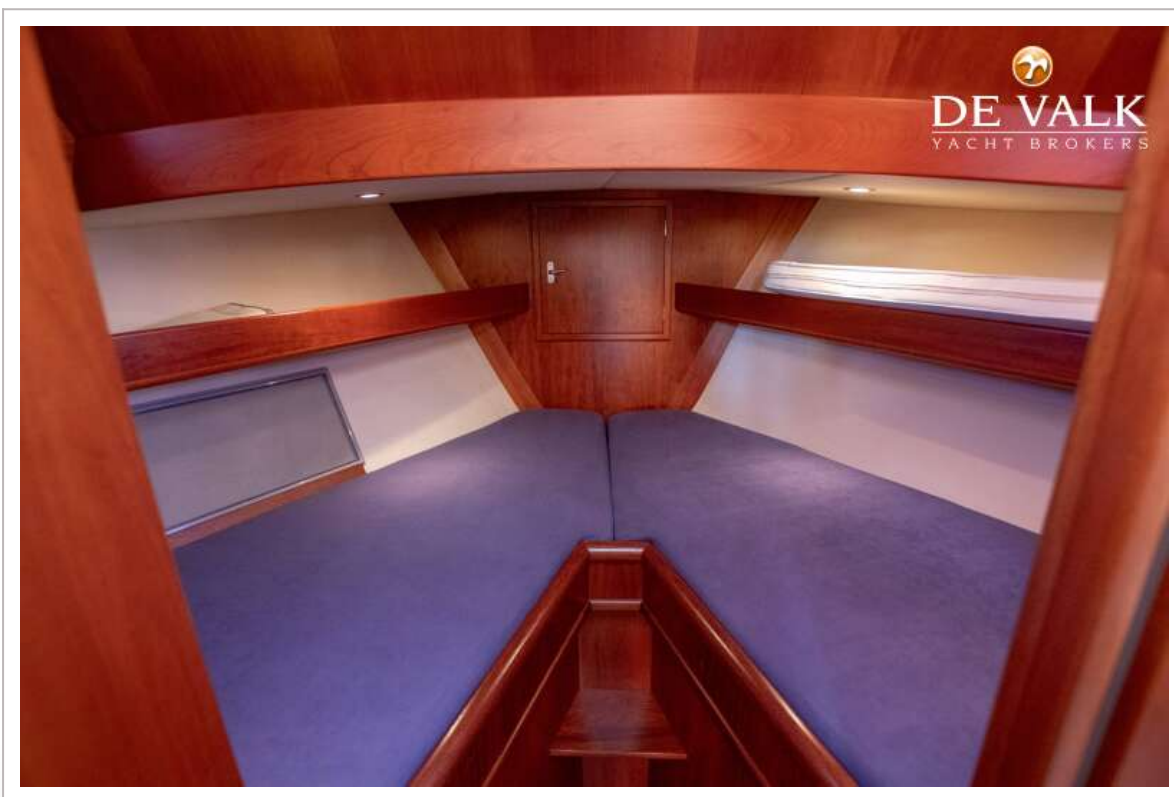
VENNEKENS KOTTER 12.45



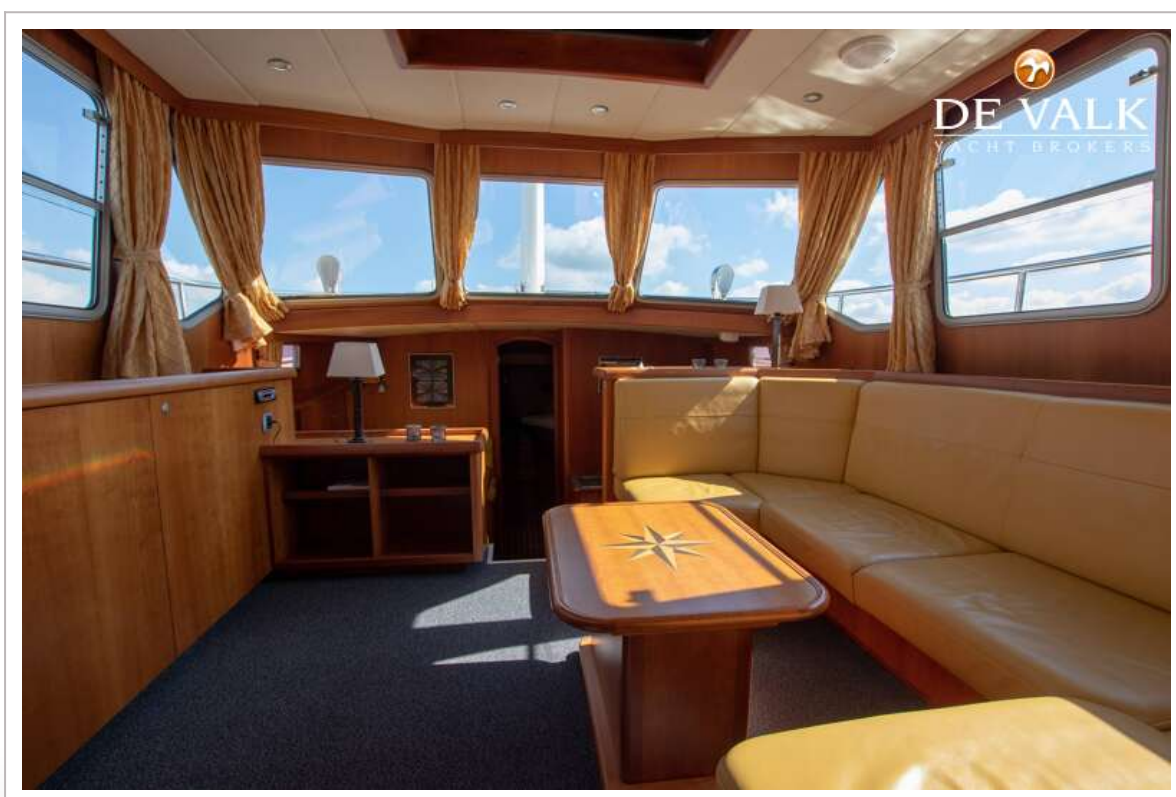
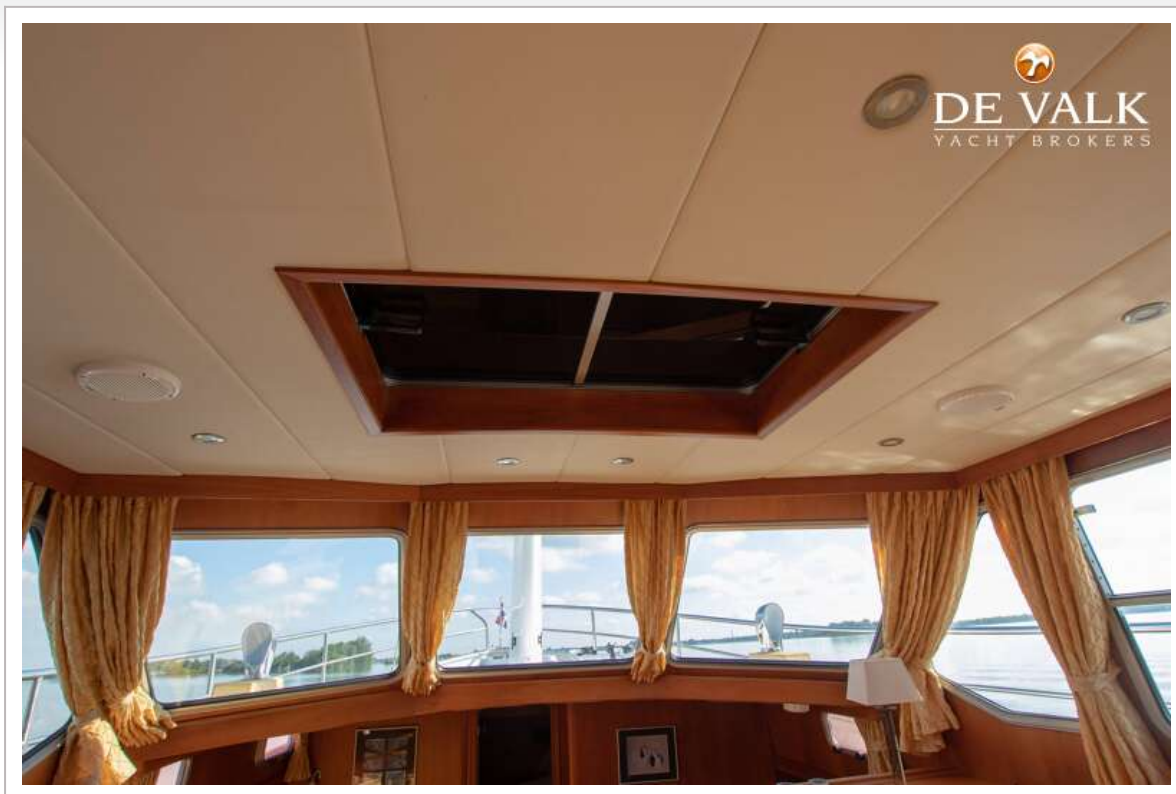
VENNEKENS KOTTER 12.45



VENNEKENS KOTTER 12.45



VENNEKENS KOTTER 12.45



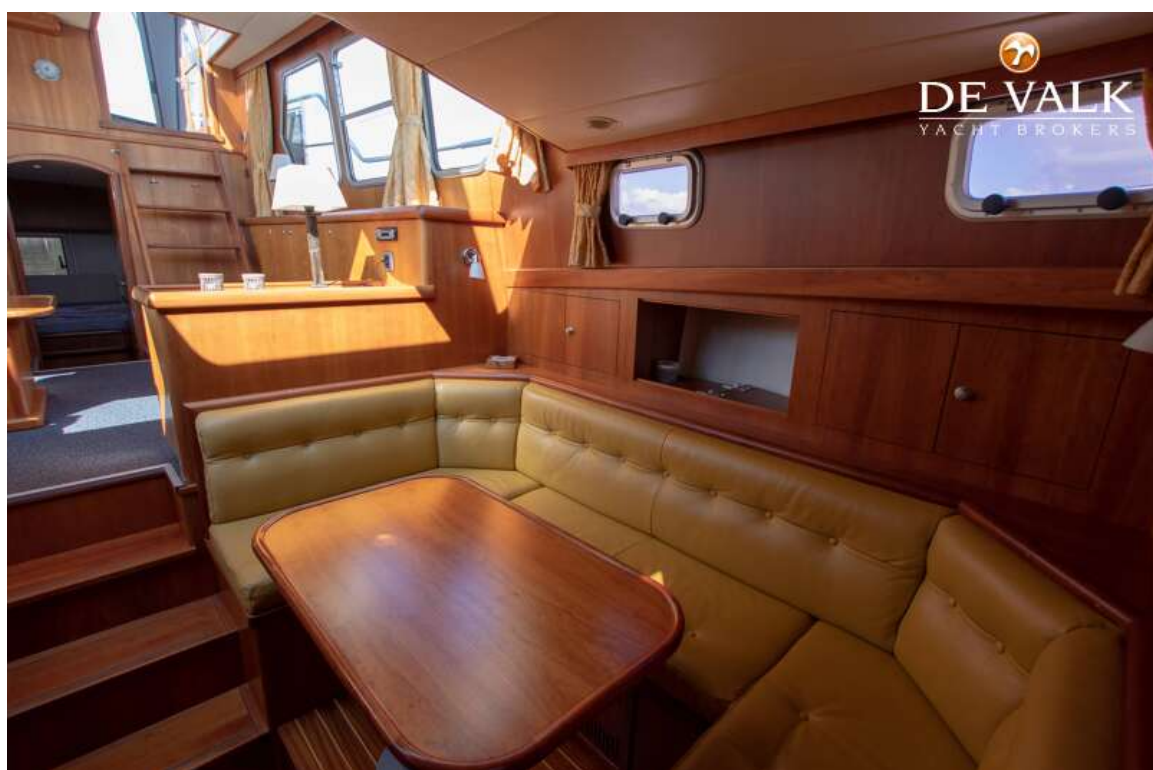
VENNEKENS KOTTER 12.45



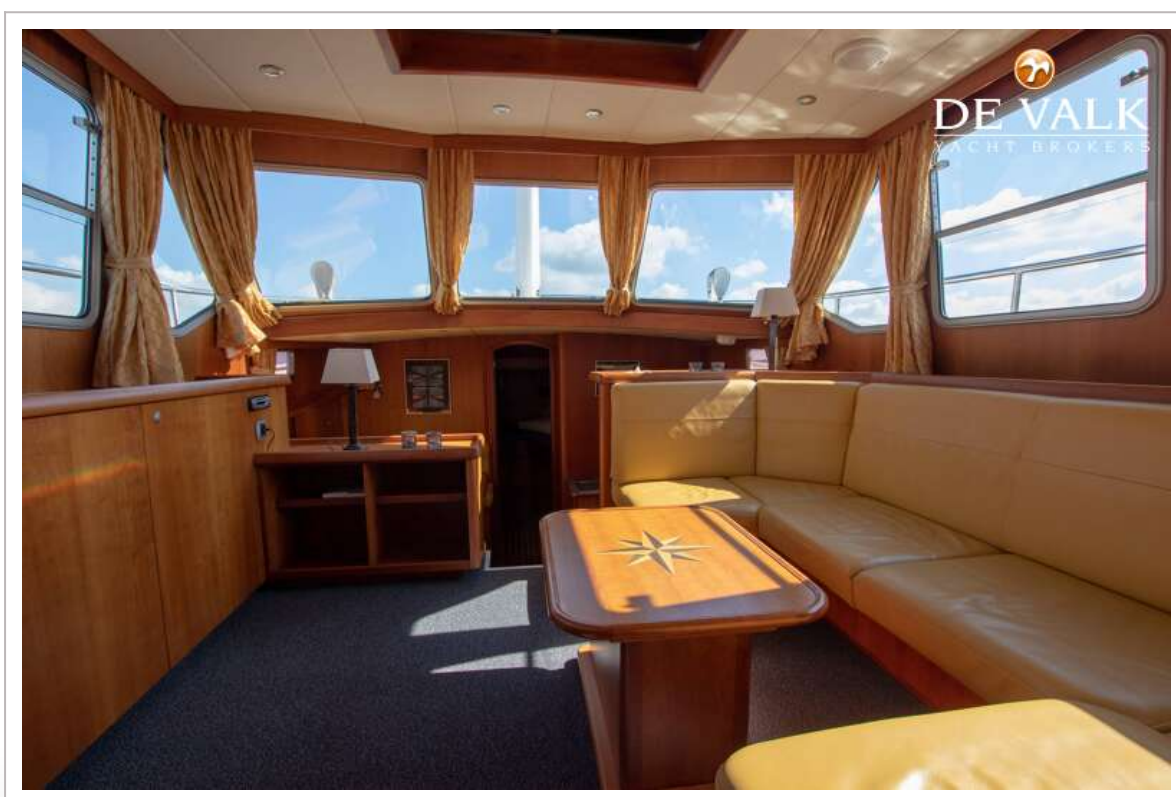
VENNEKENS KOTTER 12.45



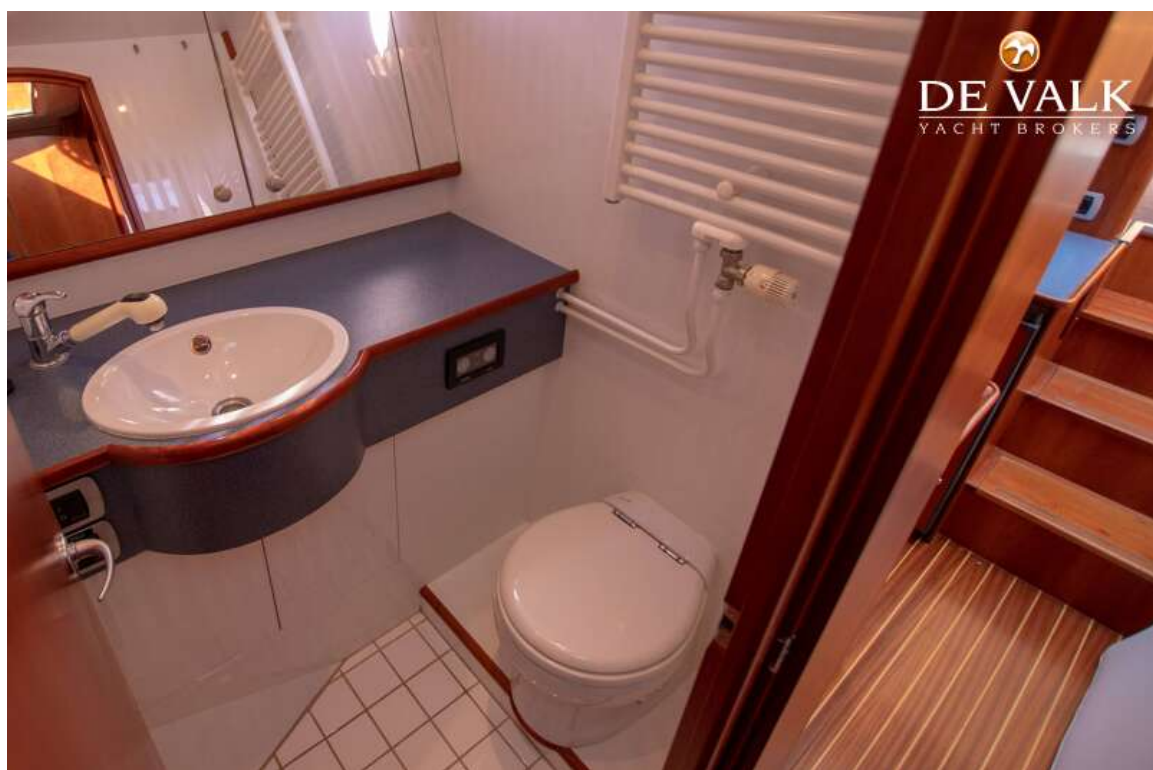
VENNEKENS KOTTER 12.45

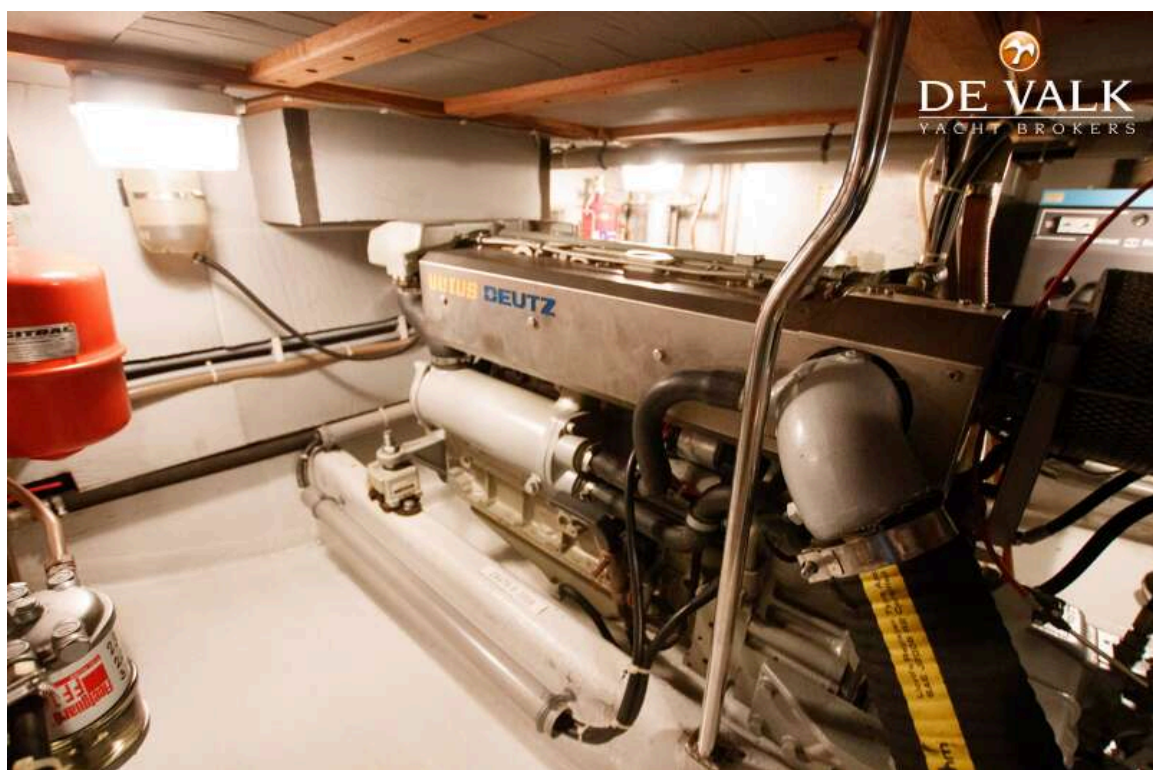


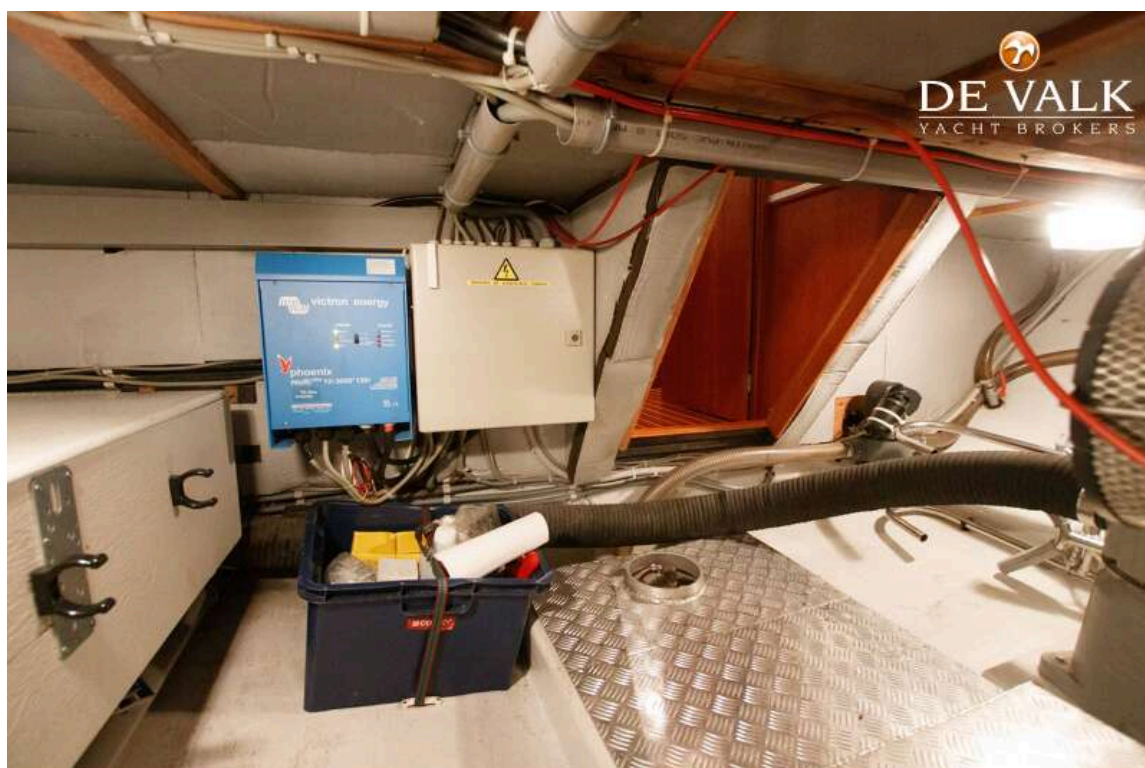
VENNEKENS KOTTER 12.45



VENNEKENS KOTTER 12.45







VENNEKENS KOTTER 12.45

