



DEFEVER 49



DE VALK
YACHT BROKERS

BROKER'S COMMENTS

Spacious long range trawler Defever 49 Pilothouse perfect for extended cruising or living on board. Designed by the American Naval Architect Arthur DeFever, she has been constructed using Knytex E-glass and Divinicell foam core GRP (sandwich hull). She is equipped with hydraulic steering with emergency tiller, & with 2nd steering position on flybridge. DeFever 49 is an easy boat for a couple to handle, with side decks protected by high bulwarks, the security of the Portuguese bridge, and easy access from bow to stern for docking.

Sofia Ilia-Salvanou

SPECIFICATIONS

Dimensions	15.72 x 4.70 x 1.50 (m)	Builder	Sen Koh Shipbuilding Co. Ltd.
Built	1980	Cabins	2
Material	GRP	Berths	4
Engine(s)	2 x Ford Leaman 27 15E	Hp/Kw	2 x 120.00 (hp), 88.20 (kw)
Asking price	sold (VAT)	Lying	at sales office

CONTACT

Sales office	De Valk Corfu	Telephone	(+30) 266 111 8095
Address	New Port of Corfu, near Gouvia Marina 490 83 Corfu GR	E-mail	corfu@devalk.nl

DISCLAIMER

These particulars are given in good faith as supplied but cannot be guaranteed.



GENERAL

Model	DEFEVER 49
Type	motor yacht
LOA (m)	15,72
Beam (m)	4,70
Draft (m)	1,50
Air draft (m)	5,30
Year built	1980
Builder	Sen Koh Shipbuilding Co. Ltd.
Country	Taiwan
Designer	Arthur DeFever
Displacement (t)	23
CE norm	NA
Hull material	GRP
Hull colour	off-white
Superstructure material	GRP
Deck material	GRP
Deck finish	non-skid moulded in
Superstructure deck finish	non-skid moulded in
Antifouling (year)	2020
Window frame	yes
Portholes	yes
Insulation	yes
Flybridge	yes
Flybridge cover	yes
Flybridge cockpit cover	yes
Radar arch	yes
Mast can be lowered	yes
Fuel tank (litre)	3200
Level indicator (fuel tank)	PHILIP Fuel Gauge with ultrasonic tank sensor (2011)
Freshwater tank (litre)	1600



Level indicator (blackwater)	yes
Blackwater tank extraction	yes
Wheel steering	yes
Inside helm position	yes
Flybridge helm position	yes

ACCOMMODATION

Cabins	2
Berths	4
Interior	Wood
Floor	parquet Carpet
Aft deck	yes
Saloon	yes
Heating	yes
Air-conditioning	AIRC MCS10 (2011)
Navigation center	yes
Chart table	yes
Aft Cabin	yes
Dinette	yes
Opening door to cockpit	yes
Opening door to aft deck	yes
Galley	yes
Countertop	yes
Sink	yes
Cooker	yes
Oven	yes
Microwave	yes
Fridge	X 2 (2017)
Hot water system	yes
Dishwasher	yes
Coffee maker	yes



Crockery	yes
Owners cabin	double bed
Wardrobe	hanging/drawers/shelves
Bathroom	en suite
Toilet	en suite
Toilet system	electric
Wash basin	in the bathroom
Shower	en suite
Bath tub	en suite
Guest cabin 1	v-bed
Wardrobe	hanging and shelves
Bathroom	separate
Toilet	separate
Toilet system	electric
Wash basin	in the bathroom
Shower	separate
Washing machine	(2017)
Flybridge	yes
Extra info	Doors:new
Extra info	Bathrooms repainted

MACHINERY

No of engines	2
Make	Ford Leaman
Type	27 15E
HP	120
kW	88,20
Maximum speed (kn)	10
Cruising speed (kn)	7
Drive	shaft
Bowthruster	VETUS BOW22024B 220Kgf.24V (2007)



Sternthruster	yes
Propeller type	fixed
Propeller blades	4
Propeller shaft material	steel
Electric bilge pump	yes
Generator	ONAN Cummings (2008)
Batteries	yes
Battery charger	BLG20M 12V IUoU 20A 12V Two Banks (2007)
Inverter	yes
Solar panel	X 4
Shorepower	with cable
Watermaker	Pure water desalination system
Extra info	Engines service 2020

NAVIGATION

Compass	yes
Depth sounder	yes
Log	yes
VHF	yes
Autopilot	RAYMARINE ST-80002 (2010) Sea Talk wireless autopilot
Radar	yes
GPS	RAYMARINE
Plotter	yes
Plotter/GPS	Standard Horizon CP3001 with internal GPS antenna (2012)
Radar/GPS	FURUNO NX-300 H-FIELD
Radar/GPS/plotter	yes
Weather receiver	yes
Personal computer	yes
AIS receiver	yes
AIS transponder	yes
Transmitter	Easy TRX AIS WITH INTERNAL gps receiver



Camera	yes
Navigation lights	yes

EQUIPMENT

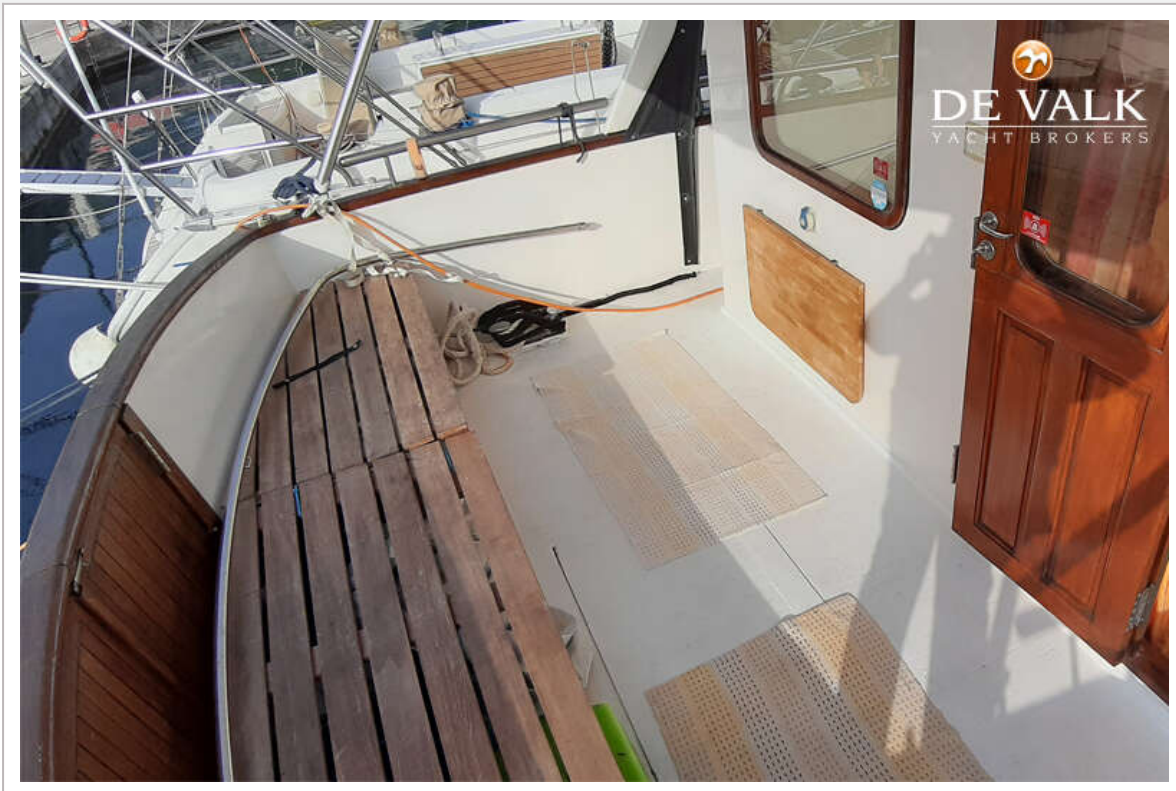
Bimini	yes
Sun awning	yes
Window cover	yes
Cockpit table	yes
Bathing platform	yes
Boarding ladder	yes
Transom door	yes
Gangway	BOINOX Bo 5400114 (2008)
Anchor	yes
Anchor chain	100m (2017)
Windlass	yes
Dinghy	New
Outboard	Honda 15Hp
Deck crane	ALMAR 25-210 (2008)
Sea railing	yes
Railing side opening gates	yes
Life raft	yes
Lifejackets	yes
Fenders	yes
Mooring lines	yes
Tools	yes
TV	yes
Clock - barometer	yes
Fire extinguisher	yes
Extinguisher in engine room	yes

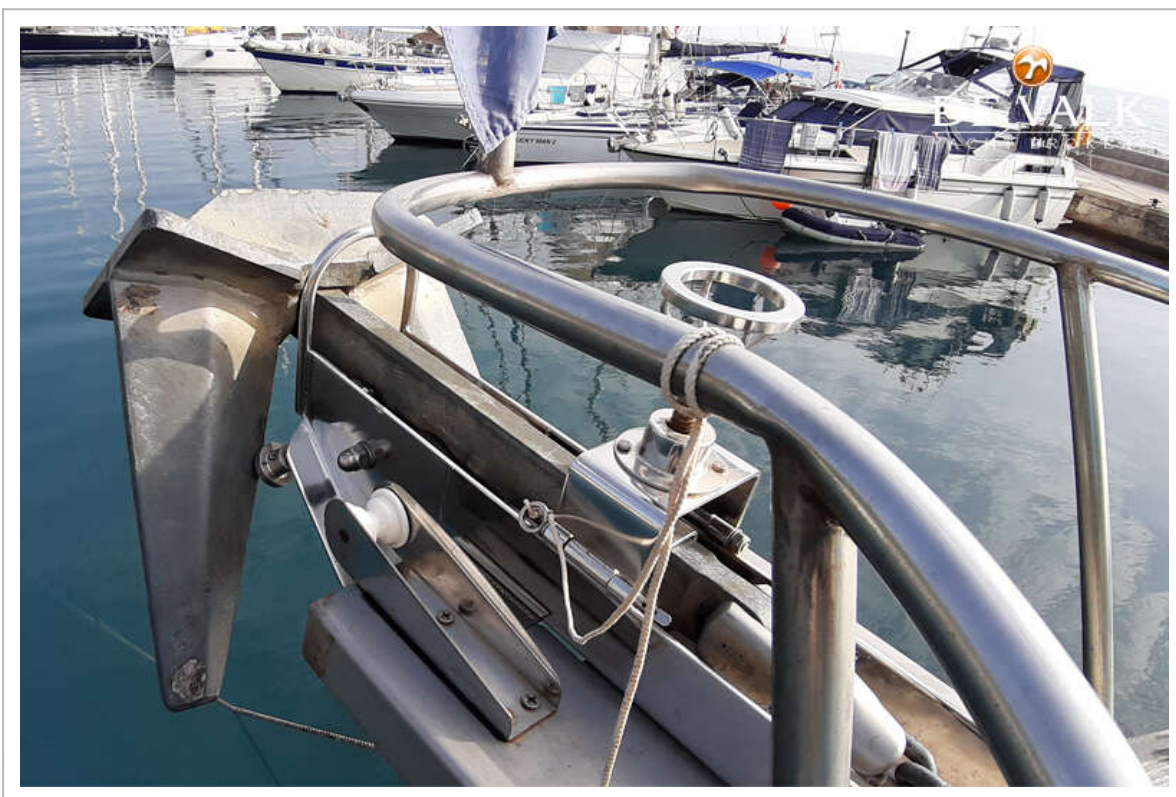


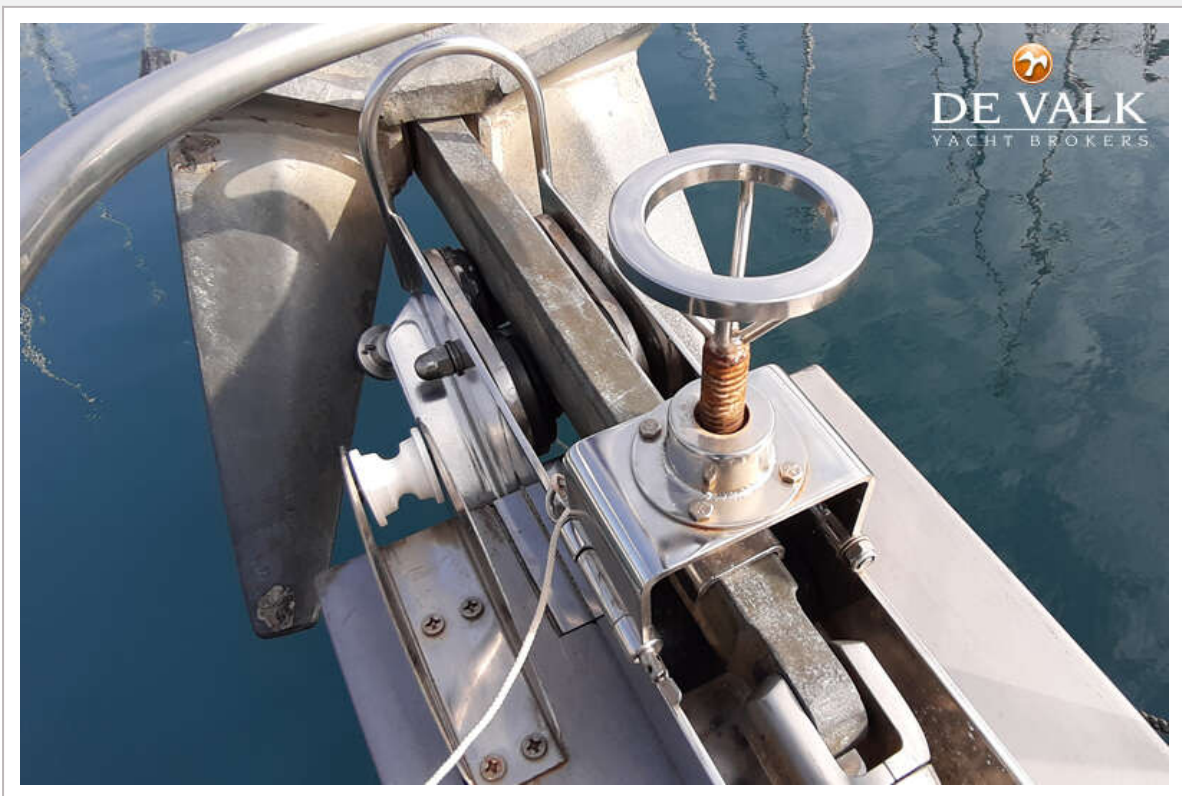


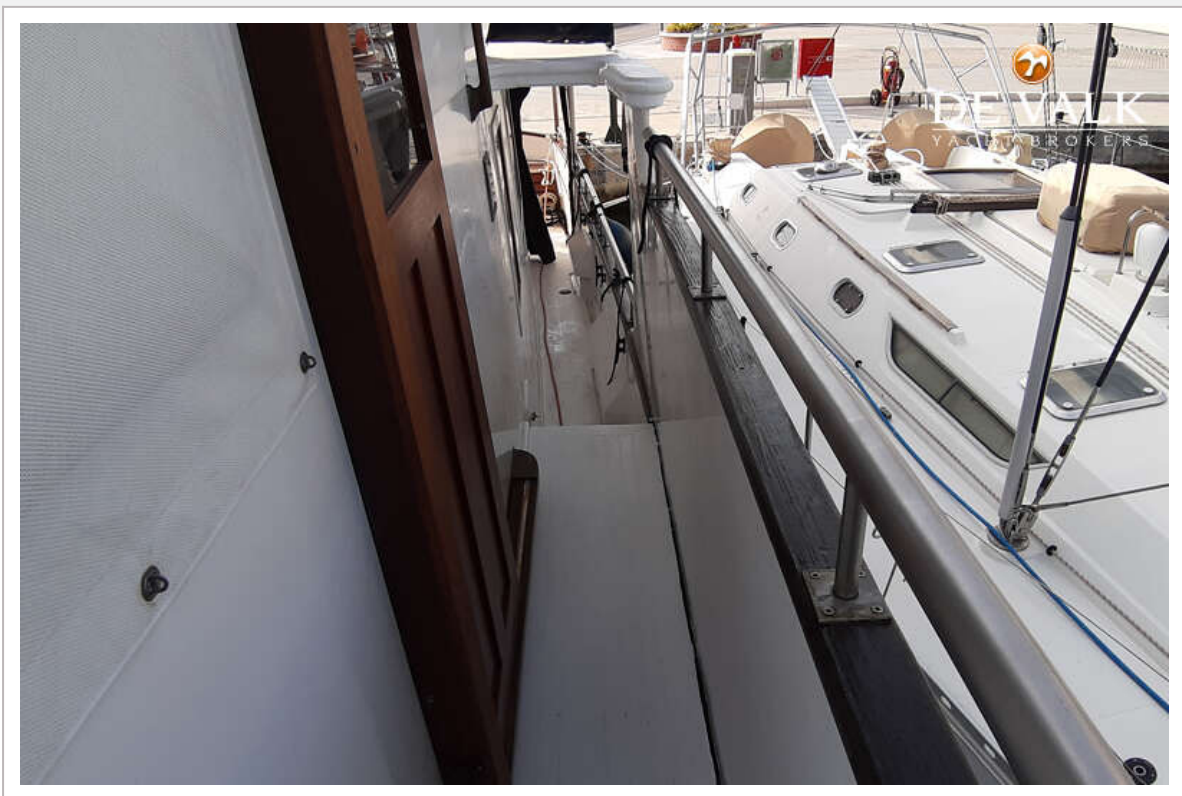


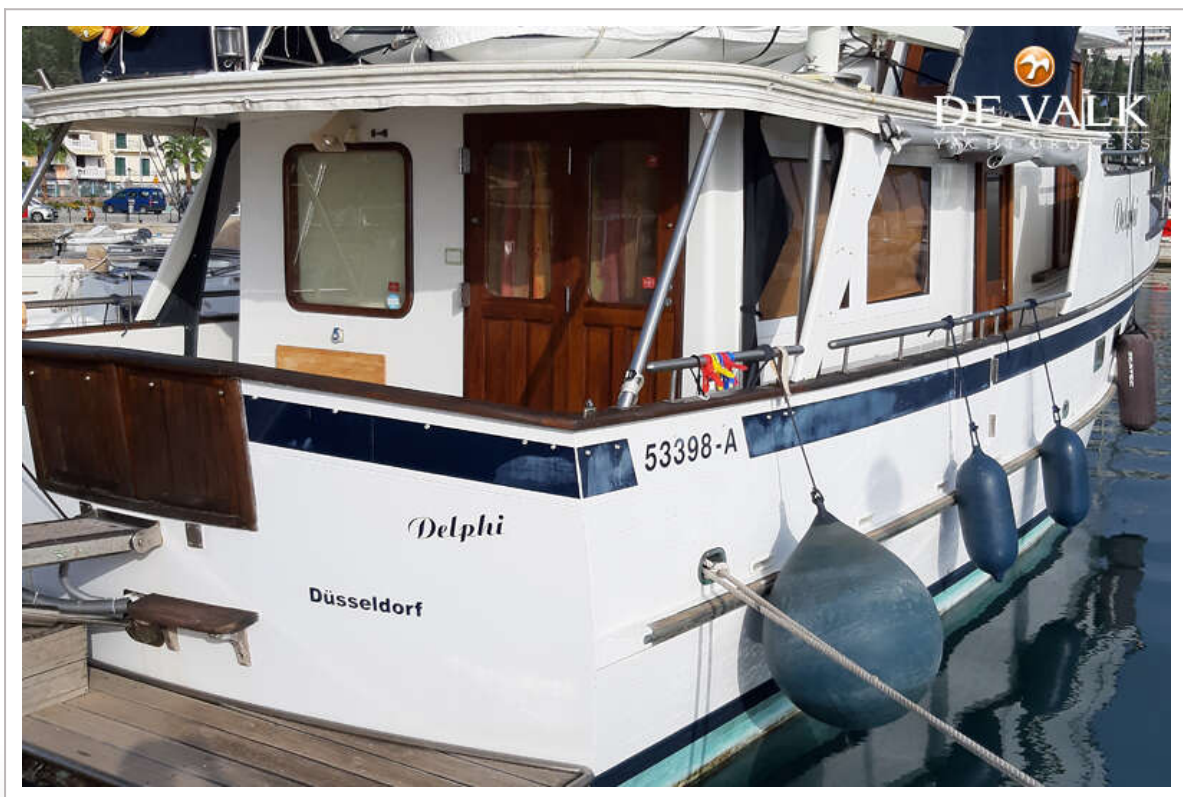
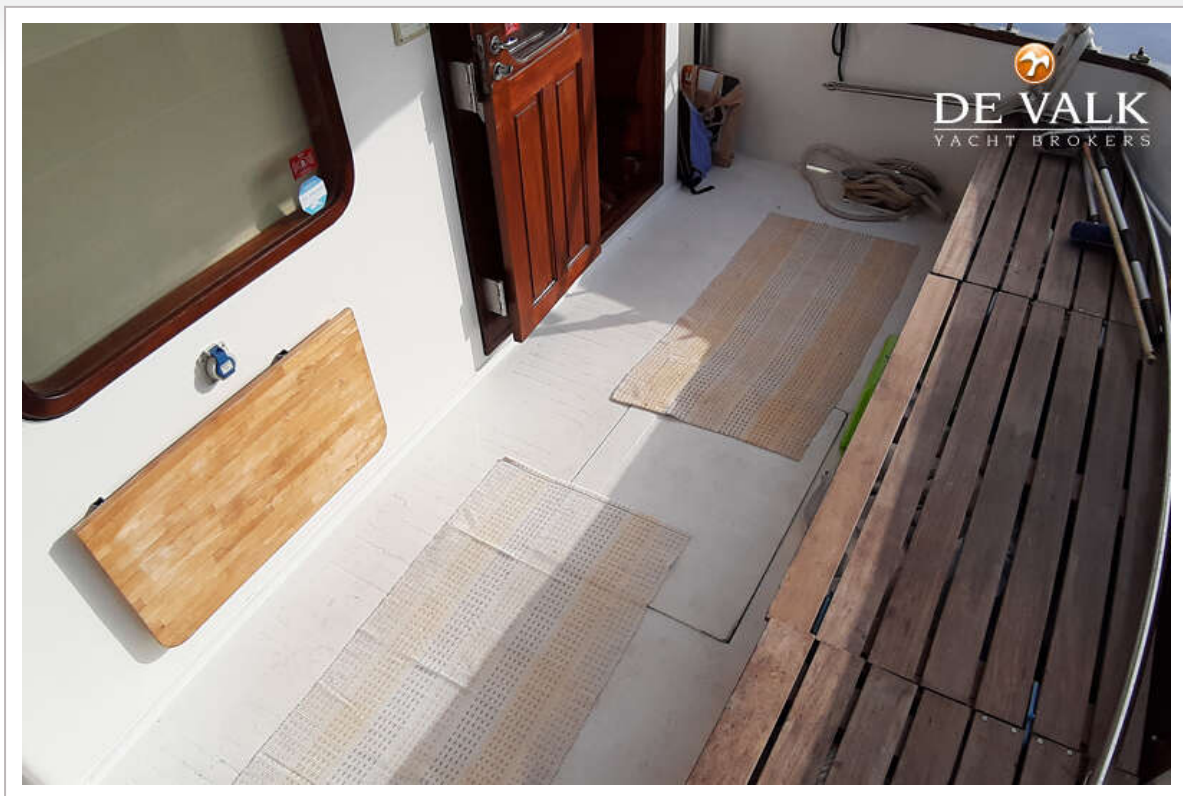




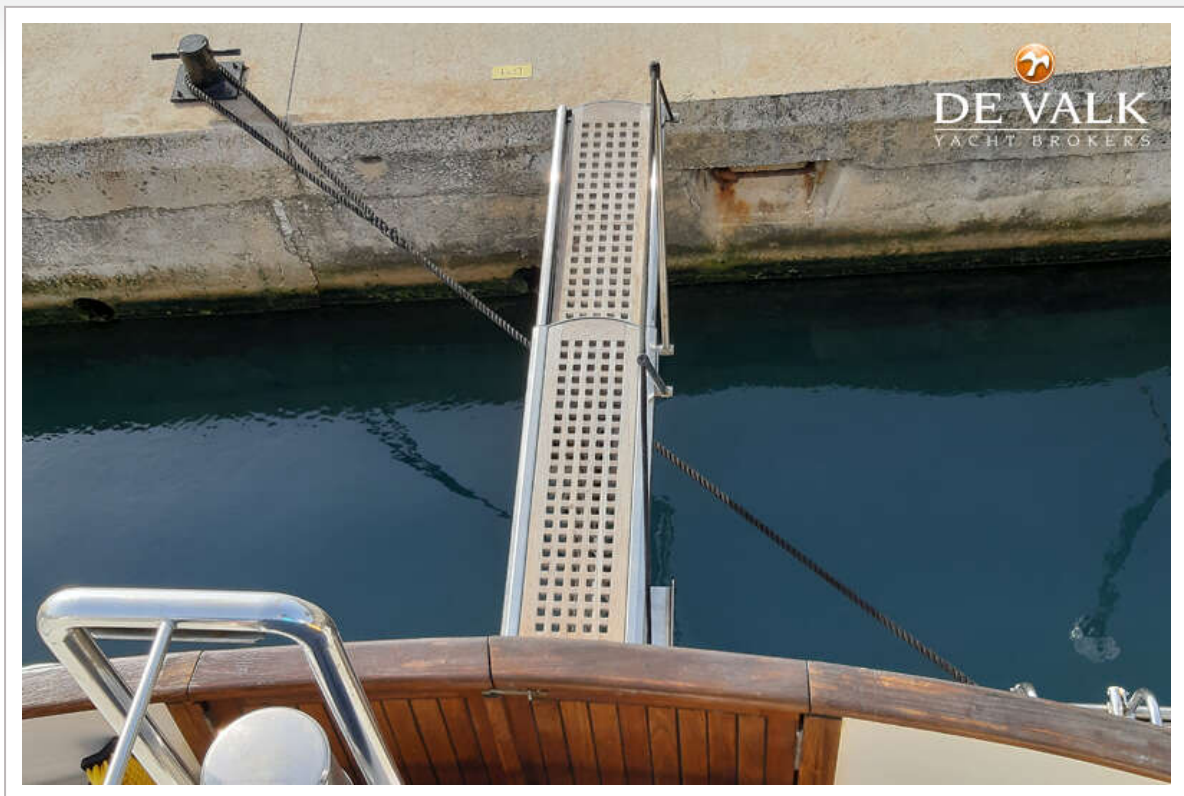


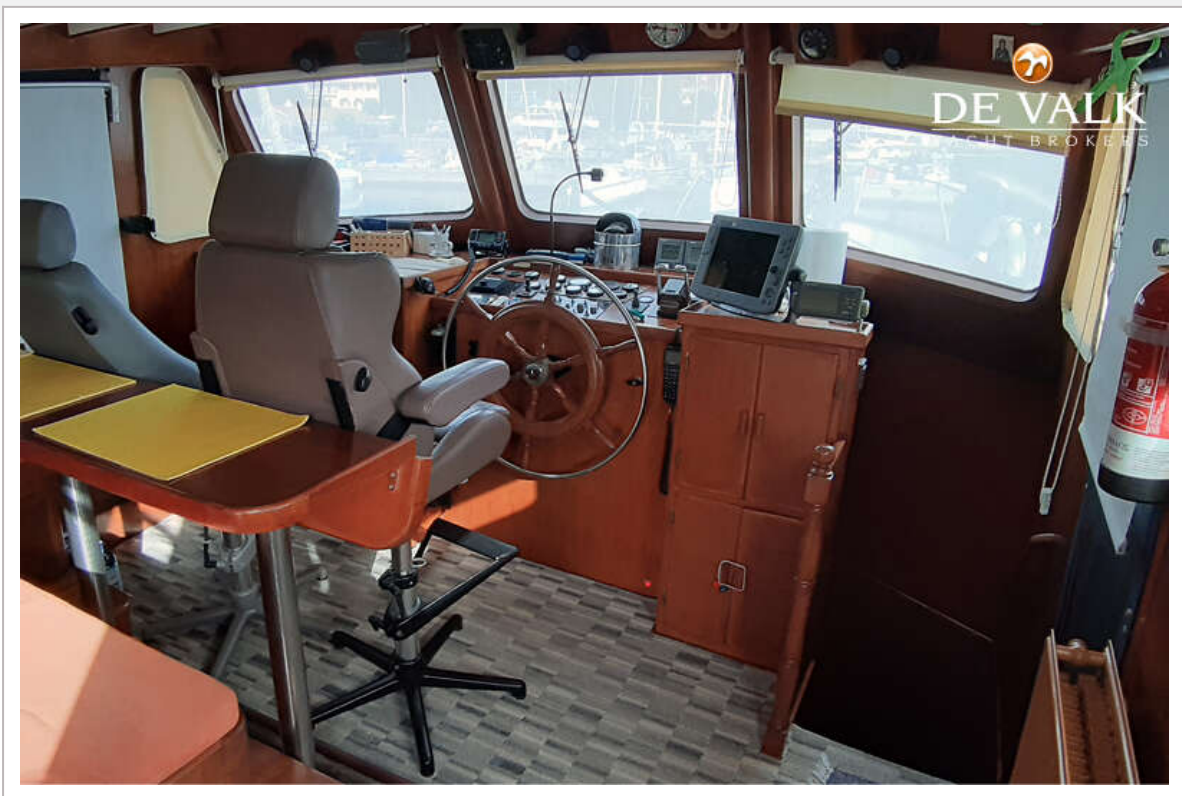




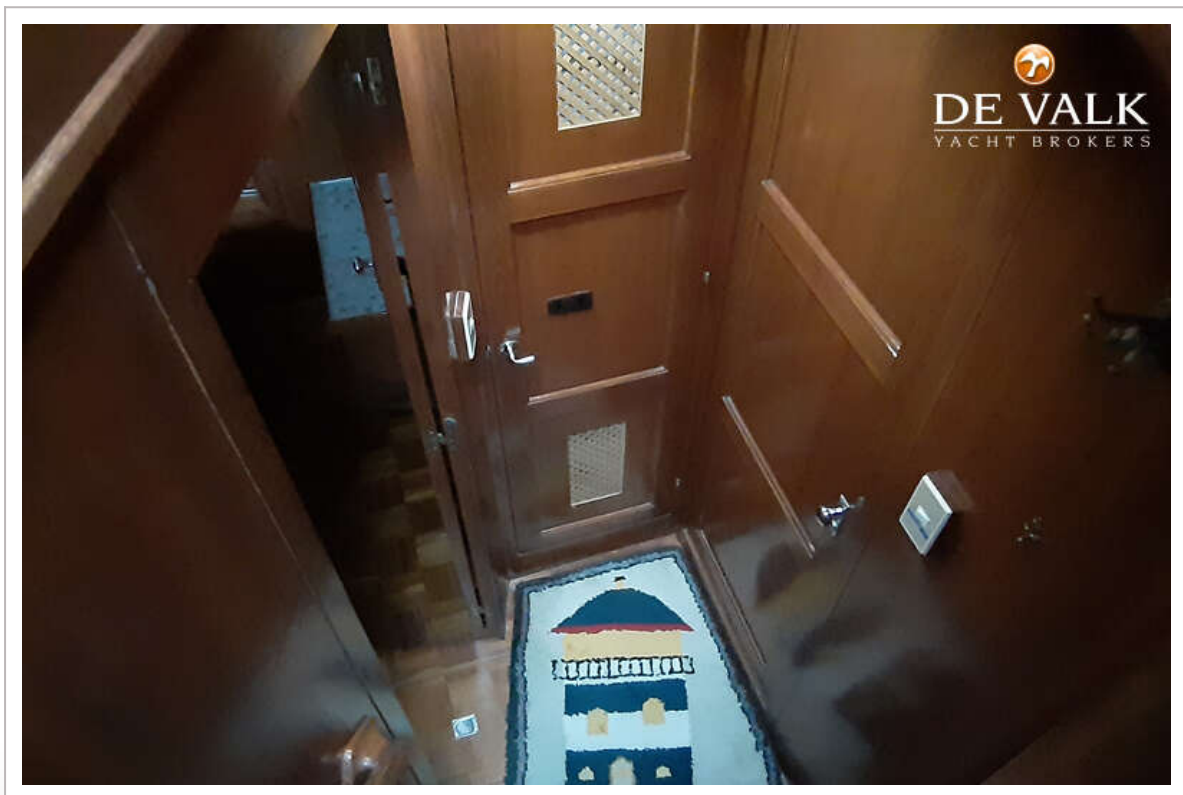
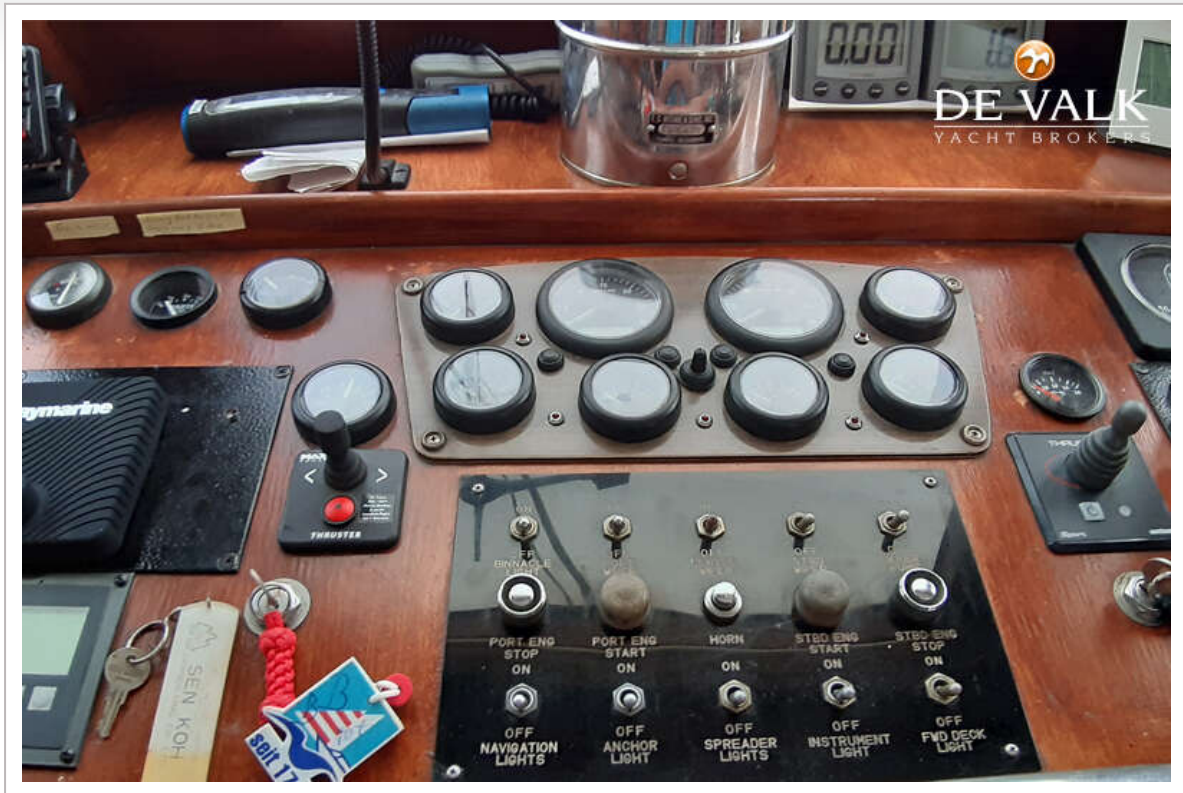


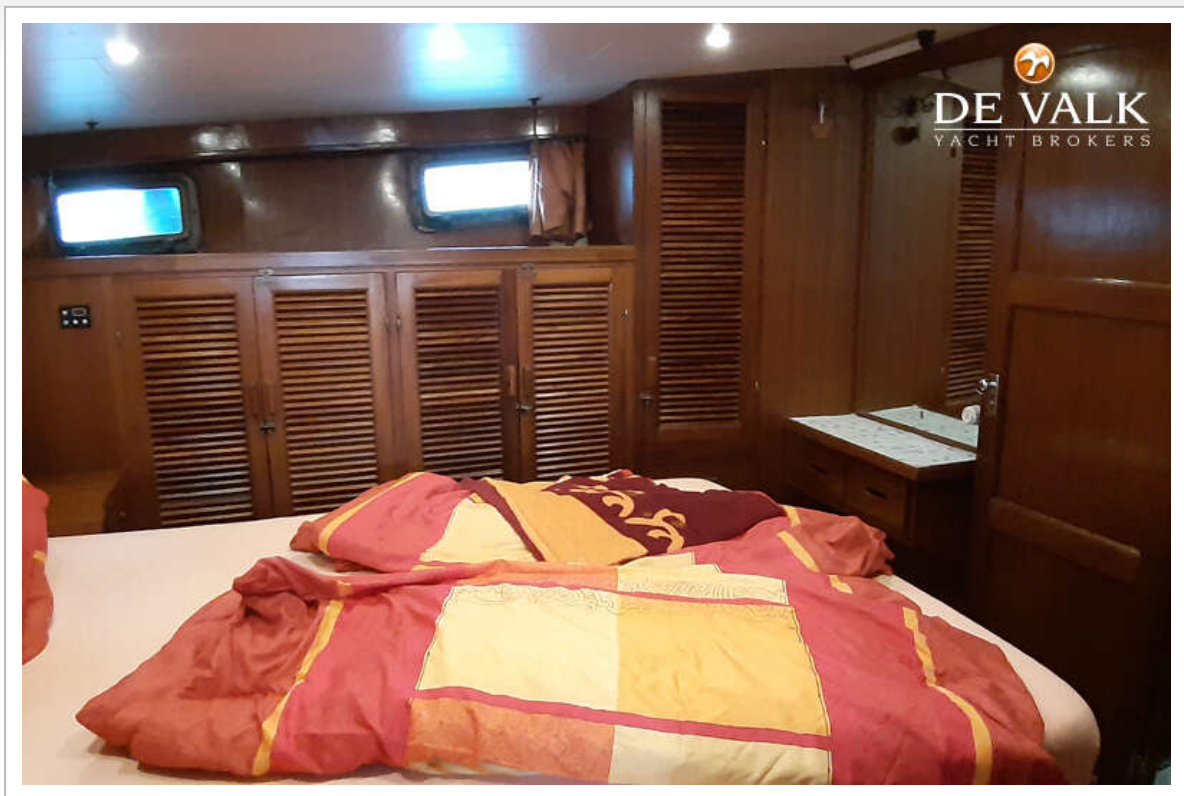


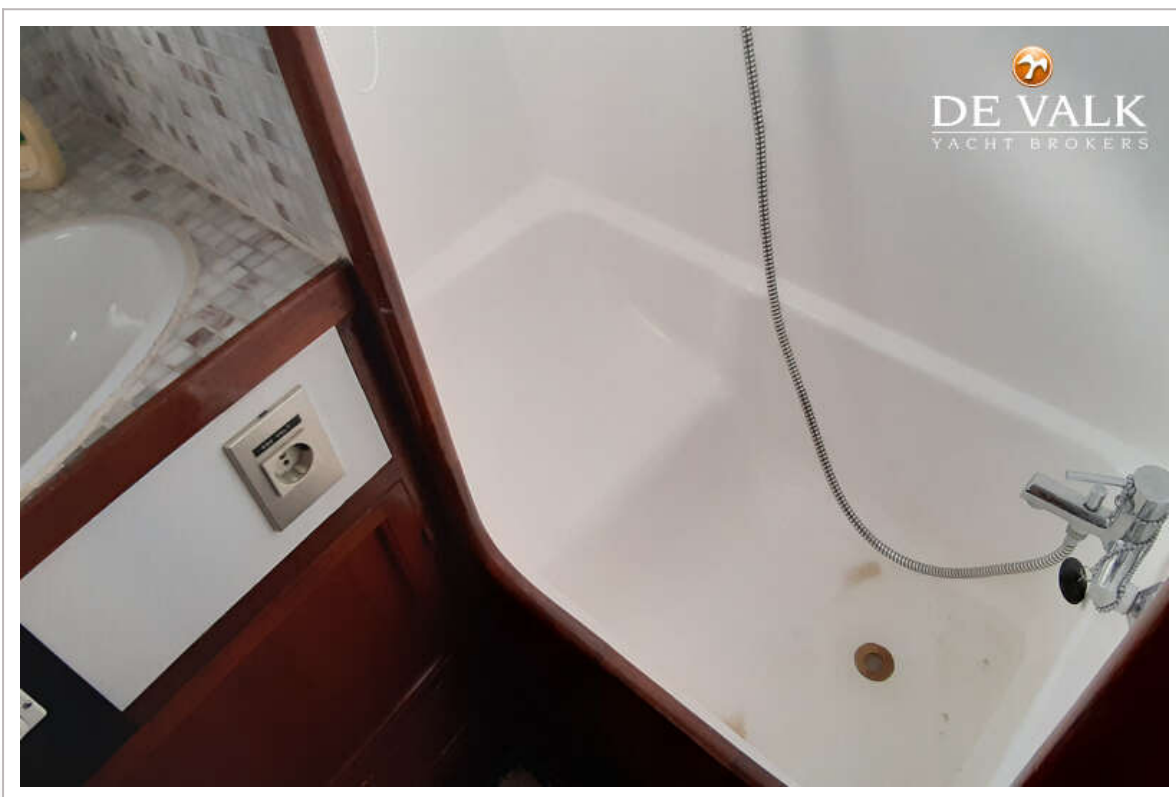


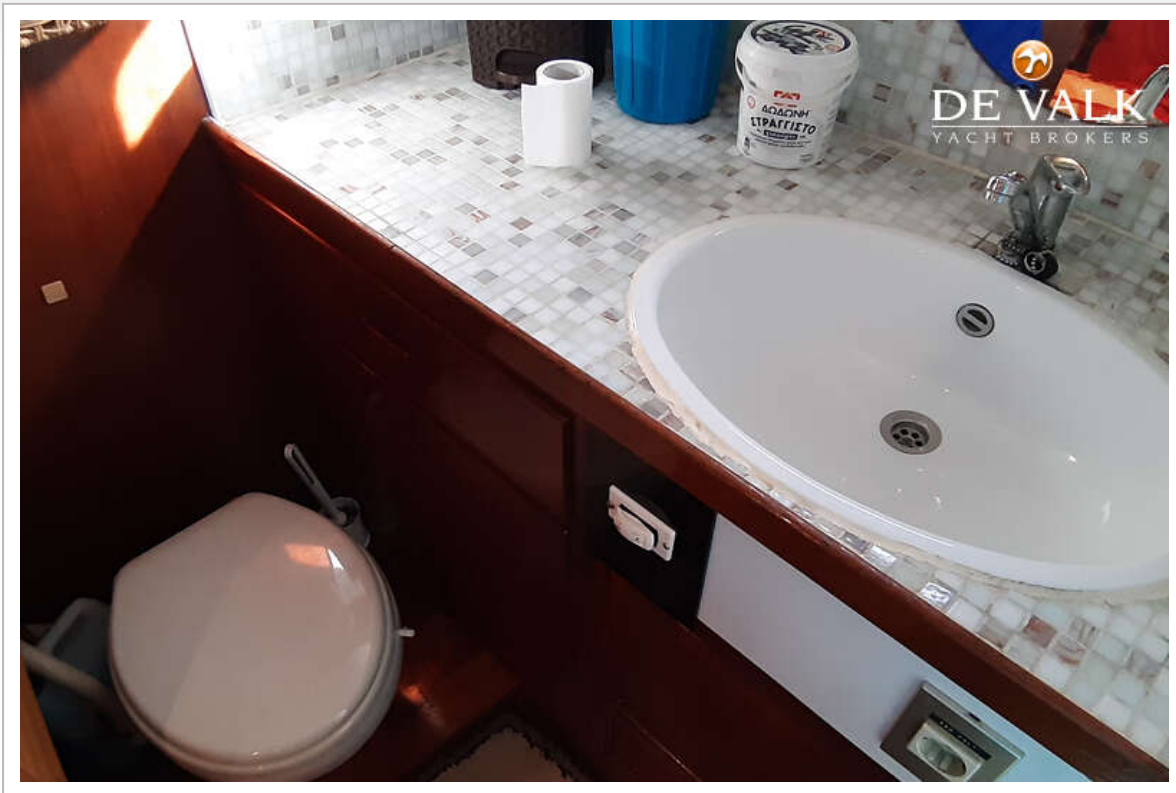


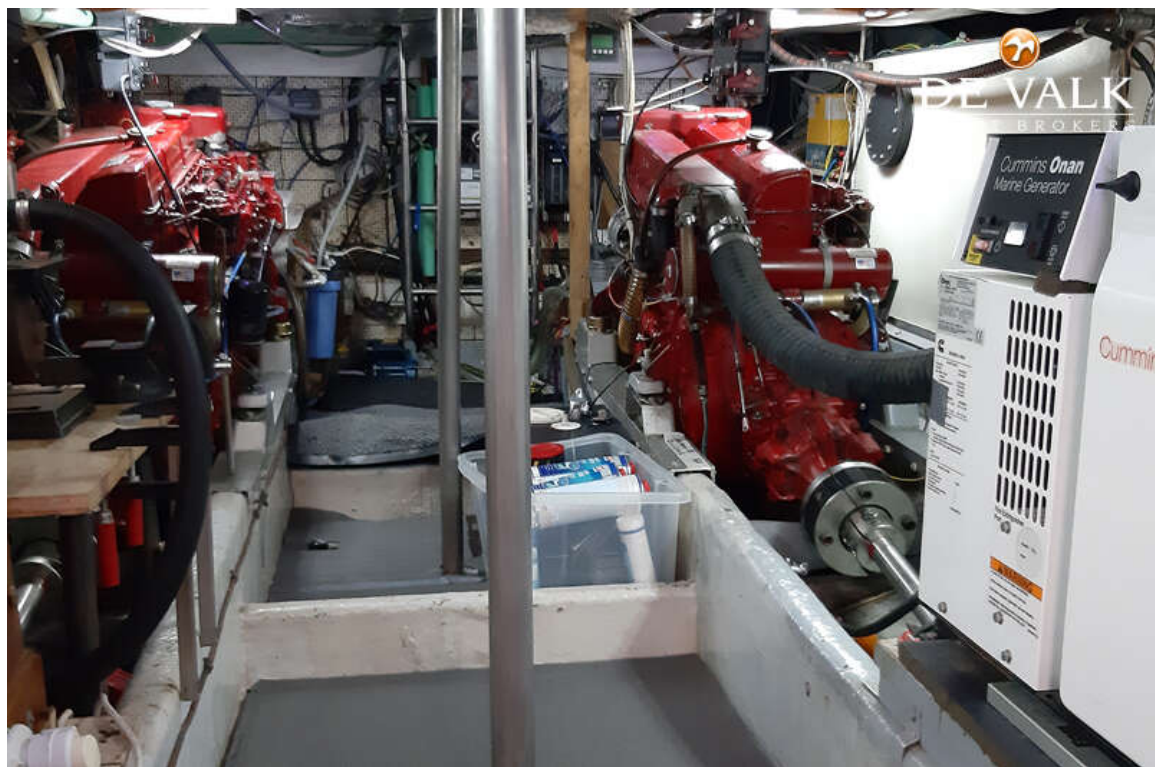


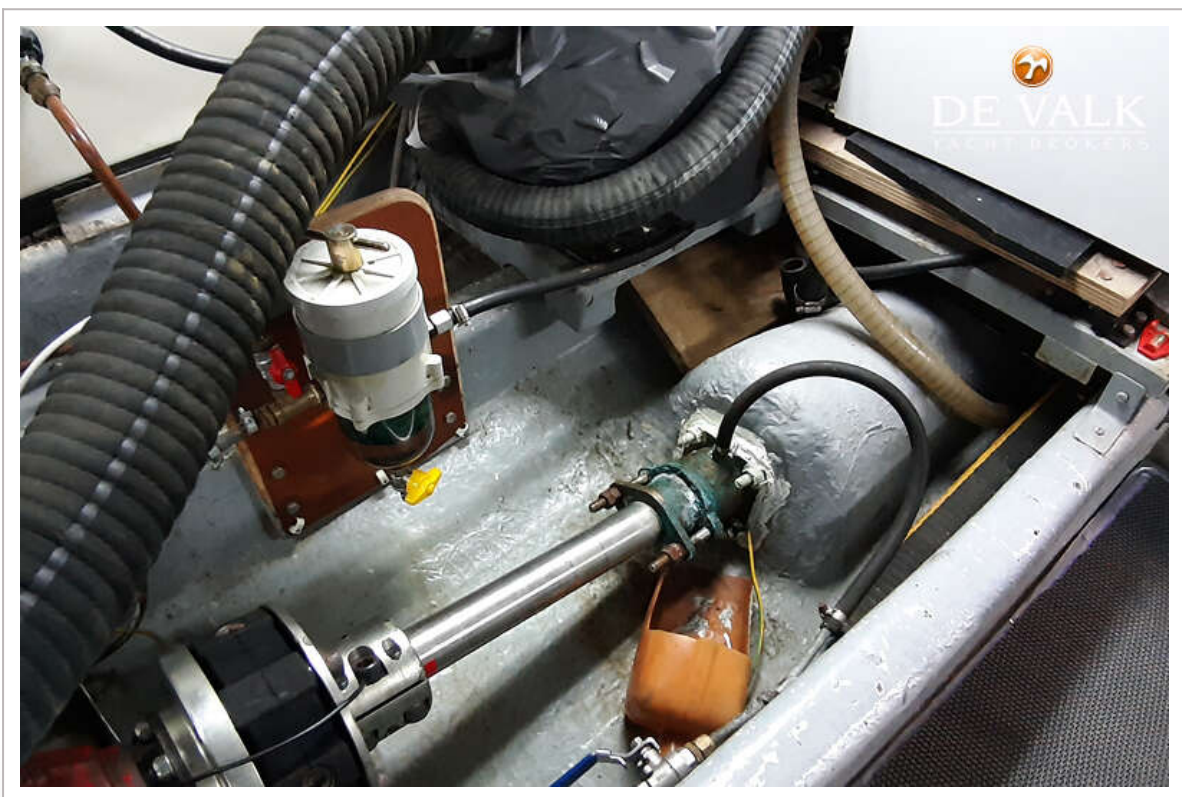
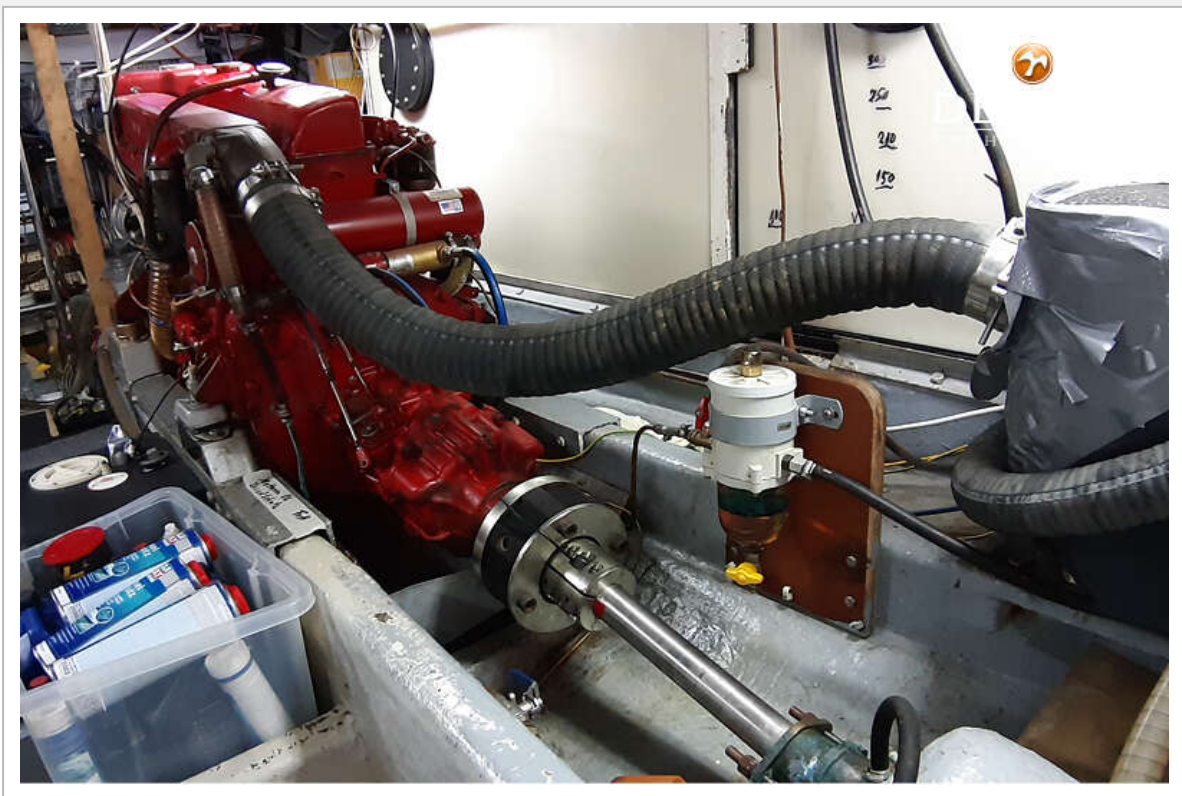


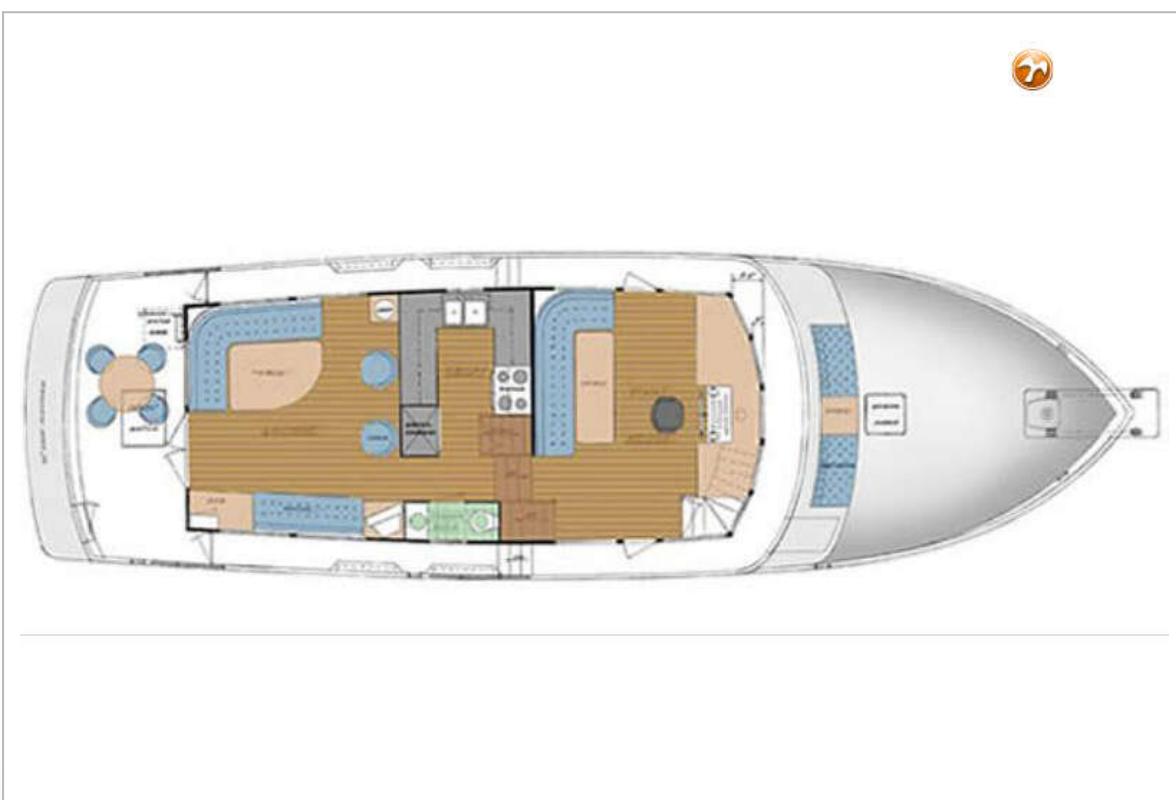














actual boat has slightly different layout

