



DE VALK  
YACHT BROKERS



## SUPPORT VESSEL RAUWDOUWER



DE VALK  
YACHT BROKERS

# SUPPORT VESSEL RAUWDOUWER

## BROKER'S COMMENTS

De Rauwouwer is a former patrol vessel that served on the Western Scheldt. Built in 1976 at the Schouten shipyard in Muiden. After first serving as an inspection vessel, the V87 was renamed to Rauwouwer. She is equipped with large aftdeck with drag equipment, fire pump + installation, large bridge with allot of nautical equipment, 2 cabins, shower / toilet and neat engine room. She can be used for many purposes, SI approved until 2024.

**Mark Hesselmans**

## SPECIFICATIONS

<b>Dimensions</b>	24.80 x 5.50 x 2.20 (m)	<b>Builder</b>	Scheepswerf Schouten Muiden
<b>Built</b>	1976	<b>Cabins</b>	2
<b>Material</b>	Steel	<b>Berths</b>	4
<b>Engine(s)</b>	1 x Stork Werkspoor DRO 218 diesel	<b>Hp/Kw</b>	450.00 (hp), 330.75 (kw)
<b>Asking price</b>	sold (VAT )	<b>Lying</b>	elsewhere / Not at sales office

## CONTACT

<b>Sales office</b>	De Valk Loosdrecht B.V.	<b>Telephone</b>	+31 (0)35 582 90 30
<b>Address</b>	't Breukeleveense Meentje 6 1231LM Loosdrecht / Wijdmeren NL	<b>E-mail</b>	loosdrecht@devalk.nl

## DISCLAIMER

These particulars are given in good faith as supplied but cannot be guaranteed.



# SUPPORT VESSEL RAUWDOUWER

## GENERAL

Model	SUPPORT VESSEL RAUWDOUWER
Type	motor yacht
LOA (m)	24,80
Beam (m)	5,50
Draft (m)	2,20
Air draft (m)	8,80
Air draft min (m)	6,80
Headroom (m)	2,00
Year built	1976
Builder	Scheepswerf Schouten Muiden
Country	The Netherlands
Displacement (t)	78
Ballast (tonnes)	
CE norm	NA
Hull material	steel
Hull colour	blue
Superstructure material	steel
Rubbing strake	steel
Deck material	steel
Deck finish	non-skid paint
Antifouling (year)	Nov 2019
Window frame	aluminium
Window material	double glazing
Insulation	glasswool
Radar arch	
Mast can be lowered	manual
Fuel tank (litre)	steel 2x 3000L
Level indicator (fuel tank)	Lead measurement
Fuel daytank (litre)	steel 1X 200L
Freshwater tank (litre)	steel 2800L



Blackwater tank (litre)	steel 2X 2300L
Wheel steering	hydraulic

## ACCOMMODATION

Cabins	2
Berths	4
Interior	Wood
Floor	wood
Pilot house	yes
Headroom saloon (m)	2
Heating	central heating Kabola
Chart table	yes
Dinette	yes
Opening door to cockpit	yes
Galley	yes
Countertop	
Sink	stainless steel
Cooker	calor gas
Microwave	yes
Fridge	Zanussi
Freezer	Zanussi
Hot water system	on central heating 2X Boiler
Water pressure system	electrical
Owners cabin	Sofa bed
Wardrobe	hanging/drawers/shelves
Bathroom	shared
Toilet	shared
Toilet system	electric
Wash basin	
Shower	shared
Guest cabin 1	bunk bed



Wardrobe	drawers and shelves
Bathroom	shared
Toilet	shared

## MACHINERY

No of engines	1
Make	Stork Werkspoor
Type	DRO 218
HP	450
kW	330,75
Fuel	diesel
Maximum speed (kn)	11
Cruising speed (kn)	7
Engine hours	5000
Engine cooling system	freshwater heat exchanger
Drive	shaft
Gearbox	hydraulic
Bowthruster	hydraulic DAF 120-50 KW
Exhaust	watercooled
Propeller type	fixed
Propeller blades	3
Propeller shaft material	stainless steel
Electric bilge pump	yes
Generator	Lister 3 cylinder 15kw
Running hours generator	544
Generator 2	Lister
Running hours generator 2	850
Batteries	650AH
Generator battery	yes
Bowthruster battery	yes
Battery charger	Mastervolt



Inverter	Victron Energy
Shorepower	with cable

## NAVIGATION

Compass	yes
Depth sounder	Lowrance
Log	GPS NSR
VHF	2X NSR NVR-1000
Rudder angle indicator	yes
Radar/GPS/plotter	One old fashion and one digital new
Navtex	NSR
AIS receiver	NSR NSI-1000 UAIS
Searchlight	2x

## EQUIPMENT

Gangway	yes
Anchor chain	146KG 50M
Windlass	hydraulic
Deck wash	yes
Sea railing	steel
Railing side opening gates	yes
Wiper	yes
Horn	
TV	Philips
Radio-cd player	Yamaha
Fire extinguisher	12 Bar waterpump installation

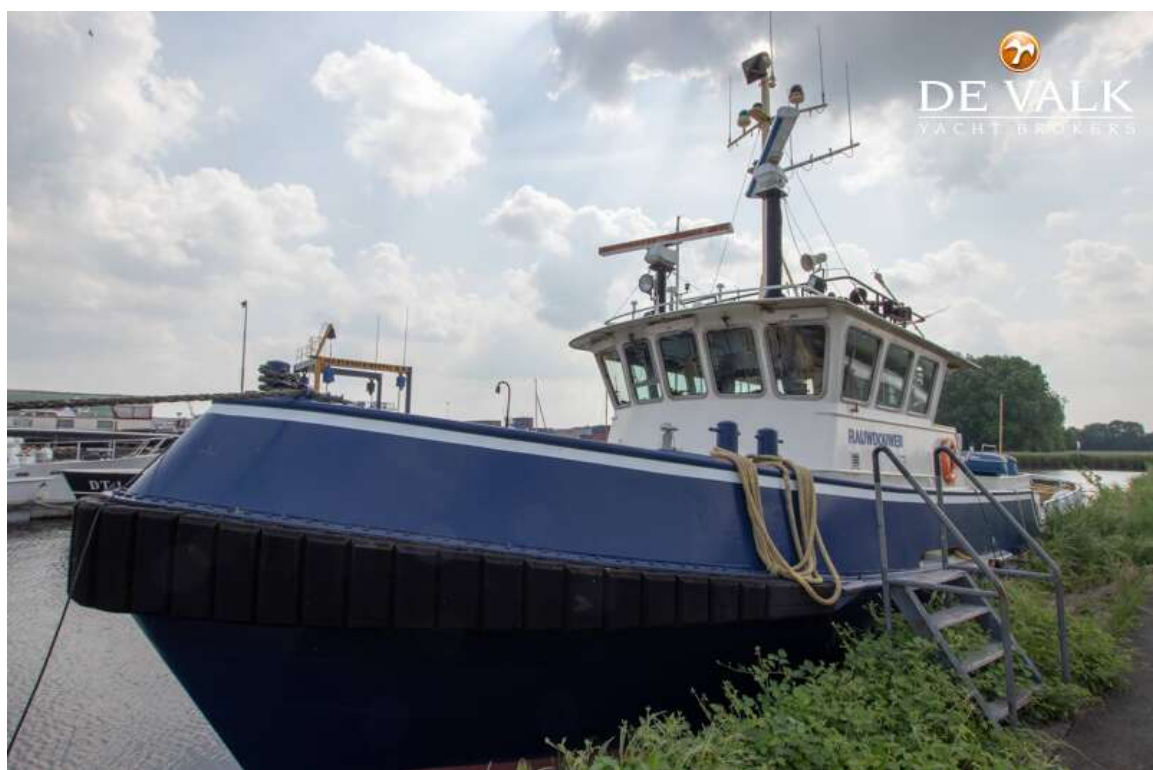
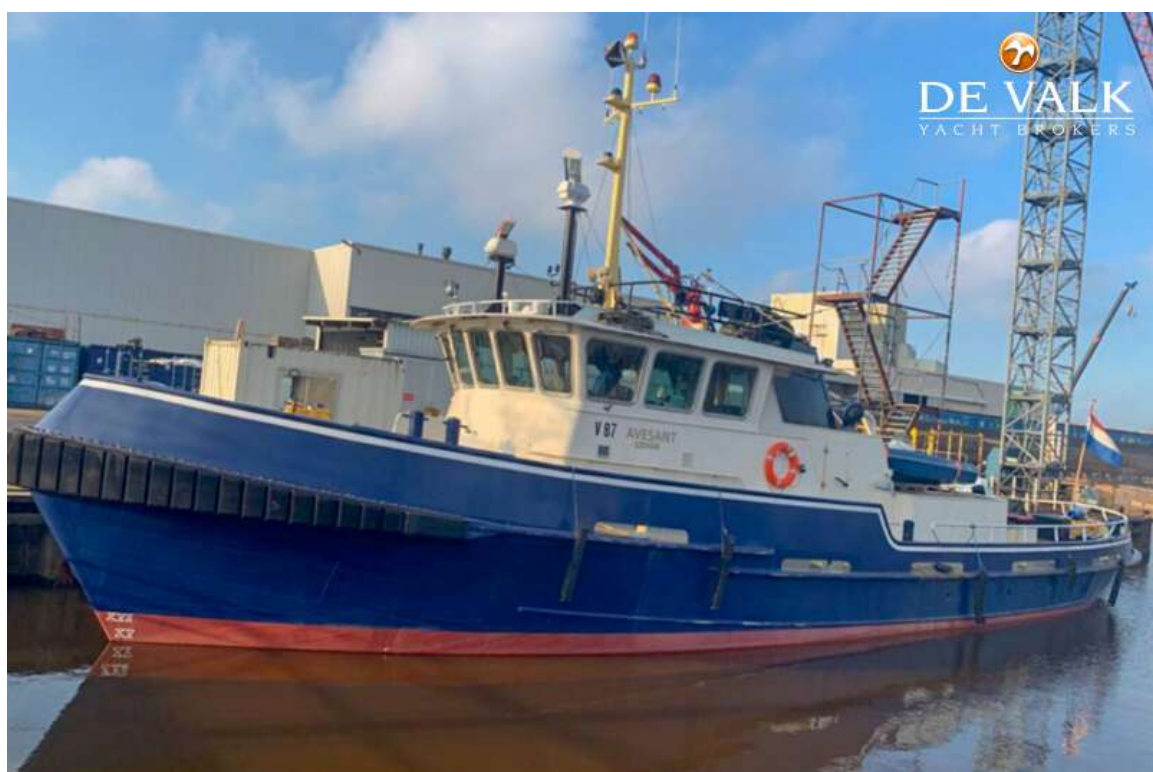


# SUPPORT VESSEL RAUWDOUWER





# SUPPORT VESSEL RAUWDOUWER





# SUPPORT VESSEL RAUWDOUWER



# SUPPORT VESSEL RAUWDOUWER





# SUPPORT VESSEL RAUWDOUWER

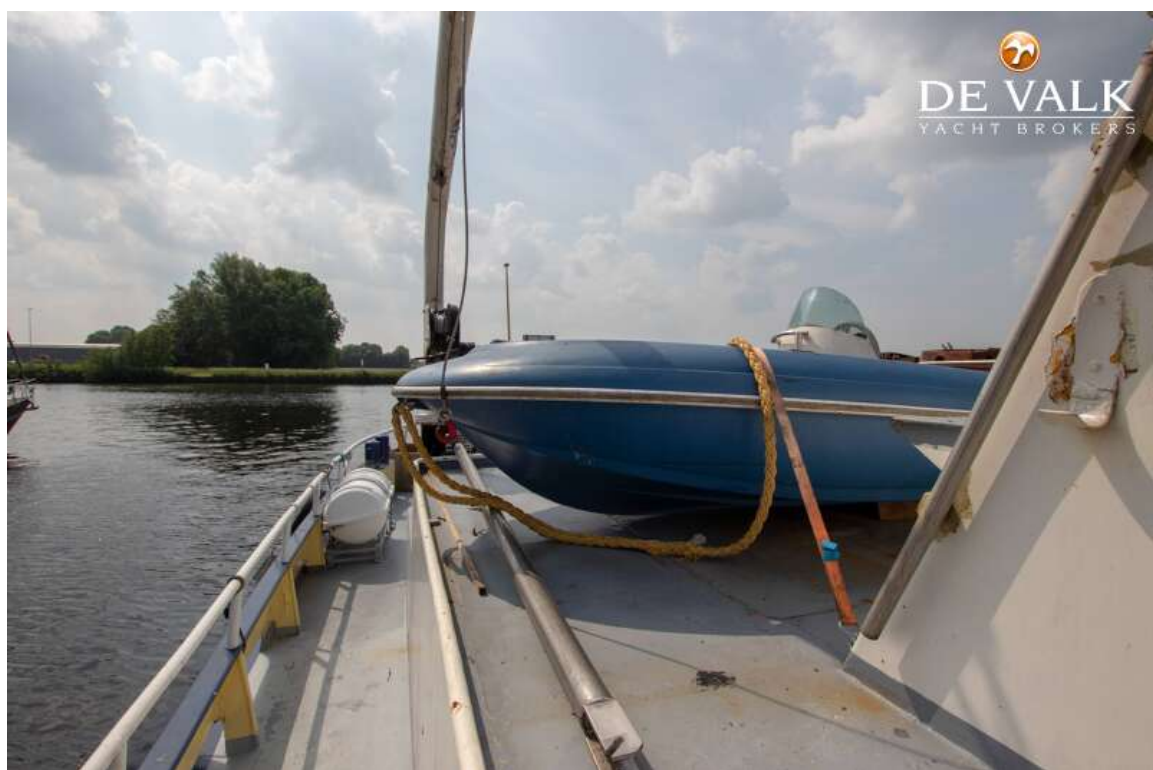
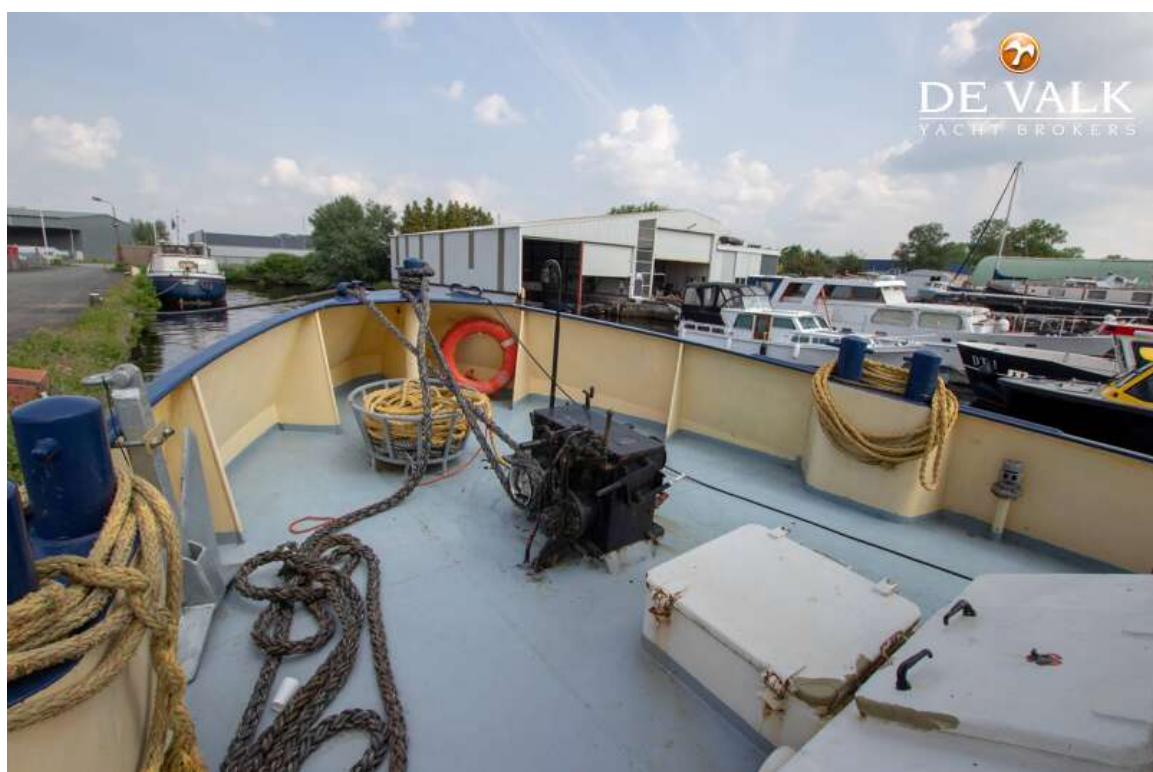


# SUPPORT VESSEL RAUWDOUWER





# SUPPORT VESSEL RAUWDOUWER



# SUPPORT VESSEL RAUWDOUWER



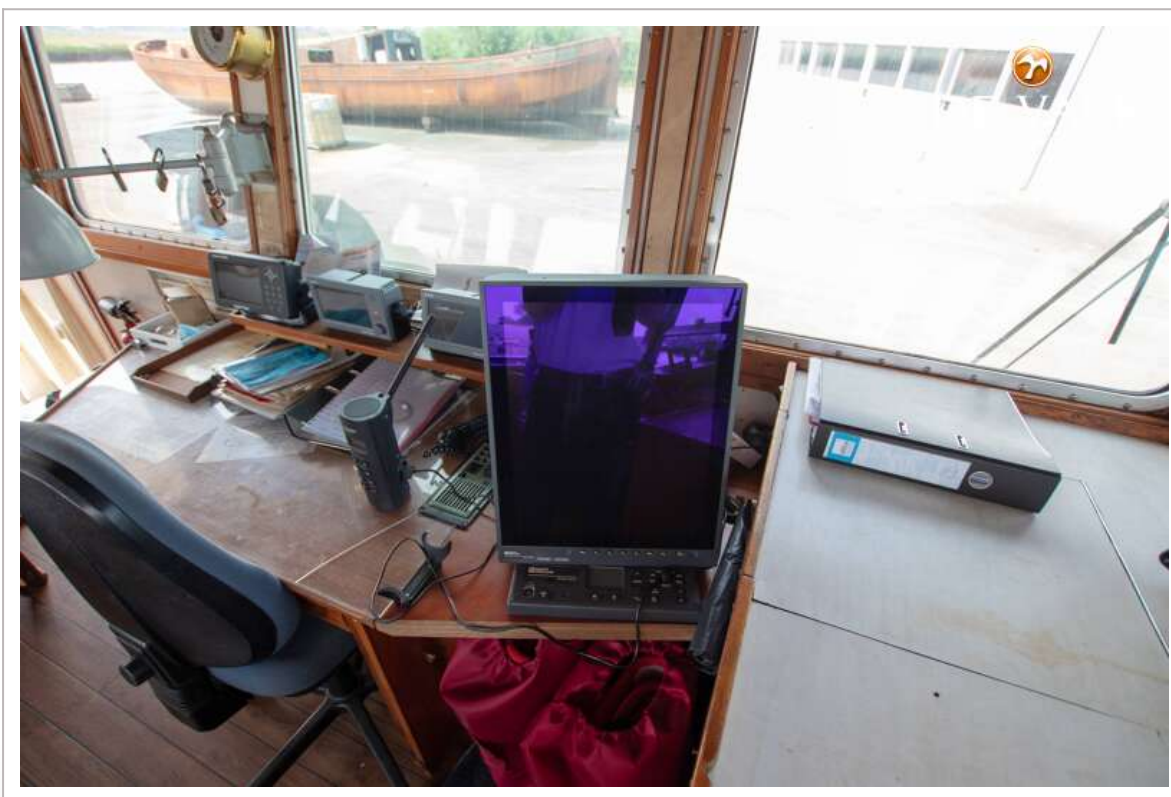
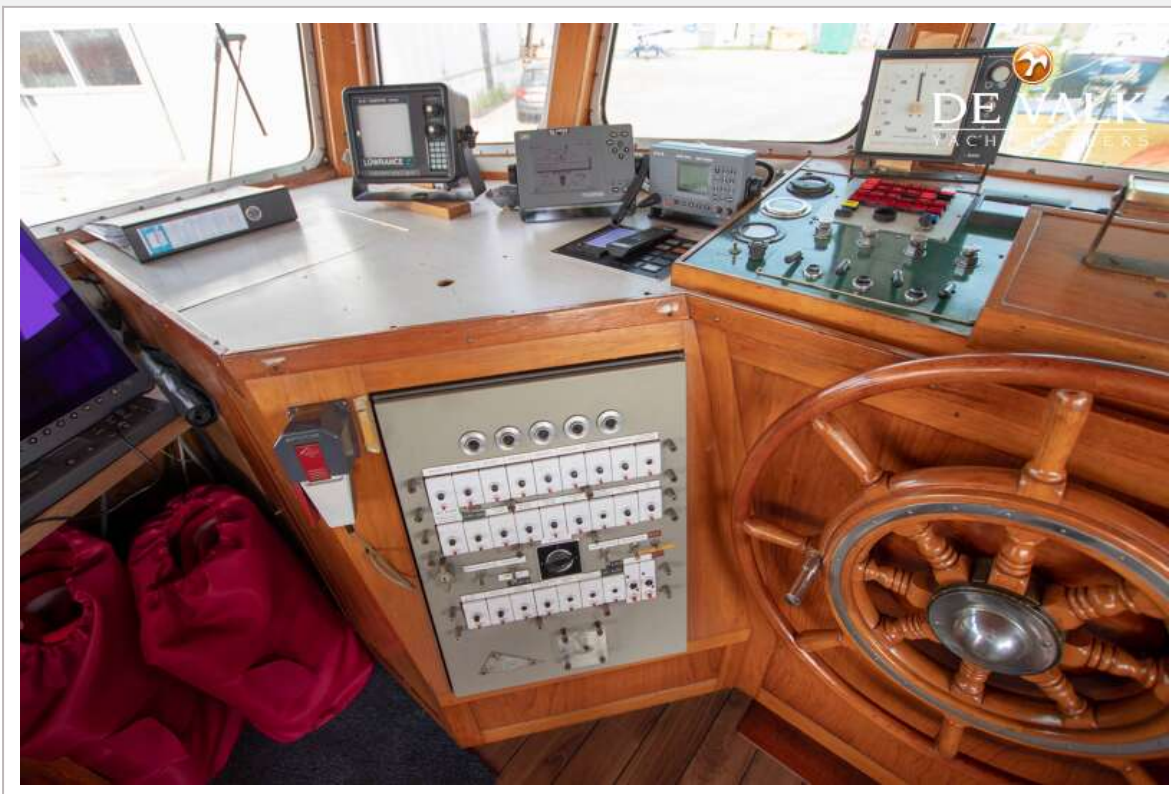


# SUPPORT VESSEL RAUWDOUWER

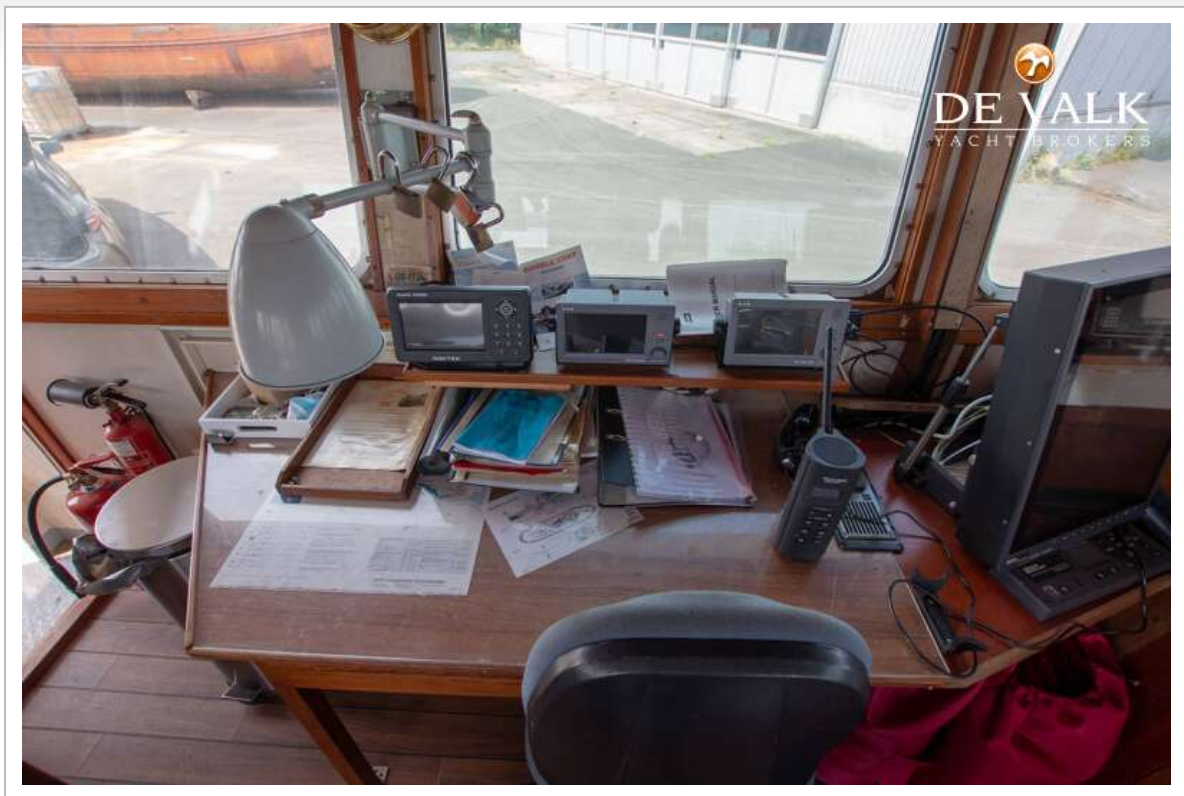




# SUPPORT VESSEL RAUWDOUWER

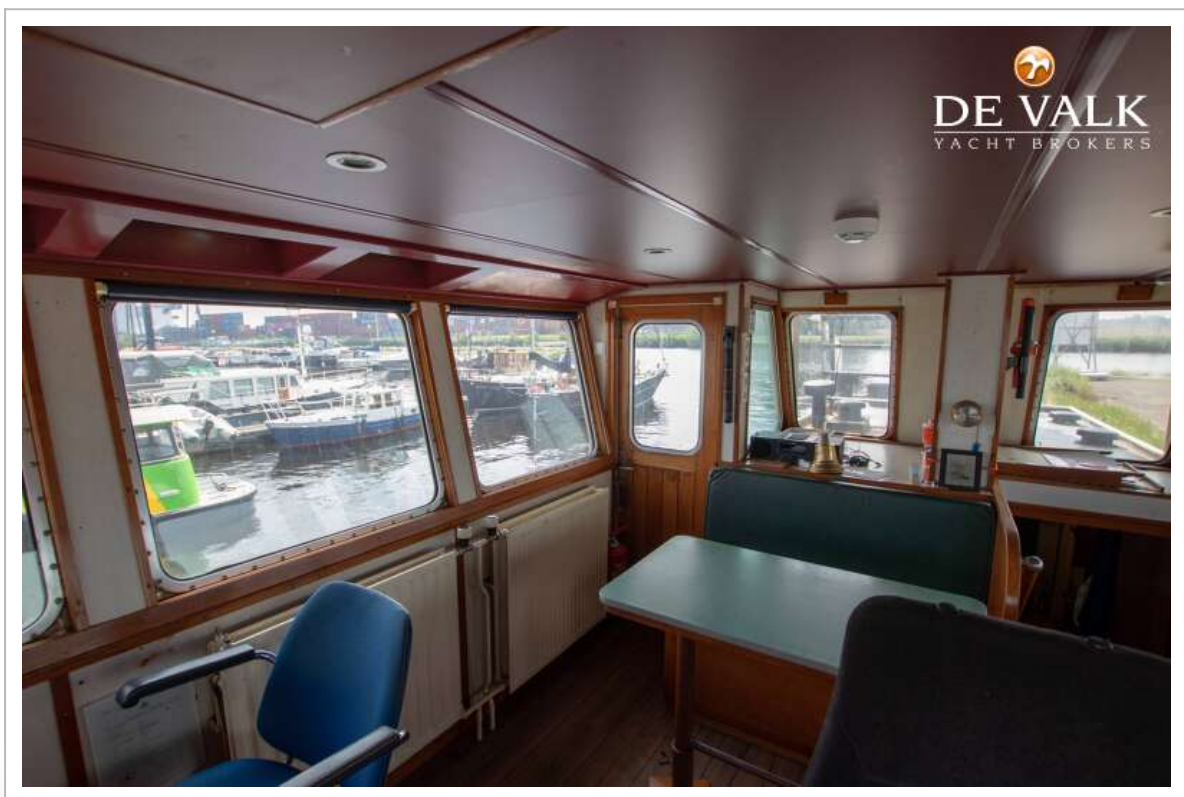
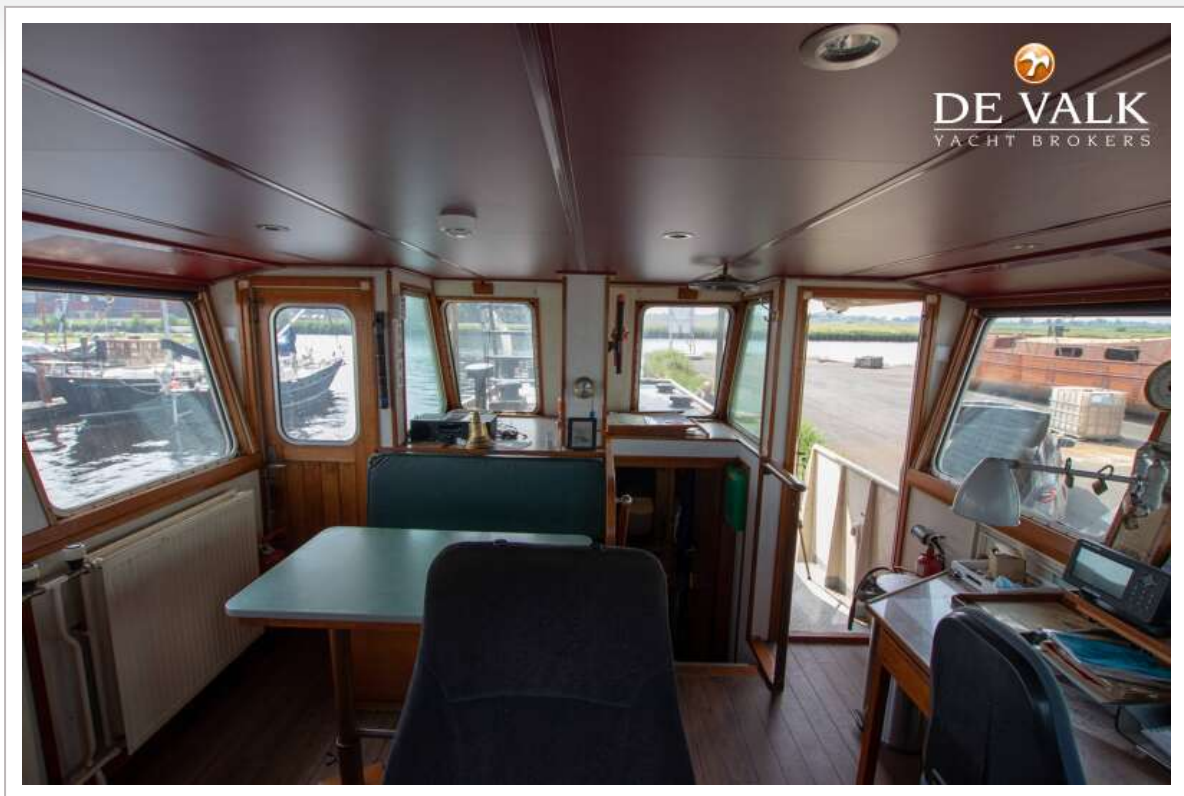


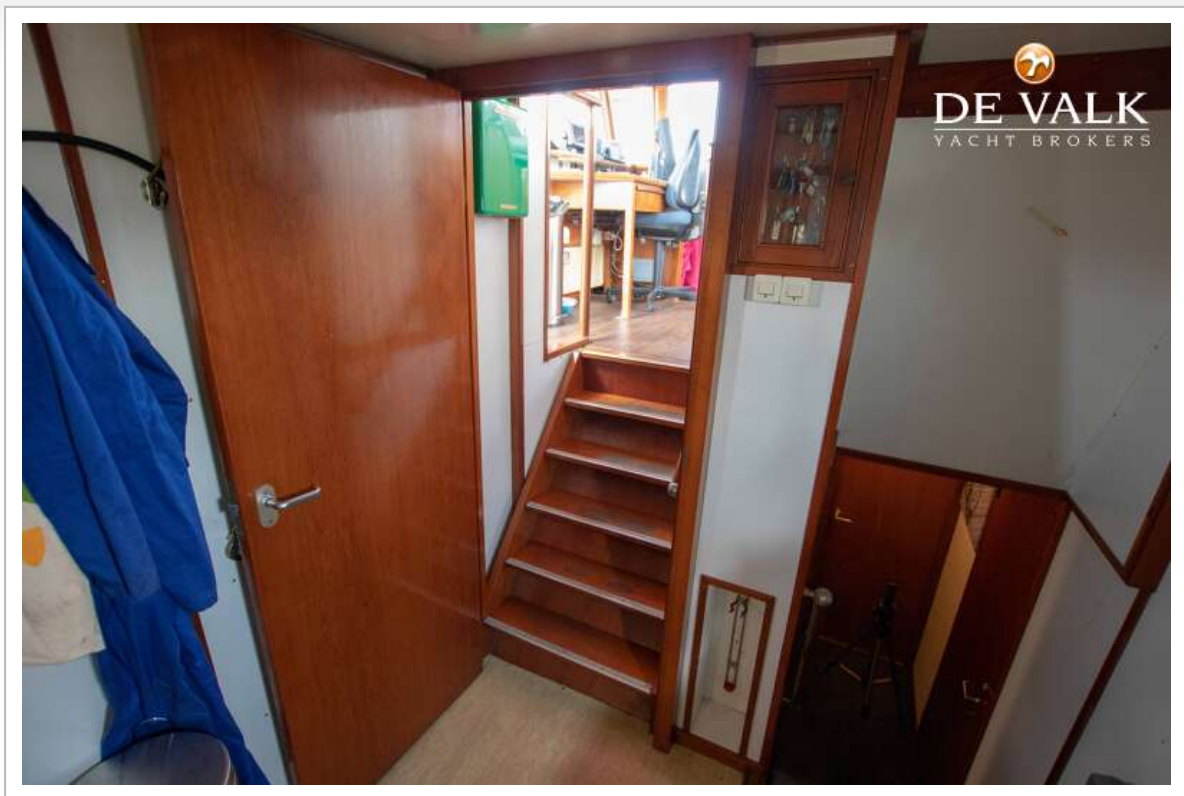
# SUPPORT VESSEL RAUWDOUWER





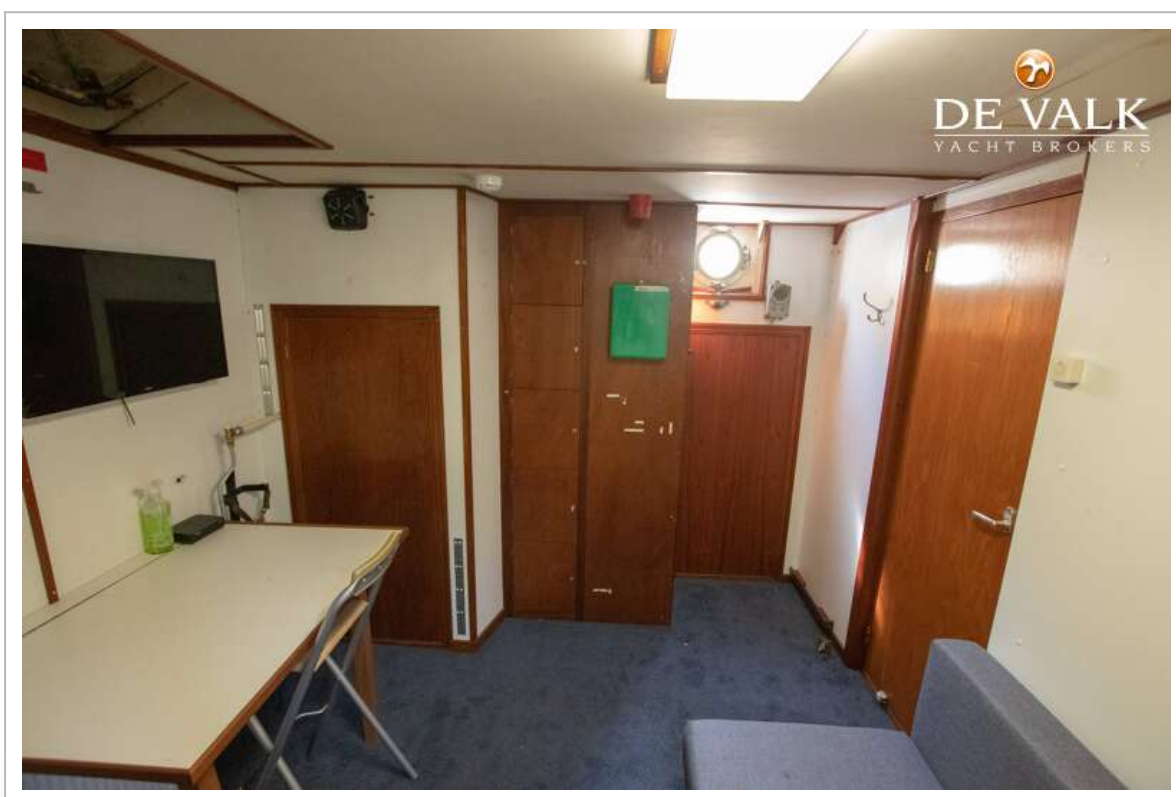
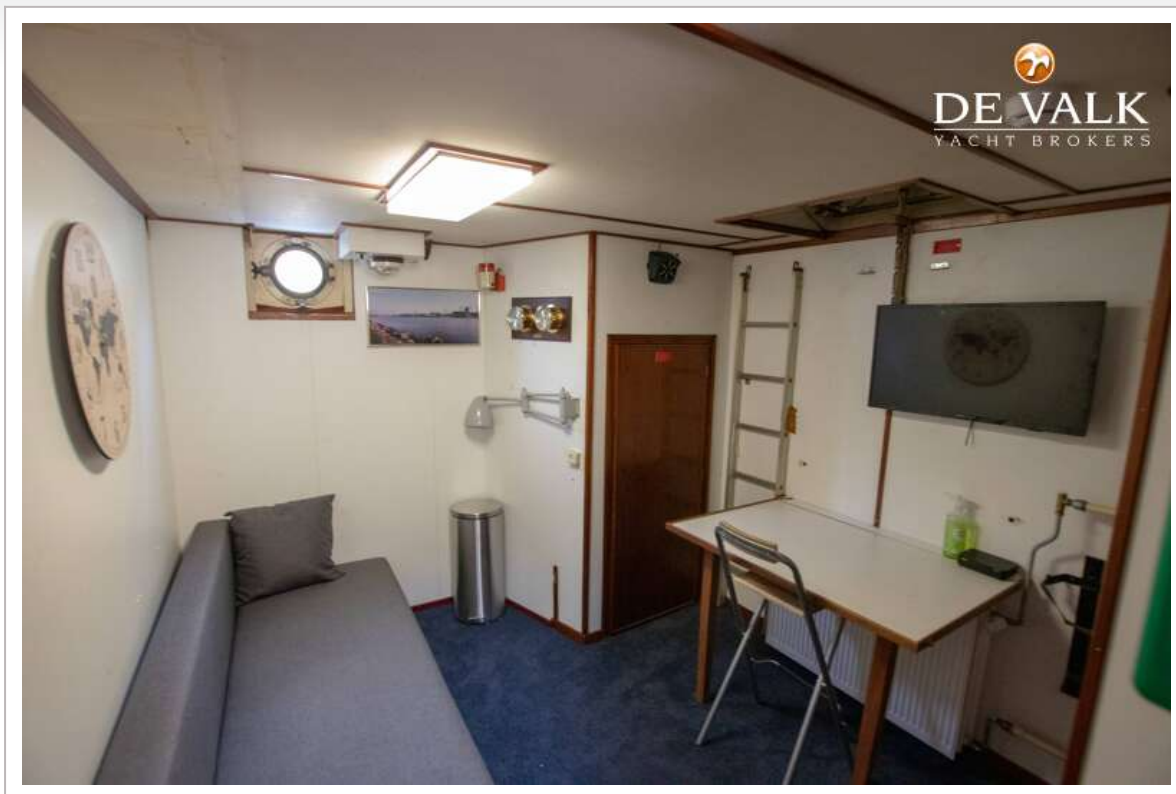
# SUPPORT VESSEL RAUWDOUWER

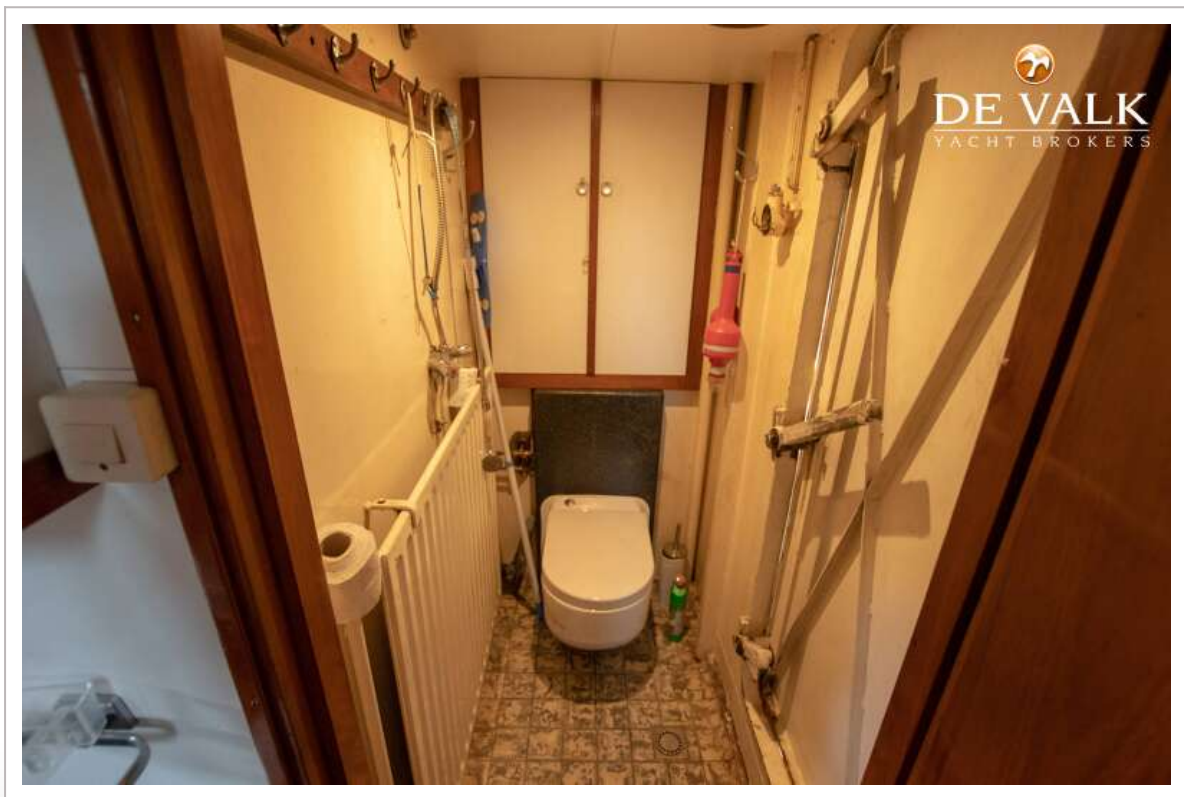
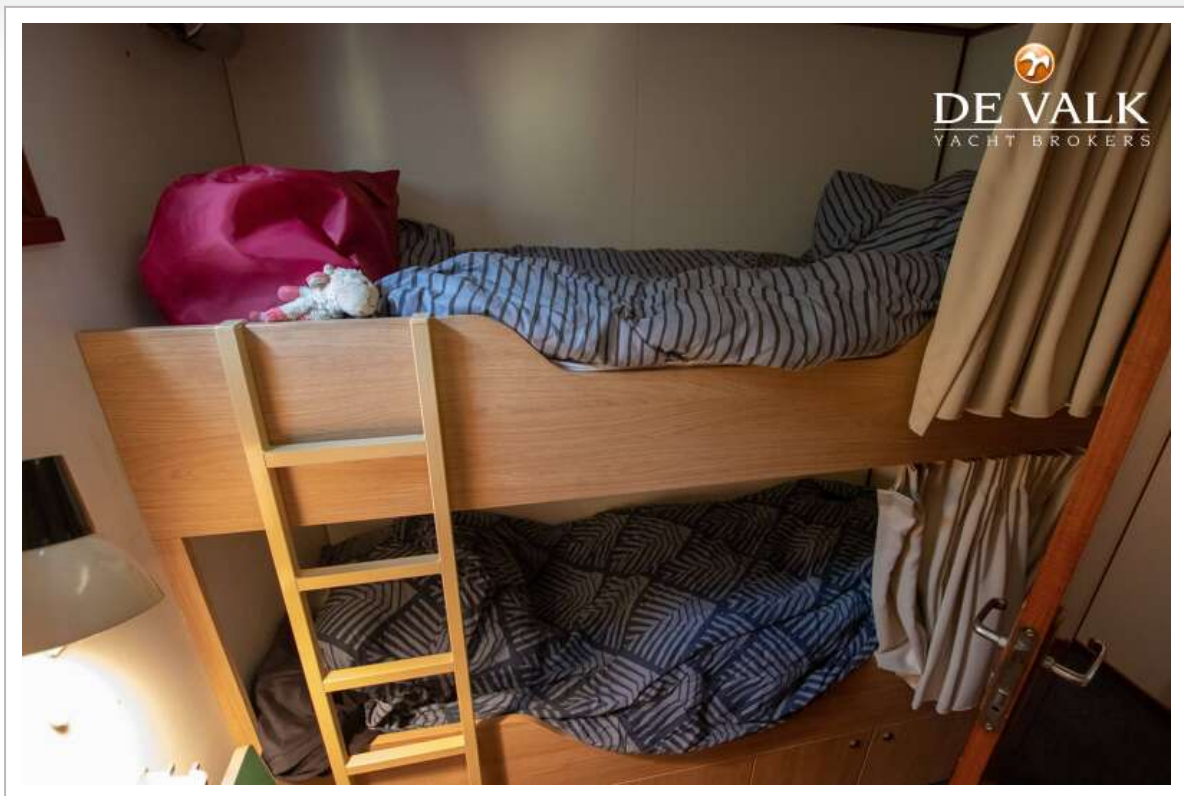






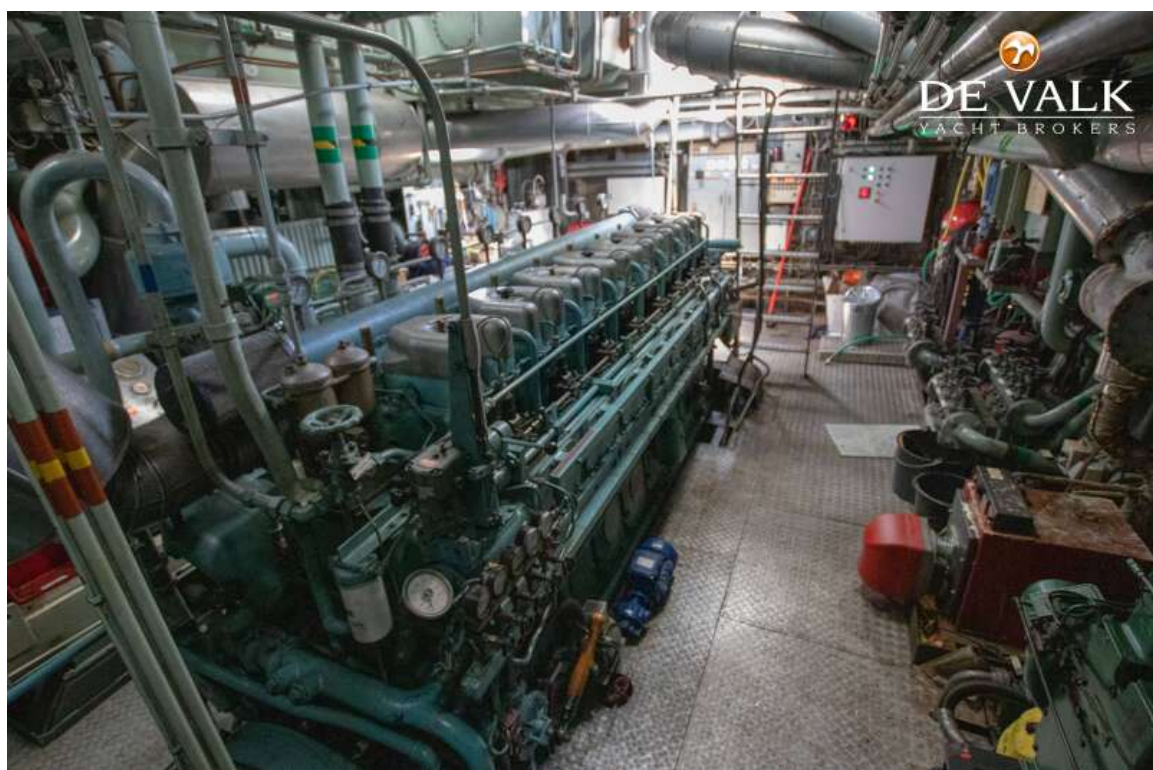
# SUPPORT VESSEL RAUWDOUWER





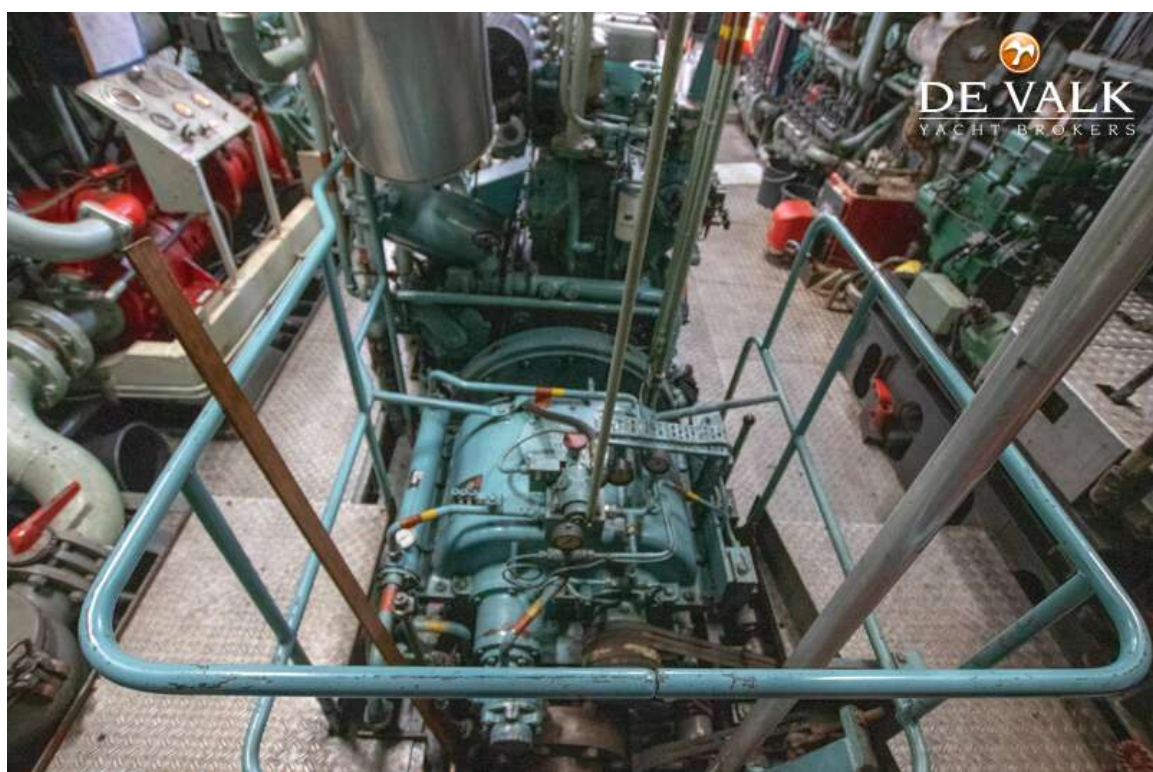


# SUPPORT VESSEL RAUWDOUWER

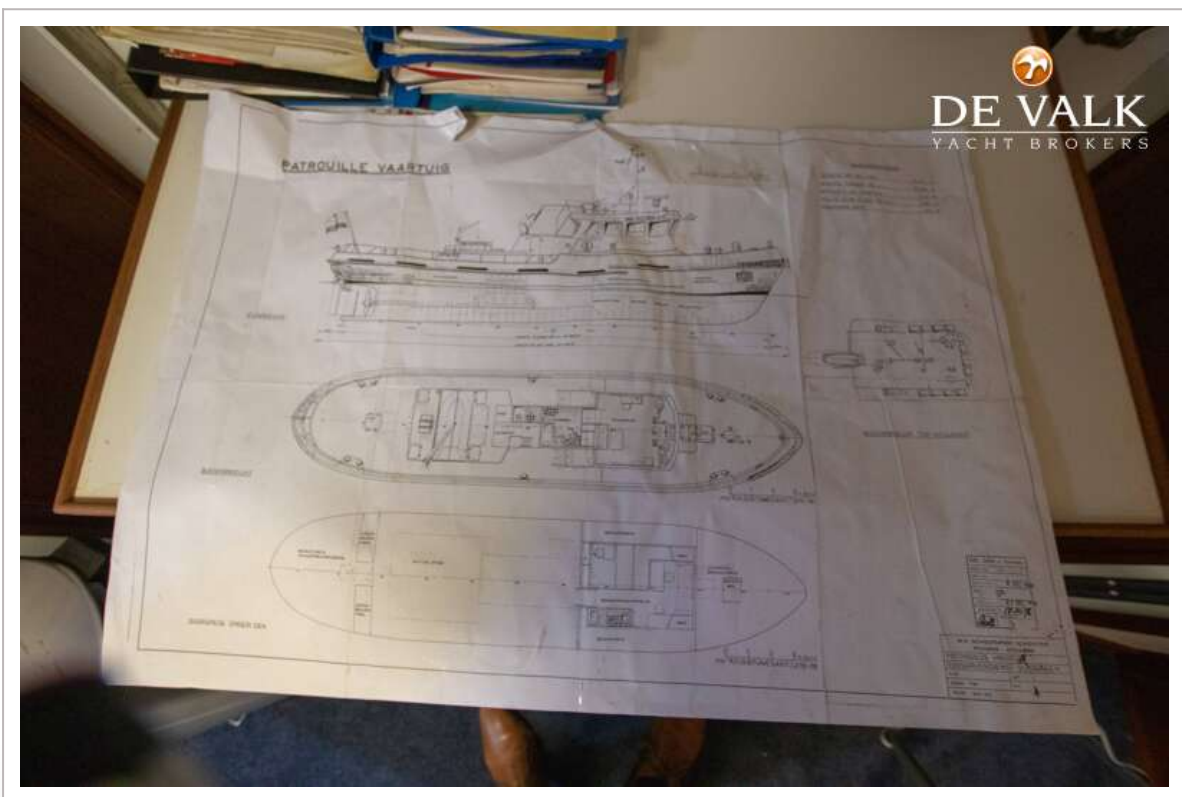




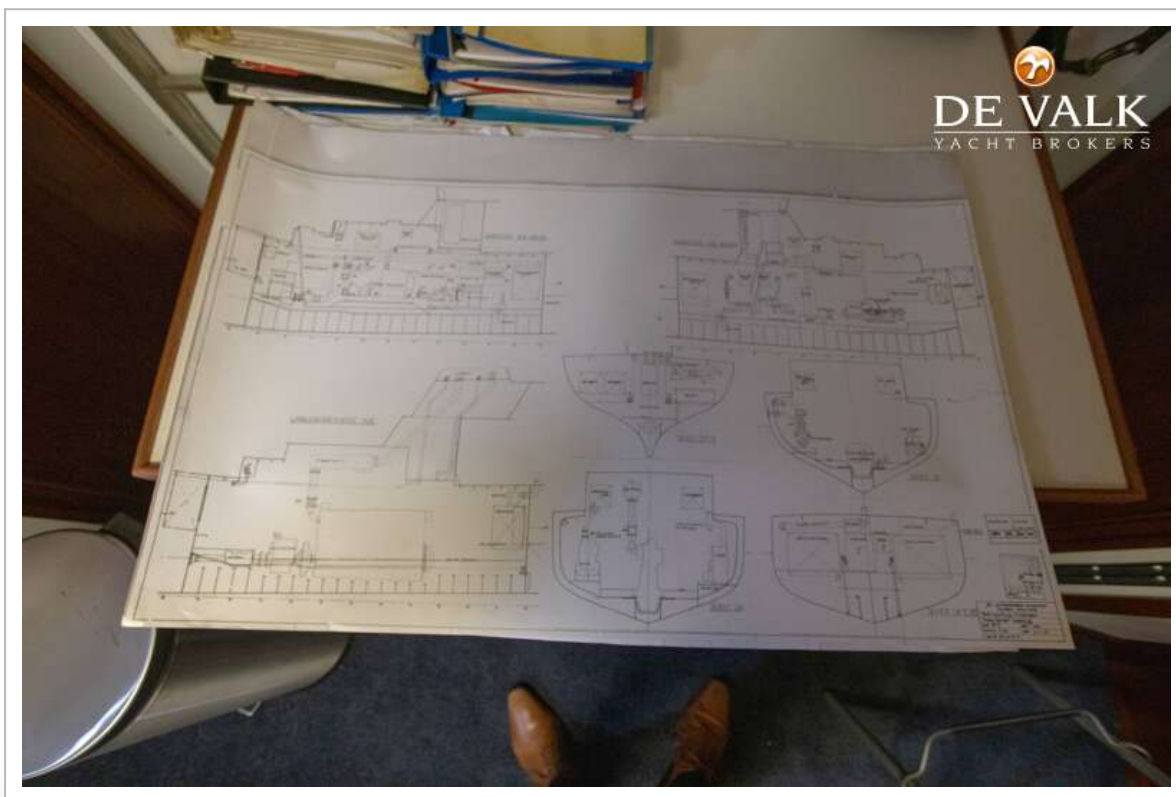
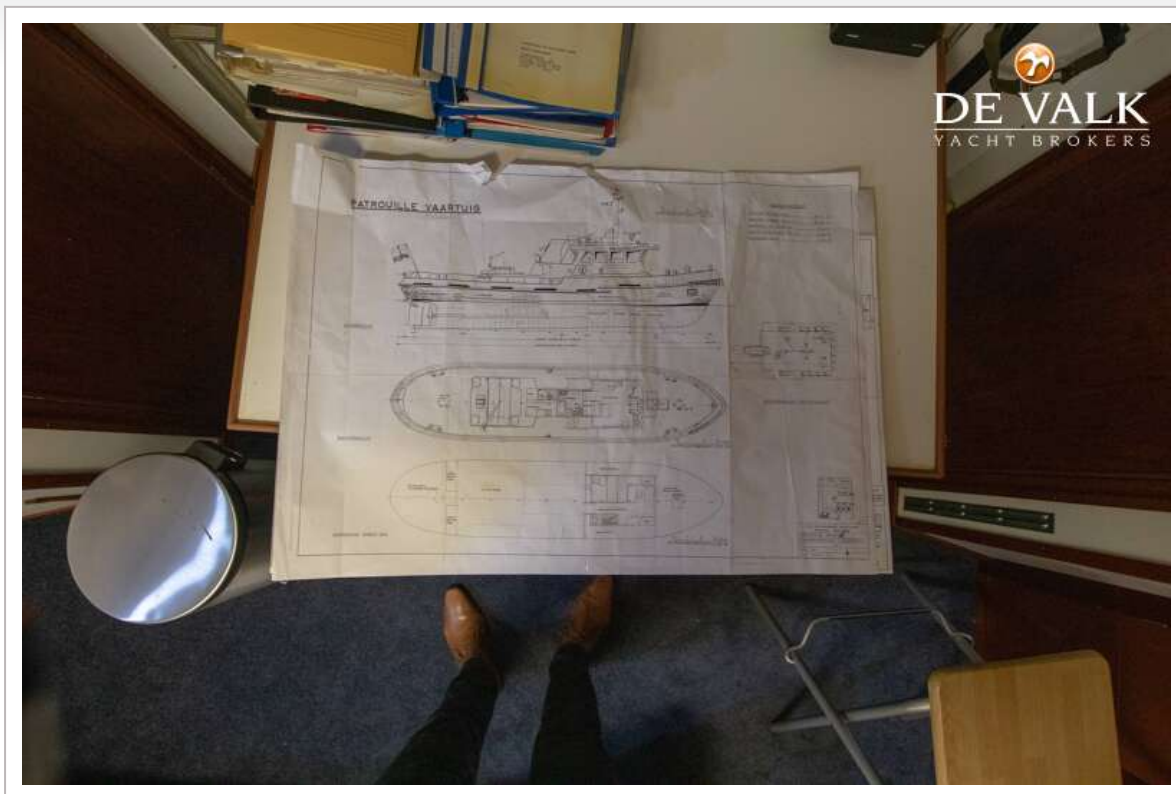
# SUPPORT VESSEL RAUWDOUWER



# SUPPORT VESSEL RAUWDOUWER







# SUPPORT VESSEL RAUWDOUWER

