



DE VALK  
YACHT BROKERS



## BAVARIA 36 CRUISER



DE VALK  
YACHT BROKERS

# BAVARIA 36 CRUISER

## BROKER'S COMMENTS

The Bavaria 36 Cruiser 3 cabin, arguably the most successful Bavaria Yachtbau ever built. The Bavaria has had a complete refit in 2018, new rigging, new sails, LED lighting inside, painted woodwork, teak in the cockpit, upholstery, toilet and even the taps. The Bavaria 36 Cruiser will be auctioned on 14 October in cooperation with Schipveiling-BVA Auctions. For further details and viewing days go to: <http://bit.ly/Bavaria36Auction> Opening price of the auction EUR. 20.000,- and offers can be made from 7 October on the website of BVA Auctions.

*Arjen Hoeksma*

## SPECIFICATIONS

<b>Dimensions</b>	11.40 x 3.60 x 1.65 (m)	<b>Builder</b>	Bavaria Yachtbau
<b>Built</b>	2005	<b>Cabins</b>	3
<b>Material</b>	GRP	<b>Berths</b>	6
<b>Engine(s)</b>	1 x Volvo Penta MD2030 diesel	<b>Hp/Kw</b>	30.00 (hp), 22.05 (kw)
<b>Asking price</b>	sold (VAT )	<b>Lying</b>	at sales office

## CONTACT

<b>Sales office</b>	De Valk Loosdrecht B.V.	<b>Telephone</b>	+31 (0)35 582 90 30
<b>Address</b>	't Breukeleveense Meentje 6 1231LM Loosdrecht / Wijdmeren NL	<b>E-mail</b>	loosdrecht@devalk.nl

## DISCLAIMER

These particulars are given in good faith as supplied but cannot be guaranteed.



# BAVARIA 36 CRUISER

## GENERAL

Model	BAVARIA 36 CRUISER
Type	sailing yacht
LOA (m)	11,40
Beam (m)	3,60
Draft (m)	1,65
Year built	2005
Builder	Bavaria Yachtbau
Country	Germany
Designer	J & J Design
Displacement (t)	5,5
Ballast (tonnes)	cast iron 1,8
CE norm	A
Hull material	GRP
Hull colour	white
Keel type	fin keel
Superstructure material	GRP
Rubbing strake	aluminum
Deck material	GRP
Deck finish	non-skid moulded in
Superstructure deck finish	non-skid moulded in
Cockpit deck finish	teak
Dorades	yes
Window frame	aluminium
Window material	polycarbonate
Fuel tank (litre)	polyethylene 150L
Level indicator (fuel tank)	yes
Freshwater tank (litre)	polyethylene 300L 2 tanks
Level indicator (freshwater)	yes
Blackwater tank (litre)	GRP 60L
Wheel steering	mechanical



# BAVARIA 36 CRUISER

Outside helm position	mechanical
-----------------------	------------

## ACCOMMODATION

Cabins	3
Berths	6
Interior	mahogany
Floor	teak and holly
Open cockpit	yes
Saloon	yes
Navigation center	yes
Chart table	yes
Aft Cabin	2X
Opening door to cockpit	yes
Galley	yes
Countertop	corian
Sink	stainless steel
Cooker	calor gas
Oven	Calor Gas
Fridge	yes
Hot water system	220V + engine
Water pressure system	electrical
Owners cabin	v-bed
Wardrobe	hanging and shelves
Bathroom	shared
Toilet	
Toilet system	manual
Wash basin	in the bathroom
Shower	shared
Guest cabin 1	double bed
Wardrobe	hanging and shelves
Guest cabin 2	double bed



# BAVARIA 36 CRUISER

Wardrobe	hanging and shelves
Extra info	Woodwork repainted 2018
Extra info	Led lighting inside 2018

## MACHINERY

No of engines	1
Make	Volvo Penta
Type	MD2030
HP	30
kW	22,05
Fuel	diesel
Maximum speed (kn)	6,5
Cruising speed (kn)	5
Consumption (l/hr)	3,5
Engine hours	610
Drive	sail-drive
Saildrive seal	yes
Engine controls	bowden cable
Gearbox	mechanical
Exhaust	watercooled
Propeller type	fixed
Manual bilge pump	yes
Electric bilge pump	yes
Start battery	yes
Service battery	yes
Battery monitor	yes
Battery charger	Victron
Shorepower	with cable

## NAVIGATION

Compass	Bavaria
---------	---------



# BAVARIA 36 CRUISER

Depth sounder/log	yes
VHF	Ray50 Fistmic
Autopilot	Raymarine
GPS	Navman 5505
Navigation lights	Led 2018
Extra info	New switchboard 2018

## EQUIPMENT

Bimini	yes
Cockpit cushions	yes
Cockpit table	yes
Bathing platform	yes
Boarding ladder	aluminum
Deck shower	yes
Anchor	Winch electric Lofrans 1000W
Anchor chain	yes
Sea railing	wire
Radar reflector	yes
Fenders	yes
Mooring lines	yes
Radio-cd player	yes
Cockpit speakers	yes
Speakers in salon	yes

## RIGGING

Rigging	sloop
Standing rigging	wire
Brand mast	Seldén
Material mast	aluminium
Spreaders	2 pair
Mainsail	Quantum



# BAVARIA 36 CRUISER

Stoway mast	yes
Genoa	yes
Genoa furler	Seldén Furlex 204S
Reefing System	main in-mast furling
Backstay adjuster	mechanical
Boomvang	tackle
Genoa sheetwinches	2X Lewmar ST40
Multifunctional winches	2X Lewmar ST16
Extra info	Rigging new 2018
Extra info	New furler genoa 2018



# BAVARIA 36 CRUISER



BROKERAGE | CHARTER | BERTHS | FINANCE | INSURANCE | YACHT MANAGEMENT

**DE VALK**  
YACHT BROKERS



**This yacht will be auctioned,  
for further details please visit [www.devalk.nl](http://www.devalk.nl)**

**Dit schip zal worden geveild,  
voor meer informatie gaat u naar [www.devalk.nl](http://www.devalk.nl)**

**Dieses Schiff wird versteigert,  
für weitere informationen besuchen Sie [www.devalk.nl](http://www.devalk.nl)**

[WWW.DEVALK.NL](http://WWW.DEVALK.NL)



**DE VALK**  
YACHT BROKERS





# BAVARIA 36 CRUISER



# BAVARIA 36 CRUISER





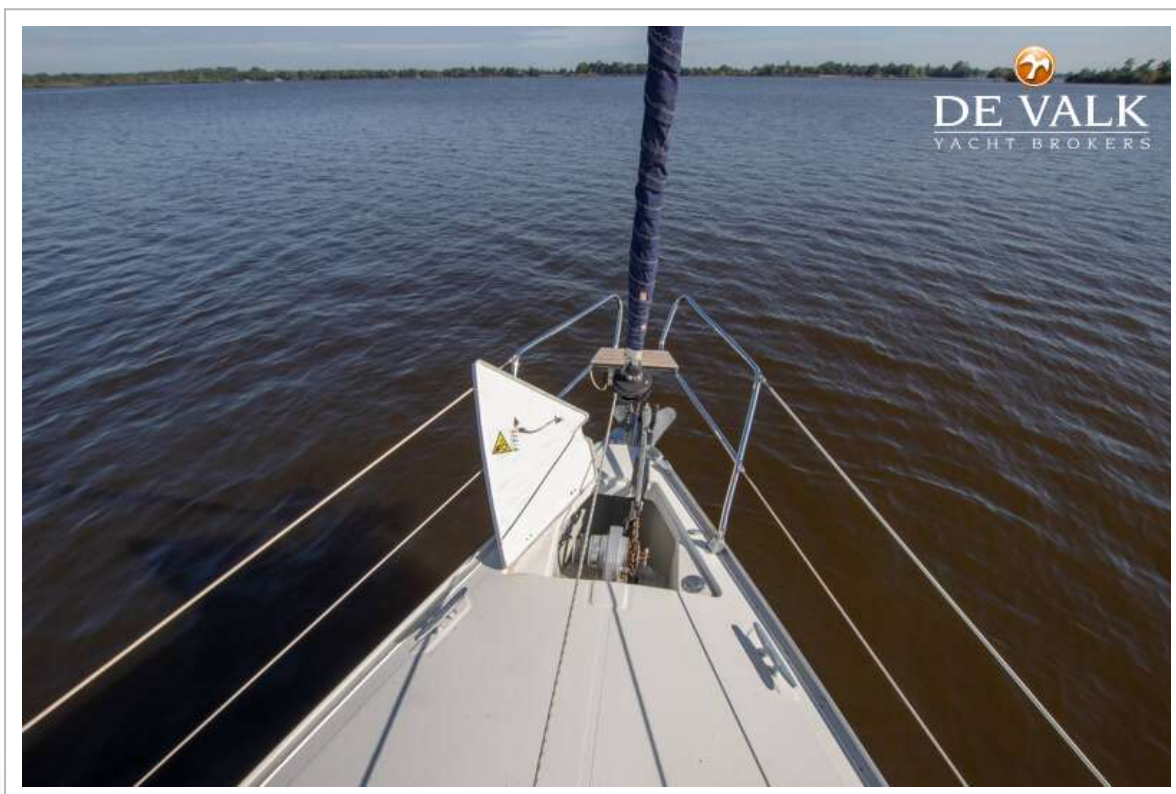
# BAVARIA 36 CRUISER



# BAVARIA 36 CRUISER



# BAVARIA 36 CRUISER





# BAVARIA 36 CRUISER

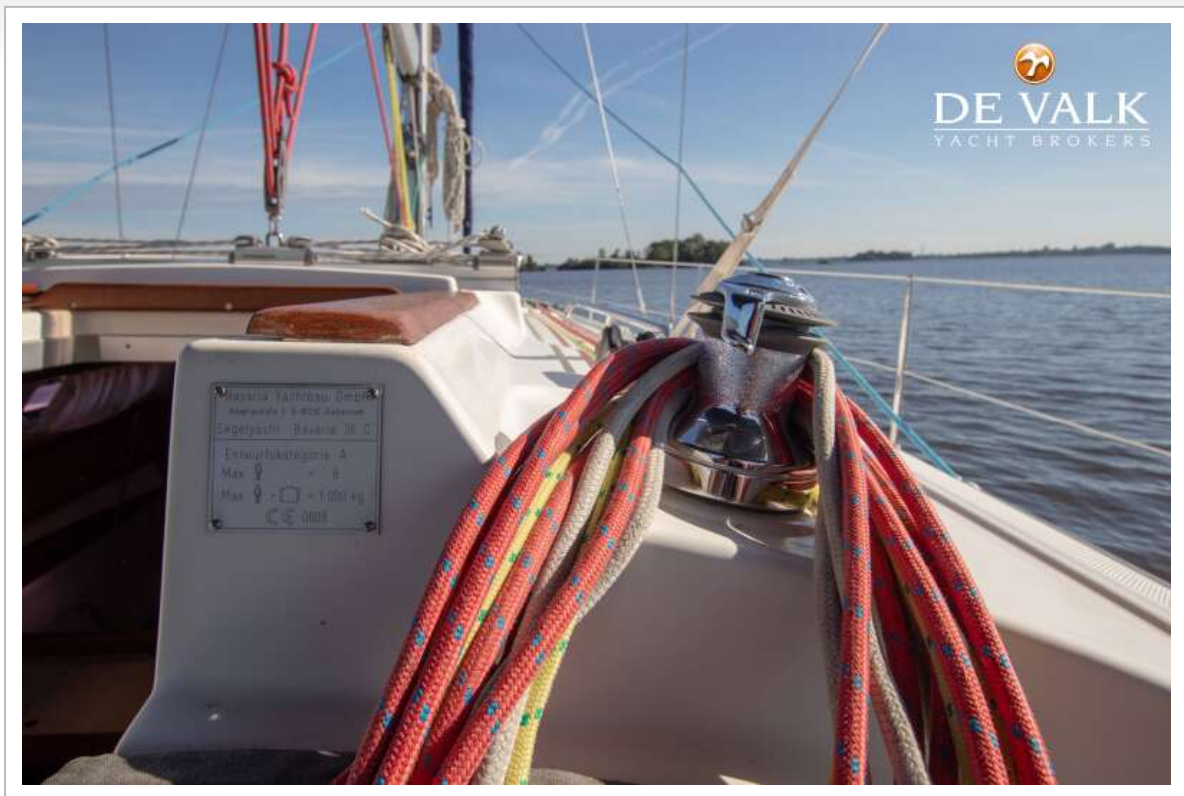


# BAVARIA 36 CRUISER



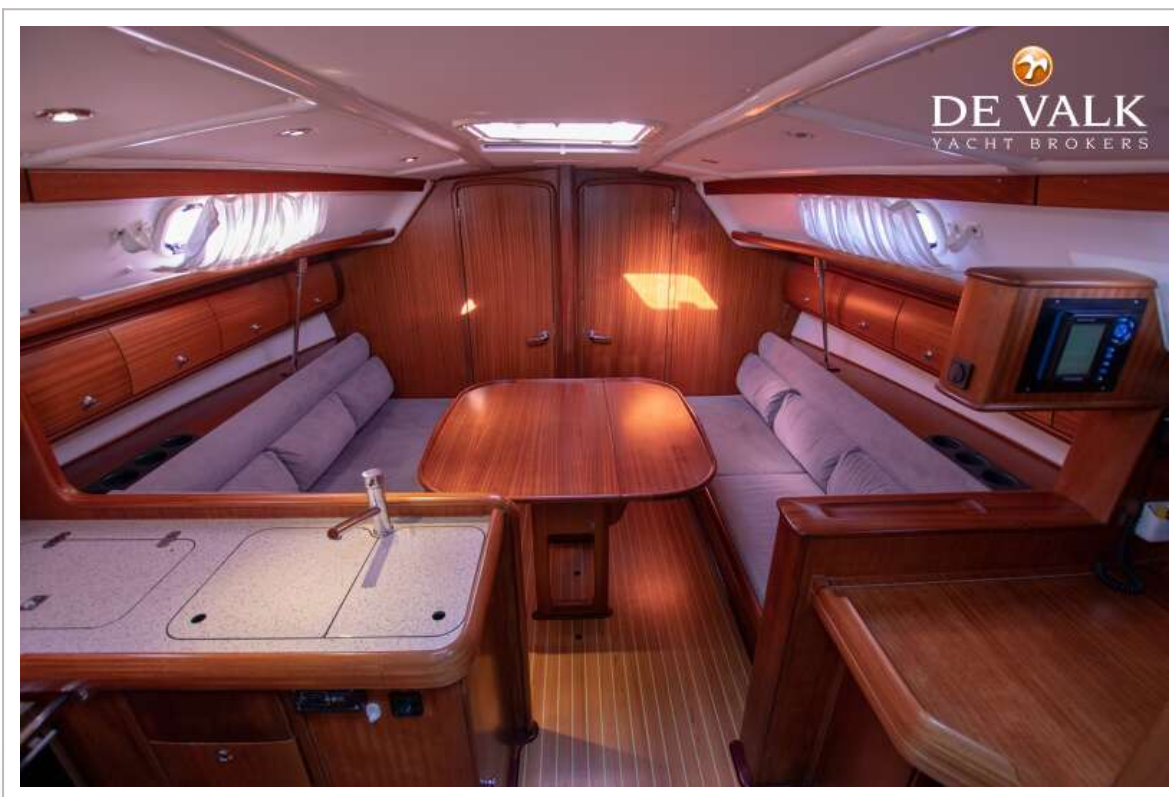
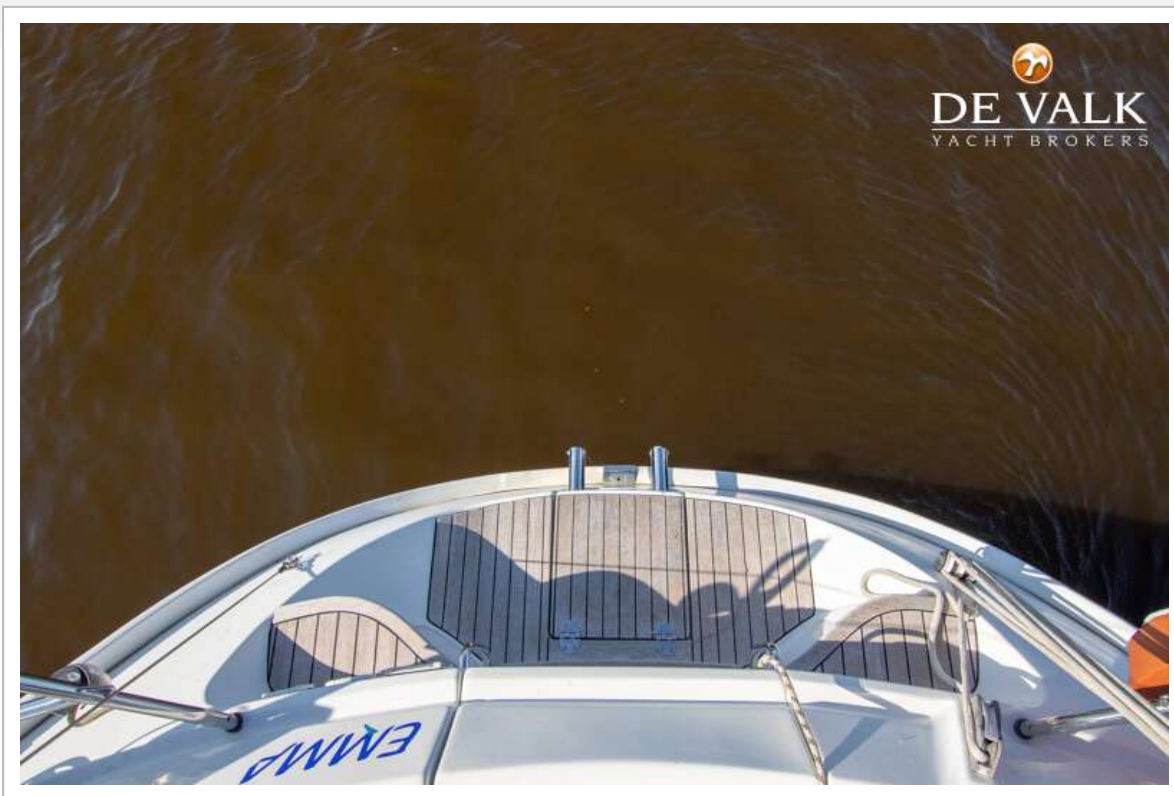


# BAVARIA 36 CRUISER





# BAVARIA 36 CRUISER



# BAVARIA 36 CRUISER

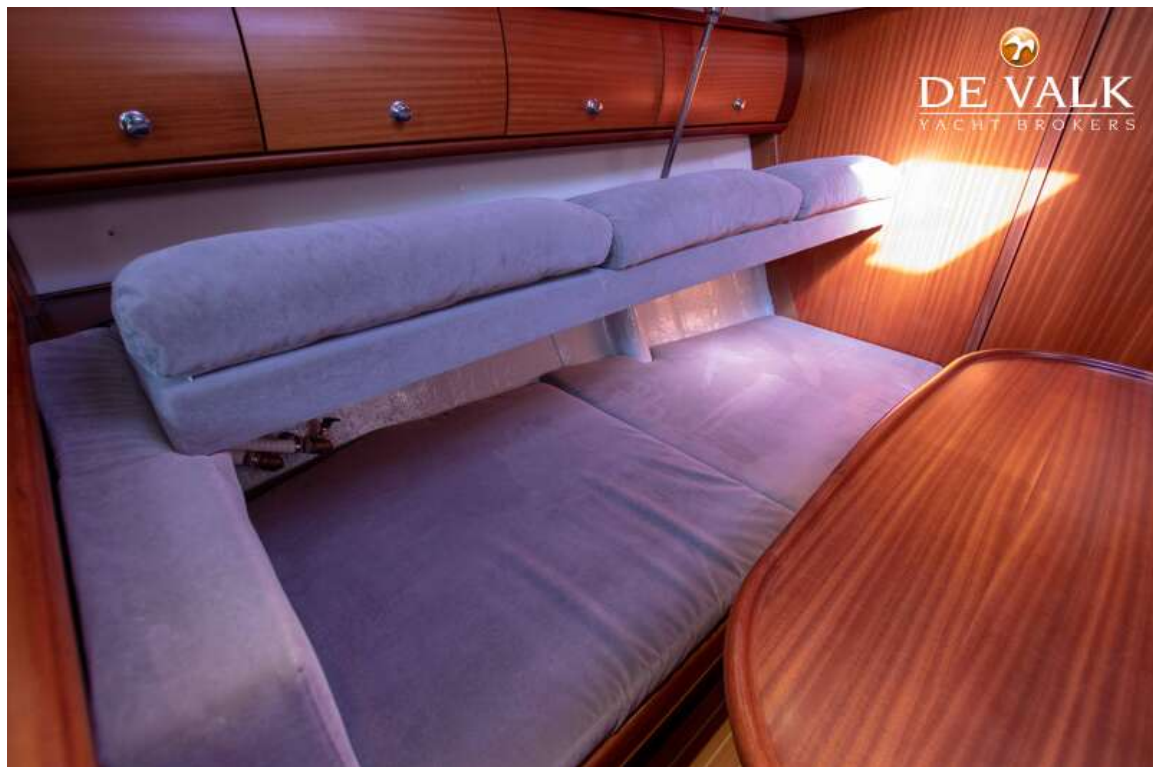




# BAVARIA 36 CRUISER



# BAVARIA 36 CRUISER

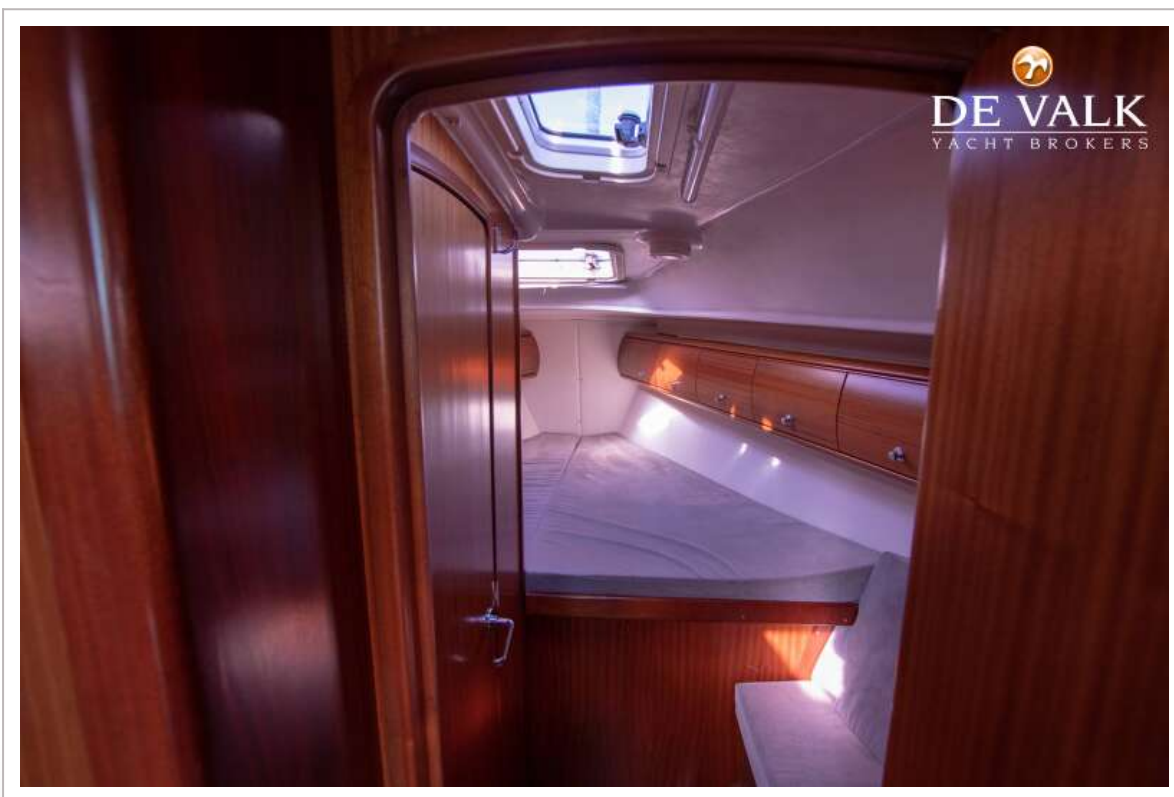




# BAVARIA 36 CRUISER

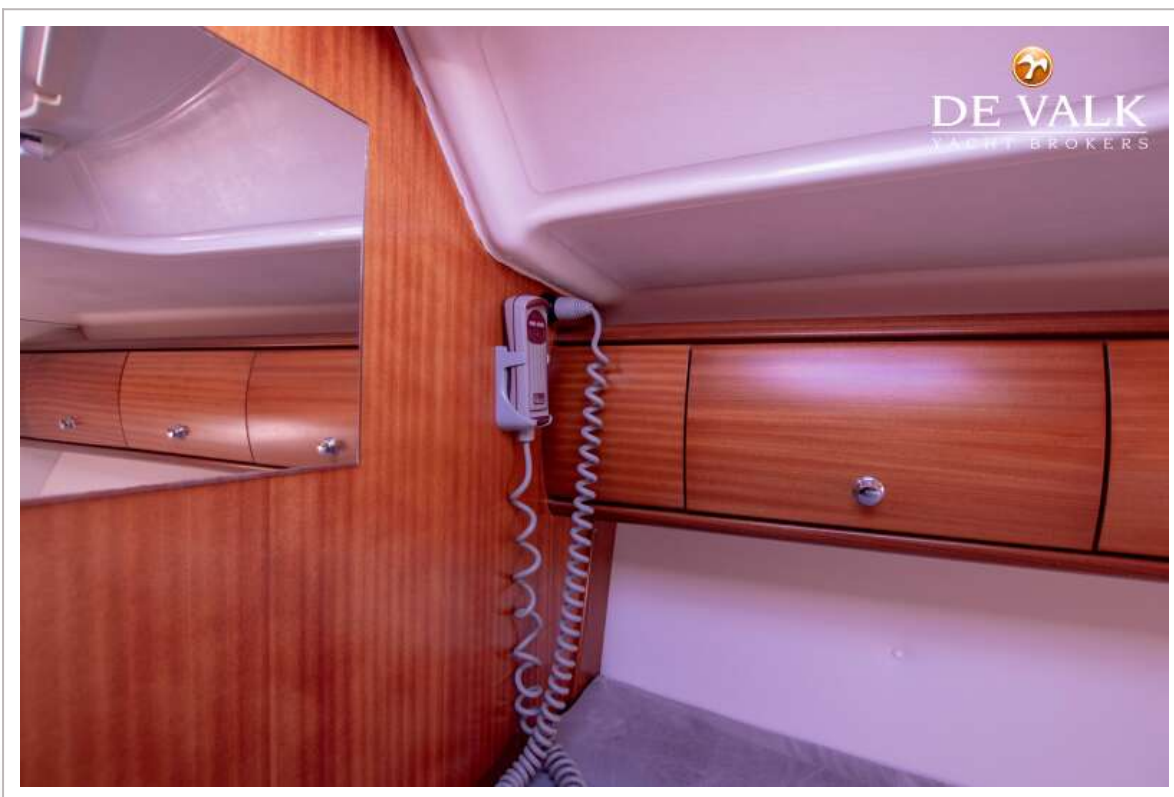


# BAVARIA 36 CRUISER

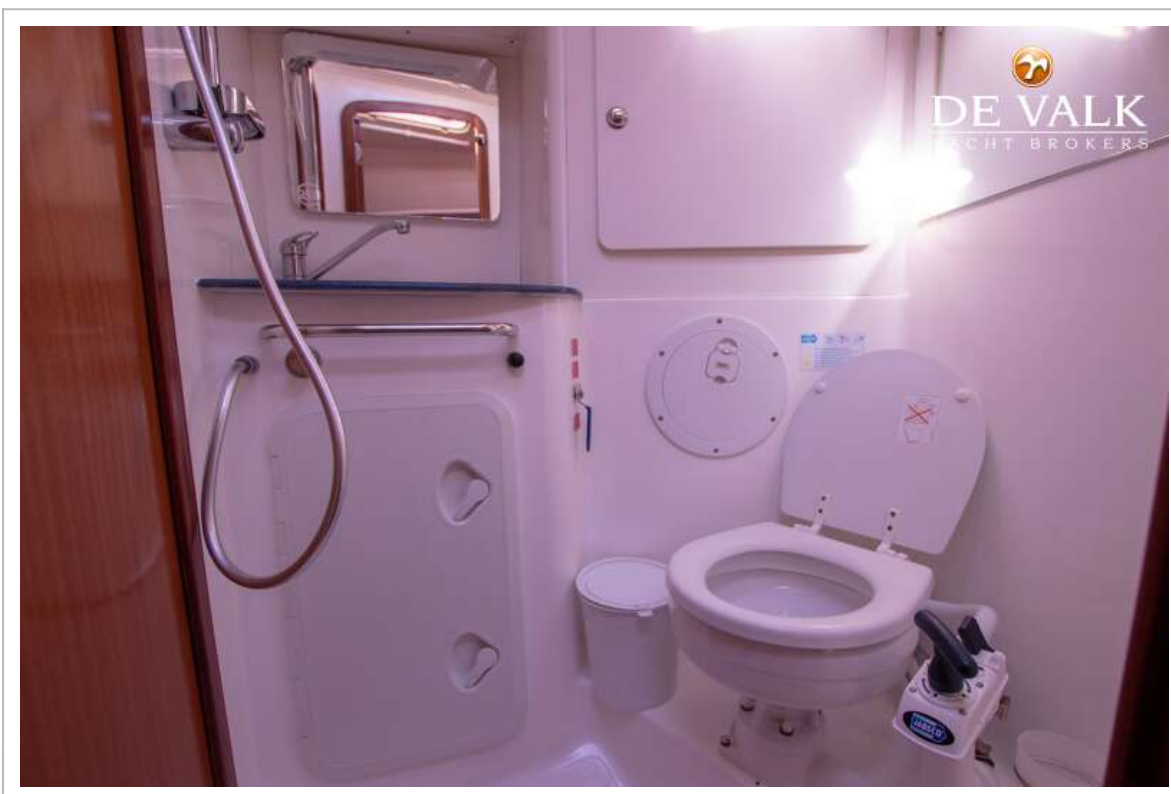
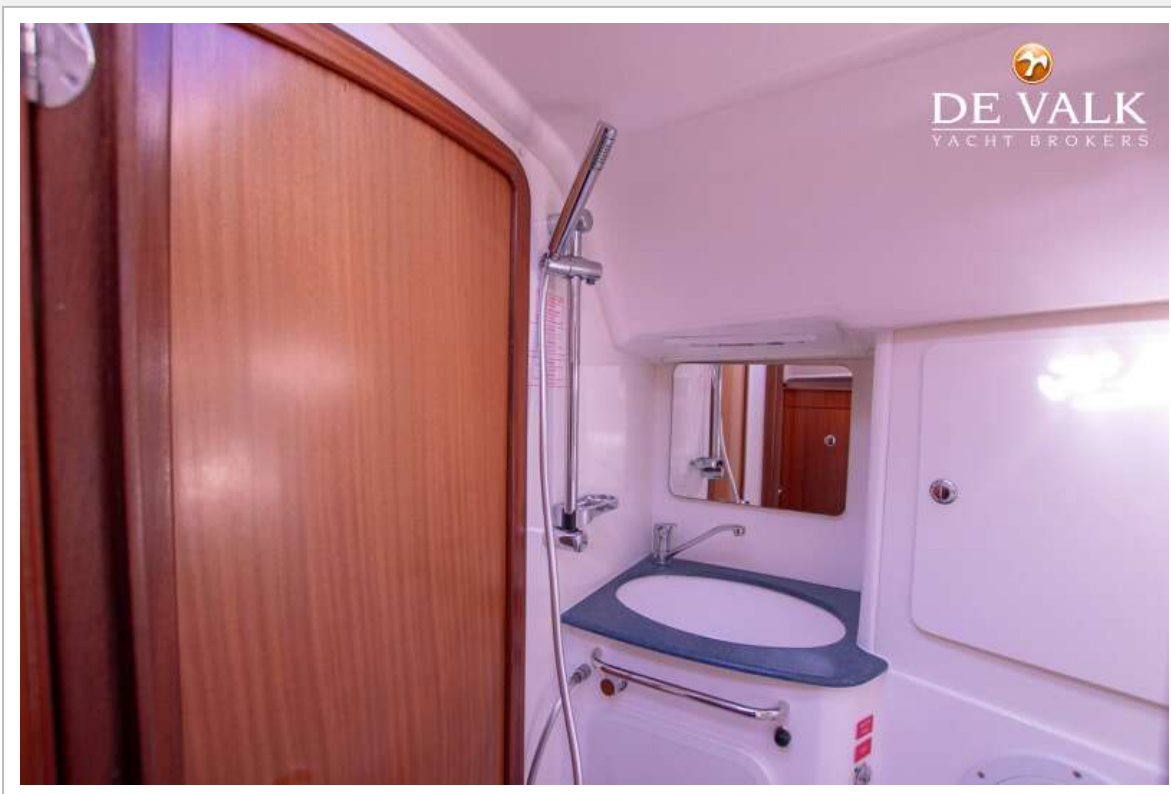




# BAVARIA 36 CRUISER



# BAVARIA 36 CRUISER





# BAVARIA 36 CRUISER



# BAVARIA 36 CRUISER

