



DE VALK
YACHT BROKERS



RIJNLANDVLET 1250 GS AK



DE VALK
YACHT BROKERS

BROKERAGE | CHARTER | BERTHS | FINANCE | INSURANCE | YACHT MANAGEMENT

RIJNLANDVLET 1250 GS AK

BROKER'S COMMENTS

This Rijnlandvlet 1250 GS AK is a sturdy, robust and beautifully lined ship built in 1991 by "de Volharding" from Zwammerdam. Due to the refit in 2012, this Rijnlandvlet offers the timeless appearance of a classic vlet and comfort to the current standard. The Rijnlandvlet is spacious with two cabins, wide saloon and dinette with galley. Extremely suitable for a longer stay on board outside the harbour thanks to the generator, powerful solar panels and a water tank of over 1000 litres.

Tom Reith

SPECIFICATIONS

Dimensions	12.50 x 4.10 x 1.35 (m)	Builder	De Volharding
Built	1991	Cabins	2
Material	Steel	Berths	6
Engine(s)	1 x Iveco 6 cyl. 8016 M 12 diesel	Hp/Kw	120.00 (hp), 88.20 (kw)
Asking price	sold (VAT)	Lying	elsewhere / Not at sales office

CONTACT

Sales office	De Valk Loosdrecht B.V.	Telephone	+31 (0)35 582 90 30
Address	't Breukeleveense Meentje 6 1231LM Loosdrecht / Wijdmeren NL	E-mail	loosdrecht@devalk.nl

DISCLAIMER

These particulars are given in good faith as supplied but cannot be guaranteed.



GENERAL

Model	RIJNLANDVLET 1250 GS AK
Type	motor yacht
LOA (m)	12,50
Beam (m)	4,10
Draft (m)	1,35
Air draft (m)	2,70
Headroom (m)	2,00
Year built	1991
Builder	De Volharding
Country	The Netherlands
Designer	De Volharding
CE norm	NA
Hull material	steel
Hull colour	green
Hull shape	round-bilged
Superstructure material	steel
Rubbing strake	fender rope
Deck material	steel
Deck finish	teak
Superstructure deck finish	non-skid moulded in
Antifouling (year)	2017
Window frame	aluminium
Window material	glass
Deckhatch	yes
Portholes	
Mast can be lowered	manual
Fuel tank (litre)	1500 +/-
Level indicator (fuel tank)	yes
Freshwater tank (litre)	1000 +/-
Level indicator (freshwater)	yes



Blackwater tank (litre)	200 +/-
Wheel steering	hydraulic 2x
Inside helm position	yes
Outside helm position	
More info on paintwork	2012 fully painted
Extra info	2012 teakdeck refit

ACCOMMODATION

Cabins	2
Berths	6
Interior	teak
Floor	carpet 2012
Aft deck	yes
Saloon	yes
Headroom saloon (m)	2,00
Heating	diesel ducted hot air Eberspracher (2012)
Aft Cabin	yes
Dinette	yes
Opening door to aft deck	yes
Galley	yes
Countertop	
Sink	stainless steel 2X
Cooker	calor gas 4-burner
Microwave	yes
Fridge	yes
Hot water system	220V + engine Boiler
Water pressure system	electrical Hydrophore
Owners cabin	French bed
Wardrobe	hanging/drawers/shelves
Bathroom	shared
Toilet	shared



Toilet system	electric
Wash basin	in the bathroom
Shower	shared
Guest cabin 1	double bed
Wardrobe	hanging/drawers/shelves
Wash basin	in the cabin

MACHINERY

No of engines	1
Make	Iveco 6 cyl.
Type	8016 M 12
HP	120
kW	88,20
Fuel	diesel
Engine cooling system	freshwater heat exchanger
Drive	shaft
Engine controls	mechanical
Gearbox	hydraulic Velvet
Bowthruster	Mechanisch
Exhaust	watercooled
Propeller shaft material	stainless steel
Electric bilge pump	yes
Generator	wet exhaust Mastervolt Whisper 3,5
Running hours generator	yes
Start battery	2X 120 amp. (2012)
Service battery	2X 230 amp. (2012)
Generator battery	1X 50 amp. (2012)
Battery monitor	Mastervolt
Battery charger/inverter	Mastervolt
Solar panel	2x 330Watt (2018)
Shorepower	with cable



Insulation transformer

Mastervolt

NAVIGATION

Compass

Scout

Depth sounder

Clipper

VHF

Navman 7200

Rudder angle indicator

Vetus

Navigation lights

yes

EQUIPMENT

Bimini

2012

Cockpit cushions

yes

Cockpit table

yes

Cockpit chairs

yes

Bathing platform

yes

Boarding ladder

stainless steel

Anchor

Pool

Anchor chain

yes

Windlass

manual Vetus

Deck wash

yes

Sea railing

stainless steel

Grab rail (superstructure)

Railing side opening gates

yes

Wiper

yes

Horn

air pressure

Fenders

yes

Mooring lines

yes

TV

LCD

Clock - barometer

yes



RIJNLANDVLET 1250 GS AK



RIJNLANDVLET 1250 GS AK



RIJNLANDVLET 1250 GS AK



RIJNLANDVLET 1250 GS AK



RIJNLANDVLET 1250 GS AK



RIJNLANDVLET 1250 GS AK



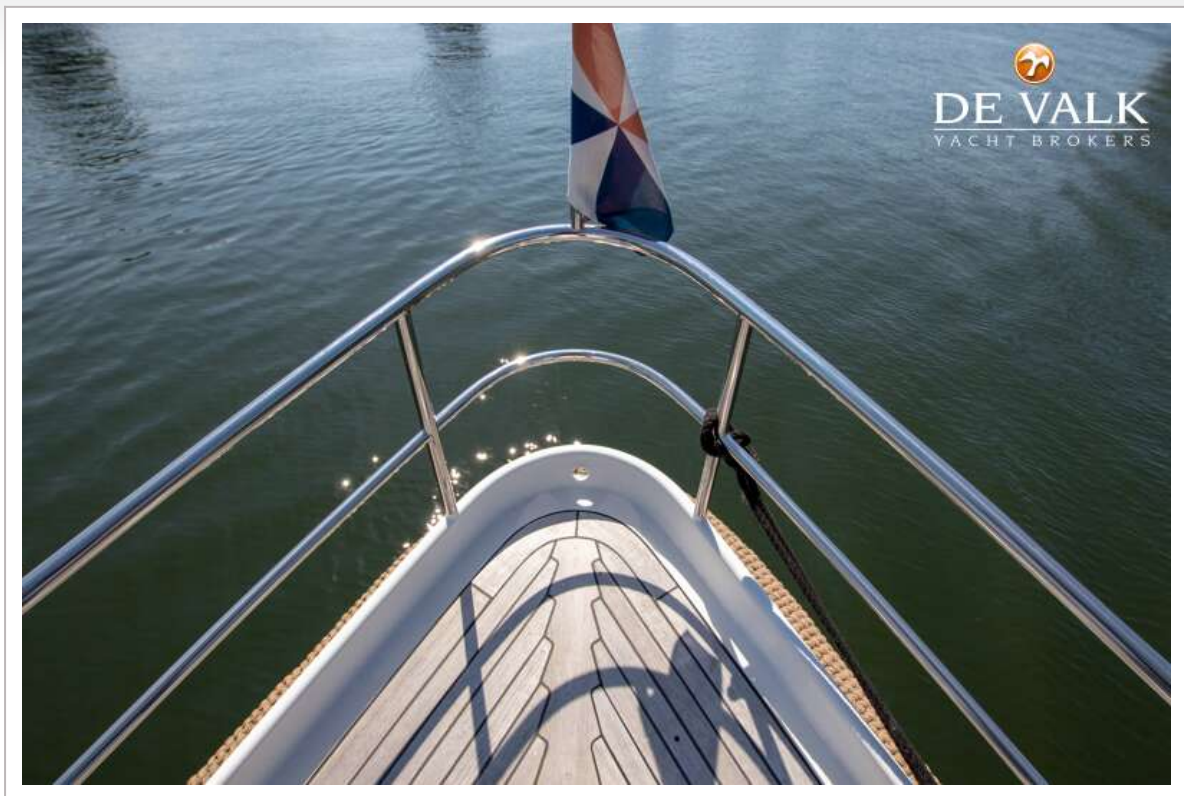
RIJNLANDVLET 1250 GS AK



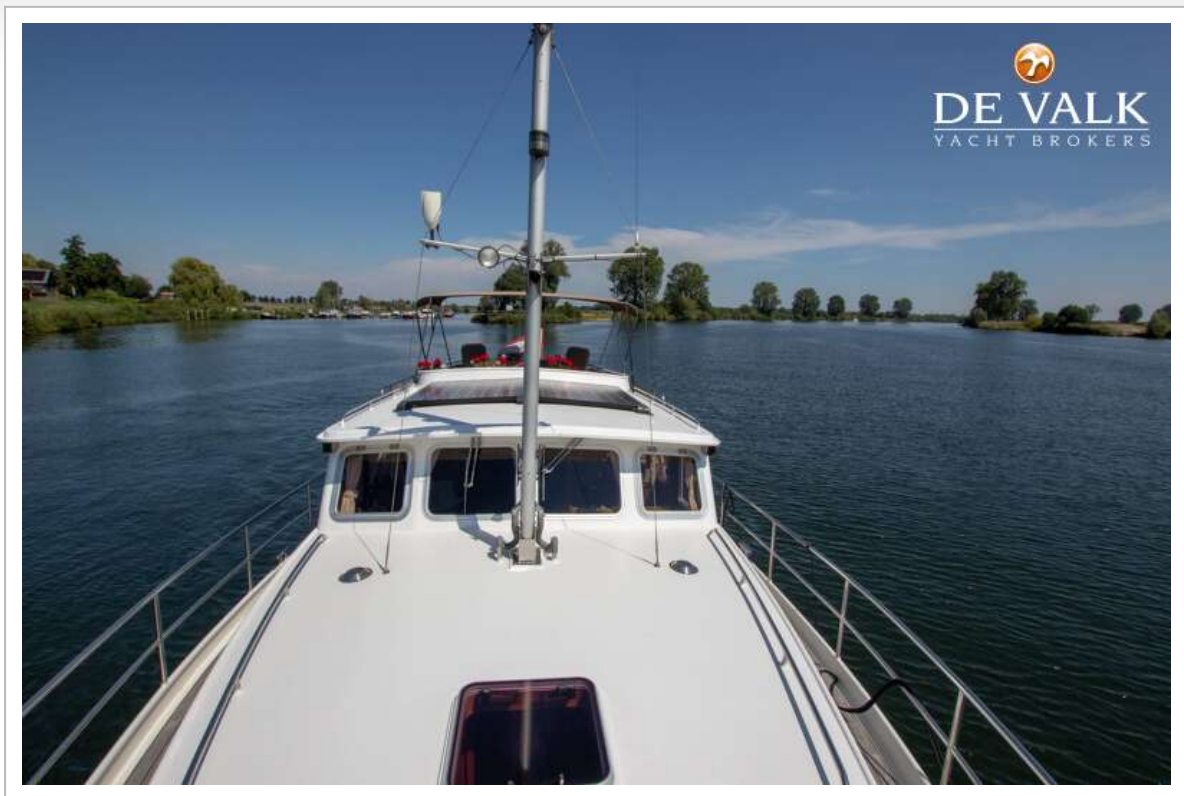
RIJNLANDVLET 1250 GS AK

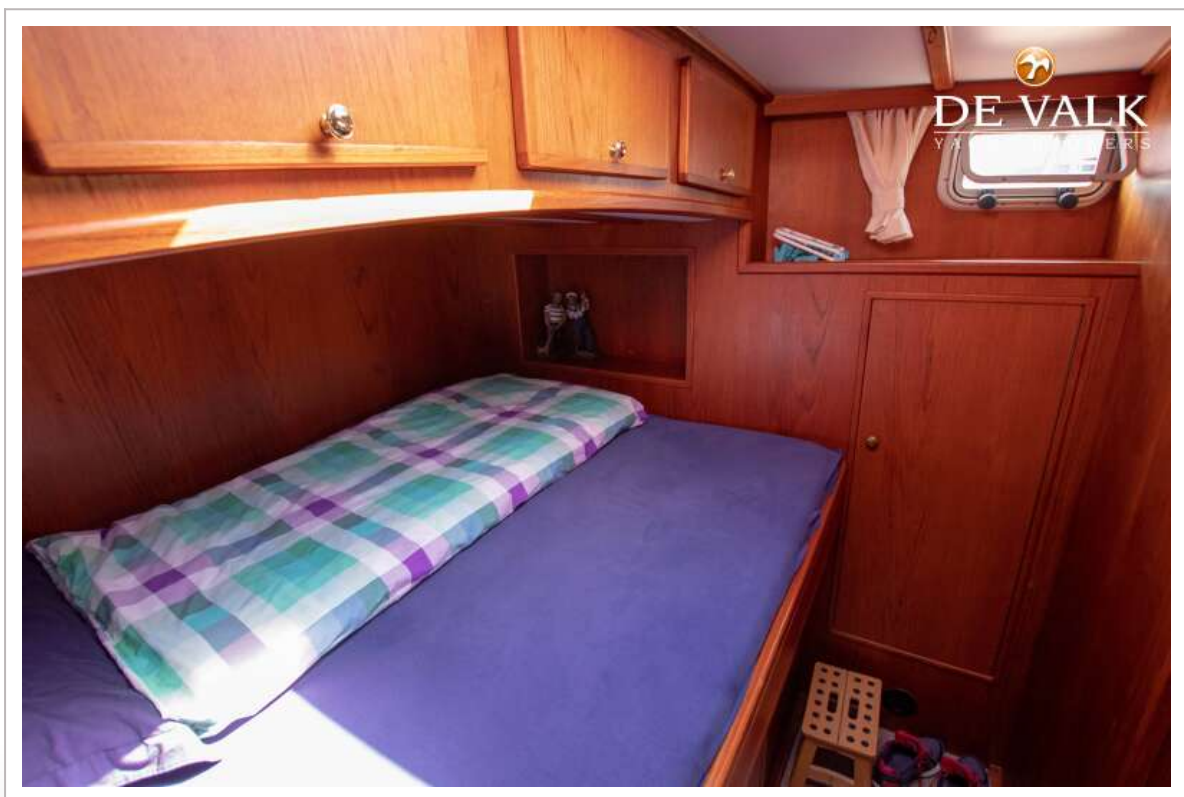
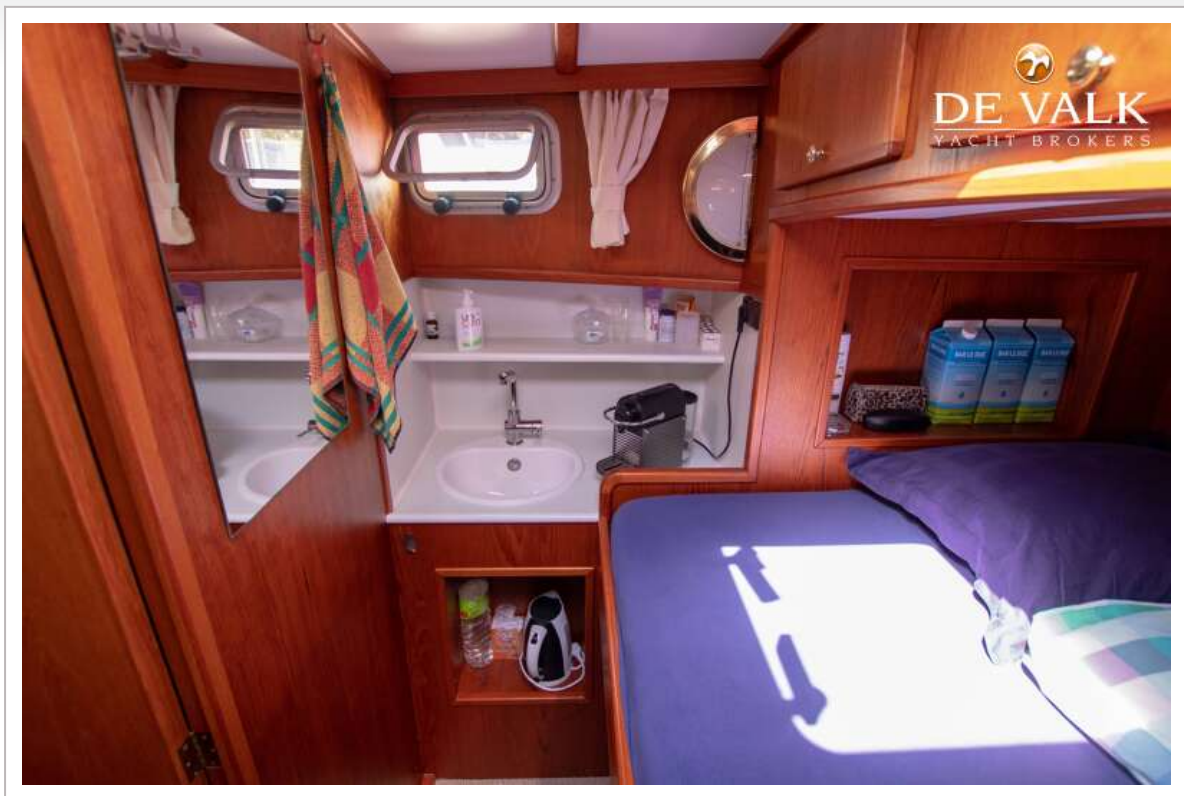


RIJNLANDVLET 1250 GS AK

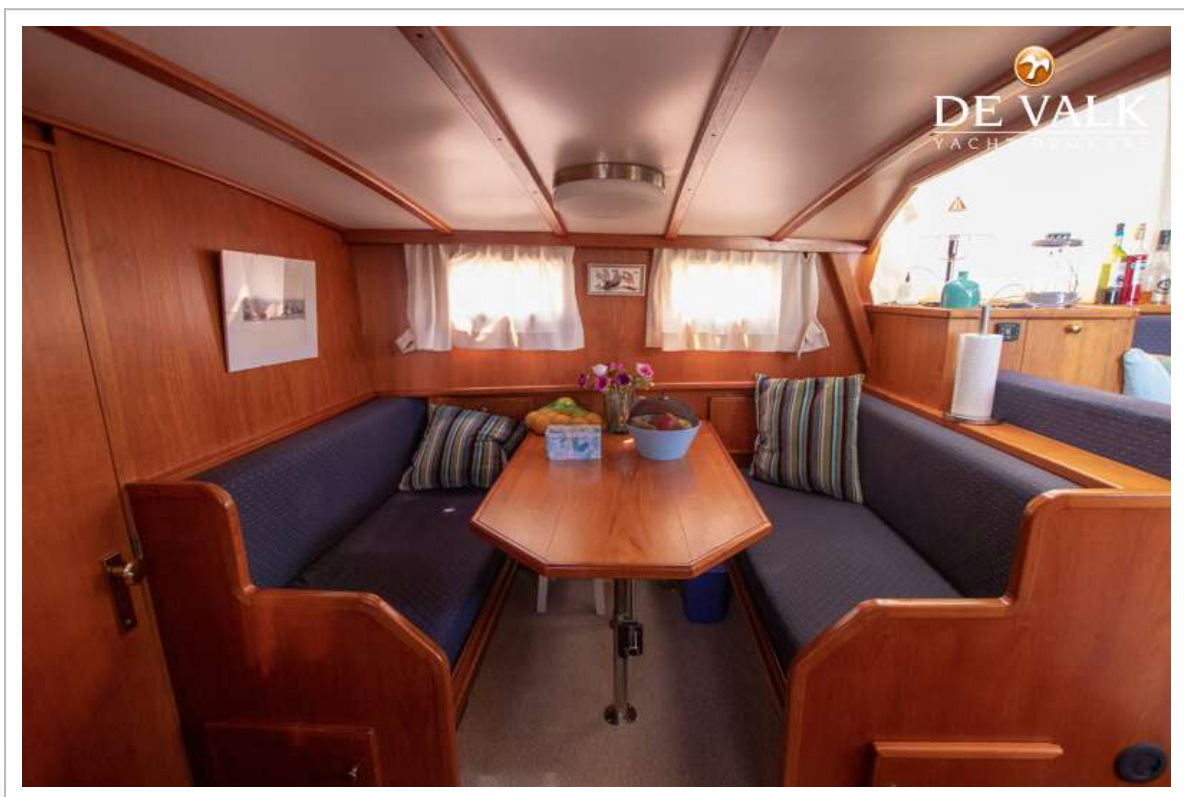
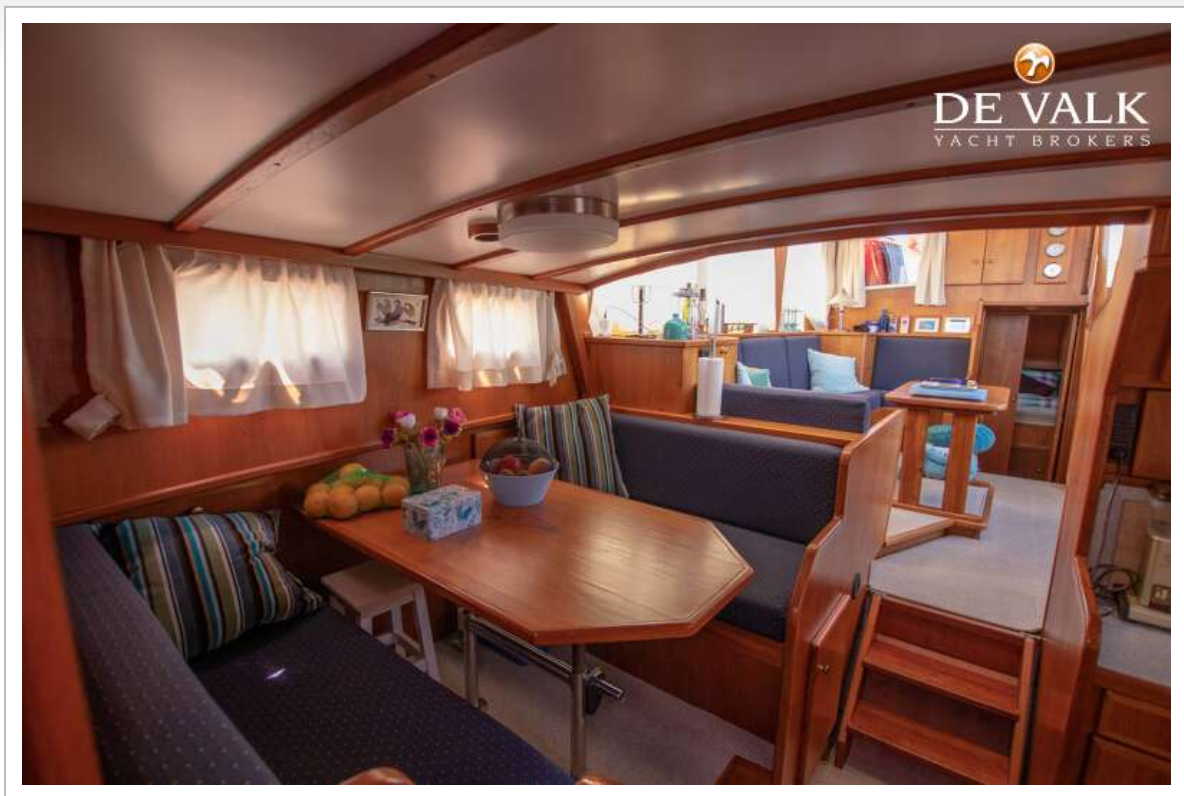


RIJNLANDVLET 1250 GS AK



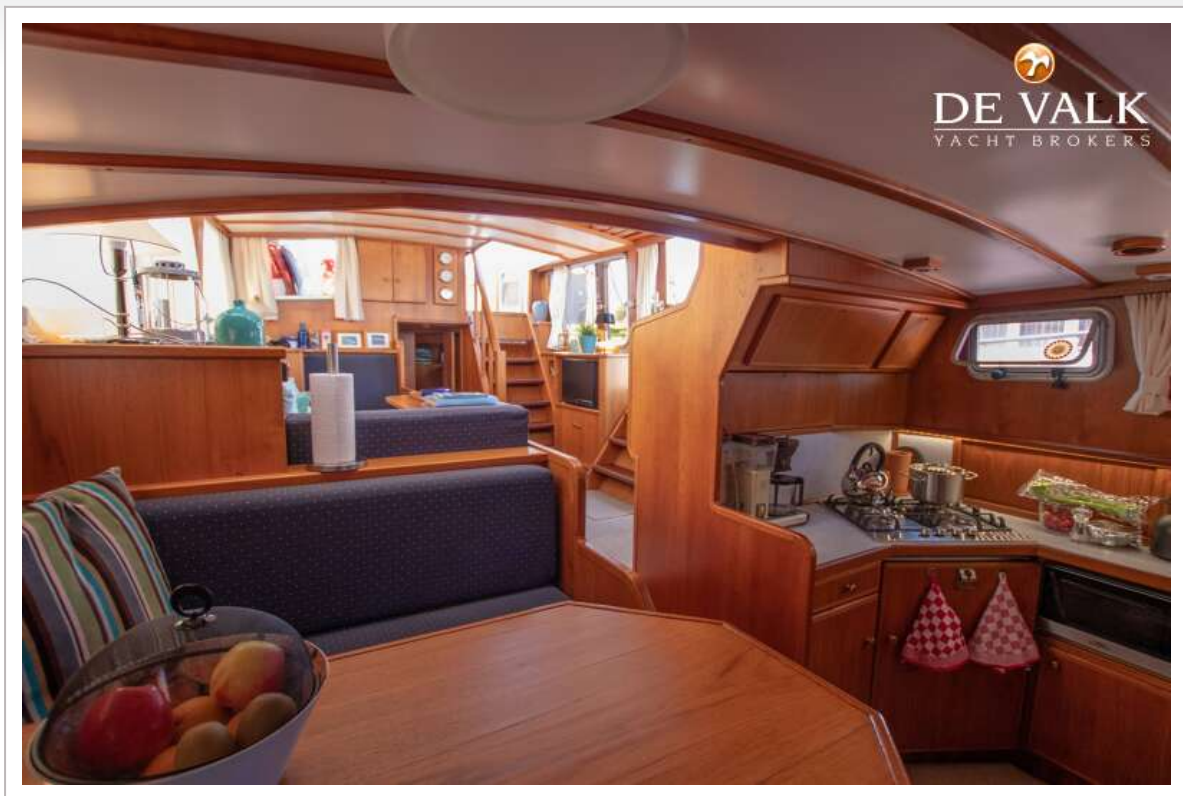


RIJNLANDVLET 1250 GS AK



RIJNLANDVLET 1250 GS AK





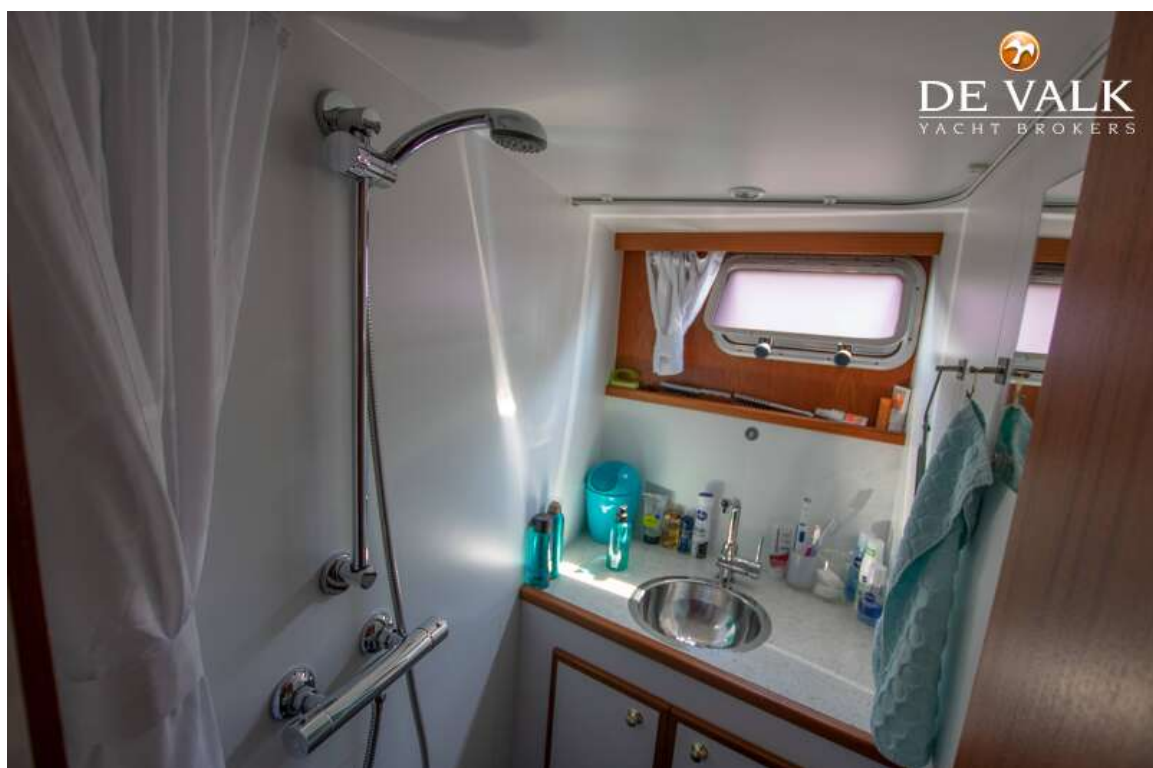
RIJNLANDVLET 1250 GS AK



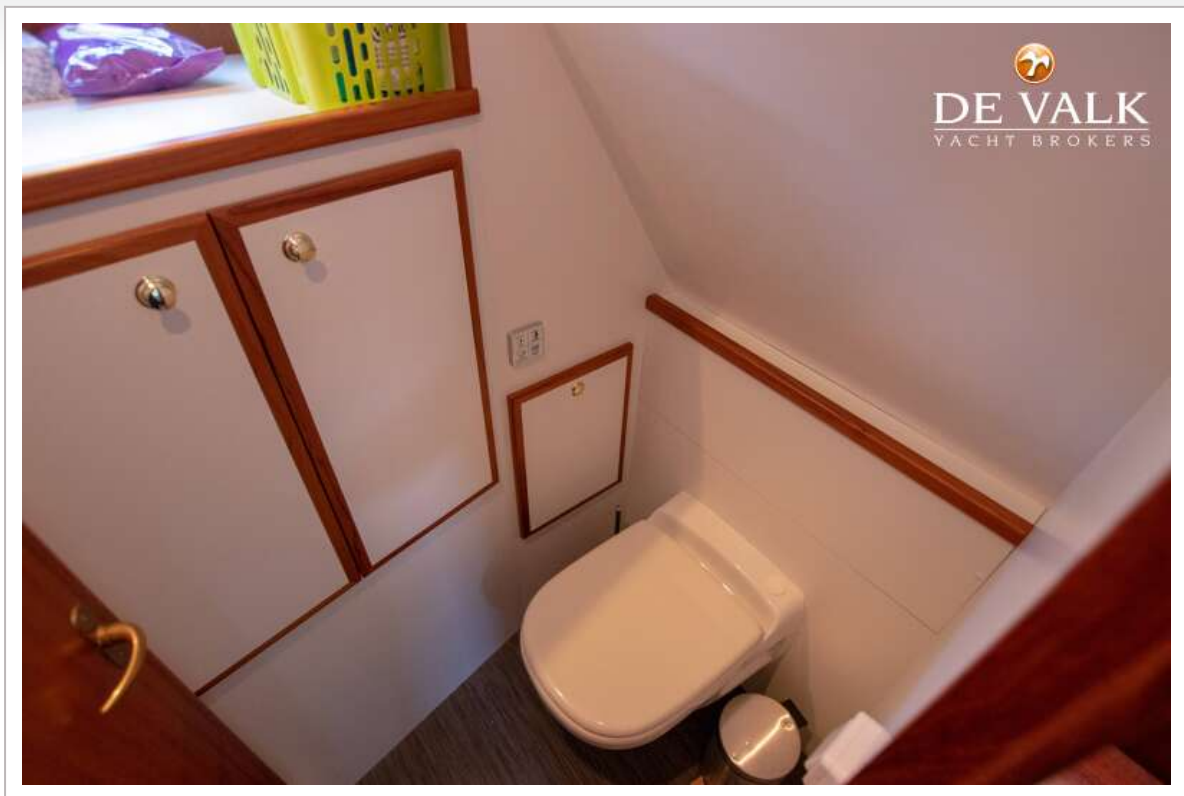
RIJNLANDVLET 1250 GS AK



RIJNLANDVLET 1250 GS AK



RIJNLANDVLET 1250 GS AK



RIJNLANDVLET 1250 GS AK

