



MAKMA CARIBBEAN 31

MAKMA CARIBBEAN 31

BROKER'S COMMENTS

A cabin sloop with character and appearance; that is the Makma Caribbean. This attractive fast weekender is equipped with a two persons bed, convertible dinette, galley and bathroom with shower and electric toilet which makes this Caribbean 31 a comfortable stay on board. This Caribbean 31 is perfect for weekend-/daytrips and can comfortably overnight up to four persons. Her 110 Hp engine and bow thruster makes this Caribbean 31 easy to maneuver.

Arjen Hoeksma

SPECIFICATIONS

Dimensions	9.00 x 3.35 x 0.85 (m)	Builder	Makma Marine
Built	2009	Cabins	1
Material	GRP	Berths	2
Engine(s)	1 x Yanmar 4JH4-HET diesel	Hp/Kw	110.00 (hp), 80.85 (kw)
Asking price	sold (VAT)	Lying	at sales office

CONTACT

Sales office	De Valk Loosdrecht	Telephone	+31 35 582 90 30
Address	't Breukeleveense Meentje 6 1231 LM Loosdrecht / Wijdmeren The Netherlands	E-mail	loosdrecht@devalk.nl

DISCLAIMER

These particulars are given in good faith as supplied but cannot be guaranteed.



GENERAL

Model	MAKMA CARIBBEAN 31
Type	motor yacht
LOA (m)	9,00
Beam (m)	3,35
Draft (m)	0,85
Air draft (m)	1,60
Air draft min (m)	2,45
Year built	2009
Launched	2010
Builder	Makma Marine
Country	The Netherlands
CE norm	C
Hull material	GRP
Hull colour	white
Hull shape	hard chine
Superstructure material	GRP
Rubbing strake	fender rope
Deck material	GRP
Deck finish	teak
Superstructure deck finish	non-skid moulded in
Cockpit deck finish	teak
Antifouling (year)	2020
Window material	Plastic
Deckhatch	yes
Fuel tank (litre)	
Level indicator (fuel tank)	yes
Freshwater tank (litre)	
Level indicator (freshwater)	yes
Blackwater tank (litre)	
Level indicator (blackwater)	yes



Wheel steering hydraulic

ACCOMMODATION

Cabins	1
Berths	2
Interior	teak
Layout	yes
Floor	teak
Open cockpit	yes
Saloon	yes
Heating	diesel ducted hot air Eberspracher
Air-conditioning	
Dinette to convert into berth	yes
Galley	yes
Countertop	corian
Sink	stainless steel
Cooker	calor gas 2 burners Smev
Microwave	Severin
Fridge	2X Indel B Outside (2018)
Freezer	2X Indel B Outside (2020)
Hot water system	220V + engine
Water pressure system	electrical
Owners cabin	double bed Matras replaced in 2014
Wardrobe	hanging
Bathroom	shared
Toilet	shared
Toilet system	electric
Wash basin	in the bathroom
Shower	shared Replaced crane 2017

MACHINERY



No of engines	1
Make	Yanmar
Type	4JH4-HET
HP	110
kW	80,85
Fuel	diesel
Maximum speed (kn)	10
Engine hours	988
Engine cooling system	freshwater heat exchanger
Drive	shaft
Engine controls	bowden cable
Gearbox	hydraulic
Bowthruster	electric Lewmar
Propeller type	fixed
Electric bilge pump	yes
Start battery	yes
Service battery	VMF 165 deep cycle (2016)
Bowthruster battery	VMF 165 deep cycle (2016)
Battery monitor	Victron (2019)
Battery charger/inverter	Victron (2016)
Shorepower	with cable

NAVIGATION

Compass	Plastimo
Depth sounder/log	Raymarine ST60
Autopilot	Raymarine ST60
Plotter	Raymarine RC435I
Navigation lights	yes

EQUIPMENT

Sprayhood	with fly screen (2016)
------------------	------------------------



MAKMA CARIBBEAN 31

Cockpit cover	yes
Bimini	yes
Cockpit cushions	Professionally cleaned in 2020
Cockpit table	yes
Bathing platform	yes
Boarding ladder	stainless steel
Deck shower	Hot and Cold water
Sea railing	stainless steel
Grab rail (superstructure)	stainless steel
Horn	electric
Radio	Pioneer
Cockpit speakers	Sony





MAKMA CARIBBEAN 31





MAKMA CARIBBEAN 31



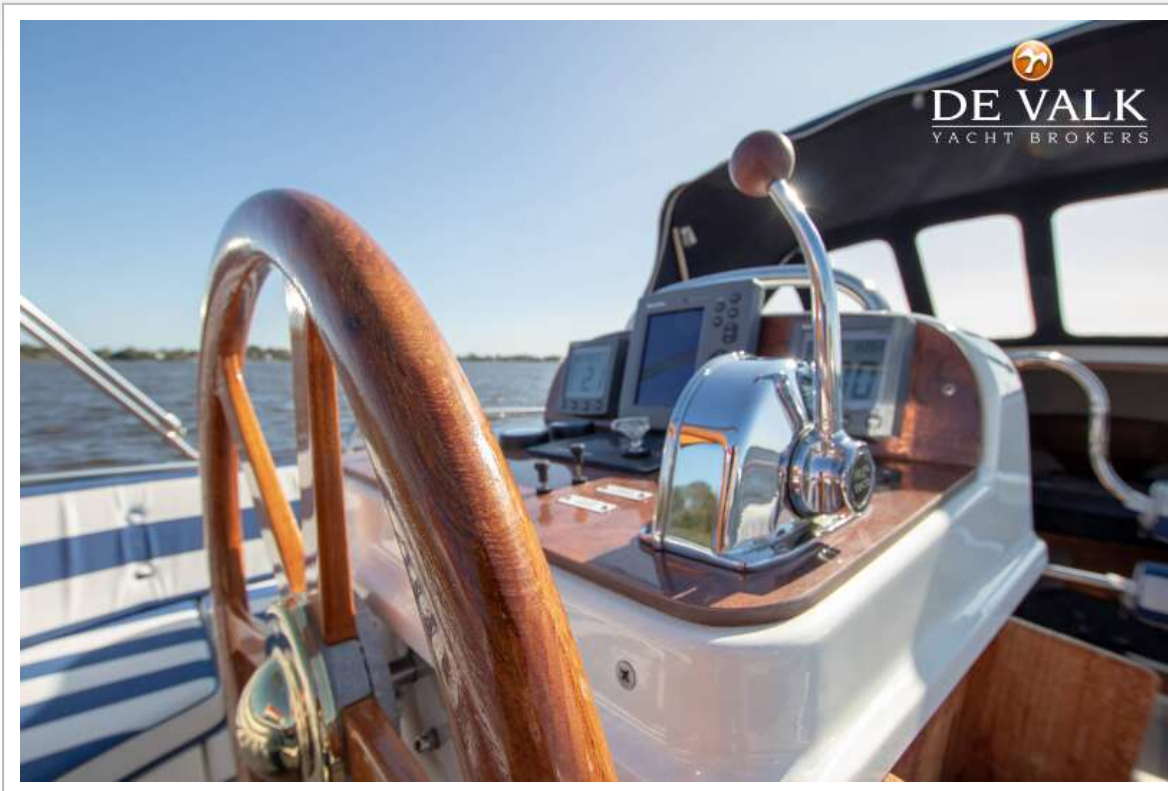
MAKMA CARIBBEAN 31



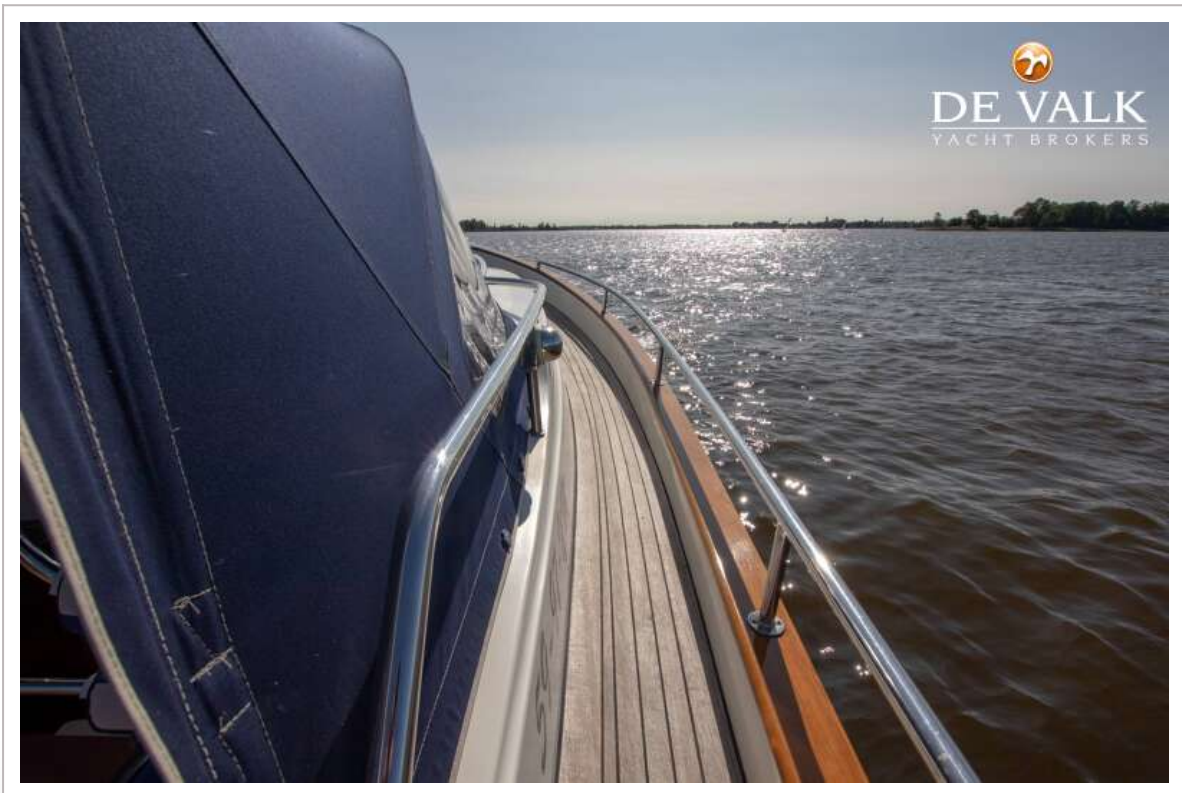
MAKMA CARIBBEAN 31



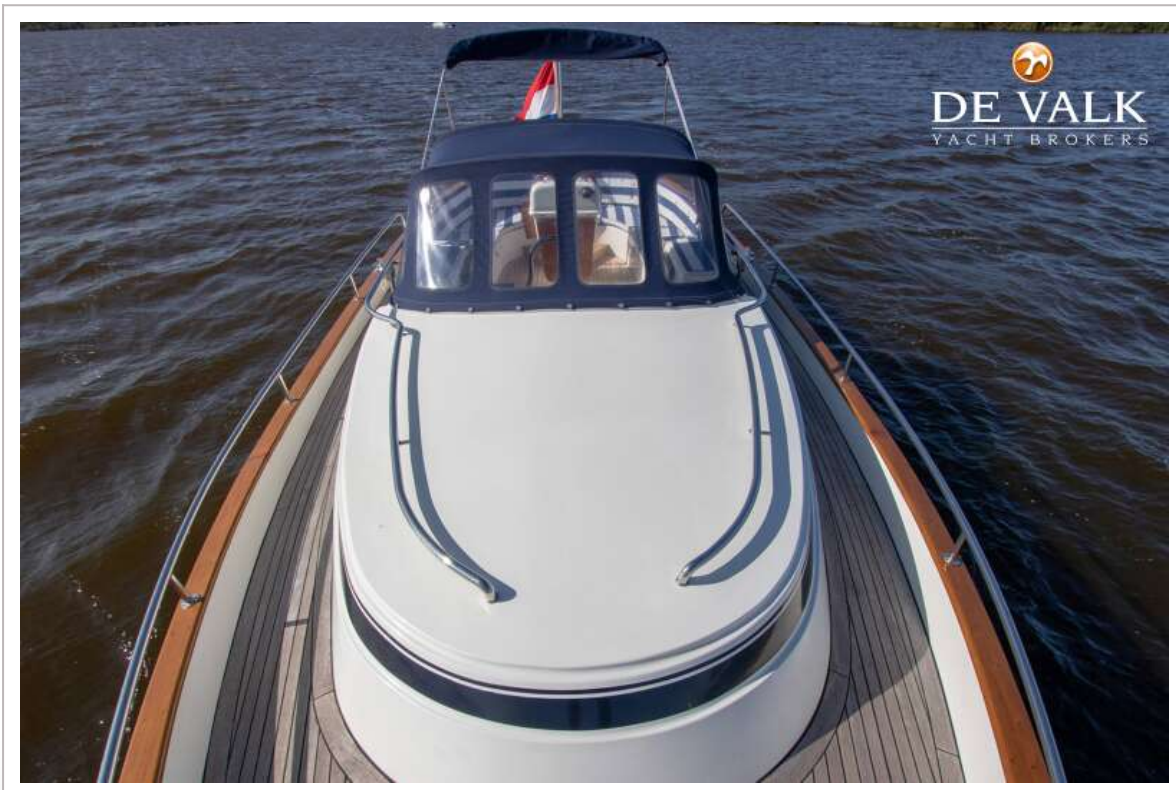
MAKMA CARIBBEAN 31



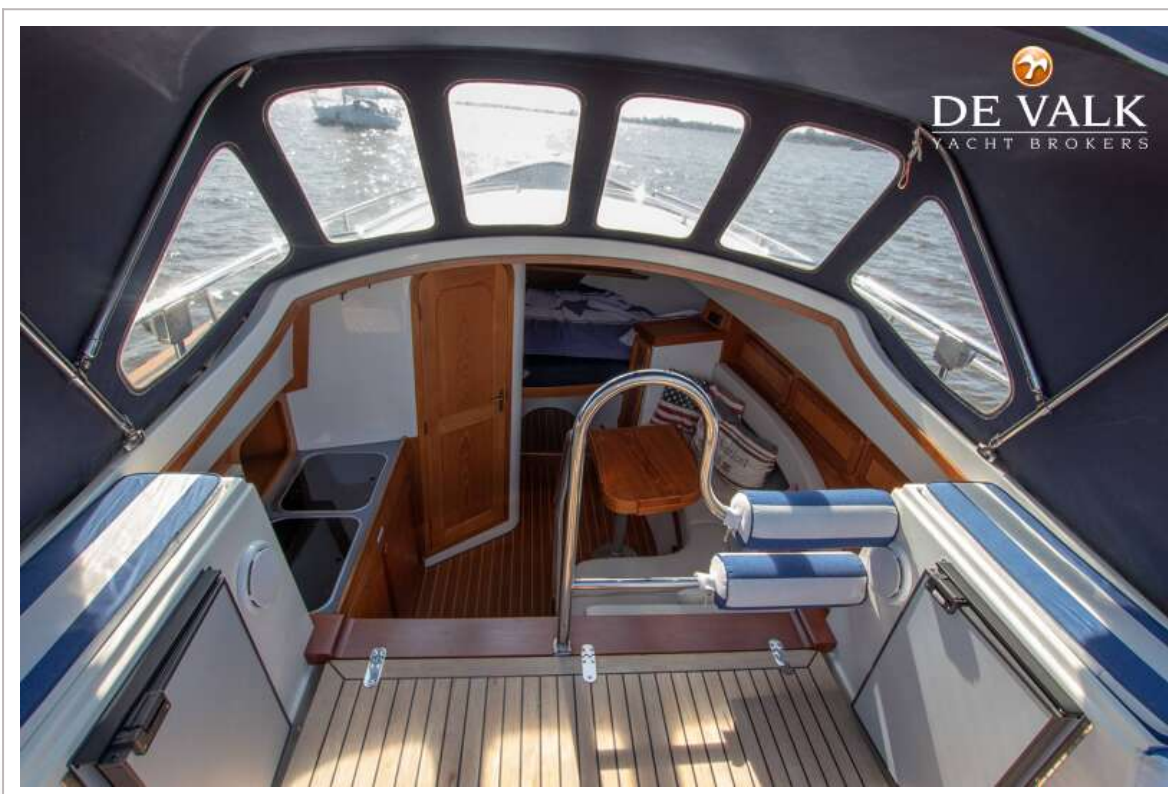
MAKMA CARIBBEAN 31



MAKMA CARIBBEAN 31



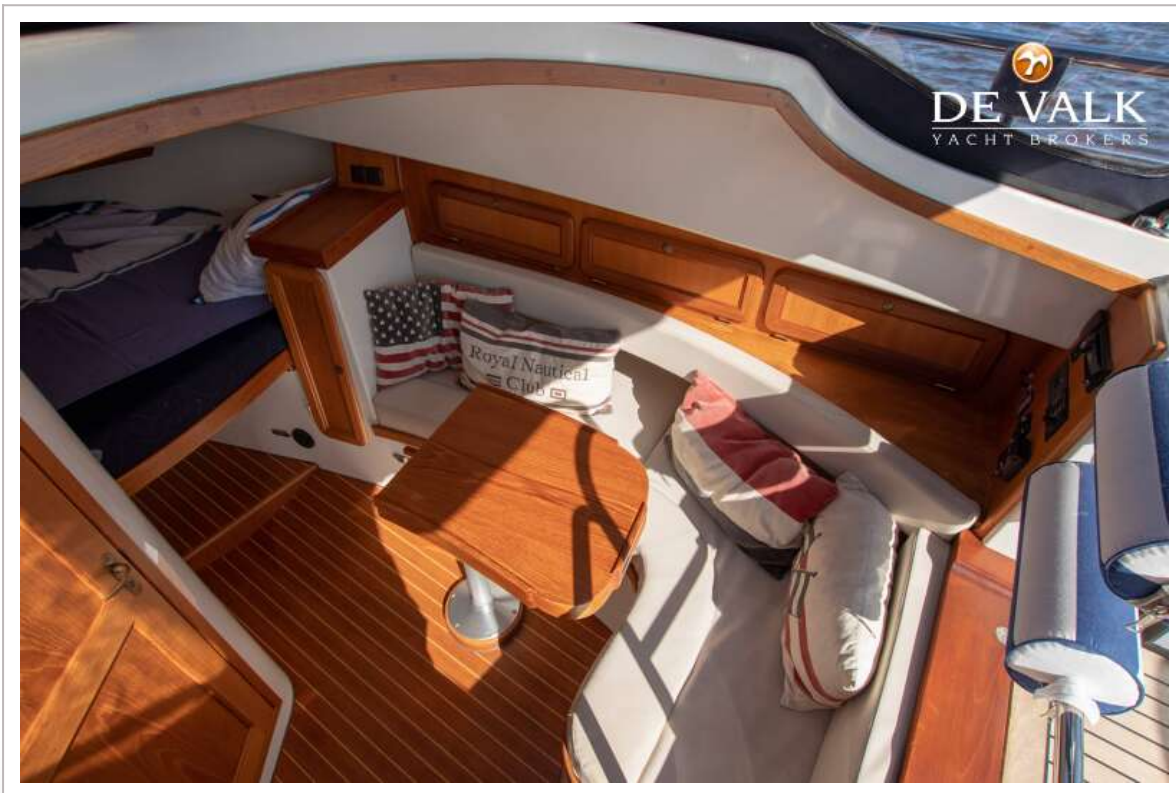
MAKMA CARIBBEAN 31



MAKMA CARIBBEAN 31



MAKMA CARIBBEAN 31

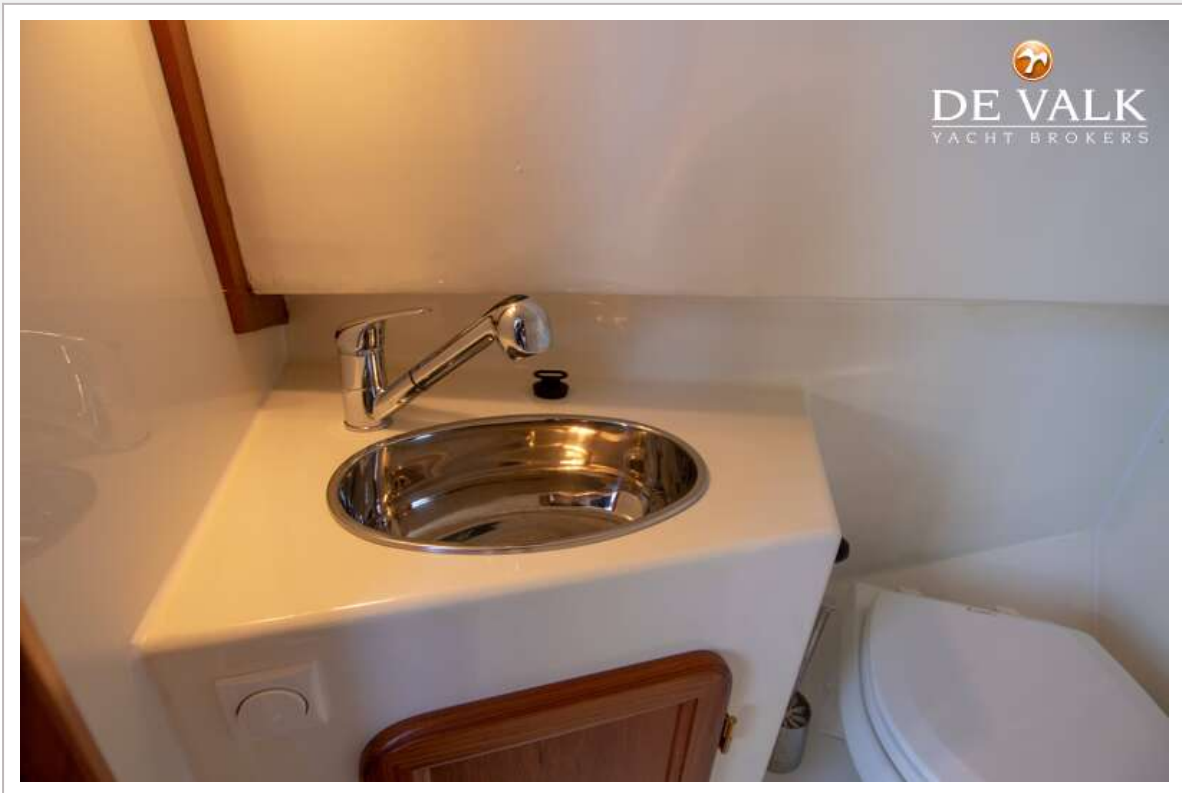


MAKMA CARIBBEAN 31

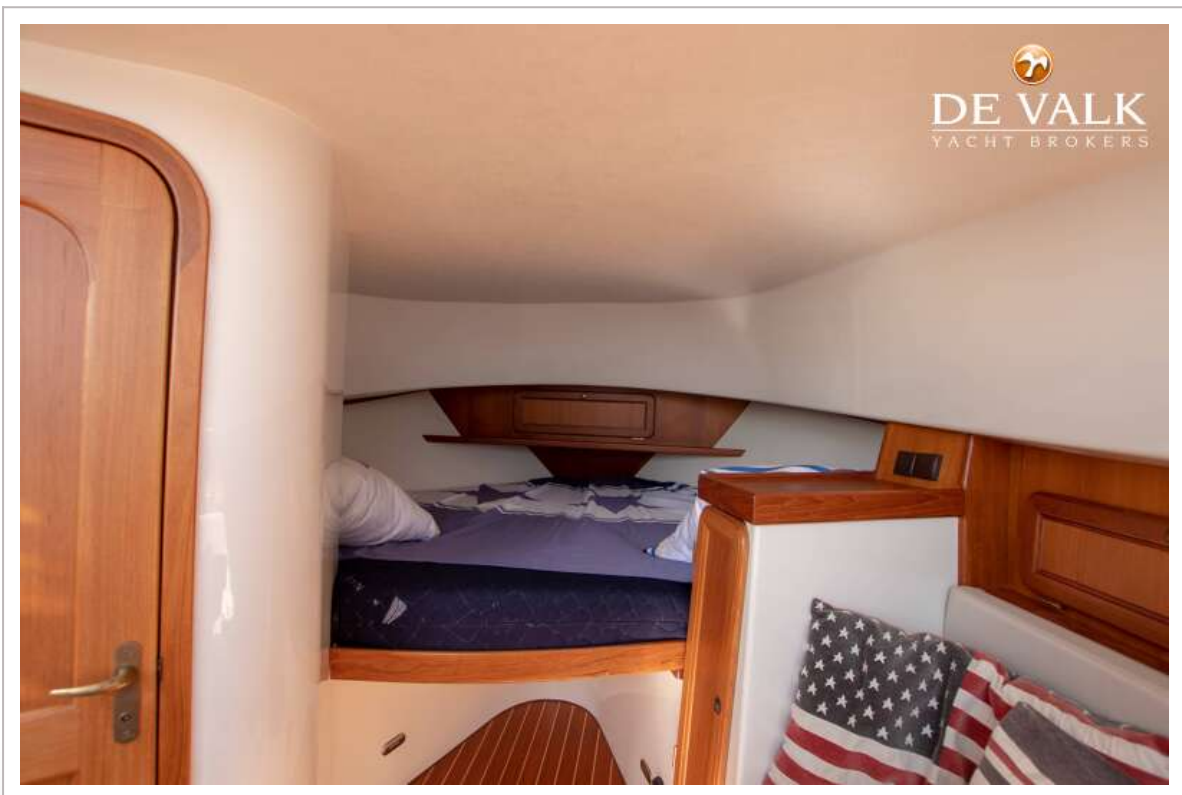


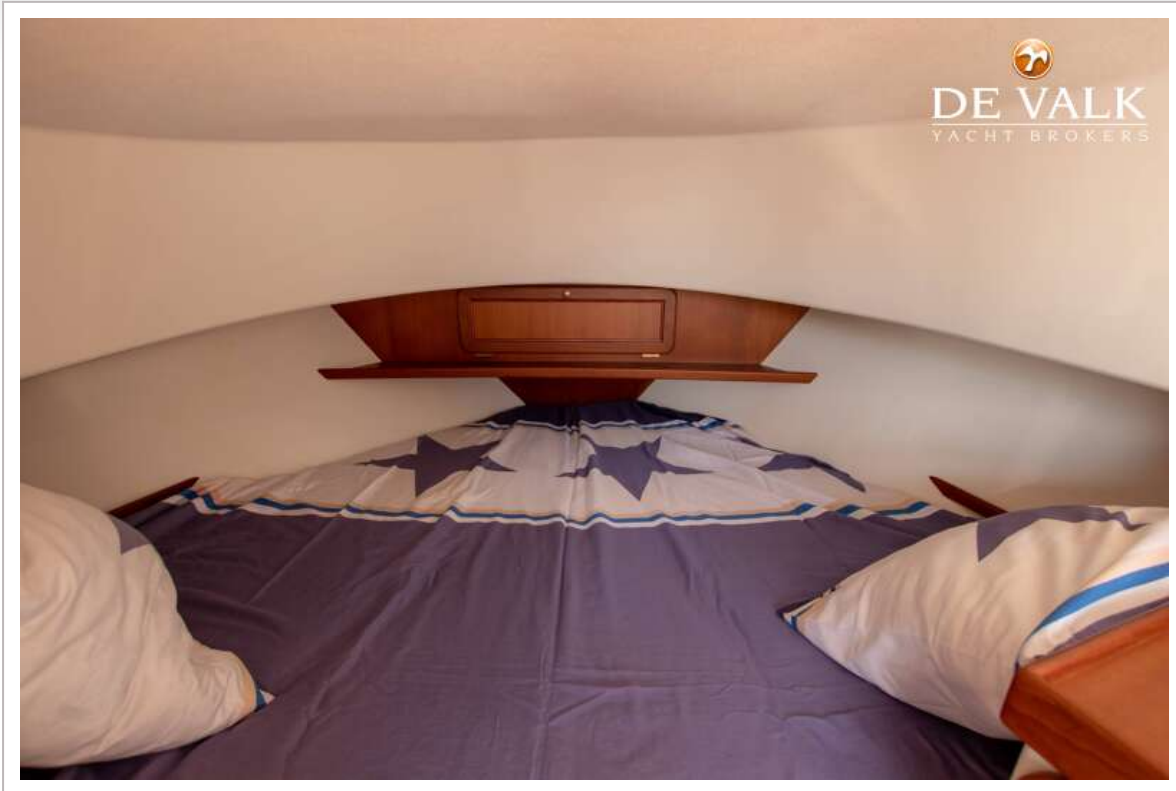
MAKMA CARIBBEAN 31





MAKMA CARIBBEAN 31





MAKMA CARIBBEAN 31



