



DE VALK
YACHT BROKERS



ENDEAVOR 44



DE VALK
YACHT BROKERS

ENDEAVOR 44

BROKER'S COMMENTS

The Endeavor 44 is an unique motor yacht. Fast sailing, adjustable helm which allows more space in the guest cabin, owners cabin with French bed and guest cabin with double bed. Furthermore, the yacht is equipped with a Fisher Panda generator, two Steyr diesel engines, jet bowthruster and a ship system to maneuver the yacht on a distance. In 2017 the Endeavor is equipped with a new navigation system, dashboard, control system and motormanagement. Come to our covered sales marina in Loosdrecht, this yacht is definitely worth a visit.

Koen Mulder

SPECIFICATIONS

Dimensions	13.40 x 4.20 x 0.95 (m)	Builder	Vels & Partners
Built	2009	Cabins	2
Material	GRP	Berths	6
Engine(s)	2 x Steyr MO256H45 diesel	Hp/Kw	2 x 250.00 (hp), 183.75 (kw)
Asking price	sold (VAT)	Lying	at sales office

CONTACT

Sales office	De Valk Loosdrecht B.V.	Telephone	+31 (0)35 582 90 30
Address	't Breukeleveense Meentje 6 1231LM Loosdrecht / Wijdmeren NL	E-mail	loosdrecht@devalk.nl

DISCLAIMER

These particulars are given in good faith as supplied but cannot be guaranteed.



GENERAL

Model	ENDEAVOR 44
Type	motor yacht
LOA (m)	13,40
Beam (m)	4,20
Draft (m)	0,95
Air draft (m)	2,75
Year built	2009
Builder	Vels & Partners
Country	The Netherlands
Designer	Hans & Herman Langenberg
Displacement (t)	9,7
CE norm	B
Hull material	GRP
Hull colour	blue
Hull shape	round-bilged
Superstructure material	GRP
Rubbing strake	rubber
Deck material	GRP
Deck finish	teak
Superstructure deck finish	paint
Cockpit deck finish	teak
Antifouling (year)	2019
Window material	tempered glass
Deckhatch	yes
Portholes	
Radar arch	collapsible
Fuel tank (litre)	epoxy 1600 Ltr.
Level indicator (fuel tank)	yes
Freshwater tank (litre)	epoxy 800 Ltr.
Level indicator (freshwater)	yes



Blackwater tank (litre)	145 Ltr.
Level indicator (blackwater)	yes
Blackwater tank extraction	deck extraction + pump
Greywater tank (litre)	95 Ltr. with own extraction pump
Level indicator (greywater)	yes
Wheel steering	hydraulic Simrad joystick
Inside helm position	yes
Outside helm position	Helm position can be hydraulic lifted through the sliding roof
More info on paintwork	Two-component Awlgrip

ACCOMMODATION

Cabins	2
Berths	6
Interior	teak
Floor	parquet Teakline
Open cockpit	yes
Saloon	yes
Sliding roof	electric
Heating	central heating Webasto
Air-conditioning	Webasto
Dinette	yes
Dinette to convert into berth	yes
Sliding door to cockpit	yes
Galley	yes
Countertop	corian
Sink	stainless steel
Cooker	induction Siemens 2 burners
Microwave/oven combi	Siemens
Fridge	Isotherm
Freezer	Isotherm
Hot water system	220V + engine



Water pressure system	electrical
Hot water tap	Quooker
Owners cabin	French bed
Wardrobe	hanging/drawers/shelves
Bathroom	separate
Toilet	separate Johnson
Toilet system	electric
Wash basin	in the bathroom
Shower	shared
Guest cabin 1	double bed
Wardrobe	drawers
Washing machine/dryer combi	Candy 3,5 kg

MACHINERY

No of engines	2
Make	Steyr
Type	MO256H45
HP	250
kW	183,75
Fuel	diesel
Year installed	2009
Maximum speed (kn)	19
Engine cooling system	freshwater heat exchanger
Drive	stern
Engine controls	electrical EMC
Bowthruster	electric Sidepower
Sternthruster	water jet Jet Thruster JT-70 2018
Exhaust	watercooled
Propeller blades	3 -RVS for Mercury Bravo 2 heckdrives
Electric bilge pump	yes
Bilge alarm	yes



Electrical installation	220-230 / 24 Volt
Generator	Fischer Panda 5 kVa
Start battery	2 x Optima Red Top 2016
Service battery	8 x 120Ah AGM 2016
Generator battery	yes
Bowthruster battery	yes
Sternthruster battery	4 x Optima Coil
Battery charger/inverter	3x Victron Multi Plus 24/3000/70
Shorepower	with cable
Trimtabs	Lenco
Extra info	With Hydronautica remote engine control
Extra info	Motor with Steyr control panel/datasystem

NAVIGATION

Electric compass	yes
Depth sounder/log	Simrad
VHF	Simrad
VHF handheld	Simrad HS35
Autopilot	Simrad FU80
Rudder angle indicator	Simrad
Radar/GPS/plotter	Simrad NSS16 EVO3
AIS transceiver	Simrad
Camera	Simrad
Navigation lights	yes

EQUIPMENT

Fixed hardtop	Cockpit roof electrically retractable
Cockpit cover	2016
Cockpit cushions	yes
Cockpit table	yes
Cockpit chairs	Seat electrically extendable



Bathing platform	yes
Boarding ladder	stainless steel
Transom door	yes
Deck shower	yes
Anchor	
Anchor chain	yes
Windlass	electrical Quick - with remote control
Davits	stainless steel Removable
Davits controls	manual
Sea railing	stainless steel
Wiper	2 x Exalto
Horn	electric
Fenders	yes
Mooring lines	yes
TV	Samsung Electrically extendable
Radio	Sonos System
Cockpit speakers	yes
Speakers in salon	yes



ENDEAVOR 44



ENDEAVOR 44

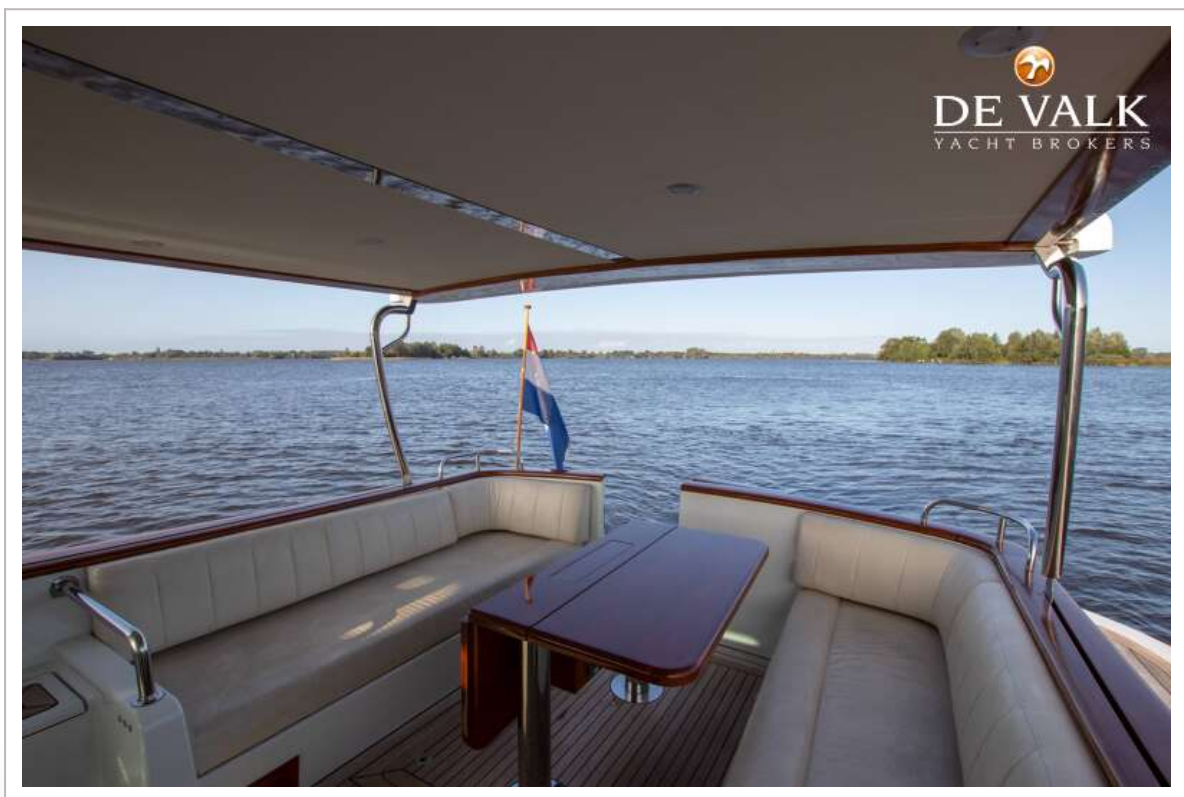




ENDEAVOR 44



ENDEAVOR 44

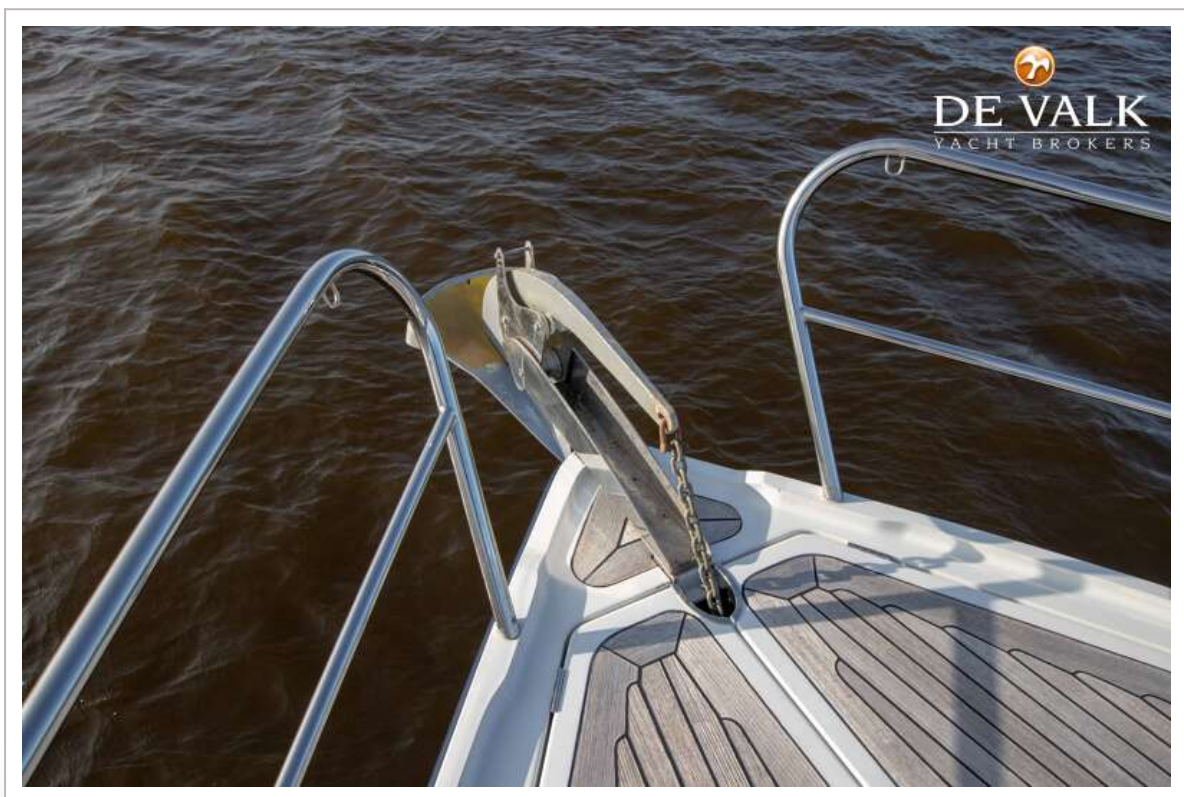


ENDEAVOR 44





ENDEAVOR 44



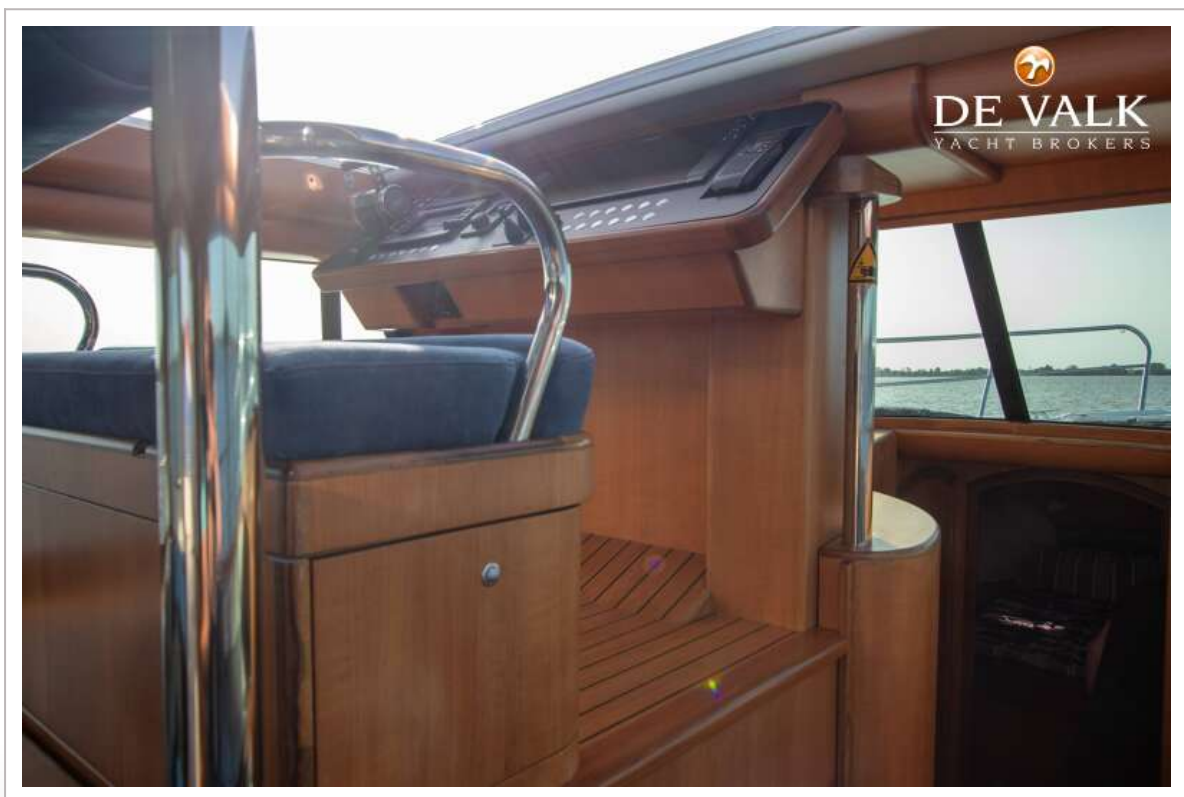
ENDEAVOR 44



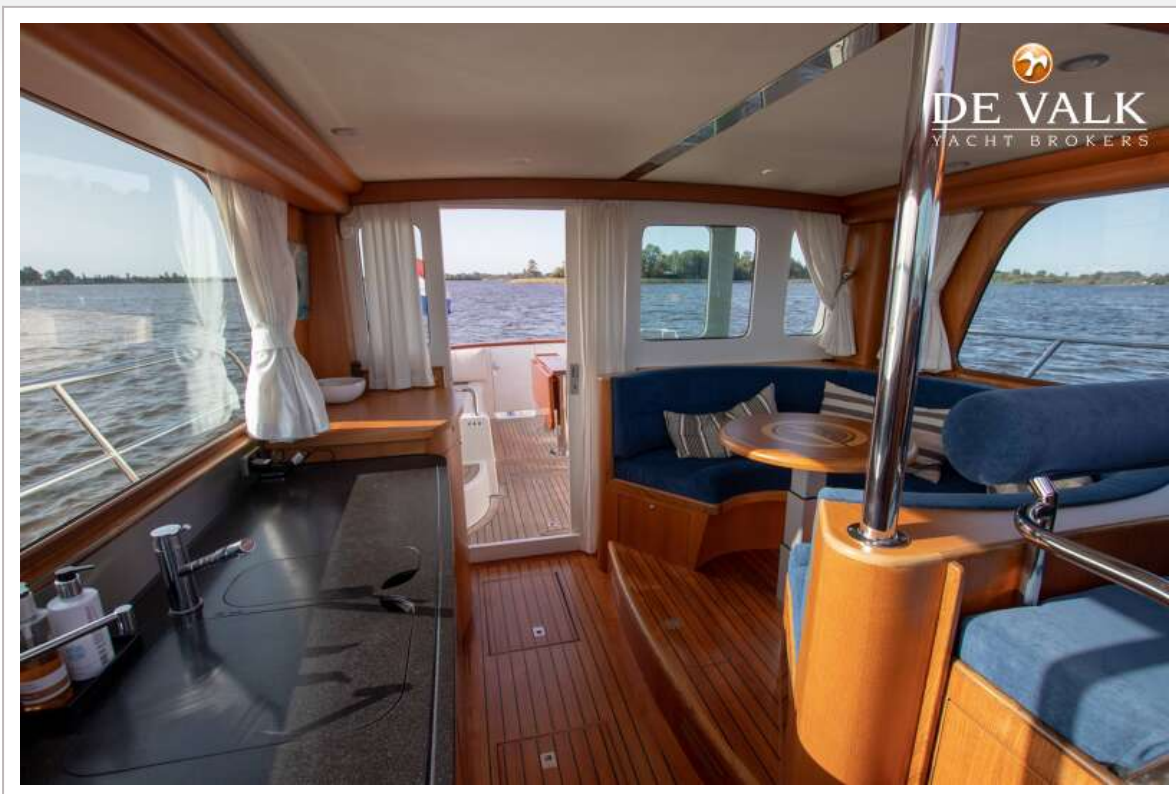
ENDEAVOR 44



ENDEAVOR 44



ENDEAVOR 44



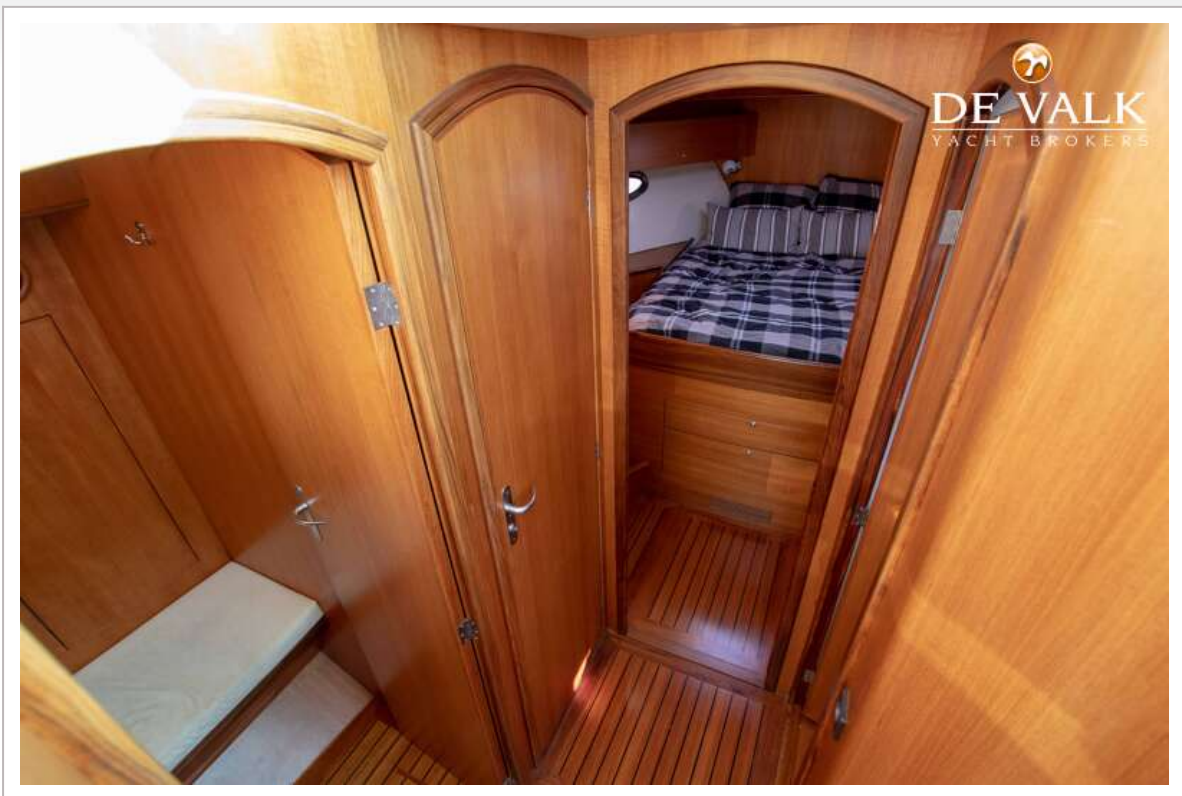
ENDEAVOR 44



ENDEAVOR 44



ENDEAVOR 44



ENDEAVOR 44



ENDEAVOR 44



ENDEAVOR 44



