



## TRADER 42 SIGNATURE



# TRADER 42 SIGNATURE

## BROKER'S COMMENTS

The Trader 42 Signature is a motor yacht made of polyester, but built just as heavily as steel. The 42 was designed by Tony Castro. High build quality and beautifully finished. With 2 Cummins engines of 380 hp, this ship is extremely suitable for long sea voyages with her semi displacement hull. The current owner has maintained the Trader 42 punctually, convince yourself and come by for a viewing.

*Arjen Hoeksma*

## SPECIFICATIONS

<b>Dimensions</b>	13.30 x 4.30 x 1.20 (m)	<b>Builder</b>	Trader Motoryachts
<b>Built</b>	2008	<b>Cabins</b>	3
<b>Material</b>	GRP	<b>Berths</b>	6
<b>Engine(s)</b>	2 x CUMMINS QSB5,9 diesel	<b>Hp/Kw</b>	2 x 380.00 (hp), 279.30 (kw)
<b>Asking price</b>	sold (VAT )	<b>Lying</b>	at sales office

## CONTACT

<b>Sales office</b>	De Valk Loosdrecht B.V.	<b>Telephone</b>	+31 (0)35 582 90 30
<b>Address</b>	't Breukeleveense Meentje 6 1231LM Loosdrecht / Wijdmeren NL	<b>E-mail</b>	loosdrecht@devalk.nl

## DISCLAIMER

These particulars are given in good faith as supplied but cannot be guaranteed.



## GENERAL

Model	TRADER 42 SIGNATURE
Type	motor yacht
LOA (m)	13,30
Beam (m)	4,30
Draft (m)	1,20
Air draft (m)	3,50
Year built	2008
Builder	Trader Motoryachts
Country	Taiwan
Displacement (t)	13,80
CE norm	A
Hull material	GRP
Hull colour	white
Superstructure material	GRP
Deck finish	teak
Cockpit deck finish	teak
Antifouling (year)	2019
Portholes	stainless steel All cabins
Radar arch	collapsible
Fuel tank (litre)	steel 1700
Level indicator (fuel tank)	yes
Freshwater tank (litre)	steel 600
Level indicator (freshwater)	yes
Blackwater tank (litre)	230
Level indicator (blackwater)	yes
Wheel steering	hydraulic
Outside helm position	hydraulic

## ACCOMMODATION

Cabins	3
--------	---



Berths	6
Interior	teak
Floor	parquet
Aft deck	yes
Headroom saloon (m)	2,00
Heating	diesel ducted hot air
Aft Cabin	yes
Sliding door to cockpit	yes
Galley	yes
Countertop	corian
Sink	stainless steel
Cooker	ceramic
Oven	yes
Microwave	Combi
Fridge	yes
Freezer	yes
Hot water system	220V + engine 50L
Water pressure system	electrical
Owners cabin	yes
Wardrobe	yes
Bathroom	yes
Toilet	yes
Toilet system	electric
Guest cabin 1	yes
Wardrobe	yes
Bathroom	yes
Toilet	yes
Toilet system	electric

## MACHINERY

No of engines	2
---------------	---



Make	CUMMINS
Type	QSB5,9
HP	380
kW	279,30
Fuel	diesel
Year installed	2008
Maximum speed (kn)	24
Cruising speed (kn)	8
Consumption (l/hr)	12
Engine hours	1750
Drive	shaft
Engine controls	electrical
Gearbox	hydraulic
Bowthruster	electric 8hp
Propeller shaft material	stainless steel
Shaft lubrication	water
Manual bilge pump	yes
Electric bilge pump	yes
Generator	wet exhaust Mastervolt 6kW
Start battery	Mastervolt 200 Ah (1)
Service battery	Mastervolt 400 Ah (2)
Battery monitor	yes
Battery charger/inverter	Mastervolt 12V/2000W/100A
Shorepower	
Trimtabs	yes

## NAVIGATION

Compass	yes
Depth sounder	yes
Log	yes
VHF	Raymarine 240E



Autopilot	Raymarine St6000
AIS receiver	yes
Searchlight	yes
Extra info	Remote control Hydronautica

## EQUIPMENT

Sprayhood	yes
Cockpit cover	2016
Cockpit cushions	yes
Cockpit table	yes
Bathing platform	yes
Boarding ladder	stainless steel
Anchor	CQR Plough 27kg
Anchor chain	60 mtr stainless steel
Windlass	electrical
Deck wash	yes
Davits	stainless steel Electric
Sea railing	yes
Wiper	yes
Horn	yes
Fenders	yes
Mooring lines	yes
TV	yes
Cockpit speakers	yes
Speakers in salon	yes
Extra info	Aft deck cover



# TRADER 42 SIGNATURE





# TRADER 42 SIGNATURE





# TRADER 42 SIGNATURE



# TRADER 42 SIGNATURE

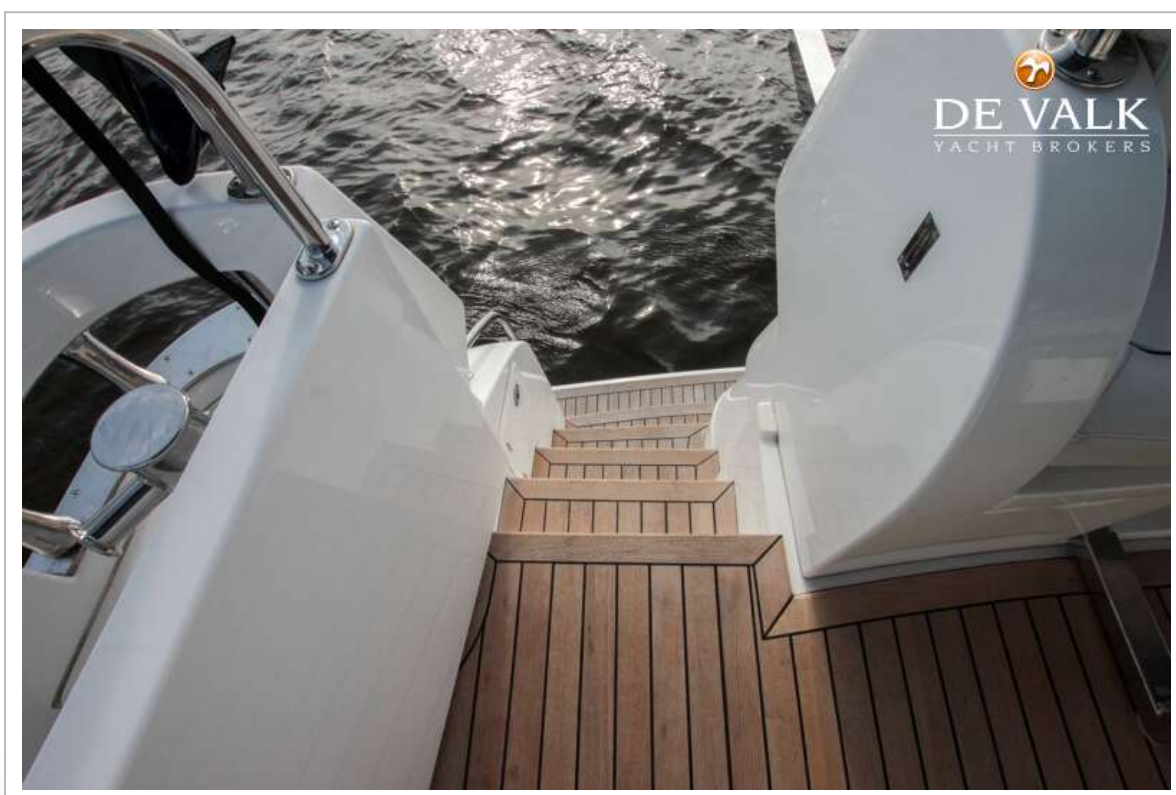


## TRADER 42 SIGNATURE





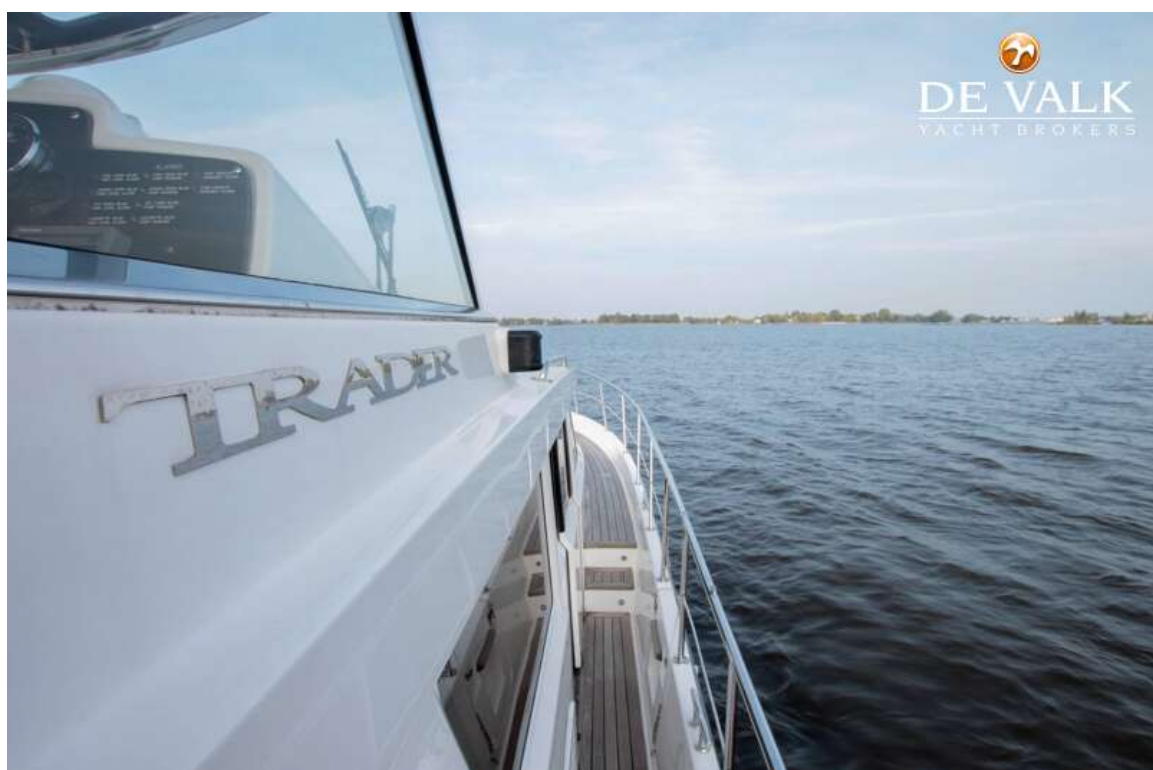
## TRADER 42 SIGNATURE



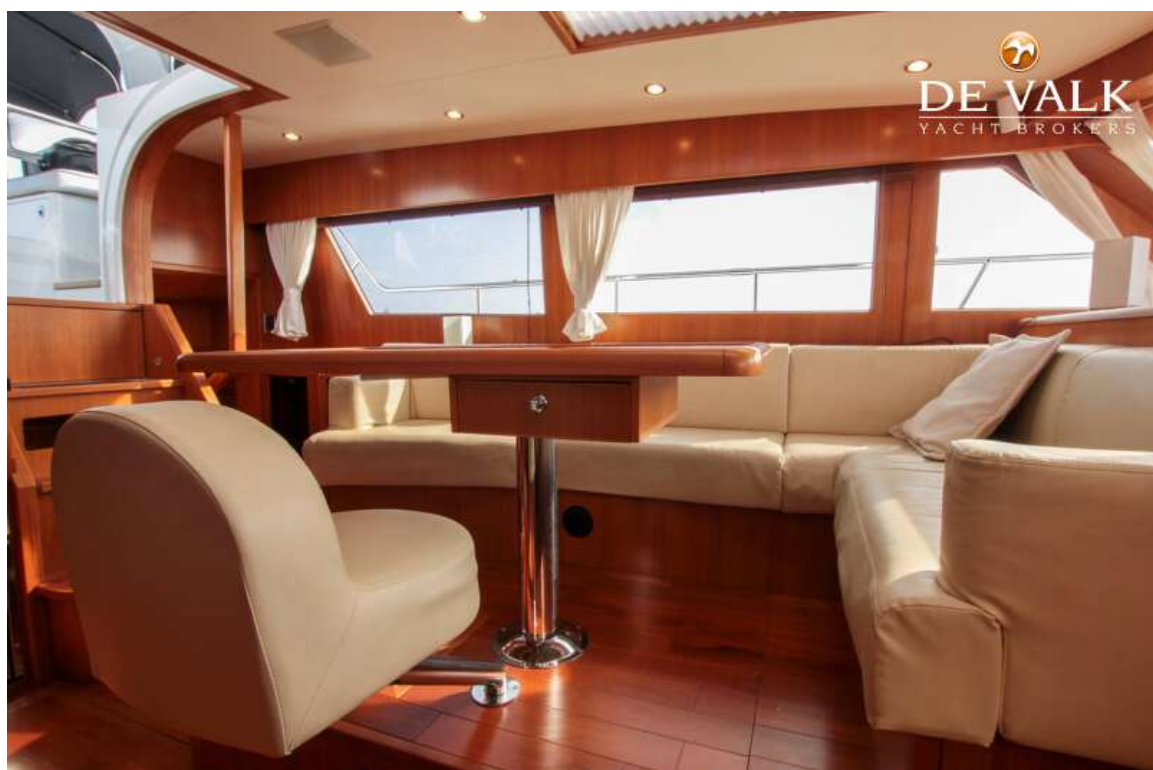




# TRADER 42 SIGNATURE

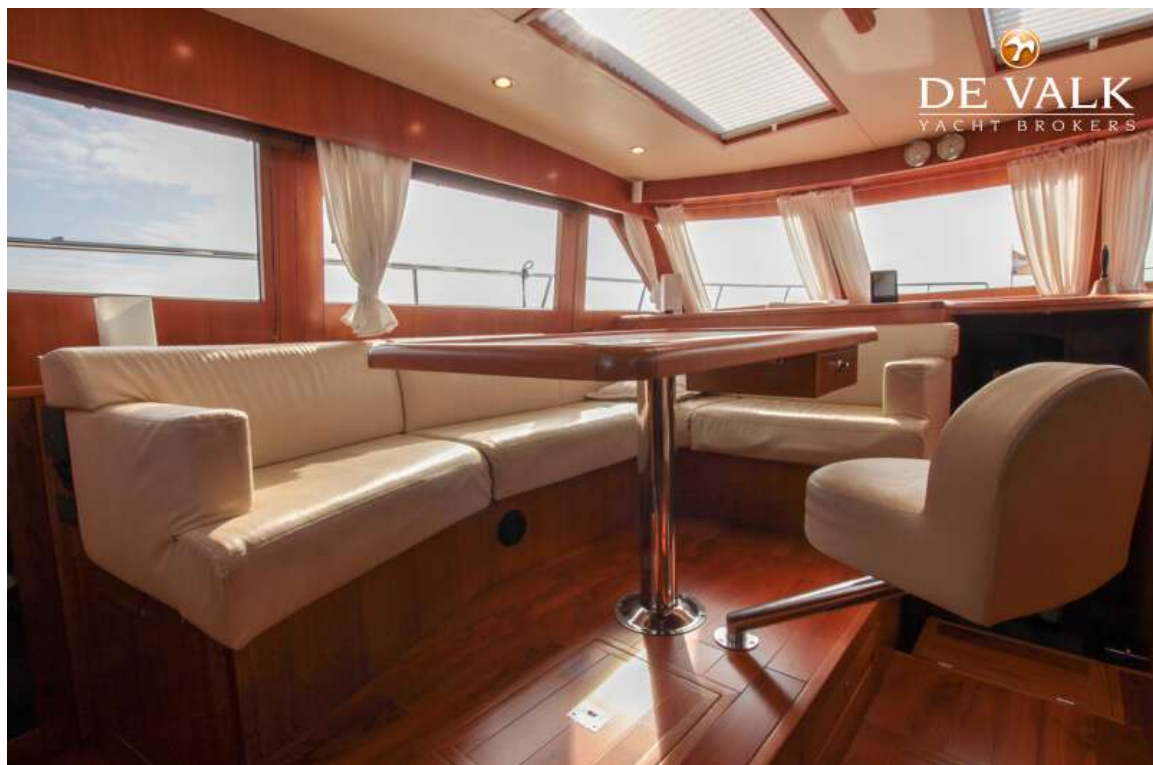
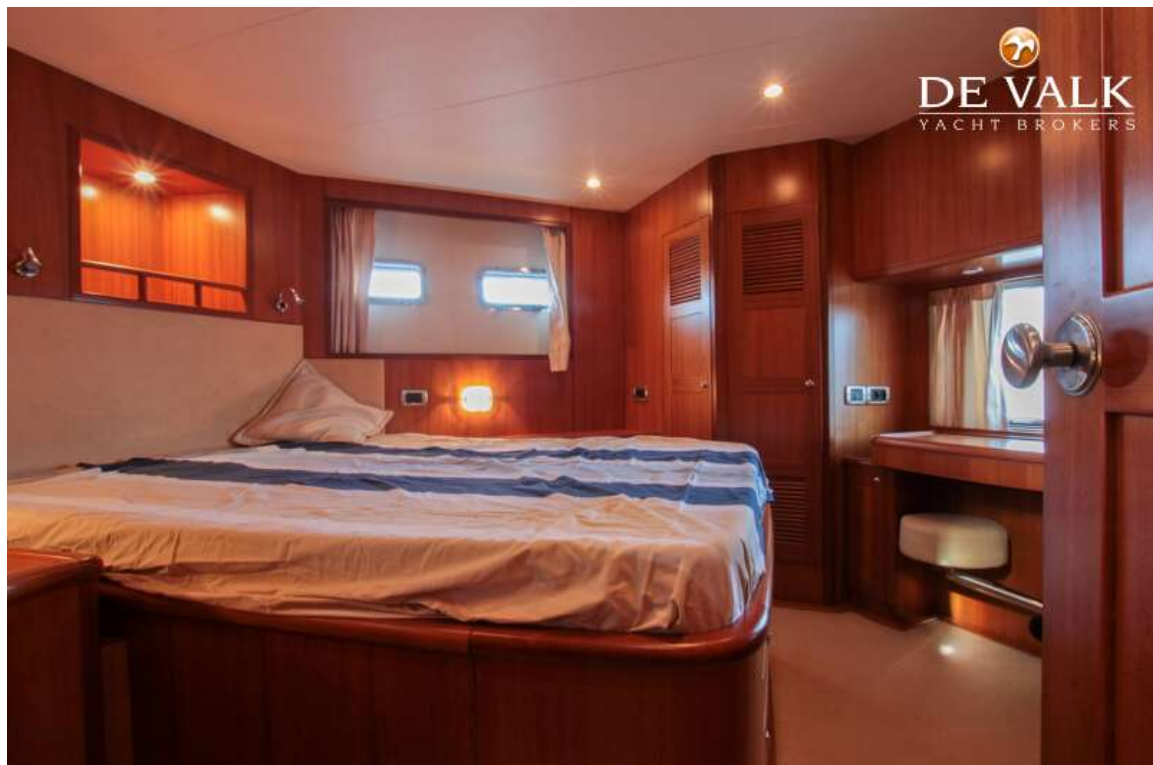


## TRADER 42 SIGNATURE

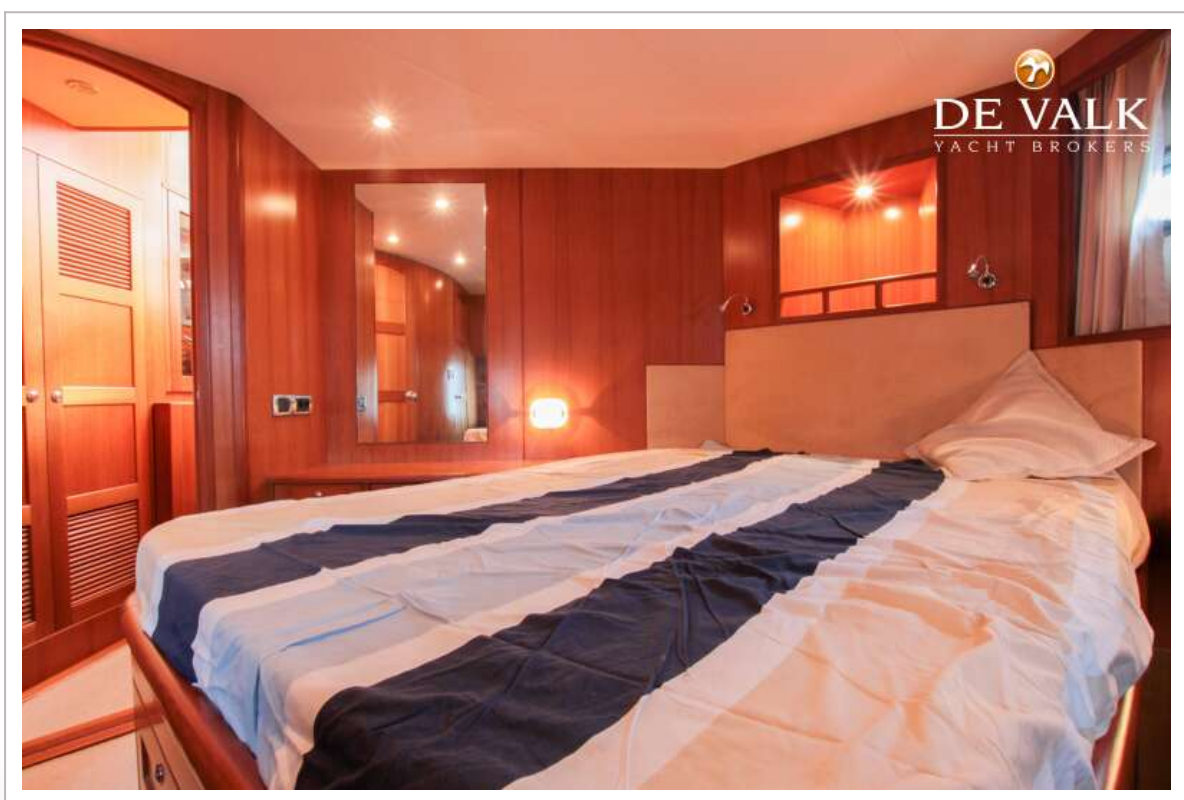
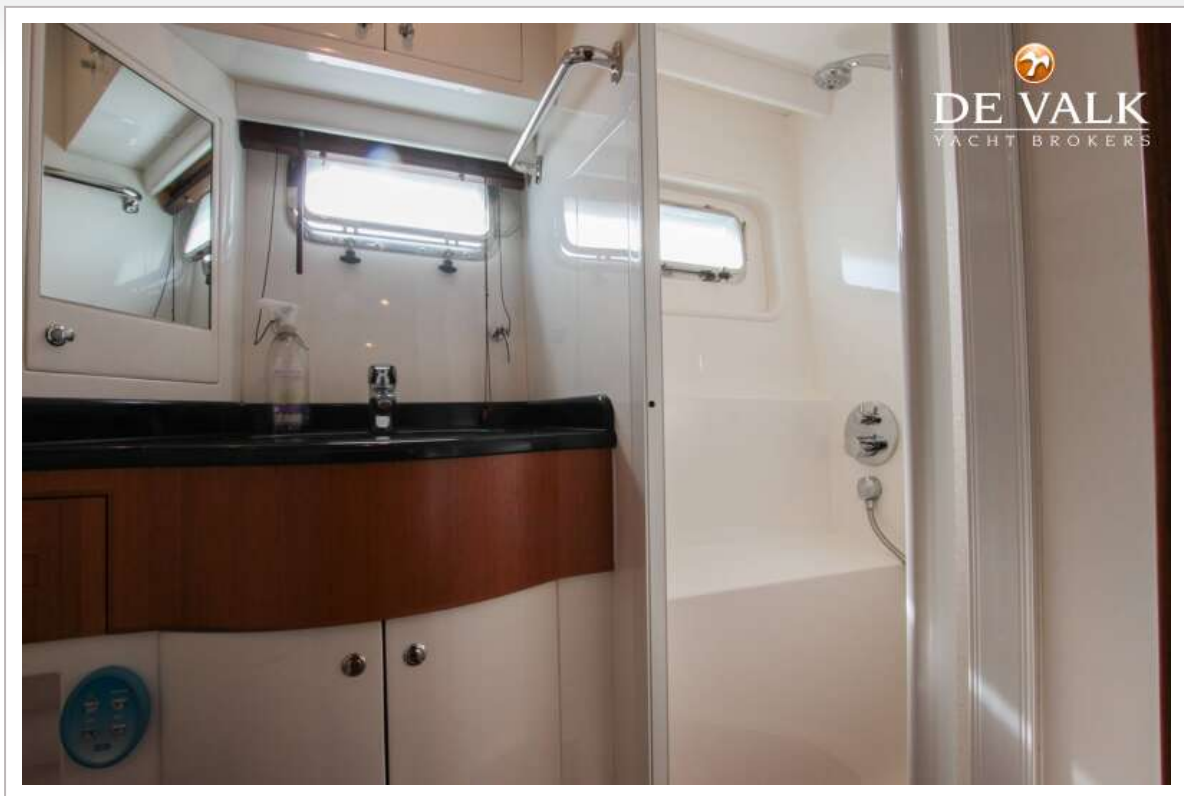




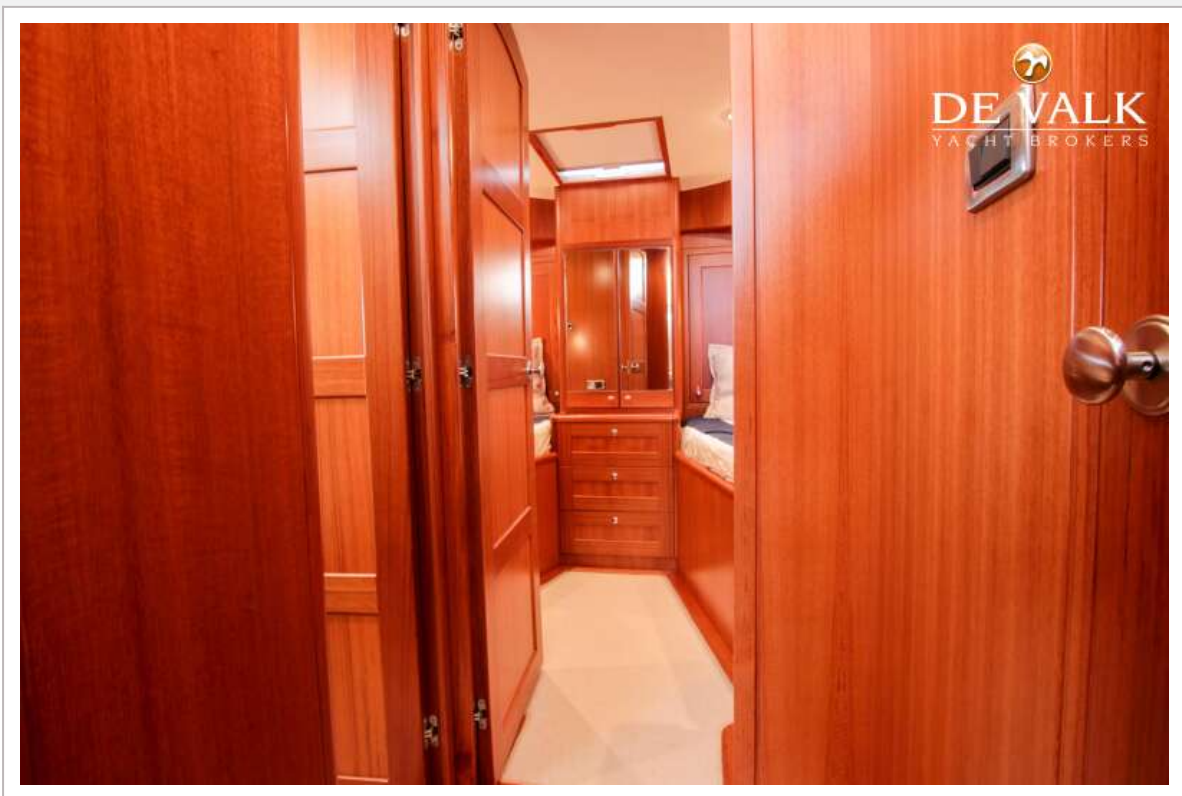
## TRADER 42 SIGNATURE



# TRADER 42 SIGNATURE



# TRADER 42 SIGNATURE

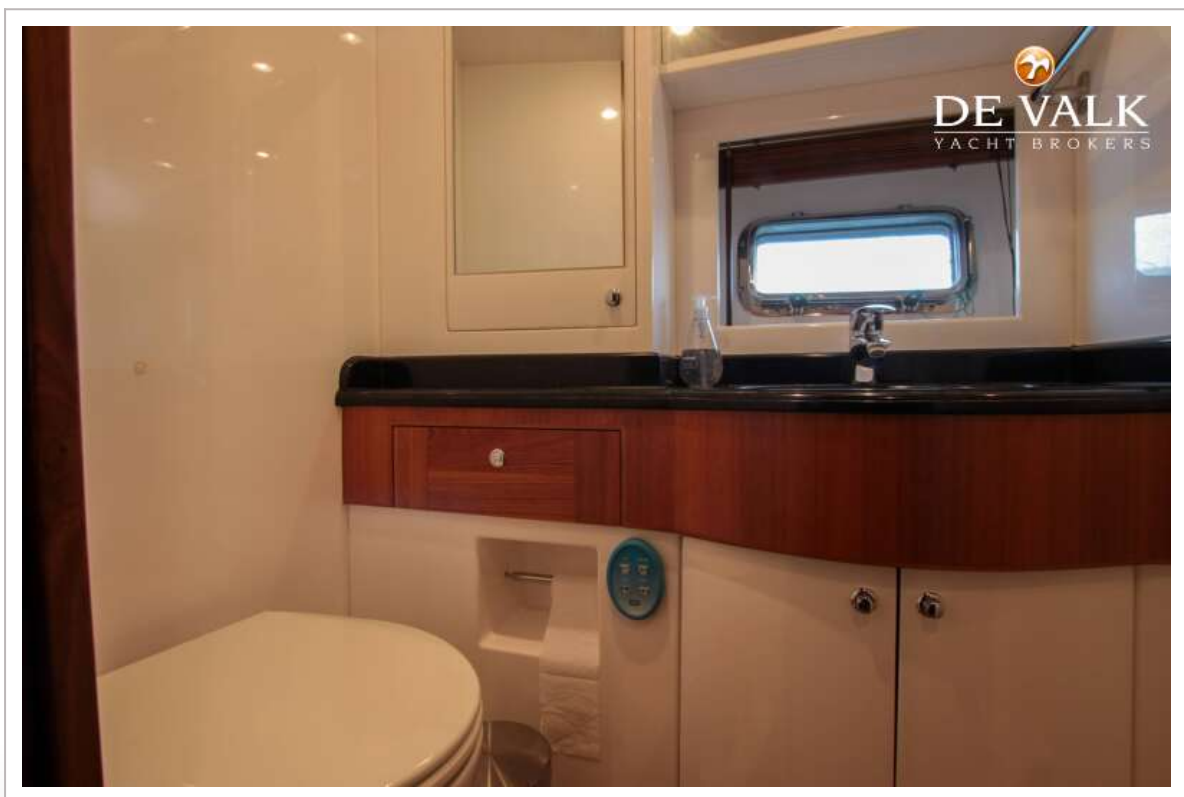
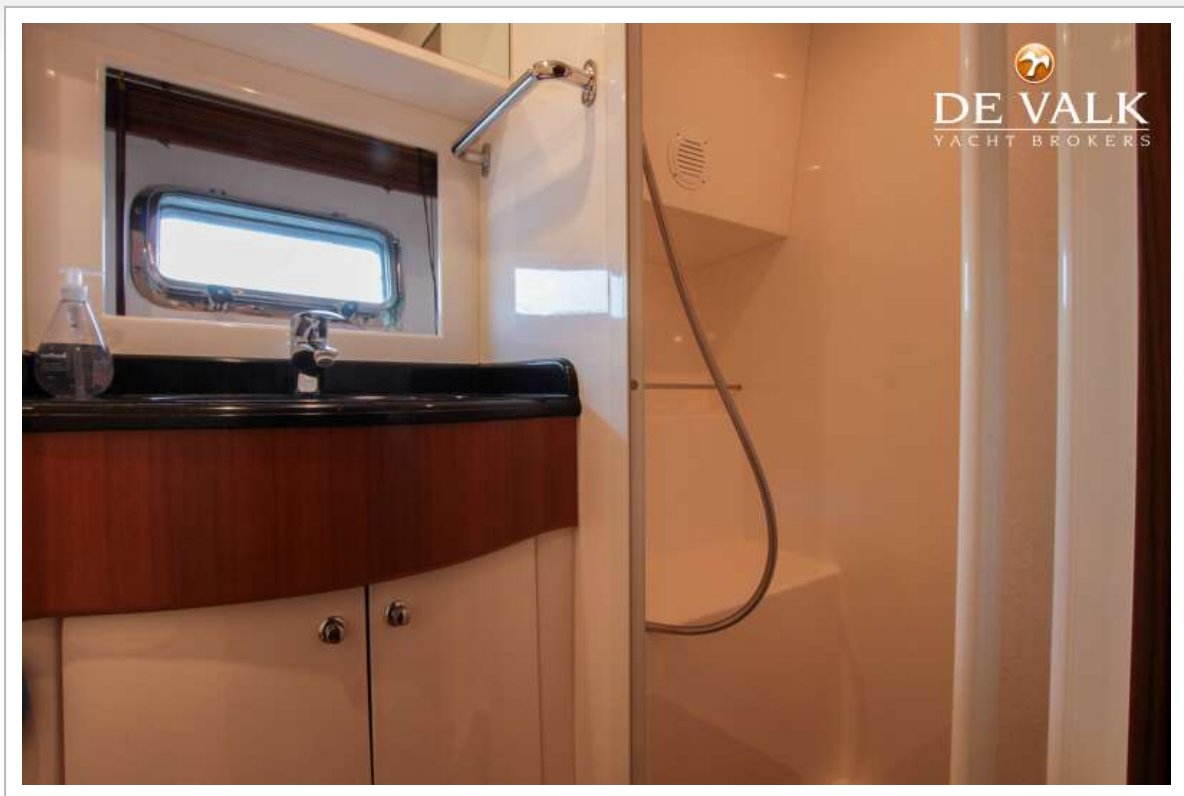




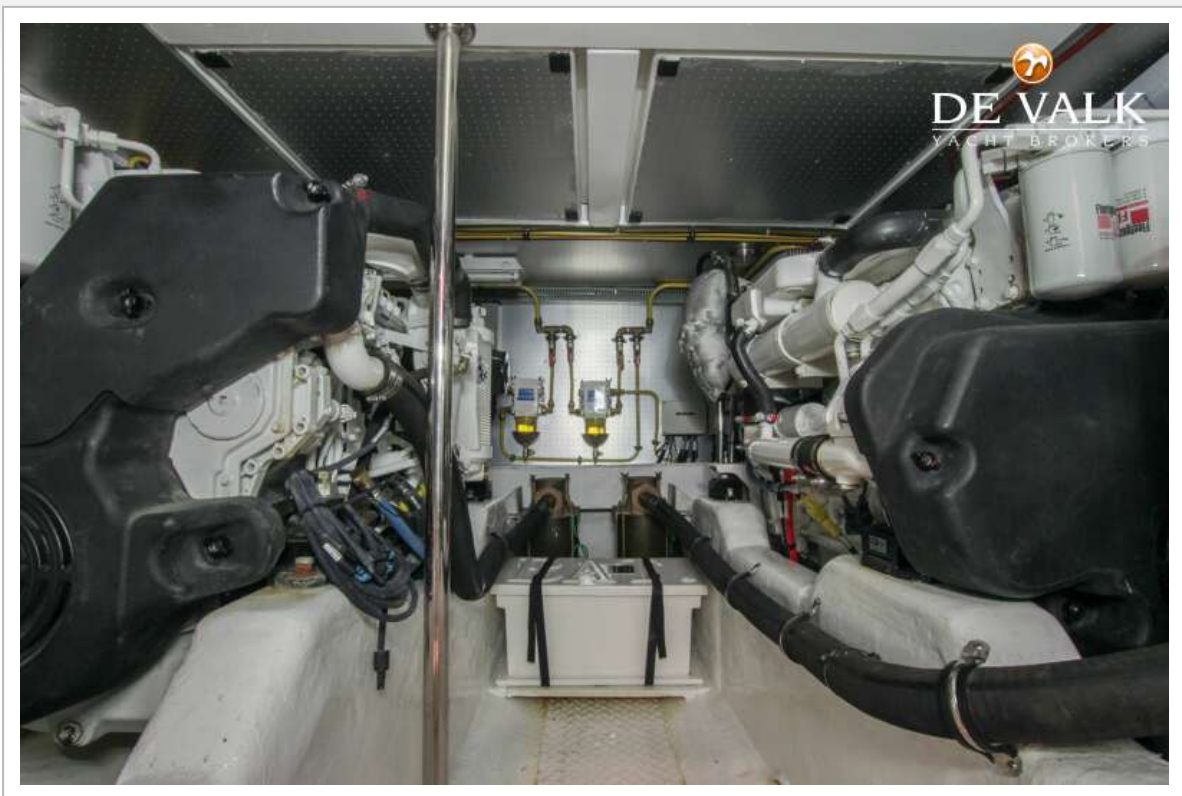
# TRADER 42 SIGNATURE



## TRADER 42 SIGNATURE



## TRADER 42 SIGNATURE





# TRADER 42 SIGNATURE

