



HANSE 531E



BROKER'S COMMENTS

This Hanse 531e, built of epoxy and designed by the renowned Judel/Vrolijk & Co, offers the perfect combination of performance and luxury. As the first owner, they have maintained the yacht in perfect condition. Onboard, you'll find a spacious layout featuring a luxurious owner's cabin and two comfortable guest cabins, each with its own private bathroom. The grand living area and fully equipped kitchen include two refrigerators, air conditioning, a generator, and state-of-the-art B&G navigation instruments. Included delivery to any location within the Mediterranean!

Arjen Hoeksma

SPECIFICATIONS

Dimensions	16.15 x 4.91 x 2.85 (m)	Builder	Hanse Yachts AG
Built	2005	Cabins	4
Material	GRP	Berths	9
Engine(s)	1 x Yanmar 4JH 36 diesel	Hp/Kw	100.00 (hp), 73.50 (kw)
Asking price	€ 289.000 (VAT Paid)	Lying	Croatia

CONTACT

Sales office	De Valk Dalmatia	Telephone	+385 914 567 834
Address	Ul. Velimira Skorpika 22000 Sibenik HR	E-mail	dalmatia@devalk.nl

DISCLAIMER

These particulars are given in good faith as supplied but cannot be guaranteed.



GENERAL

Model	HANSE 531E
Type	sailing yacht
LOA (m)	16,15
LWL (m)	14,60
Beam (m)	4,91
Draft (m)	2,85
Air draft (m)	26,50
Year built	2005
Launched	2006
Builder	Hanse Yachts AG
Country	Germany
Designer	Judel / Vrolijk & Co
Displacement (t)	19
CE norm	A
Hull material	GRP
Hull colour	silver gray AWL grip 2022 metallic
Hull shape	round-bilged
Keel type	bulb keel
Superstructure material	epoxy and foam core
Deck material	GRP
Deck finish	synthetic teak Treadmaster
Superstructure deck finish	synthetic teak
Cockpit deck finish	synthetic teak
Antifouling (year)	2024 Speedy Carbon
Dorades	yes
Window frame	aluminium
Deckhatch	With covers
Portholes	aluminium Lewmar 2020
Fuel tank (litre)	stainless steel Approx. 400
Level indicator (fuel tank)	yes



Freshwater tank (litre)	stainless steel Approx. 750
Level indicator (freshwater)	yes
Blackwater tank (litre)	stainless steel
Level indicator (blackwater)	yes
Blackwater tank extraction	deck extraction
Wheel steering	cable steering 2x leather + covers
Outside helm position	yes
Emergency tiller	yes
Extra info	Professionally maintained with a dedicated skipper

ACCOMMODATION

Cabins	4
Berths	9
Crew cabin	In bow with toilet and basin
Crew berths	1
Interior	ash
Floor	vinyl In salon, carpet in cabins
Open cockpit	yes
Heating	diesel ducted hot air SB and BB cabin 2x Webasto
Air-conditioning	In Master Cabin
Chart table	yes
Galley	yes
Countertop	corian
Sink	yes
Cooker	calor gas 3 burner
Oven	yes
Microwave	yes
Fridge	2x 70 liter with freezing compartment (1x)
Freezer	yes
Hot water system	220V + engine
Water pressure system	electrical



Kettle	yes
Coffee maker	yes
Crockery	yes
Owners cabin	v-bed
Wardrobe	hanging/drawers/shelves
Bathroom	en suite
Toilet	en suite
Toilet system	electric
Wash basin	in the bathroom
Shower	en suite
Guest cabin 1	double bed + single bed
Wardrobe	hanging/drawers/shelves
Bathroom	en suite
Toilet	en suite
Toilet system	electric
Wash basin	in the bathroom
Shower	en suite
Guest cabin 2	double bed + single bed
Wardrobe	hanging/drawers/shelves
Bathroom	en suite
Toilet	en suite
Toilet system	electric
Wash basin	in the bathroom
Shower	en suite
Guest cabin 3	single bed Skipper
Wardrobe	hanging and shelves
Toilet	en suite
Toilet system	electric
Wash basin	at the toilet

MACHINERY



No of engines	1
Make	Yanmar
Type	4JH 36
HP	100
kW	73.50
Fuel	diesel
Maximum speed (kn)	7,5
Cruising speed (kn)	6
Engine cooling system	seawater
Drive	shaft
Engine controls	mechanical
Gearbox	mechanical
Engine controls	bowden cable
Bowthruster	electric Retractable, Maxprop
Exhaust	watercooled
Propeller type	Maxprop folding
Propeller blades	3
Propeller shaft material	stainless steel
Shaft lubrication	water
Manual bilge pump	1x
Electric bilge pump	3x
Generator	Mastervolt 3,5 kW
Batteries	2024
Start battery	yes
Service battery	yes
Bowthruster battery	yes
Battery monitor	yes
Battery charger	Mastervolt MASS 24v/100A
Inverter	yes
Battery charger/inverter	yes
Shorepower	with cable
Extra info	Engine and generator service yearly



NAVIGATION

Compass	yes
Electric compass	B&G Precision 9
Depth sounder	yes
Depth sounder/log	B&G
Windset	B&G Wind sensor 508
Repeater	B&G Triton 2
VHF	B&G V50
VHF handheld	B&G H50
Autopilot	B&G AC42 with remote control B&G WR10
Wind vane steering install.	yes
Rudder angle indicator	B&G RF25
Radar	B&G w3G
GPS	yes
Plotter/GPS	B&G Zeus EVO 3s-12 2024
Radar/plotter	B&G
Radar/GPS/plotter	B&G partly in 2017 and 2022 renewed
Navtex	Nav6
Wifi antenna	B&G goFREE wifi-1 Wlan
AIS receiver	yes
Navigation lights	LED
Extra info	Sirocco Ventilators all cabins
Extra info	Courtesy light in and outside

EQUIPMENT

Sprayhood with grab rail	yes
Bimini	With sunpanels
Cockpit cushions	yes
Cockpit table	With cover
Bathing platform	Hydraulic, with remote control
Boarding ladder	stainless steel



Gangway	yes
Deck shower	yes
Anchor	Rocna extra heavy
Anchor chain	Stainless steel
Anchor 2	Delta
Windlass	yes
Sea railing	Dyneema
Railing side opening gates	yes
Pushpit	yes
Pulpit	yes
Life raft	yes
Radar reflector	yes
Fenders	10 with cover
Mooring lines	yes
Spare parts	yes
TV	2024
Radio-cd player	Clarion
Surround Sound System	yes
Sub-woofer	yes
Cockpit speakers	yes
Clock - barometer	yes
Fire extinguisher	yes
Extra info	Covers dashboards, windows,
Extra info	From the first owner, never chartered en (Dutch) VAT paid.

RIGGING

Rigging	fractional 7/8
Brand mast	Seldén
Material mast	aluminium
Spreaders	2x



Mainsail	Macros Double Taffeta Grey and Vectran reinforced mainsail White
Mainsail cover	yes
Stoway mast	Furling boom with led lights
Jib	Self tacking jib White
Genoa	Dark grey
Genoa furler	yes
Code Zero	White
Gennaker	yes
Stormjib	Orange
Reefing System	main in-boom furling
Backstay adjuster	hydraulic
Boomvang	gasspring
Primary sheet winch	Electric
Secondary sheet winch	yes
Genoa sheetwinches	Harken ST53
Halyard winches	All hallyards replaced 2020
Winchcovers	yes



HANSE 531E



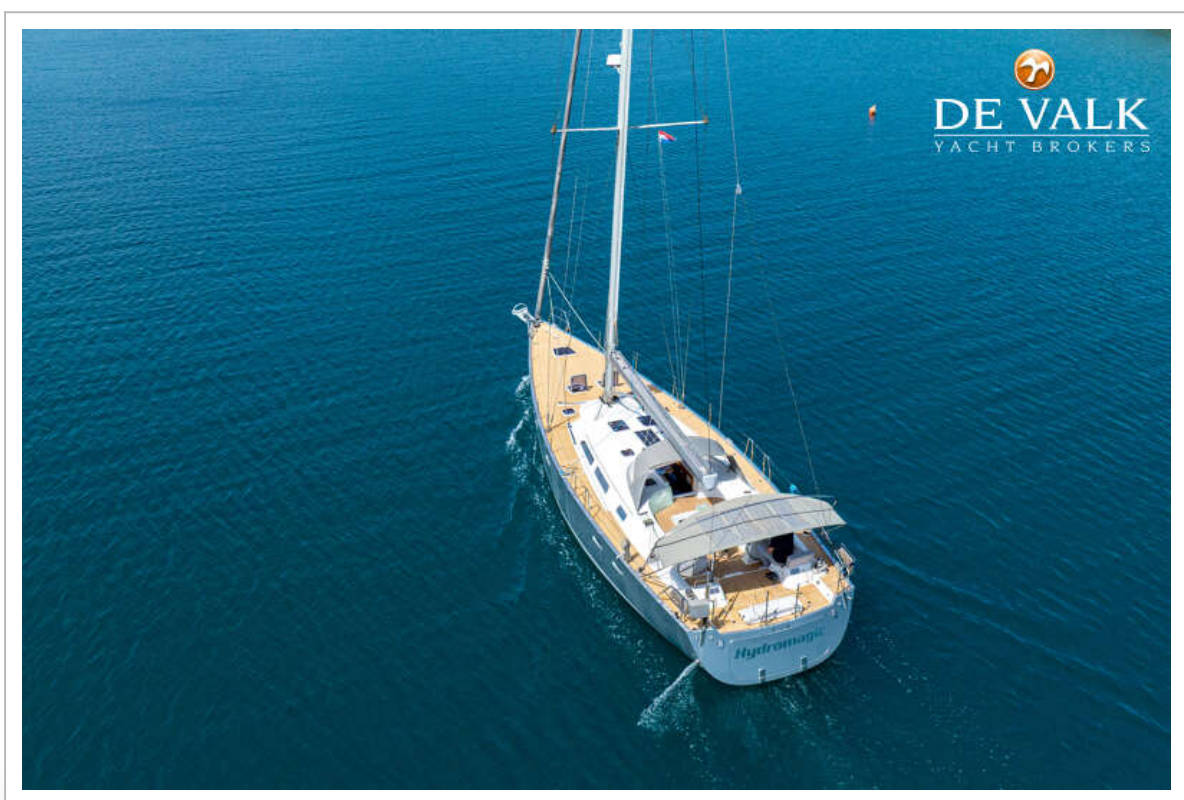
HANSE 531E

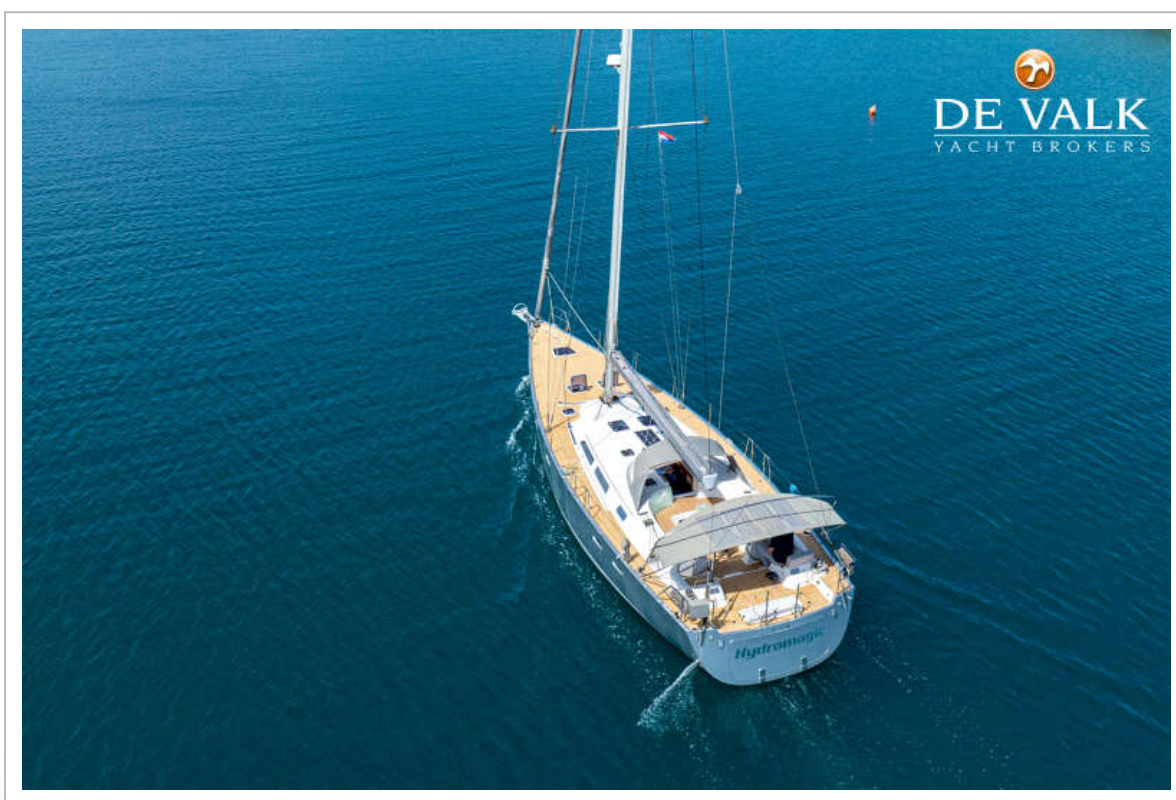


HANSE 531E

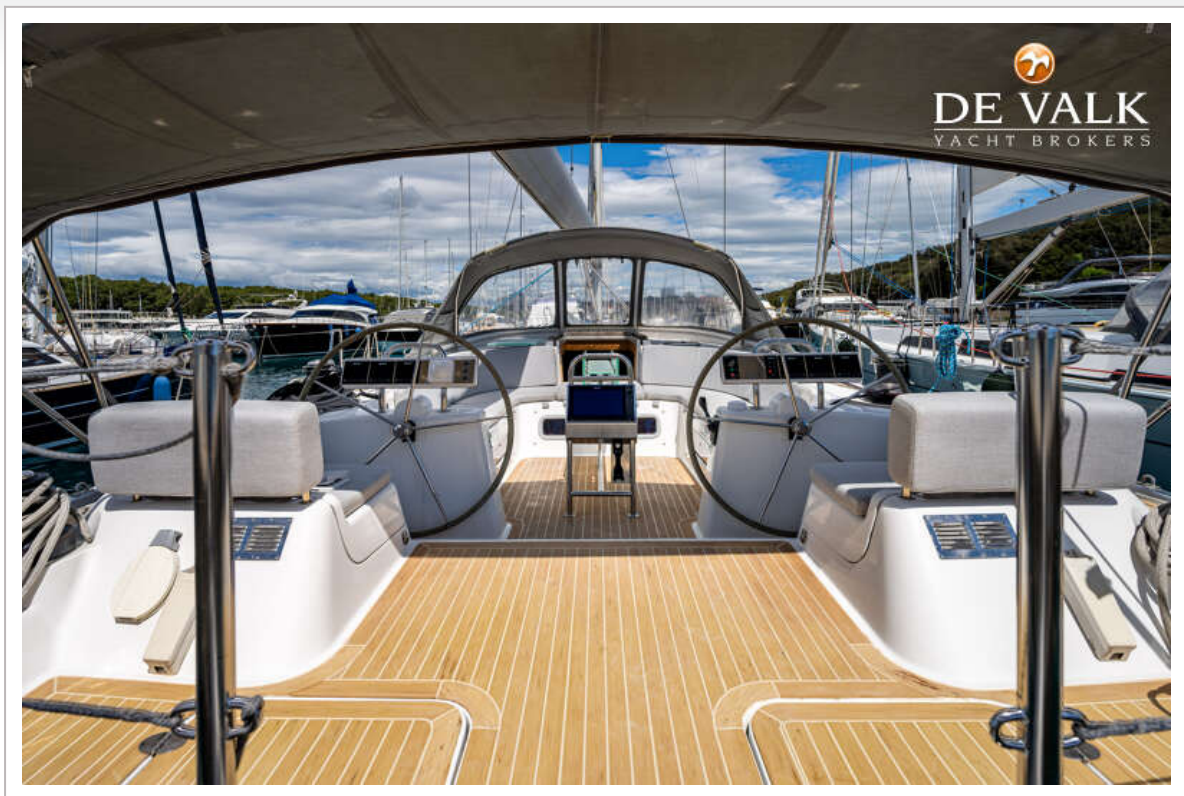


HANSE 531E





HANSE 531E



HANSE 531E



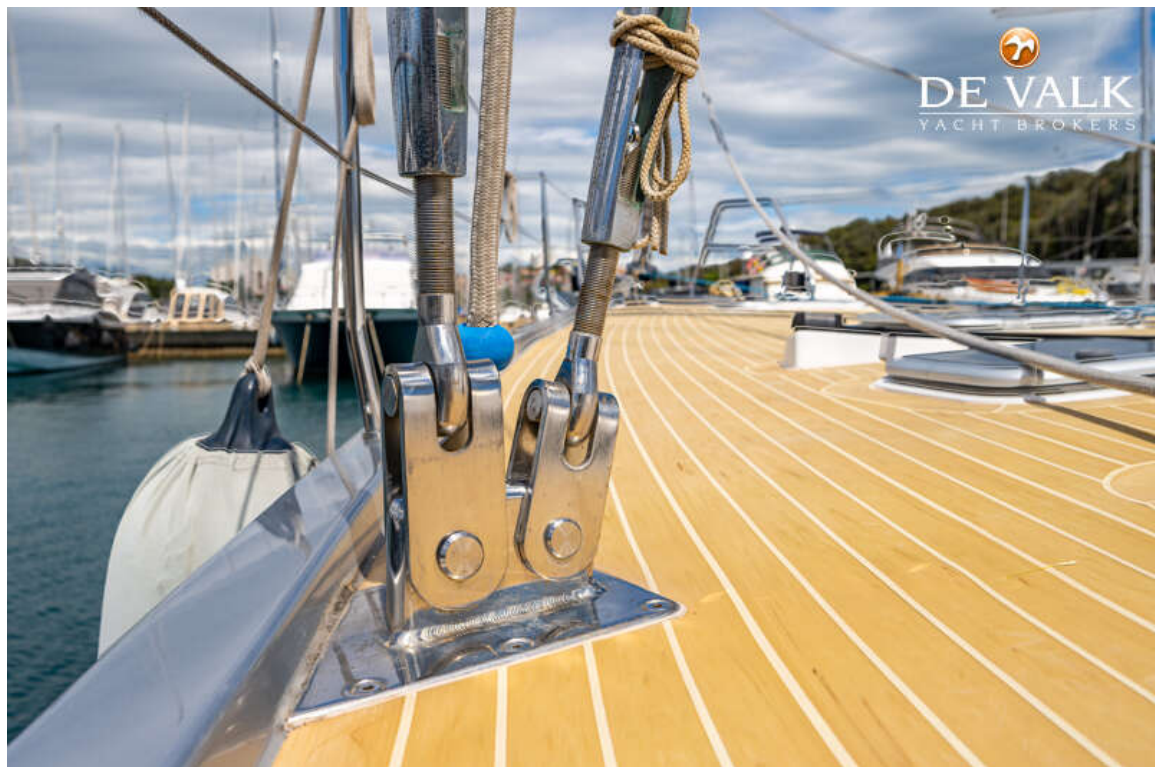
HANSE 531E



HANSE 531E



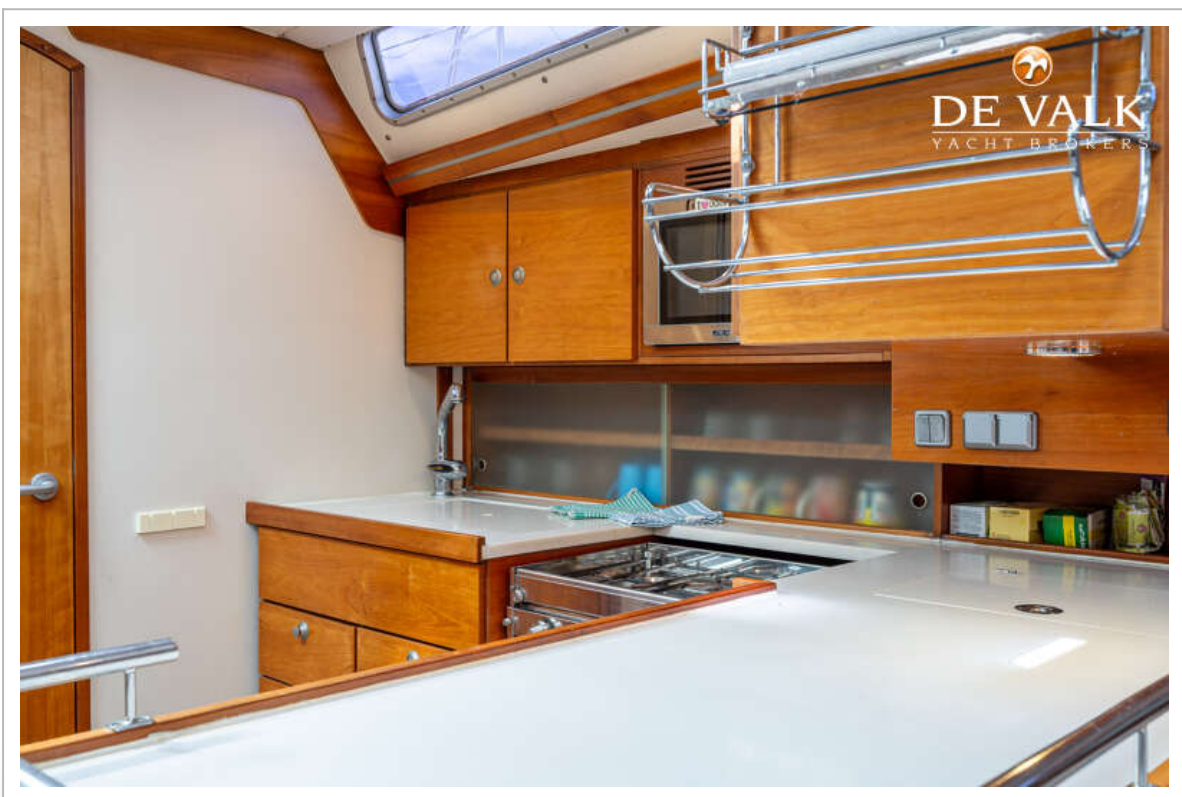
HANSE 531E



HANSE 531E



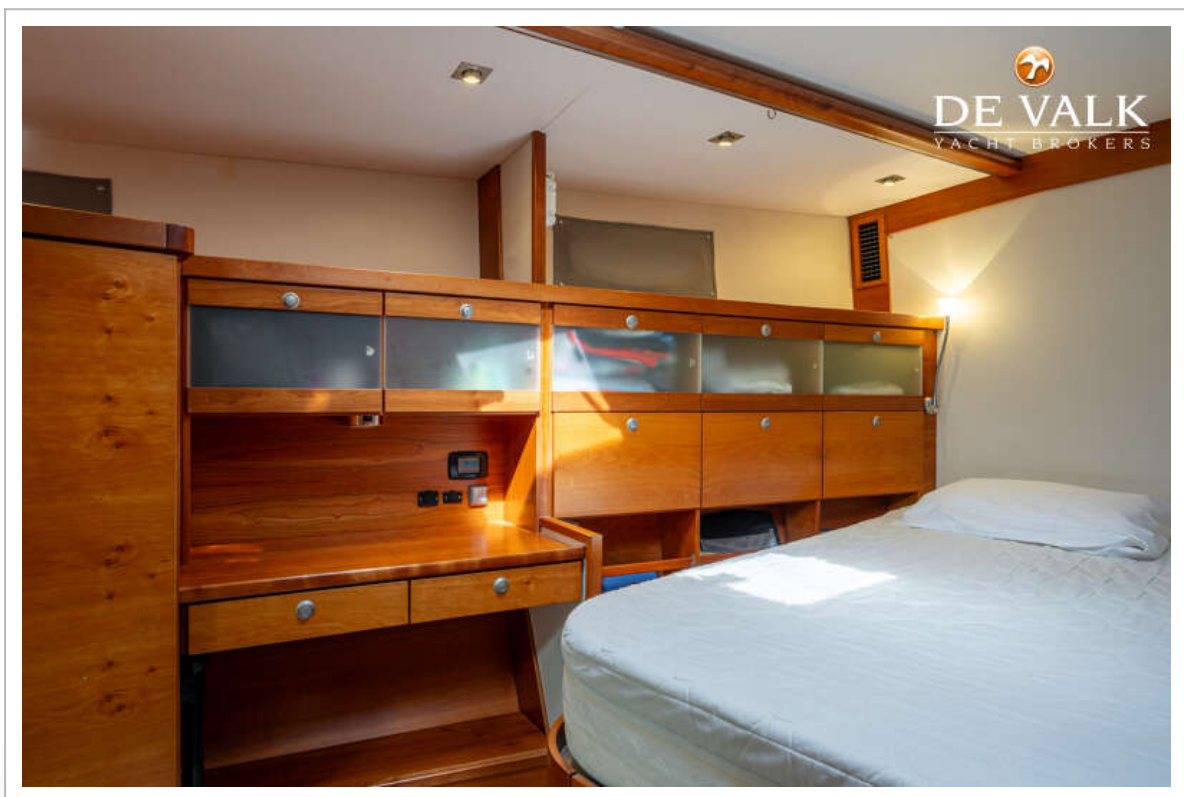
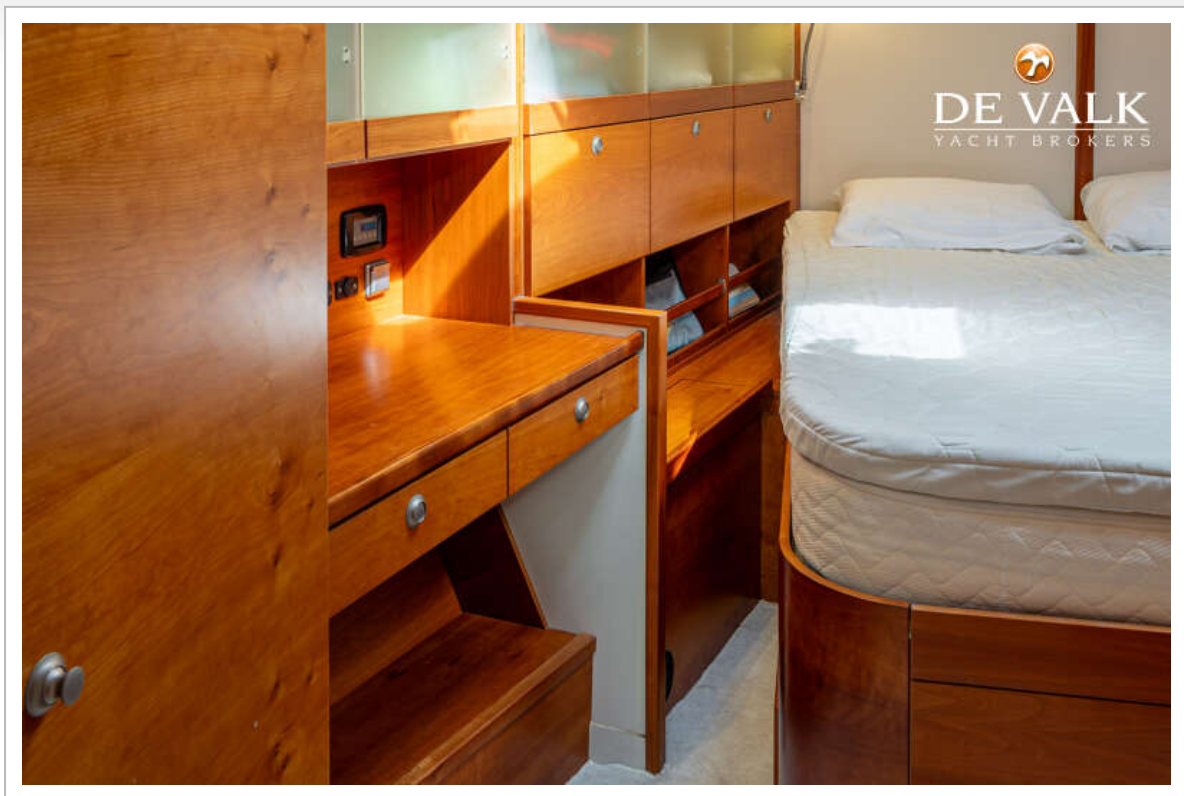
HANSE 531E



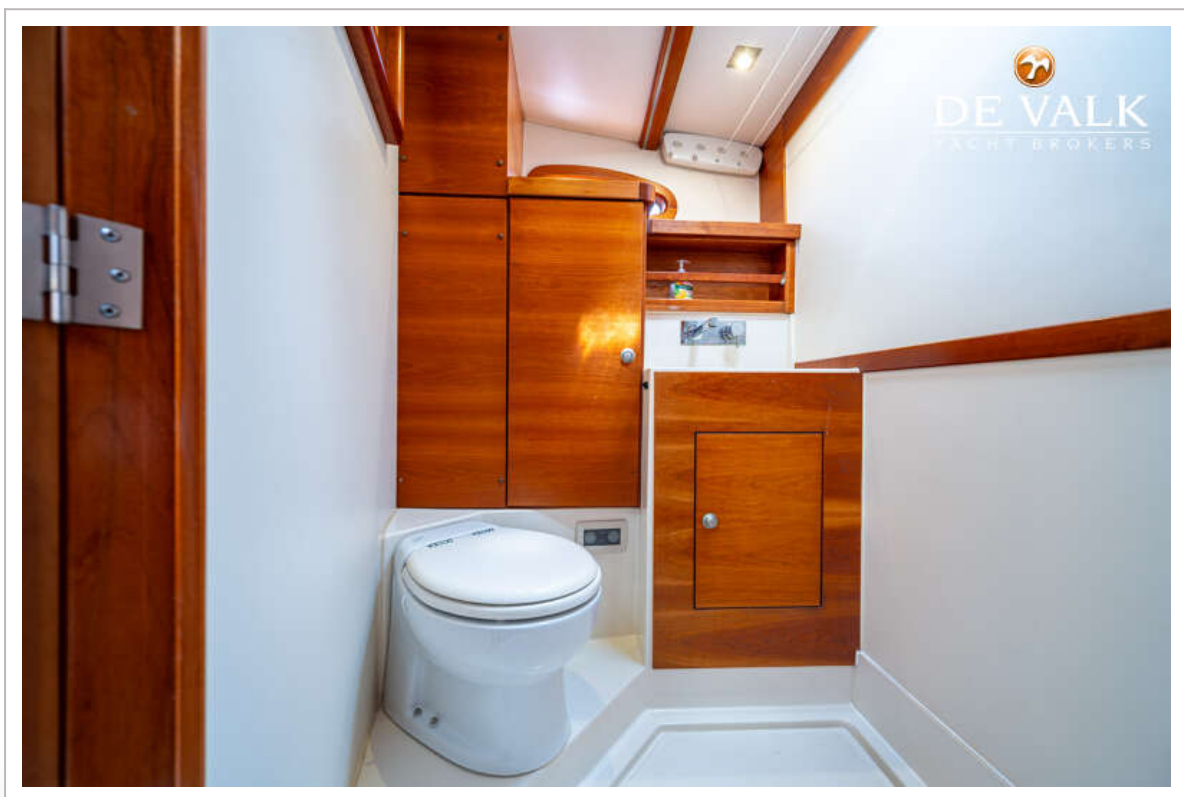
HANSE 531E



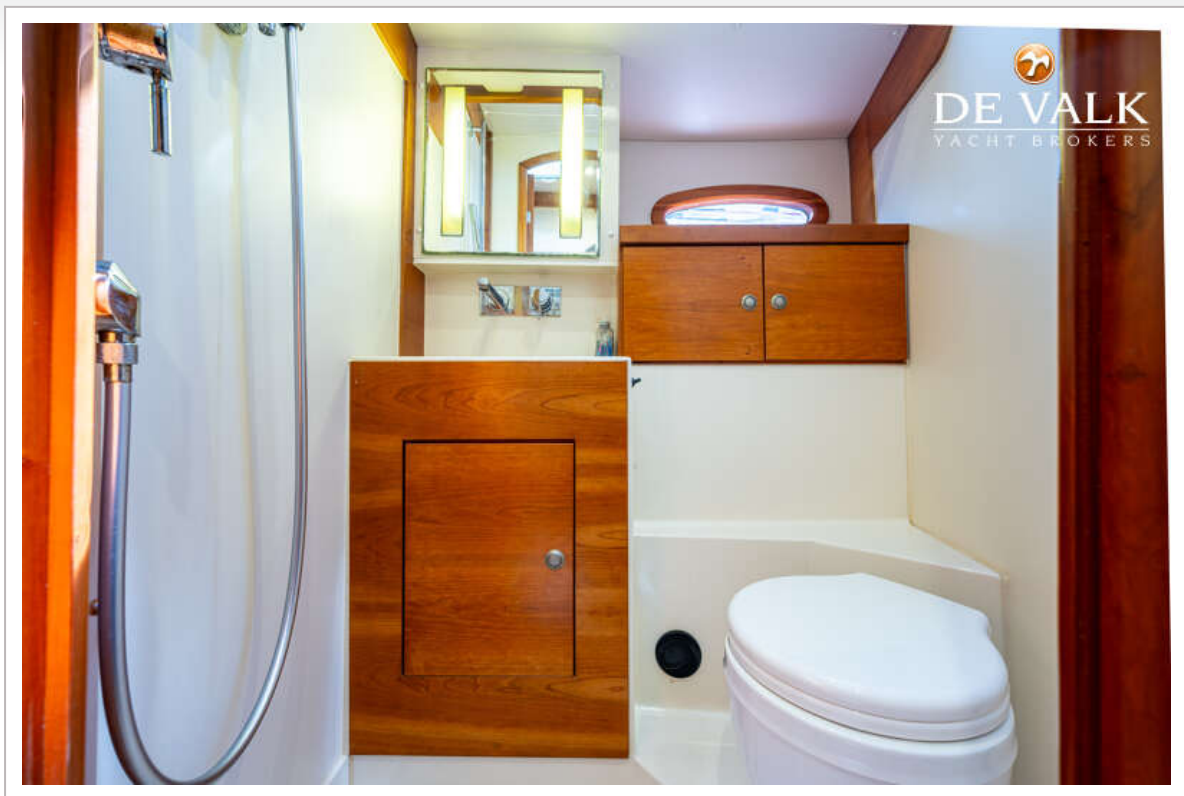
HANSE 531E



HANSE 531E



HANSE 531E



HANSE 531E

