



DE VALK  
YACHT BROKERS



## DE RUITER KOTTER 1350 AK



DE VALK  
YACHT BROKERS

# DE RUITER KOTTER 1350 AK

## BROKER'S COMMENTS

The Ruiter Kotter is a boat built for comfort and space. She has an incredibly beautiful bow which immediately draws the attention. The back of the ship is equipped with stainless davids, to transport the dinghy properly during your trip. On the deck you will find a large window which brings light into the saloon, this brings a spacious feeling in the boat. The boat is equipped with both inside and outside steering, giving you a good overview.

**Mark Hesselmans**

## SPECIFICATIONS

<b>Dimensions</b>	13.50 x 4.50 x 1.40 (m)	<b>Builder</b>	De Ruiter
<b>Built</b>	1980	<b>Cabins</b>	2
<b>Material</b>	Steel	<b>Berths</b>	4
<b>Engine(s)</b>	2 x Ford Lehman 2715E diesel	<b>Hp/Kw</b>	2 x 120.00 (hp), 88.20 (kw)
<b>Asking price</b>	sold (VAT )	<b>Lying</b>	at sales office

## CONTACT

<b>Sales office</b>	De Valk Loosdrecht B.V.	<b>Telephone</b>	+31 (0)35 582 90 30
<b>Address</b>	't Breukeleveense Meentje 6 1231LM Loosdrecht / Wijdmeren NL	<b>E-mail</b>	loosdrecht@devalk.nl

## DISCLAIMER

These particulars are given in good faith as supplied but cannot be guaranteed.



# DE RUITER KOTTER 1350 AK

## GENERAL

Model	DE RUITER KOTTER 1350 AK
Type	motor yacht
LOA (m)	13,50
Beam (m)	4,50
Draft (m)	1,40
Air draft (m)	8,30
Air draft min (m)	3,45
Headroom (m)	1,90
Year built	1980
Launched	1980
Builder	De Ruiter
Country	The Netherlands
Designer	A. Volker
Displacement (t)	22
Hull material	steel
Hull colour	blue Professionally maintained every four years.
Hull shape	multi hard chine
Keel type	box keel
Superstructure material	steel
Rubbing strake	stainless steel
Deck material	steel
Deck finish	non-skid paint
Superstructure deck finish	non-skid paint
Cockpit deck finish	non-skid paint
Antifouling (year)	2020 with 8 new zinc anodes installed
Window frame	aluminium
Window material	glass
Deckhatch	Stainless steel
Portholes	aluminium 12 x
Insulation	rockwool



Flybridge cover	2018
Level indicator (fuel tank)	yes
Freshwater tank (litre)	stainless steel 500L 2x
Level indicator (freshwater)	Anoloog
Blackwater tank (litre)	stainless steel 150L
Level indicator (blackwater)	yes
Blackwater tank extraction	deck extraction + pump
Greywater tank (litre)	Into black water
Wheel steering	hydraulic
Inside helm position	yes
Flybridge helm position	hydraulic
More info on hull	Many high end stainless details
More info on paintwork	Fully maintained every 4 years

## ACCOMMODATION

Cabins	2
Berths	4
Interior	teak
Layout	Owner
Floor	parquet
Aft deck	yes
Saloon	yes
Headroom saloon (m)	2,00
Heating	diesel ducted hot air Webasto
Navigation center	yes
Aft Cabin	yes
Dinette to convert into berth	Lower salon
Opening door to aft deck	yes
Galley	Lower galley
Countertop	wood
Sink	stainless steel



# DE RUITER KOTTER 1350 AK

Cooker	calor gas 4 burner(s) Gas
Gas alarm	Gas detector Bep Marine - Matrix
Microwave/oven combi	Silver Crest
Fridge	Isotherm
Water pressure system	electrical 2021
Owners cabin	double bed
Bed length (m)	2,00
Wardrobe	hanging and shelves
Bathroom	en suite Fully replaced and modernized 2018 with shower walls
Toilet	shared CER Broyeur new installed year 2018
Toilet system	electric Installed year 2021
Wash basin	in the bathroom New 2018
Shower	shared Equiped with Grohe and installed year 2018
Guest cabin 1	twin single
Bed length (m)	2,00
Wardrobe	hanging and shelves
Extra info	All documentation available

## MACHINERY

No of engines	2
Make	Ford Lehman
Type	2715E
HP	120
kW	88.20
Fuel	diesel
Year of overhaul	Fully serviced 2021 both engines
Maximum speed (kn)	8
Cruising speed (kn)	6
Engine hours	6000
Engine cooling system	freshwater heat exchanger
Drive	shaft



Shaft seal	yes
Engine controls	mechanical
Gearbox	hydraulic
Bowthruster	electric Sidepower 120 KGF - Diameter 2200mm - 24V new 2020
Exhaust	watercooled
Thrust bearing	Python drives 2014
Propeller type	fixed New 2014
Propeller blades	4
Propeller shaft material	stainless steel Replaced 2014
Shaft lubrication	water
Manual bilge pump	yes
Electric bilge pump	2x
Electrical installation	12 & 24 V DC & 220 V AC
Batteries	3x 140 amp 2x are new installed year 2021
Start battery	yes
Service battery	yes
Bowthruster battery	yes
Battery monitor	BMV-600S Victron Energy
Battery charger	Victron Phoenix 24V / 2000VA
Battery charger/inverter	Victron Energy Blue Power

## NAVIGATION

Compass	Inside compass not working
Compass on flybridge	yes
Electric compass	yes
Depth sounder	Raymarine
Windset	Raymarine
VHF	2x one inside and one on flybridge.
Rudder angle indicator	Analoog
Radar	Raymarine



GPS	Raymarine C120
Plotter	Raymarine C120
Navigation lights	With stainless holder boxes 2018
Searchlight	yes

## EQUIPMENT

Fixed windscreen	Flybridge
Sprayhood	yes
Cockpit cover	yes
Cockpit chairs	Stainless steel integrated in pushpit
Boarding ladder	aluminum
Gangway	Stainless Steel with tearplate new 2018
Anchor	Fortress Stainless Steel
Anchor chain	Stainless Steel
Windlass	electrical Vetus
Deck wash	Both fresh and seawater
Davits	stainless steel Manuel
Sea railing	Mirror 8 polished heavy oval profile new 2018
Grab rail (superstructure)	stainless steel
Railing side opening gates	yes
Pushpit	Stainless steel oval new 2018
Pulpit	Stainless steel oval new 2018
Wiper	4x
Clearview window	Not working
Horn	air pressure
Fenders	yes
Mooring lines	yes
Spare parts	yes
Tools	yes
TV	LG Smart TV new 2020 for internet streaming
TV receiver	yes



Radio	yes
Radio-cd player	yes
Speakers in salon	Speaker installed Blaupunkt
Fire extinguisher	yes

## RIGGING

Rigging	ketch-cutter Only aft mast
Standing rigging	wire
Material mast	aluminium
Mast lowering system	See Radar mast
Mainsail	yes
Mainsail cover	yes





# DE RUITER KOTTER 1350 AK



# DE RUITER KOTTER 1350 AK



# DE RUITER KOTTER 1350 AK





# DE RUITER KOTTER 1350 AK



# DE RUITER KOTTER 1350 AK



# DE RUITER KOTTER 1350 AK

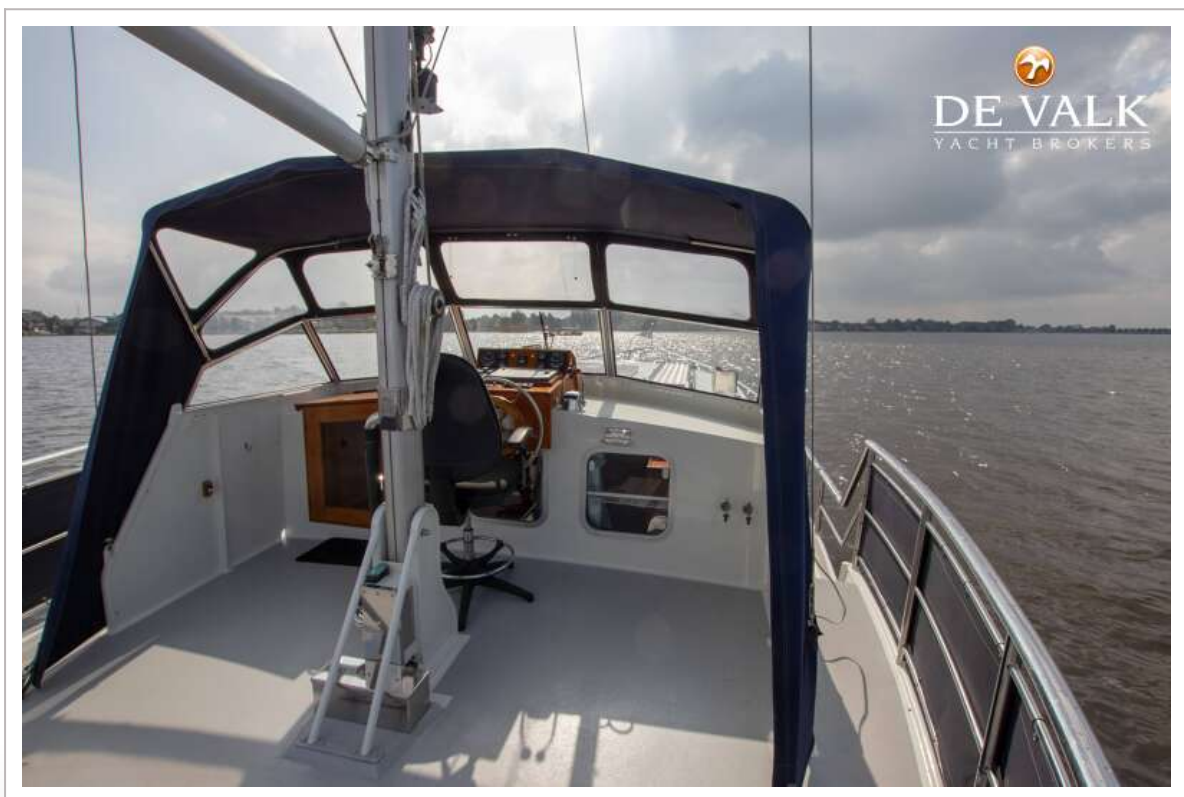




# DE RUITER KOTTER 1350 AK



# DE RUITER KOTTER 1350 AK





# DE RUITER KOTTER 1350 AK



# DE RUITER KOTTER 1350 AK

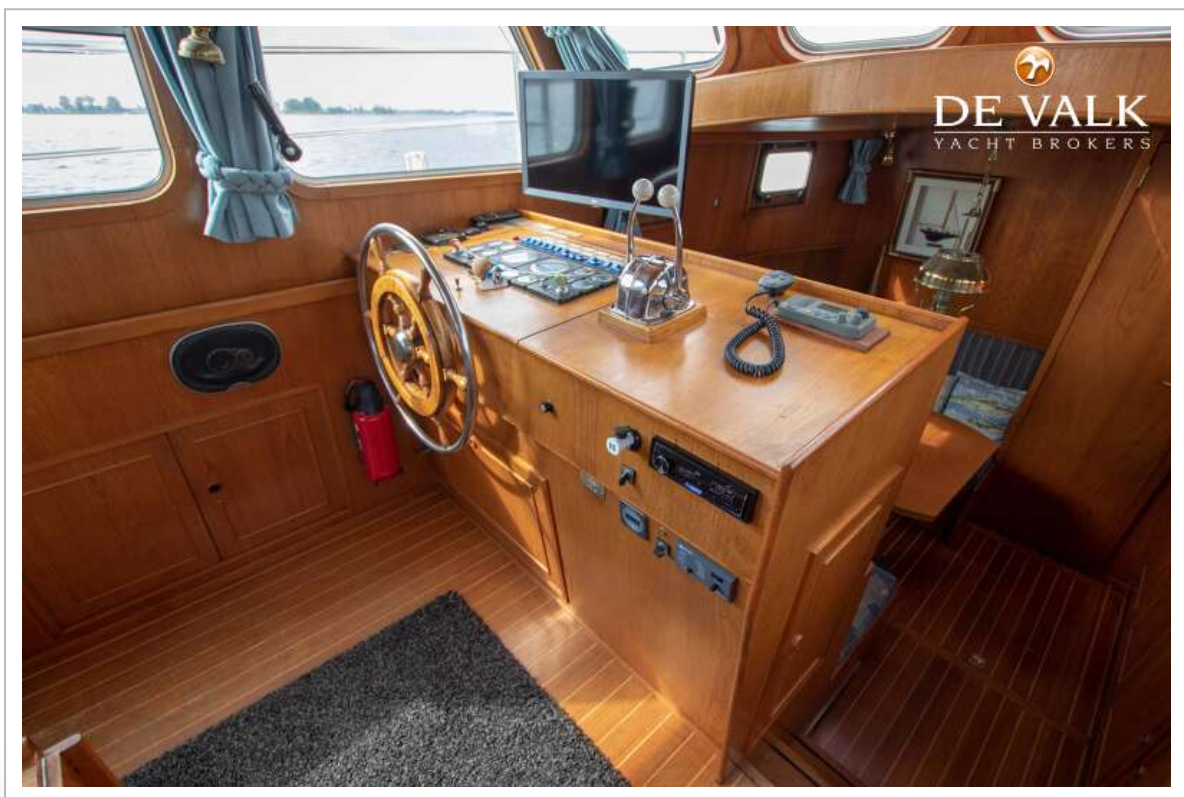
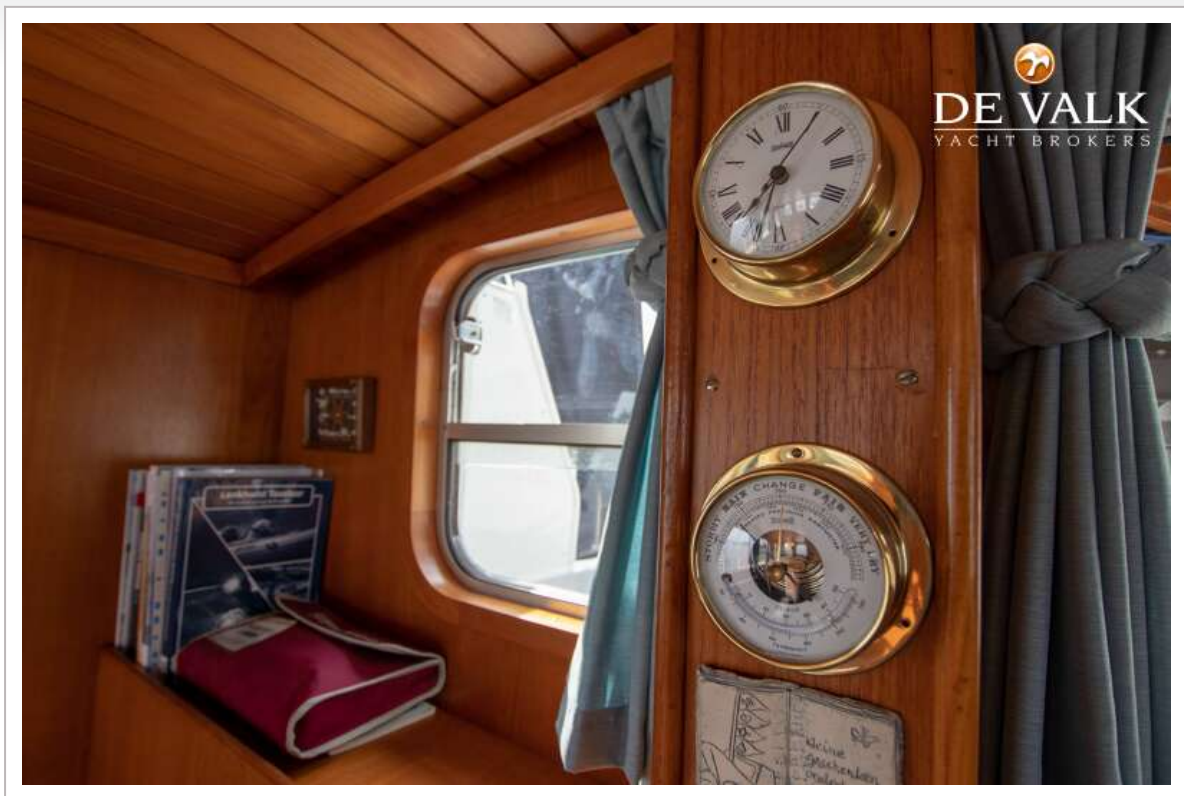




# DE RUITER KOTTER 1350 AK

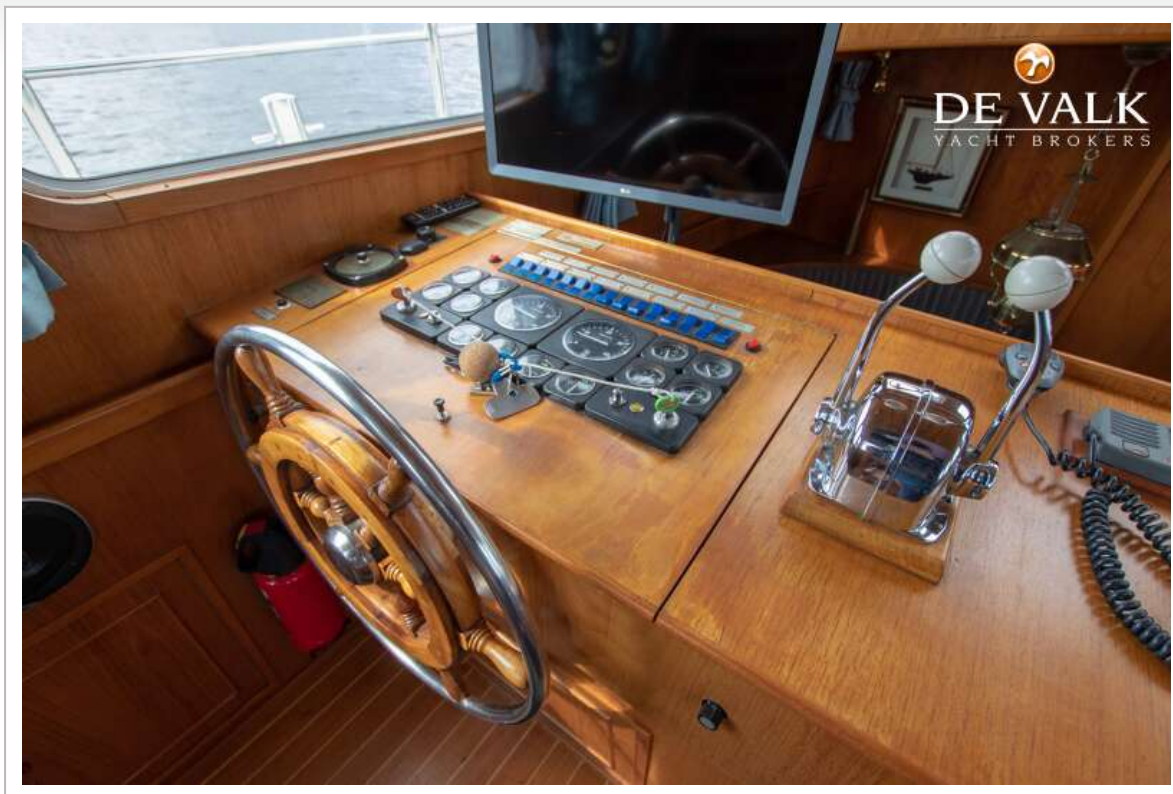


# DE RUITER KOTTER 1350 AK





# DE RUITER KOTTER 1350 AK

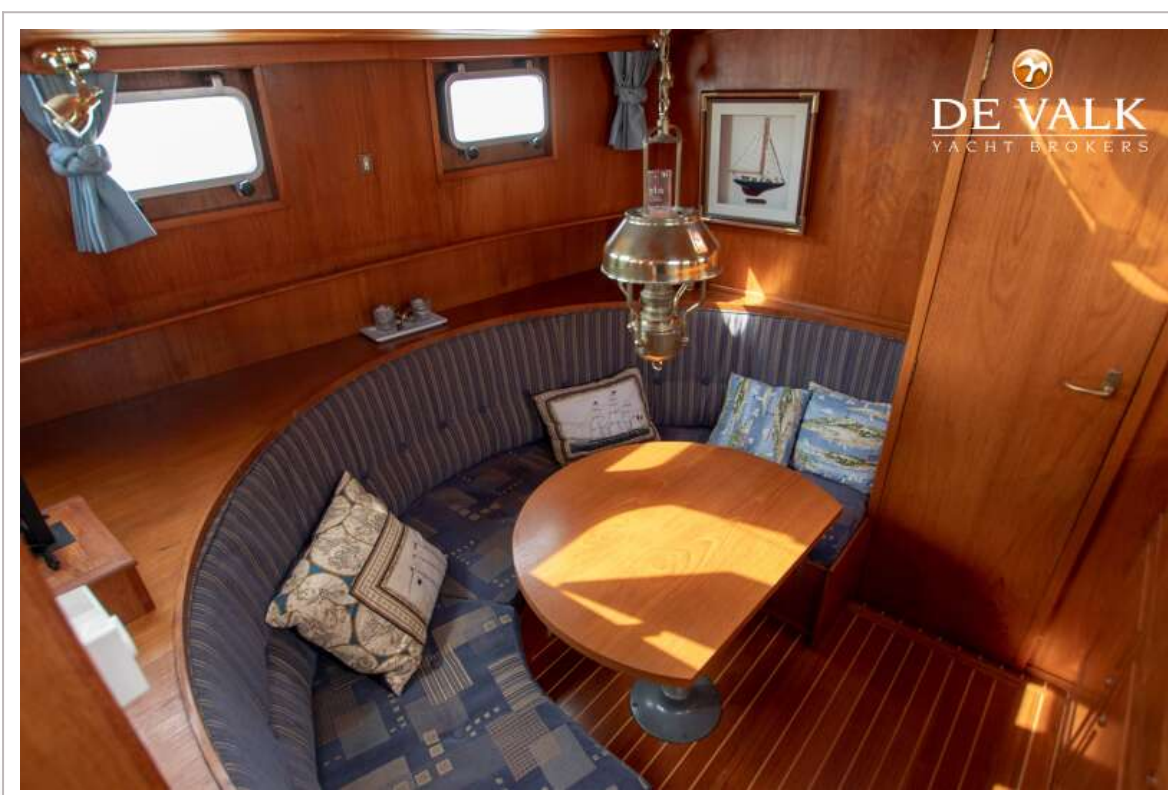




# DE RUITER KOTTER 1350 AK

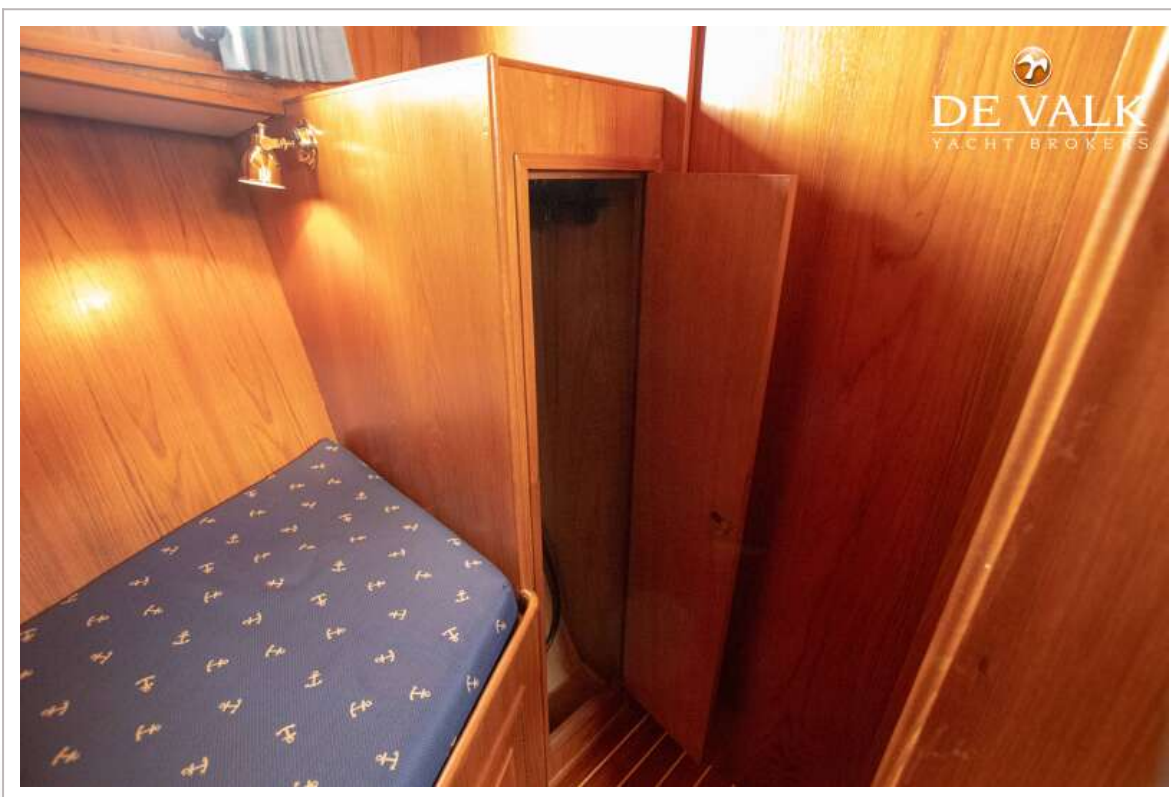
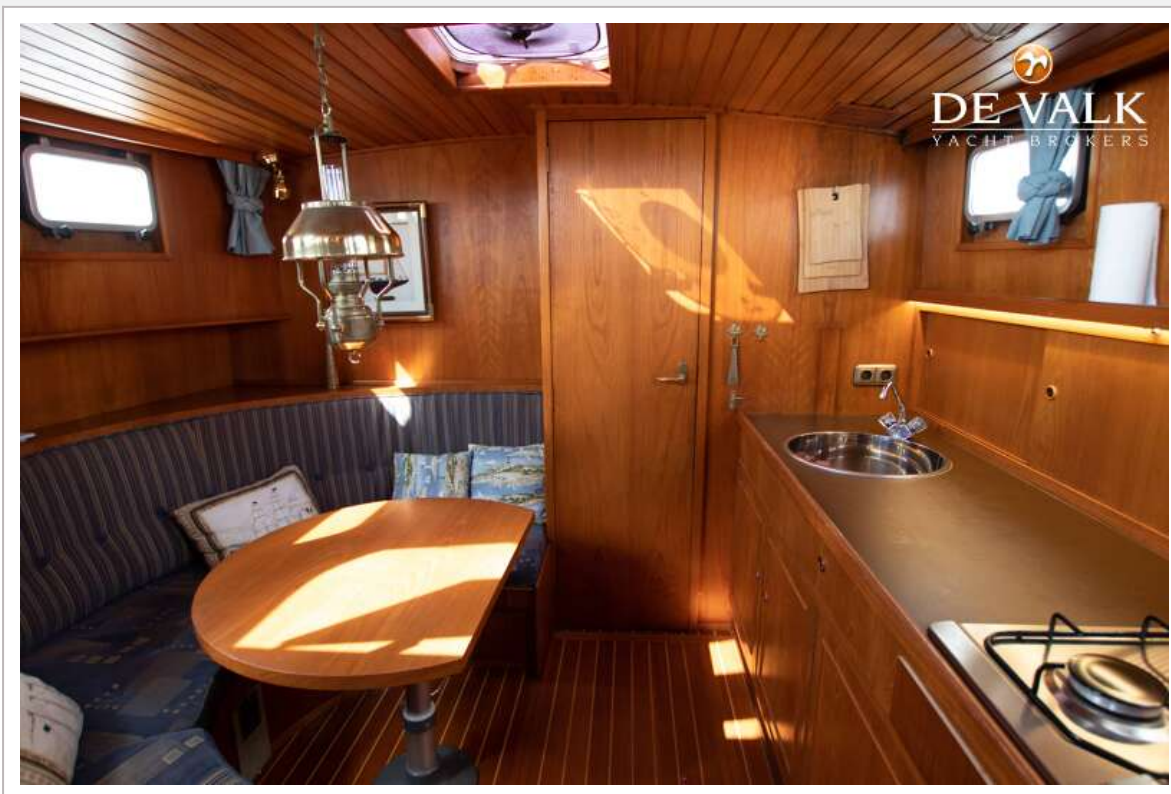


# DE RUITER KOTTER 1350 AK



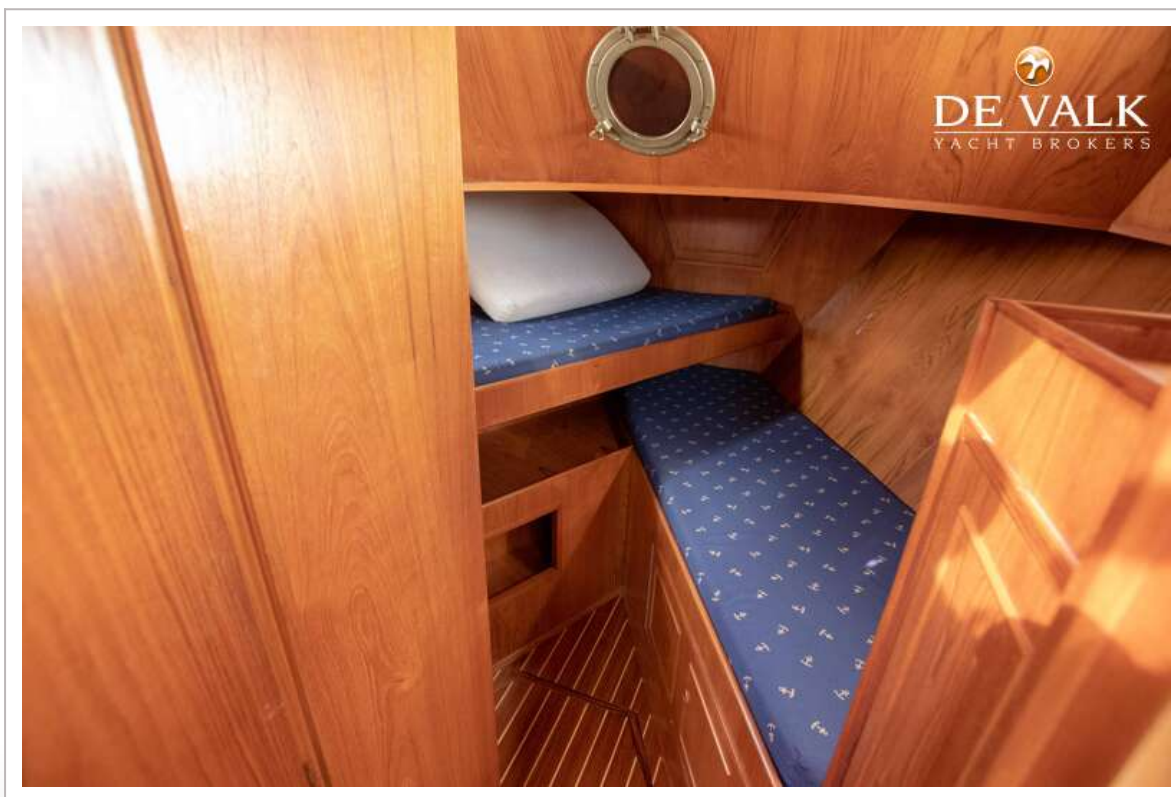
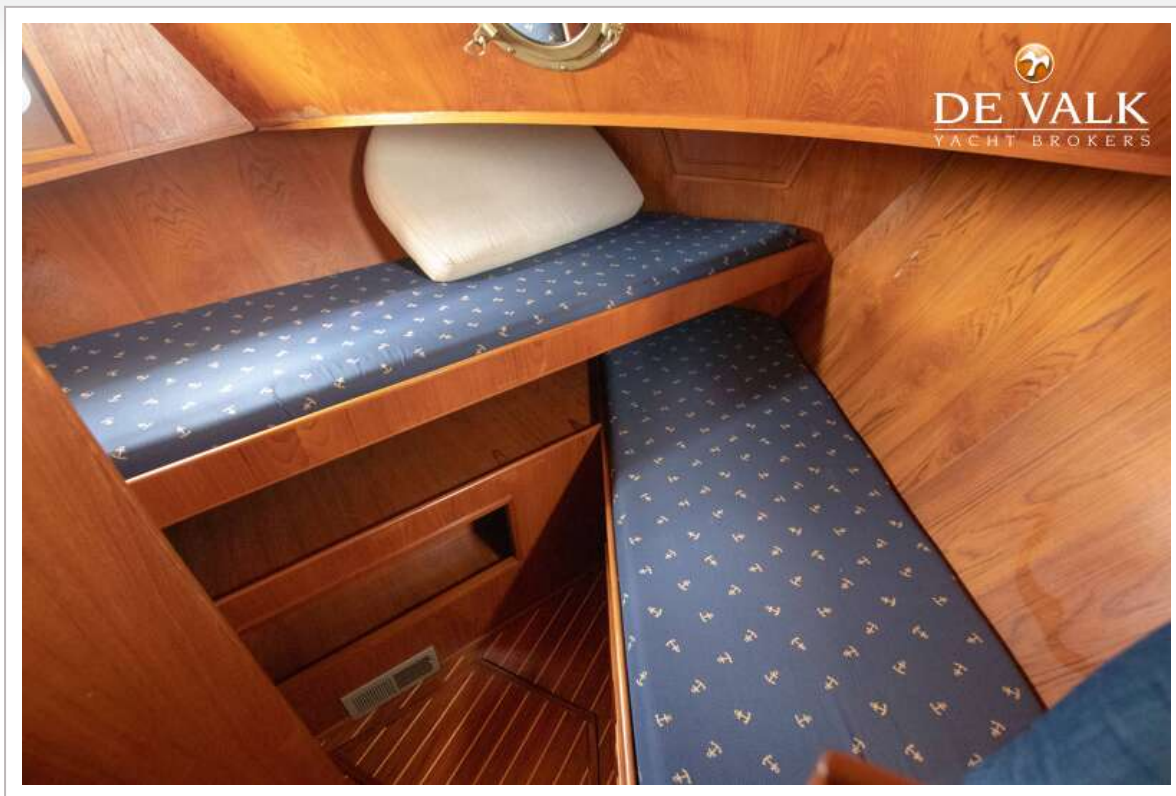


# DE RUITER KOTTER 1350 AK

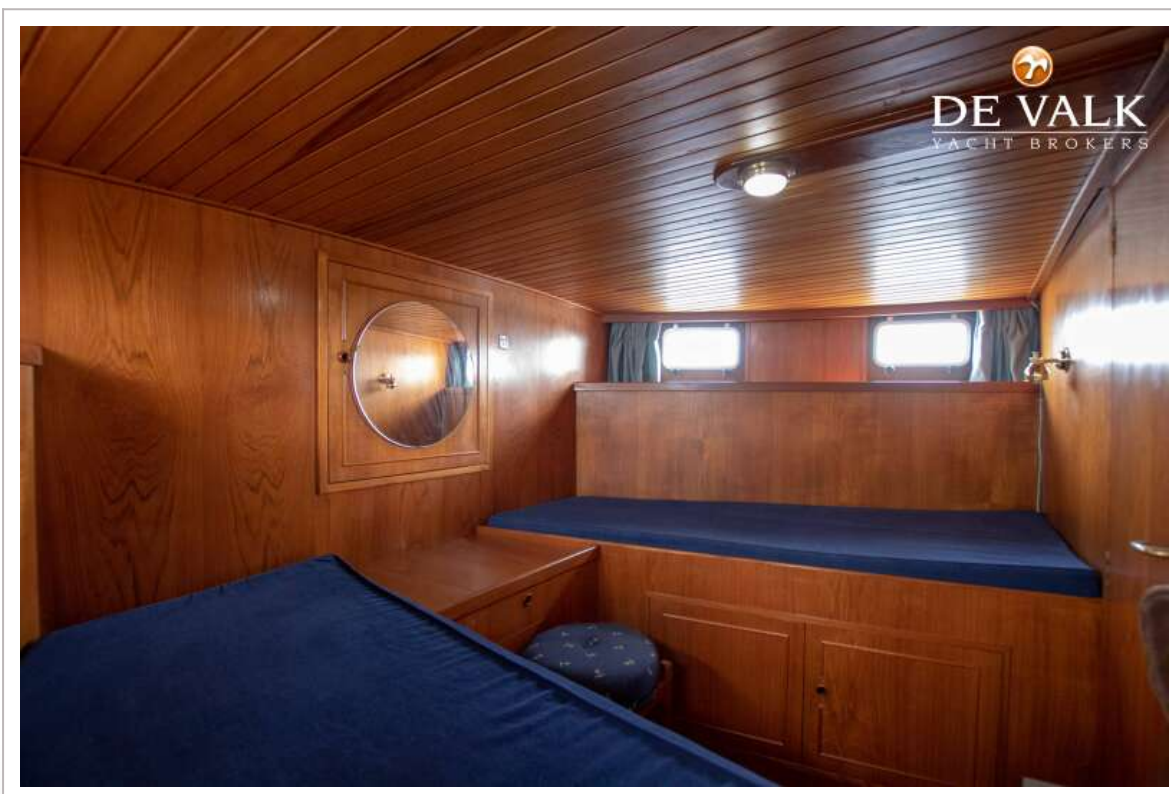
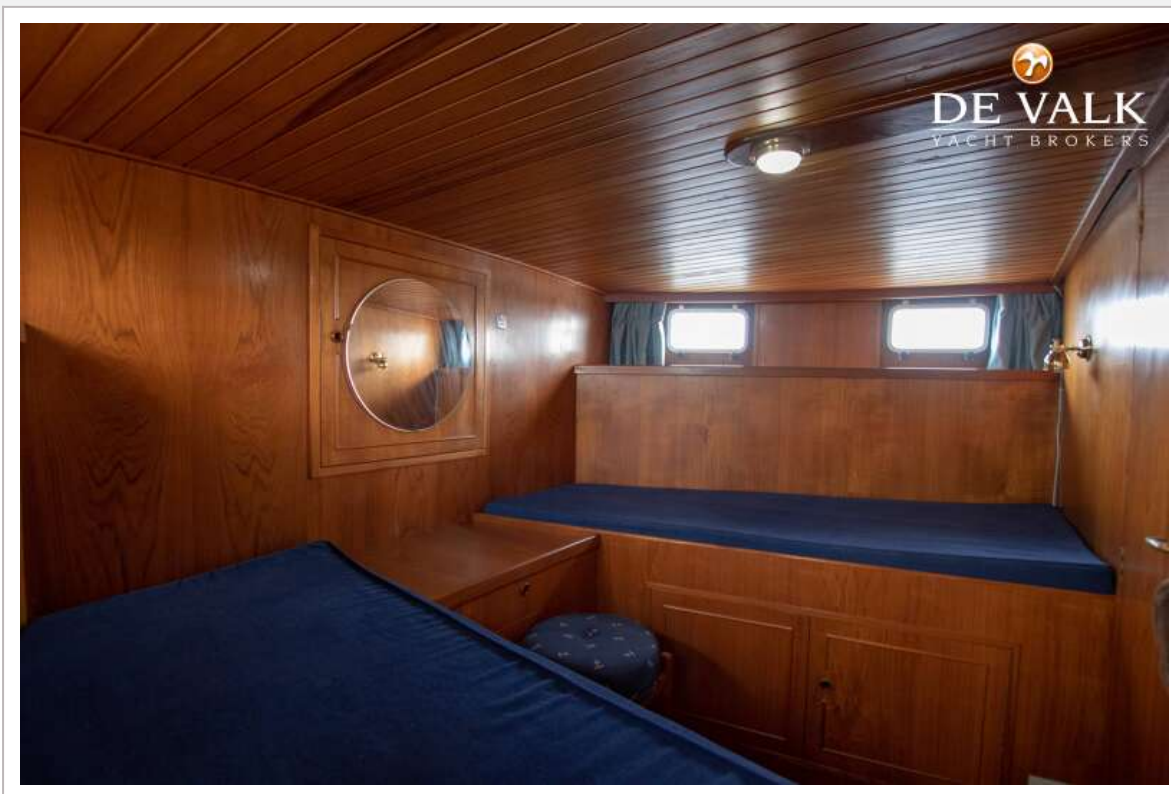




## DE RUITER KOTTER 1350 AK



# DE RUITER KOTTER 1350 AK



## DE RUITER KOTTER 1350 AK

