



## SUPER VAN CRAFT 1550

# SUPER VAN CRAFT 1550

## BROKER'S COMMENTS

Super van Craft 15.50 "Elisabeth B" built at Klaassen Shipyards Voorschoten, the Netherlands. She is equipped with two DAF diesel engines and a electric bow and sternthruster, generator and basically everything you expect on a yacht of this size. The SVC is painted in 2019. The Super van Craft 15.50 will be auctioned on 20 October in cooperation with Schipveiling-BVA Auctions. For further details and viewing days go to:

<http://bit.ly/SVC1550auction>. Opening price of the auction EUR. 25.000,- and offers can be made from 13 October on the website of BVA Auctions.

*Mark Hesselmans*

## SPECIFICATIONS

<b>Dimensions</b>	15.30 x 4.30 x 1.25 (m)	<b>Builder</b>	Klaassen
<b>Built</b>	1972	<b>Cabins</b>	3
<b>Material</b>	Steel	<b>Berths</b>	10
<b>Engine(s)</b>	2 x Daf 615 (turbo) diesel	<b>Hp/Kw</b>	2 x 157.00 (hp), 115.00 (kw)
<b>Asking price</b>	sold (VAT )	<b>Lying</b>	at sales office

## CONTACT

<b>Sales office</b>	De Valk Loosdrecht B.V.	<b>Telephone</b>	+31 (0)35 582 90 30
<b>Address</b>	't Breukeleveense Meentje 6 1231LM Loosdrecht / Wijdmeren NL	<b>E-mail</b>	loosdrecht@devalk.nl

## DISCLAIMER

These particulars are given in good faith as supplied but cannot be guaranteed.



# SUPER VAN CRAFT 1550

## GENERAL

Model	SUPER VAN CRAFT 1550
Type	motor yacht
LOA (m)	15,30
Beam (m)	4,30
Draft (m)	1,25
Air draft (m)	5,20
Headroom (m)	2,00
Year built	1972
Builder	Klaassen
Country	The Netherlands
CE norm	NA
Hull material	steel
Hull colour	white
Hull shape	S-bilged
Superstructure material	Steel and teak
Rubbing strake	stainless steel
Deck material	steel
Deck finish	teak
Superstructure deck finish	paint 2 componenten
Cockpit deck finish	teak
Window frame	aluminium
Window material	Normal glas except the steering house has double glas
Deckhatch	2 sliding hatches, 1 folding hatch and 2 emergency escapes.
Portholes	steel
Mast can be lowered	manual 2x
Fuel tank (litre)	steel 3x
Level indicator (fuel tank)	Vetus
Freshwater tank (litre)	steel 1200 +/-
Wheel steering	chain steering 2x
Extra info	Stork Hydrofore



# SUPER VAN CRAFT 1550

## ACCOMMODATION

Cabins	3
Berths	10
Interior	teak
Floor	carpet Vochtbestendig
Pilot house	Teak
Saloon	Original Super van Craft table with two chairs and three stools
Headroom saloon (m)	2.00
Heating	diesel ducted hot air Eberspacher D8L-C overhauled 2020
Aft Cabin	yes
Dinette to convert into berth	yes
Opening door to aft deck	yes
Galley	yes
Countertop	Duropol
Sink	stainless steel
Cooker	ceramic
Extractor	yes
Microwave/oven combi	Siemens
Fridge	2x Bosch
Freezer	2x in fridge
Hot water system	220V + engine 2x 75L boiler
Water pressure system	electrical
Owners cabin	twin single Auping mattress
Bed length (m)	2.00 x 1.00 m (2x)
Wardrobe	hanging/drawers/shelves
Bathroom	en suite
Toilet	en suite
Toilet system	electric
Wash basin	in the bathroom
Shower	en suite
Bath tub	en suite



# SUPER VAN CRAFT 1550

Guest cabin 1	bunk bed
Wardrobe	drawers
Bathroom	shared
Toilet	shared
Toilet system	electric
Wash basin	in the bathroom
Shower	shared
Guest cabin 2	bunk bed
Wardrobe	drawers
Bathroom	shared
Toilet	shared
Toilet system	electric
Wash basin	in the bathroom
Shower	shared
Extra info	Keylocker at the steering house door
Extra info	Safe for the valuables

## MACHINERY

No of engines	2
Make	Daf
Type	615 (turbo)
HP	157
kW	115,00
Fuel	diesel
Maximum speed (kn)	9,00
Engine hours	4020
Engine cooling system	Closed cooling with 4 compartments
Drive	shaft
Engine controls	bowden cable
Gearbox	mechanical
Engine controls	bowden cable



# SUPER VAN CRAFT 1550

Bowthruster	electric
Sternthruster	electric
Exhaust	watercooled
Propeller type	fixed
Propeller blades	3
Propeller shaft material	steel
Shaft lubrication	grease
Electric bilge pump	Heavy duty
Generator	wet exhaust Westerbeke 8kwh with silence box
Running hours generator	815 +/-
Start battery	2x 225Ah Wilco Royal
Service battery	8x 105Ah Wilco Royal
Generator battery	1x 50Ah Optima rood
Bowthruster battery	2x Optima rood
Sternthruster battery	2x Optima rood 05-2020
Battery monitor	for the service accu's Victron monitor and battery alarm
Battery charger	Victron energie (2019)
Battery charger/inverter	Victron Multiplus Compact 24V-2000VA-50A (in 2020 overhauld)
Diode battery combiners	yes
Shorepower	with cable
Insulation transformer	yes
Extra info	XR3 water filtering with UV

## NAVIGATION

Compass	Original SVC
Depth sounder	Autohelm
Depth sounder/log	Autohelm
Autopilot	Neco (Pump works, Controlingsystem defect)
Navigation lights	yes
Searchlight	yes



# SUPER VAN CRAFT 1550

Loudhailer	yes
------------	-----

## EQUIPMENT

Winter cover	yes
Cockpit cushions	yes
Bathing platform	yes
Boarding ladder	steel
Transom door	yes
Deck shower	Hot and cold water
Anchor	Danforth
Anchor chain	yes
Windlass	electrical Overhaul 2020
Deck wash	Heavy duty
Davits	steel
Davits controls	manual
Sea railing	teak
Railing side opening gates	yes
Wiper	3x
Horn	air pressure
Radio-cd player	Philips DC 928
Speakers in salon	yes

## RIGGING

Material mast	wood
Extra info	Support sail



# SUPER VAN CRAFT 1550



  
**DE VALK**  
YACHT BROKERS



BROKERAGE | CHARTER | BERTHS | FINANCE | INSURANCE | YACHT MANAGEMENT

  
**DE VALK**  
YACHT BROKERS



**This yacht will be auctioned,  
for further details please visit [www.devalk.nl](http://www.devalk.nl)**

**Dit schip zal worden geveild,  
voor meer informatie gaat u naar [www.devalk.nl](http://www.devalk.nl)**

**Dieses Schiff wird versteigert,  
für weitere informationen besuchen Sie [www.devalk.nl](http://www.devalk.nl)**

[WWW.DEVALK.NL](http://WWW.DEVALK.NL)

  
**DE VALK**  
YACHT BROKERS





# SUPER VAN CRAFT 1550



# SUPER VAN CRAFT 1550

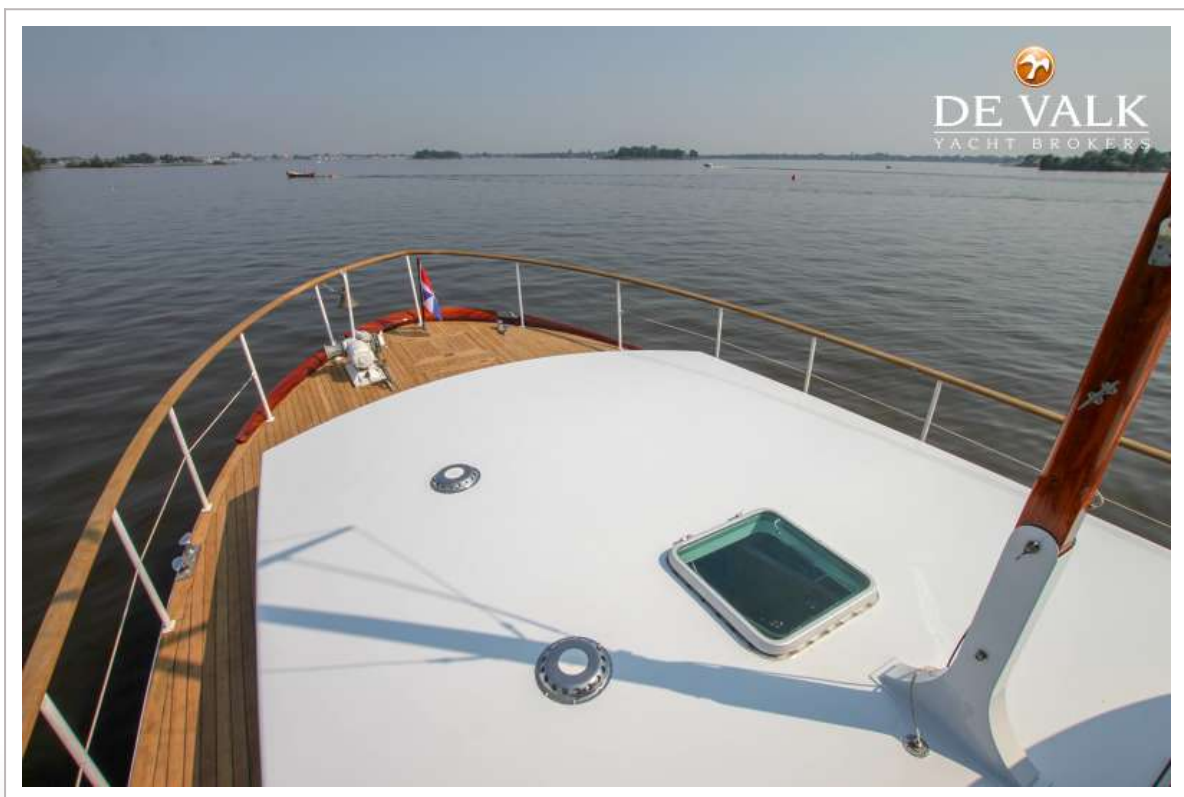


# SUPER VAN CRAFT 1550





# SUPER VAN CRAFT 1550

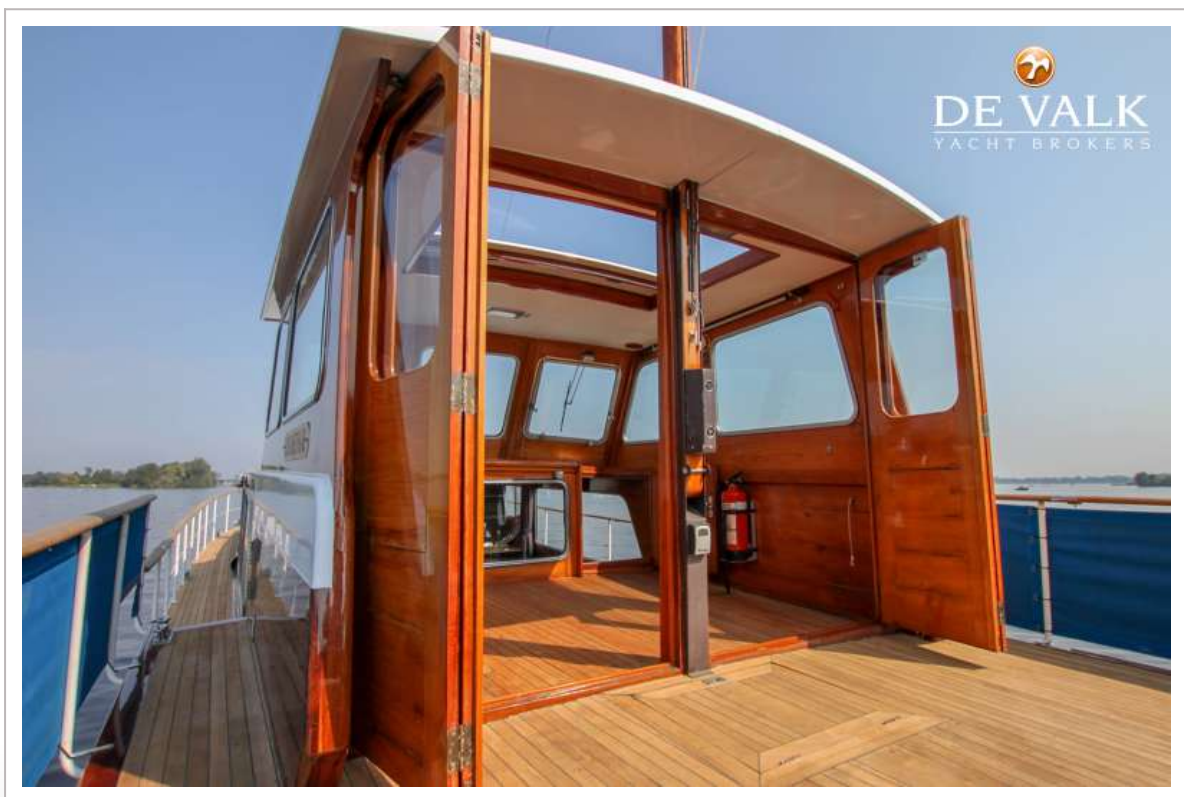
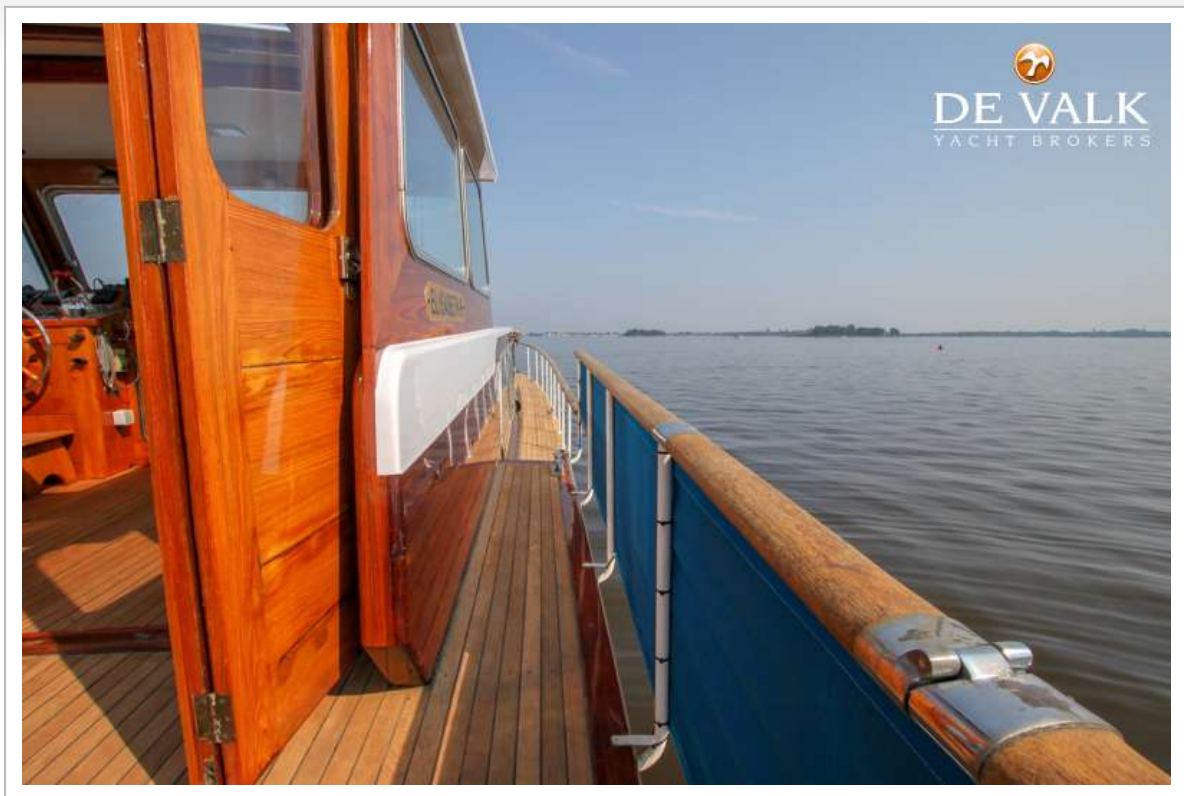


# SUPER VAN CRAFT 1550

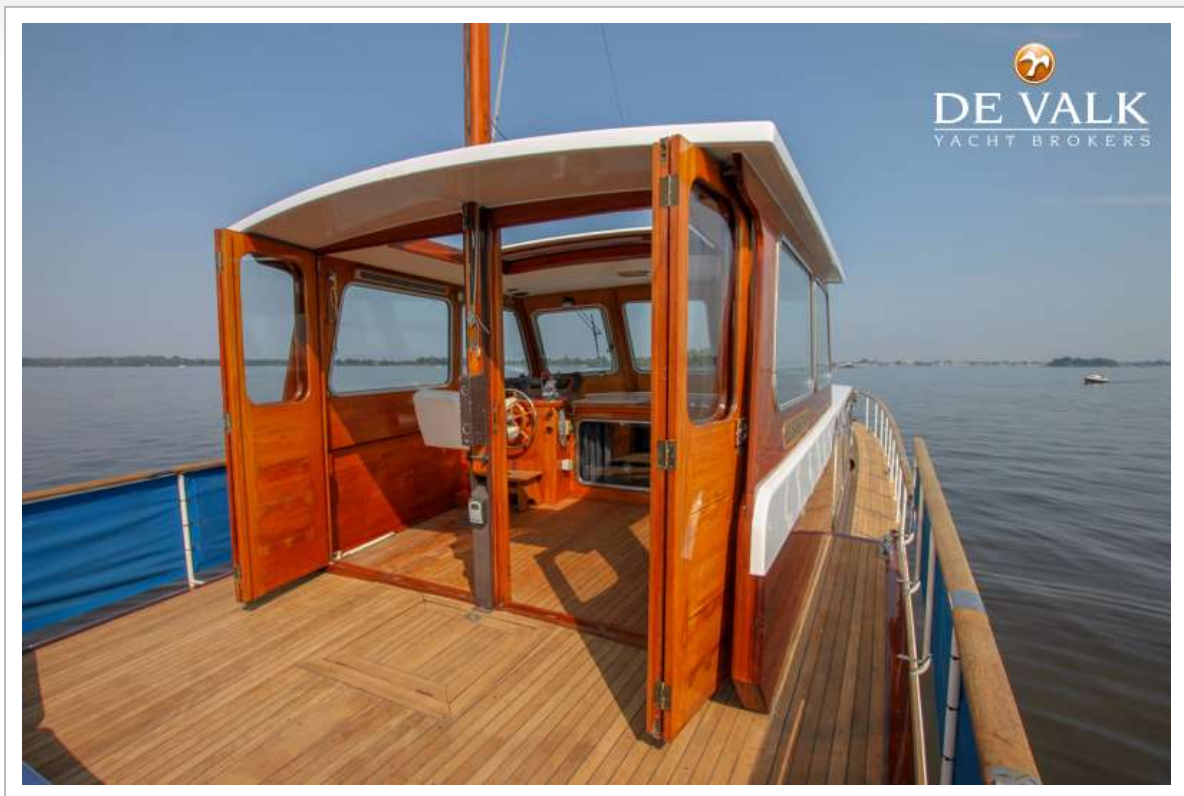




# SUPER VAN CRAFT 1550



# SUPER VAN CRAFT 1550





# SUPER VAN CRAFT 1550





# SUPER VAN CRAFT 1550

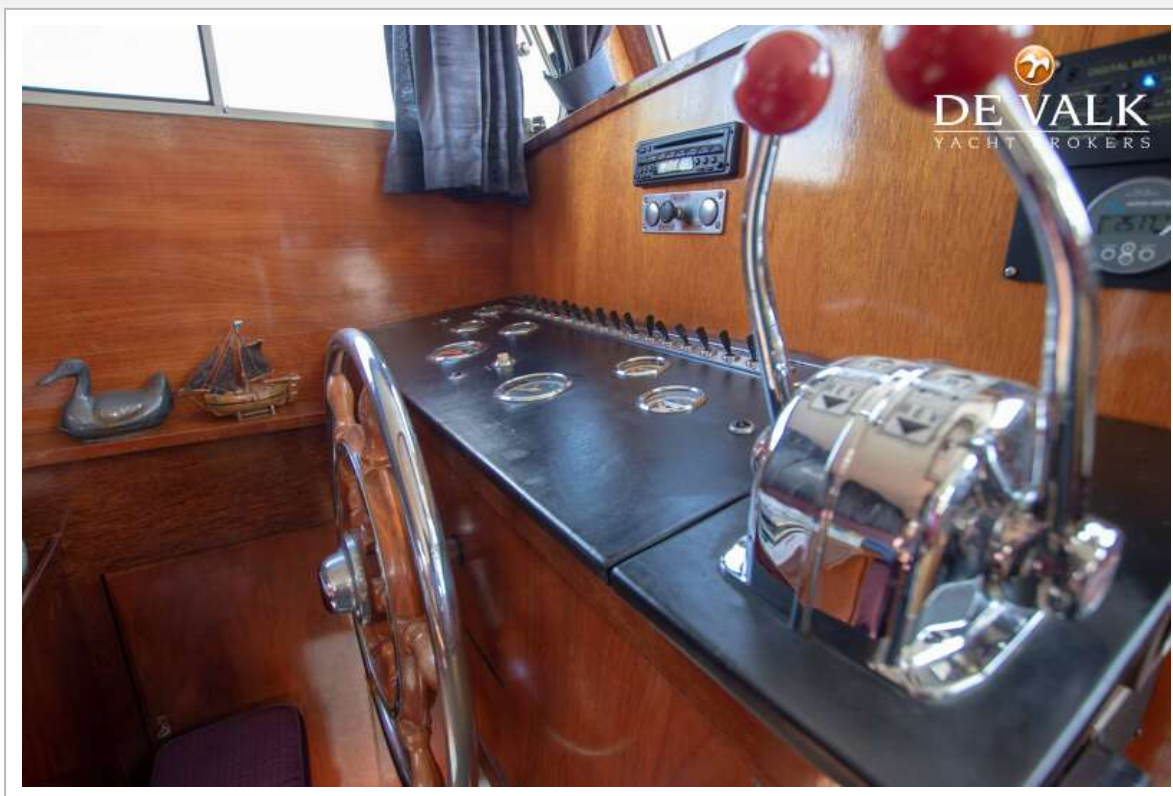


# SUPER VAN CRAFT 1550





# SUPER VAN CRAFT 1550



## SUPER VAN CRAFT 1550





# SUPER VAN CRAFT 1550

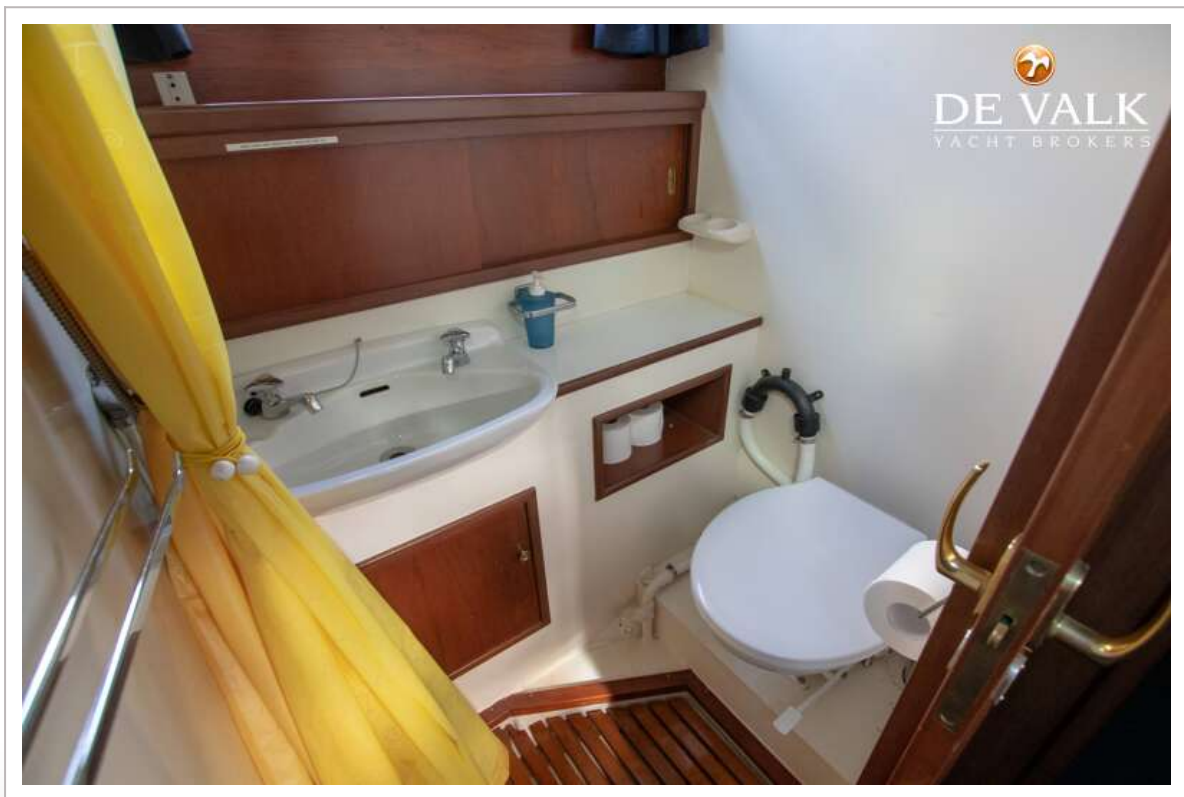
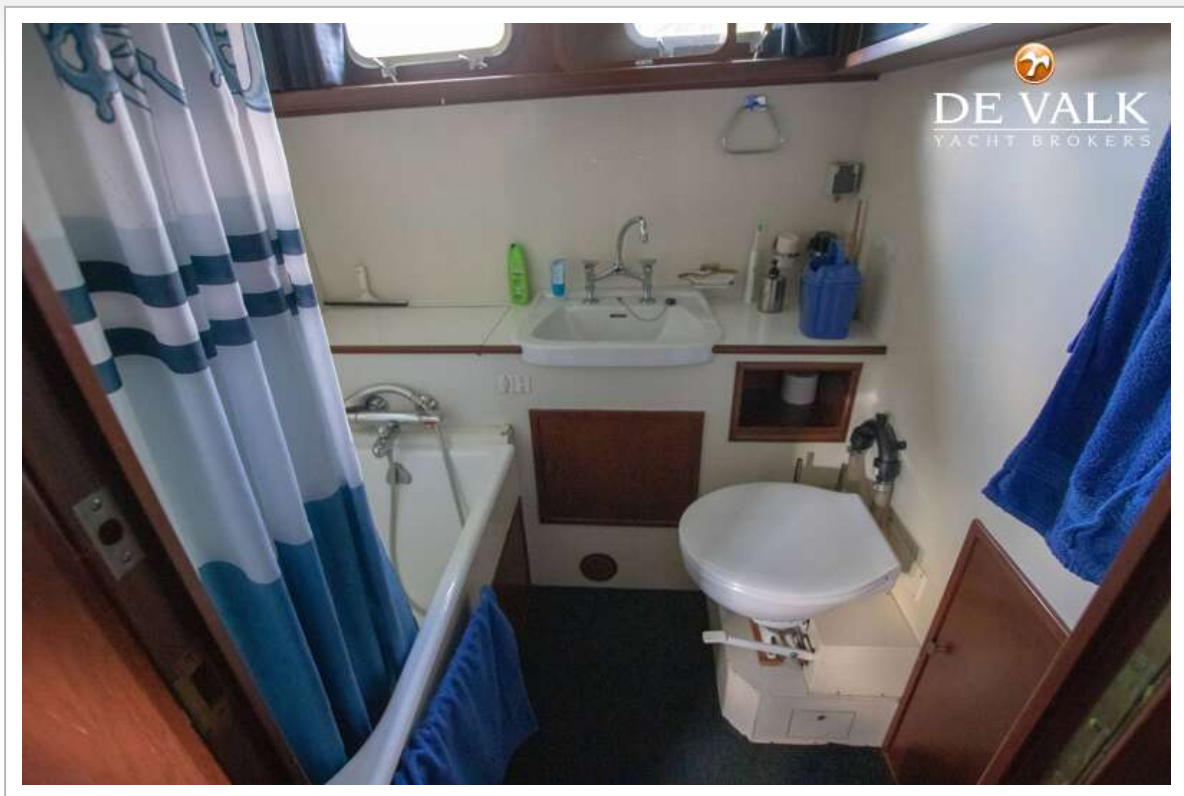


# SUPER VAN CRAFT 1550





# SUPER VAN CRAFT 1550



# SUPER VAN CRAFT 1550





# SUPER VAN CRAFT 1550



## SUPER VAN CRAFT 1550

