



DEHLER 41 CRUISING



DEHLER 41 CRUISING

BROKER'S COMMENTS

Dehler is not only renowned for its well performing yachts but also for its unflawed quality. This particular yacht is especially interesting because of good specification, carefully and little used mostly as a daysailor. The Dehler 41 cruising is the result of over 30 years experience in yacht building, featuring details that make this yacht as fast as she is also safe and easy to handle.

Marc Weijenberg

SPECIFICATIONS

Dimensions	12.45 x 3.90 x 1.95 (m)	Builder	Dehler yachtbau GmbH
Built	1997	Cabins	2
Material	GRP	Berths	6
Engine(s)	1 x Yanmar 3JH2-TE diesel	Hp/Kw	48.00 (hp), 35.28 (kw)
Asking price	sold (VAT)	Lying	at sales office

CONTACT

Sales office	De Valk Sint Annaland B.V.	Telephone	+31 (0)166 601 000
Address	Koelhuisweg 4 4697 RM Sint Annaland NL	E-mail	sintannaland@devalk.nl

DISCLAIMER

These particulars are given in good faith as supplied but cannot be guaranteed.



GENERAL

Model	DEHLER 41 CRUISING
Type	sailing yacht
LOA (m)	12,45
Beam (m)	3,90
Draft (m)	1,95
Air draft (m)	19,50
Headroom (m)	1,98
Year built	1997
Builder	Dehler yachtbau GmbH
Country	Germany
Designer	Judel & Vrolijk
Displacement (t)	8,9
Ballast (tonnes)	3.3
Hull material	GRP
Hull colour	white
Hull shape	roundbilged
Keel type	fin keel
Superstructure material	GRP
Rubbing strake	rubber
Deck material	GRP
Deck finish	TBS
Cockpit deck finish	teak Needs some work
Antifouling (year)	2013
Window frame	aluminium
Window material	polycarbonate
Portholes	aluminium
Fuel tank (litre)	stainless steel
Level indicator (fuel tank)	yes
Freshwater tank (litre)	stainless steel
Level indicator (freshwater)	yes



Blackwater tank (litre)	stainless steel
Blackwater tank extraction	deck extraction
Wheel steering	rack & pinion Solimar
Emergency tiller	yes

ACCOMMODATION

Cabins	2
Berths	6
Interior	Gambaya
Floor	carpet
Saloon	yes
Headroom saloon (m)	1,98
Heating	diesel ducted hot air Eberspächer
Chart table	yes
Dinette	yes
Galley	yes
Countertop	plastic
Sink	stainless steel
Cooker	calor gas Triton
Oven	Trito
Fridge	12v Tec
Hot water system	220V + engine
Water pressure system	electrical
Owners cabin	double bed
Bed length (m)	2,04x1,98
Wardrobe	hanging and drawers
Bathroom	en suite
Toilet	en suite
Toilet system	electric
Wash basin	in the bathroom
Shower	en suite



Guest cabin 1	double bed
Bed length (m)	2,00x1,89
Wardrobe	hanging
Toilet	en suite
Toilet system	manual
Wash basin	in the bathroom
Shower	shared

MACHINERY

No of engines	1
Make	Yanmar
Type	3JH2-TE
HP	48,00
kW	35,28
Fuel	diesel
Year installed	1997
Maximum speed (kn)	8
Cruising speed (kn)	7
Engine hours	996
Engine cooling system	freshwater heat exchanger
Drive	shaft
Engine controls	bowden cable
Gearbox	mechanical Hurth
Engine controls	bowden cable
Gearbox	mechanical Hurth
Exhaust	watercooled
Propeller type	feathering
Propeller blades	3
Propeller shaft material	stainless steel
Shaft lubrication	water
Manual bilge pump	1x



Electric bilge pump	1x
Electrical installation	12V/220V
Start battery	1x
Service battery	3x - 2009
Battery monitor	yes
Battery charger	automatic
Inverter	Techtron ± 250 watt
Shorepower	with cable

NAVIGATION

Compass	Suunto
Depth sounder	Navico Corus
Log	Navico Corus
Windset	windspeed defect Navico Corus
VHF	Shipmate RS8300
Radar	Furuno 821
GPS	defect Philips
Plotter	Navman Navtracker 5505

EQUIPMENT

Fixed windscreen	yes
Sprayhood with grab rail	white 2010
Cockpit table	fixed
Bathing platform	yes
Boarding ladder	stainless steel
Transom door	yes
Deck shower	cold
Anchor	Delta
Anchor chain	yes
Windlass	electrical
Davits	stainless steel Removable



Davits controls	manual
Sea railing	stainless steel
Grab rail (superstructure)	teak
Railing side opening gates	yes
Pushpit	yes
Pulpit	yes
Fenders	yes
Mooring lines	yes
TV	Aristona
Radio-cd player	yes
Speakers in salon	yes
Clock - barometer	yes

RIGGING

Rigging	fractional
Standing rigging	wire
Brand mast	Dehler
Material mast	aluminium
Spreaders	2x
Mainsail cover	Dehler Main Drop Lazy jacks
Fully battened mainsail	in good condition Elvstrom 1997
Genoa II	Elvstrom 1997
Genoa furler	Furlex
Genoa cover	yes
Self tacking jib installation	yes
Reefing System	quick-one-line-reefing
Backstay adjuster	tackle
Boomvang	tackle
Genoa sheetwinches	electric 2x Harken 44 AST
Spi-pole	aluminium



DEHLER 41 CRUISING



DEHLER 41 CRUISING



DEHLER 41 CRUISING



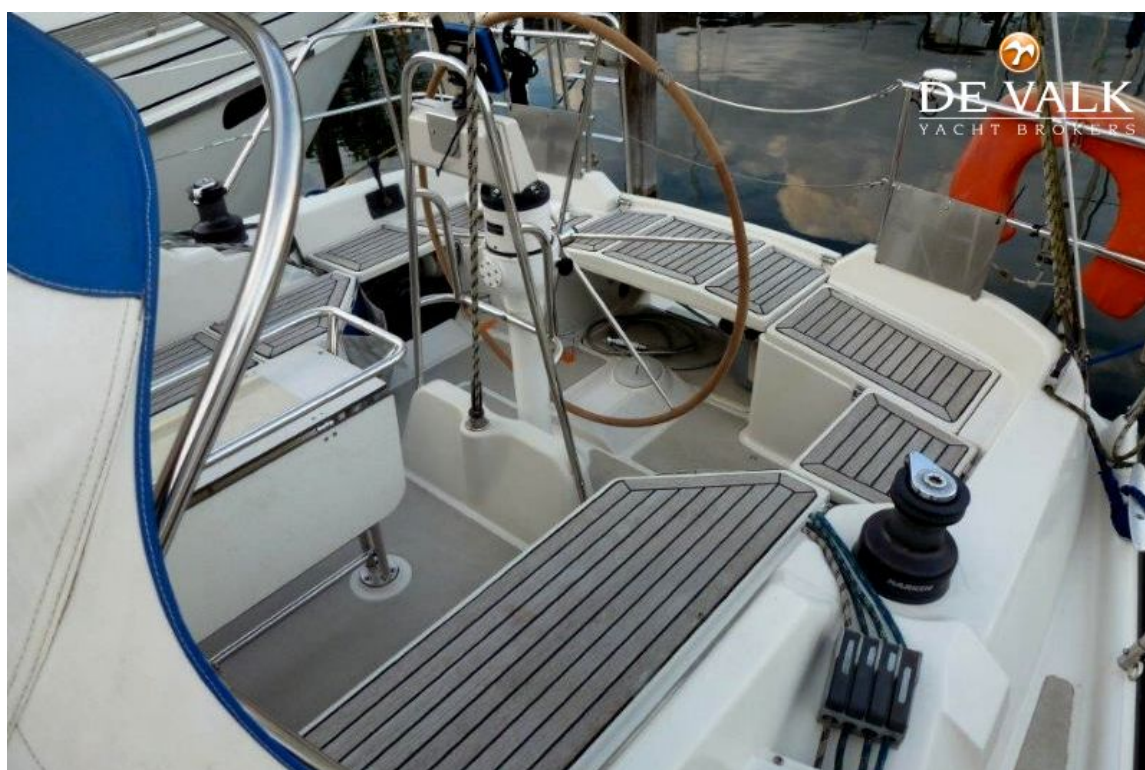
DEHLER 41 CRUISING



DEHLER 41 CRUISING



DEHLER 41 CRUISING



DEHLER 41 CRUISING

DEHLER 41 CRUISING



DEHLER 41 CRUISING



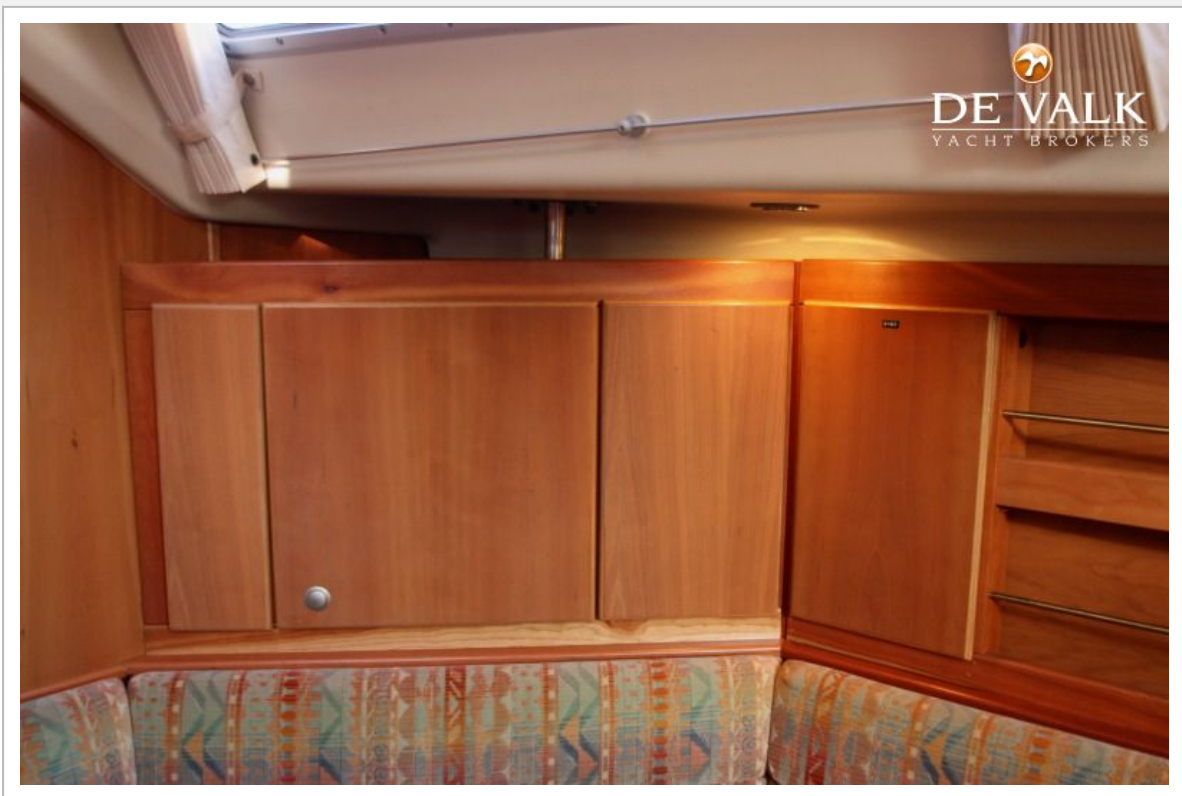
DEHLER 41 CRUISING



DEHLER 41 CRUISING



DEHLER 41 CRUISING



DEHLER 41 CRUISING



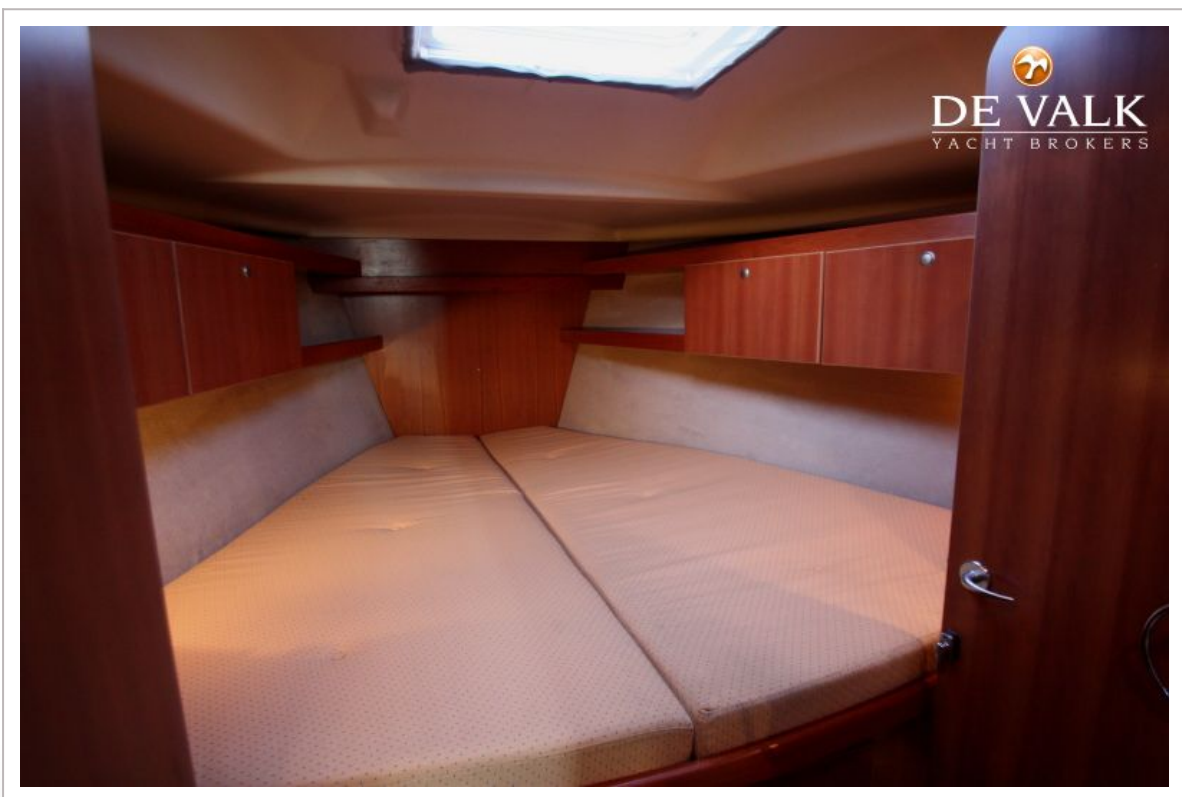
DEHLER 41 CRUISING



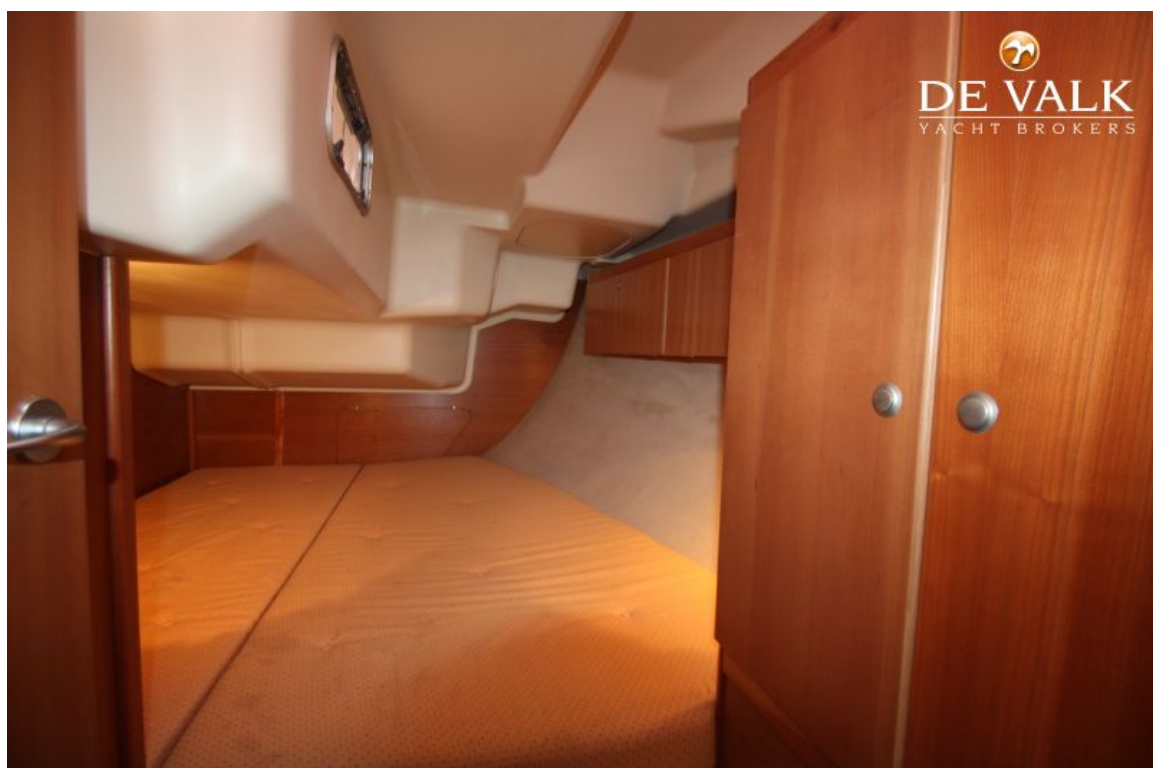
DEHLER 41 CRUISING



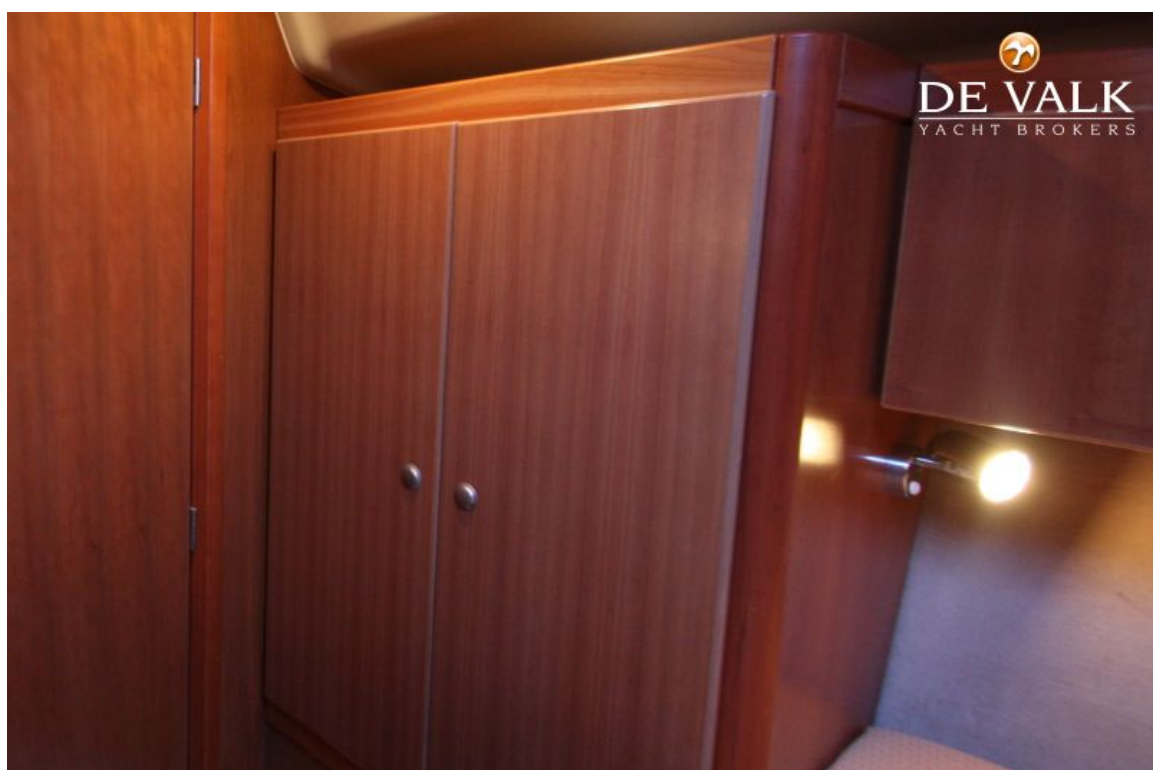
DEHLER 41 CRUISING



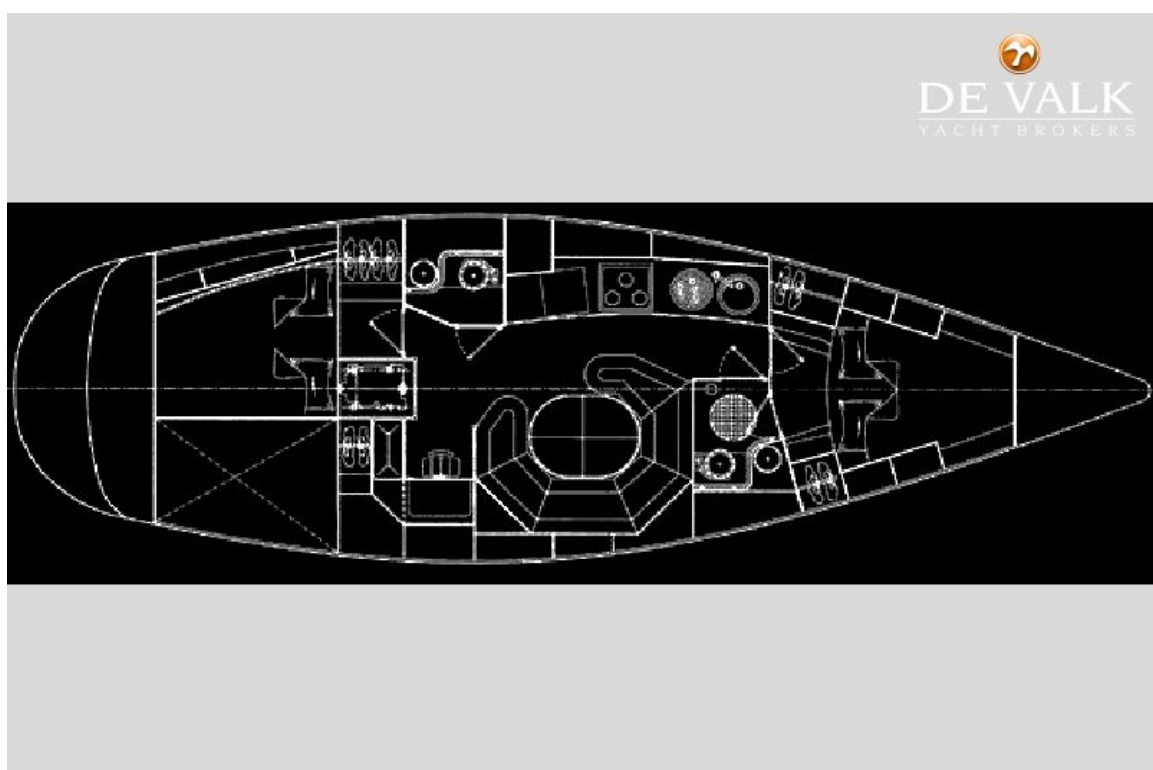
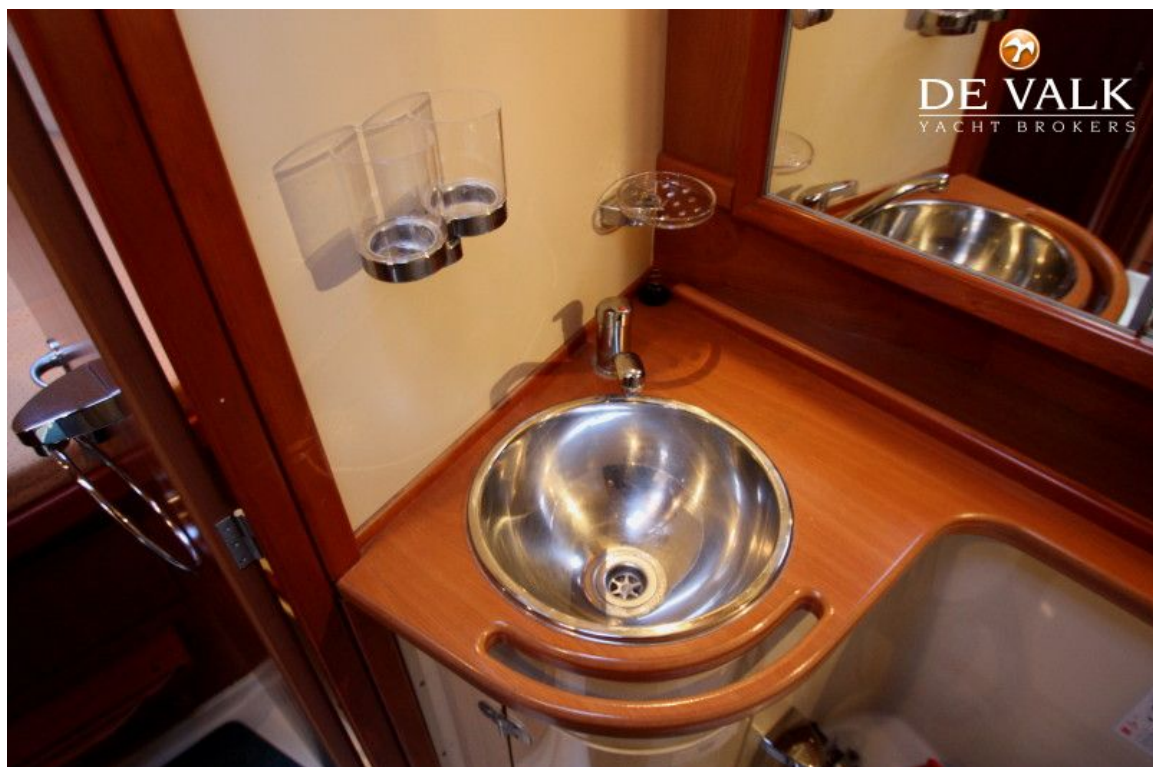
DEHLER 41 CRUISING

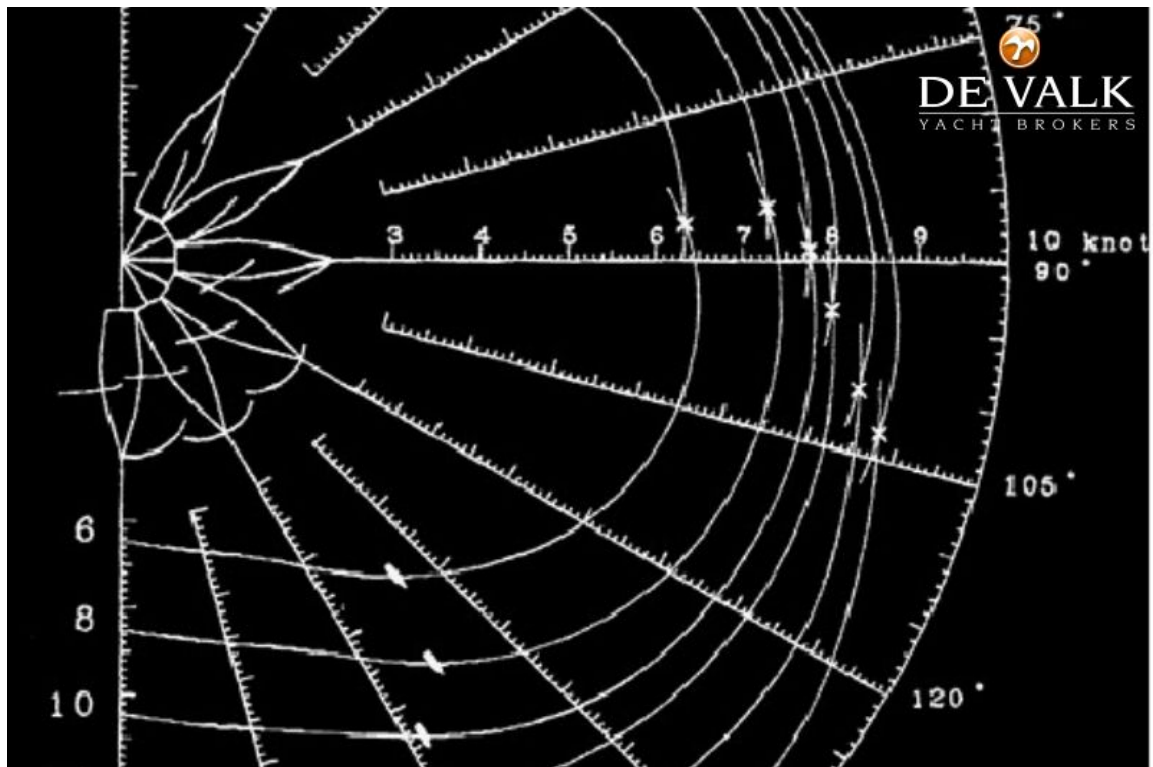


DEHLER 41 CRUISING



DEHLER 41 CRUISING





Dehler 



DEHLER 41 CRUISING



