



DE VALK  
YACHTBROKERS



## DOGGERSBANK 1900



DE VALK  
YACHTBROKERS

## BROKER'S COMMENTS

This Doggersbank 1900 "Martina" is a true hybrid, both in design and technology. Originally designed by Vripack's Dick Boon. Built in 1985 and completely rebuilt from bare steel by Zeelander Yachts in 2018, she combines timeless Dutch craftsmanship with modern innovation. Her diesel-electric propulsion system ensures quiet, efficient and environmentally friendly cruising. The yacht offers the comfort, quality and safety of a modern explorer while retaining the elegance and character of a classic design. Fully equipped and in a new condition.

*Hielke Peters*

## SPECIFICATIONS

<b>Dimensions</b>	19.00 x 5.20 x 1.75 (m)	<b>Builder</b>	Zeelander Yachts / Van der werf & Visser
<b>Built</b>	2018	<b>Cabins</b>	3
<b>Material</b>	Steel	<b>Berths</b>	6
<b>Engine(s)</b>	1 x Volvo D9-MH diesel	<b>Hp/Kw</b>	355.00 (hp), 260.00 (kw)
<b>Asking price</b>	€ 2.395.000 (VAT Paid)	<b>Lying</b>	contact Loosdrecht

## CONTACT

<b>Sales office</b>	De Valk Loosdrecht B.V.	<b>Telephone</b>	+31 (0)35 582 90 30
<b>Address</b>	't Breukeleveense Meentje 6 1231LM Loosdrecht / Wijdmeren NL	<b>E-mail</b>	loosdrecht@devalk.nl

## DISCLAIMER

These particulars are given in good faith as supplied but cannot be guaranteed.



## GENERAL

<b>Model</b>	DOGGERSBANK 1900
<b>Type</b>	motor yacht
<b>LOA (m)</b>	19,00
<b>LWL (m)</b>	16,47
<b>Beam (m)</b>	5,20
<b>Draft (m)</b>	1,75
<b>Air draft (m)</b>	8,79
<b>Air draft min (m)</b>	3,38
<b>Headroom (m)</b>	2,00
<b>Year built</b>	2018
<b>Launched</b>	2019
<b>Builder</b>	Zeelander Yachts / Van der werf & Visser
<b>Country</b>	The Netherlands
<b>Designer</b>	Vripack
<b>Displacement (t)</b>	45
<b>CE norm</b>	A
<b>Hull material</b>	steel
<b>Hull colour</b>	blue
<b>Hull shape</b>	round-bilged
<b>Keel type</b>	box keel
<b>Superstructure material</b>	steel
<b>Rubbing strake</b>	stainless steel
<b>Deck material</b>	steel
<b>Deck finish</b>	synthetic teak
<b>Superstructure deck finish</b>	paint
<b>Cockpit deck finish</b>	synthetic teak
<b>Antifouling (year)</b>	2025
<b>Dorades</b>	stainless steel 8 x
<b>Window frame</b>	aluminium
<b>Window material</b>	double glazing



Deckhatch	yes
Portholes	stainless steel 8 x each side
Insulation	rockwool
Mast can be lowered	hydraulic
Steadying sail with mast	yes
Fuel tank (litre)	steel Total 7750 L. in 7 tanks
Level indicator (fuel tank)	yes
Fuel daytank (litre)	stainless steel 250 L.
Level indicator (daytank)	yes
Freshwater tank (litre)	stainless steel 2800 L + 2 fresh water filters
Level indicator (freshwater)	yes
Blackwater tank (litre)	steel 60 L
Level indicator (blackwater)	yes
Blackwater tank extraction	deck extraction + pump
Greywater tank (litre)	steel 225
Level indicator (greywater)	yes
Wheel steering	hydraulic
Inside helm position	yes
Outside helm position	hydraulic
Emergency tiller	yes
More info on paintwork	Repainted in 2025

## ACCOMMODATION

Cabins	3
Berths	6
Interior	teak Classic
Floor	Teak and Carpet
Aft deck	yes
Pilot house/deck saloon	yes
Saloon	yes
Headroom saloon (m)	2,10



Sliding roof	manual
Heating	floor heating
Heating 2	diesel ducted hot air Eberspacher
Air-conditioning	reverse cycle airco
Navigation center	yes
Dinette	yes
Opening door to cockpit	yes
Galley	U Shaped
Countertop	corian
Sink	stainless steel Double
Cooker	ceramic Miele 4 burner
Extractor	Miele
Microwave/oven combi	Miele
Fridge	2 x Miele
Freezer	Miele
Hot water system	220V + engine 60 Liter
Water pressure system	electrical
Dishwasher	Miele
Hot water tap	Quooker
Ice maker	yes
Coffee maker	yes
Crockery	yes
Waste compactor	yes
Owners cabin	French bed
Bed length (m)	2,05 x 1,70
Wardrobe	hanging/drawers/shelves
Bathroom	en suite
Toilet	en suite
Toilet system	electric
Wash basin	in the bathroom
Shower	en suite
Guest cabin 1	double bed



<b>Bed length (m)</b>	2,00 x 1,50
<b>Wardrobe</b>	hanging and shelves
<b>Bathroom</b>	shared
<b>Toilet</b>	shared
<b>Toilet system</b>	electric
<b>Wash basin</b>	in the bathroom
<b>Shower</b>	shared
<b>Guest cabin 2</b>	bunk bed
<b>Bed length (m)</b>	2,00 x 0,70
<b>Wardrobe</b>	yes
<b>Bathroom</b>	shared
<b>Toilet</b>	shared
<b>Toilet system</b>	electric
<b>Wash basin</b>	in the bathroom
<b>Shower</b>	shared
<b>Extra info</b>	The guest bathroom is shared but is en suite to guest cabin 2
<b>Washing machine/dryer combi</b>	Miele WT2670

## MACHINERY

<b>No of engines</b>	1
<b>Make</b>	Volvo
<b>Type</b>	D9-MH
<b>HP</b>	355
<b>kW</b>	260
<b>Fuel</b>	diesel
<b>Year installed</b>	2019
<b>Maximum speed (kn)</b>	10,00
<b>Cruising speed (kn)</b>	8,00
<b>Engine hours</b>	300
<b>Engine cooling system</b>	freshwater heat exchanger
<b>Drive</b>	shaft



<b>Shaft seal</b>	yes
<b>Engine controls</b>	electrical
<b>Gearbox</b>	hydraulic MG5114sC/dc-E
<b>Electric engine</b>	Baumuhler
<b>kW</b>	15 / 400 V.
<b>Engine controls</b>	electrical
<b>Bowthruster</b>	electric 15 Kw
<b>Exhaust</b>	watercooled
<b>Thrust bearing</b>	Aqua drive
<b>Propeller type</b>	fixed
<b>Propeller blades</b>	5
<b>Propeller shaft material</b>	stainless steel
<b>Shaft lubrication</b>	oilbath
<b>Manual bilge pump</b>	yes
<b>Electric bilge pump</b>	3 x automatic
<b>Bilge alarm</b>	yes
<b>Electrical installation</b>	12 & 24 V DC and 230 & 400 V AC
<b>Generator</b>	silent separator Kohler 17,5 kW 3 phase 50 Hz @ 1500 rpm
<b>Generator 2</b>	silent separator Kohler 6,5 kW 1 Phase 230 V 50 Hz @ 1500 rpm
<b>Batteries</b>	yes
<b>Start battery</b>	2 x VMF 100 AH 12V
<b>Service battery</b>	6 x Mastervolt MLi Ultraa 5000 180 aH each 540 Ah 12 V
<b>Generator battery</b>	3 x optima 44Ah 12 Volt
<b>Battery monitor</b>	Mastervolt
<b>Battery charger</b>	1x Mastervolt 24/12-3 1x Mastervolt 24/6 1x Mastervolt 12/10
<b>Battery charger/inverter</b>	5 x Mastervolt Mass combi pro 24/3500-100
<b>Diode battery combiners</b>	yes
<b>Shorepower</b>	with cable
<b>Stabilizers</b>	fin Zero speed Fin electric

## NAVIGATION



Compass	Lowrance Precision 9
Electric compass	Simrad
Multi control display	Under dashboard
Depth sounder	Simrad Xsonic P319 Simrad Smart Tri Multisensor
Log	Simrad
Repeater	Simrad
VHF	Simrad RS90
Autopilot	Simrad reversible pump 24V
Rudder angle indicator	Simrad
Radar	Simrad 4G Radar
GPS	Simrad GS25
Plotter	Simrad
Radar/GPS/plotter	3 x Simrad NSO touch wheelhouse & 1 x Flybridge
Navtex	yes
Personal computer	yes
PC connection	yes
Wifi antenna	Glomex Wbboat 4G Plus
Electronic chart(s)	yes
AIS transceiver	yes
Camera	1x Front-View 1x Stern-View
Navigation lights	yes
Searchlight	yes
Loudhailer	yes

## EQUIPMENT

Fixed windscreen	yes
Sun awning	yes
Cockpit cushions	yes
Cockpit table	yes
Cockpit chairs	3 x Inside 2 x Outside
Bathing platform	yes



Boarding ladder	stainless steel
Transom door	yes
Gangway	Hydraulic
Deck shower	yes
Anchor	CQR Plough
Anchor chain	yes
Windlass	electrical Horizontal Sanguineti Chiavari
Deck wash	yes
Dinghy	rigid inflatable
Outboard	Honda 40 Hp fourstroke
Davits	Hydraulic Gangway is used to hoist Dinghy on the platform
Sea railing	yes
Grab rail (superstructure)	stainless steel
Railing side opening gates	yes
Pushpit	yes
Pulpit	yes
Life raft	container
Life raft (pers)	8
Lifejackets	yes
Lifebuoy	yes
Danbuoy	yes
Wiper	yes
Horn	yes
Fenders	yes
Mooring lines	yes
Spare parts	yes
Tools	yes
Alarm system	yes
TV	Samsung
TV receiver	Glomex Avior VT300 (DVB-T)
iPod connection	Sonos
Surround Sound System	Sonos



Cockpit speakers	yes
Speakers in salon	yes
Speakers in cabin	yes
Clock - barometer	yes
Latest extinguisher survey	yes
Extinguisher in engine room	yes
Auto extinguisher system	Fire pro FP2000 aerosol



# DOGGERSBANK 1900



# DOGGERSBANK 1900



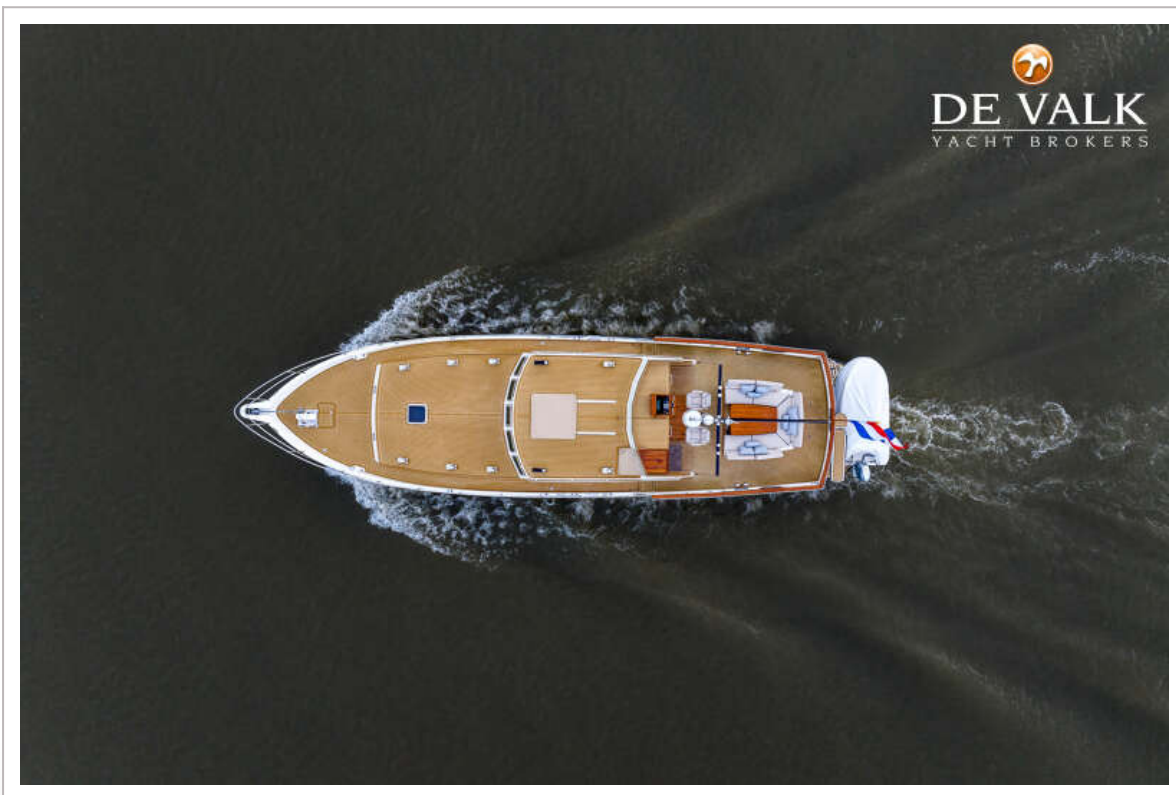
# DOGGERSBANK 1900



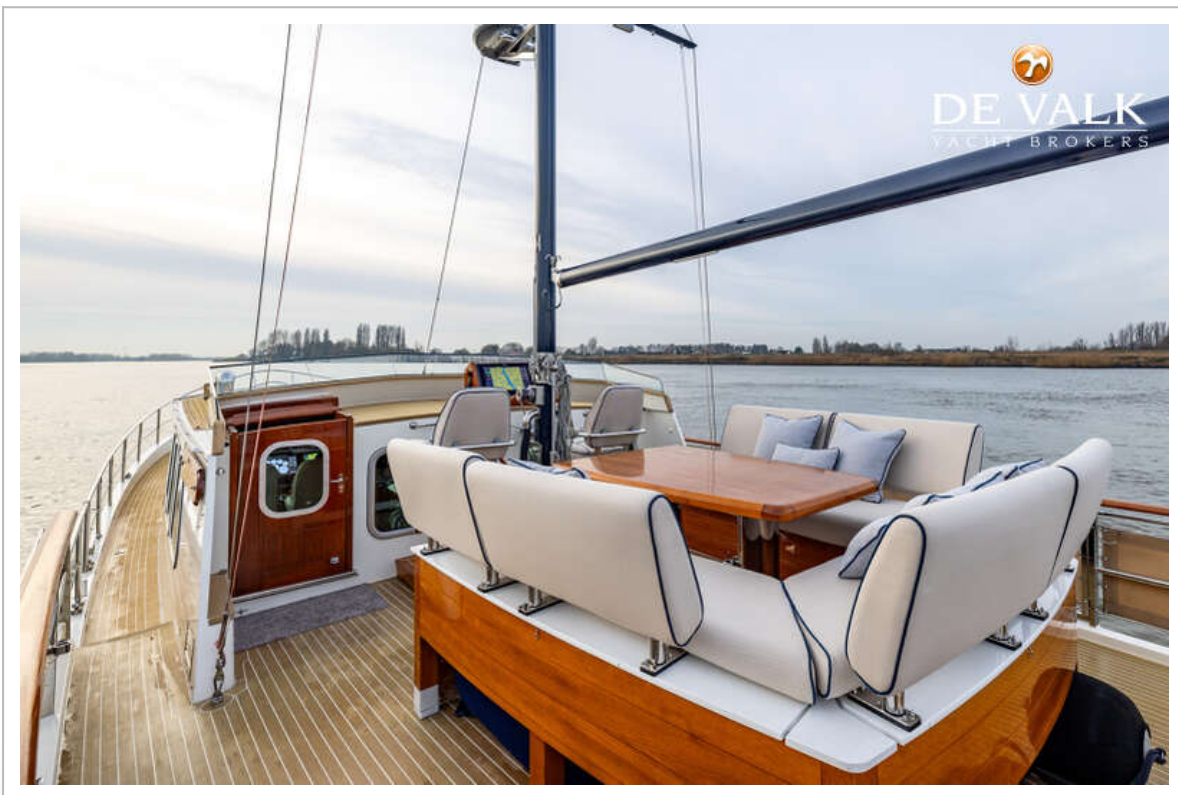
# DOGGERSBANK 1900



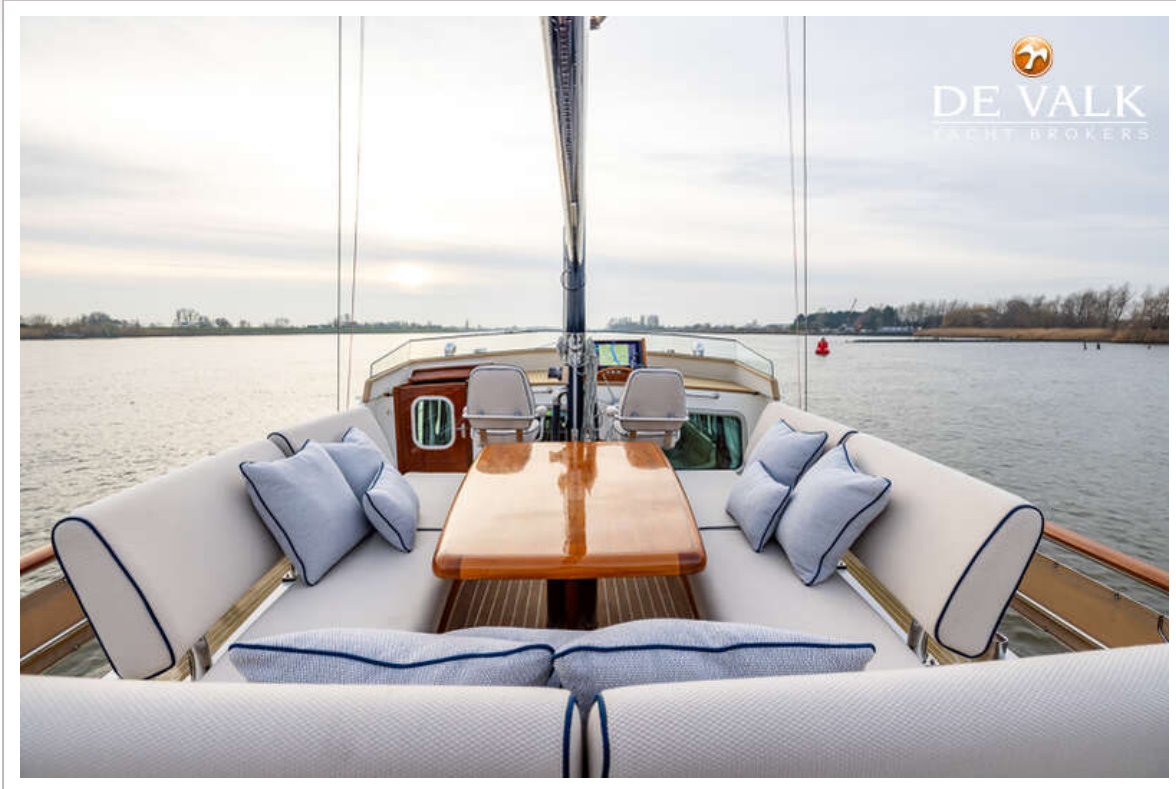
# DOGGERSBANK 1900



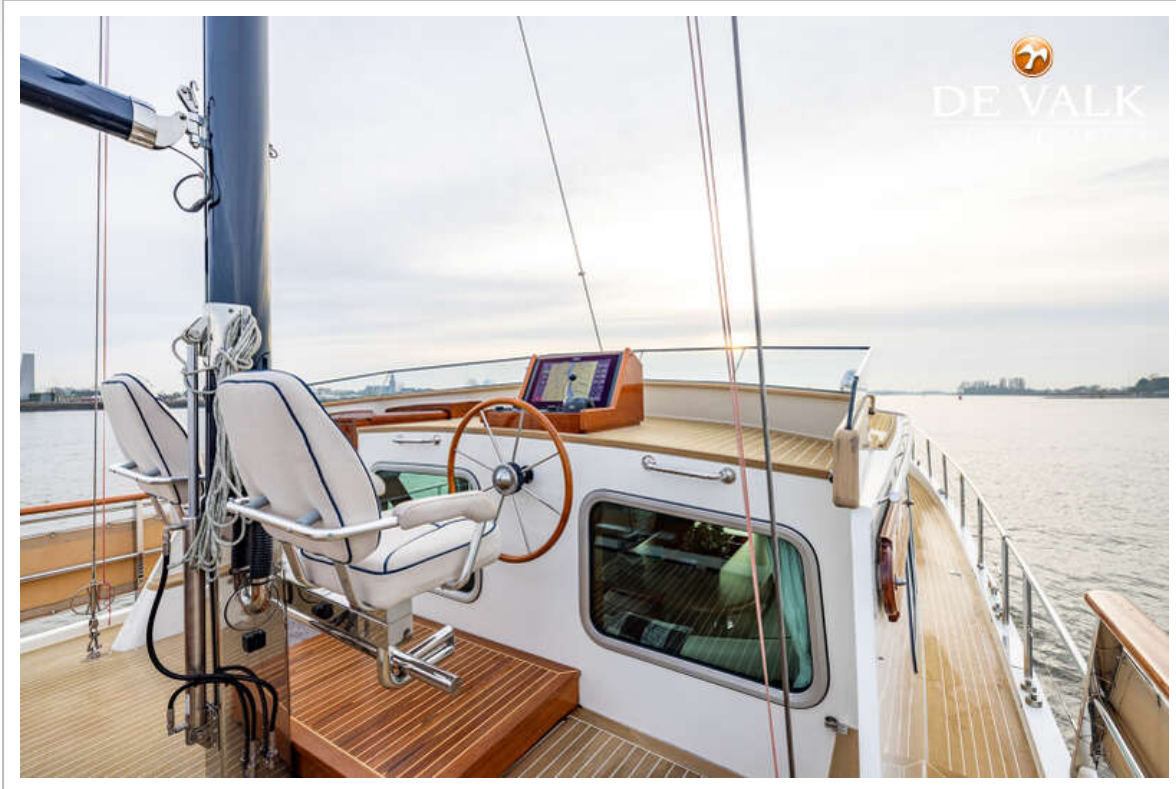
# DOGGERSBANK 1900



# DOGGERSBANK 1900



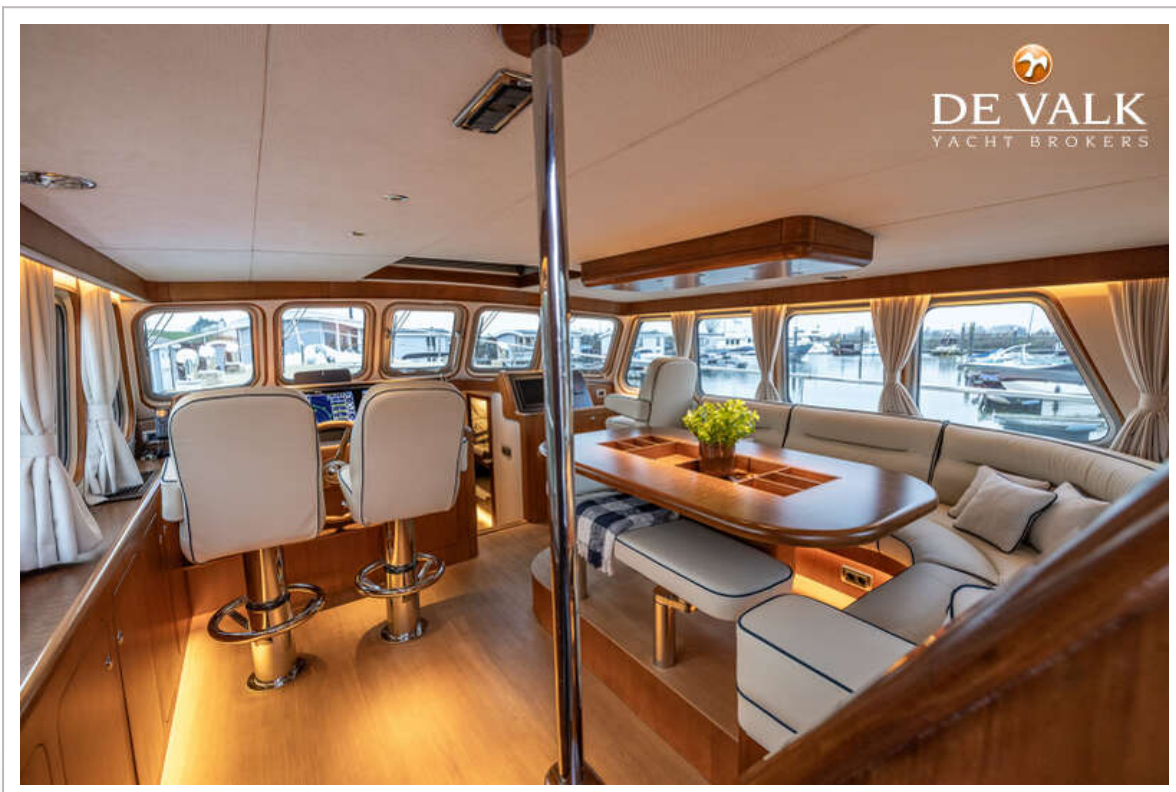
# DOGGERSBANK 1900



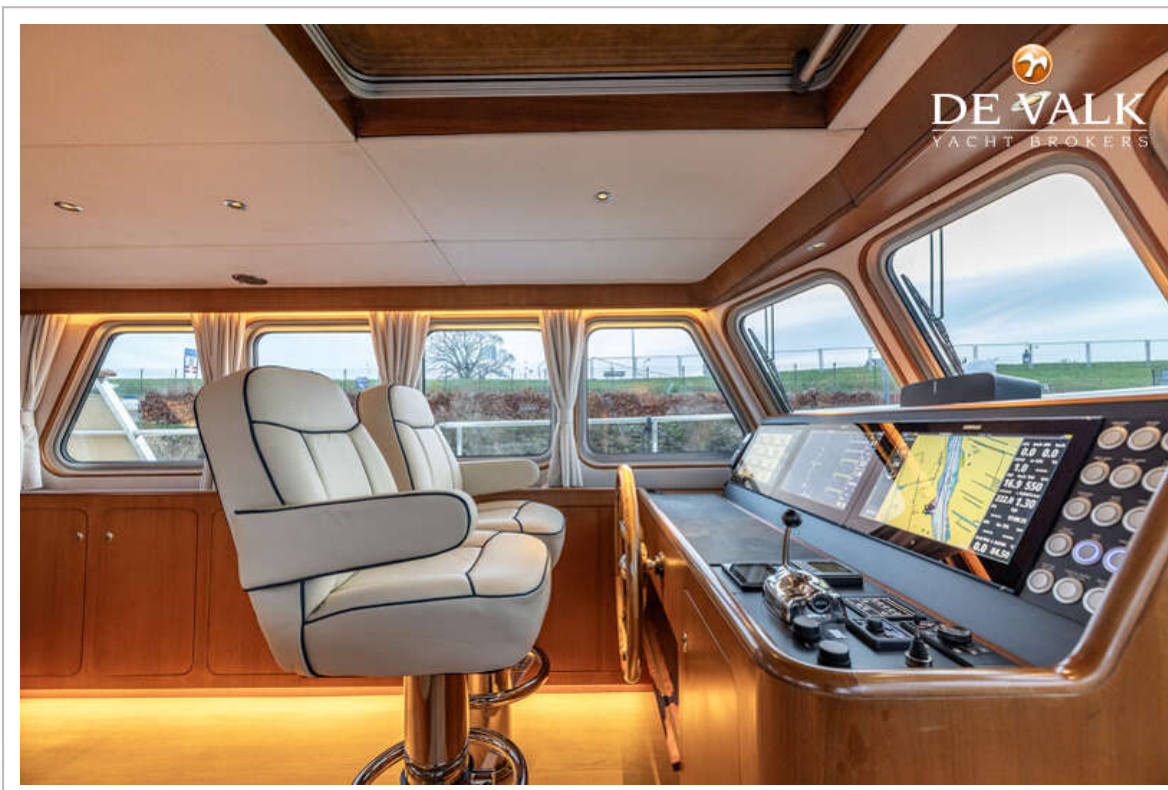
# DOGGERSBANK 1900



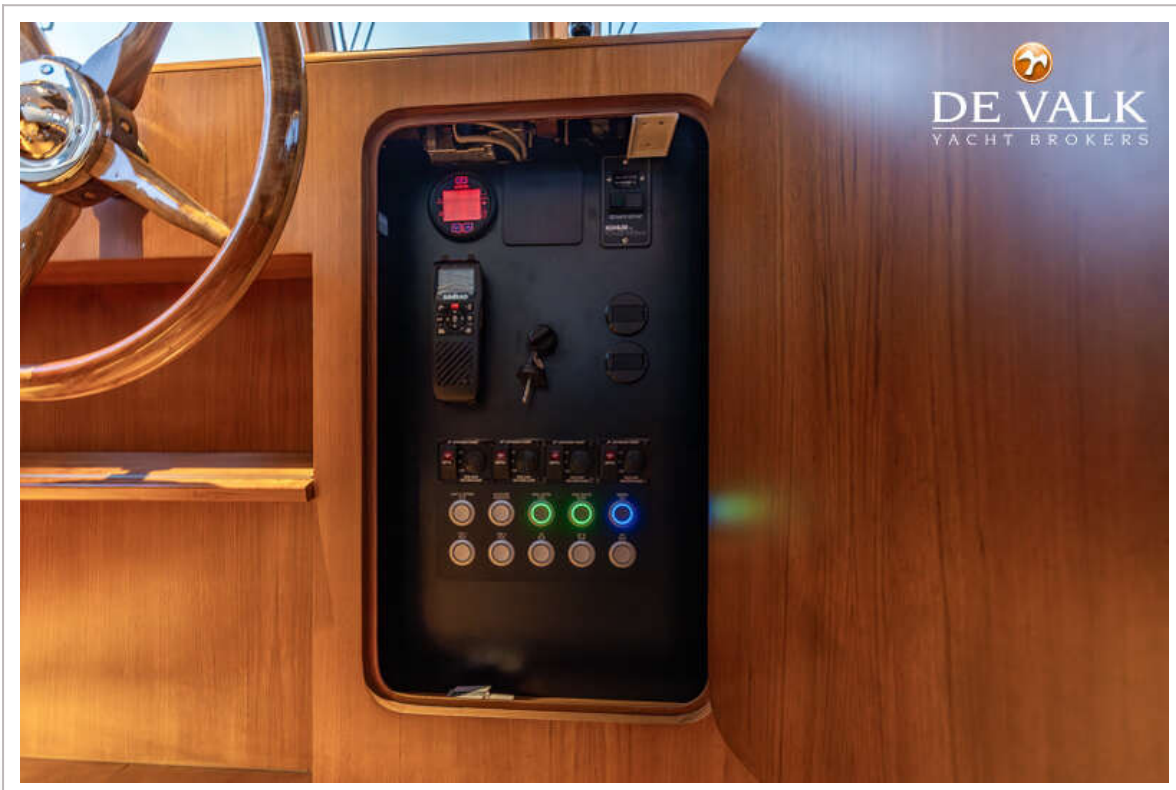
# DOGGERSBANK 1900



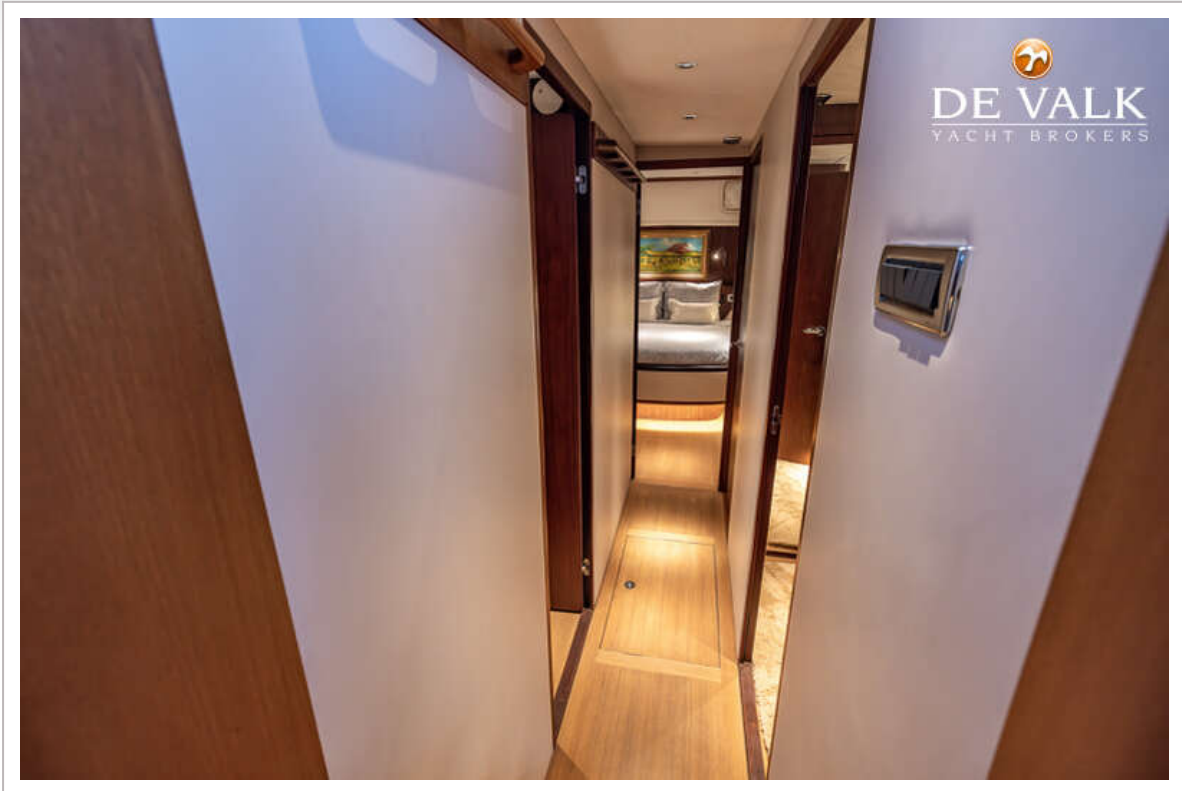
# DOGGERSBANK 1900



# DOGGERSBANK 1900



# DOGGERSBANK 1900



# DOGGERSBANK 1900



# DOGGERSBANK 1900



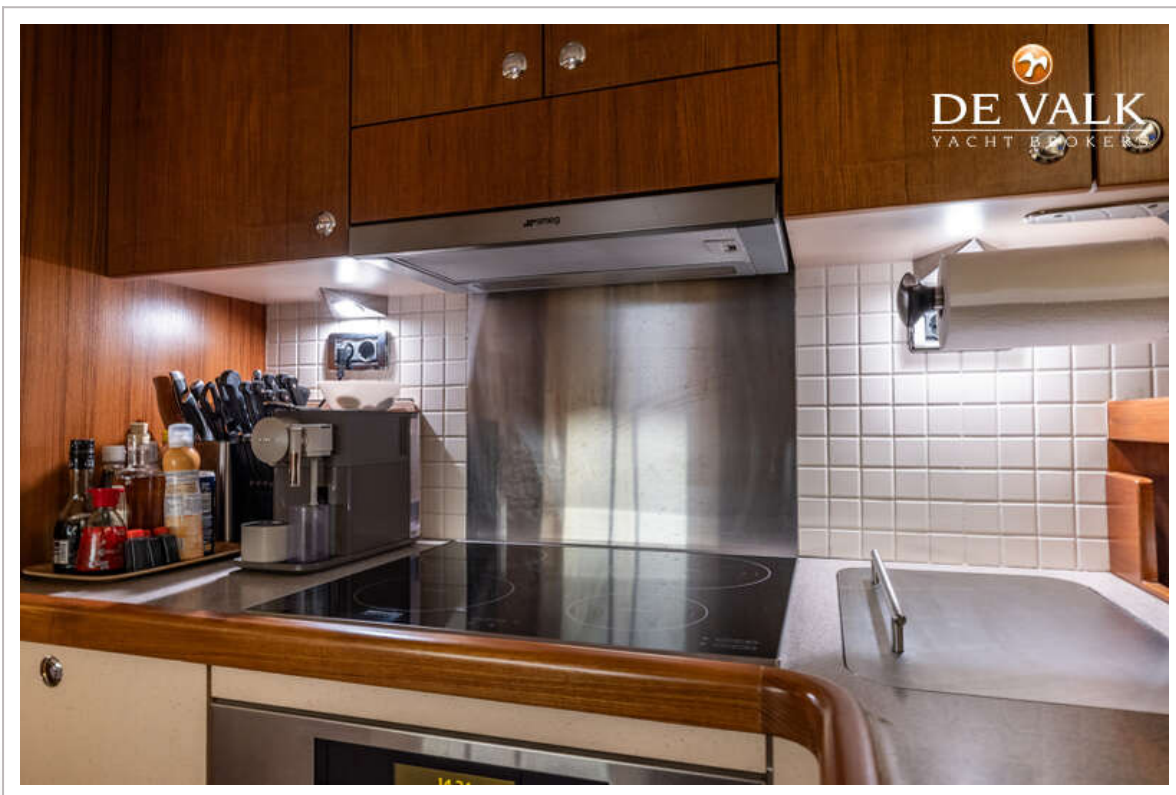
# DOGGERSBANK 1900



# DOGGERSBANK 1900



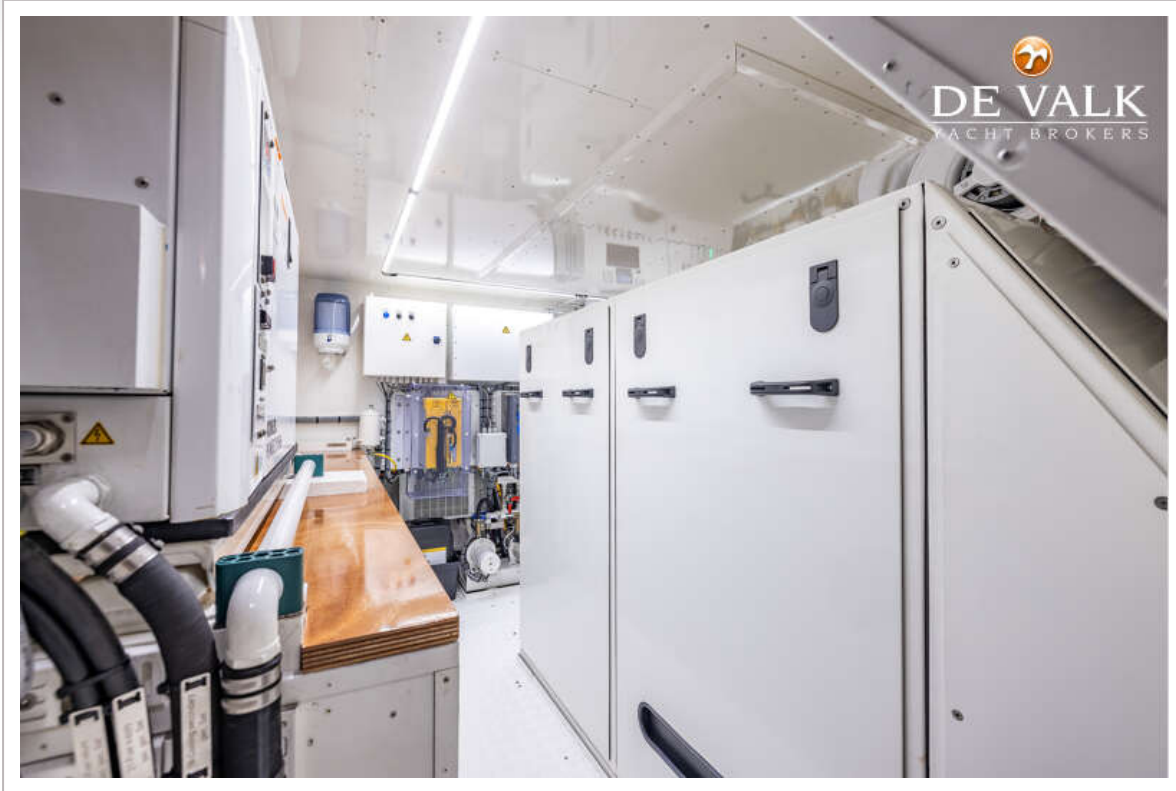
# DOGGERSBANK 1900



# DOGGERSBANK 1900



# DOGGERSBANK 1900



# DOGGERSBANK 1900

