



AQUA STREAM 45

AQUA STREAM 45

BROKER'S COMMENTS

Aqua Stream 45, built in 1995 by President Marine Ltd, Taiwan. Teak finished interior. Comfortable two cabin lay-out, both cabins with double berths and private bathrooms. Spacious saloon, round dinette for 8 people. Generator, electric bow and sternthruster, teak decks. Comfortable and seaworthy motor yacht. Headway 3,95 m.

Peter van Diggele

SPECIFICATIONS

Dimensions	14.00 x 4.65 x 1.15 (m)	Builder	President Marine Ltd
Built	1995	Cabins	2
Material	GRP	Berths	4
Engine(s)	2 x Volvo Penta TAMD 71B Diesel	Hp/Kw	2 x 380.00 (hp), 279.30 (kw)
Asking price	sold (VAT)	Lying	at sales office

CONTACT

Sales office	De Valk Loosdrecht B.V.	Telephone	+31 (0)35 582 90 30
Address	't Breukeleveense Meentje 6 1231LM Loosdrecht / Wijdmeren NL	E-mail	loosdrecht@devalk.nl

DISCLAIMER

These particulars are given in good faith as supplied but cannot be guaranteed.



AQUA STREAM 45

GENERAL

Model	AQUA STREAM 45
Type	motor yacht Motor yacht
LOA (m)	14,00
Beam (m)	4,65
Draft (m)	1,15
Air draft (m)	3,95
Headroom (m)	1,98
Year built	1995
Builder	President Marine Ltd
Country	Taiwan
Displacement (t)	18
Hull material	GRP
Hull colour	White
Hull shape	Deep-V
Superstructure material	GRP
Deck finish	Teak
Window frame	Steenless Steel
Window material	Toughened glass
Fuel tank (litre)	1.000
Level indicator (fuel tank)	yes
Freshwater tank (litre)	1.000
Level indicator (freshwater)	yes
Blackwater tank (litre)	3 x 300
Wheel steering	Hydraulic

ACCOMMODATION

Cabins	2
Berths	4
Interior	Teak
Floor	Teak



AQUA STREAM 45

Pilot house	yes
Saloon	yes
Headroom saloon (m)	2,00
Heating	Diesel ducted hot air
Air-conditioning	Marine Air
Aft Cabin	yes
Dinette	round
Galley	yes
Cooker	Keramic Siemens
Extractor	Siemens
Microwave	Siemens
Fridge	2
Hot water system	Boiler 220v + engine
Water pressure system	Hydrofor
Dishwasher	Eumenia
Owners cabin	French bed
Bathroom	en suite
Toilet system	Manual
Wash basin	in the bathroom
Shower	
Guest cabin 1	Double bed
Bathroom	yes
Toilet system	Chemical
Wash basin	yes

MACHINERY

No of engines	2
Make	Volvo Penta
Type	TAMD 71B
HP	380,00
kW	279,30



AQUA STREAM 45

Fuel	diesel
Year installed	1994
Maximum speed (kn)	30
Engine hours	440
Engine cooling system	Freshwater heatexchanger
Drive	stern
Engine controls	Bowden cable
Gearbox	Hydraulic
Bowthruster	Electric Vetus AB
Sternthruster	Hydraulic Vetus AB
Exhaust	Watercooled
Propeller type	Fixed
Propeller blades	4
Propeller shaft material	Stainless steel
Electric bilge pump	yes
Electrical installation	12/220 Volt
Generator	wet exhaust Kohler
Start battery	2
Service battery	3
Generator battery	1
Bowthruster battery	1
Battery charger	Newmar 40
Inverter	Newmar 2000 W.
Shorepower	yes
Trimtabs	yes

NAVIGATION

Compass	Plastimo
Depth sounder	Autohelm ST 50
Log	Autohelm ST 50
VHF	Shipmate RS 8300



Autopilot	Autohelm ST 7000
GPS	Raymarine RC 635 I
Plotter	Raymarine RC 635 I

EQUIPMENT

Bimini	yes
Bathing platform	yes
Boarding ladder	yes
Gangway	yes
Anchor	yes
Anchor chain	yes
Sea railing	Stainless steel
Railing side opening gates	yes
Wiper	yes
Radio-cd player	Sony
Clock - barometer	yes



AQUA STREAM 45



AQUA STREAM 45



AQUA STREAM 45



AQUA STREAM 45



AQUA STREAM 45



AQUA STREAM 45



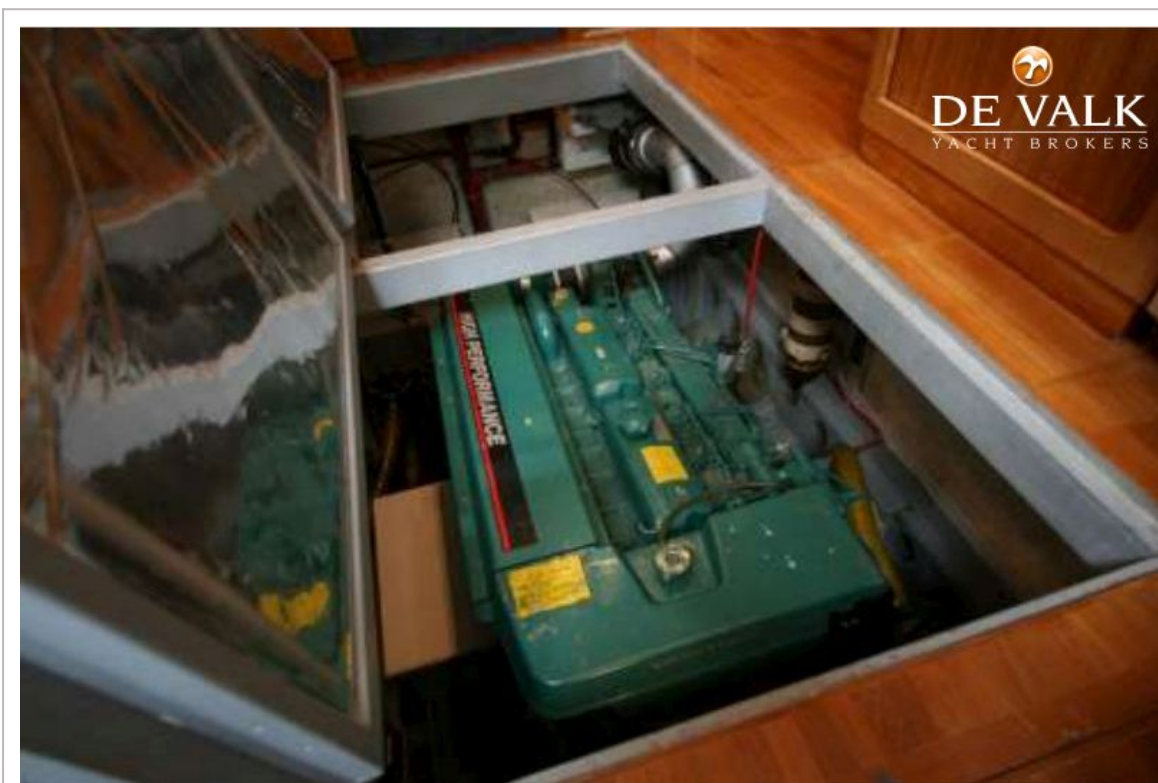
AQUA STREAM 45



AQUA STREAM 45



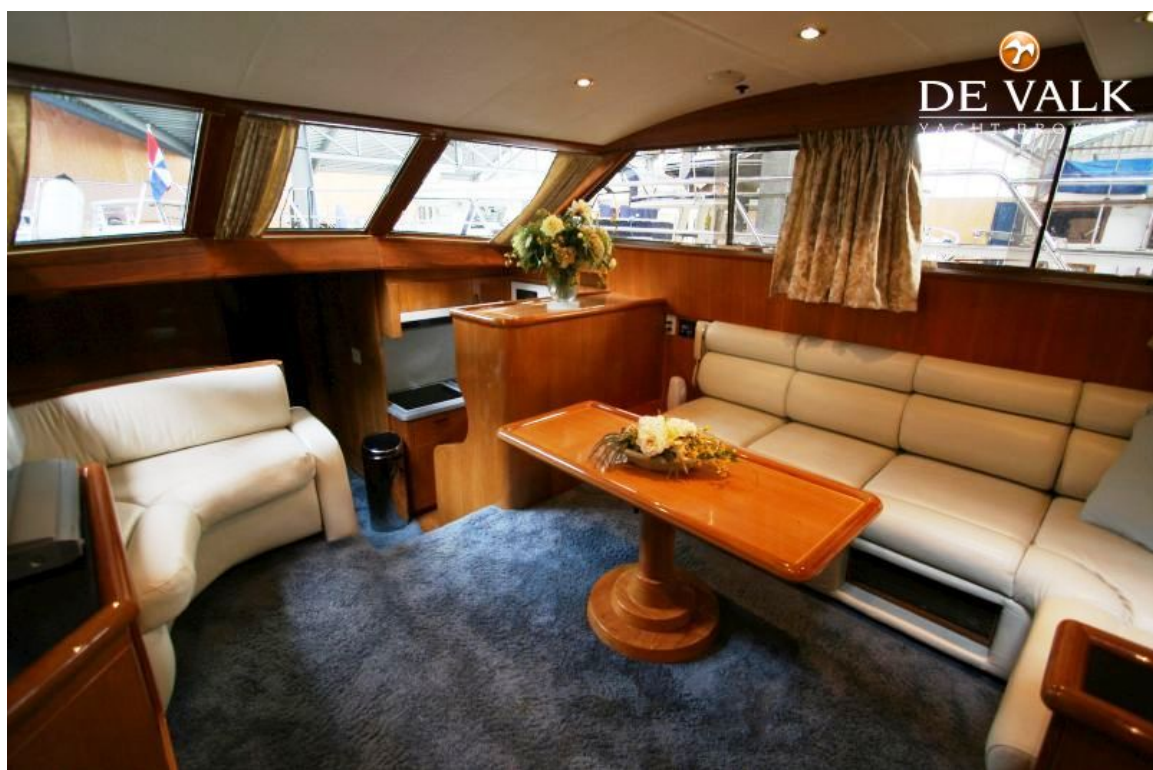
AQUA STREAM 45



AQUA STREAM 45



AQUA STREAM 45



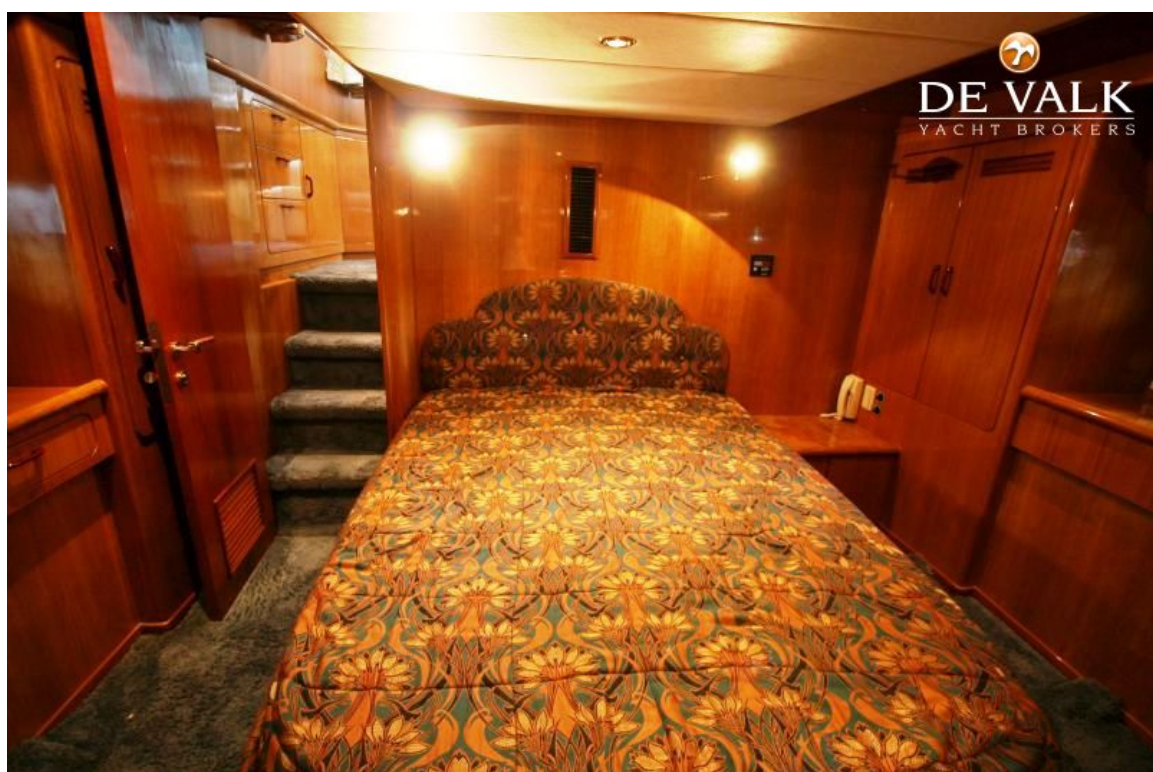
AQUA STREAM 45



AQUA STREAM 45



AQUA STREAM 45



AQUA STREAM 45

