



DE VALK
YACHT BROKERS



MISTRAL 1300



DE VALK
YACHT BROKERS

MISTRAL 1300

BROKER'S COMMENTS

You are very welcome to visit this steel motor yacht "Nutshell" in our covered sales harbor in Sneek. Be suprised by the amount of space inside with a large settee in the saloon, dinette and two double berths.

Arne Doodeman

SPECIFICATIONS

Dimensions	13.70 x 4.05 x 1.35 (m)	Builder	Mekon/Dorr
Built	1992	Cabins	2
Material	Steel	Berths	6
Engine(s)	1 x Ford Lehman SL135L diesel	Hp/Kw	135.00 (hp), 99.22 (kw)
Asking price	sold (VAT)	Lying	at sales office

CONTACT

Sales office	De Valk Sneek	Telephone	+31 515 42 80 30
Address	Zwolsmanweg 7 8606 KC Sneek The Netherlands	E-mail	sneek@devalk.nl

DISCLAIMER

These particulars are given in good faith as supplied but cannot be guaranteed.



MISTRAL 1300

GENERAL

Model	MISTRAL 1300
Type	motor yacht
LOA (m)	13,70
LWL (m)	13,20
Beam (m)	4,05
Draft (m)	1,35
Air draft (m)	3,35
Headroom (m)	2,10
Year built	1992
Builder	Mekon/Dorr
Country	The Netherlands
Designer	Klaas Bes
Displacement (t)	20
Ballast (tonnes)	yes
Hull material	steel
Hull colour	white
Hull shape	multi hard chine
Keel type	bilge keels
Superstructure material	steel
Rubbing strake	stainless steel
Deck material	steel
Deck finish	teak
Superstructure deck finish	paint
Cockpit deck finish	teak Aftdeck
Antifouling (year)	2013 (see comments)
Window frame	aluminium
Window material	double glazing
Deckhatch	yes
Portholes	aluminium
Insulation	rockwool



MISTRAL 1300

Radar arch	collapsible Mast
Mast can be lowered	manual
Fuel tank (litre)	steel 500
Fuel tank 2 (litre)	steel 500
Level indicator (fuel tank)	yes
Freshwater tank (litre)	stainless steel 1000
Level indicator (freshwater)	yes
Blackwater tank (litre)	steel
Level indicator (blackwater)	yes
Blackwater tank extraction	deck extraction + pump
Wheel steering	hydraulic
Outside helm position	hydraulic
More info on paintwork	hull below the waterline shows some blistering

ACCOMMODATION

Cabins	2
Berths	6
Interior	mahogany
Floor	parquet
Aft deck	Teak
Saloon	yes
Headroom saloon (m)	2,10 m
Heating	diesel ducted hot air Maritime Booster mini II combi
Aft Cabin	yes
Dinette	yes
Dinette to convert into berth	yes
Galley	yes
Countertop	plastic
Sink	stainless steel
Cooker	calor gas 5 Burner Boretti
Extractor	ECS



MISTRAL 1300

Microwave	Sharp R-2v11
Fridge	with freezer compartment Engel SRBT 51088F
Freezer	Beko FCN 1050
Hot water system	on central heating Maritime booster
Water pressure system	electrical Jabsco 31755
Owners cabin	French bed
Bed length (m)	2,00 m
Wardrobe	hanging/drawers/shelves
Bathroom	yes
Toilet	shared Compact
Toilet system	electric
Wash basin	in the bathroom
Shower	shared
Guest cabin 1	double bed
Bed length (m)	2,00 m
Wardrobe	shelves and hanging
Washing machine	Candy Aquamatic 8T
Dryer	Creda T301

MACHINERY

No of engines	1
Make	Ford Lehman
Type	SL135L
HP	135,00
kW	99,22
Fuel	diesel
Year installed	1992
Maximum speed (kn)	8,8
Cruising speed (kn)	6,6
Consumption (l/hr)	4
Range (nm)	1100



MISTRAL 1300

Engine hours	2593,8 (27-2-2015)
Engine cooling system	freshwater heat exchanger
Drive	shaft
Engine controls	bowden cable
Gearbox	mechanical Velvet 2,91 : 1
Bowthruster	electric
Sternthruster	electric
Exhaust	watercooled
Propeller type	fixed
Propeller blades	4
Propeller shaft material	stainless steel
Shaft lubrication	water
Electric bilge pump	yes
Bilge alarm	via SMS
Generator	wet exhaust
Running hours generator	1123
Start battery	Wilco 85 Ah.
Service battery	1x 900 amp 2 Volt cells (2014) Hawker 6-8 p25640
Bowthruster battery	2x 120 Ah. Correct marine
Sternthruster battery	2x 120 Ah. Solite
Battery monitor	yes
Battery charger/inverter	Victron Phoenix multiplus 12-3000-120
Diode battery combiners	yes
Shorepower	with cable

NAVIGATION

Compass	yes
Electric compass	Raytheon ST60
Depth sounder	Raytheon ST60
Log	Raytheon ST60
Windset	Raytheon ST60



VHF	Shipmate RS8100
Autopilot	Raytheon ST6000+
Rudder angle indicator	Raytheon ST60
Radar/GPS/plotter	Raymarine C80
PC connection	WiFi
Electronic chart(s)	1x

EQUIPMENT

Fixed windscreen	can be lowered
Sprayhood	Blauw
Cockpit cover	yes
Sun awning	yes
Bathing platform	yes
Boarding ladder	stainless steel
Anchor	Danforth
Anchor chain	yes
Windlass	manual Vetus
Capstan	yes
Deck wash	yes
Davits	stainless steel
Davits controls	manual
Sea railing	stainless steel
Grab rail (superstructure)	stainless steel
Danbuoy	yes
Horn	electric Defect
Radar reflector	yes
Fenders	10x
Mooring lines	yes
Alarm system	yes
TV	Flatscreen LG
TV receiver	yes



Satellite	yes
Radio-cd player	Alpine 1DA-x001
Speakers in salon	yes
Fire extinguisher	yes
Latest extinguisher survey	2013
Extinguisher in engine room	yes



MISTRAL 1300



MISTRAL 1300



MISTRAL 1300



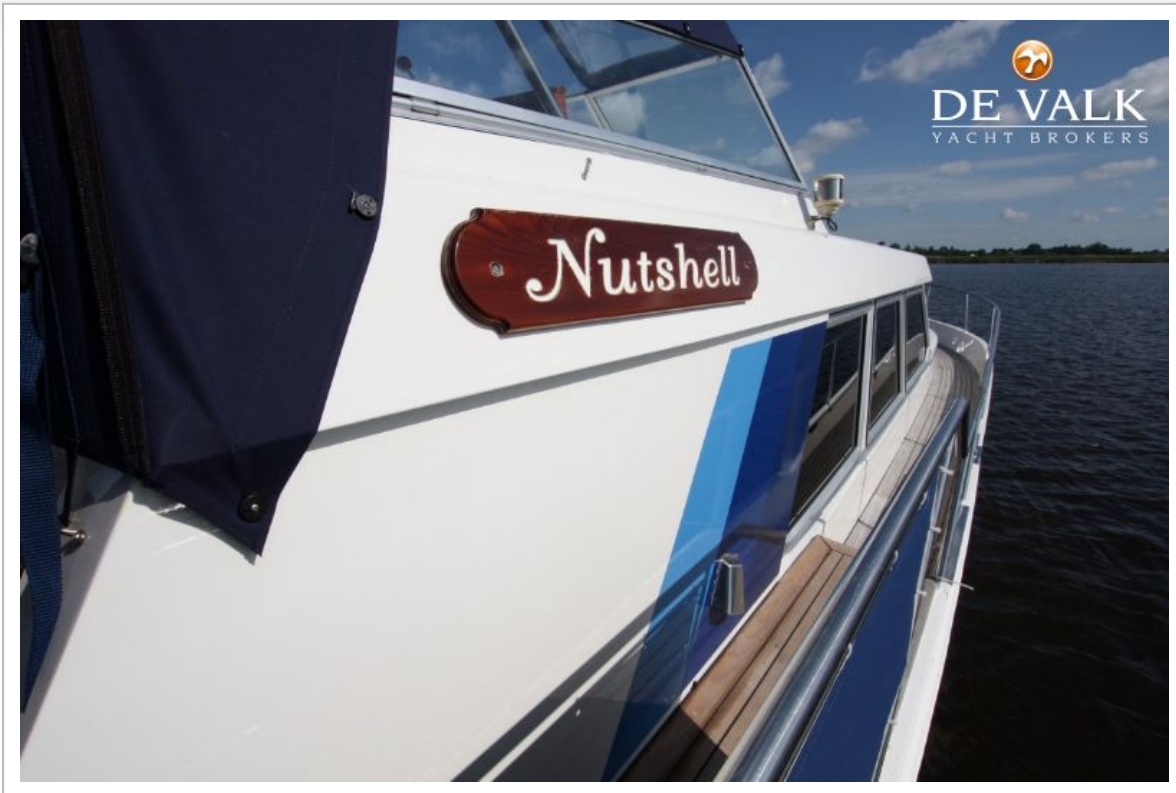
MISTRAL 1300



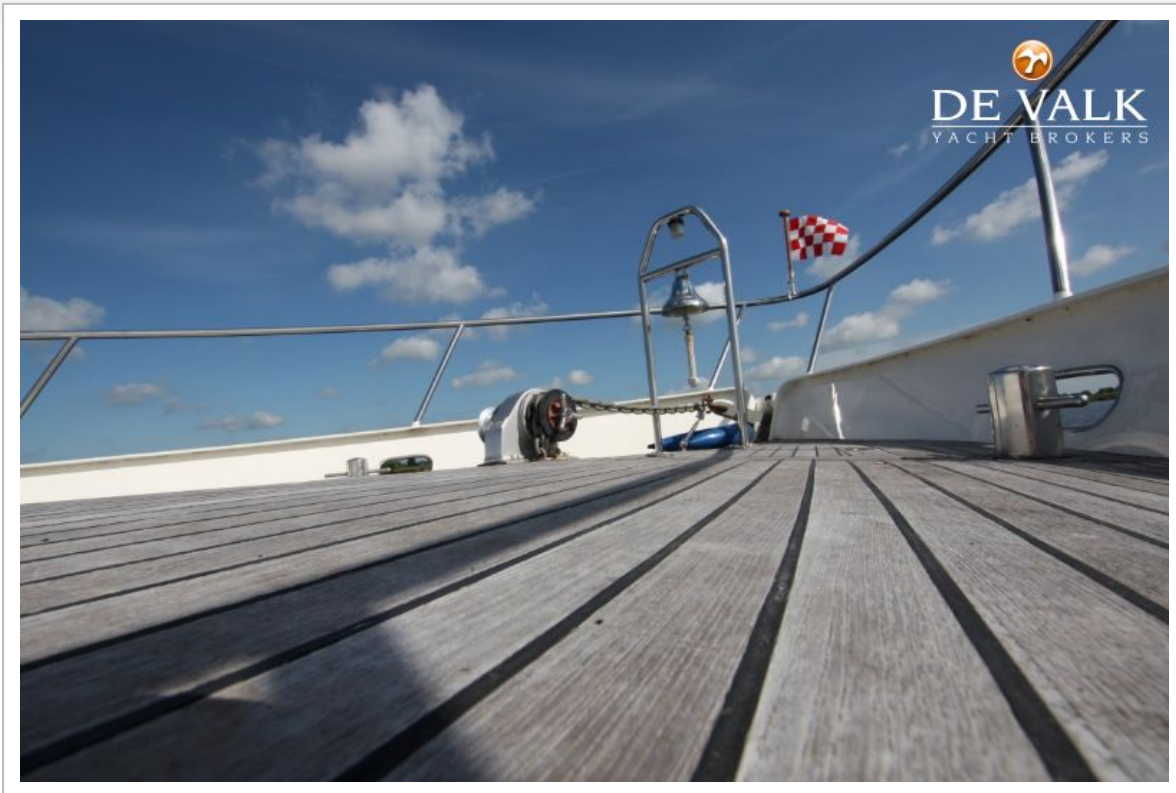
MISTRAL 1300



MISTRAL 1300



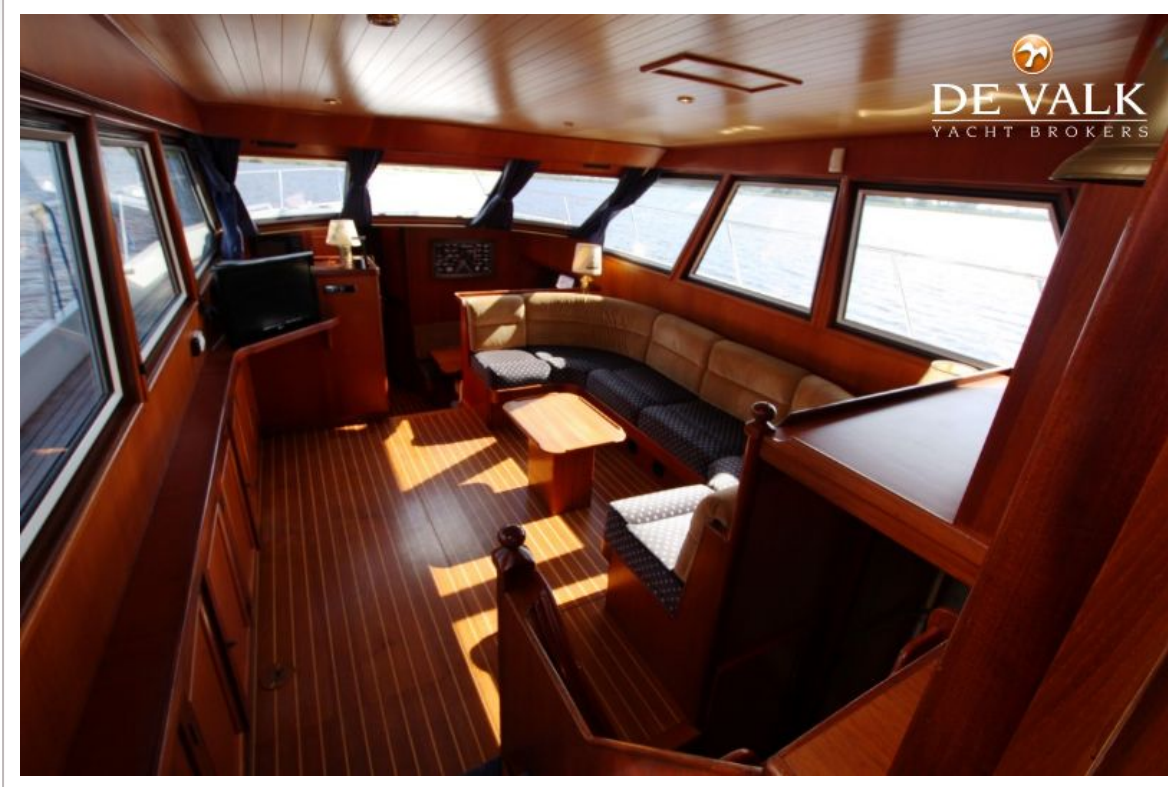
MISTRAL 1300



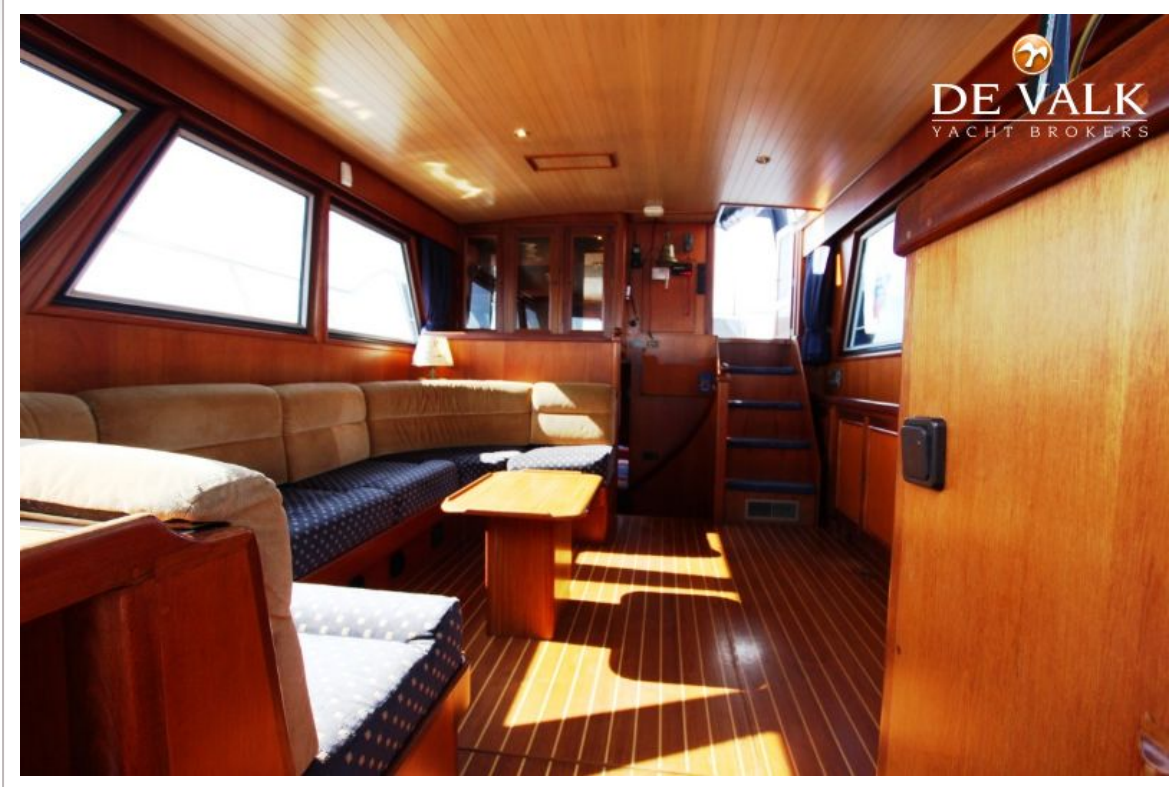
MISTRAL 1300



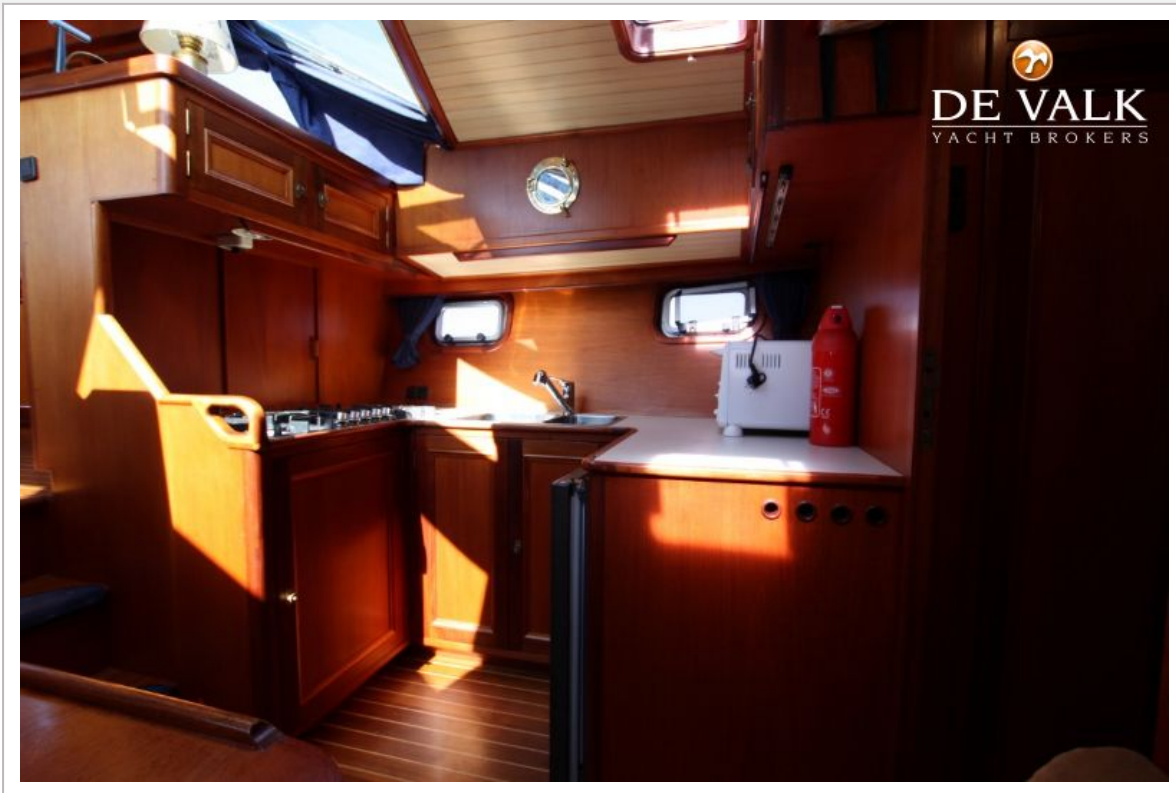
MISTRAL 1300



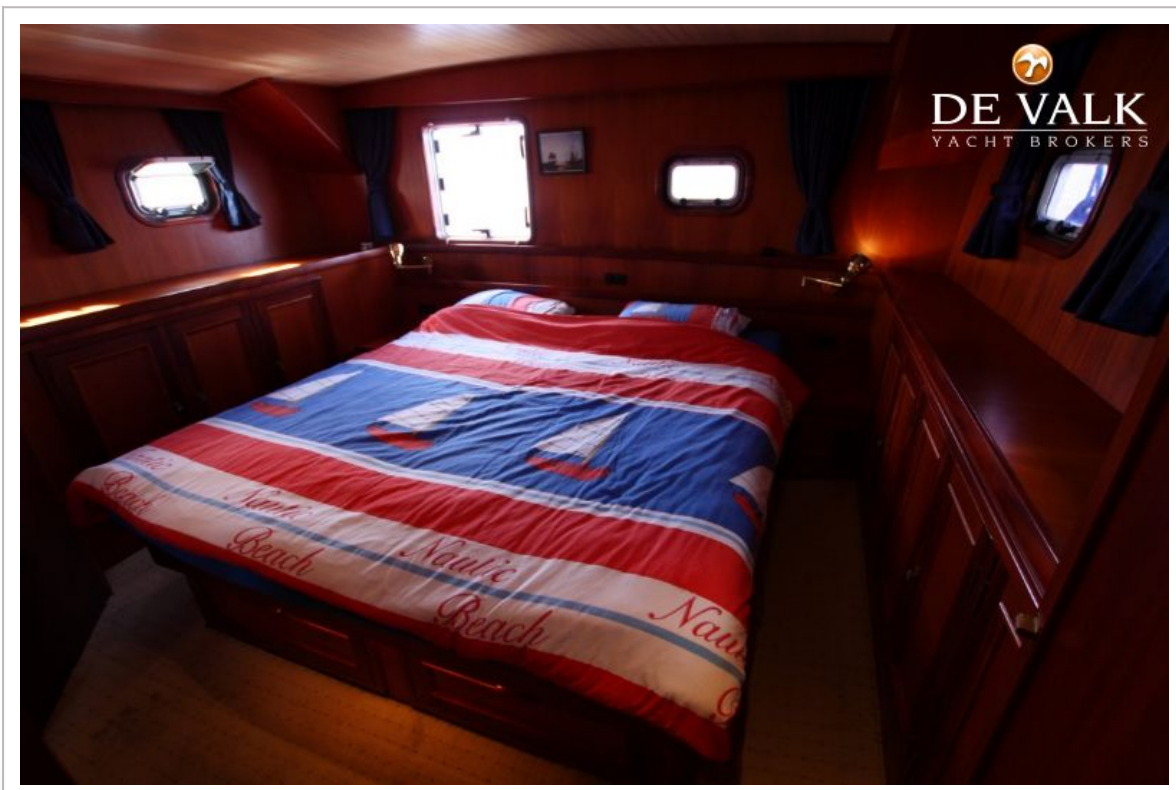
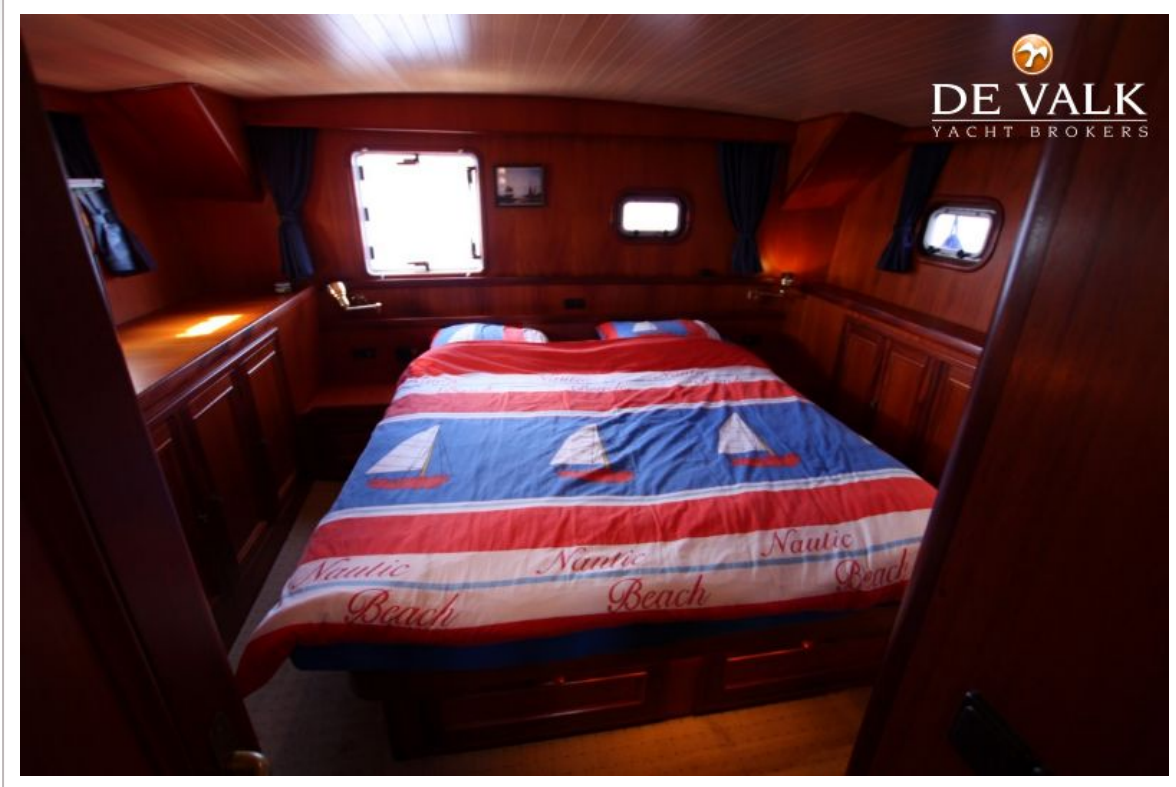
MISTRAL 1300



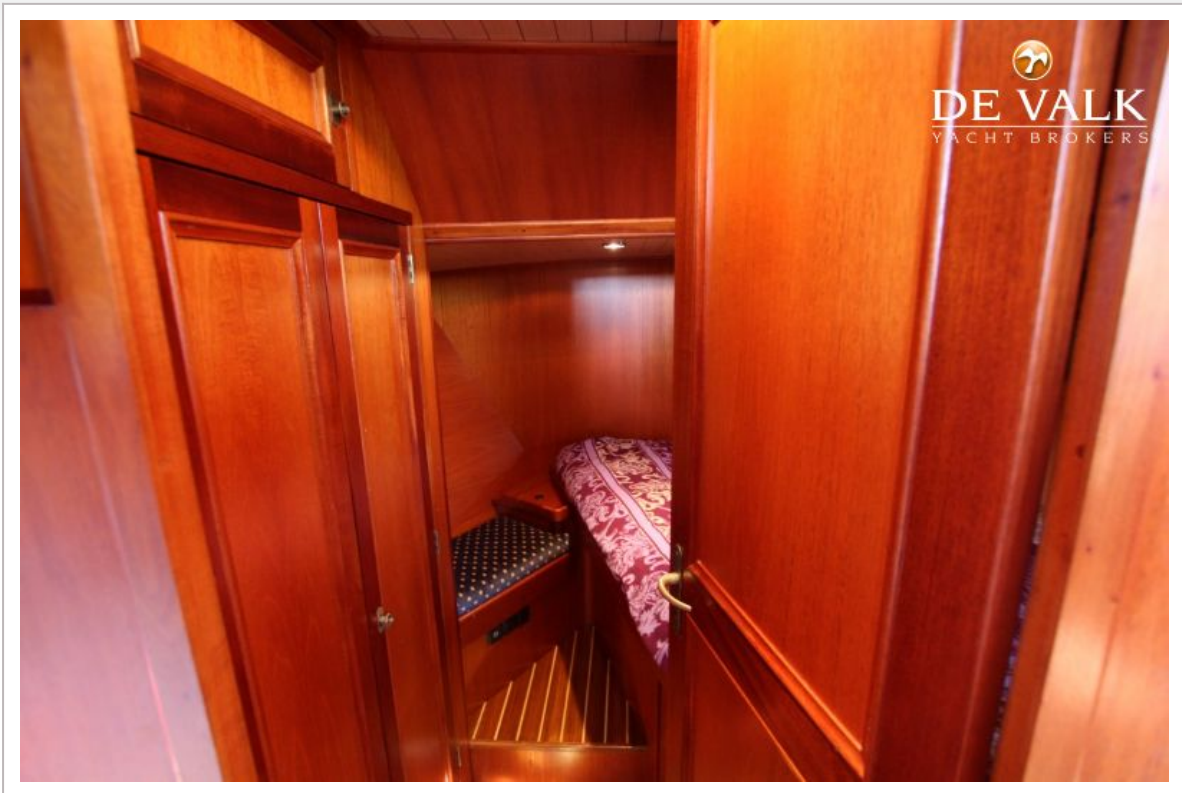
MISTRAL 1300



MISTRAL 1300



MISTRAL 1300



MISTRAL 1300

