



DUTCH STEEL MOTOR YACHT



DUTCH STEEL MOTOR YACHT

BROKER'S COMMENTS

Dutch built steel motor yacht. Equipped with double Gardner diesel engines, stabilizers, 16 kW electric bow thruster, three cabin lay-out, crew cabin etc. ASKING PRICE IS NEGOTIABLE, please make an offer.

Arne Doodeman

SPECIFICATIONS

Dimensions	22.40 x 5.49 x 2.36 (m)	Builder	Scheepswerf Vooruit Zaandam
Built	1965	Cabins	5
Material	Steel	Berths	9
Engine(s)	2 x Gardner Diesel	Hp/Kw	2 x 127.00 (hp), 93.35 (kw)
Asking price	sold (VAT)	Lying	elsewhere / Not at sales office

CONTACT

Sales office	De Valk Sneek	Telephone	+31 (0)515 42 80 30
Address	Zwolsmanweg 7 8606 KC Sneek NL	E-mail	sneek@devalk.nl

DISCLAIMER

These particulars are given in good faith as supplied but cannot be guaranteed.



DUTCH STEEL MOTOR YACHT

GENERAL

Model	DUTCH STEEL MOTOR YACHT
Type	motor yacht
LOA (m)	22,40
Beam (m)	5,49
Draft (m)	2,36
Year built	1965
Builder	Scheepswerf Vooruit Zaandam
Country	The Netherlands
Designer	H.H.C. Baars
Displacement (t)	83
Hull material	steel
Hull colour	white
Hull shape	roundbilged
Keel type	long keel
Superstructure material	steel
Deck finish	teak
Window frame	stainless steel
Window material	glass
Flybridge	yes
Mast can be lowered	yes
Fuel tank (litre)	12740
Freshwater tank (litre)	8190
Blackwater tank (litre)	2000
Wheel steering	mechanical
Tiller	yes
More info on paintwork	Completely repainted in 2009

ACCOMMODATION

Cabins	5
Berths	9



DUTCH STEEL MOTOR YACHT

Crew cabin	two of the cabins are crew cabins
Crew berths	1 double and 1 single
Interior	teak
Floor	carpet
Aft deck	yes
Saloon	yes
Heating	yes
Air-conditioning	2x Marina
Galley	yes
Countertop	yes
Cooker	Gaggenau
Oven	yes
Microwave	yes
Fridge	yes
Freezer	yes
Hot water system	2x boiler
Water pressure system	yes
Dishwasher	Siemens
Owners cabin	double bed
Wardrobe	yes
Bathroom	en suite
Toilet	yes
Wash basin	yes
Shower	yes
Guest cabin 1	double bed
Wardrobe	yes
Bathroom	en suite
Toilet	yes
Wash basin	yes
Shower	yes
Guest cabin 2	double bed
Wardrobe	yes



DUTCH STEEL MOTOR YACHT

Bathroom	en suite
Toilet	yes
Wash basin	yes
Shower	yes
Washing machine	Miele
Dryer	Siemens

MACHINERY

No of engines	2
Make	Gardner
HP	127,00
kW	93,35
Fuel	diesel
Maximum speed (kn)	10
Cruising speed (kn)	8,5
Engine cooling system	seawater
Gearbox	hydraulic
Bowthruster	electric 16 kW
Propeller type	fixed
Propeller blades	3-bladed
Electric bilge pump	yes
Electrical installation	12/24/220
Generator	Mitsubishi 16 kW (1997)
Generator 2	Mitsubishi 20 kW (2003)
Batteries	yes
Battery charger	2x Victron
Inverter	2x Mastervolt
Shorepower	with cable
Watermaker	90 L/ph
Stabilizers	fin Vosper



NAVIGATION

Compass	VDO
Depth sounder	VDO
Log	VDO
Windset	VDO
Fish finder	Furuno
VHF	Simrad
Autopilot	Robertson
Radar	Simrad
Plotter	Simrad
Weather receiver	Fastnet
Radio receiver	Icom SSB
Transmitter	Nera Inmarsat M+fax
Searchlight	yes

EQUIPMENT

Cockpit table	yes
Cockpit chairs	yes
Boarding ladder	yes
Gangway	hydraulic (2014)
Deck shower	yes
Anchor	yes
Anchor chain	yes
Windlass	electrical
Windlass aft	yes
Deck wash	yes
Dinghy	Williams Jet 100 hp & Novomarine
Deck crane	electric Stainless steel
Sea railing	yes
Life raft	2x 8 pers (2004)
Lifejackets	10



DUTCH STEEL MOTOR YACHT

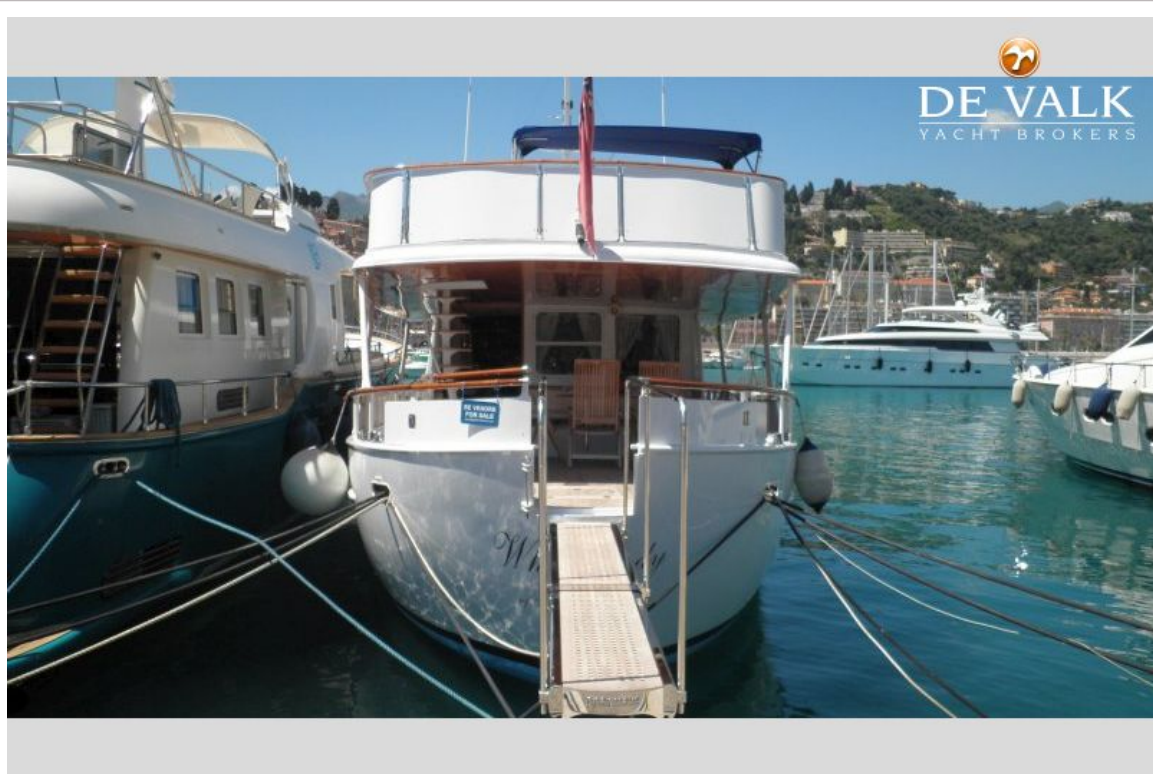
Wiper	yes
Fenders	yes
Mooring lines	yes
TV	yes
TV receiver	yes
Radio-cd player	Blaupunkt



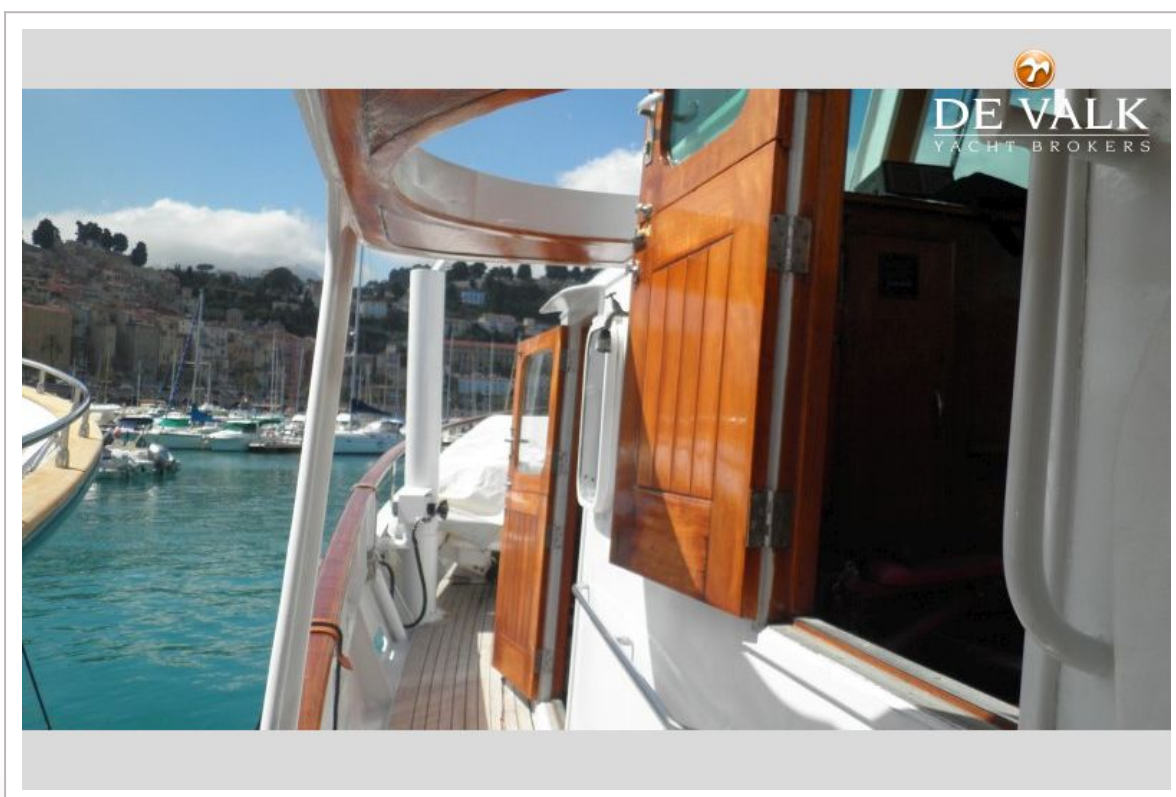
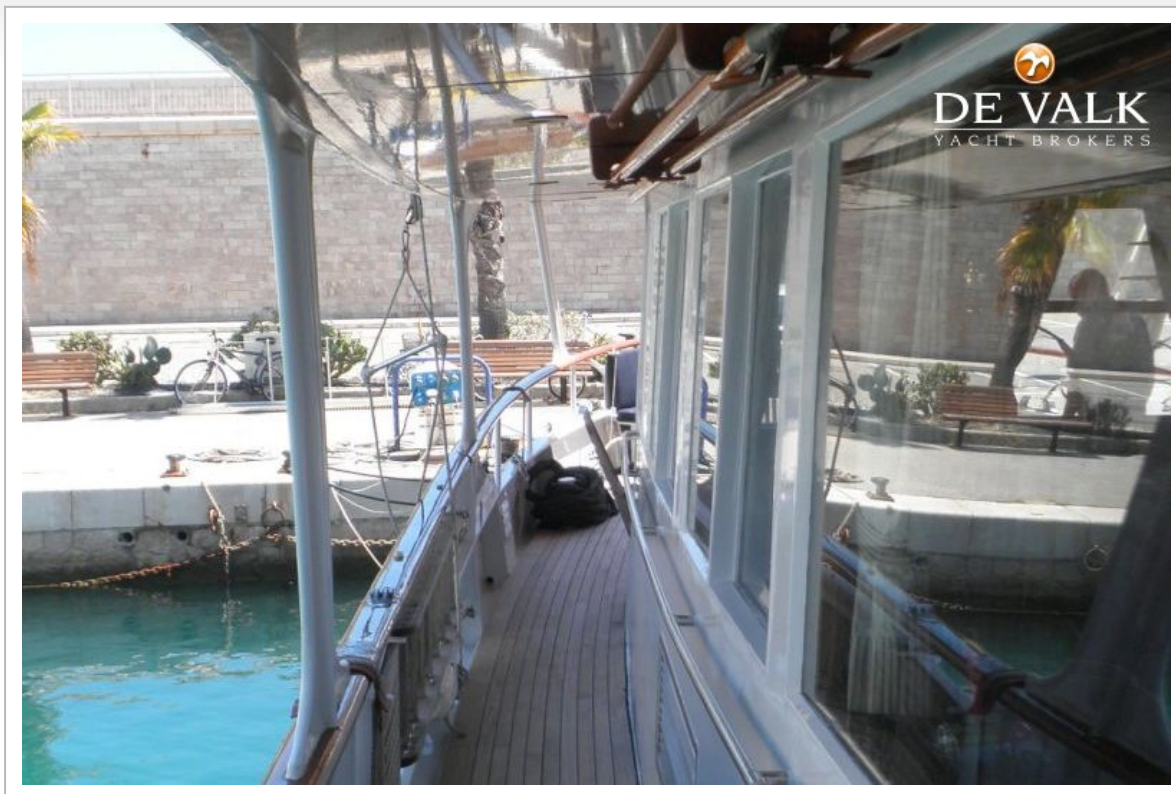
DUTCH STEEL MOTOR YACHT



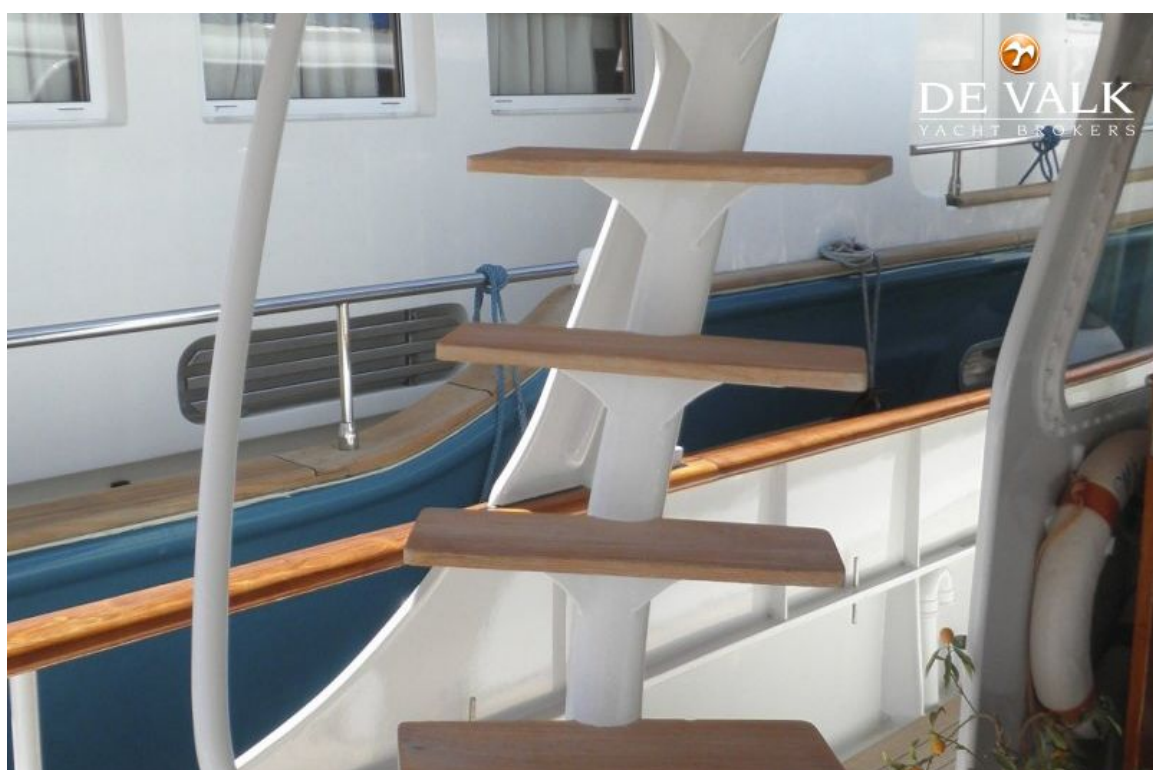
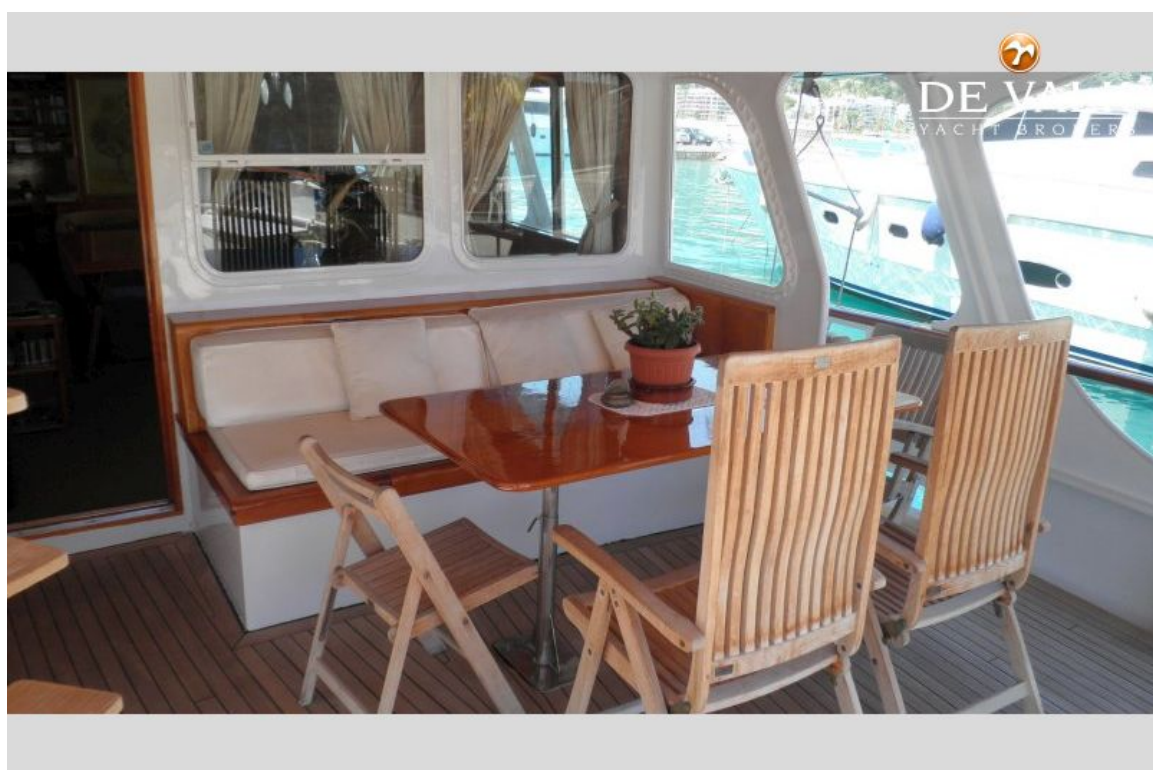
DUTCH STEEL MOTOR YACHT



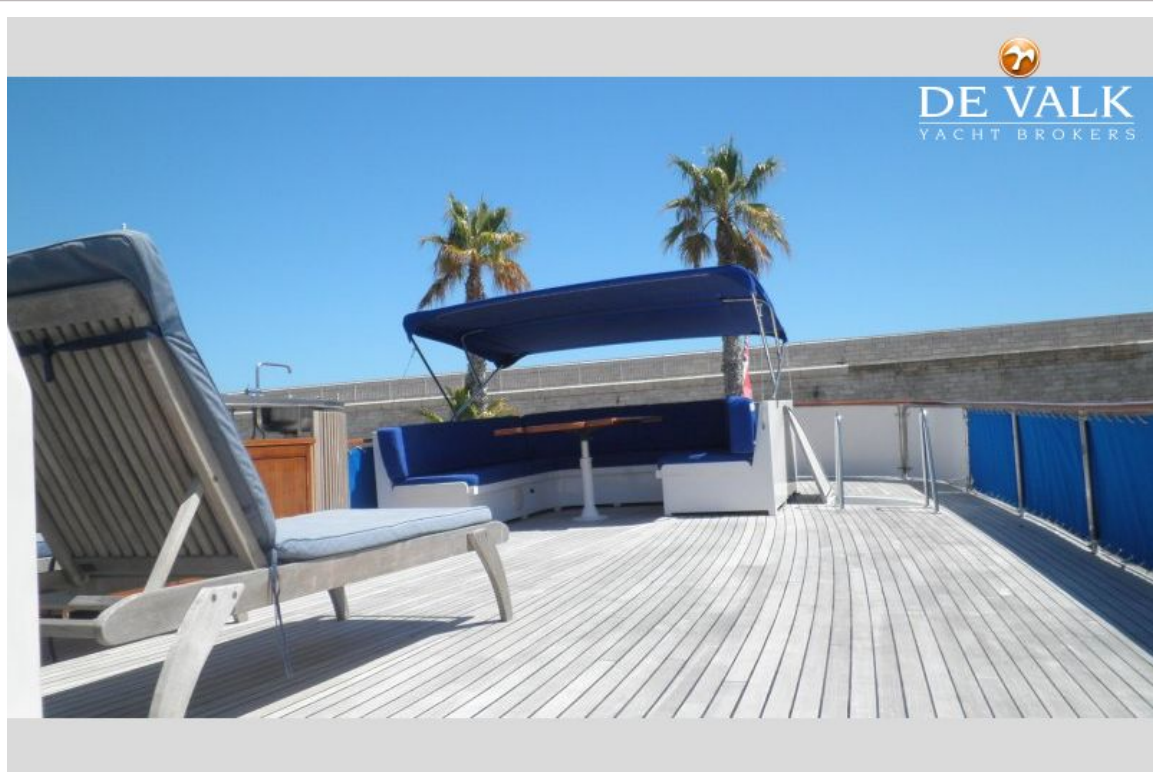
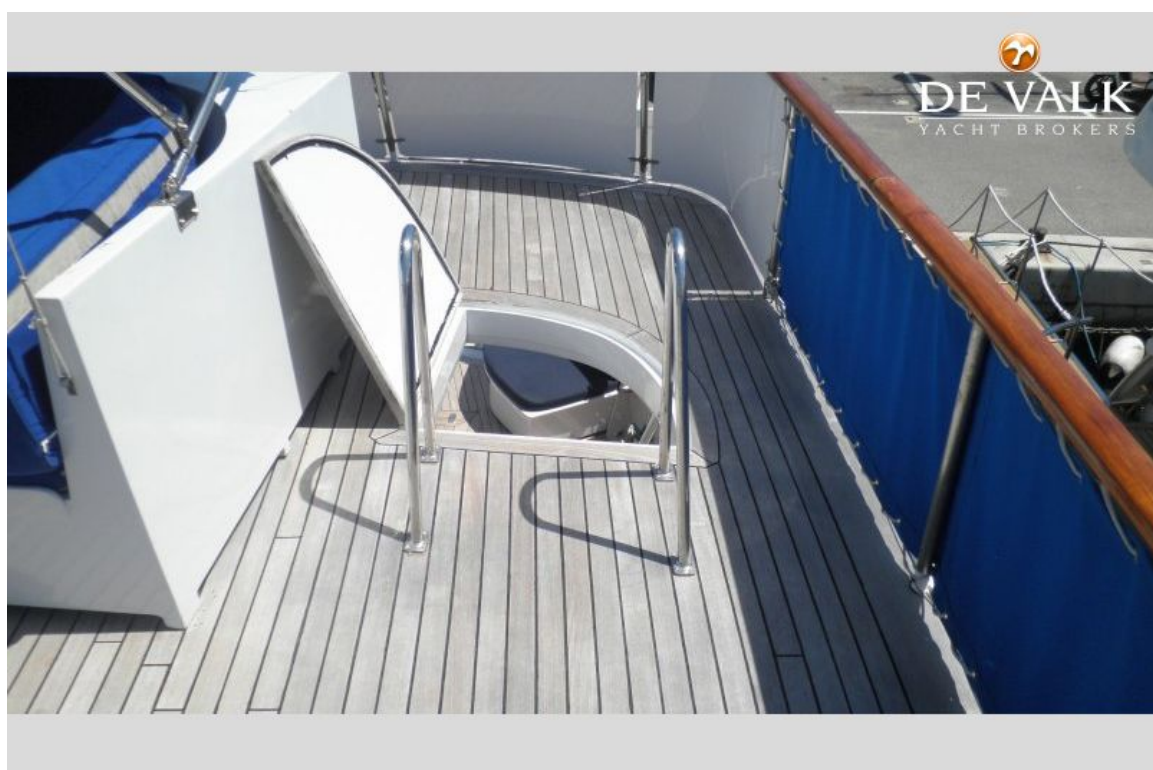
DUTCH STEEL MOTOR YACHT



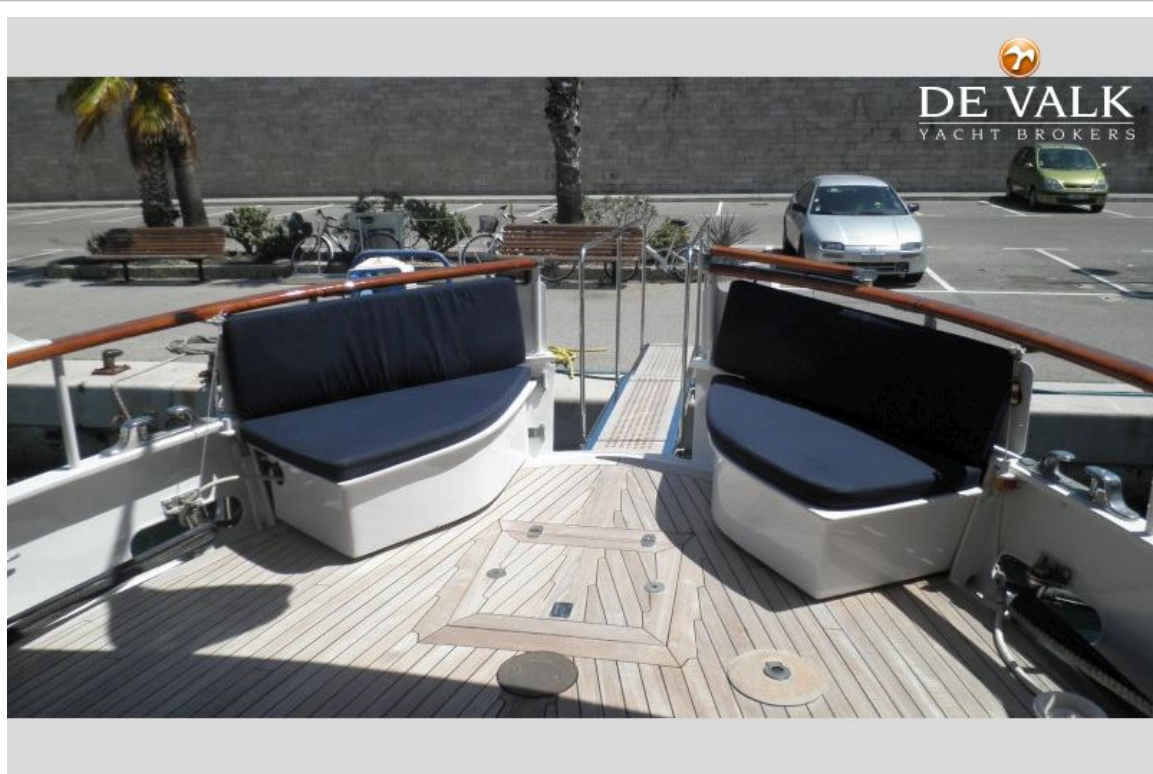
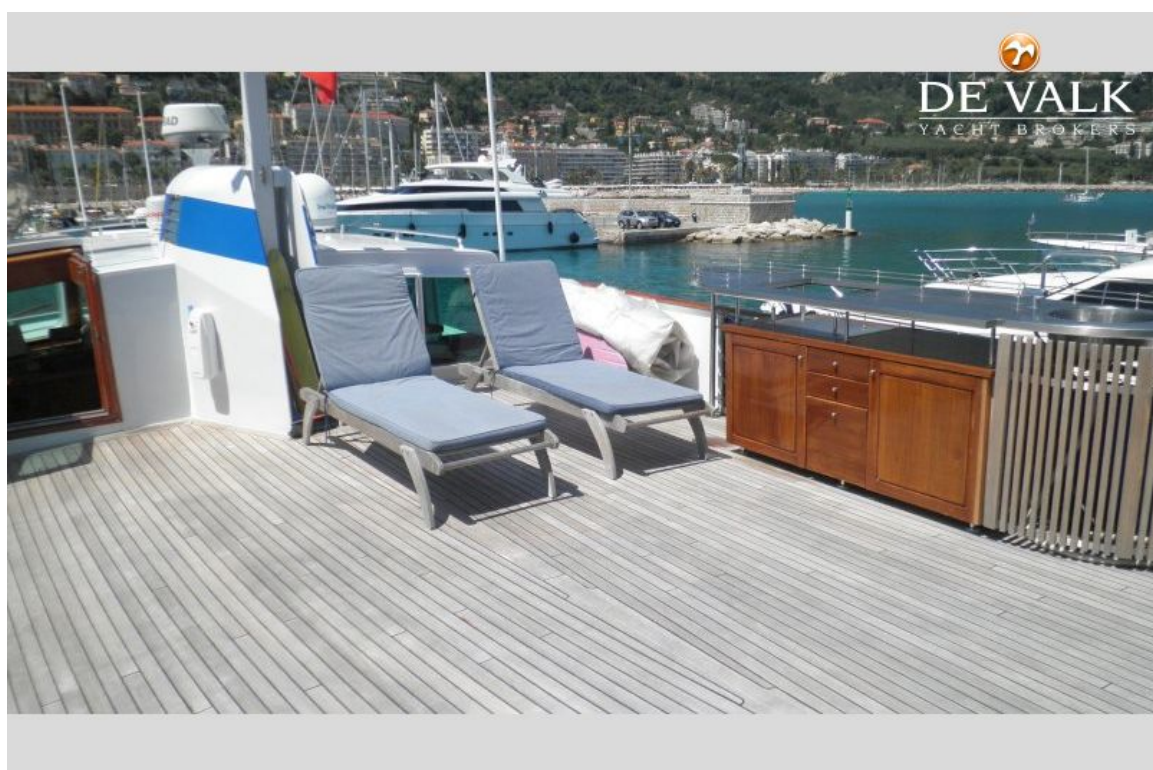
DUTCH STEEL MOTOR YACHT



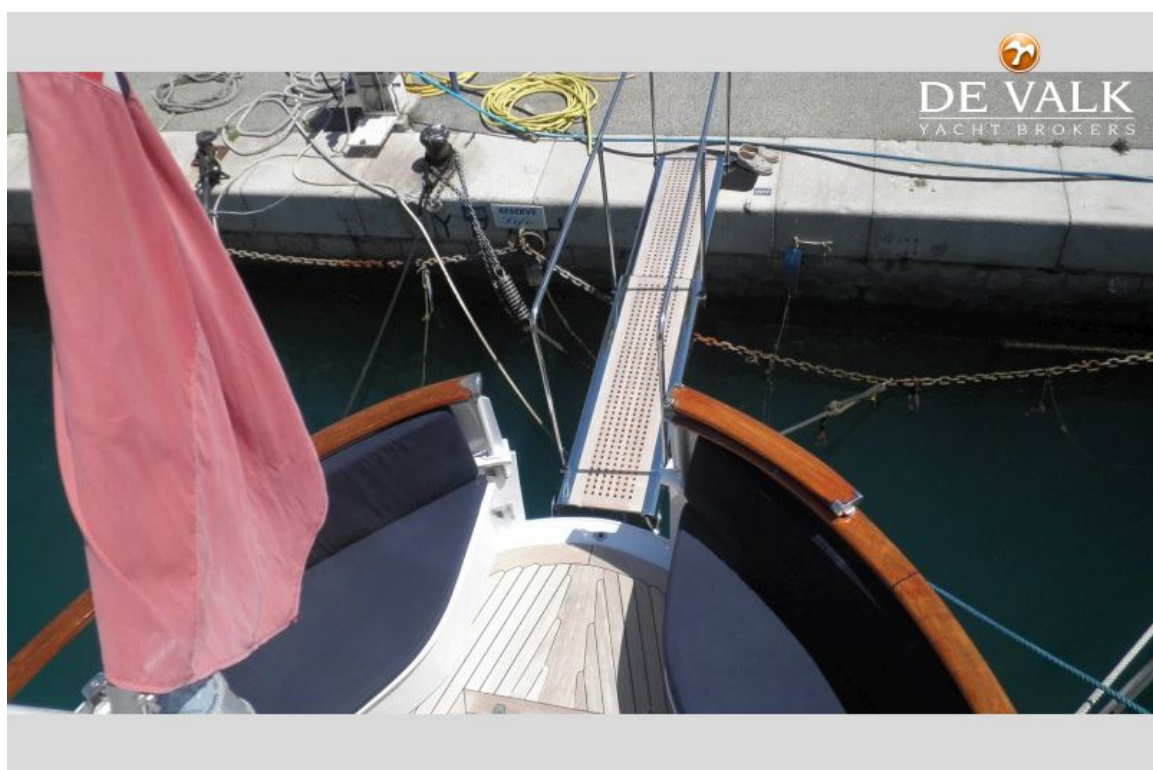
DUTCH STEEL MOTOR YACHT



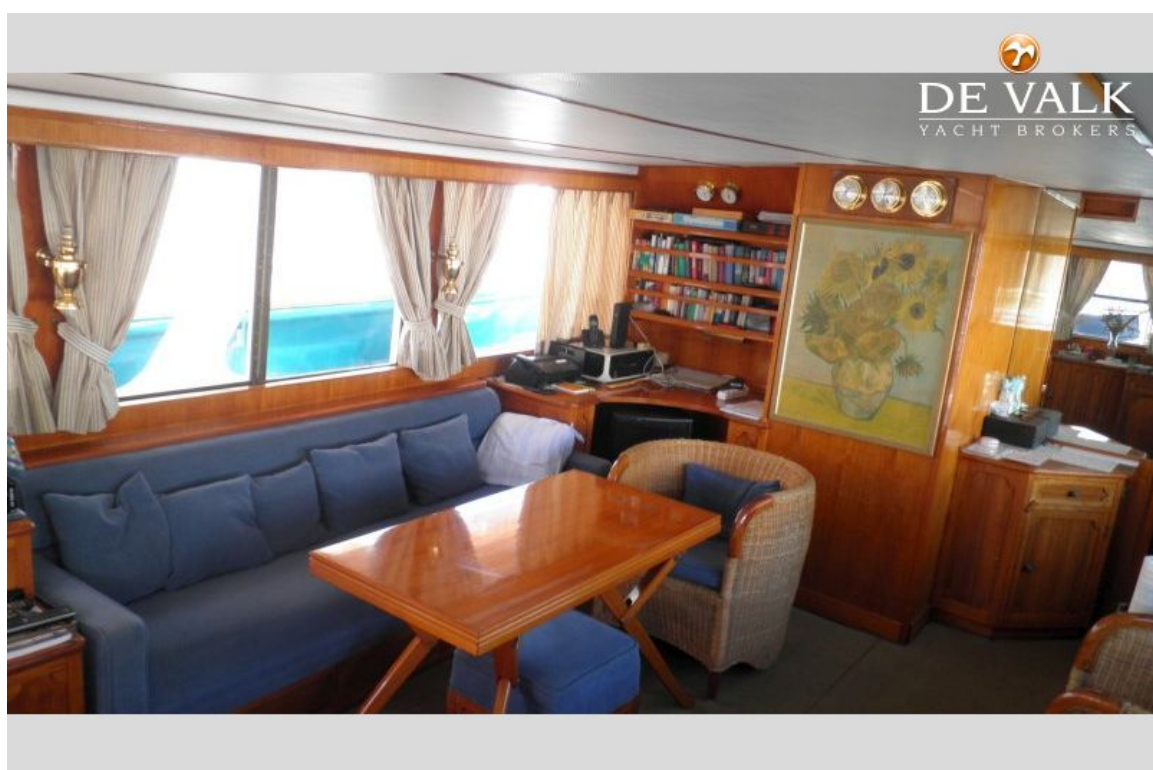
DUTCH STEEL MOTOR YACHT



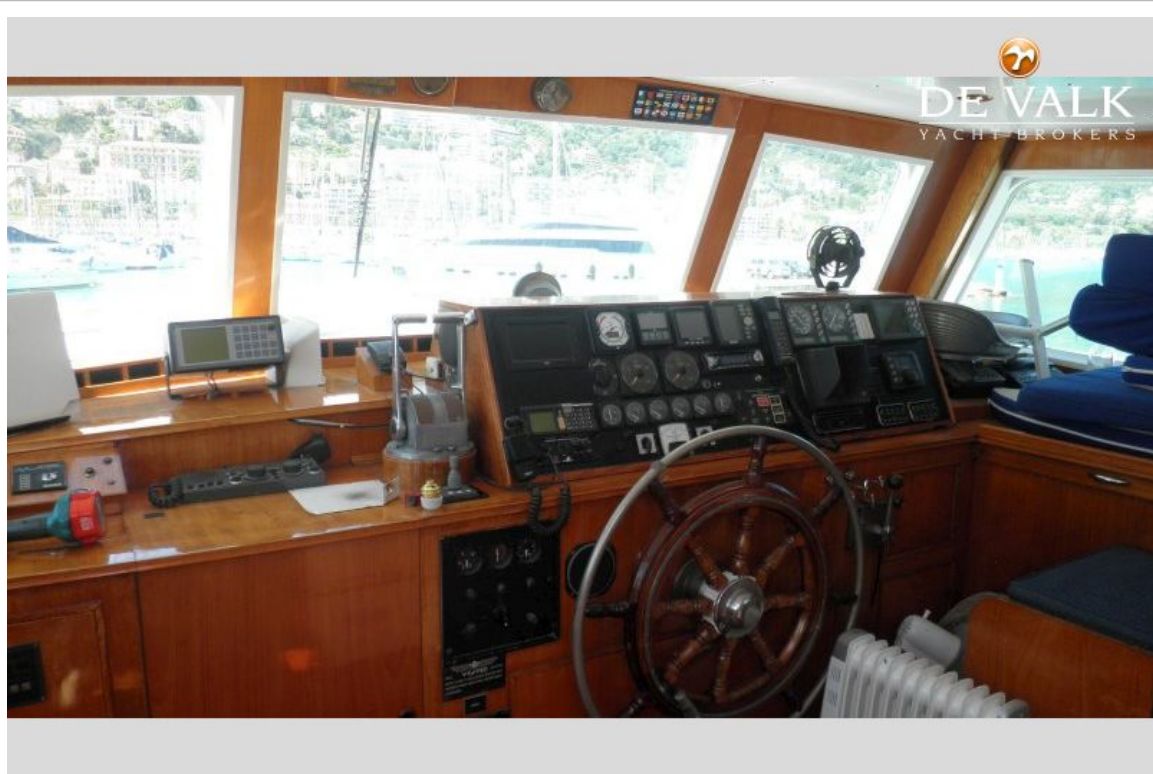
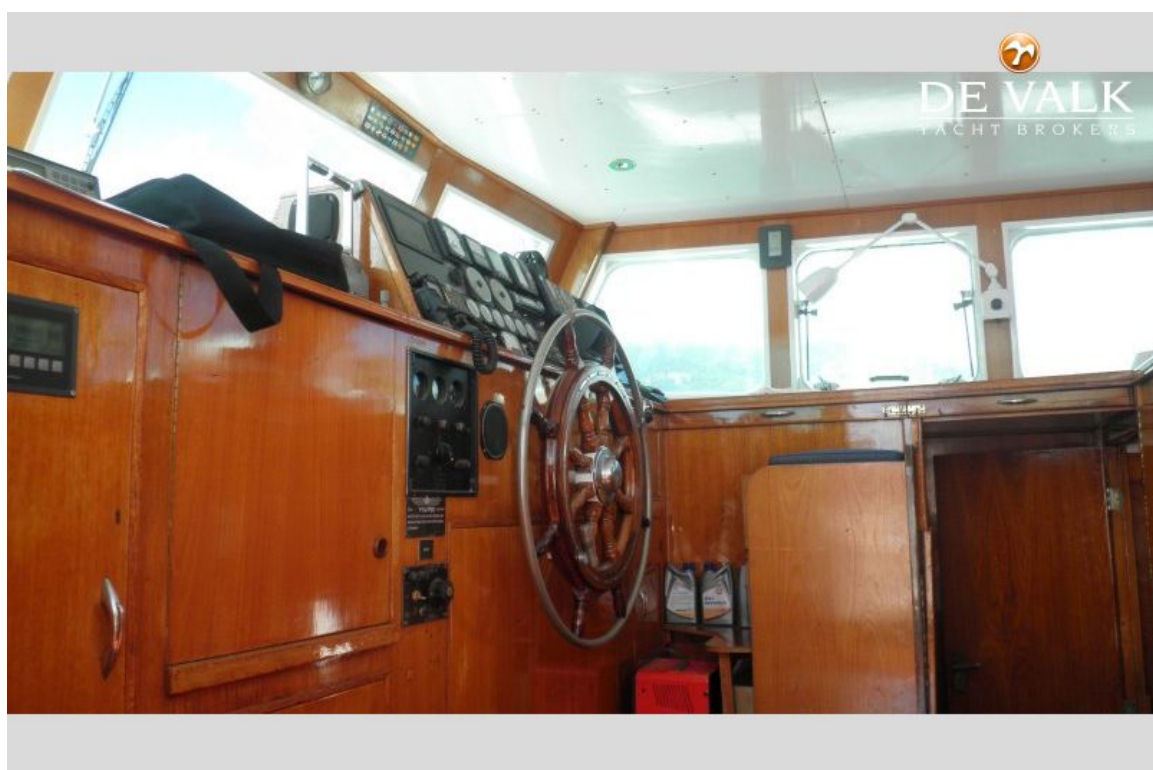
DUTCH STEEL MOTOR YACHT



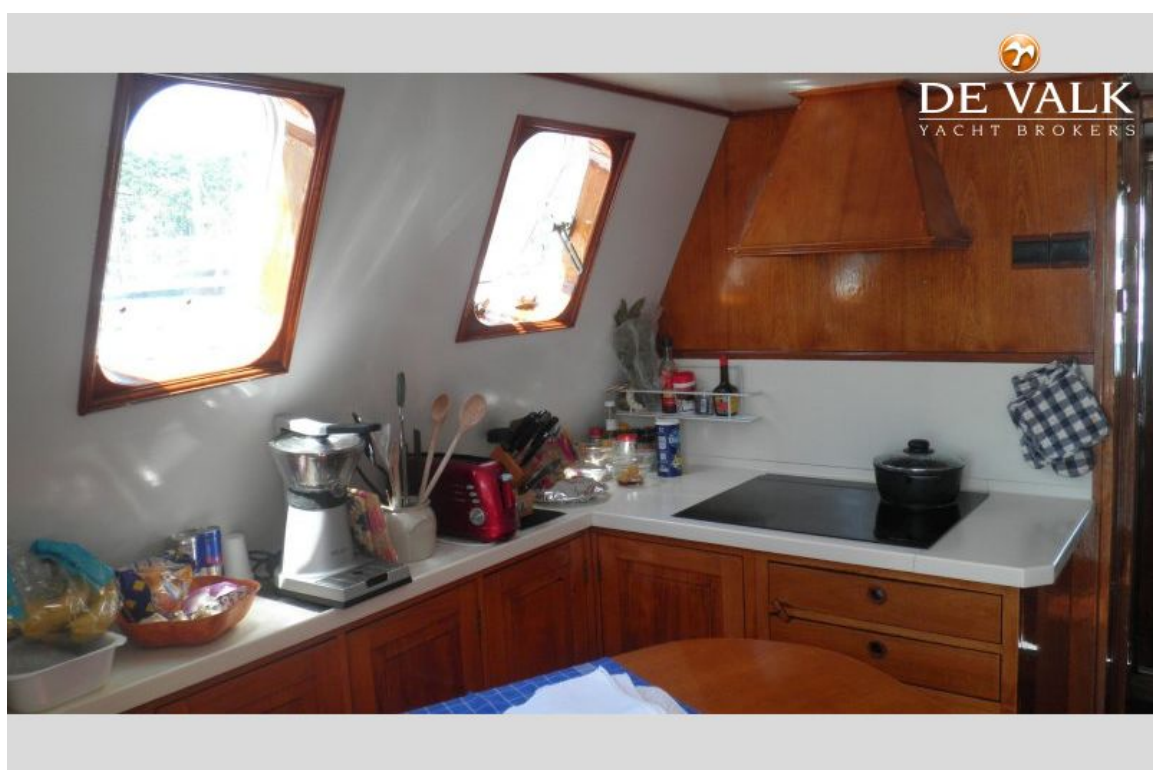
DUTCH STEEL MOTOR YACHT



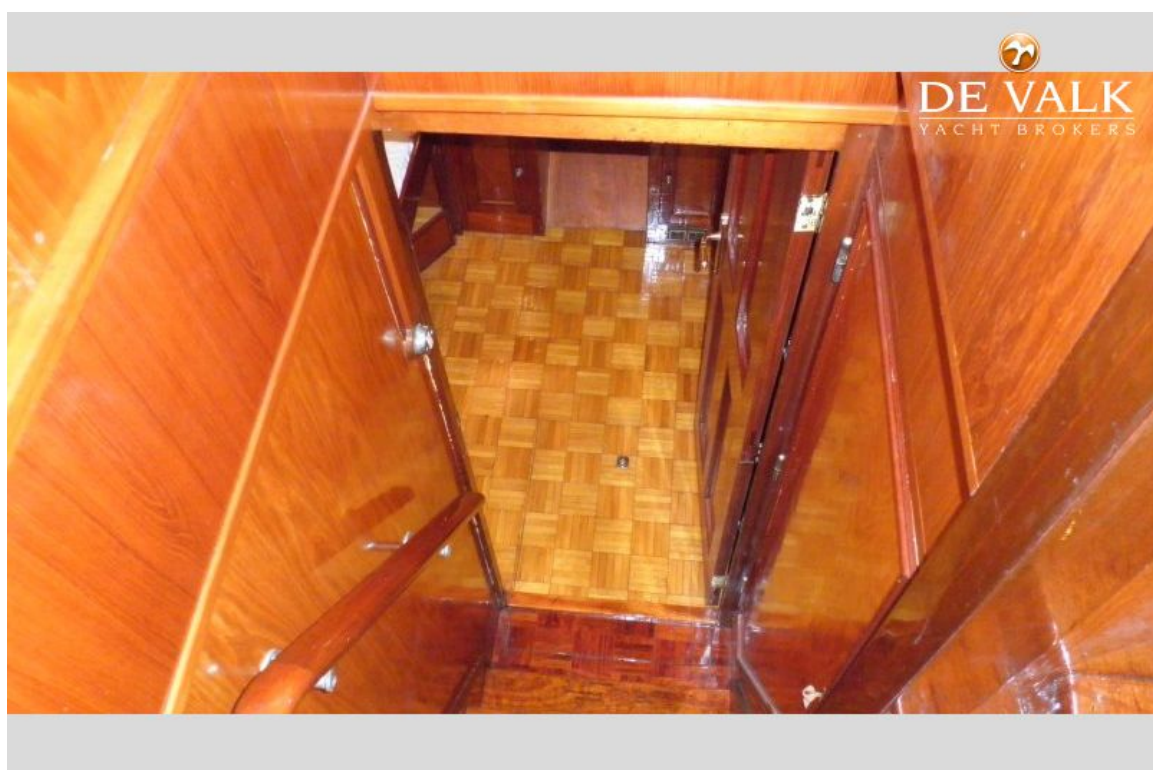
DUTCH STEEL MOTOR YACHT



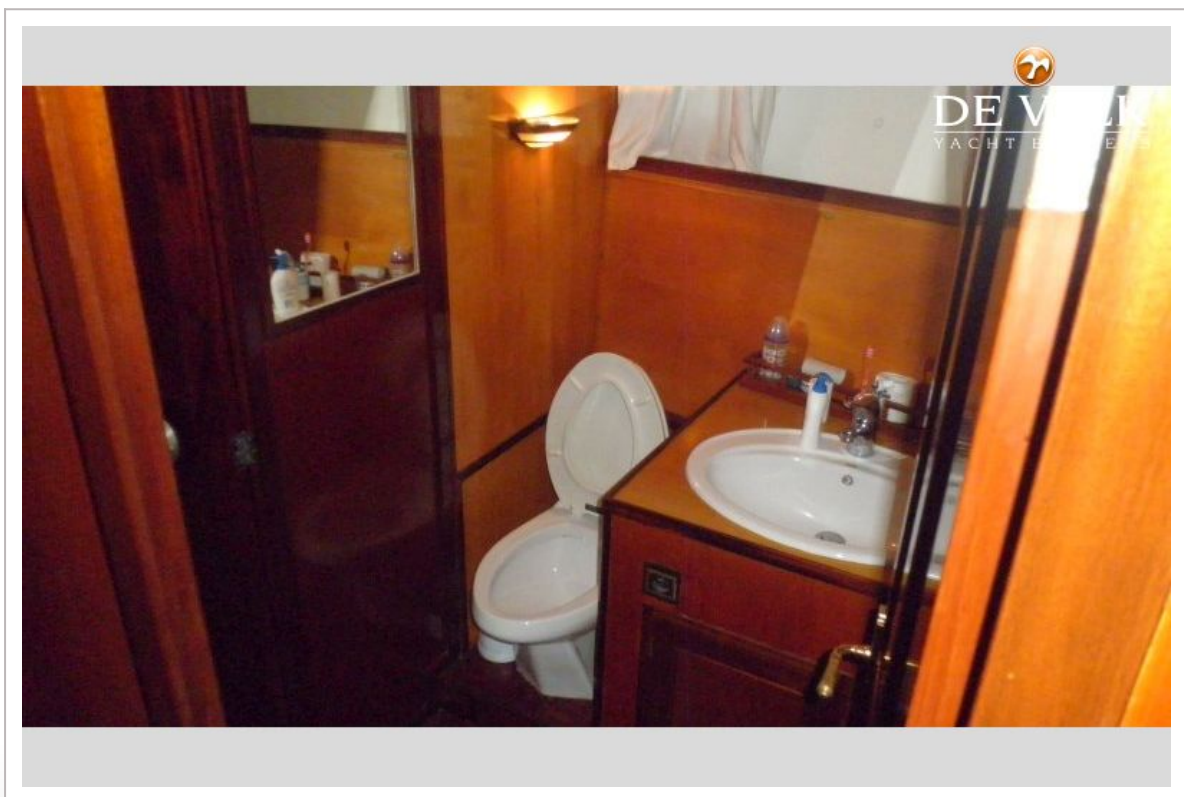
DUTCH STEEL MOTOR YACHT



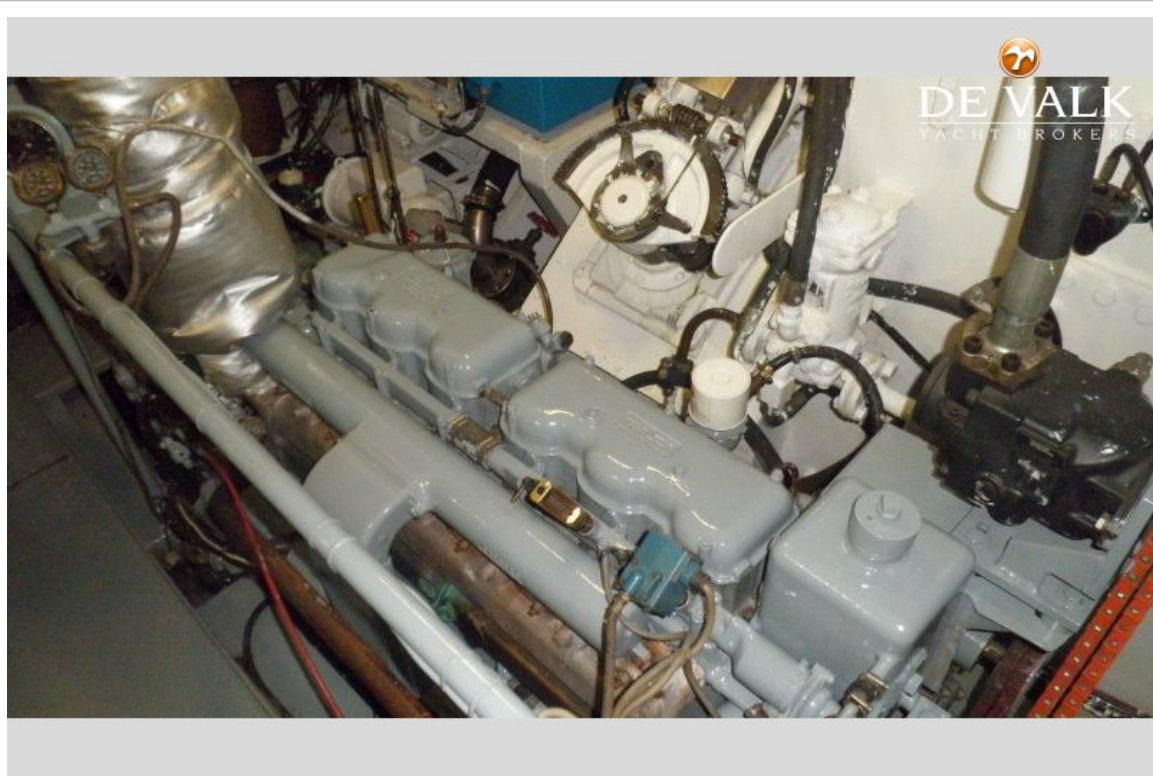
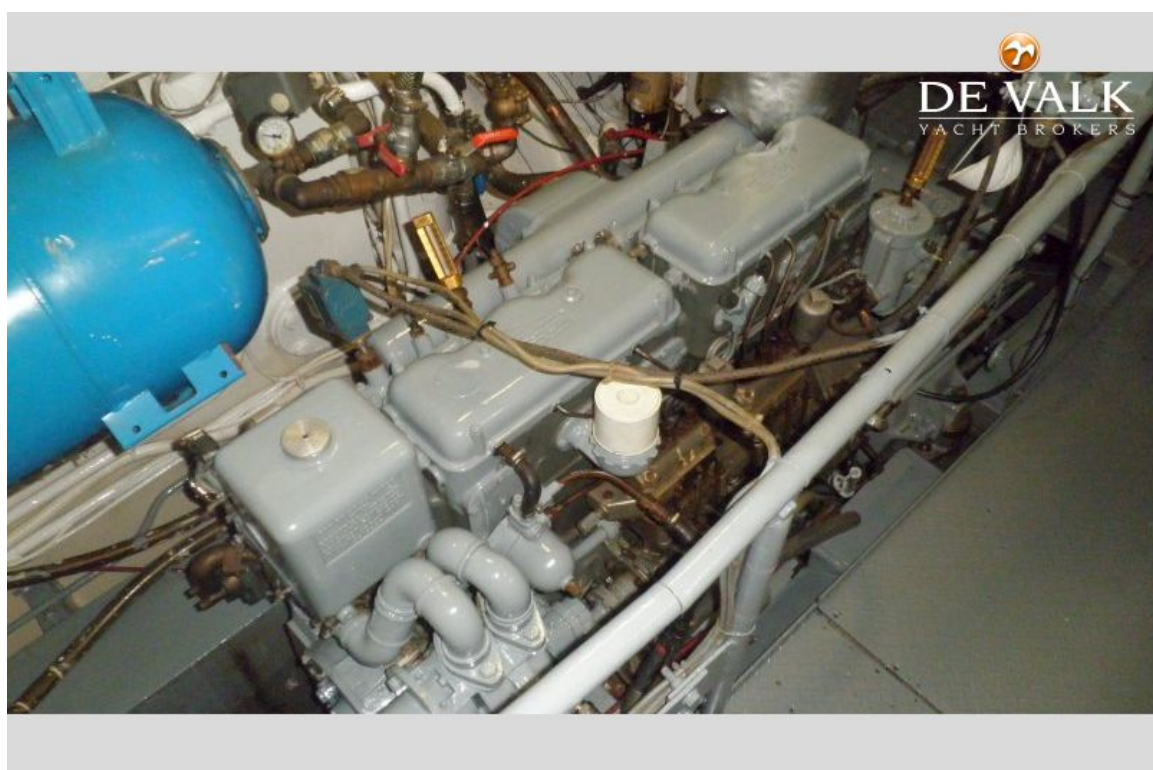
DUTCH STEEL MOTOR YACHT



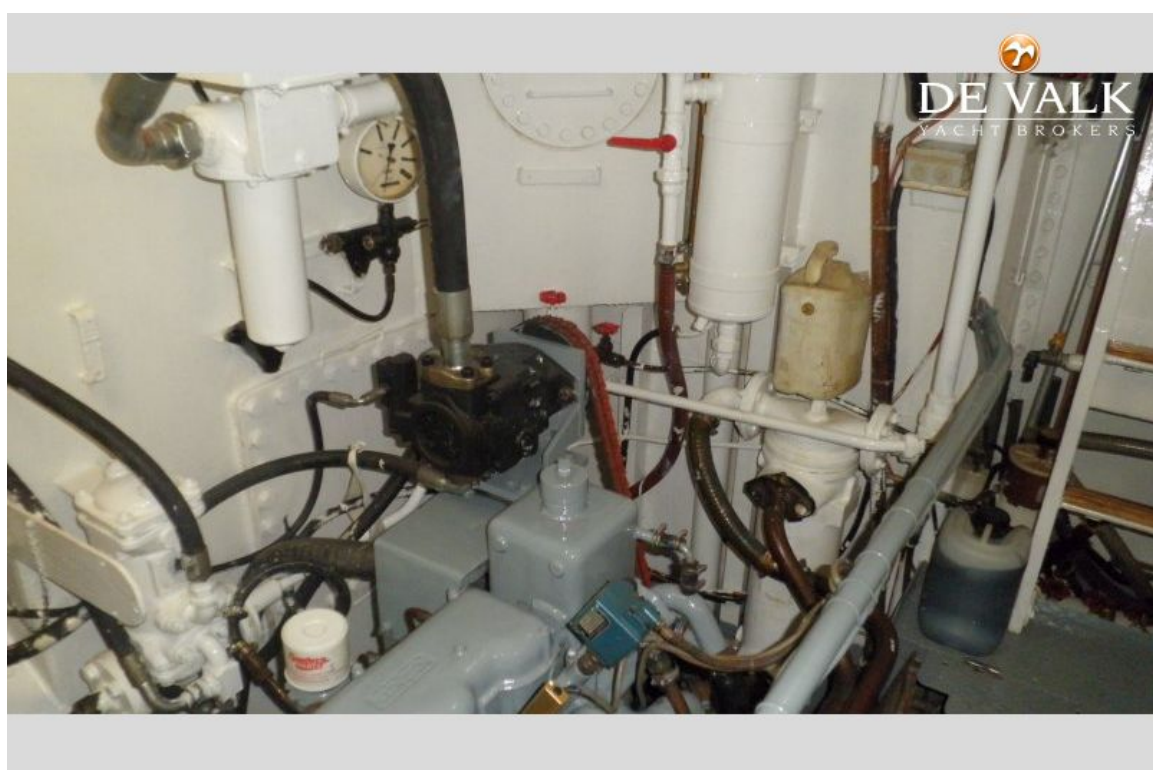
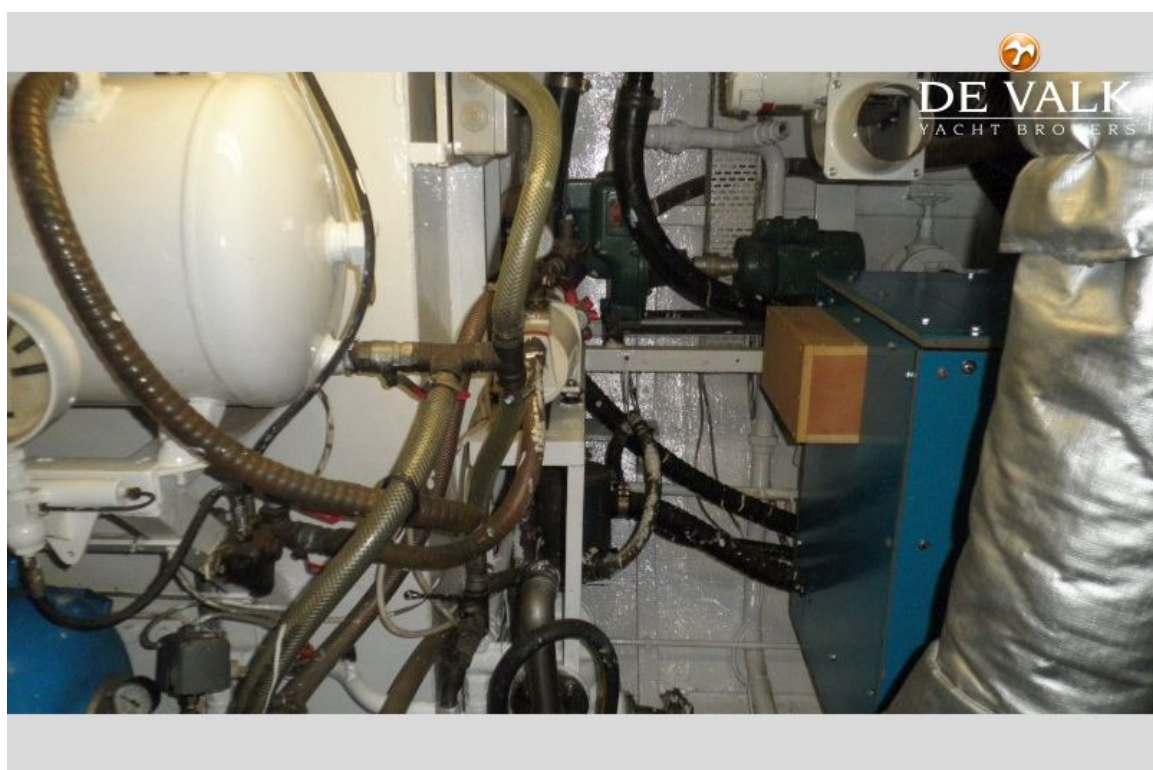
DUTCH STEEL MOTOR YACHT



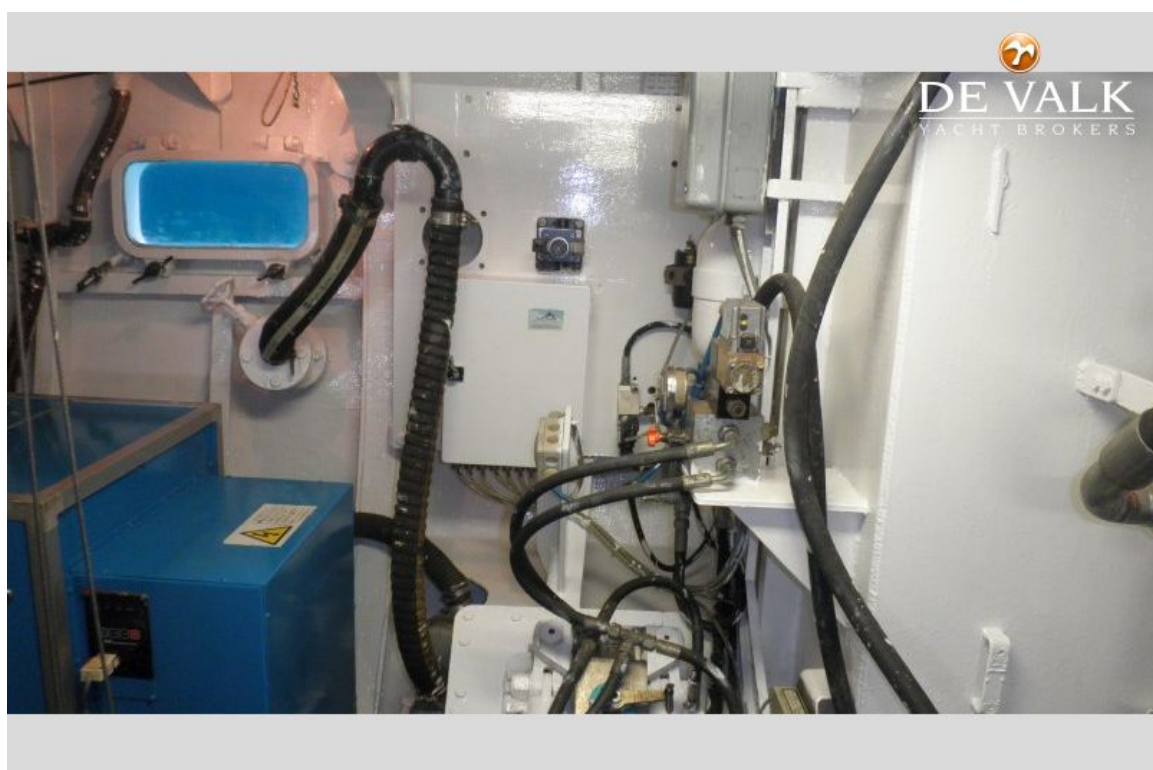
DUTCH STEEL MOTOR YACHT



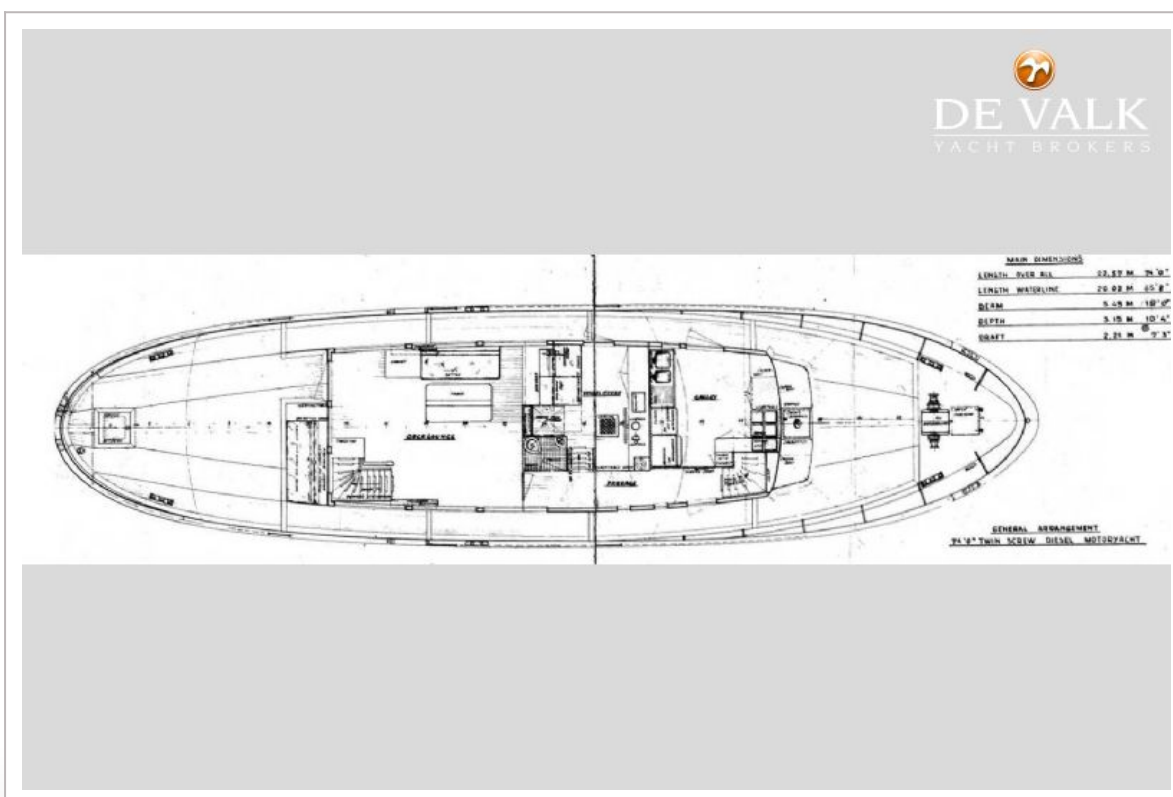
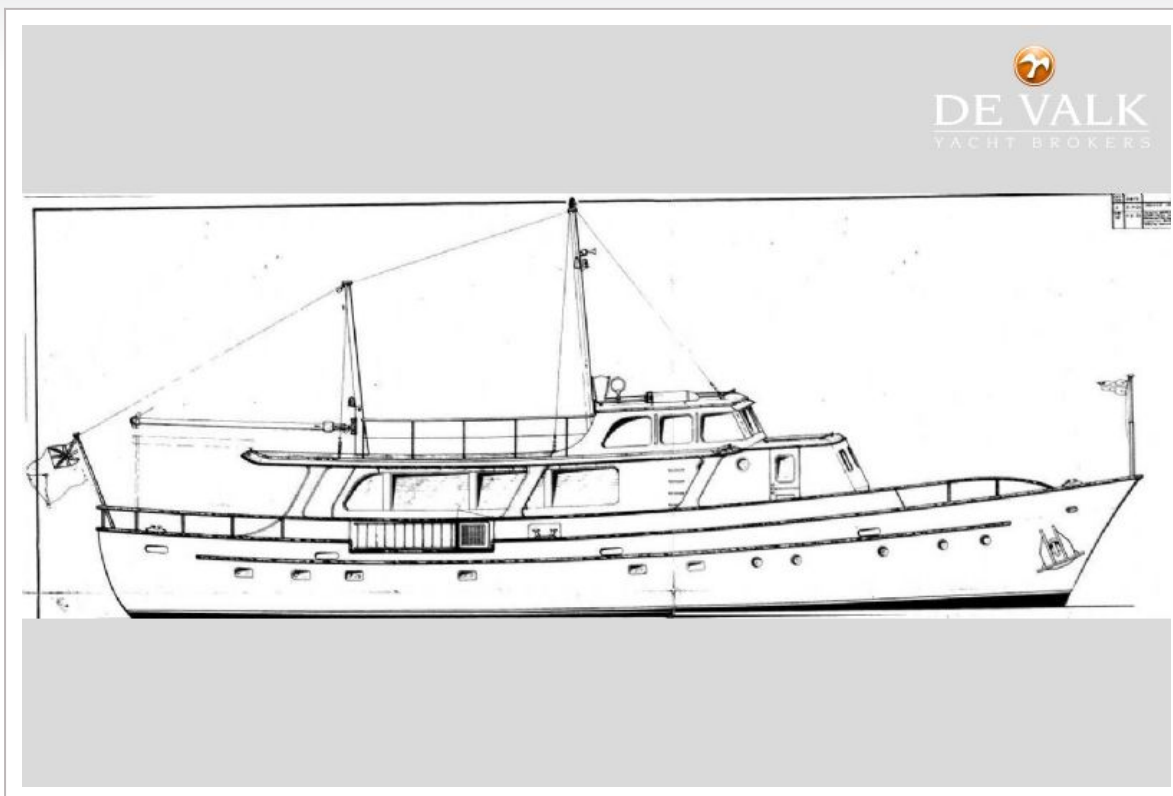
DUTCH STEEL MOTOR YACHT



DUTCH STEEL MOTOR YACHT



DUTCH STEEL MOTOR YACHT



DUTCH STEEL MOTOR YACHT

