



DE VALK  
YACHT BROKERS



BAVARIA 37



DE VALK  
YACHT BROKERS

BROKERAGE | CHARTER | BERTHS | FINANCE | INSURANCE | YACHT MANAGEMENT

## BROKER'S COMMENTS

A classic by Bavaria and built to Lloyds specifications. Fine wooden finishing inside, lots of light and ventilation throughout and a good family cruising yacht. In the twin cabin version you get a bigger aft cabin, a bigger lazarette and large galley for onboard cooking. So you have ample stowage space all over. With twin furling sails and bow thruster the easiest boat to handle. So an excellent starter-boat for who wants to start sailing. Welcome onboard this inviting and comfortable Bavaria 37 2-cabin version. You will appreciate her creature comforts.

*Marc Weijenberg*

## SPECIFICATIONS

<b>Dimensions</b>	11.28 x 3.65 x 1.45 (m)	<b>Builder</b>	Bavaria Yachtbau GmBh
<b>Built</b>	1996	<b>Cabins</b>	2
<b>Material</b>	GRP	<b>Berths</b>	6
<b>Engine(s)</b>	1 x Volvo Penta MD2030 diesel	<b>Hp/Kw</b>	29.00 (hp), 21.32 (kw)
<b>Asking price</b>	sold (VAT )	<b>Lying</b>	at sales office

## CONTACT

<b>Sales office</b>	De Valk Sint Annaland B.V.	<b>Telephone</b>	+31 (0)166 601 000
<b>Address</b>	Koelhuisweg 4 4697 RM Sint Annaland NL	<b>E-mail</b>	sintannaland@devalk.nl

## DISCLAIMER

These particulars are given in good faith as supplied but cannot be guaranteed.



## GENERAL

Model	BAVARIA 37
Type	sailing yacht
LOA (m)	11,28
LWL (m)	9,69
Beam (m)	3,65
Draft (m)	1,45
Air draft (m)	17,25
Headroom (m)	1,90
Year built	1996
Builder	Bavaria Yachtbau GmbH
Country	Germany
Designer	J&J Design
Displacement (t)	5,95
Ballast (tonnes)	lead 2,2
Hull material	GRP
Hull colour	white
Hull shape	round-bilged
Keel type	fin keel with bulb
Superstructure material	GRP
Rubbing strake	aluminum
Deck material	GRP
Deck finish	TBS non-skid profile mats
Superstructure deck finish	non-skid moulded in
Cockpit deck finish	teak
Dorades	1 x
Deckhatch	2 x
Portholes	aluminium
Fuel tank (litre)	stainless steel 150
Freshwater tank (litre)	polyethylene 300 (in 2 tanks)
Blackwater tank (litre)	None



Wheel steering	cable steering
Emergency tiller	yes
Extra info	Built to Germanische Lloyds specifications

## ACCOMMODATION

Cabins	2
Berths	6
Interior	mahogany
Floor	teak and holly
Saloon	yes
Headroom saloon (m)	1,90
Heating	diesel ducted hot air Webasto Airtop 32D
Aft Cabin	yes
Dinette	yes
Convertible berth	2 in salon
Galley	yes
Countertop	plastic
Sink	stainless steel 2 x
Cooker	calor gas Two burner
Oven	yes
Fridge	12v Frigoboat
Hot water system	220V + engine
Water pressure system	electrical
Owners cabin	double bed
Bed length (m)	2,00 x 1,80
Wardrobe	hanging/drawers/shelves
Bathroom	en suite I
Toilet	en suite
Toilet system	manual
Wash basin	in the bathroom
Shower	en suite



Guest cabin 1	double bed
Bed length (m)	2,00 x 1,60
Wardrobe	hanging and shelves

## MACHINERY

No of engines	1
Make	Volvo Penta
Type	MD2030
HP	29
kW	21,32
Fuel	diesel
Year installed	1996
Maximum speed (kn)	7,5
Cruising speed (kn)	6,5
Consumption (l/hr)	3
Engine cooling system	freshwater heat exchanger
Drive	sail-drive
Saildrive seal	(2012)
Engine controls	bowden cable
Gearbox	mechanical Volvo Penta
Bowthruster	electric Sidepower (3kW)
Exhaust	watercooled
Propeller type	fixed
Propeller blades	2
Manual bilge pump	1 x
Electrical installation	12/220v
Start battery	1 x
Service battery	1 x (needs replacement)
Battery charger	12v/20amp
Solar panel	Solara 225watt
Shorepower	with cable



## Extra info

(engine hour and RPM indicator defect)

## NAVIGATION

Compass

Suunto

Depth sounder

Autohelm ST50

Log

Autohelm ST50

Windset

Raymarine I60 (2020)

Repeater

Autohelm ST50

VHF

Shipmate RS8300

Autopilot

Autohelm ST6000 (defect)

Plotter

Raymarine Element 9S (2020)

Navigation lights

yes

## EQUIPMENT

Sprayhood

(2018)

Cockpit cover

yes

Bimini

(2013)

Cockpit cushions

yes

Cockpit table

yes

Bathing platform

yes

Boarding ladder

stainless steel

Deck shower

yes

Anchor

CQR Plough

Anchor chain

(chain-line)

Outboard support

yes

Sea railing

wire

Grab rail (superstructure)

stainless steel

Pushpit

yes

Pulpit

yes

Lifebuoy

1 x

Fenders

yes



Mooring lines	yes
Radio-cd player	yes
Speakers in salon	yes
Clock - barometer	yes

## RIGGING

Rigging	sloop
Standing rigging	wire
Brand mast	Seldén
Material mast	aluminium
Spreaders	2 x set
Mainsail	Elvstrom Sails (1996)
Stoway mast	yes
Genoa	Van de Werf Sails (2010)
Genoa furler	Furlex
Genoa cover	(2018)
Reefing System	main in-mast furling
Backstay adjuster	tackle
Boomvang	mechanical Selden Rodkicker
Genoa sheetwinches	2 x Harken ST44
Halyard winches	2 x Harken ST40







# BAVARIA 37



# BAVARIA 37

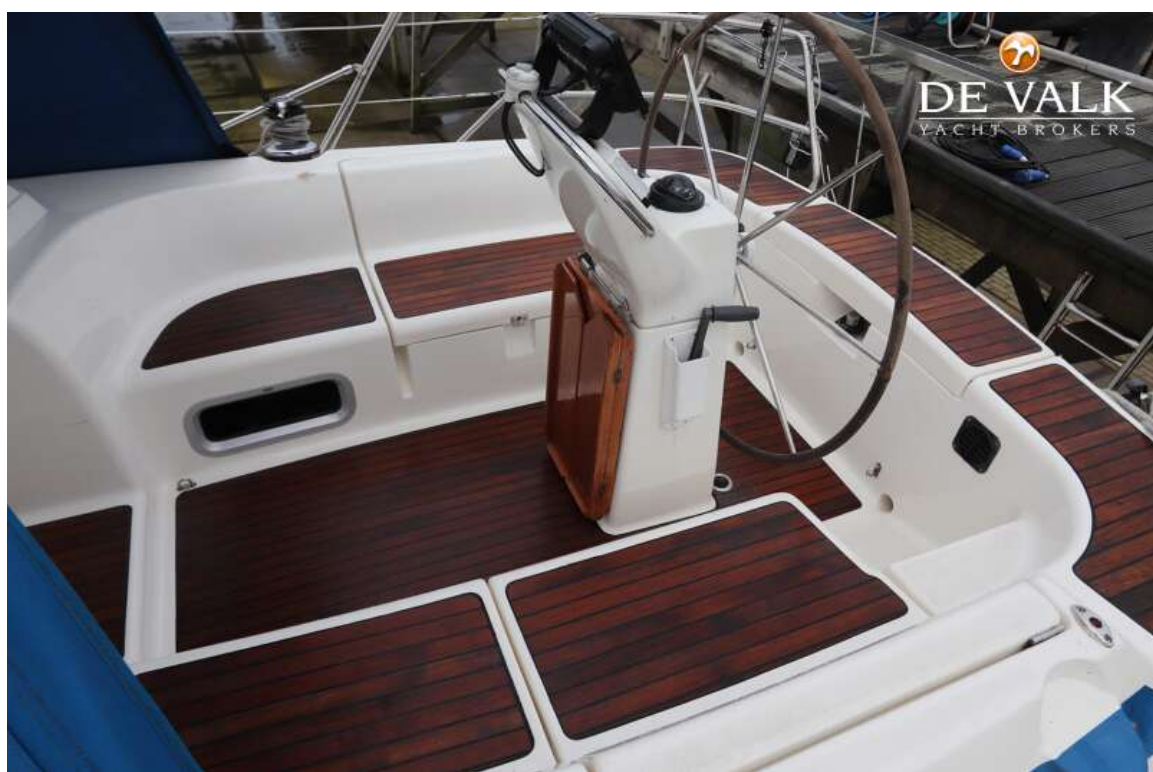




# BAVARIA 37



## BAVARIA 37

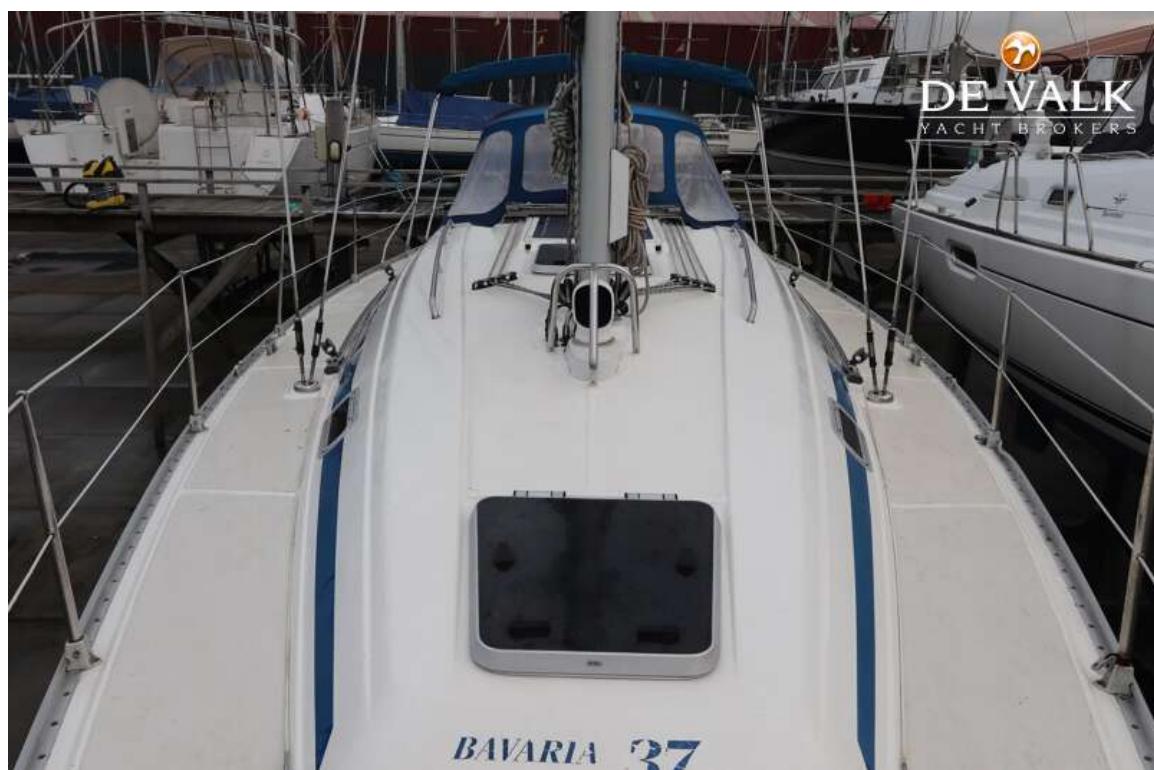




# BAVARIA 37



## BAVARIA 37





## BAVARIA 37







## BAVARIA 37



## BAVARIA 37





## BAVARIA 37

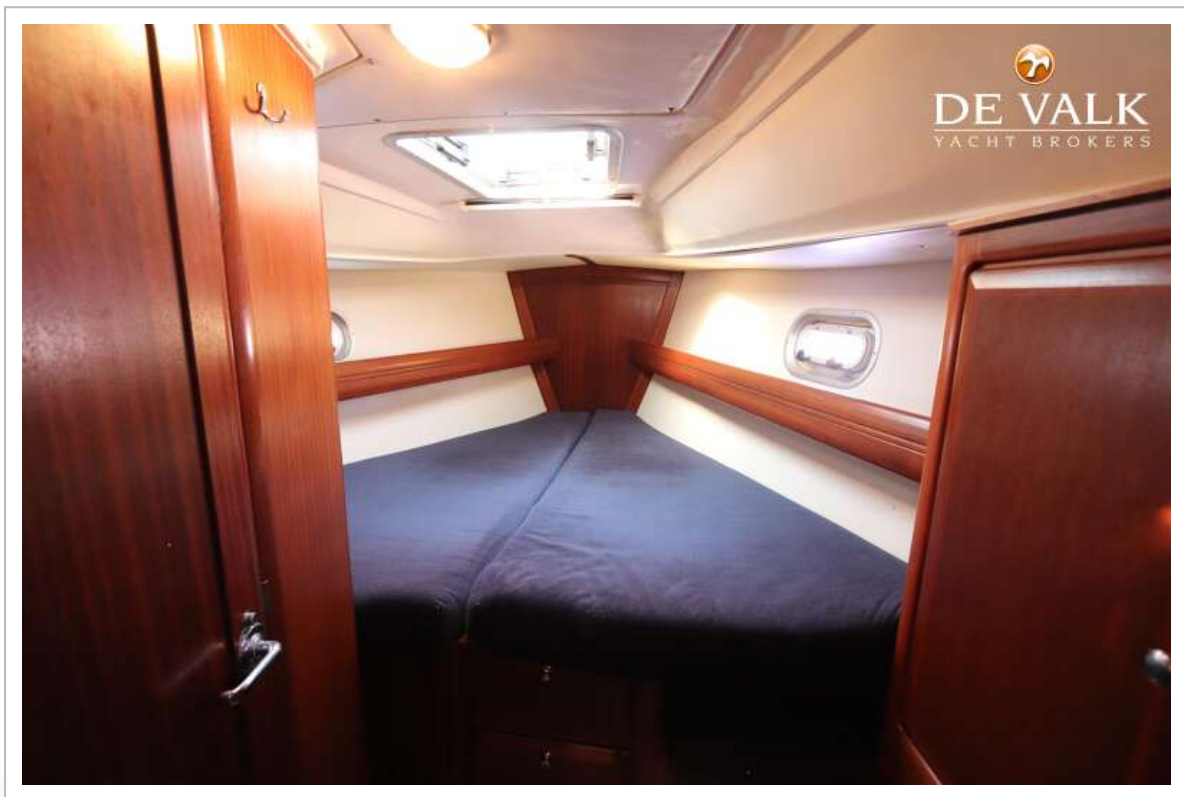


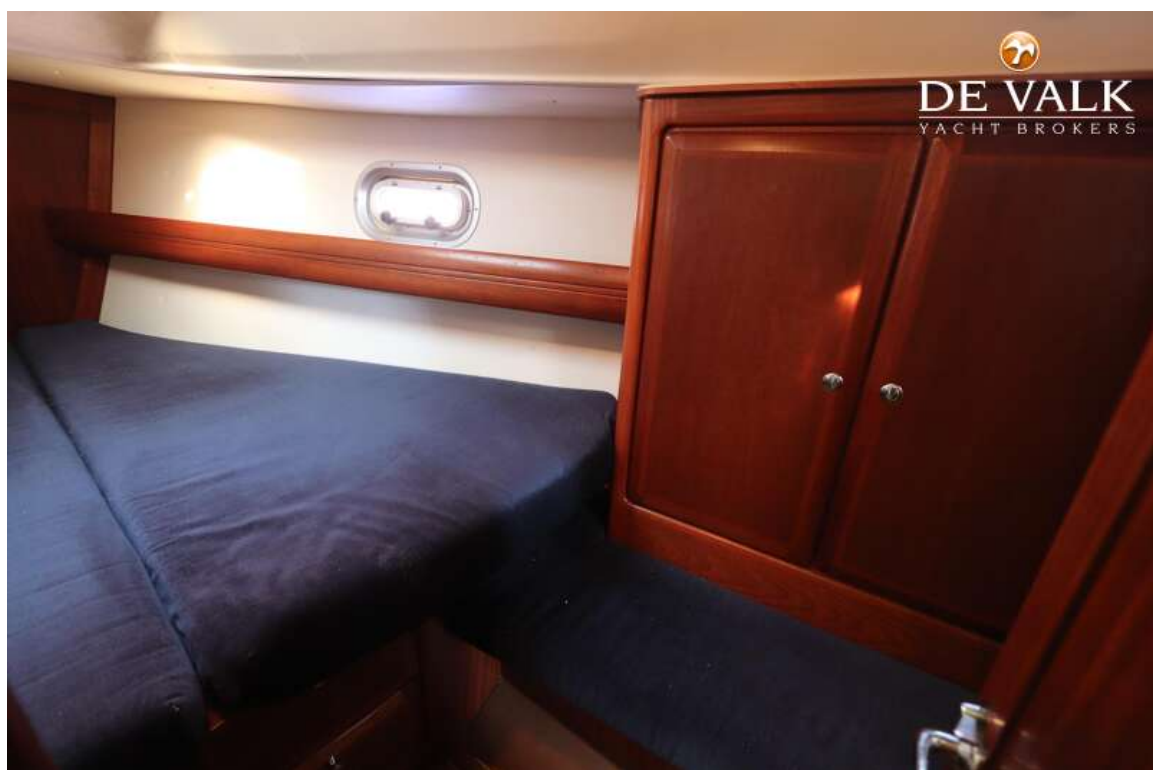
## BAVARIA 37



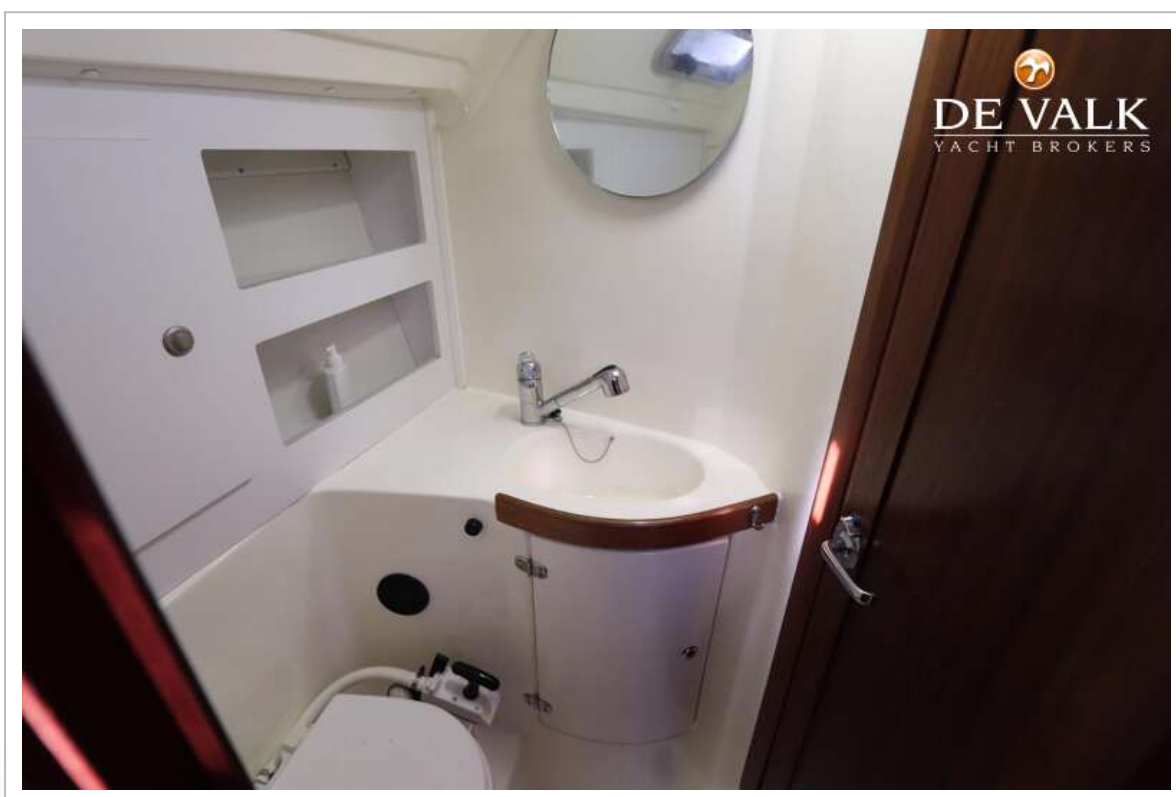


## BAVARIA 37





## BAVARIA 37

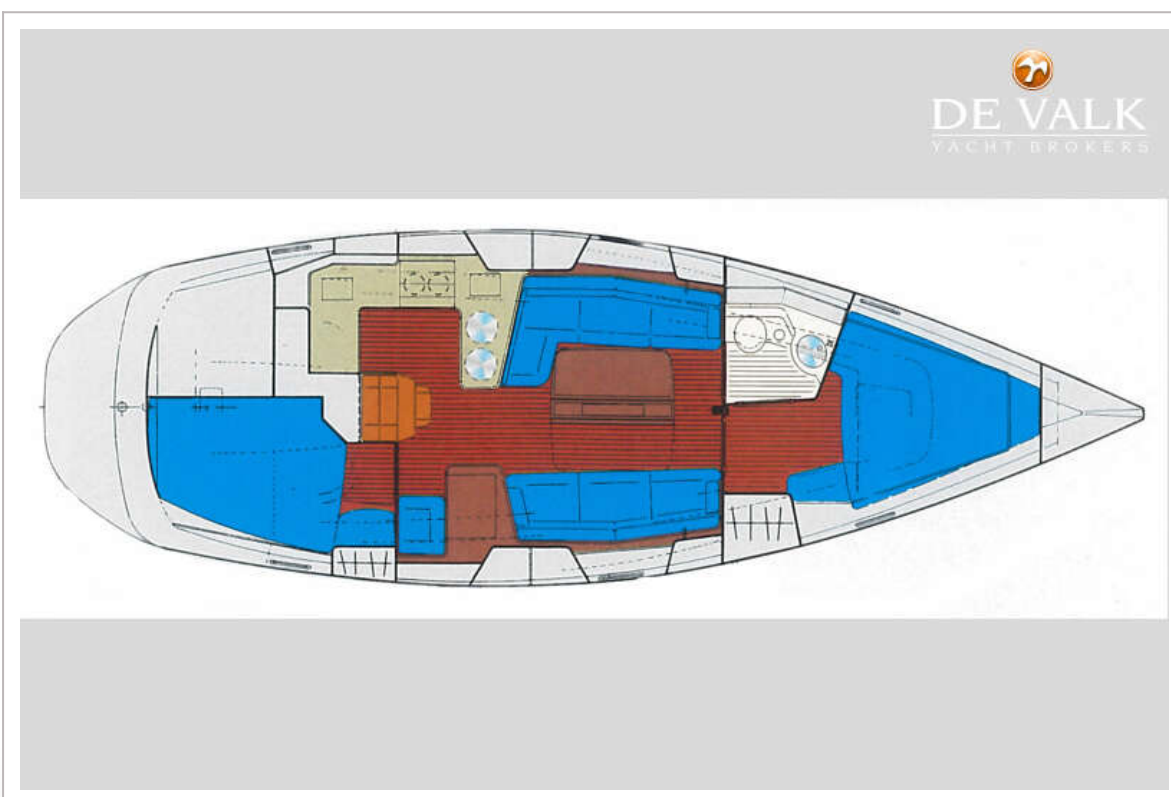
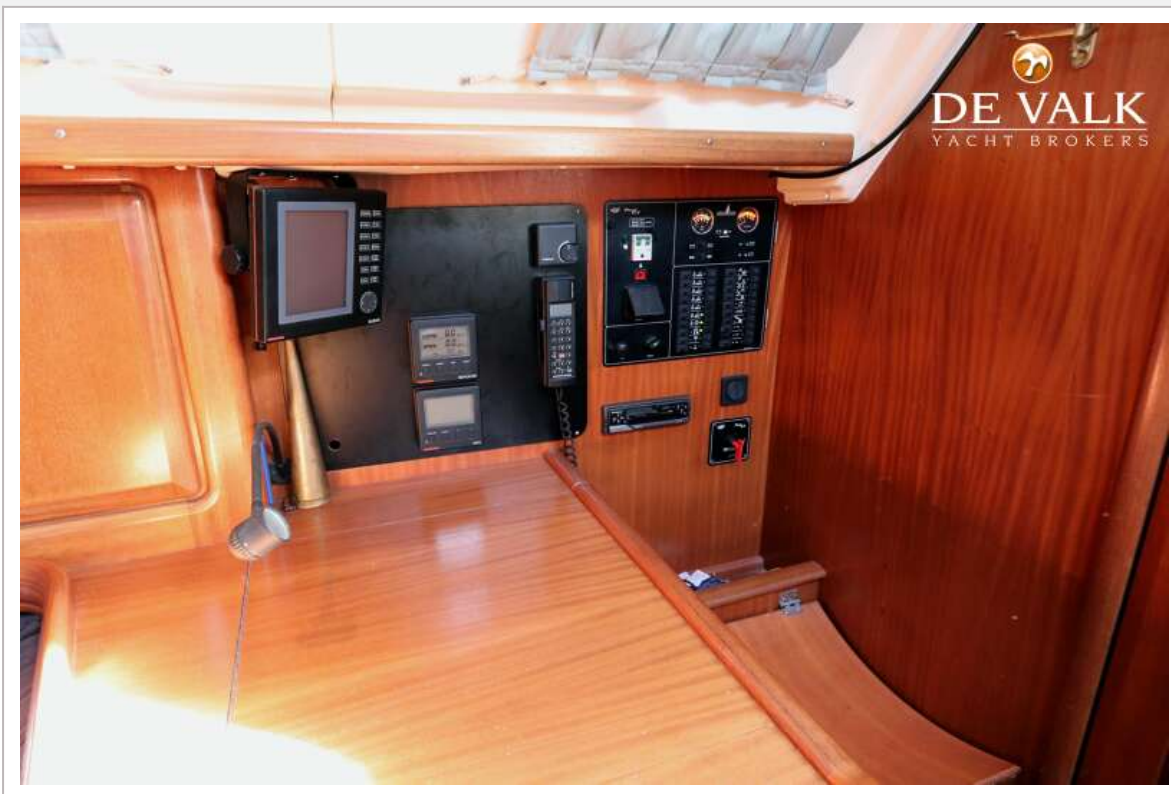








# BAVARIA 37



# BAVARIA 37

