



BESTEWIND 50



DE VALK
YACHT BROKERS

BESTEWIND 50

BROKER'S COMMENTS

The Bestewind 50 design brief was Safety, Comfort and Speed. The bestewind 50 was designed as sturdy no-nonsense, stable, short handed sailor without the need to leave the cockpit at sea while sailing. Her pilothouse provides a comfortable social area for enjoyment in port and at sea even in bad weather. The straight bow gives a maximum waterline by hull length combined with her high sail area guarantees high day averages.

Hans Visser

SPECIFICATIONS

Dimensions	14.96 x 4.40 x 2.15 (m)	Builder	K&M Yachtbuilders
Built	2012	Cabins	3
Material	GRP	Berths	8
Engine(s)	1 x Yanmar 4JH4-TE diesel	Hp/Kw	75.00 (hp), 55.20 (kw)
Asking price	sold (VAT)	Lying	at sales office

CONTACT

Sales office	De Valk Hindeloopen B.V.	Telephone	+31 514 52 40 00
Address	Oosterstrand 1 8713 JS Hindeloopen NL	E-mail	hindeloopen@devalk.nl

DISCLAIMER

These particulars are given in good faith as supplied but cannot be guaranteed.



GENERAL

Model	BESTEWIND 50
Type	sailing yacht
LOA (m)	14,96
LWL (m)	13,72
Beam (m)	4,40
Draft (m)	2,15
Air draft (m)	22,06
Headroom (m)	2,05
Year built	2012
Launched	June 2012
Builder	K&M Yachtbuilders
Country	The Netherlands
Designer	Dykstra Naval Architects
Displacement (t)	18
Ballast (tonnes)	5,5 in steel keel
CE norm	A
Hull material	GRP
Hull colour	Sky Blue
Hull shape	round-bilged
Keel type	fin keel with bulb
Superstructure material	GRP
Rubbing strake	Esthec with stainless steel strip
Deck material	GRP
Deck finish	synthetic teak Esthec - teak colour with black grout
Superstructure deck finish	non-skid paint
Cockpit deck finish	synthetic teak Esthec - teak colour with black grout
Antifouling (year)	2022
Dorades	4x Stainless steel including protective bars
Window frame	Glued
Window material	tempered glass 2 layers - Lewmar



Deckhatch	9x Lewmar
Portholes	aluminium 2x Lewmar
Fuel tank (litre)	polyethylene Total 650 in 3 tanks
Level indicator (fuel tank)	On each tank individual
Fuel daytank (litre)	polyethylene 60 auto fill
Freshwater tank (litre)	polyethylene Total 600 in 3 tanks
Level indicator (freshwater)	1x
Blackwater tank (litre)	polyethylene 2x 60
Blackwater tank extraction	deck extraction + uw line
Wheel steering	rack & pinion Mamba drive Lewmar
Emergency tiller	yes
More info on hull	Hull vacuum injection
More info on paintwork	2021 hull re-sprayed in Awgrip
Extra info	Integrated steel galvanised frame for the keel laminated in

ACCOMMODATION

Cabins	3
Berths	8
Interior	mahogany With white (9010) panel work
Layout	Privat
Floor	parquet Oak floorboards
Open cockpit	yes
Pilot house	With twin sofas (for 4 persons) and navigation area
Saloon	yes
Headroom saloon (m)	Approx. 1,95 mtr.
Heating	diesel ducted hot air Webasto Airtop 5kW with vents in every cabin
Navigation center	In pilothouse
Chart table	In pilothouse
Convertible berth	2x
Sliding door to cockpit	Lower-in floor style door



Galley	U shaped
Countertop	corian White
Sink	stainless steel Double
Cooker	calor gas Force10 3 burner
Oven	In cooker
Gas alarm	yes
Fridge	Isotherm 130 ltr. with freezer compartment separate compressor
Freezer	Isotherm 40 ltr. separate compressor
Hot water system	220V + engine
Water pressure system	electrical
Owners cabin	double bed Forward cabin
Bed length (m)	2,05 x 2,10 (bigger than standard) with covers
Wardrobe	hanging/drawers/shelves
Bathroom	en suite
Toilet	en suite Rheinstrom
Toilet system	manual
Wash basin	in the bathroom
Shower	en suite Separated with glass door
Guest cabin 1	double bed
Bed length (m)	2,03 x 1,30 mtr.
Wardrobe	hanging and shelves
Bathroom	separate
Toilet	separate
Toilet system	manual Rheinstrom
Wash basin	in the bathroom
Shower	shared
Guest cabin 2	double bed
Bed length (m)	2,03 x 1,30 mtr.
Wardrobe	hanging and shelves
Bathroom	shared
Toilet	shared Rheinstrom
Toilet system	manual



Wash basin	in the bathroom
Shower	shared
Extra info	Locker space is created throughout wherever there was space

MACHINERY

No of engines	1
Make	Yanmar
Type	4JH4-TE
HP	75
kW	55.20
Fuel	diesel
Year installed	2012
Maximum speed (kn)	8,2
Cruising speed (kn)	7,5
Consumption (l/hr)	3
Engine hours	1146
Engine cooling system	freshwater heat exchanger
Drive	shaft
Shaft seal	yes
Engine controls	bowden cable
Gearbox	mechanical
Bowthruster	electric Lewmar 185 TT 6.0Kw 12V
Exhaust	watercooled
Thrust bearing	Aquadrive
Propeller type	folding Gori 20" x 17"
Propeller blades	3
Propeller shaft material	stainless steel
Shaft lubrication	water
Manual bilge pump	2x in cockpit and anchor locker
Electric bilge pump	3x engineroom, salon, aftship
Bilge alarm	yes



Electrical installation	12 V DC and 220 V 50 Hz AC
Batteries	yes
Start battery	1x 120 Ah
Service battery	4x 220 Ah
Battery charger/inverter	Mastervolt Mass Combi Pro 12 / 3000 - 150 new 2021
Diode battery combiners	yes
Shorepower	with cable 20 mtr.
Insulation transformer	yes

NAVIGATION

Compass	Lewmar Olympic 135
Electric compass	B&G in autopilot
Depth sounder	Data from: 2x B&G H3000
Log	2x B&G H3000
Windset	B&G H3000 incl AWA en TWA
Repeater	B & G H3000
VHF	Simrad RS82
VHF handheld	Simrad HT 50
Autopilot	B&G ACP2 integrated in Mamba steerbox
Rudder angle indicator	B & G H3000
Radar	Simrad
GPS	Simrad
Plotter	Simrad
Radar/GPS/plotter	Simrad NSE12
Electronic chart(s)	yes
AIS transceiver	Simrad
Navigation lights	LED

EQUIPMENT

Bimini	yes
Sun awning	yes



Cockpit cushions	2x
Cockpit table	Custom removable aluboot with drawers
Bathing platform	Folding stern as platform
Boarding ladder	stainless steel
Transom door	See bathing platform
Deck shower	yes
Anchor	Delta 32 Kg
Anchor chain	80 mtr. 10 mm
Anchor 2	Fortress X37 in anchorlocker
Anchor chain	60 mtr. Nylon line no chain
Windlass	electrical Lewmar V4 12 V
Capstan	Integrated in windlass
Deck wash	Fordeck
Dinghy	inflatable Plastimo 2.8 mtr.
Outboard	Yanmar 2.5 pk
Outboard support	Laminated in anchorlocker
Sea railing	wire Stainless steel 1 x 19
Grab rail (superstructure)	stainless steel
Railing side opening gates	Both sides
Pushpit	Including rear entrance gate
Pulpit	Including navigation lights
Horn	air pressure
Binocular	yes
Fenders	yes
Mooring lines	yes
Spare parts	yes
Tools	yes
TV	On lift
TV receiver	DVB-T
Radio-cd player	yes
Cockpit speakers	yes
Speakers in salon	And in pilothouse / outside



Fire extinguisher

3x

Extra info

Art, clock and barometer are not being sold

RIGGING

Rigging

sloop

Standing rigging

Rod Navtec discontinues with Tipcups

Brand mast

Hallspars Custom

Material mast

carbon High Modulous

Spreaders

3 pair

Keel stepped mast

yes

Mainsail cover

De Vries

Battcars

Ronstan ballbear

Fully battened mainsail

Doyle sails Hydranet

High aspect

Blade Doyle Hydranet

Genoa I

Doyle hydranet

Genoa furler

Reckmann 12V electric

Cutter furler

Reckmann 12V electric for blade

Gennaker

Doyle Nylon on Bamar endless line manual furler

Reefing System

quick-one-line-reefing Operated from the cockpit

Backstay adjuster

hydraulic 2x Navtec stainless steel

Boomvang

hydraulic Navtc stainless steel

Primary sheet winch

2x Lewmar 65 stainless steel Electric

Genoa sheetwinches

2x Lewmar 58 stainless steel Electric

Gennaker pole

Removable

Extra info

Central navtec hydraulic pump system with extra switch at mast



BESTE WIND 50



BESTE WIND 50



BESTE WIND 50



BESTE WIND 50

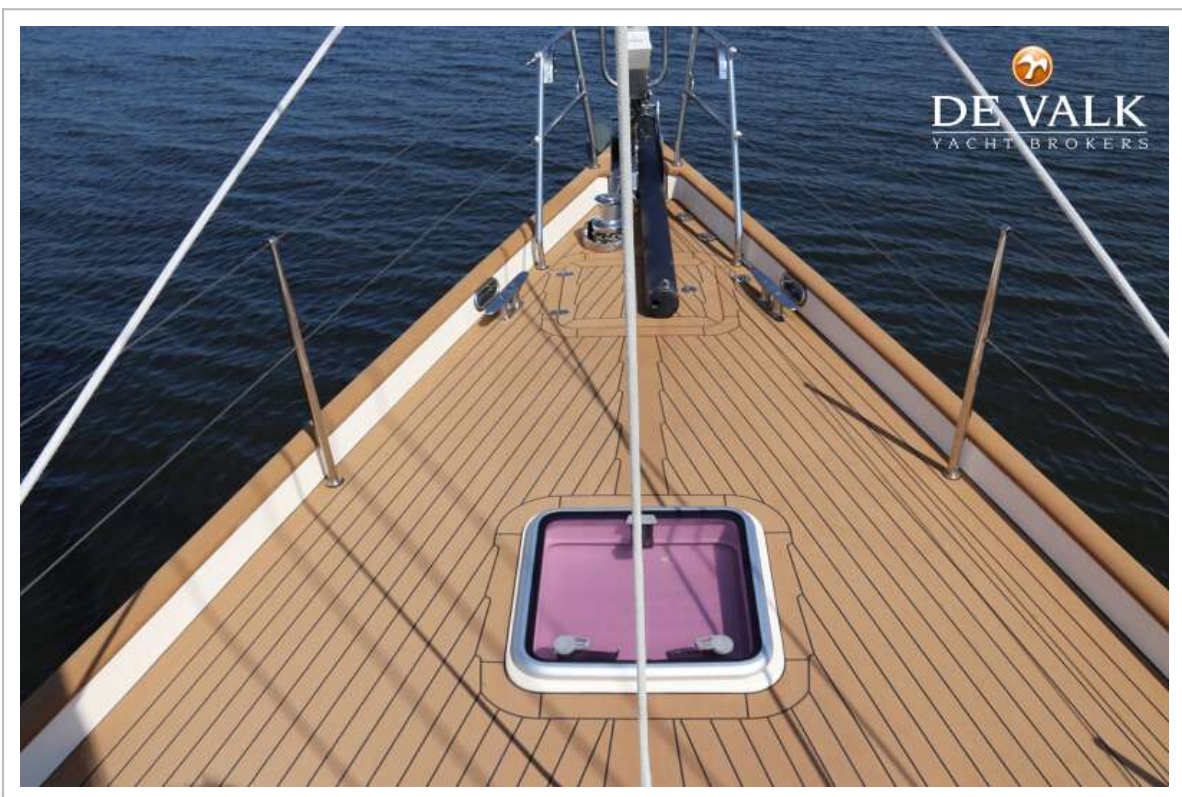




BESTE WIND 50



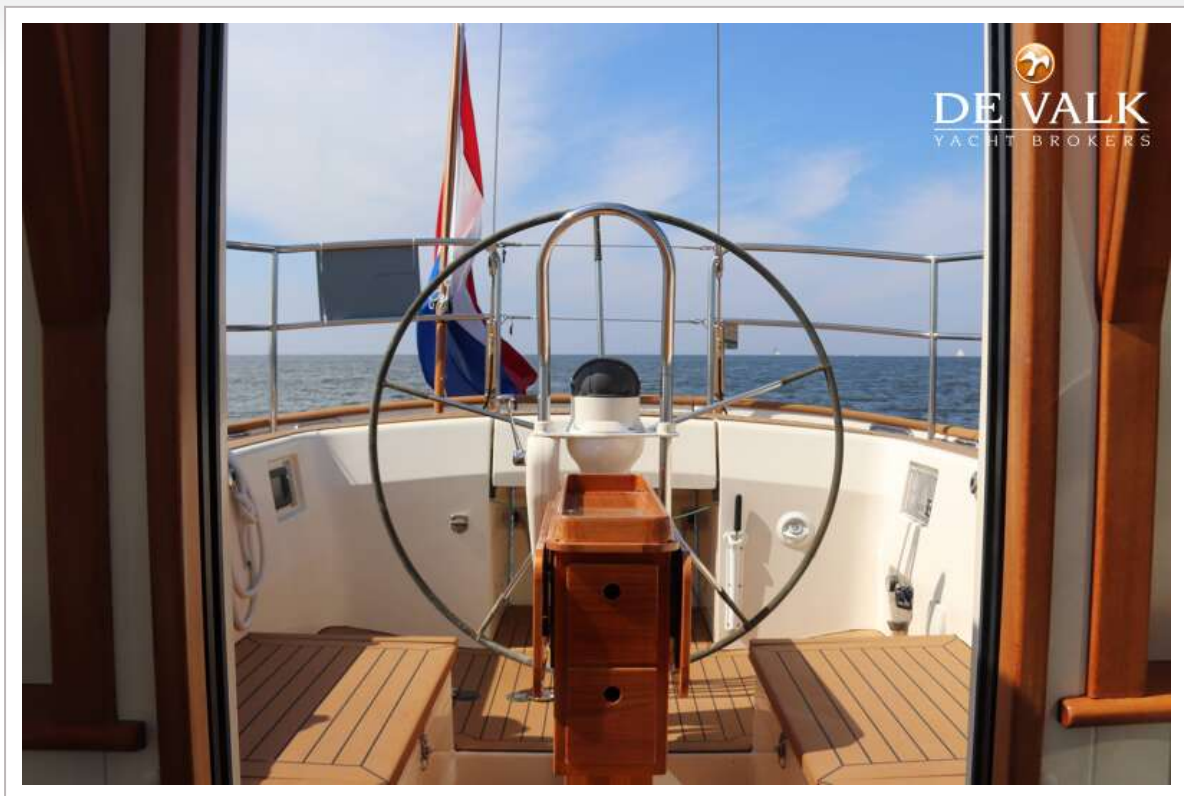
BESTE WIND 50



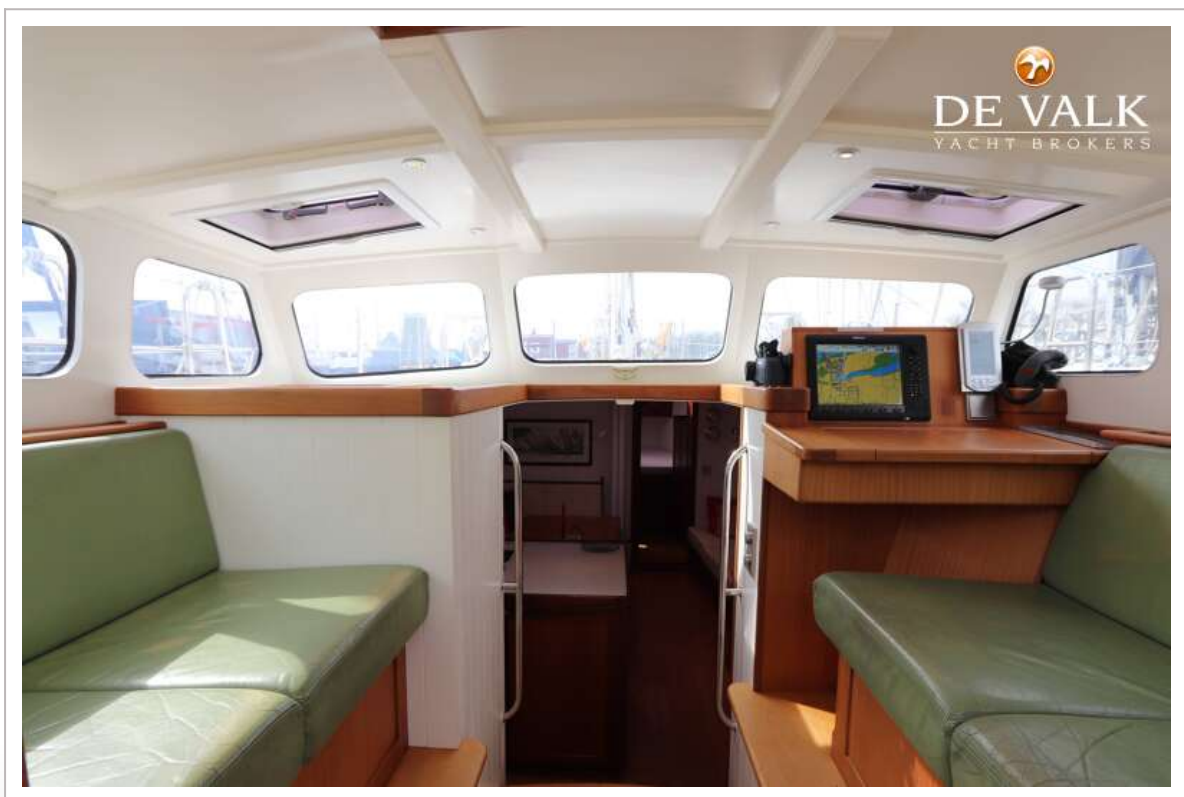
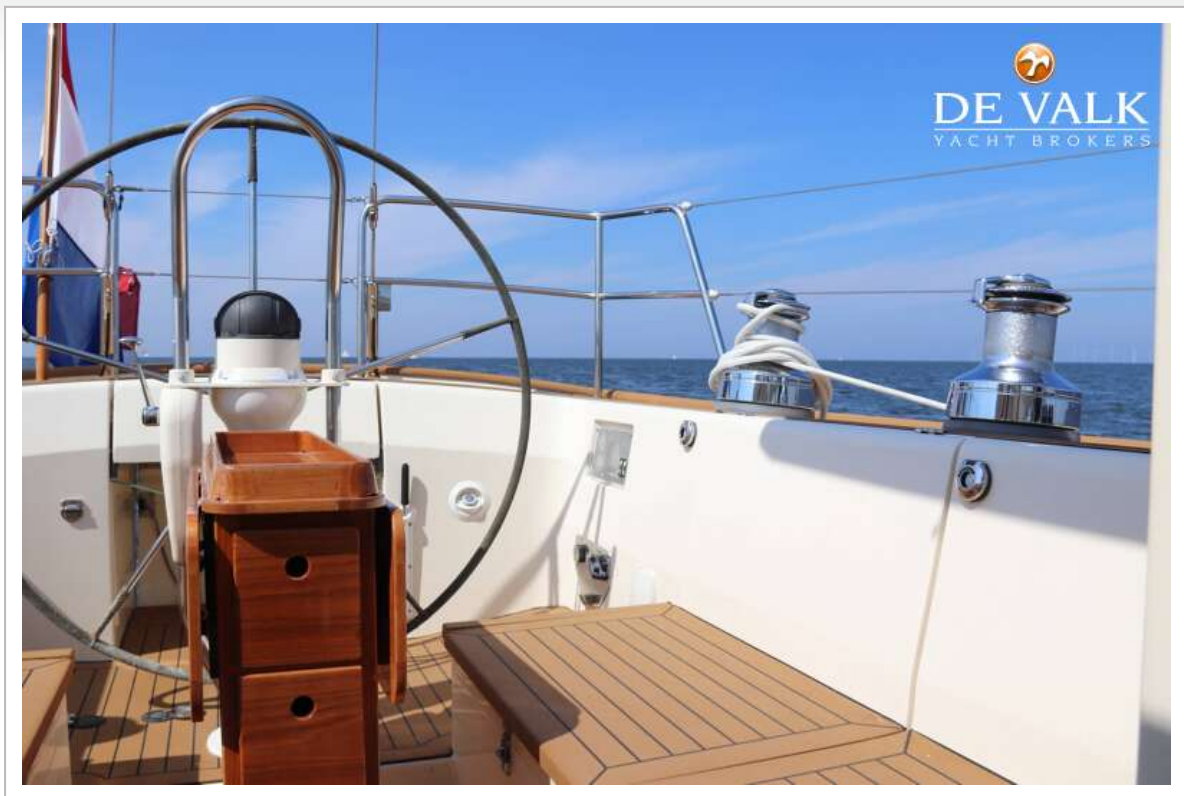
BESTE WIND 50



BESTE WIND 50

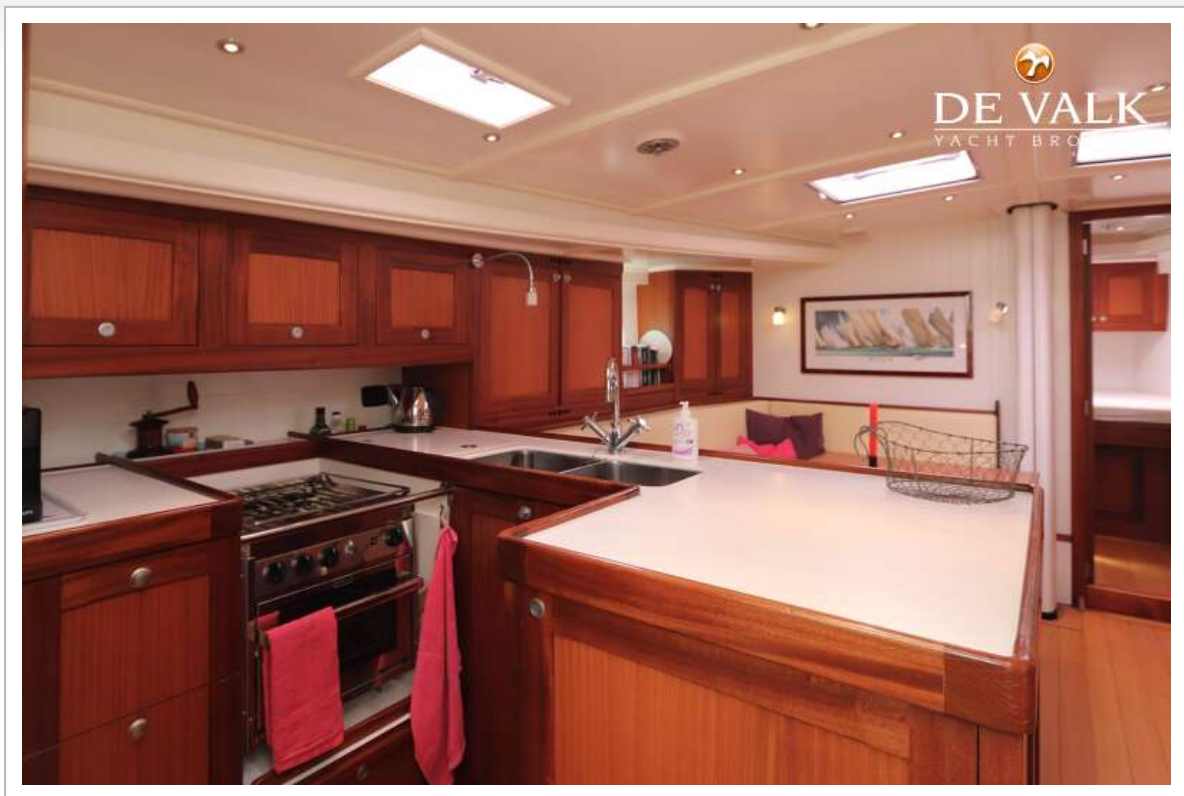


BESTE WIND 50



BESTE WIND 50

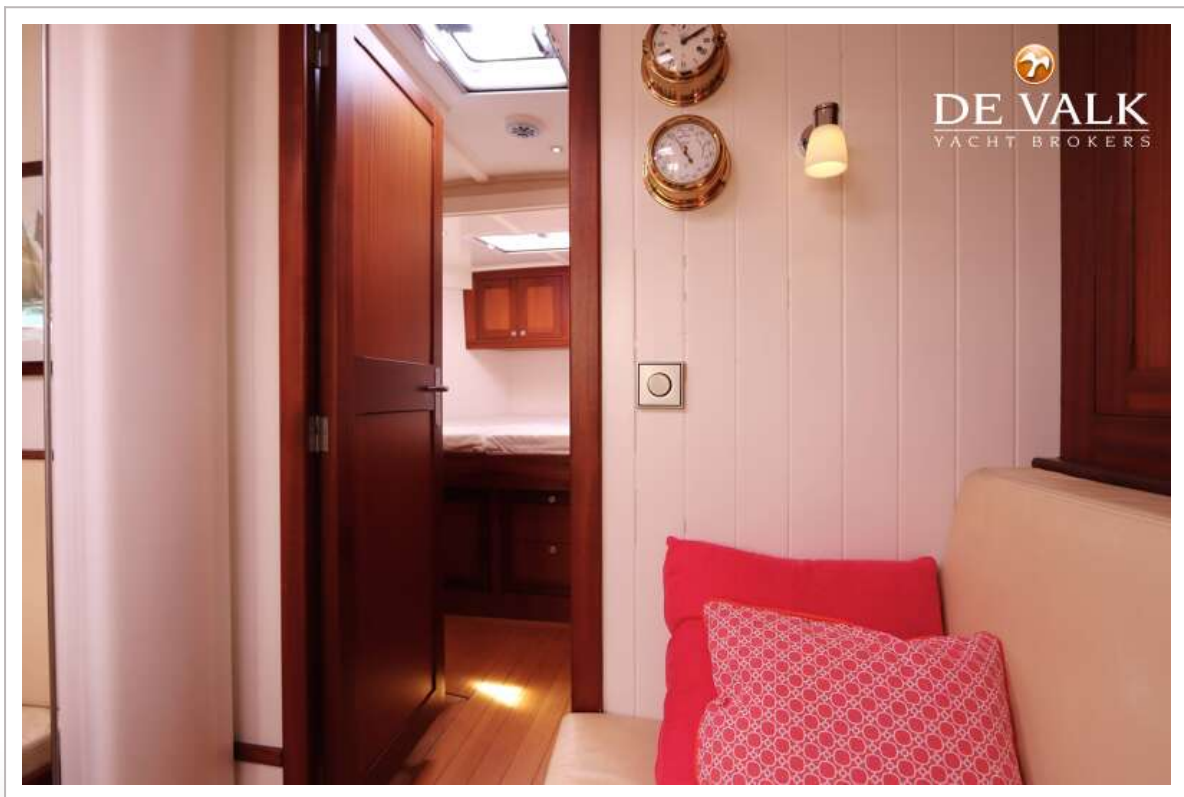




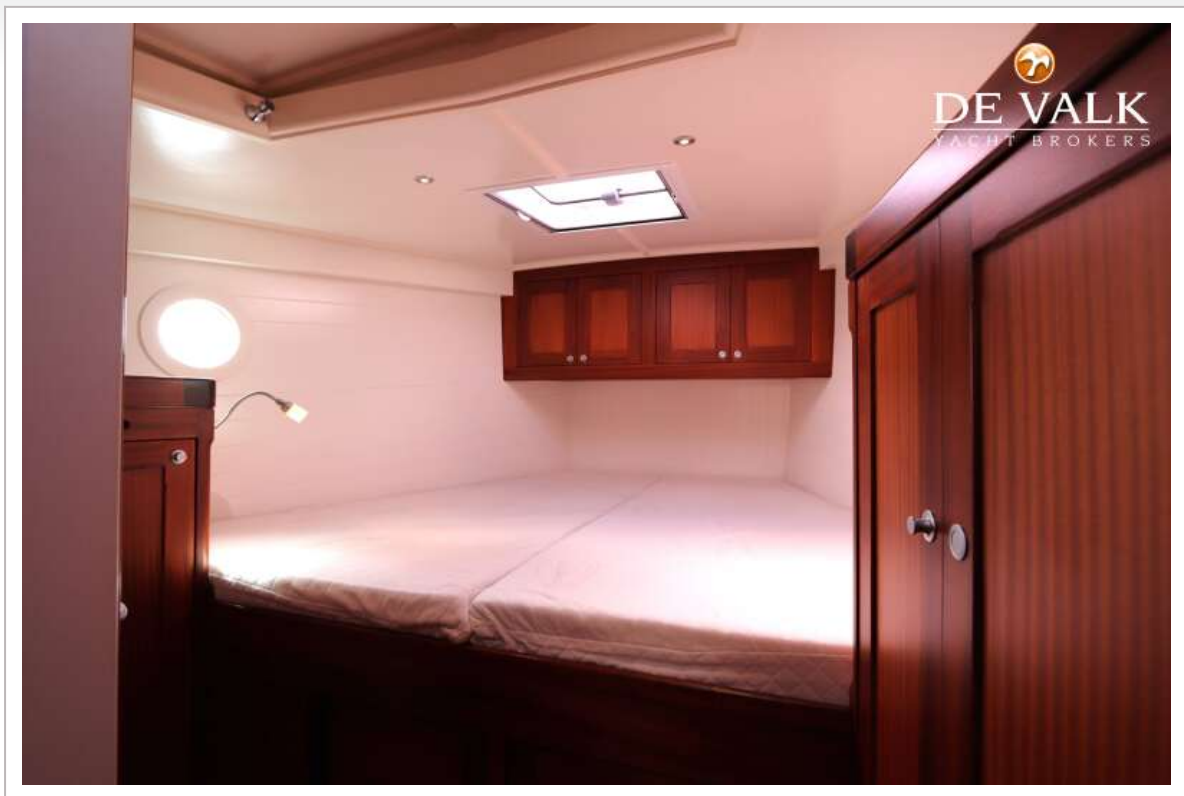
BESTE WIND 50

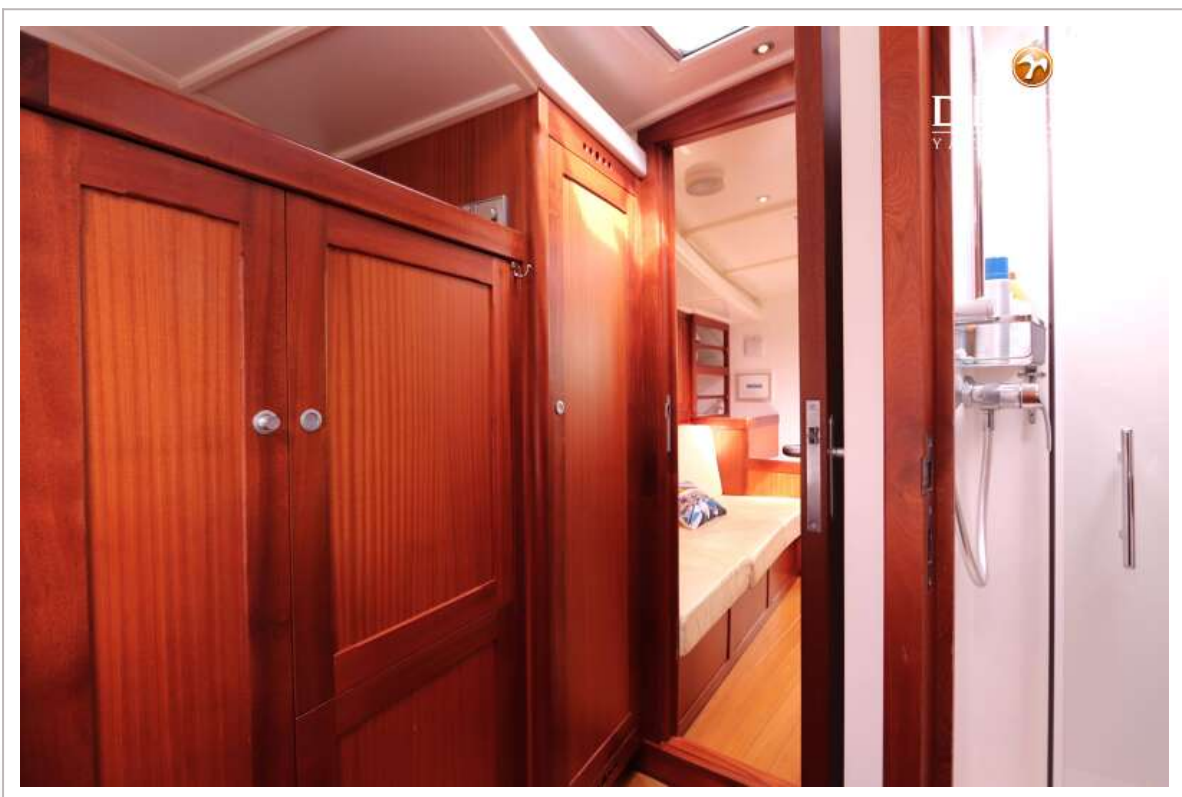


BESTE WIND 50

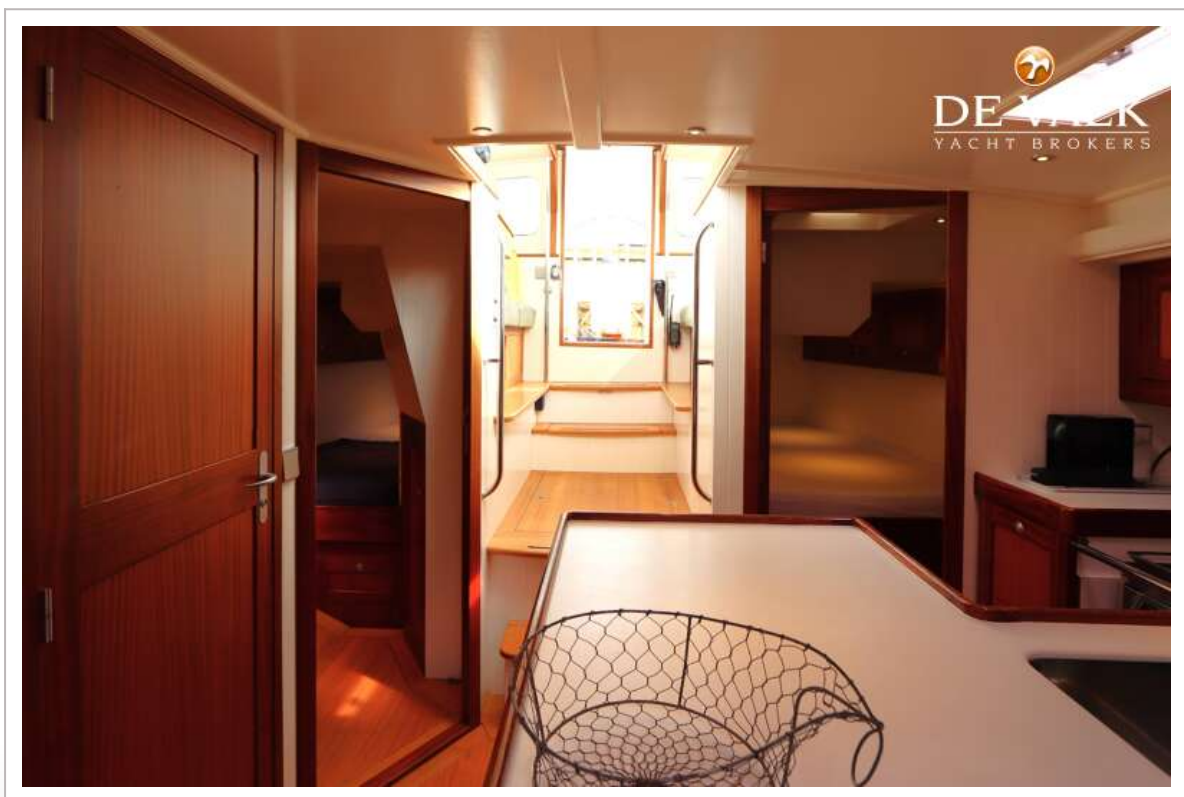


BESTE WIND 50





BESTE WIND 50





BESTE WIND 50

