



DE VALK  
YACHT BROKERS



TRINTELLA 44



DE VALK  
YACHT BROKERS

## BROKER'S COMMENTS

This Trintella 44 is a Dutch built Van de Stadt design with superb sea going characteristics. We at De Valk Yachtbrokers know this yacht for more than 20 years, and know she pleased her owners enormously. Still in very strong condition with a lot of equipment renewed through the years. A perfect yacht for long trips and living aboard. Lying in Prevesa on the west coast of Greece and ready for the next blue water adventure.

*Sofia Iliia-Salvanou*

## SPECIFICATIONS

<b>Dimensions</b>	13.40 x 4.10 x 2.20 (m)	<b>Builder</b>	Anne Wever, Trintella Yachts
<b>Built</b>	1979	<b>Cabins</b>	3
<b>Material</b>	GRP	<b>Berths</b>	8
<b>Engine(s)</b>	1 x Perkins diesel	<b>Hp/Kw</b>	120.00 (hp), 88.00 (kw)
<b>Asking price</b>	sold (VAT )	<b>Lying</b>	Mediterranean

## CONTACT

<b>Sales office</b>	De Valk Corfu	<b>Telephone</b>	(+30) 6948681503
<b>Address</b>	New Port of Corfu, near Gouvia Marina 490 83 Corfu GR	<b>E-mail</b>	corfu@devalk.nl

## DISCLAIMER

These particulars are given in good faith as supplied but cannot be guaranteed.



## GENERAL

<b>Model</b>	TRINTELLA 44
<b>Type</b>	sailing yacht
<b>LOA (m)</b>	13,40
<b>LWL (m)</b>	10,80
<b>Beam (m)</b>	4,10
<b>Draft (m)</b>	2,20
<b>Air draft (m)</b>	19,50
<b>Headroom (m)</b>	2,10
<b>Year built</b>	1979
<b>Builder</b>	Anne Wever, Trintella Yachts
<b>Country</b>	The Netherlands
<b>Designer</b>	Van de Stadt & Partners
<b>Displacement (t)</b>	19
<b>Ballast (tonnes)</b>	lead 6
<b>CE norm</b>	NA
<b>Hull material</b>	GRP
<b>Hull colour</b>	white
<b>Hull shape</b>	round-bilged
<b>Keel type</b>	fin keel
<b>Bilge keels</b>	yes
<b>Superstructure material</b>	GRP
<b>Rubbing strake</b>	wood
<b>Deck material</b>	GRP
<b>Deck finish</b>	teak
<b>Superstructure deck finish</b>	teak
<b>Cockpit deck finish</b>	teak
<b>Dorades</b>	yes
<b>Window material</b>	polycarbonate
<b>Deckhatch</b>	yes
<b>Portholes</b>	yes



<b>Radar arch</b>	yes
<b>Fuel tank (litre)</b>	GRP 450
<b>Level indicator (fuel tank)</b>	yes
<b>Freshwater tank (litre)</b>	GRP 800
<b>Level indicator (freshwater)</b>	yes
<b>Blackwater tank (litre)</b>	120 (not connected)
<b>Wheel steering</b>	mechanical
<b>Emergency tiller</b>	yes
<b>More info on paintwork</b>	Anti fouling (2019)
<b>Extra info</b>	new 24V fresh water pump including spare-one

## ACCOMMODATION

<b>Cabins</b>	3
<b>Berths</b>	8
<b>Interior</b>	teak
<b>Layout</b>	saloon, 3 cabins, 2x head
<b>Floor</b>	teak and holly
<b>Aft deck</b>	yes
<b>Saloon</b>	yes
<b>Headroom saloon (m)</b>	with improved seats 2,10
<b>Heating</b>	diesel ducted hot air Webasto
<b>Heating 2</b>	diesel ducted hot air Webasto
<b>Navigation center</b>	yes
<b>Chart table</b>	yes
<b>Aft Cabin</b>	yes
<b>Dinette</b>	yes
<b>Convertible berth</b>	2x
<b>Galley</b>	yes
<b>Countertop</b>	tiles
<b>Sink</b>	stainless steel 2x
<b>Cooker</b>	calor gas 2-flame



Oven	yes
Extractor	yes
Fridge	with freezing compartment Waeco
Hot water system	220V + engine
Water pressure system	electrical
Manual and/or foot pump	yes
Owners cabin	double bed
Bed length (m)	2,00
Wardrobe	hanging/drawers/shelves
Bathroom	en suite
Toilet	en suite
Toilet system	manual
Wash basin	in the bathroom
Shower	en suite
Guest cabin 1	v-bed
Bed length (m)	2,10
Wardrobe	hanging and shelves
Bathroom	shared
Toilet	shared
Toilet system	manual
Wash basin	in the bathroom
Guest cabin 2	bunk bed
Bed length (m)	2,00
Wardrobe	hanging and shelves
Bathroom	shared
Toilet	shared
Toilet system	manual
Wash basin	in the bathroom
Shower	shared
Extra info	electric gas switch
Extra info	lights partly in LED



## MACHINERY

<b>No of engines</b>	1
<b>Make</b>	Perkins
<b>HP</b>	120
<b>kW</b>	88,00
<b>Fuel</b>	diesel
<b>Year of overhaul</b>	including gearbox 2011
<b>Maximum speed (kn)</b>	7,00
<b>Cruising speed (kn)</b>	7,00
<b>Engine cooling system</b>	freshwater heat exchanger
<b>Drive</b>	shaft
<b>Gearbox</b>	hydraulic PARAGON (overhauled 2011)
<b>Engine controls</b>	bowden cable
<b>Bowthruster</b>	electric Including remote control
<b>Exhaust</b>	watercooled
<b>Propeller type</b>	fixed
<b>Propeller blades</b>	3
<b>Propeller shaft material</b>	stainless steel
<b>Shaft lubrication</b>	grease
<b>Manual bilge pump</b>	yes
<b>Electric bilge pump</b>	automatic
<b>Electrical installation</b>	12/24/230V
<b>Batteries</b>	1x 100Ah 12V (06/2019)
<b>Start battery</b>	2x 180Ah 24V (06/2019)
<b>Service battery</b>	6x 150Ah 24V (06/2019)
<b>Battery monitor</b>	yes
<b>Battery charger</b>	yes
<b>Inverter</b>	VICTRON
<b>Battery charger/inverter</b>	VICTRON 24 Volt/3000/70 Ah
<b>Solar panel</b>	2009
<b>Shorepower</b>	with cable



Extra info

Elektrical systems checked & overhauled, 2008

## NAVIGATION

Compass	yes
Electric compass	at auto pilot Raymarine
Depth sounder	Raymarine
Log	Raymarine
Windset	Raymarine
VHF	Raymarine
VHF handheld	yes
Autopilot	Raymarine
Rudder angle indicator	Raymarine
GPS	Phillips
Radar/GPS/plotter	Raymarine C-80
Navtex	not connected Furuno
AIS receiver	Raymarine
Extra info	bronze earth plate and Pactormodem
Extra info	navigation lights LED

## EQUIPMENT

Fixed windscreen	yes
Fixed hardtop	yes
Bimini	with extension till the mast
Sun awning	yes
Winter cover	yes
Cockpit cushions	All Wheater
Cockpit table	yes
Boarding ladder	stainless steel
Gangway	yes
Deck shower	yes
Anchor	Delta 40 Kg



Anchor chain	galvanized and calibrated 90 mtr 10mm
Anchor 2	Bruce 30 Kg
Windlass	electrical
Deck wash	24V
Dinghy	rigid inflatable Caribe RIB 3,5
Outboard	Tohatsu 9,9 Hp
Davits	steel
Davits controls	manual
Sea railing	wire
Railing side opening gates	2x
Pushpit	yes
Pulpit	yes
Life raft (pers)	container SEACO 6-pers
Last life raft survey	Expired 03/17
Lifejackets	6x
Lifebuoy	yes
Fenders	yes
Mooring lines	yes
Spare parts	yes
Radio-cd player	yes
Cockpit speakers	yes
Speakers in salon	yes
Clock - barometer	yes
Fire extinguisher	yes
Extinguisher in engine room	yes

## RIGGING

Rigging	sloop-cutter
Standing rigging	wire 2009
Brand mast	Rondal Sparcraft/
Material mast	aluminium



<b>Spreaders</b>	yes
<b>Mainsail cover</b>	2014
<b>Fully battened mainsail</b>	Sail Select/Tasker, 2014
<b>Cutterstay</b>	yes
<b>Genoa</b>	Sail Select/Tasker 2009
<b>Genoa III</b>	old 1
<b>Genoa furler</b>	Profurl
<b>Booster</b>	Schokker, 1989
<b>Removable innerforestay</b>	yes
<b>Stormjib</b>	2000
<b>Reefing System</b>	slabreefing
<b>Backstay adjuster</b>	hydraulic Navtec
<b>Boomvang</b>	mechanical
<b>Primary sheet winch</b>	Harken 42.2 ST
<b>Secondary sheet winch</b>	Barlow 34 CST
<b>Halyard winches</b>	3x (2x ST)
<b>Spi-pole</b>	aluminium 2x
<b>Isolated backstay</b>	yes
<b>Extra info</b>	ss bowsprit



# TRINTELLA 44



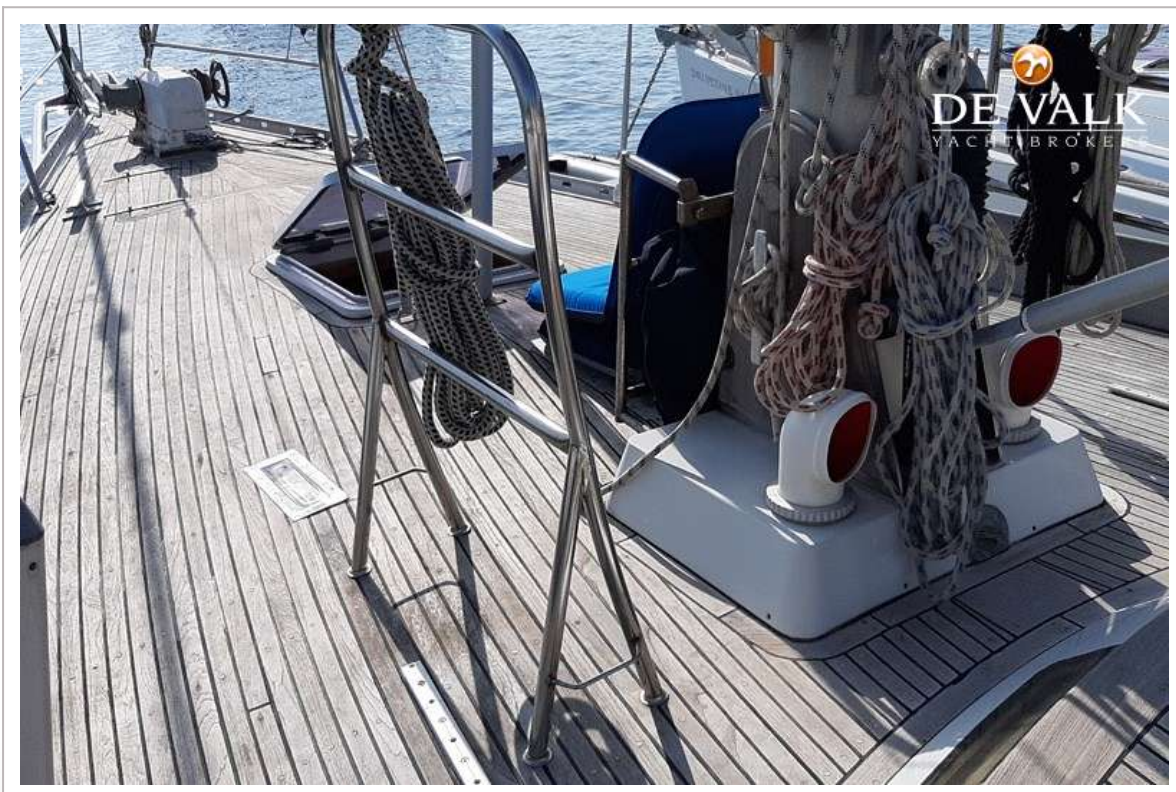
# TRINTELLA 44



# TRINTELLA 44



# TRINTELLA 44



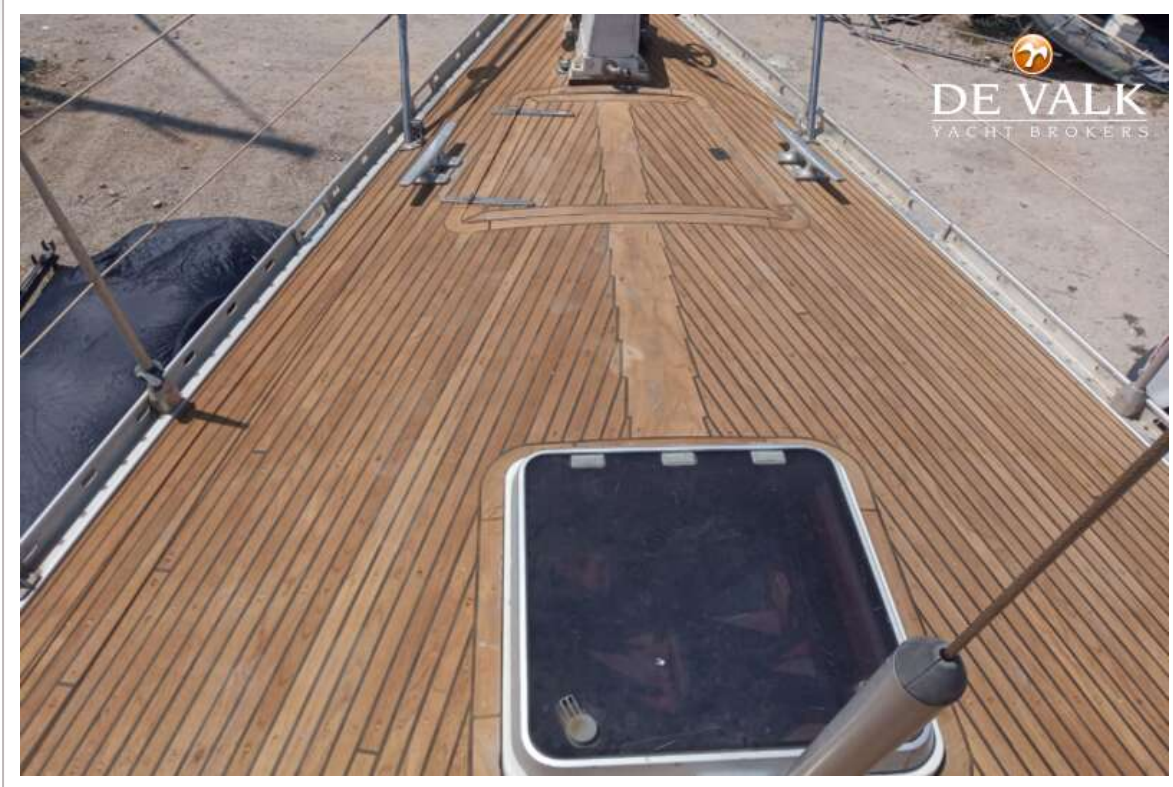
# TRINTELLA 44



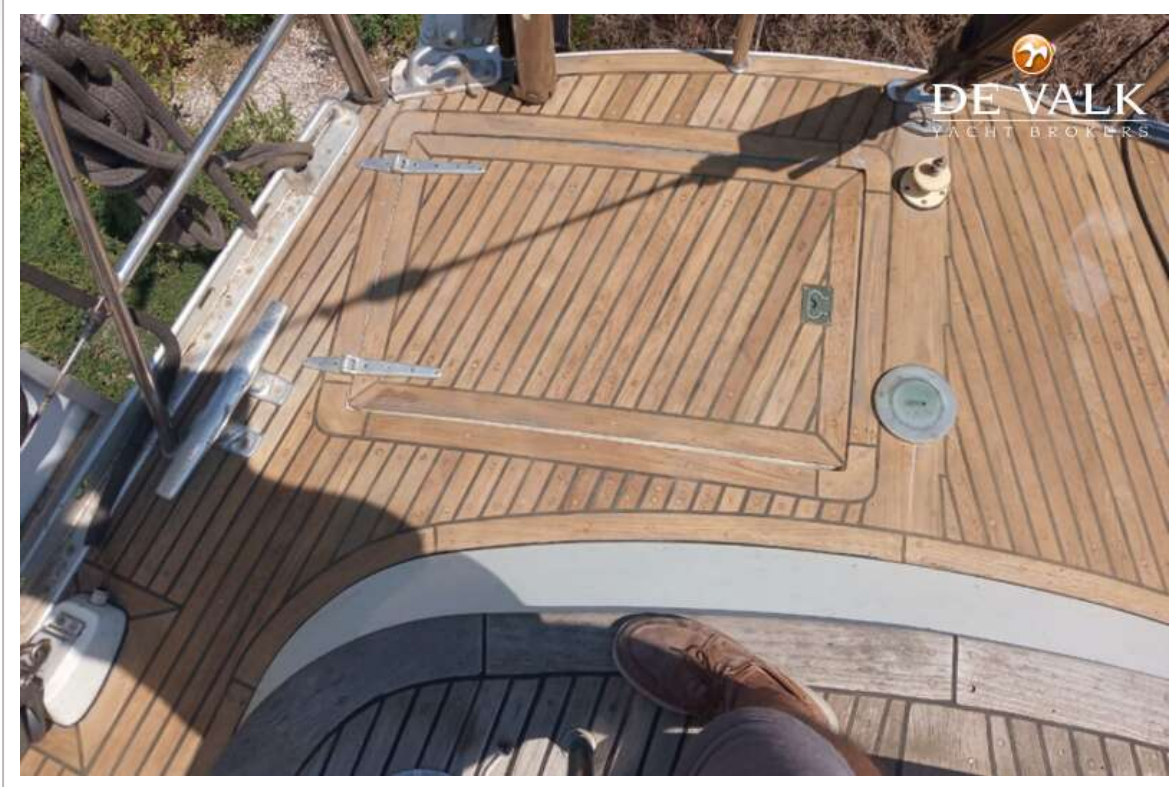
# TRINTELLA 44



# TRINTELLA 44



# TRINTELLA 44



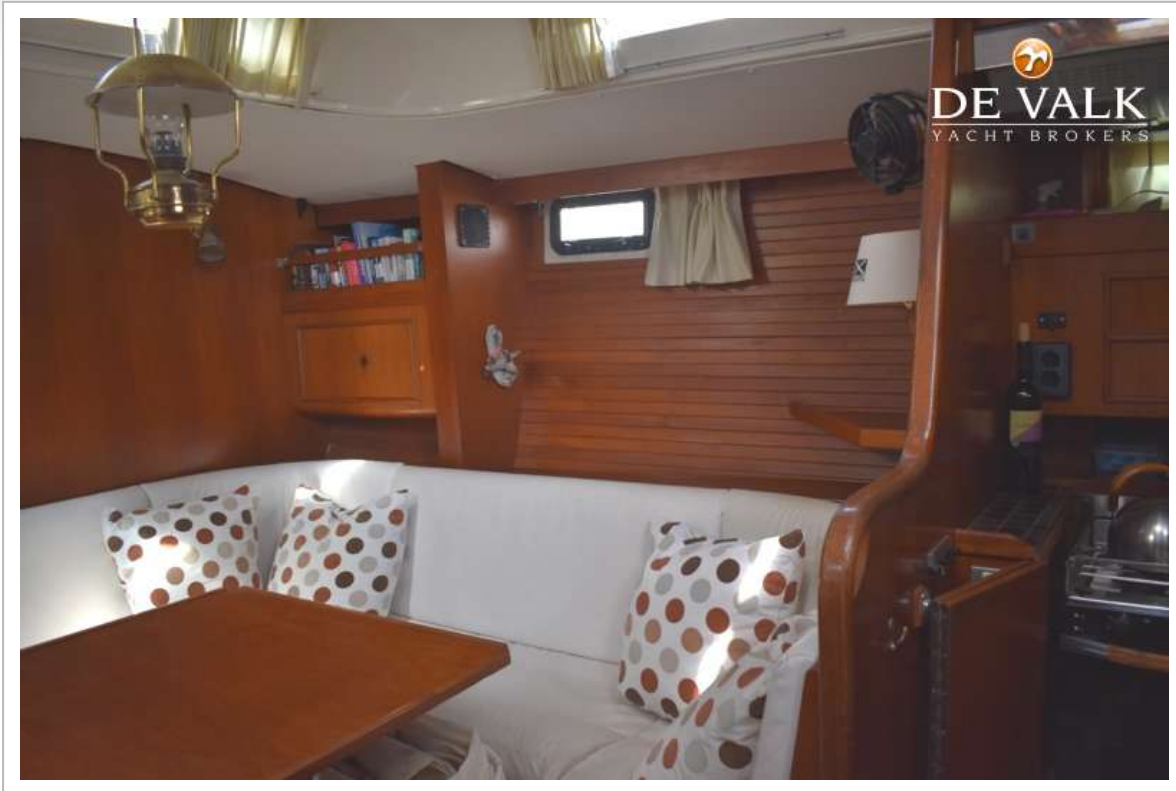
# TRINTELLA 44



# TRINTELLA 44



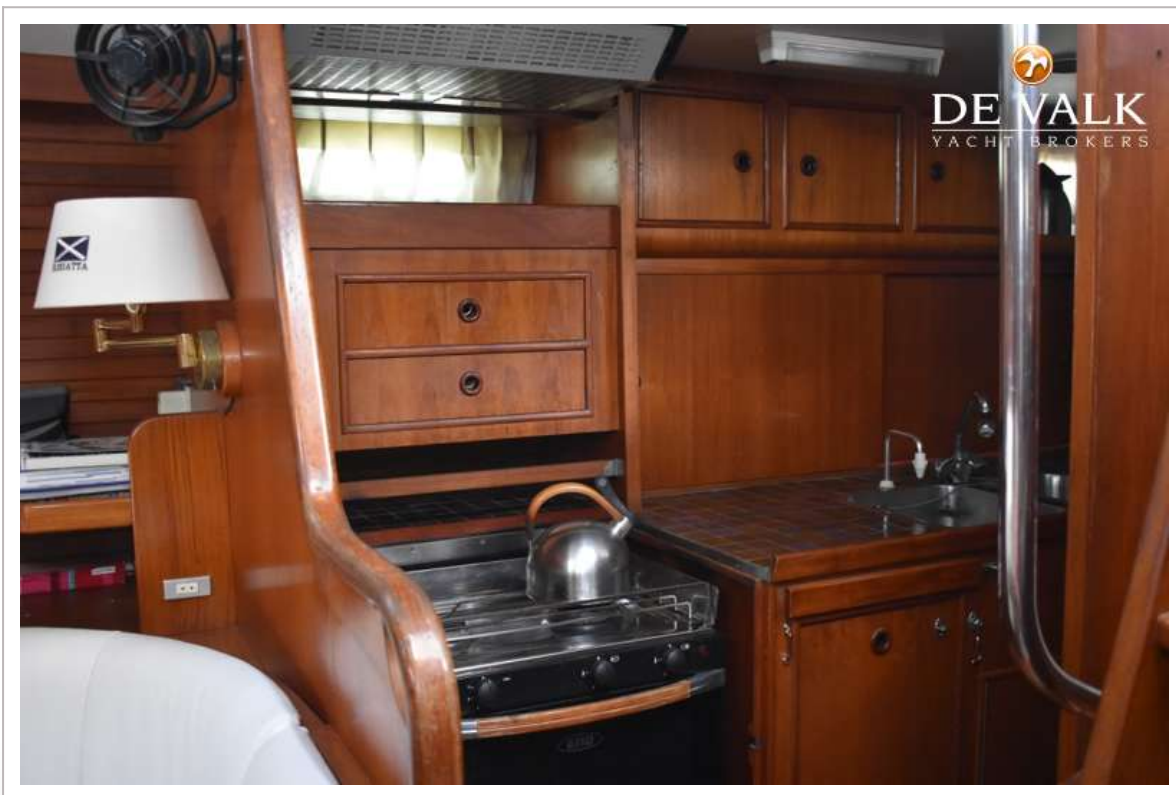
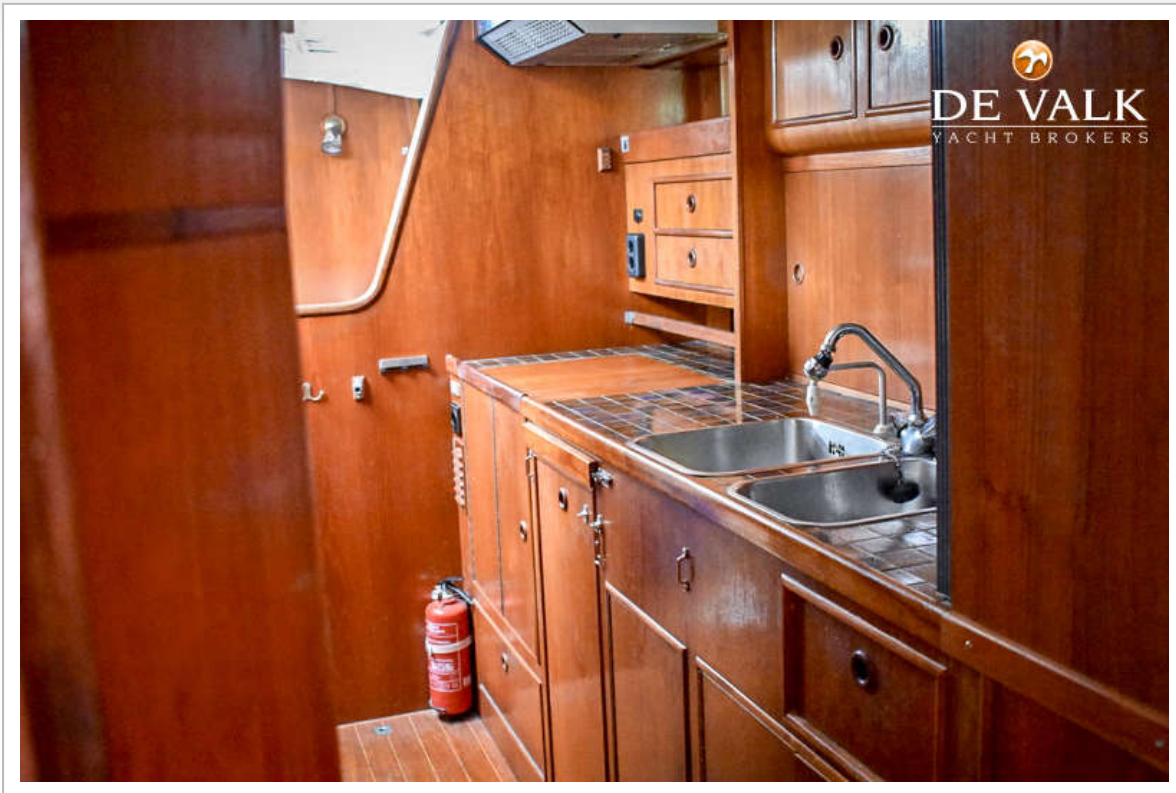
# TRINTELLA 44



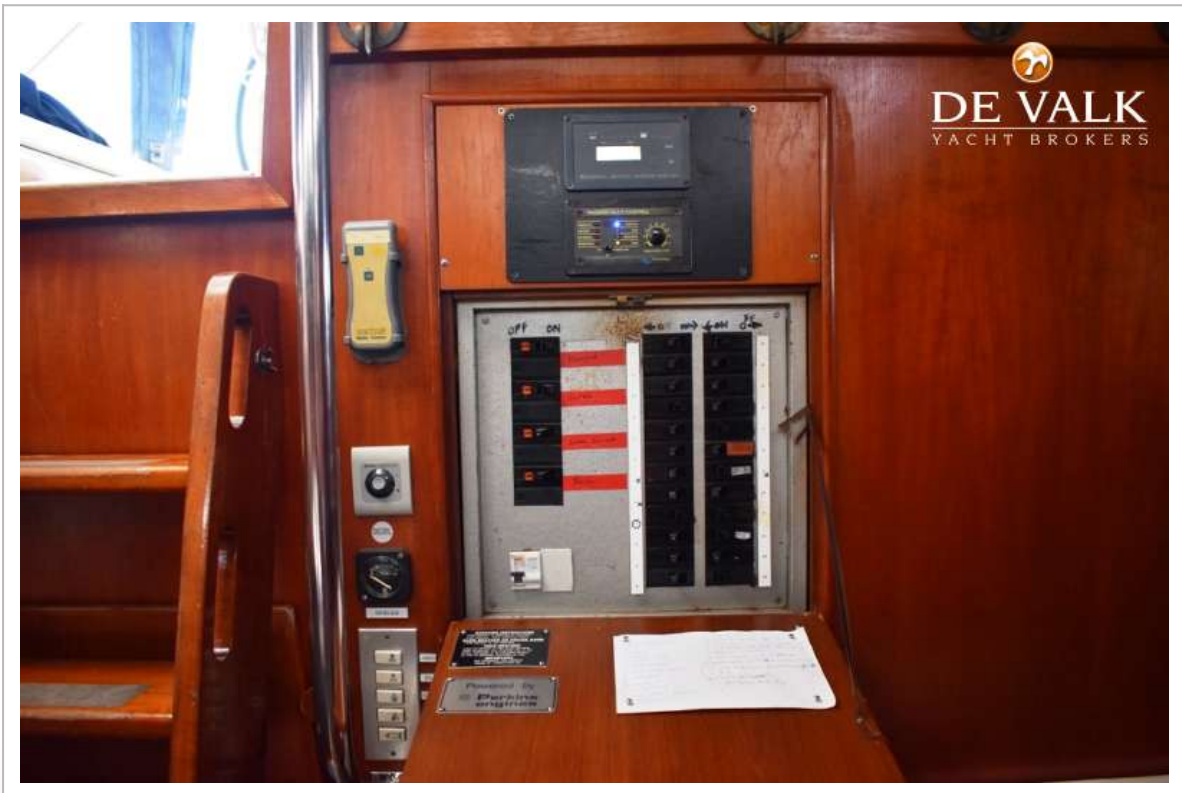
# TRINTELLA 44



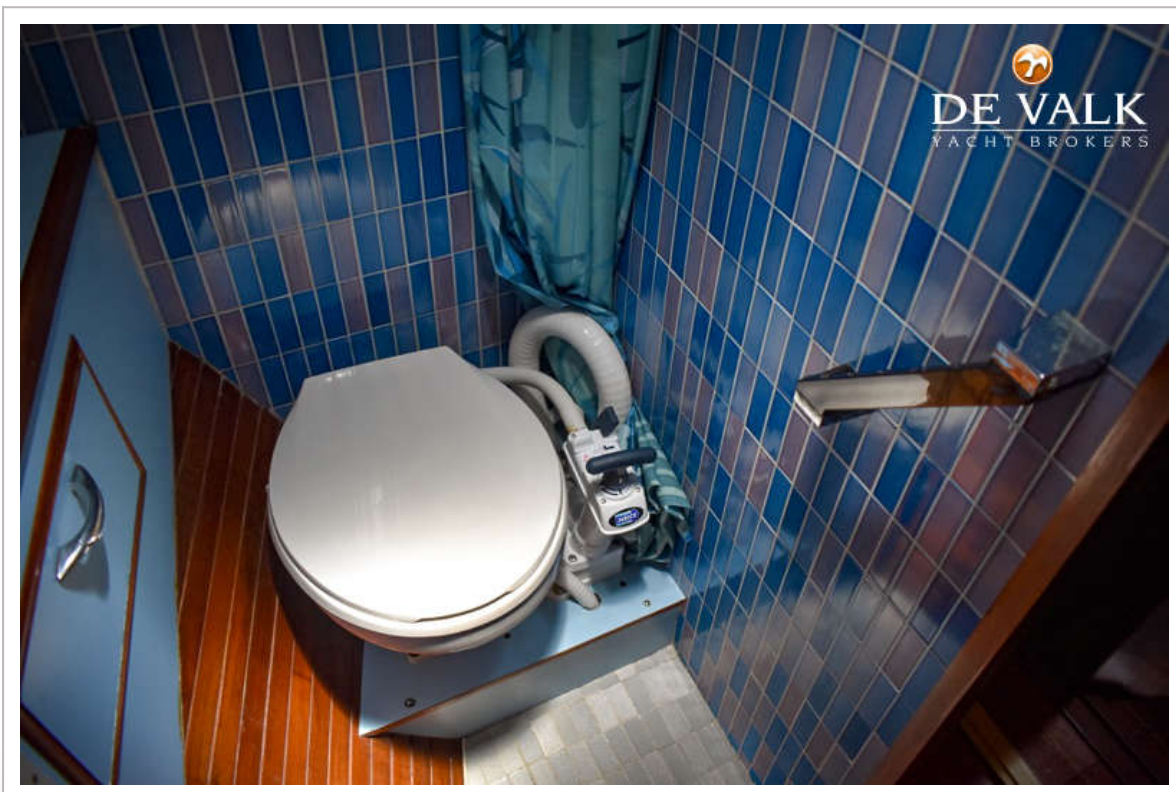
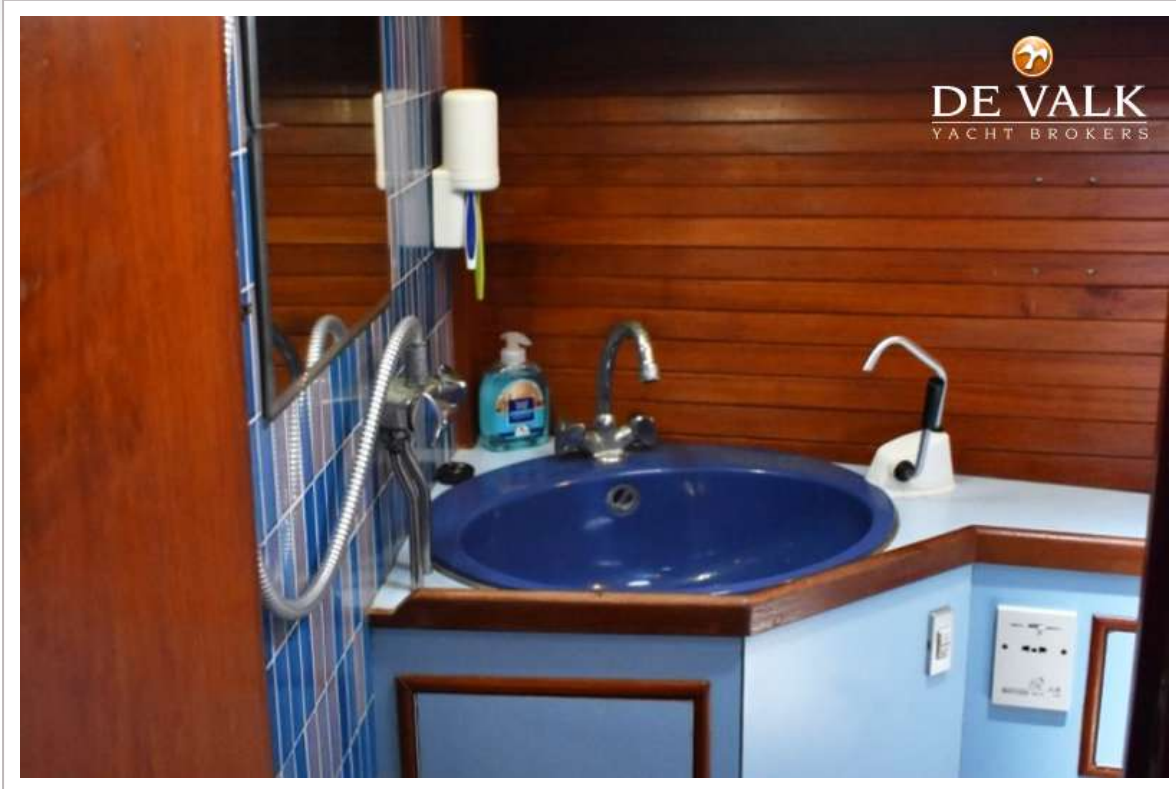
# TRINTELLA 44



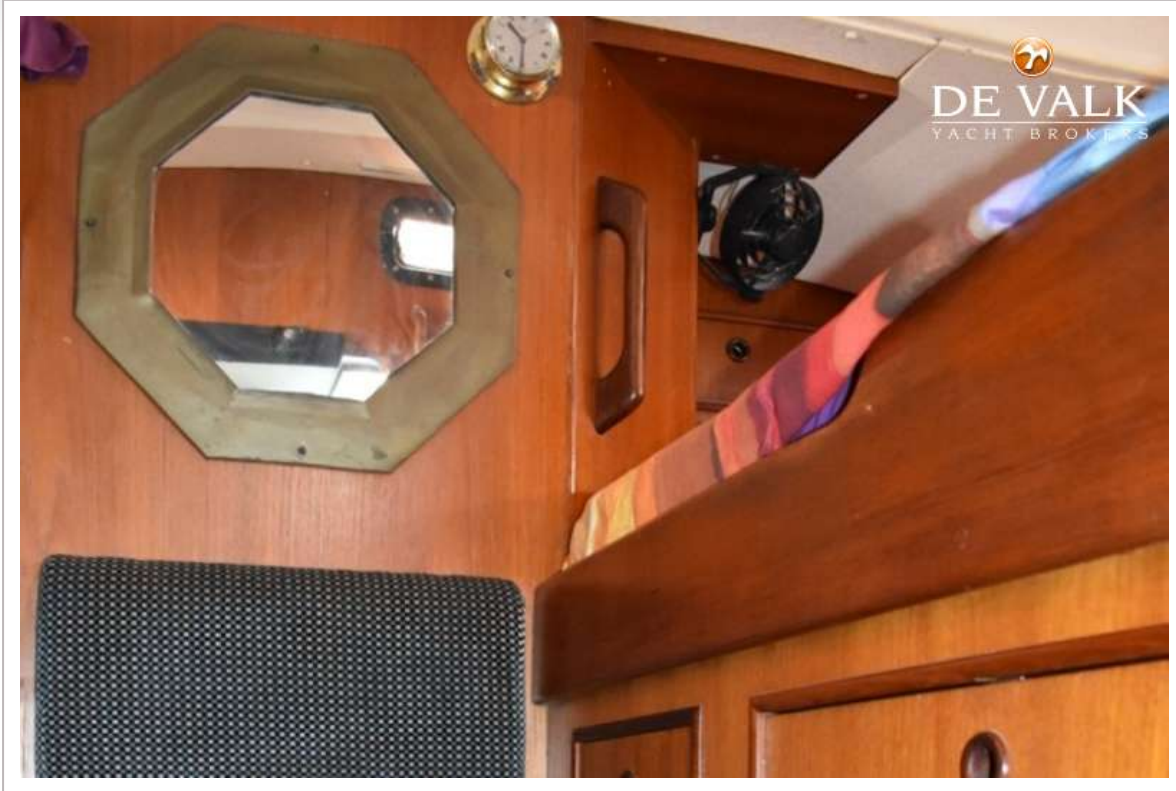
# TRINTELLA 44



# TRINTELLA 44



# TRINTELLA 44



# TRINTELLA 44

