



PUFFIN 36



DE VALK
YACHT BROKERS

PUFFIN 36

BROKER'S COMMENTS

The key words for the development of the Puffin Classics series were: space, speed, easy to handle, centreboard, strong and safe. The most beautiful places to sail can often be found between shallower waters. That is why a lifting keel version of the Puffin has been developed, so that you can also reach these locations. Take advantage of this unique opportunity and come and see this beautiful Puffin 36 at our location in Hindeloopen!

Hans Visser

SPECIFICATIONS

| | | | |
|---------------------|--------------------------------|----------------|------------------------|
| Dimensions | 10.67 x 3.52 x 1,00 / 1.90 (m) | Builder | Mekon / Prins Workum |
| Built | 1997 | Cabins | 2 |
| Material | Steel | Berths | 6 |
| Engine(s) | 1 x Nanni 4.220KC-ECO diesel | Hp/Kw | 50.00 (hp), 36.00 (kw) |
| Asking price | sold (VAT) | Lying | at sales office |

CONTACT

| | | | |
|---------------------|---|------------------|-----------------------|
| Sales office | De Valk Hindeloopen B.V. | Telephone | +31 514 52 40 00 |
| Address | Oosterstrand 1 8713 JS Hindeloopen NL | E-mail | hindeloopen@devalk.nl |

DISCLAIMER

These particulars are given in good faith as supplied but cannot be guaranteed.



GENERAL

| | |
|----------------------------|------------------------|
| Model | PUFFIN 36 |
| Type | sailing yacht |
| LOA (m) | 10,67 |
| Beam (m) | 3,52 |
| Draft (m) | 1,90 |
| Draft min (m) | 1,00 |
| Air draft (m) | 16,75 |
| Headroom (m) | 2,00 |
| Year built | 1997 |
| Builder | Mekon / Prins Workum |
| Country | The Netherlands |
| Designer | Olivier van Meer |
| Displacement (t) | 8 |
| CE norm | NA |
| Hull material | steel |
| Hull colour | blue |
| Hull thickness (mm) | 4mm |
| Hull shape | round-bilged |
| Keel type | lifting keel |
| Superstructure material | steel |
| Superstructure (mm) | 4mm |
| Deck plate thickness (mm) | yes |
| Rubbing strake | steel |
| Deck material | steel |
| Deck finish | non-skid paint |
| Superstructure deck finish | paint |
| Cockpit deck finish | teak Teak/ verf |
| Antifouling (year) | 2022 |
| Window frame | aluminium Alu/ messing |
| Window material | tempered glass |



| | |
|------------------------------|--|
| Portholes | brass |
| Insulation | foam |
| Flybridge suncover | De Vries Sails |
| Fuel tank (litre) | stainless steel 2x 100 ltr. |
| Freshwater tank (litre) | stainless steel 2x 150 ltr. |
| Level indicator (freshwater) | yes |
| Blackwater tank (litre) | steel 100 ltr. |
| Level indicator (blackwater) | yes |
| Tiller | yes |
| Emergency tiller | yes |
| More info on paintwork | Completely newly painted in 2019. * 2022: Check and touch up painting, new anodes and antifouling. |
| Extra info | Major maintenance 2022 |

ACCOMMODATION

| | |
|-------------------------------|------------------------------|
| Cabins | 2 |
| Berths | 6 |
| Interior | mahogany Mahonie/ teak |
| Floor | |
| Open cockpit | yes |
| Saloon | yes |
| Headroom saloon (m) | 1,90m |
| Heating | diesel ducted hot air Mikuni |
| Chart table | yes |
| Aft Cabin | yes |
| Dinette | yes |
| Dinette to convert into berth | yes |
| Galley | yes |
| Countertop | corian |
| Sink | stainless steel |
| Cooker | Force 10, gas |



| | |
|-----------------------|-----------------------|
| Oven | Force 10 |
| Fridge | yes |
| Hot water system | 220V + engine |
| Water pressure system | electrical |
| Crockery | yes |
| Owners cabin | double bed + fauteuil |
| Bed length (m) | 2,0m |
| Wardrobe | hanging |
| Bathroom | shared |
| Toilet | shared |
| Toilet system | manual Rheinstrom Y4 |
| Wash basin | in the bathroom |
| Shower | shared |
| Guest cabin 1 | double bed |
| Bed length (m) | 2,10m |
| Wardrobe | shelves 3x |

MACHINERY

| | |
|-----------------------|--------------------|
| No of engines | 1 |
| Make | Nanni |
| Type | 4.220KC-ECO |
| HP | 50 |
| kW | 36 |
| Fuel | diesel |
| Year installed | 1998 |
| Maximum speed (kn) | 7,00 |
| Cruising speed (kn) | 6,00 |
| Consumption (l/hr) | 3,00 |
| Range (nm) | 350 |
| Engine hours | 1400 |
| Engine cooling system | closed keelcooling |



| | |
|--------------------------|--|
| Drive | shaft |
| Engine controls | manual |
| Gearbox | mechanical |
| Gearbox | Hurth |
| Exhaust | dry |
| Propeller type | fixed |
| Propeller blades | 3x |
| Propeller shaft material | |
| Shaft lubrication | water |
| Manual bilge pump | yes |
| Electric bilge pump | yes |
| Bilge alarm | yes |
| Electrical installation | Mastervolt 220/ 12 Volt |
| Batteries | Mastervolt AGM 130 Ah 3x |
| Start battery | Mastervolt AGM 90 Ah 1x |
| Battery monitor | yes |
| Battery charger/inverter | Mastervolt |
| Shorepower | with cable |
| Extra info | Major maintenance Nanni and propulsion: 2022; new stern tube: 2022 |

NAVIGATION

| | |
|-------------------|--|
| Electric compass | Autohelm |
| Depth sounder/log | Autohelm |
| Windset | Autohelm |
| VHF | Shipmate |
| Autopilot | yes |
| GPS | Philips (niet werkend) + Handheld Garmin |

EQUIPMENT

| | |
|--------------|-----------------|
| Storm blinds | Lewmar Ocean 3x |
|--------------|-----------------|



| | |
|----------------------------|------------------|
| Sun awning | yes |
| Boarding ladder | aluminum |
| Anchor | Bruce |
| Anchor chain | 50m |
| Anchor chain | 50m |
| Windlass | electrical |
| Sea railing | wire |
| Grab rail (superstructure) | teak |
| Railing side opening gates | yes |
| Pushpit | yes |
| Pulpit | yes |
| Life raft | Bag |
| Life raft (pers) | Seago 4 personen |
| Last life raft survey | 2009 |
| Lifebuoy | yes |
| Danbuoy | yes |
| Fenders | 6x 2x bol |
| Mooring lines | yes |
| Spare parts | yes |
| Radio-cd player | yes |
| iPod connection | yes |
| Speakers in salon | 2x |
| Fire extinguisher | 2x |

RIGGING

| | |
|------------------|---|
| Rigging | cutter |
| Standing rigging | wire |
| Brand mast | Sparcraft |
| Material mast | aluminium coated |
| Spreaders | 1x |
| Mainsail | 31m2 De Vries/ Lemmer 3x reefbaar, classic look |



| | |
|------------------------------|--|
| Mainsail cover | Blue |
| Jib | 20m2 stagfok |
| Jib I | 33m2, on profurl furler system |
| Jib II | 26m2, on profurl furler sytem (new) |
| Stormjib | 7m2, orange new |
| Reefing System | slabreefing |
| Backstay adjuster | mechanical |
| Boomvang | tackle |
| Primary sheet winch | Lewmar 1x (main sheet) |
| Secondary sheet winch | Lewmar 2x (stagfok) |
| Genoa sheetwinches | Lewmar 2x |
| Halyard winches | Lewmar 1x (mainsail) |
| Reefing winch | Lewmar 1x |
| Extra info | Beslag voor gennaker/ spinnaker aanwezig |



PUFFIN 36



PUFFIN 36



PUFFIN 36



PUFFIN 36



PUFFIN 36



PUFFIN 36



PUFFIN 36



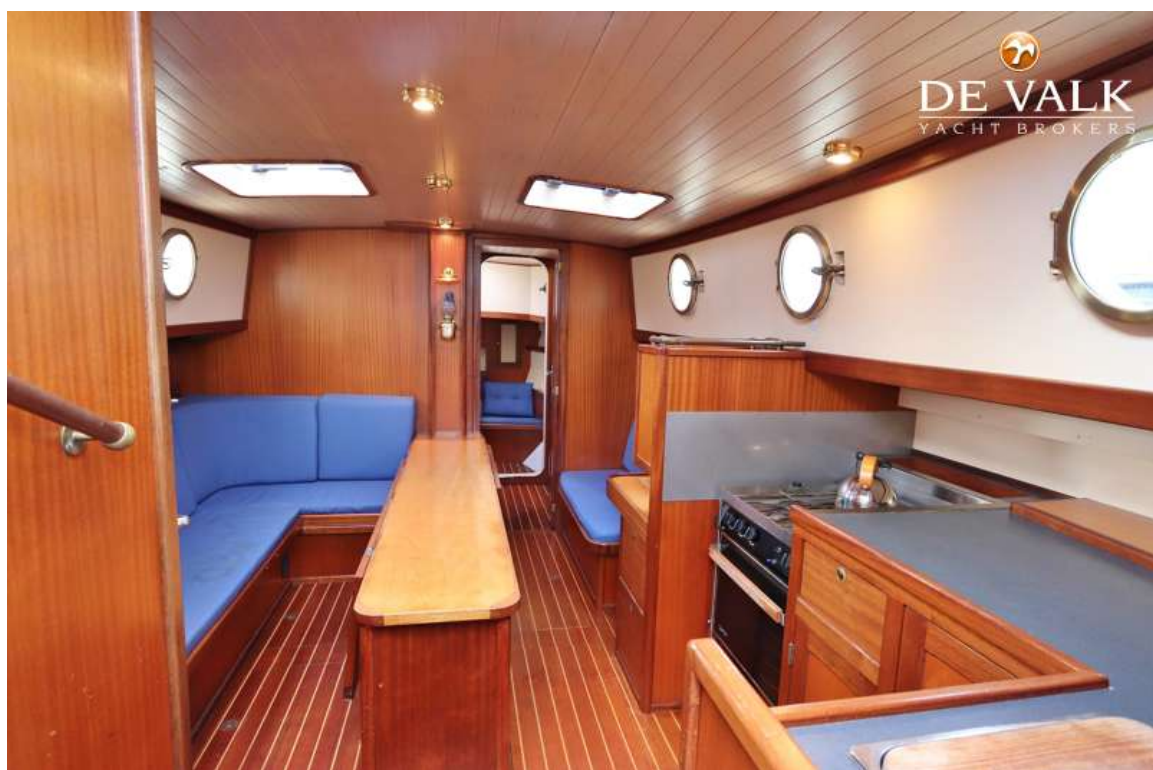
PUFFIN 36



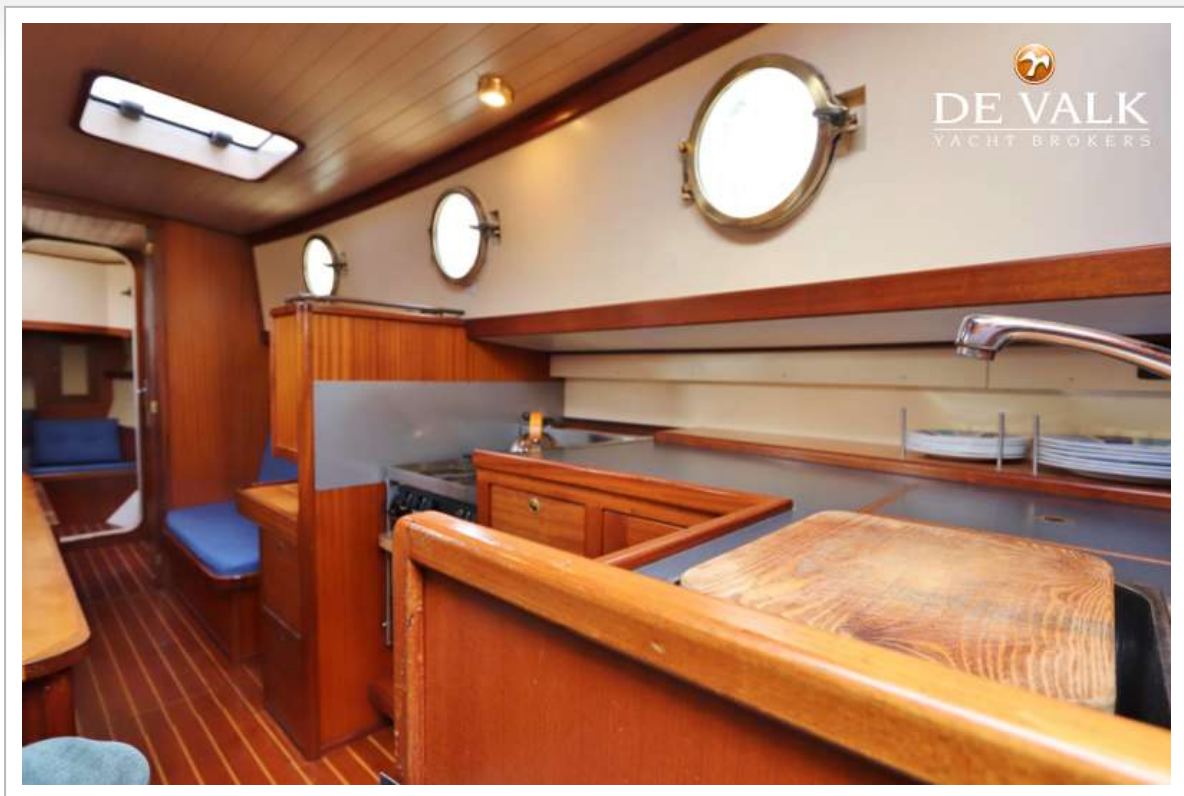
PUFFIN 36



PUFFIN 36

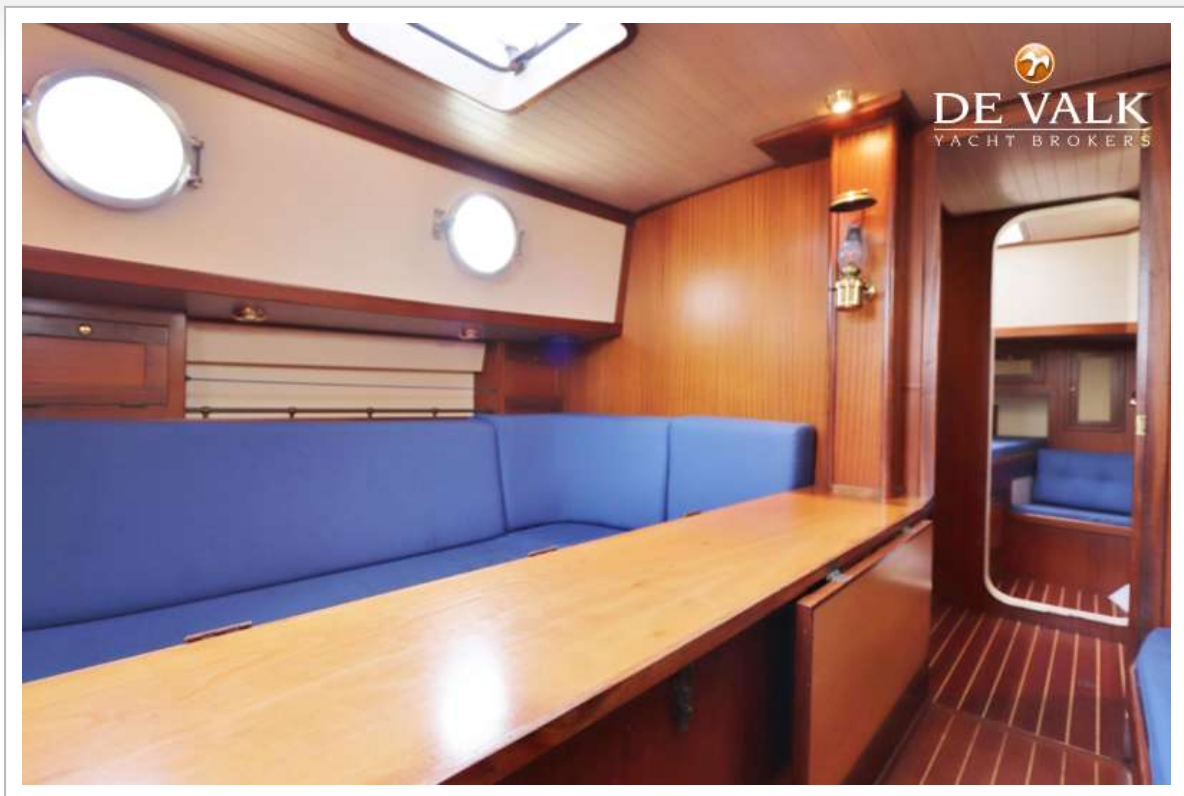


PUFFIN 36

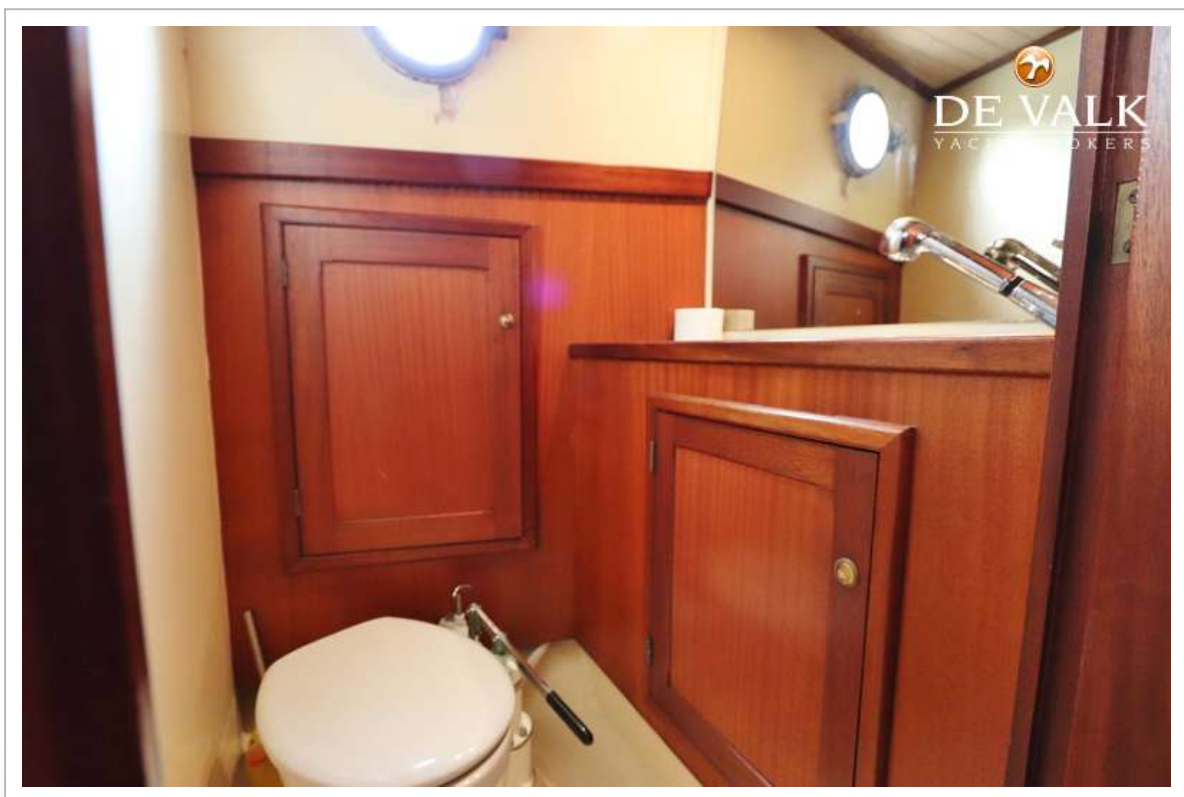


PUFFIN 36





PUFFIN 36

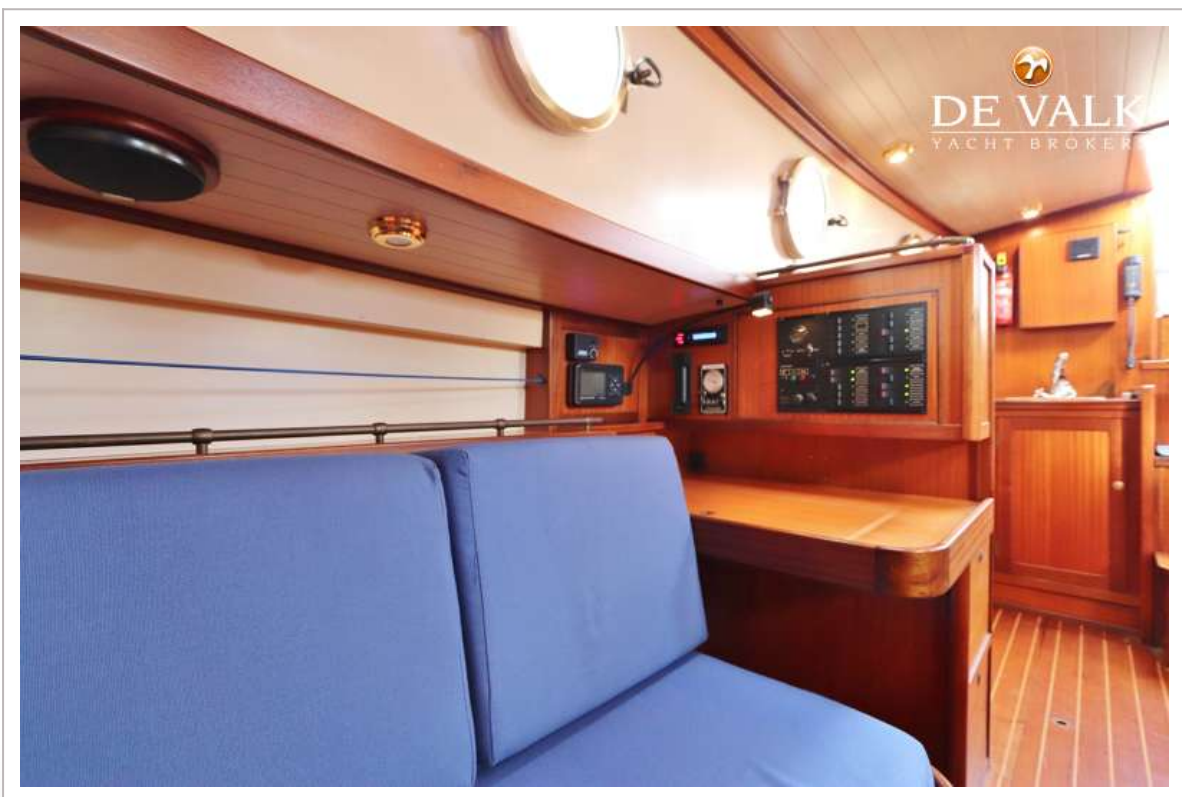


PUFFIN 36





PUFFIN 36



PUFFIN 36

