



DE VALK
YACHT BROKERS



ISLAND PACKET 380



DE VALK
YACHT BROKERS

ISLAND PACKET 380

BROKER'S COMMENTS

The Island Packet 380 is a great seaworthy cutter rigged cruiser with a S-shaped hull and known around the world for its unmatched accommodations and seaworthiness. 'Aurora' is a One-Owner, beautiful kept and finished yacht which offers you a spacious accommodation with two cabins. A nearly new Yanmar 54 HP diesel engine, recent set of sails, Kato davits, bimini and cockpit cover and many other extra's makes her ready to set sail to any place in the world. Located in our sales marina. Visit is possible 7 days a week.

Harald Padberg

SPECIFICATIONS

Dimensions	12.06 x 4.10 x 1.40 (m)	Builder	Island Packet Yachts USA
Built	2000	Cabins	2
Material	GRP	Berths	6
Engine(s)	1 x Yanmar 4JH5E diesel	Hp/Kw	54.00 (hp), 39.69 (kw)
Asking price	sold (VAT)	Lying	at sales office

CONTACT

Sales office	De Valk Monnickendam B.V.	Telephone	+31 (0)299 65 63 50
Address	Hoogedijk 6 1145 PM Katwoude NL	E-mail	monnickendam@devalk.nl

DISCLAIMER

These particulars are given in good faith as supplied but cannot be guaranteed.



ISLAND PACKET 380

GENERAL

Model	ISLAND PACKET 380
Type	sailing yacht
LOA (m)	12,06
LWL (m)	9,75
Beam (m)	4,10
Draft (m)	1,40
Air draft (m)	16,55
Headroom (m)	1,97
Year built	2000
Builder	Island Packet Yachts USA
Country	U.S.A.
Designer	Bob Johnson
Displacement (t)	9,5
Ballast (tonnes)	lead in GRP 4,1
CE norm	A
Hull material	GRP
Hull colour	Ivory
Hull thickness (mm)	40
Hull shape	S-bilged
Keel type	long keel
Superstructure material	GRP
Superstructure (mm)	30
Deck plate thickness (mm)	30
Rubbing strake	wood
Deck material	GRP
Deck finish	non-skid moulded in
Superstructure deck finish	non-skid moulded in
Cockpit deck finish	non-skid moulded in
Dorades	3 X
Window frame	stainless steel



ISLAND PACKET 380

Window material	tempered glass
Deckhatch	5 X
Portholes	stainless steel
Fuel tank (litre)	aluminium 320 L.
Level indicator (fuel tank)	yes
Freshwater tank (litre)	aluminium 640 L.
Level indicator (freshwater)	yes
Blackwater tank (litre)	GRP 85 L.
Blackwater tank extraction	deck extraction + uw line
Wheel steering	mechanical
Emergency tiller	yes
More info on hull	Professional cleaned, detailed and polished August 2020

ACCOMMODATION

Cabins	2
Berths	6
Interior	teak
Floor	teak and holly
Open cockpit	yes
Headroom saloon (m)	1,97 M.
Heating	Webasto AirTop
Chart table	yes
Aft Cabin	yes
Galley	yes
Countertop	Duropal
Sink	stainless steel
Cooker	calor gas
Oven	yes
Microwave	Origo 220V
Hot water system	Seaward F1100
Water pressure system	electrical



Manual and/or foot pump	yes
Owners cabin	French bed
Bed length (m)	2,10 M.
Wardrobe	hanging/drawers/shelves
Bathroom	en suite
Toilet	en suite
Toilet system	manual Raritan PH II
Wash basin	in the bathroom
Shower	en suite
Guest cabin 1	double bed
Bed length (m)	2,10 M.
Wardrobe	drawers and shelves

MACHINERY

No of engines	1
Make	Yanmar
Type	4JH5E
HP	54
kW	39,69
Fuel	diesel
Year installed	2017
Maximum speed (kn)	8
Cruising speed (kn)	6 / 1500 rpm
Engine hours	133
Drive	shaft
Shaft seal	yes
Engine controls	bowden cable
Gearbox	mechanical
Exhaust	watercooled
Propeller type	fixed
Propeller blades	3 x 18x11 RH - 1 1/4



Propeller shaft material	stainless steel
Manual bilge pump	yes
Electric bilge pump	yes
Electrical installation	12/220V
Generator	Honda 2000E - 110V - portable
Start battery	1 X
Service battery	4 X AGM Lifelink GPL-27 - 2015
Battery monitor	yes
Battery charger	Centaur Victron 12/40 -0-265 Vac. (2007)
Wind generator	Kiss
Solar panel	2 X BP 585-F
Diode battery combiners	yes
Shorepower	with cable
Insulation transformer	Battery Isolator 200-2
Extra info	Balmar alternator 150 Amp - 2017
Extra info	Water maker Ech2 Otec 12V 200dml - needs to be serviced

NAVIGATION

Compass	Richie SB500
Depth sounder/log	Silva
Windset	Raymarine (2017)
VHF	Westmarine 500dsc
VHF handheld	Horizon
Autopilot	Raymarine ST6000 + remote control
Wind vane steering install.	Pacific windpilot + Simrad TP10 tiller pilot
Radar	Furuno 1715
GPS	Silva Nexus + Garmin HVS antenna (antenna new 2017)
Plotter	Standard Horizon CP300i
Radio receiver	SSB Radio Kenwood TS-50 + SGC-203 Ant. tuner + SCS PTC Ile modem
Transmitter	SSB Radio Kenwood TS-50 + SGC-203 Ant. tuner + SCS PTC Ile modem



EQUIPMENT

Sprayhood with grab rail	new windows and zippers Sept. 2020
Cockpit cover	yes
Bimini	yes
Cockpit cushions	yes
Cockpit table	yes
Bathing platform	yes
Boarding ladder	stainless steel
Deck shower	yes
Anchor	Delta
Anchor chain	50 meter 8 mm - stainless steel
Anchor 2	25 Kg Bugel Stainless Steel + 1 x Alu. Fluke/Fortress
Windlass	electrical Kobra 1000
Deck wash	yes
Dinghy	rigid inflatable Suzumar 310
Outboard	Yamaha 2-stroke 5 HP (2017)
Davits	stainless steel Kato Island (incl. crossbar & outboard crane)
Deck crane	manual
Sea railing	wire
Grab rail (superstructure)	stainless steel
Railing side opening gates	yes
Pushpit	yes
Pulpit	yes
Rope cutter	yes
Radar reflector	yes
Fenders	yes
Mooring lines	yes
Spare parts	yes
Tools	yes
Extra info	insect screens for all windows + sun covers for deck hatches
Extra info	Windlass new motor in 2017, 2 x 10 LBS aluminum propane tanks



Extra info

Magma Stainless Steel propane BBQ

RIGGING

Rigging

cutter

Standing rigging

wire (2008)

Brand mast

Seldén

Material mast

aluminium

Spreaders

yes

Keel stepped mast

yes

Mainsail

30 m2 - Bank Sails - (2020)

Mainsail cover

yes

Stoway mast

yes

Cutterstay

yes

Genoa

52 m2 - Ulmann Sails (2019)

Genoa furler

yes

Yankee

Barrow Sark (2003)

Stormjib

Airforce 12 m2 (2001)

Self tacking jib installation

yes

Boomvang

mechanical and tackle

Primary sheet winch

Lewmar Ocean 30 CST

Genoa sheetwinches

Lewmar Ocean 48 CST 2-speed

Reefing winch

Lewmar Ocean 30 CST

Spi-pole

aluminium

Extra info

Standing and running rigging renewed in 2008



ISLAND PACKET 380



ISLAND PACKET 380



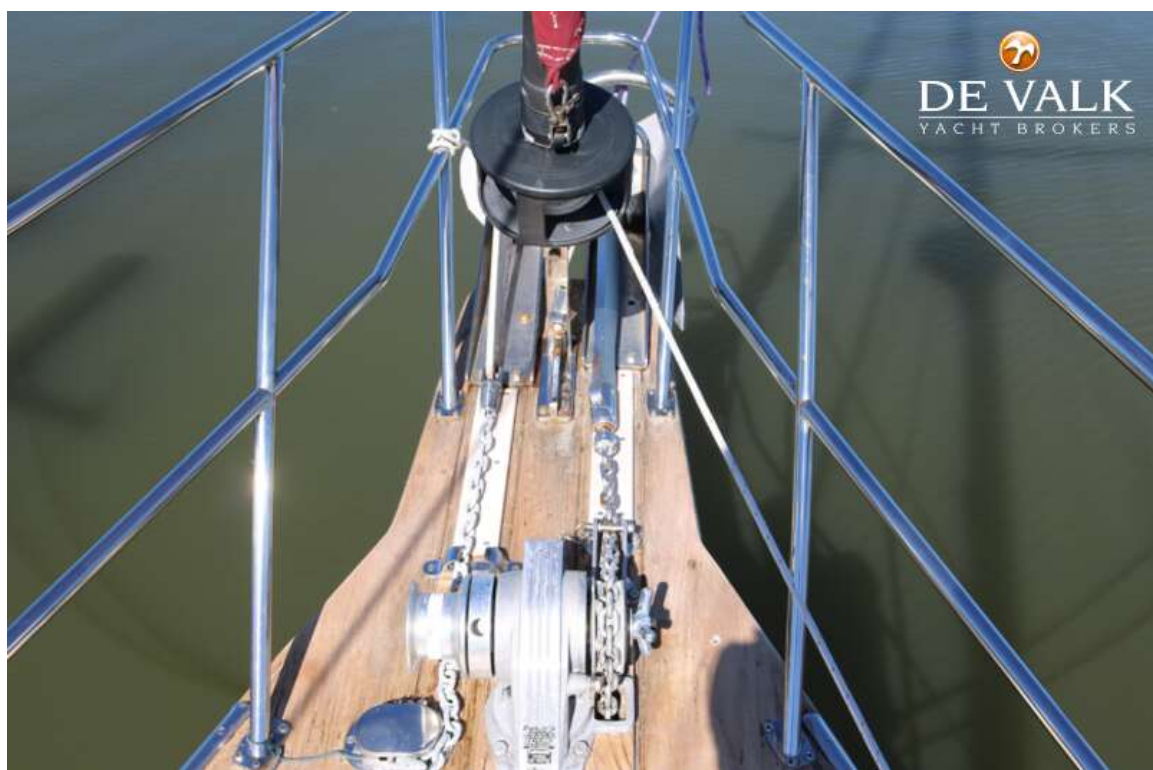
ISLAND PACKET 380



ISLAND PACKET 380



ISLAND PACKET 380



ISLAND PACKET 380



ISLAND PACKET 380



ISLAND PACKET 380



ISLAND PACKET 380



ISLAND PACKET 380



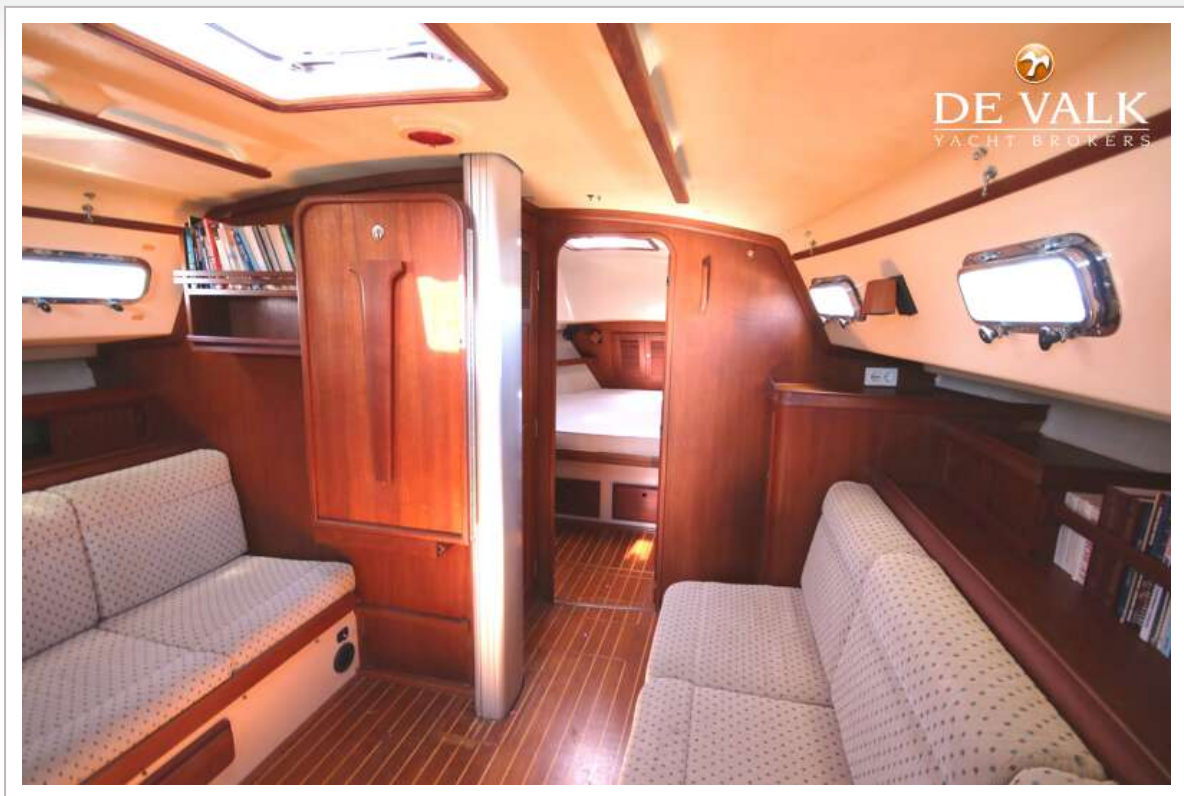
ISLAND PACKET 380



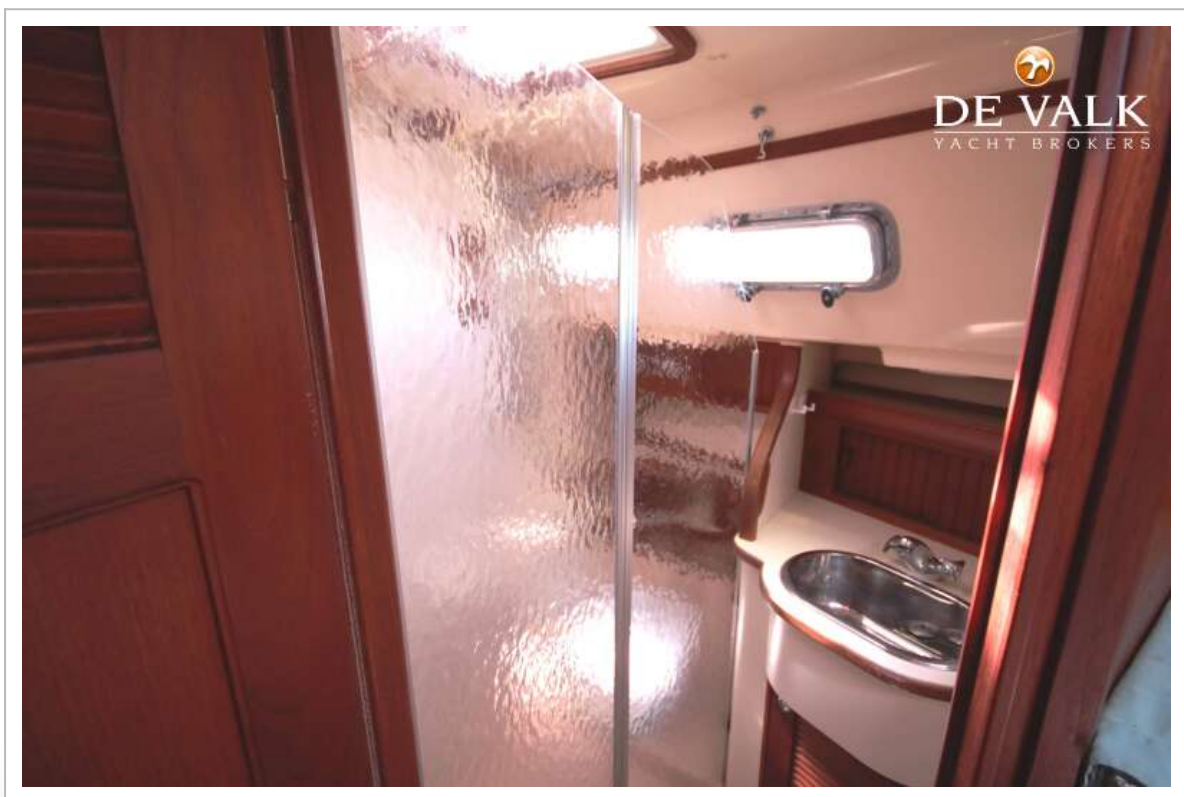
ISLAND PACKET 380



ISLAND PACKET 380



ISLAND PACKET 380



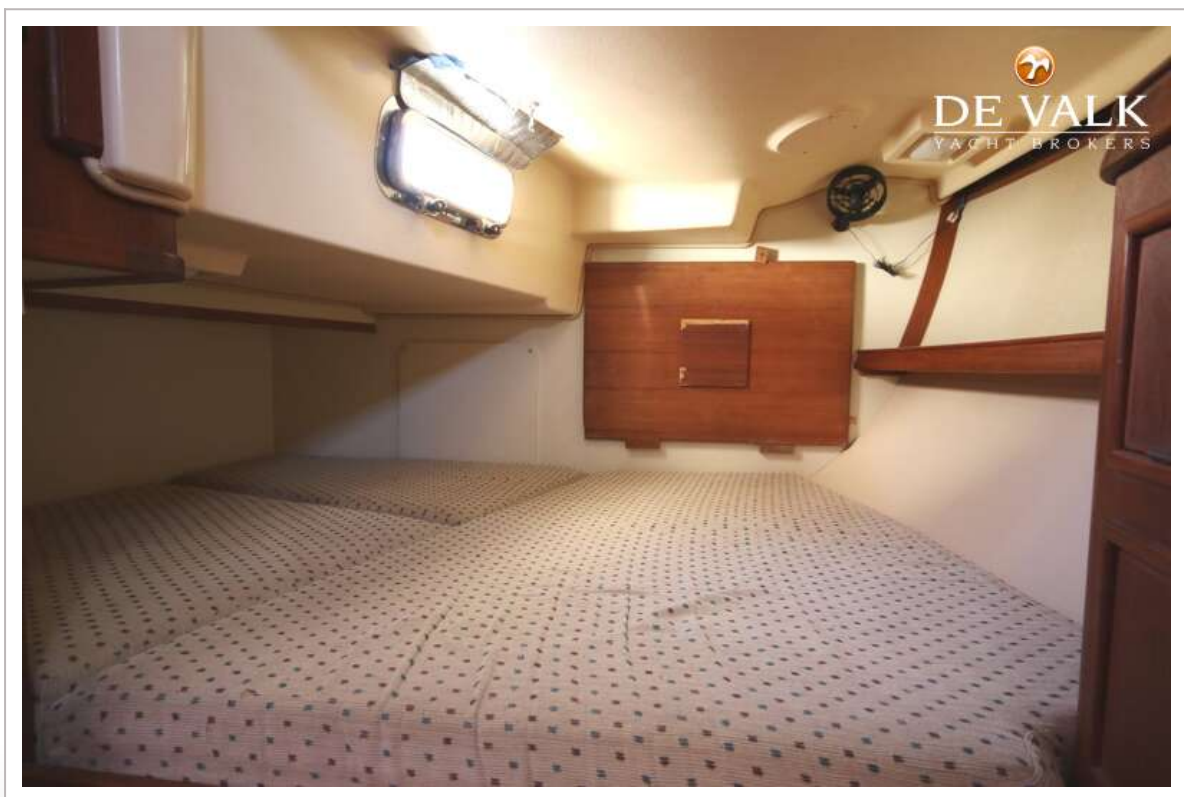
ISLAND PACKET 380



ISLAND PACKET 380



ISLAND PACKET 380



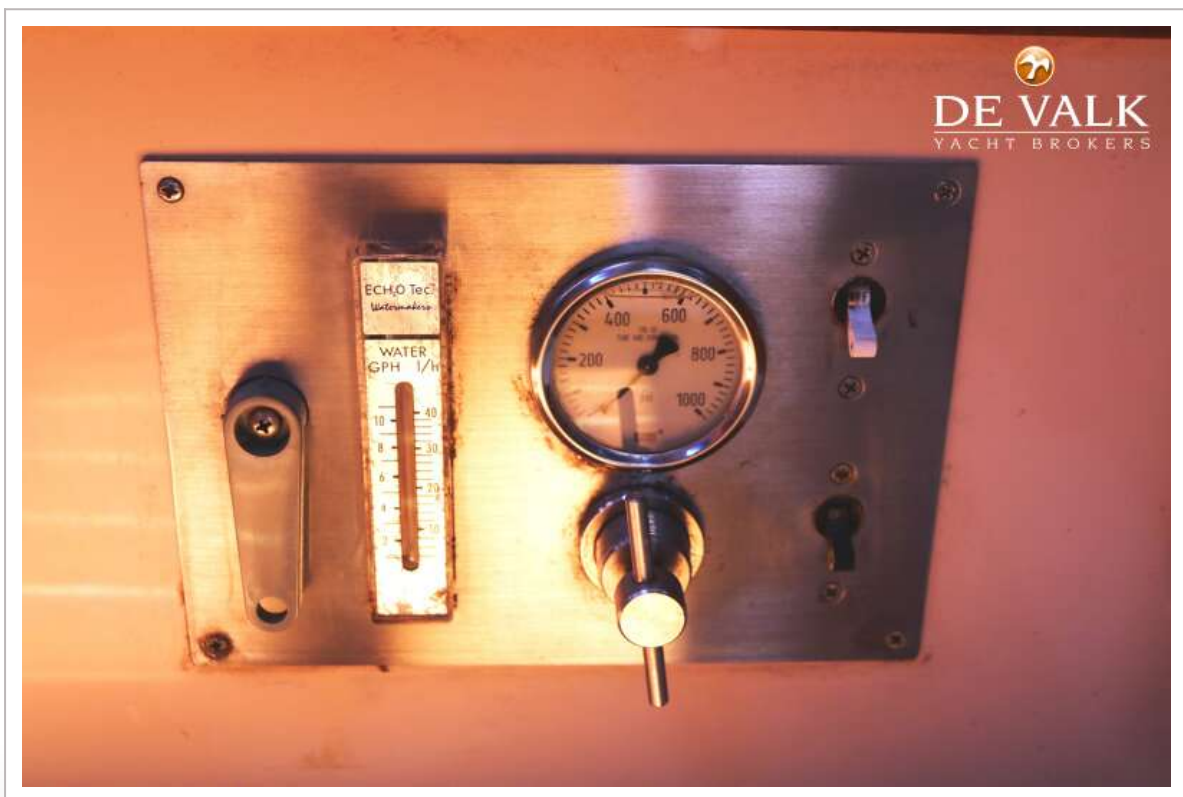
ISLAND PACKET 380



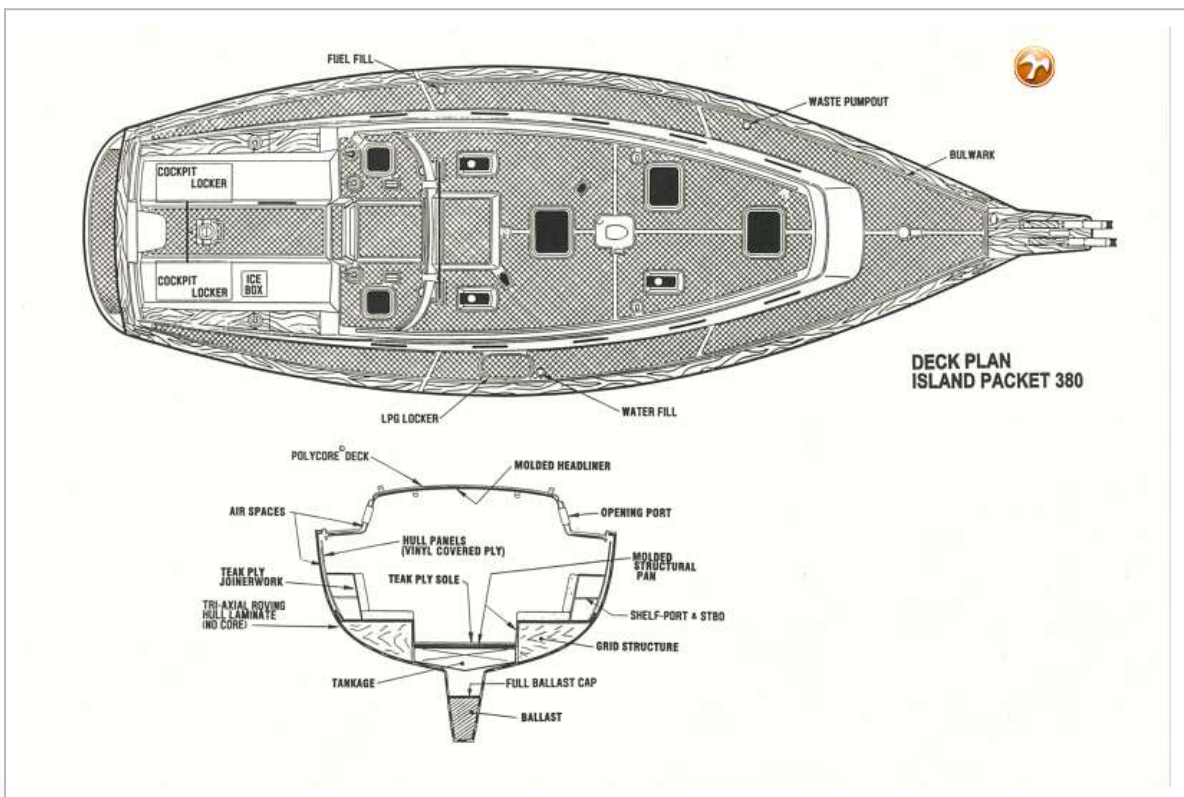
ISLAND PACKET 380



ISLAND PACKET 380



ISLAND PACKET 380



ISLAND PACKET 380

