



LINSSEN 380 AC


DE VALK
YACHT BROKERS

LINSSSEN 380 AC

BROKER'S COMMENTS

The Linssen 380 AC is a well-known Dutch motor yacht, a semi-classic line, excellent sailing characteristics. Maneuvering is convenient, partly due to bow & stern thruster and steering from the aft deck with a great overview. Equipped with a cozy and spacious interior with central heating, partly double glazing, generator and many more extras. Extremely suitable for longer stays and traveling on waterways with a clearance height of 2.90 m. Well maintained by both the first and the current second owner. To be viewed by appointment, please contact De Valk Thuishaven

Ger Bayens

SPECIFICATIONS

Dimensions	11.60 x 3.85 x 1.15 (m)	Builder	Linssen Yachts
Built	2002	Cabins	2
Material	Steel	Berths	4
Engine(s)	1 x Volvo Penta Tamd 31S diesel	Hp/Kw	100.00 (hp), 73.50 (kw)
Asking price	sold (VAT)	Lying	elsewhere / Not at sales office

CONTACT

Sales office	De Valk Thuishaven	Telephone	+31 35 5829042
Address	Peperstraat 7 1411 PX Naarden NL	E-mail	thuishaven@devalk.nl

DISCLAIMER

These particulars are given in good faith as supplied but cannot be guaranteed.



GENERAL

Model	LINSSSEN 380 AC
Type	motor yacht
LOA (m)	11,60
LWL (m)	9,55
Beam (m)	3,85
Draft (m)	1,15
Air draft (m)	2,90
Headroom (m)	1,95
Year built	2002
Builder	Linssen Yachts
Country	The Netherlands
Designer	Anne Elzinga & Linssen Yachts
Displacement (t)	14
CE norm	B
Hull material	steel
Hull colour	off-white
Hull thickness (mm)	6-5
Hull shape	hard chine
Superstructure material	steel
Rubbing strake	fender rope
Deck material	steel
Deck finish	teak
Superstructure deck finish	paint
Cockpit deck finish	teak
Antifouling (year)	2019/2020
Window frame	aluminium
Window material	tempered glass Front windows double glazing (2011)
Deckhatch	yes
Portholes	aluminium
Mast can be lowered	



Fuel tank (litre)	steel 900 (2x 450)
Level indicator (fuel tank)	yes
Freshwater tank (litre)	polyethylene 450
Level indicator (freshwater)	yes
Blackwater tank (litre)	polyethylene 250
Level indicator (blackwater)	yes
Blackwater tank extraction	deck extraction + pump
Inside helm position	hydraulic
Outside helm position	hydraulic
More info on hull	yes
More info on paintwork	2011
Extra info	Steering chair outside renewed (2011)

ACCOMMODATION

Cabins	2
Berths	4
Interior	cherry
Layout	2 cabins, saloon/wheelhouse, galley, dinette, 2 heads
Floor	teak and holly
Aft deck	yes
Pilot house/deck saloon	yes
Headroom saloon (m)	1,95
Heating	central heating Eberspächer Hydronic 10
Aft Cabin	yes
Dinette	yes
Dinette to convert into berth	yes
Galley	yes
Countertop	plastic
Sink	stainless steel
Cooker	calor gas ENO 3-flame
Microwave/oven combi	Sharp (2019)



LINSSEN 380 AC

Fridge	with freezer compartment Coolmatic (2018)
Hot water system	220V + engine Isotherm
Water pressure system	electrical Pump renewed/pomp vervangen (2017)
Owners cabin	French bed
Bed length (m)	2,00 x 1,50
Wardrobe	hanging and drawers
Bathroom	en suite
Toilet	en suite
Toilet system	electric
Wash basin	at the toilet
Shower	separate
Guest cabin 1	bunk bed
Bed length (m)	2,00 x 0,65
Wardrobe	hanging and shelves
Bathroom	en suite
Toilet	en suite
Toilet system	electric
Wash basin	at the toilet
Shower	en suite
Washing machine/dryer combi	Spaumeister 802 Combi

MACHINERY

No of engines	1
Make	Volvo Penta
Type	Tamd 31S
HP	100
kW	73,50
Fuel	diesel
Year installed	2002
Maximum speed (kn)	7
Cruising speed (kn)	6,5



Consumption (l/hr)	5
Engine cooling system	freshwater heat exchanger
Drive	shaft
Shaft seal	stuffing box / grease pump
Engine controls	bowden cable
Gearbox	mechanical
Bowthruster	electric Vetus 80 Kgf
Sternthruster	Vetus 75 Kgf (2011)
Exhaust	watercooled
Thrust bearing	Python Drive
Propeller type	fixed
Propeller blades	4
Propeller shaft material	stainless steel
Shaft lubrication	grease
Manual bilge pump	yes
Electric bilge pump	yes
Electrical installation	12/220V
Generator	wet exhaust Onan 4 Kw
Running hours generator	450
Batteries	6x
Start battery	2x AGM 120 Ah (2015)
Service battery	4x AGM 120 Ah (2011)
Battery monitor	yes
Battery charger/inverter	Victron Multi Compact 12/1600/70
Shorepower	with cable

NAVIGATION

Electric compass	Raytheon
Depth sounder/log	Raytheon ST 60 Tridata/ Raytheon Masterview
VHF	inside & outside control Icom
Rudder angle indicator	Raytheon



Plotter/GPS	Raytheon RC 435i
Navigation lights	yes

EQUIPMENT

Fixed windscreen	foldable
Sprayhood	yes
Bimini	yes
Sun awning	yes
Cockpit cushions	yes
Cockpit table	yes
Bathing platform	yes
Boarding ladder	stainless steel
Bow ladder	bow-step
Anchor	Delta
Anchor chain	yes
Windlass	manual
Capstan	yes
Deck wash	yes
Dinghy	Maxum
Outboard	4HP/Pk
Davits	stainless steel
Davits controls	manual
Sea railing	stainless steel
Grab rail (superstructure)	stainless steel
Railing side opening gates	yes
Pushpit	yes
Pulpit	yes
Lifebuoy	yes
Wiper	with interval switch and freshwater windscreen washer
Horn	electric
Radar reflector	yes



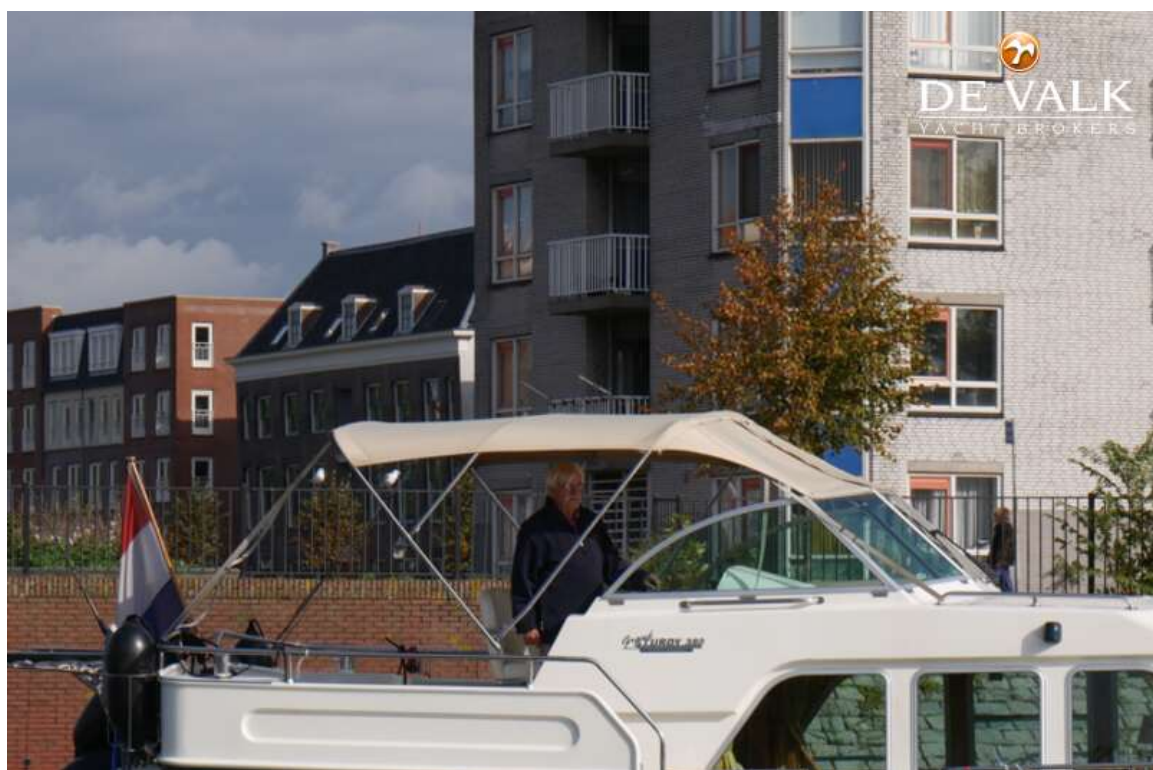
Fenders	yes
Mooring lines	yes
TV	Grundig flatscreen
Radio-cd player	yes
Clock - barometer	yes
Fire extinguisher	2x
Latest extinguisher survey	2x (2020)
Extinguisher in engine room	yes
Auto extinguisher system	yes



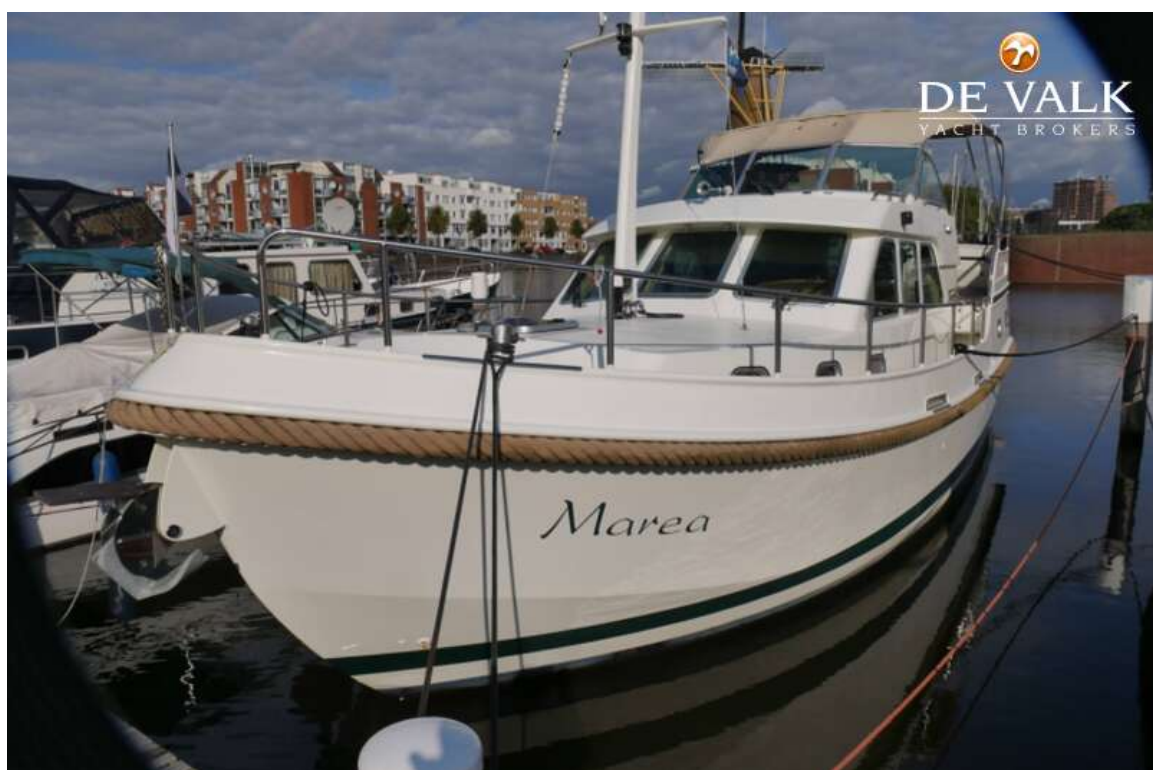
LINSSEN 380 AC



LINSSEN 380 AC



LINSSEN 380 AC



LINSSEN 380 AC



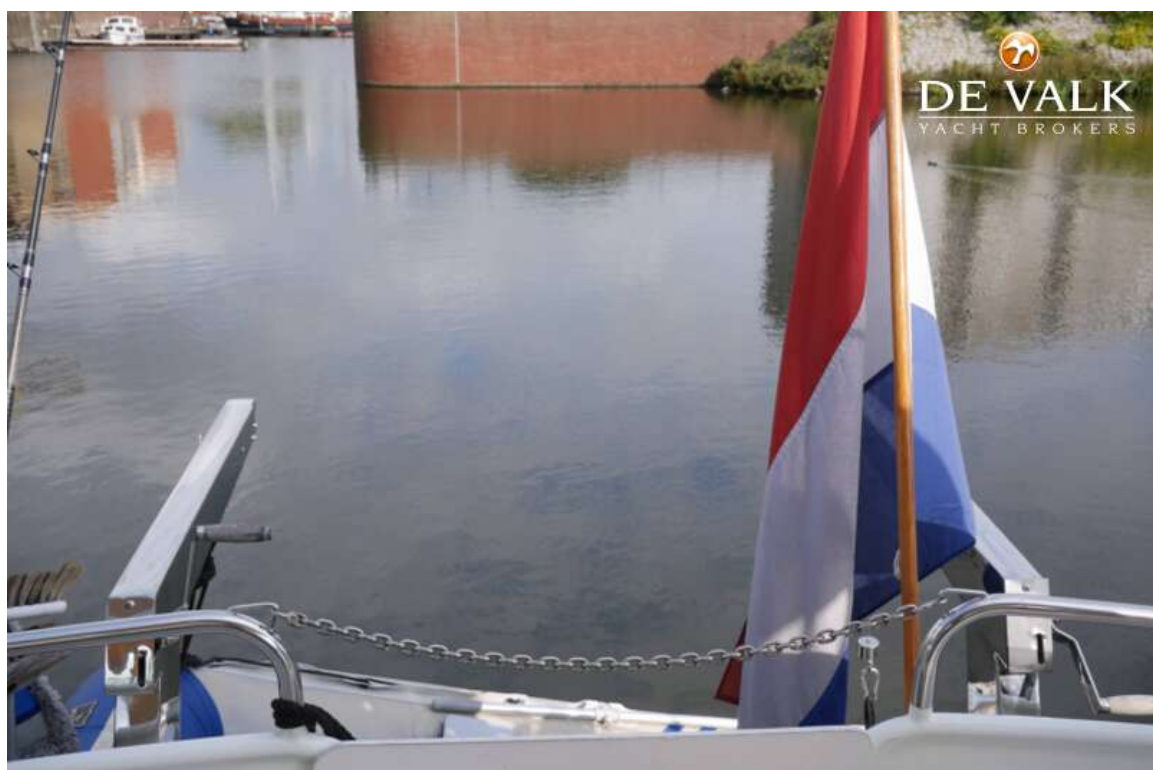
LINSSEN 380 AC



LINSSEN 380 AC



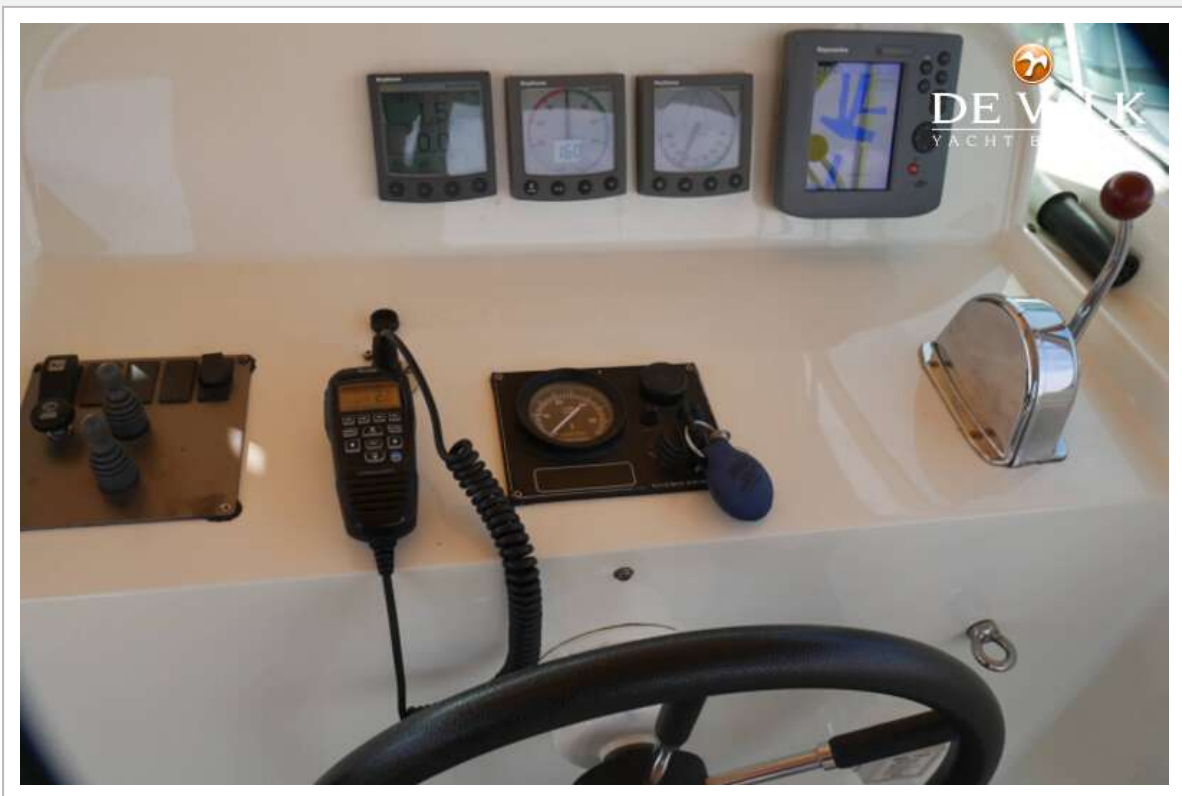
LINSSEN 380 AC



LINSSEN 380 AC



LINSSEN 380 AC



LINSSEN 380 AC



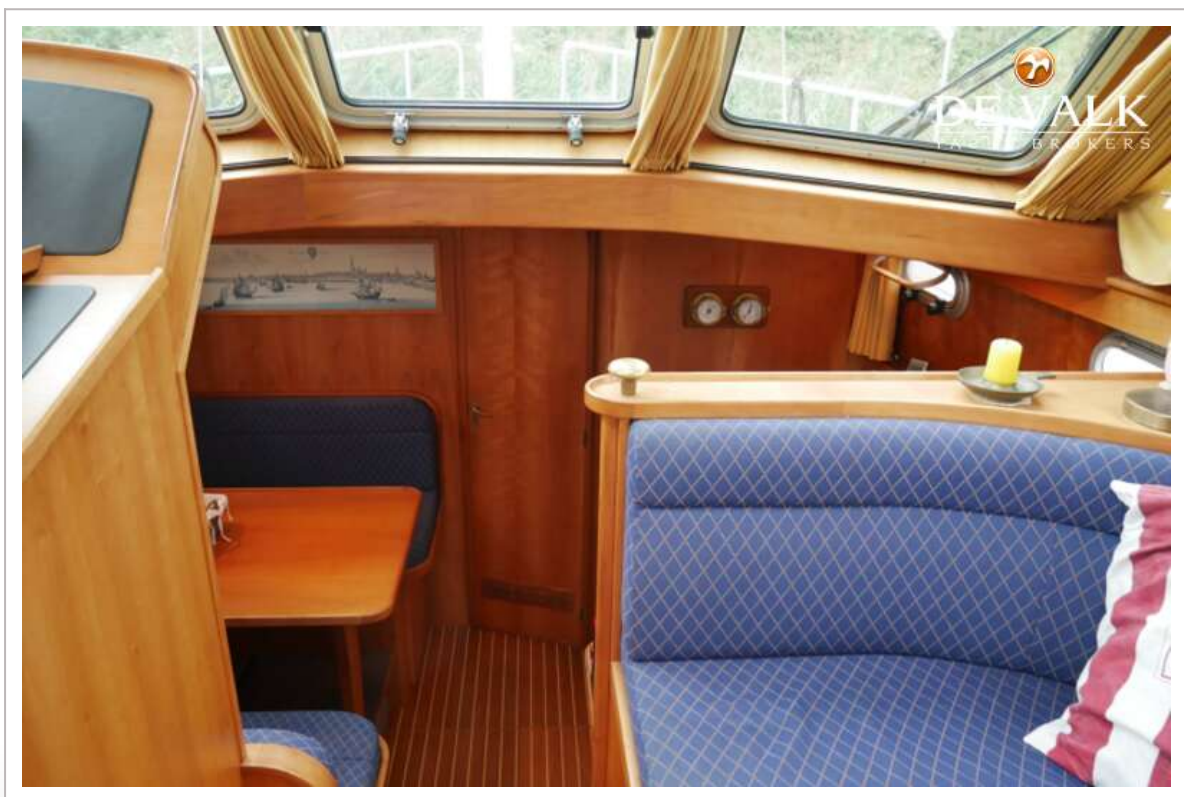
LINSSEN 380 AC



LINSSEN 380 AC



LINSSEN 380 AC



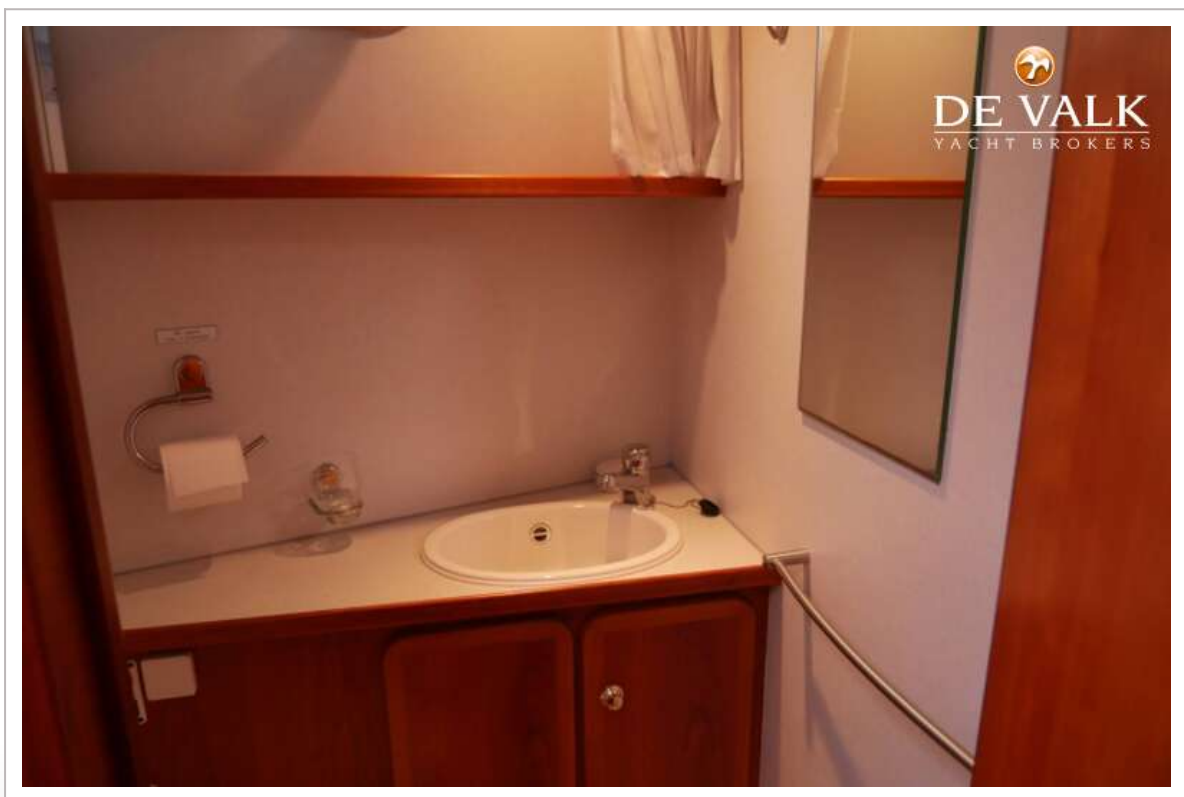
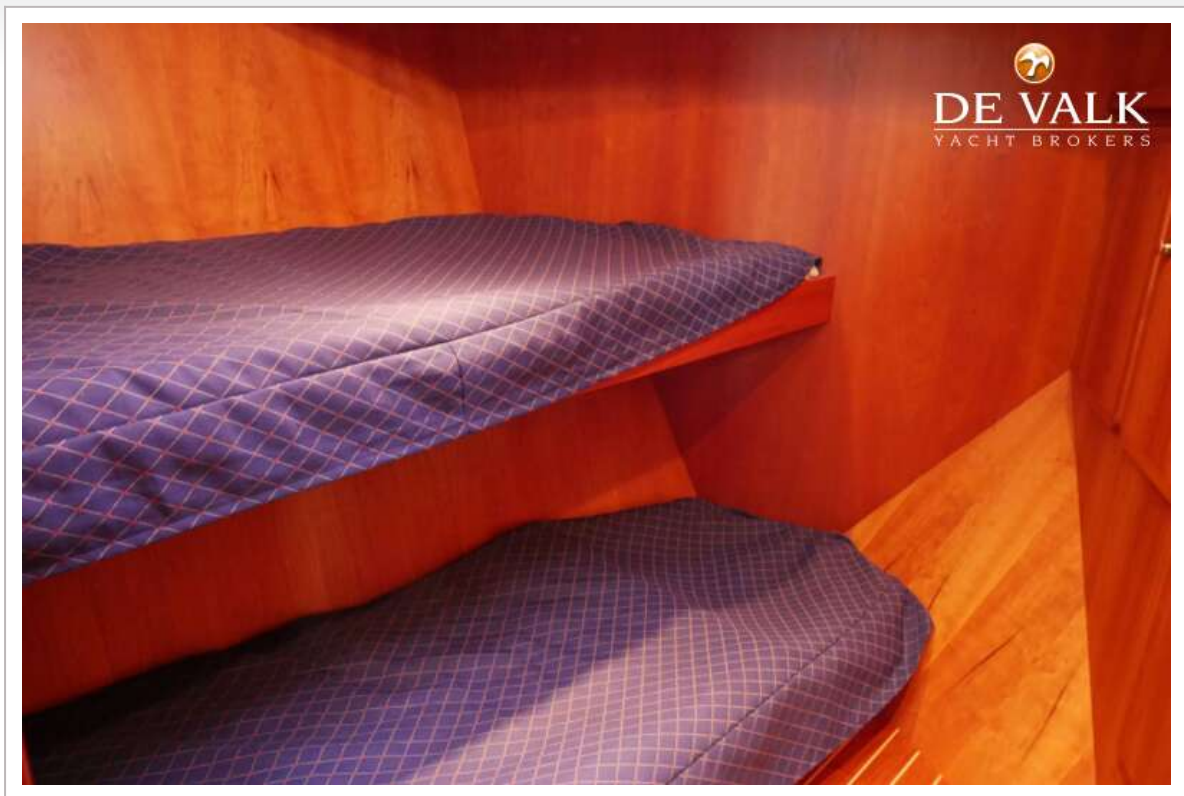
LINSSEN 380 AC



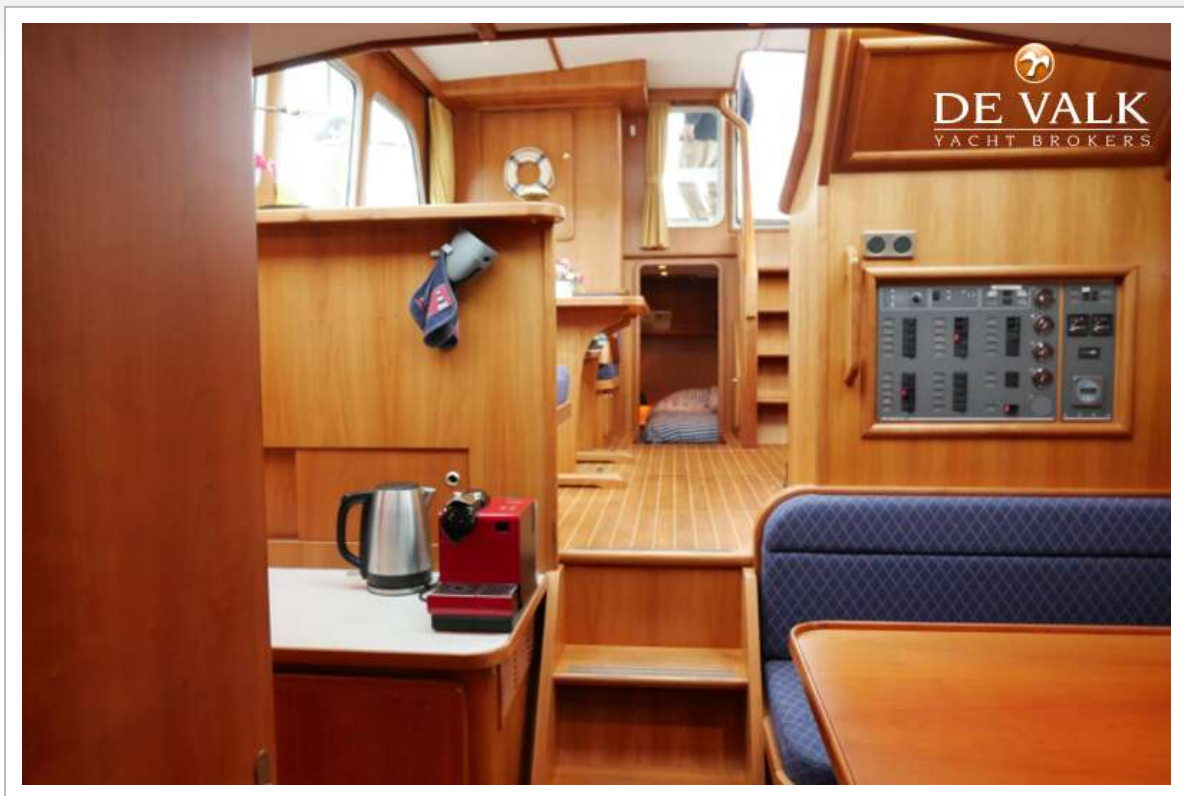
LINSSEN 380 AC



LINSSEN 380 AC



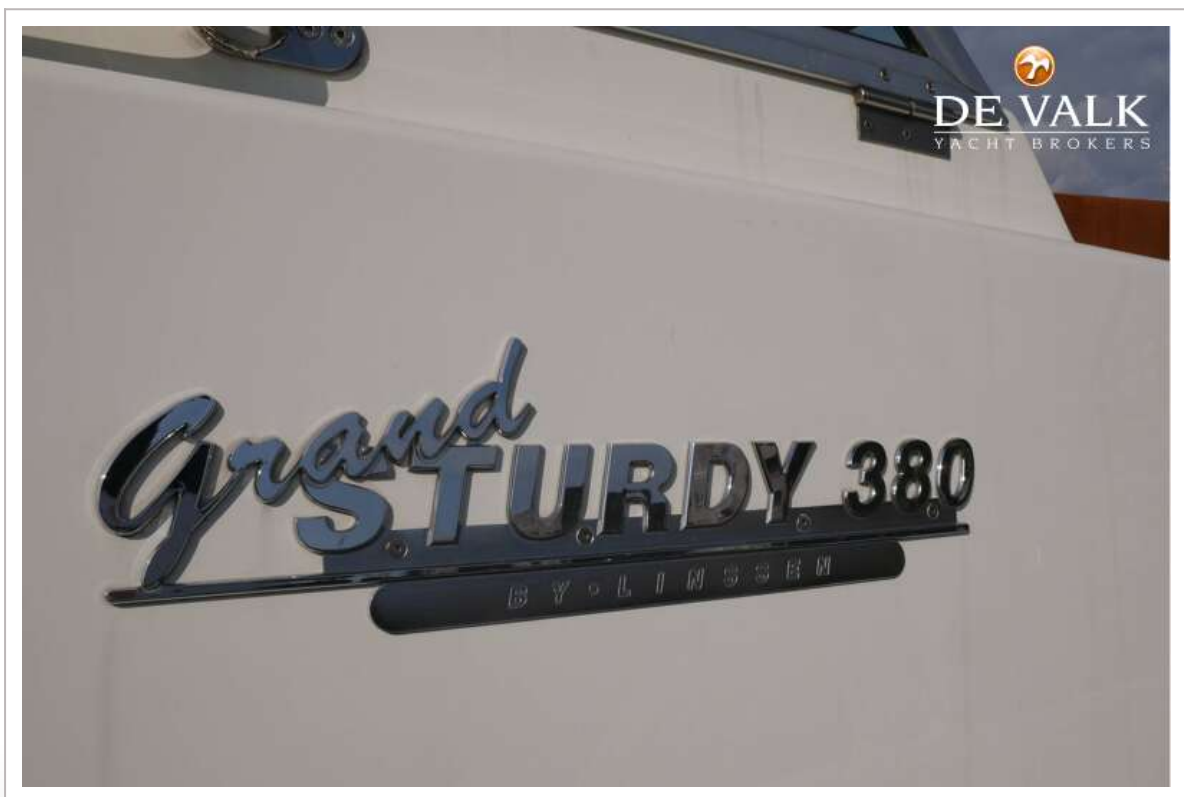
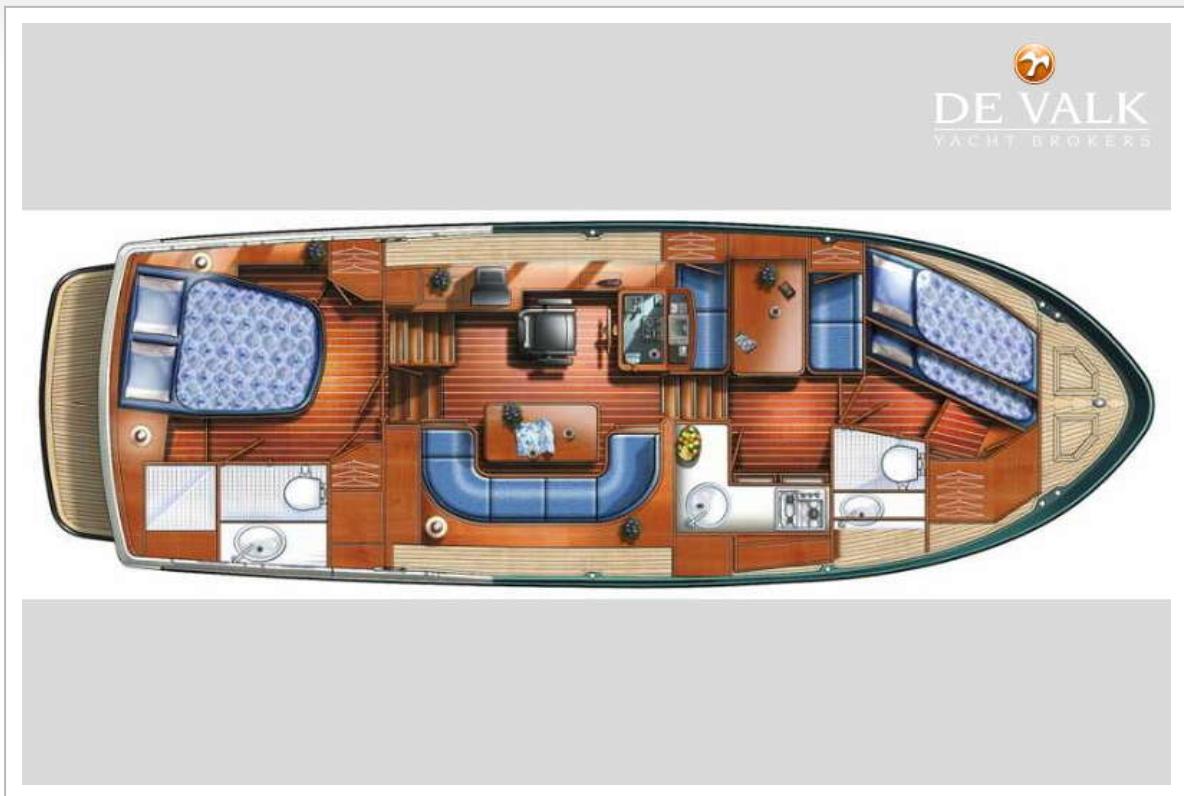
LINSSEN 380 AC



LINSSEN 380 AC



LINSSEN 380 AC



LINSSEN 380 AC



LINSSEN 380 AC

